



Air Hammer Adapter Kit
2024 Directional Drill
Model No. 23808

Installation Instructions

Loose Parts

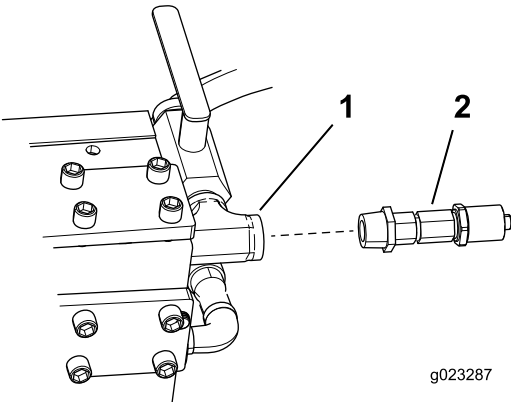
Use the chart below to verify that all parts have been shipped.

| Description | Qty. | Use |
|----------------------------|------|---------------------------|
| Tee fitting | 1 | Install the adapter. |
| 90 degree elbow | 2 | |
| Pipe (12.7 cm [5 inches]) | 1 | |
| Ball valve | 1 | |
| Pipe (22.86 cm [9 inches]) | 1 | |
| 45 degree elbow | 1 | |
| Small nipple | 1 | |
| Bell-reducer fitting | 1 | |
| Large pipe nipple | 1 | |
| No parts required | — | Install the wire harness. |

⚠ WARNING

CALIFORNIA
Proposition 65 Warning

This product contains a chemical or chemicals known to the State of California to cause cancer, birth defects, or reproductive harm.



g023287

Figure 1

Installing the Adapter

1. Remove the pump transducer from the existing tee fitting (Figure 1).
1. Existing tee fitting in mud pump 2. Pump transducer pump



2. Assemble the adapter parts with pipe putty or pipe-sealant tape. Refer to Figure 2.

Note: Fittings sealed with o-rings do not require pipe putty or pipe-sealant tape.

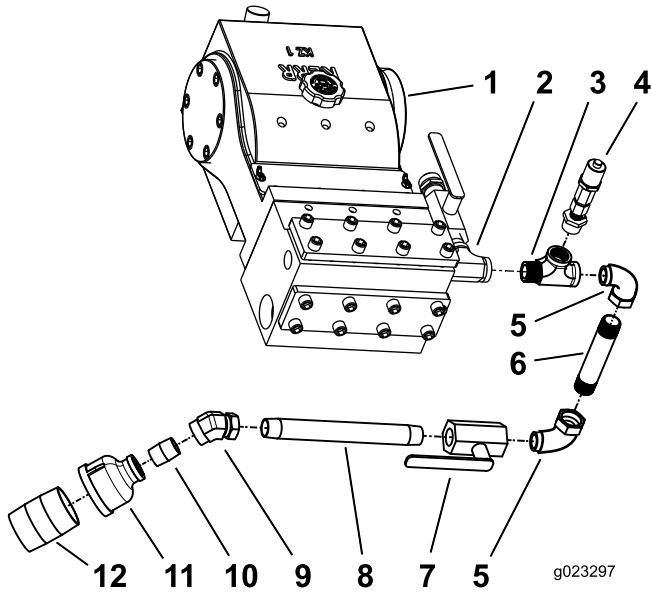


Figure 2

- | | |
|-------------------------------------|------------------------------|
| 1. Mud pump | 7. Ball valve |
| 2. Existing tee fitting in mud pump | 8. Pipe (22.9 cm [9 inches]) |
| 3. Tee fitting | 9. 45 degree elbow |
| 4. Existing pump transducer | 10. Small nipple |
| 5. 90 degree elbow | 11. Bell-reducer fitting |
| 6. Pipe (12.7 cm [5 inches]) | 12. Large nipple |

3. Install the air-hammer adapter assembly to the existing tee fitting (Figure 3).

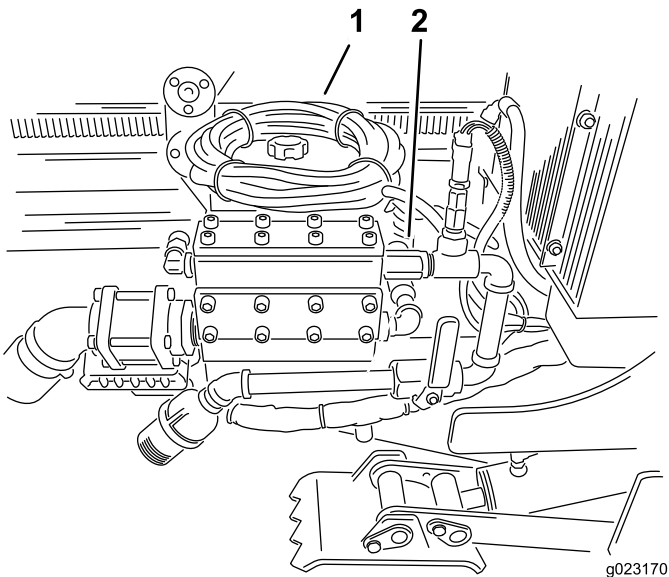


Figure 3

- | | |
|----------------|-------------------------|
| 1. Wireharness | 2. Existing tee fitting |
|----------------|-------------------------|

Installing the Wire Harness

1. Plug the wire harness into the connector near the manifold (Figure 4).

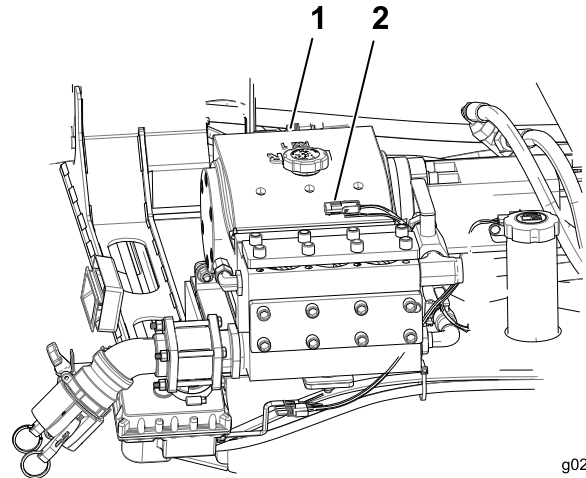


Figure 4

- | | |
|-------------|--------------|
| 1. Mud pump | 2. Connector |
|-------------|--------------|

2. Plug the opposite end of the wire harness into the air hammer.