



Count on it.

Form No. 3377-987 Rev A

Parts Catalog

Sliding Attachment Kit RT1200 Trencher

Model No. 25454—Serial No. 314000001 and Up

Model No. 25454E—Serial No. 314000001 and Up



Ordering Replacement Parts

To order replacement parts, please supply the part number, the quantity, and the description of each part desired.

Understanding Reference Numbers

Each identified part in an illustration has a reference number. The reference number for a part also appears in the parts list, along with other information about the part.

This catalog uses two special reference number formats, one to indicate parts in a service assembly and another to indicate the quantity of a given part in an illustration.

Service Assembly Reference Numbers

Parts in service assemblies have reference numbers in the form a:b. The a represents the reference number of the entire service assembly and the b represents a sequential number unique to each part within the service assembly.

For example, a wheel assembly might be identified by reference number 6, the tire by 6:1, the valve by 6:2, and the wheel by 6:3. When you order the assembly identified by reference number 6, you receive all parts identified by reference numbers 6:1, 6:2, and 6:3. However, you may also order any part individually. Reference numbers of this type appear in illustration and in parts lists.

Reference Numbers Indicating Quantity

In an illustration, if a reference number indicates more than one part, the reference number has the form nX y. The n represents the quantity of the part, the X is the multiplication symbol, and the y represents the reference number.

For example, in an illustration, the reference number 2X 37 means that two of the parts identified by reference number 37 are indicated.

List of Abbreviations

AR: as required

ASM: assembly

BBC: blade brake control

BHTF: button head thread forming

CARR: carriage

CCW: counter clockwise

CW: clockwise

DEG: degrees

DPA: Dual Point Adjustment

ECM: electronic control module

EXT: external

FH: flat head

GA: gauge

HD: heavy-duty

HF: hex flange

HH: hex head

HHF: hex head flange

HHFTF: hex head flange thread forming

HJ: hex jam

HLH: hex lag head

HOC: height-of-cut

HP: high pressure

HSBH: hex socket button head

HSFH: hex socket flat head

HSH: hex socket head

HWH: hex washer head

HWHTF: hex washer head thread forming

HYD: hydraulic

LH: left hand

LP: low pressure

LPG: Liquefied Petroleum Gas

NI: nylon insert

NPTF: national pipe thread fine

PFH: phillips flat head

PPH: phillips pan head

PPHTF: phillips pan head thread forming

PRH: phillips round head

PTH: phillips truss head

PTO: power-take-off

RH: right hand

ROPS: roll-over protection system

RRB: rear roller brush

SFH: slotted fillister head

SHH: slotted hex head

SHWH: slotted hex washer head

SPH: slotted pan head

SQH: square head

SRH: slotted round head

STD: standard

TAP: self tapping

TTH: torx truss head

Contents

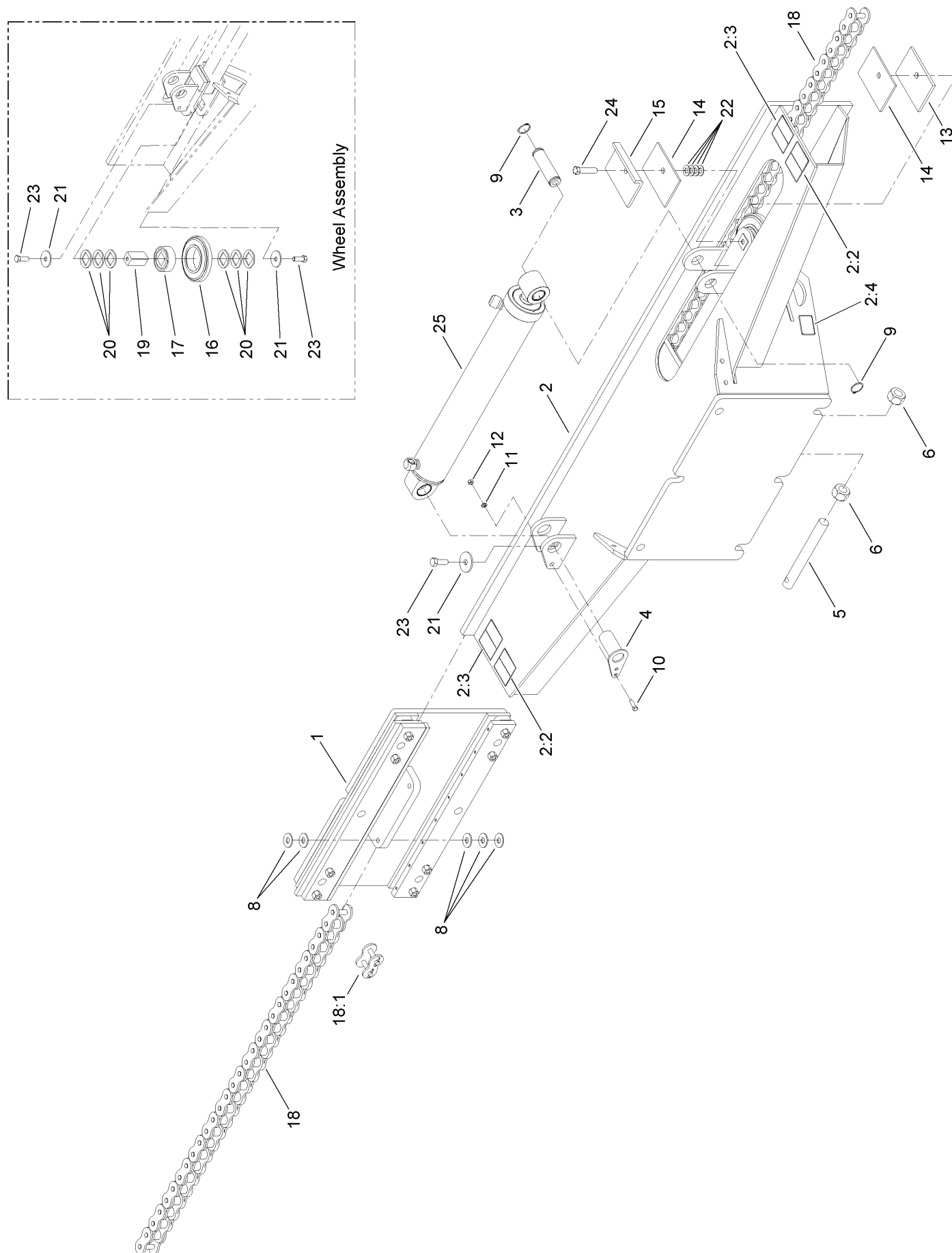
Slide Mount and Slide Shift Assembly..... 4

Slider Mount Assembly No. AU100934 6

Hydraulic Cylinder Assembly No. 130-7464 8

Hydraulic Plumbing Assembly 10

Slide Mount and Slide Shift Assembly

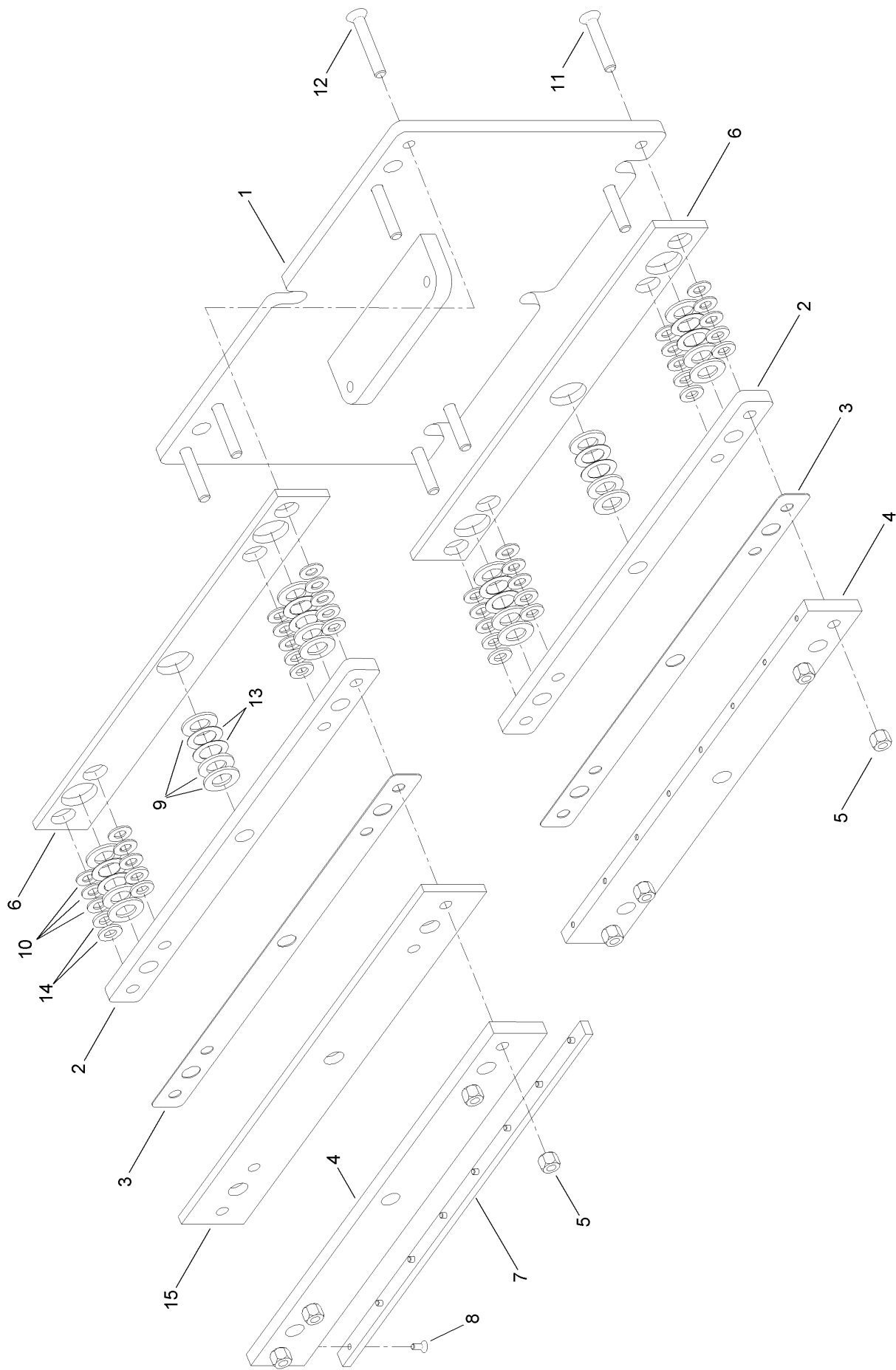


Slide Mount and Slide Shift Assembly (continued)

<i>Ref.</i>	<i>Part Number</i>	<i>Qty.</i>	<i>Description</i>
1	AU100934	1	Slide Mount ASM
2	130-7459	1	Side Shift ASM
2:2	125-6107	2	Decal-Warning, Crushing
2:3	125-6690	2	Decal-Danger, Crushing
2:4	125-6694	2	Decal-Tie Down
3	AU221253A1	1	Pin-Pivot
4	AUH672354	1	Pin-Boom (Cylinder)
5	AU101012	2	Rod-Threaded
6	AU425-1020	4	Nut-Hex
8	AU495-21069	10	Washer-Flat
9	32151-35	2	Ring-Retaining, External
10	323-7	1	Screw-HH
11	3253-21	1	Washer-Lock
12	AU129-770	1	Nut-Hex

<i>Ref.</i>	<i>Part Number</i>	<i>Qty.</i>	<i>Description</i>
13	AU101257-03	1	Plate-Slide
14	AU101258	2	Sheet-Wear Strip
15	AU101350-03	1	Plate-Slide, Upper
16	AU101805	2	Wheel-Boom End, Idler
17	AUH747444	2	Bearing
18	AU100969	2	Chain ASM
18:1	AU102291	2	Link-Master
19	AU100699	2	Bar-Axle, Roller
20	AU100700	12	Washer
21	AU496-81025	3	Washer
22	AU495-11066	4	Washer-Flat
23	AU426-1028	3	Screw-HH
24	110-4614	1	Screw-HH
25	130-7464	1	HYD Cylinder ASM

Slider Mount Assembly No. AU100934

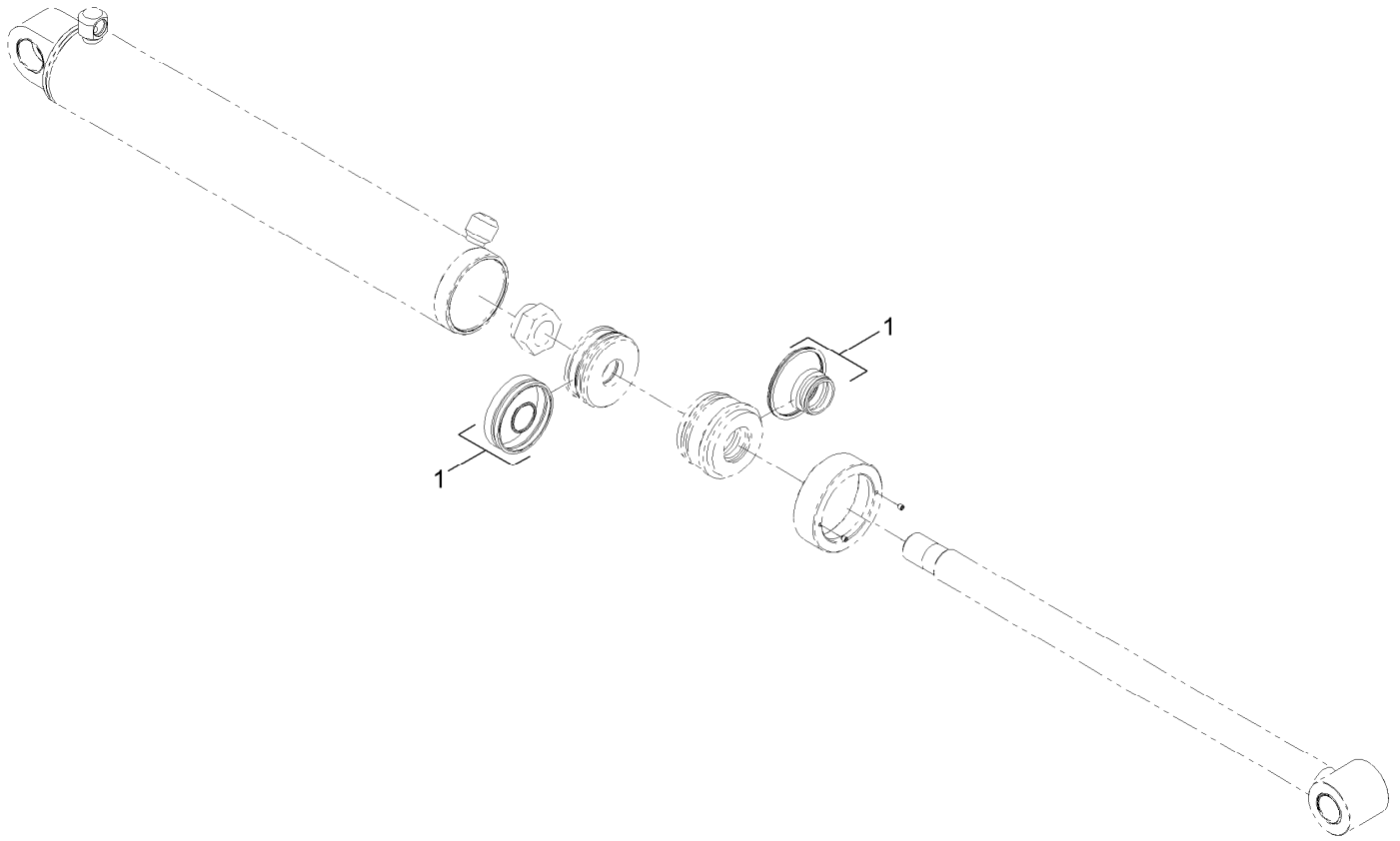


Slider Mount Assembly No. AU100934 (continued)

<i>Ref.</i>	<i>Part Number</i>	<i>Qty.</i>	<i>Description</i>
1	AU100929-03	1	Mount-Slide
2	AU100931-03	2	Plate-Spacer
3	AU100932	2	Plate-Slide
4	AU100933-03	2	Plate-Lip
5	AU230-42110	8	Nut-Hex, Center Lock
6	AU101265	2	Strip-Wear
7	AU101266	1	Strip-Wear
8	AU361-43112	8	Screw-HSFH

<i>Ref.</i>	<i>Part Number</i>	<i>Qty.</i>	<i>Description</i>
9	AUH426833	18	Washer
10	AU495-11066	24	Washer-Flat
11	130-7456	4	Screw-HSFH
12	130-7457	4	Screw-HSFH
13	AUH257915	12	Shim
14	AUH426809	16	Washer-Flat
15	AU116860	1	Strip-Antifriction, Front

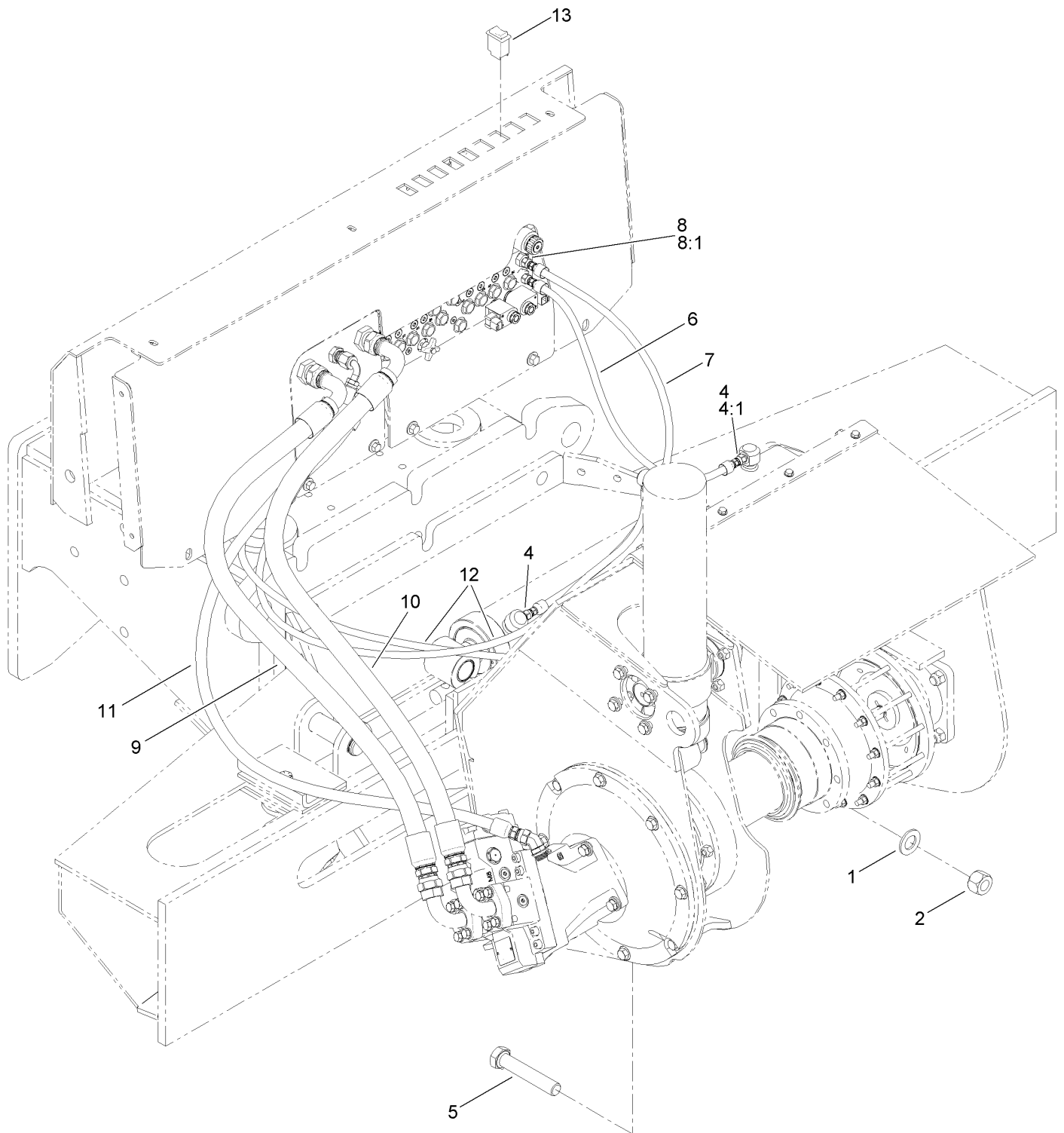
Hydraulic Cylinder Assembly No. 130-7464



Hydraulic Cylinder Assembly No. 130-7464 (continued)

<i>Ref.</i>	<i>Part Number</i>	<i>Qty.</i>	<i>Description</i>
1	131-2747	1	Seal Kit

Hydraulic Plumbing Assembly



Hydraulic Plumbing Assembly (continued)

<i>Ref.</i>	<i>Part Number</i>	<i>Qty.</i>	<i>Description</i>
1	AUH426833	12	Washer
2	AU232-41116	6	Nut-Hex
4	100-4749	2	Adapter-HYD
4:1	237-80	1	O-Ring
5	127-1299	6	Screw-HH
6	130-7460	1	HYD Hose ASM, HP
7	130-7461	1	HYD Hose ASM, HP
8	AU218-5058	2	Connector

<i>Ref.</i>	<i>Part Number</i>	<i>Qty.</i>	<i>Description</i>
8:1	237-79	1	O-Ring
9	131-0419	1	Hose ASM
10	131-0418	1	Hose ASM
11	130-7475	1	HYD Hose ASM, LP
12	130-7476	2	HYD Hose ASM, HP
13	AU113664	1	Switch-Rocker, 2 Pole (On)Off(On)



Count on it.