



4ft and 5ft Manual Crumbers

RT1200 Trencher

Model No. 25465

Model No. 25465E

Model No. 25466

Model No. 25466E

Form No. 3378-118 Rev A

Installation Instructions

Installation

Loose Parts

Use the chart below to verify that all parts have been shipped.

Description	Qty.	Use
Crumber bar	1	Install the crumber.
Crumber blade (6 inches)	1	
Crumber blade (8 inches)	1	
Carriage bolt (1/2 x 4 inch)	2	
Washer (1/2 inch)	2	
Locknut (1/2 inch)	2	
Spacer	1	

Note: You should have either 2 people or lifting equipment to perform this procedure.

1. Park the machine on a firm, level surface.
2. Move the boom to the horizontal position.
3. Turn off the engine and remove the key.
4. If the space between the mounting plates is too narrow to insert the crumber bar between them, loosen the 4 bolts and the 4 locknuts that secure the crumber mounting brackets to the boom enough so that you can insert the crumber bar between them (Figure 1).

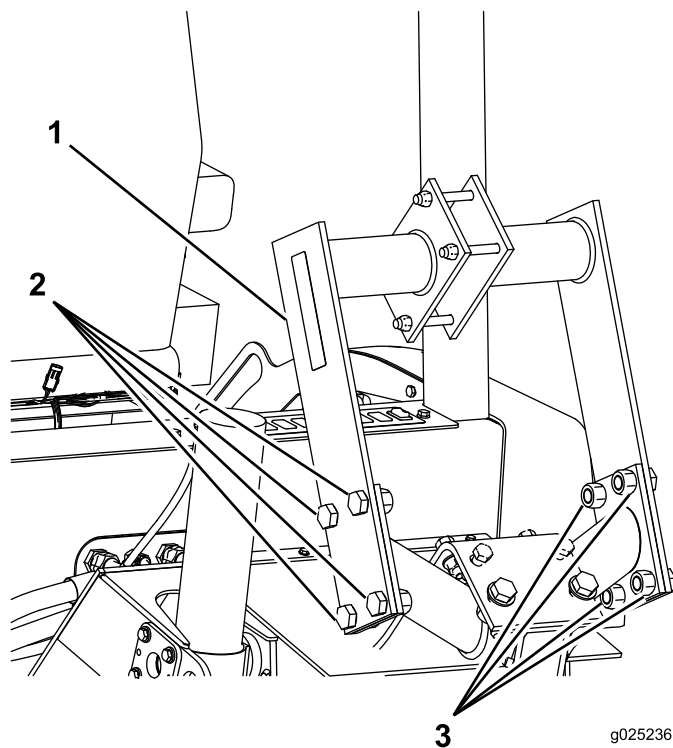


Figure 1

1. Crumber mounting bracket
2. Bolts
3. Locknuts



5. Loosely install the 4 hex-head bolts (M12 x 110 mm) and the 4 locknuts (M12) from the kit onto the plates, and insert the crumber bar between the plates and the bolts as shown in Figure 2.

Note: Torque the bolts and locknuts to 124 to 154 N-m (91 to 113 ft-lb).

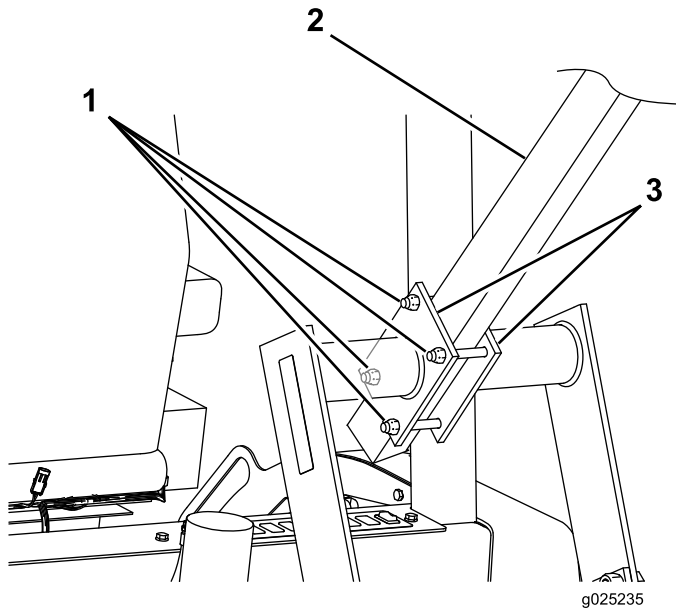


Figure 2

- | | |
|--------------------|--------------------|
| 1. Locknut—M12 (4) | 3. Mounting plates |
| 2. Crumber bar | |

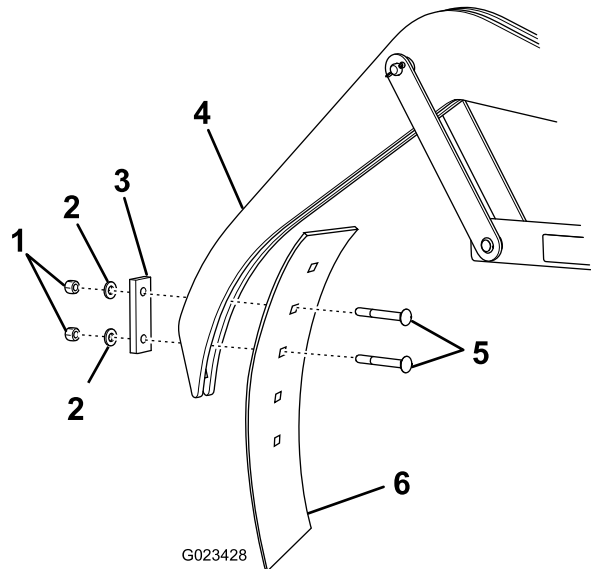


Figure 3

The boom and chain are not shown.

- | | |
|------------------------|----------------------------------|
| 1. Locknuts (1/2 inch) | 4. Crumber bar |
| 2. Washer (1/2 inch) | 5. Carriage bolts (1/2 x 4 inch) |
| 3. Spacer | 6. Crumber blade |

6. If you loosened the 4 bolts and the 4 locknuts that secure the crumber mounting brackets to the machine, torque them to 217 to 271 N-m (160 to 200 ft-lb).
7. Install the crumber blade onto the crumber bar with 2 carriage bolts (1/2 x 4 inch), a plate, 2 washers (1/2 inch), and 2 locknuts (1/2 inch) as shown in Figure 3.

Note: Torque the bolts and locknuts to 91 to 113 N-m (67 to 83 ft-lb).

Note: This kit includes 2 options for crumber blades, 6 inches and 8 inches. Only install one blade at a time.