



Trailer Light Kit

Side-Dump Mixers

Model No. 68062

Form No. 3377-600 Rev B

Installation Instructions

⚠ WARNING

CALIFORNIA Proposition 65 Warning

This product contains a chemical or chemicals known to the State of California to cause cancer, birth defects, or reproductive harm.

Installation

Loose Parts

Use the chart below to verify that all parts have been shipped.

Procedure	Description	Qty.	Use
1	Bracket	2	Install the brackets.
	Bolt	4	
	Nut	4	
2	Wire harness	1	Install the wires.
	Cable clamp	7	
	Edge clip—parallel	4	
	Edge clip—perpendicular	1	
	Fir-tree mount	2	
	Bolt	5	
	Nut	5	
	Cable tie	5	
3	Grommet	2	Install the lights.
	Light	2	
	License-plate holder	1	
4	Nut	4	Install the reflectors.
	Reflector	2	
	Bolt	2	
5	Nut	2	Replace the light bulbs.
	No parts required	—	



1

Installing the Brackets

Parts needed for this procedure:

2	Bracket
4	Bolt
4	Nut

Procedure

1. Align the bolt holes of a bracket with the bolt holes in the side frame rail under the cowl (Figure 1).

Note: For older models, drill (2) 7.5 mm (9/32 inch) holes on each side of the frame, spaced 5.1 cm (2 inches) apart, to accommodate the 2 mounting bolts for each bracket.

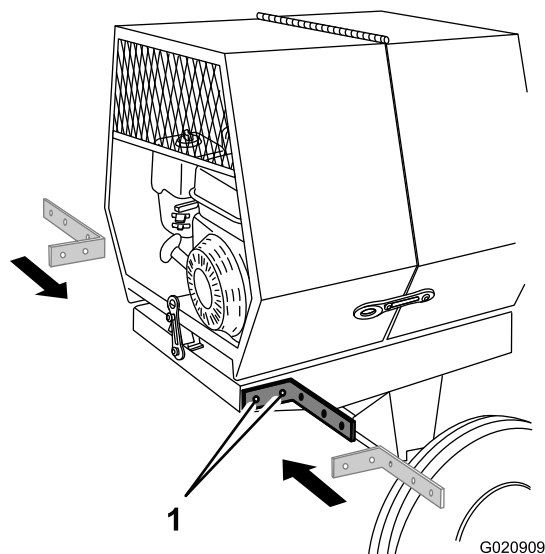


Figure 1

1. Bolt holes

2. Insert a bolt through each of the 2 holes in the bracket and the frame.
3. Install a nut on each bolt.

Note: Tighten these nuts and bolts later, when you mount the cable clamps; refer to step 4 in 2 Installing the Wires (page 2).

4. Repeat steps 1 through 3 on the other side of the machine.

2

Installing the Wires

Parts needed for this procedure:

1	Wire harness
7	Cable clamp
4	Edge clip—parallel
1	Edge clip—perpendicular
2	Fir-tree mount
5	Bolt
5	Nut
5	Cable tie
2	Grommet

Procedure

Different models use a different number of fasteners. Use the appropriate number of fasteners for your machine.

1. Push the pre-installed fir-tree mount (Figure 2) on the short branch (with the yellow wire) of the wire harness into the hole closest to the machine, in the left light bracket (Figure 3).

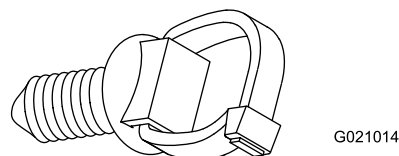


Figure 2

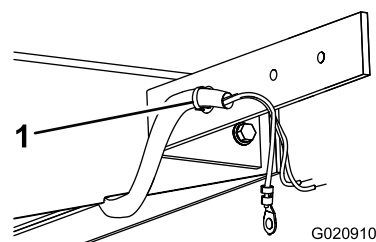


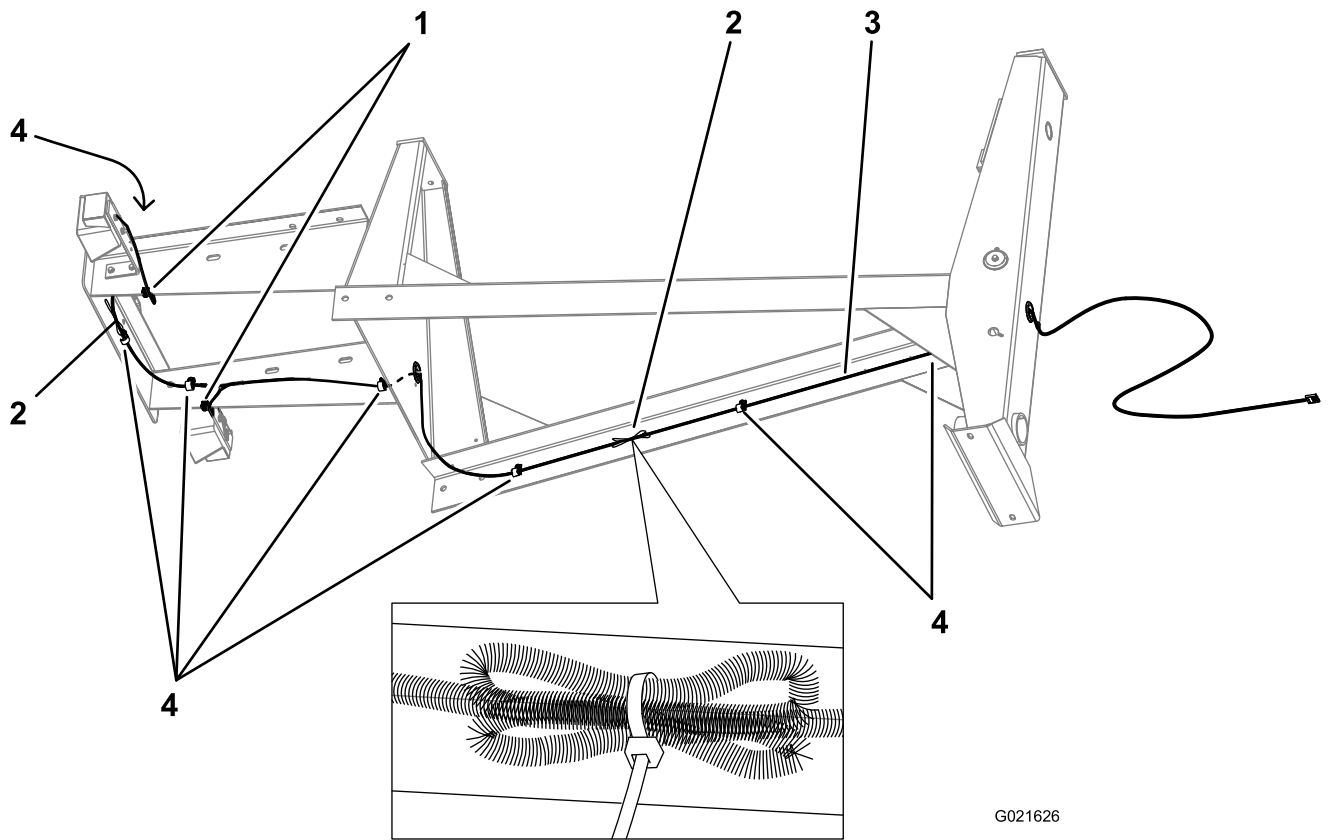
Figure 3

1. Fir-tree mount

Note: Ensure that each side of the wire harness goes to the correct side of the machine. If you switch the wiring of the lights, each turn signal will flash on the wrong side.

2. Push the pre-installed fir-tree mount on the long branch (with the green wire) of the wire harness into the hole closest to the machine, in the right light bracket (Figure 3).

3. Route the wire harness as shown in Figure 4, Figure 7, or Figure 8, depending on the model.



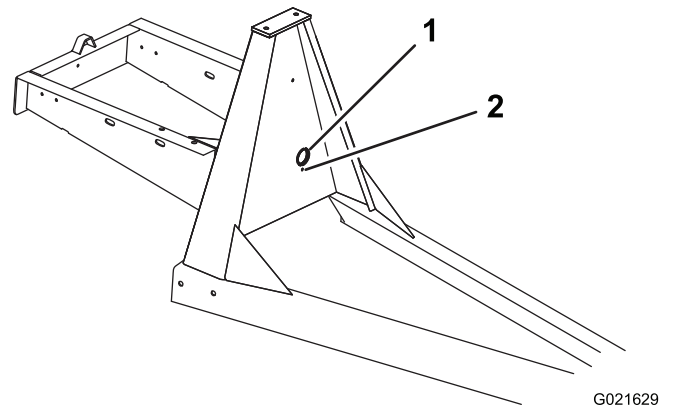
G021626

Figure 4

Concrete mixers (frame underside shown for clarity)

- | | |
|----------------|-----------------|
| 1. Edge clip | 3. Wire harness |
| 2. Excess wire | 4. Cable clamp |

Note: Some concrete mixers (Figure 4) have a hole in the rear vertical part of the frame; install a grommet in the hole, route the wire harness through the grommet, and secure the wire harness by pushing a fir-tree mount into the small hole under the grommet (Figure 5). If your machine does not have a hole, route the wire harness under the frame, and secure it with an edge clip (Figure 6).



G021629

Figure 5

Frame with hole

- | | |
|---------------------|----------------------------|
| 1. Hole and grommet | 2. Hole for fir-tree mount |
|---------------------|----------------------------|

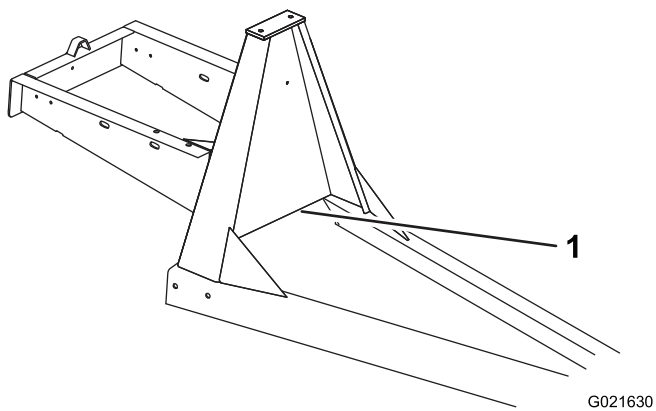


Figure 6
Frame without hole

1. Edge clip location

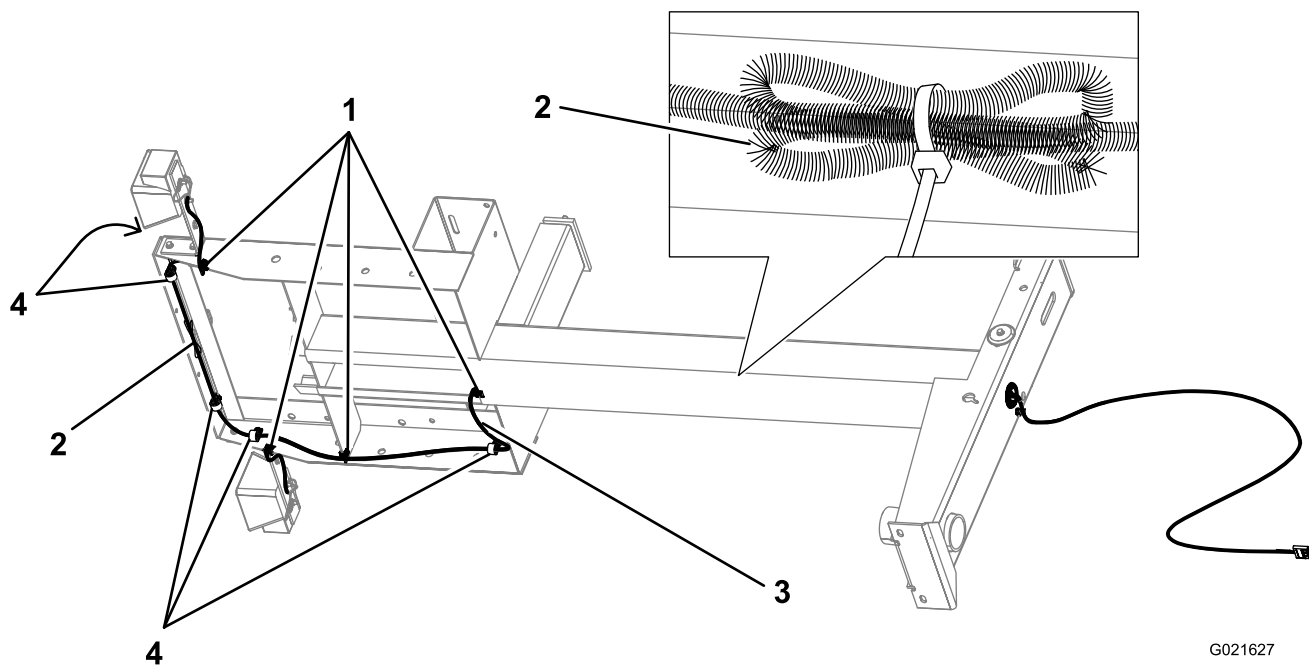


Figure 7
Belt-drive mortar mixers (frame underside shown for clarity)

- | | |
|----------------|-----------------|
| 1. Edge clip | 3. Wire harness |
| 2. Excess wire | 4. Cable clamp |

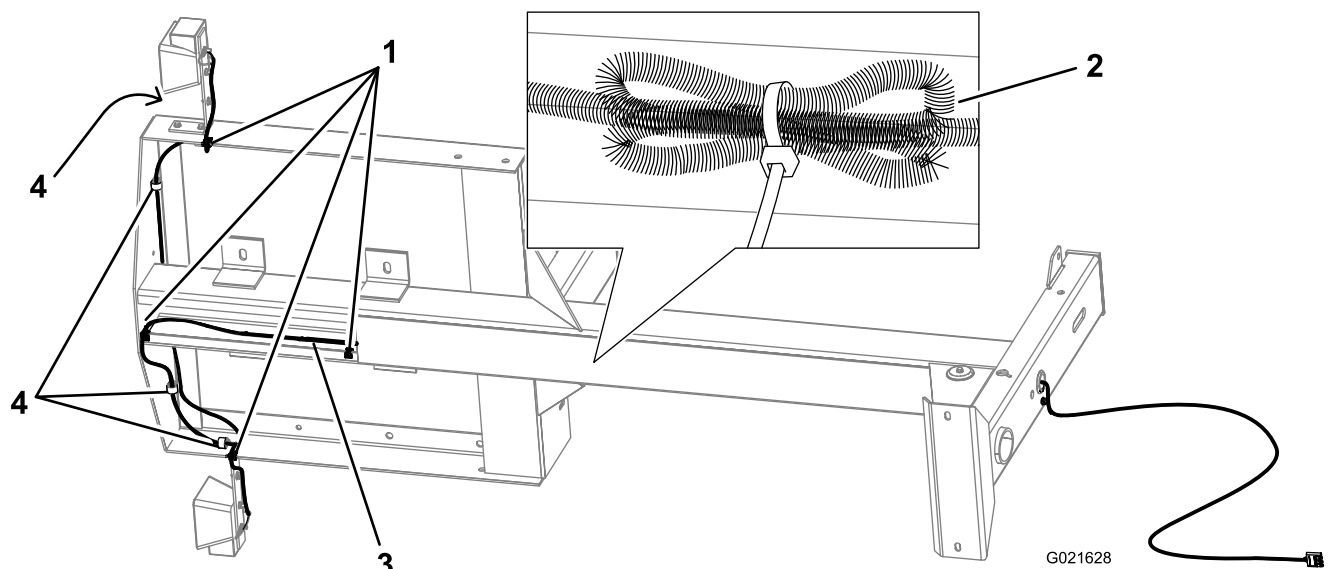


Figure 8

Gear-box mortar mixer (frame underside shown for clarity)

- | | |
|----------------|-----------------|
| 1. Edge clip | 3. Wire harness |
| 2. Excess wire | 4. Cable clamp |

4. Use cable clamps and edge clips to secure the wire harness along the inside of the frame (Figure 9).

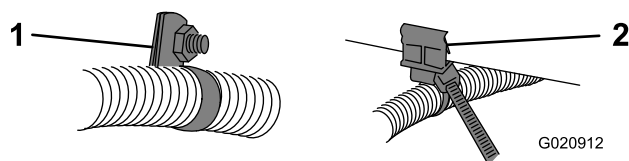


Figure 9

- | | |
|----------------|--------------|
| 1. Cable clamp | 2. Edge clip |
|----------------|--------------|

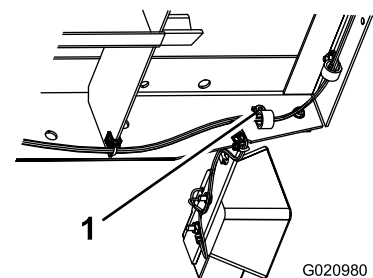


Figure 10

1. Nut and bolt

Note: To use a cable clamp, spread it apart and fit the wire harness into it. Then squeeze the clamp back together. Fasten the clamp to the frame of the machine with a nut and a bolt, using the pre-drilled holes along the frame. Tighten the nuts and bolts until they are secure.

For older models, drill a 7.5 mm (9/32 inch) hole for each bolt.

In each of the 2 rear corners of the frame, use a nut and bolt that secure the light bracket to also secure a cable clamp (Figure 10).

Note: Ensure that you tighten the 2 nuts and bolts for each bracket.

Note: To use an edge clip, push it into position along the edge of the frame and insert a cable tie through the slot. Use the cable tie to secure the wire harness.

5. Pull the front end of the wire harness out through the hole in the front post of the machine so that there is about 61 cm (24 inches) of slack beyond the front of the installed tow pole (Figure 11).

Note: For older models, use a hole saw to drill a 4.2 cm (1-5/8 inch) hole in the front post of the machine, so that the wire harness exits the frame in line with the horizontal frame rails.

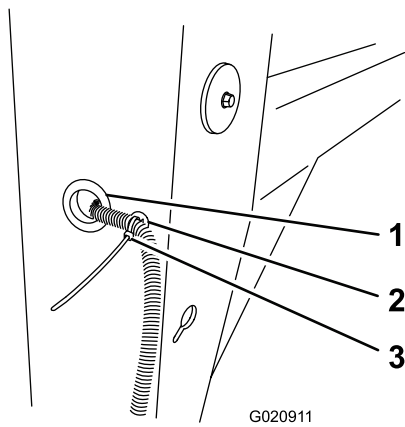


Figure 11

1. Grommet
2. Fir-tree mount
3. Cable tie

6. Slide the grommet over the 4-pin connector (Figure 12) on the front of the wire harness, and install it in the hole in the front post (Figure 11).



Figure 12

7. Push the fir-tree mount into the small hole next to where the wire enters the front post, and insert a cable tie through the slot.

Note: Use the cable tie to secure the wire harness. For older models, drill a 7 mm (17/64 inch) hole for the fir-tree mount.

8. Stow the excess wire as follows:
 - For concrete mixers, stow the excess wire on the underside of the left frame rail. Use cable ties to secure the excess wire to the previously installed section of wire.
 - For mortar mixers, coil the excess wire and bundle it with a cable tie. Stow the bundled excess wire **inside** the center frame rail, and secure the bundle with another cable tie as near as possible to the edge clip.
 - If there is excess wire between the left light and the right light, bundle it with a cable tie, and secure it to a previously installed section of wire with another cable tie.

Important: Ensure that any excess length in the wire harness is secure with cable ties and will not come loose.

3

Installing the Lights

Parts needed for this procedure:

2	Light
1	License-plate holder
4	Nut

Procedure

1. Position the license-plate holder onto the posts of the light with the clear bottom lens, so that the clear lens is facing the license-plate holder (Figure 13).

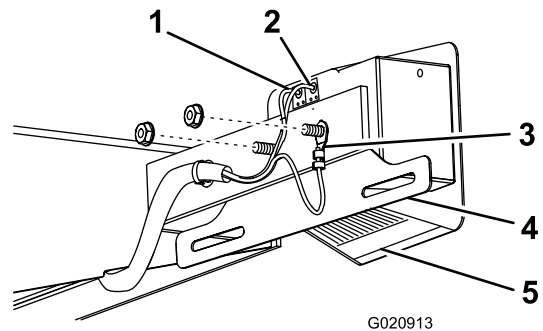


Figure 13
Left light

1. Yellow wire—stop and turn
2. Brown wire—tail light
3. White wire—ground
4. License-plate holder
5. Clear lens

Note: This is the left light, which illuminates the license plate through the clear lens.

2. Install the light so that the posts go into the holes in the bracket on the left side of the machine (Figure 13).
3. Install the round terminal of the ground wire (white) onto the outside threaded post (Figure 13).
4. Install the nuts onto the threaded posts; tighten them by hand to prevent cross-threading, then use a wrench to secure them until they are snug.

Important: Do not overtighten the nuts, or the plastic housing will break.

5. Push the wires into the appropriate holes in the light (Figure 13).

Note: If you need to remove a wire from the light, insert the end of a paper clip into the small hole under the wire, then pull the wire out.

6. Repeat steps 2 through 5 for the light on the right-hand side of the machine (Figure 14).

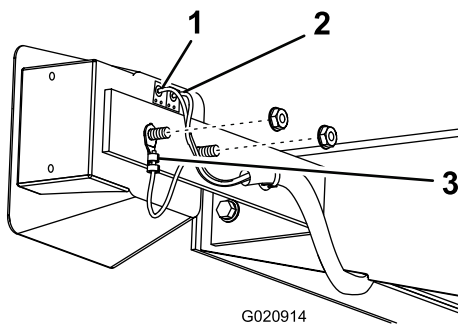


Figure 14
Right light

1. Green wire—stop and turn 3. White wire—ground
2. Brown wire—tail light

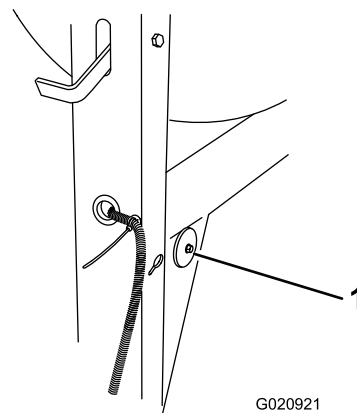


Figure 16
Model 68024

4

Installing the Reflectors

Parts needed for this procedure:

2	Reflector
2	Bolt
2	Nut

Procedure

1. Align the hole in a reflector to the hole in 1 side of the front post on the machine (Figure 15).

Note: For older models, drill a 7.5 mm (9/32 inch) hole for each bolt.

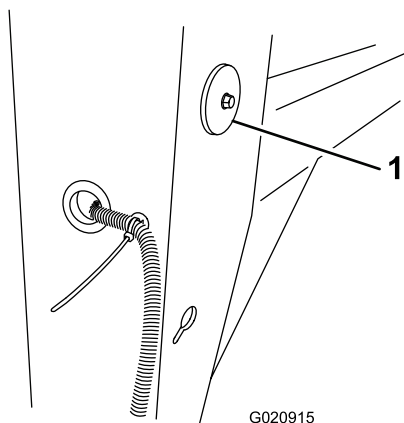


Figure 15

1. Reflector

Note: For model 68024, mount the reflectors on the triangular supports (Figure 16).

1. Reflector

2. Insert a bolt through the reflector and the frame, and install a nut on the other side.
3. Use a wrench on the bolt and another wrench on the nut to tighten them until they are snug.

Important: Do not overtighten the nuts and bolts, or the plastic reflectors will break.

4. Repeat steps 1 through 3 for the other side.

5

Replacing the Light Bulbs

No Parts Required

Replacing the Rear-facing Bulbs

Note: The left rear-facing bulb also illuminates license plate.

1. Use a screwdriver to remove the 4 screws from the large square lens on the light (Figure 17).

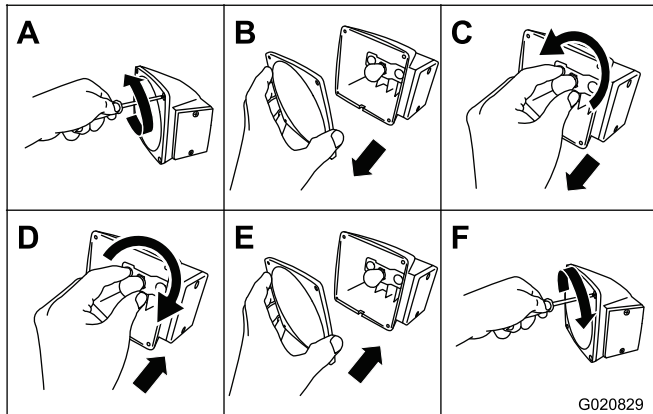


Figure 17

2. Remove the lens (Figure 17).
3. Push and twist the bulb counterclockwise to remove it from the socket (Figure 17).
4. Push a new 1157 bulb into the socket and then twist it clockwise (Figure 17).
5. Install the lens and the 4 screws (Figure 17).

Replacing the Side-facing Bulbs

1. Use a screwdriver to remove the 2 screws from the small rectangular lens on the side of the light (Figure 18).

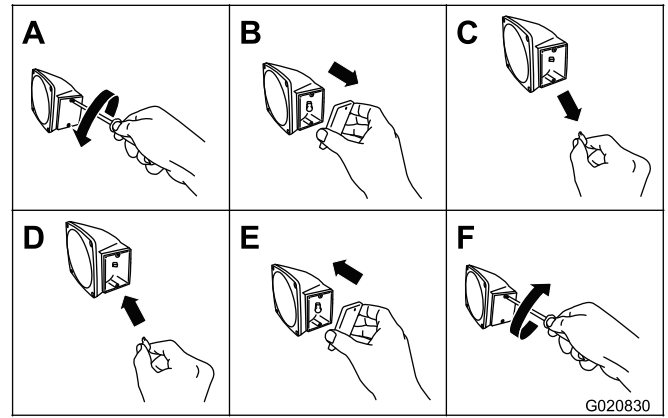


Figure 18

2. Remove the lens (Figure 18).
3. Pull the bulb out of the socket (Figure 18).
4. Push a new 168 bulb into the socket (Figure 18).
5. Install the lens and the 2 screws (Figure 18).