



Hand Spray Wand Kit

Multi Pro 1750 or Multi Pro WM Turf Sprayer

Model No. 41131

Operator's Manual

The hand spray wand kit is an attachment for a turf spray application vehicle and is intended to be used by professional, hired operators in commercial applications. It is primarily designed for spraying on well-maintained lawns in parks, golf courses, sports fields, and on commercial grounds.

⚠ WARNING

CALIFORNIA Proposition 65 Warning

This product contains a chemical or chemicals known to the State of California to cause cancer, birth defects, or reproductive harm.

Use of this product may cause exposure to chemicals known to the State of California to cause cancer, birth defects, or other reproductive harm.

Setup

Loose Parts

Use the chart below to verify that all parts have been shipped.

Procedure	Description	Qty.	Use
1	No parts required	–	Prepare the machine.
2	Hose hook Flat washer Flange-head nut Carriage bolt R-clamp Spray gun bracket	1 2 4 4 2 1	Install the hose hook and spray gun bracket.
3	Manual valve assembly Threaded rod O-ring Hosebarb	1 4 1 1	Install the valve assembly.
4	Hose Hose clamp	1 1	Install the supply hose.
5	Spray gun assembly Hose clamp	1 1	Connect the spray hose.

Note: Determine the left and right sides of the machine from the normal operating position.

Note: Thread sealing tape is used in the installation of this kit.



1

Preparing the Machine

No Parts Required

Procedure

1. Ensure that the machine is empty of all fluids. If chemicals have been used in the machine, flush the system thoroughly with clean water and drain the water; refer to your vehicle *Operator's Manual* for instructions.
2. Disconnect the negative battery terminal from the battery.

2

Installing the Hose Hook and Spray Gun Bracket

Parts needed for this procedure:

1	Hose hook
2	Flat washer
4	Flange-head nut
4	Carriage bolt
2	R-clamp
1	Spray gun bracket

Procedure

1. Attach the 2 R-clamps to the spray gun bracket using 2 carriage bolts and flange-head nuts.
2. Loosen the tank strap.
 - For the Multi Pro 1750, loosen the front, right-hand tank strap (Figure 1).

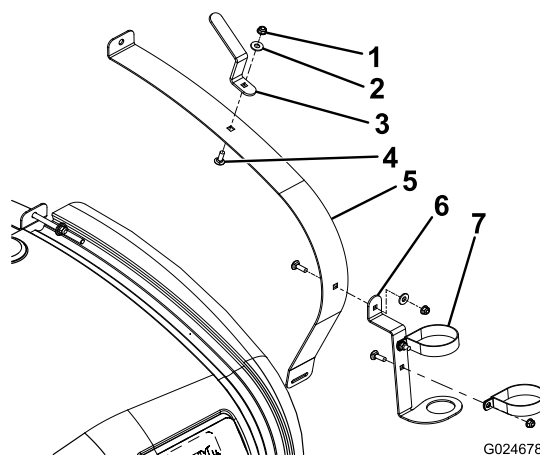


Figure 1
Multi Pro 1750

1. Flange-head nut
2. Flat washer
3. Hose hook
4. Carriage bolt
5. Front, right-hand tank strap
6. Spray gun bracket
7. R-clamp

- For the Multi Pro WM, loosen the rear, right-hand tank strap (Figure 2).

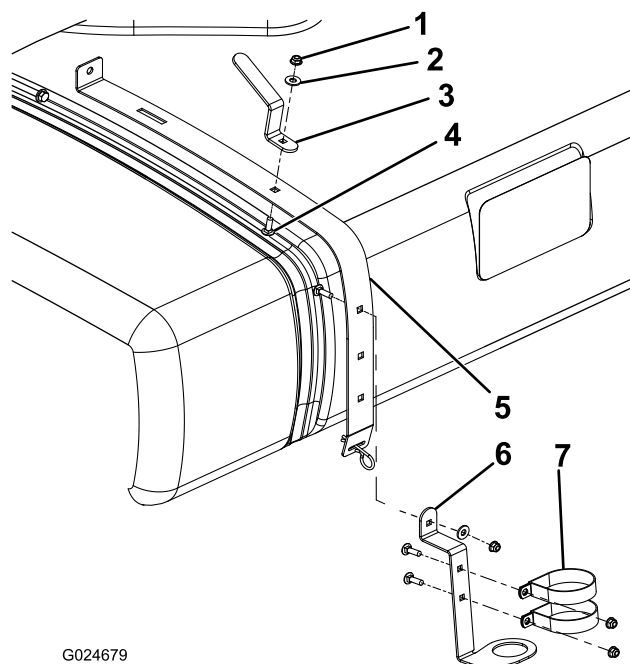


Figure 2
Multi Pro WM

1. Flange-head nut
2. Flat washer
3. Hose hook
4. Carriage bolt
5. Rear, right-hand tank strap
6. Spray gun bracket
7. R-clamp

3. Install the spray gun bracket as shown in Figure 1 or Figure 2 using a carriage bolt, flat washer, and flange-head nut.

4. Install the hose hook as shown in Figure 1 or Figure 2 using a carriage bolt, flat washer, and flange-head nut.

3

Installing the Manual Valve

Parts needed for this procedure:

1	Manual valve assembly
4	Threaded rod
1	O-ring
1	Hosebarb

Procedure

1. Remove the 4 threaded rods securing the pressure-gauge port to the boom valves and discard them (Figure 3). Retain the flat washers and nuts.

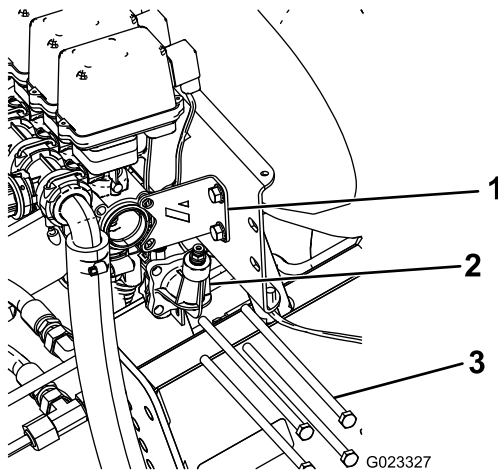


Figure 3

1. Stabilizing bracket
2. Pressure-gauge port
3. Threaded rod

2. Remove and retain the 2 bolts and nuts securing the stabilizing bracket to the valve assembly (Figure 3).
3. Install the O-ring, manual valve assembly, previously removed pressure-gauge port, and the stabilizing bracket using the 4 threaded rods and retained flat washers and nuts; refer to Figure 4.

Note: Torque all fasteners to 4.5 N-m (32–40 lb-inches).

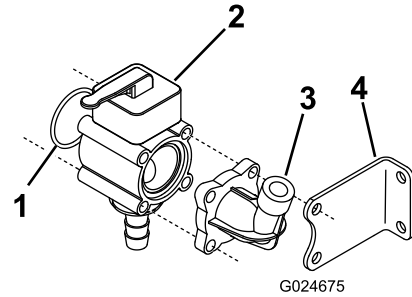


Figure 4

1. O-ring
2. Manual valve
3. Pressure-gauge port
4. Stabilizing bracket

4. Secure the bolts of the stabilizing bracket to the mounting rail.

4

Installing the Supply Hose

Parts needed for this procedure:

1	Hose
1	Hose clamp

Procedure

1. Slide a hose clamp over the open end of the hose and install the hose over the exposed barb in the manual valve.

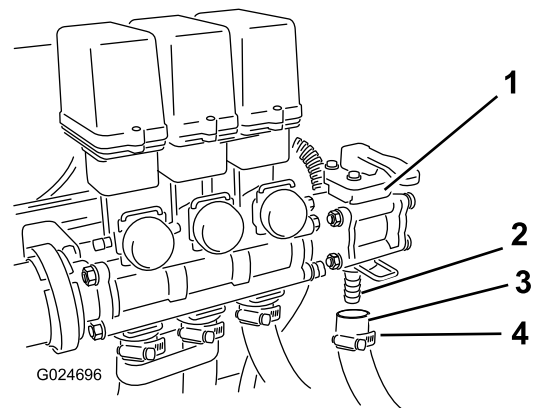


Figure 5

1. Manual valve
2. Barb
3. Hose
4. Hose clamp

2. Move the hose clamp over the barb and tighten to secure the hose to the valve assembly.

5

Connecting the Spray Hose

Parts needed for this procedure:

1	Spray gun assembly
1	Hose clamp

Procedure

1. Connect the free end of the spray gun hose to the fitting on the spray gun (Figure 6).

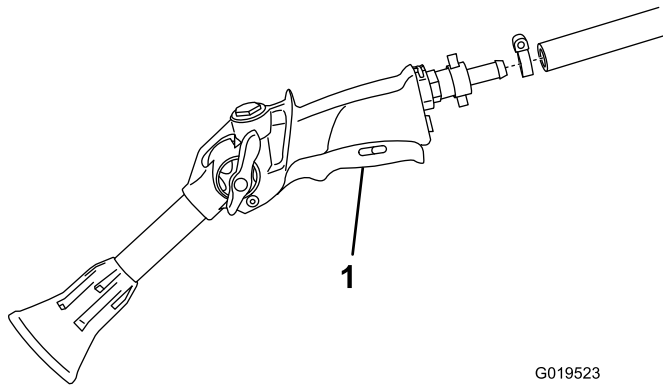


Figure 6

G019523

1. Spray gun
-
2. Secure the end of the hose with a hose clamp.
 3. Wrap the excess hose around the hook on the tank, and store the spray gun in the bracket.
 4. Connect the negative battery wire to the battery.

Operation

⚠ WARNING

Fluid under pressure can penetrate skin and cause injury.

- Keep your body and hands away from nozzles that eject high pressure fluid.
- Do not aim the sprayer at any person or animal.
- Ensure that all fluid hoses and lines are in good condition and all connections and fittings are tight before applying pressure to the system.
- Use cardboard or paper to find leaks.
- Safely relieve all pressure in the system before performing any work on it.
- Get immediate medical help if fluid is injected into the skin.
- Hot liquids and chemicals can cause burns or other harm.

Turf Care Precautions while Operating in Stationary Modes

Important: Under some conditions, heat from the engine, radiator, and muffler can potentially damage the grass when operating the sprayer in a stationary mode. Stationary modes include tank agitation, hand spraying, or using a walking boom.

Use the following precautions:

- **Avoid** stationary spraying when conditions are very hot and/or dry, as turf can be more stressed during these periods.
- **Avoid** parking on the turf while stationary spraying. Park on a cart path whenever possible.
- **Minimize** the amount of time the machine is left running over any particular area of turf. Both time and temperature affect how much the grass may be damaged.
- **Set the engine speed as low as possible** to achieve the desired pressure and flow. This will minimize the heat generated and the air velocity from the cooling fan.
- **Allow heat to escape** upward from the engine compartment by raising the engine guard/seat assemblies during stationary operation rather than being forced out under the vehicle. Refer to your *Operator's Manual* for more information on raising the seat assemblies.

Note: Use a heat shield blanket underneath the vehicle during stationary operation if you desire additional heat protection. Contact an Authorized Toro Dealer to obtain a Toro heat shield blanket kit for turf sprayers.

Switching from Boom Spray Mode to Hand Spray Mode

1. Stop the machine, turn the booms off, and set the parking brake.

⚠ WARNING

Driving while using the hand sprayer can cause loss of control, resulting in injury or death. Do not operate the hand sprayer while driving.

2. At the back of the machine, ensure that the trigger lock on the spray gun is locked.
3. Flip the lever on the control valve to the Open position.
4. At the operator's position, turn the pump on.
5. Switch the master boom to the On position.
6. Set the engine to the desired rpm, then engage the neutral engine speed lock.

Important: Do not use a pressure setting higher than 1034 kPa (150 psi) with the hand sprayer.

Switching from Hand Spray Mode to Boom Spray Mode

1. Flip the lever on the control valve to the Closed position.
2. Direct the spray gun nozzle at an area where it is safe to spray, release the trigger lock, and pull the trigger until all remaining fluid is out of the hose, then set the trigger lock.
3. Return the spray gun to the holder.
4. Return the engine to idle speed.
5. Stop the pump.

Important: Ensure that you flush the spray gun with fresh clean water during your daily cleaning routine (refer to your sprayer *Operator's Manual*). Failure to properly clean the spray gun may degrade the performance and reliability of the spray gun.

6. Use the rate switch to set the desired kPa (psi).

Notes:

Notes:



Count on it.