



**Count on it.**

# Parts Catalog

## **48in Blower and Drive Kit**

**E-Z Vac™ Twin Bagger for TITAN®  
Zero-Turn-Radius Riding Mower**

**Model No. 79340—Serial No. 313000001 and Up**



# Ordering Replacement Parts

To order replacement parts, please supply the part number, the quantity, and the description of each part desired.

## Understanding Reference Numbers

Each identified part in an illustration has a reference number. The reference number for a part also appears in the parts list, along with other information about the part.

This catalog uses two special reference number formats, one to indicate parts in a service assembly and another to indicate the quantity of a given part in an illustration.

## Service Assembly Reference Numbers

Parts in service assemblies have reference numbers in the form a:b. The a represents the reference number of the entire service assembly and the b represents a sequential number unique to each part within the service assembly.

For example, a wheel assembly might be identified by reference number 6, the tire by 6:1, the valve by 6:2, and the wheel by 6:3. When you order the assembly identified by reference number 6, you receive all parts identified by reference numbers 6:1, 6:2, and 6:3. However, you may also order any part individually. Reference numbers of this type appear in illustration and in parts lists.

## Reference Numbers Indicating Quantity

In an illustration, if a reference number indicates more than one part, the reference number has the form nX y. The n represents the quantity of the part, the X is the multiplication symbol, and the y represents the reference number.

For example, in an illustration, the reference number 2X 37 means that two of the parts identified by reference number 37 are indicated.

# List of Abbreviations

**AR:** as required

**ASM:** assembly

**BBC:** blade brake control

**BHTF:** button head thread forming

**CARR:** carriage

**CCW:** counter clockwise

**CW:** clockwise

**DEG:** degrees

**DPA:** Dual Point Adjustment

**ECM:** electronic control module

**EXT:** external

**FH:** flat head

**GA:** gauge

**HD:** heavy-duty

**HF:** hex flange

**HH:** hex head

**HHF:** hex head flange

**HHFTF:** hex head flange thread forming

**HJ:** hex jam

**HLH:** hex lag head

**HOC:** height-of-cut

**HSBH:** hex socket button head

**HSFH:** hex socket flat head

**HSH:** hex socket head

**HWH:** hex washer head

**HWHTF:** hex washer head thread forming

**HYD:** hydraulic

**LH:** left hand

**LP:** Liquefied Petroleum Gas

**LPG:** Liquefied Petroleum Gas

**NI:** nylon insert

**NPTF:** national pipe thread fine

**PFH:** phillips flat head

**PPH:** phillips pan head

**PPHTF:** phillips pan head thread forming

**PRH:** phillips round head

**PTH:** phillips truss head

**PTO:** power-take-off

**RH:** right hand

**ROPS:** roll-over protection system

**RRB:** rear roller brush

**SFH:** slotted fillister head

**SHH:** slotted hex head

**SHWH:** slotted hex washer head

**SPH:** slotted pan head

**SQH:** square head

**SRH:** slotted round head

**STD:** standard

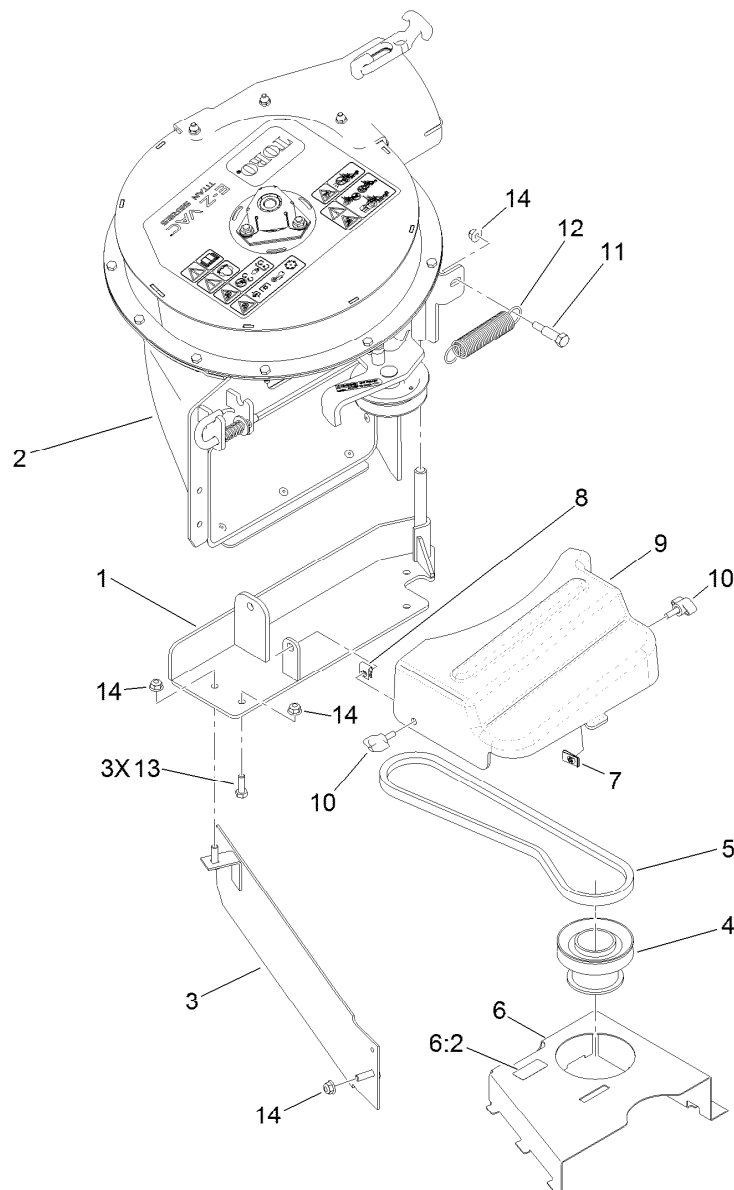
**TAP:** self tapping

**TTH:** torx truss head

# Contents

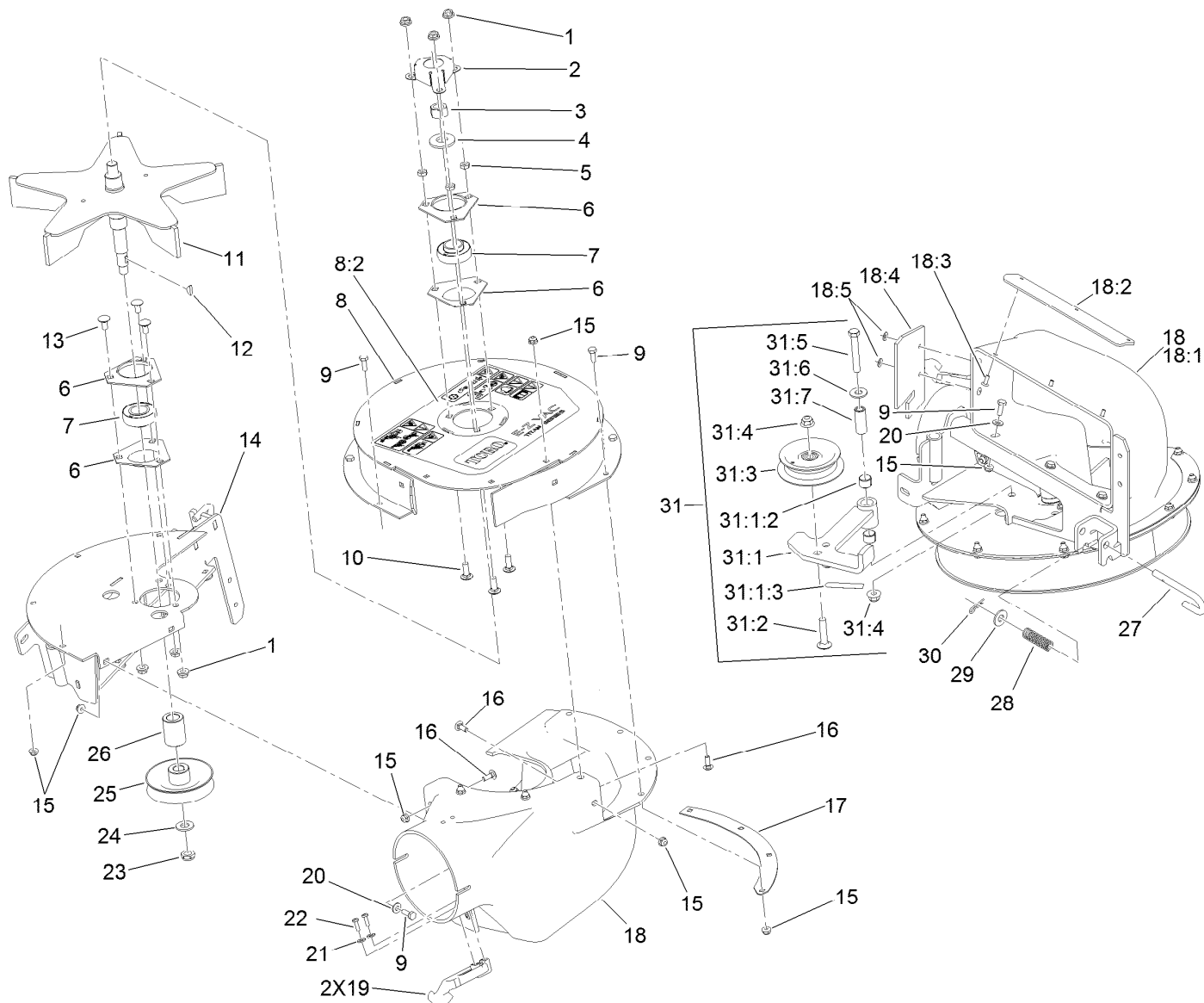
Blower and Drive Assembly ..... 4

Blower Housing Assembly No. 125-1730..... 5



## Blower and Drive Assembly

Ref.	Part Number	Qty.	Description
1	121-0700-03	1	Support-Blower
2	125-1730	1	Blower Housing ASM
3	117-7419-03	1	Baffle
4	125-0085	1	Pulley-Bagger
5	127-0074	1	Belt-V
6	125-5563	1	Cover ASM
6:2	114-1606	1	Decal-Danger
7	3290-199	1	Nut-Speed
8	609900	1	Nut-Speed
9	125-1808	1	Cover-Belt
10	98-8332	2	Knob
11	7-0030	1	Screw-Shoulder, HH
12	1-603693	1	Spring-Extension
13	322-5	3	Screw-HH
14	104-8300	6	Nut-Flange, NI

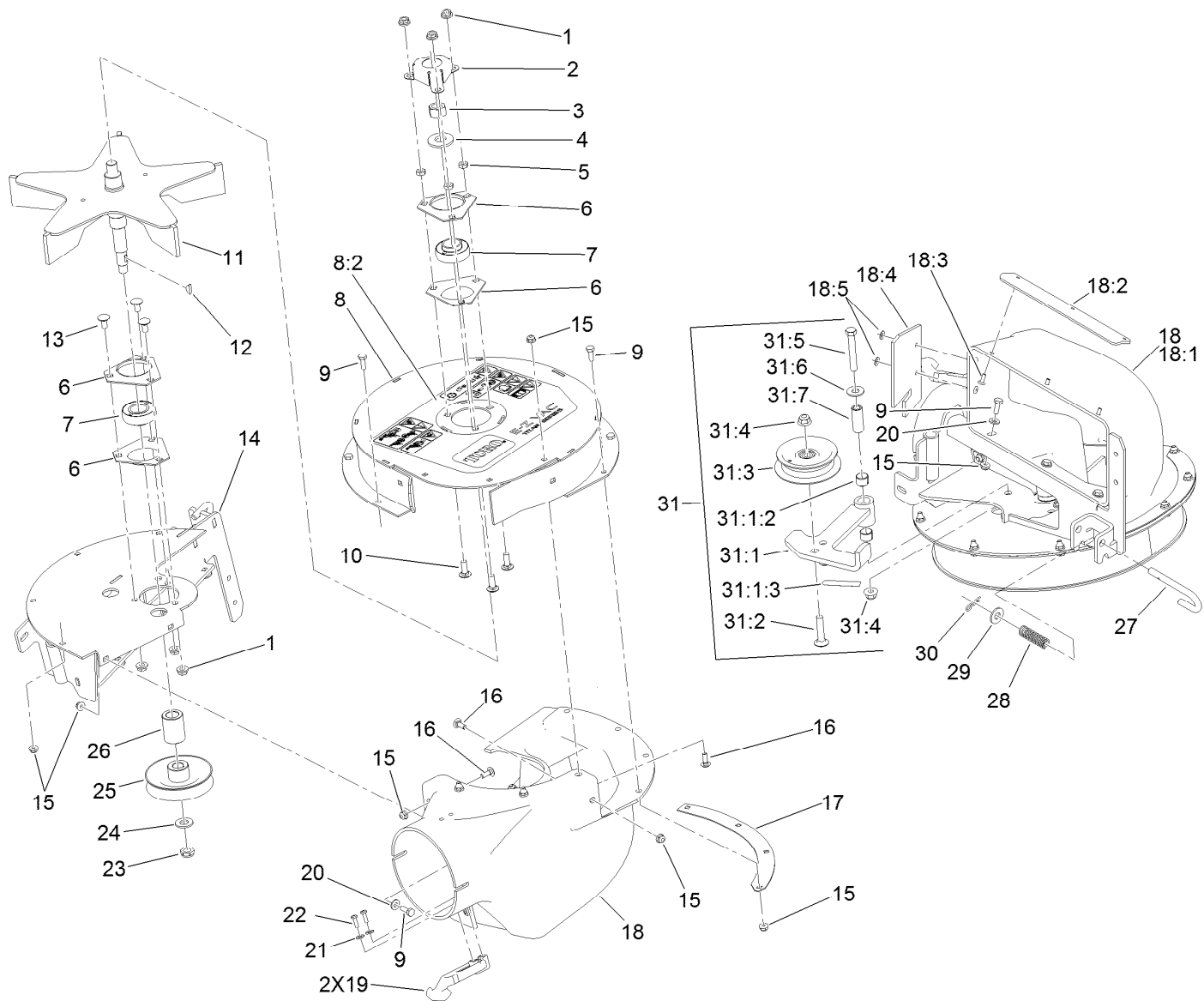


## Blower Housing Assembly No. 125-1730

Ref.	Part Number	Qty.	Description
1	32128-20	6	Nut-HF
2	116-4776	1	Cover-Nut
3	3219-6	1	Nut-Hex
4	1-513208	1	Washer-Spring
5	3218-2	3	Nut-Jam
6	1-513013	4	Housing-Flange
7	1-653346	2	Bearing-SPH
8	125-1731	1	Upper Housing ASM
8:2	125-5502	1	Decal-Warning
9	321-4	13	Screw-HH
10	3230-10	3	Screw-CARR
11	103-3815	1	Impeller
12	3257-32	1	Key-Woodruff
13	3230-18	3	Screw-CARR
14	121-0781-03	1	Frame-Blower
15	104-7201	18	Nut-HF
16	3229-1	5	Bolt-CARR
17	116-4434-03	1	Plate-Backing, Blower

Ref.	Part Number	Qty.	Description
18	125-1732	1	Blower Chute ASM
18:1	116-4991	1	Chute-Blower, Small
18:2	125-5562-03	1	Plate-Stiffener
18:3	114439	5	Rivet-Pop
18:4	125-5492	1	Baffle-Housing
18:5	9202704	2	Washer
19	103-4080	2	Latch-Rubber
20	3256-22	5	Washer-Flat
21	3256-14	4	Washer-Flat
22	3290-500	4	Screw-PPH
23	3296-28	1	Nut-Lock, NI
24	3256-26	1	Washer-Flat
25	112-2345	1	Pulley
26	1-653365	1	Spacer
27	116-4356	1	Pin-Latch
28	121-3249	1	Spring-Compression
29	3256-4	1	Washer-Flat
30	3290-307	1	Pin-Hair

● Not serviced separately



## Blower Housing Assembly No. 125-1730 (continued)

Ref.	Part Number	Qty.	Description
31		1	Idler Arm ASM ●
31:1	117-8638	1	Idler Arm With Bushing ASM
31:1:2	1-653600	2	Bushing
31:1:3	1-653558	1	Decal-Warning
31:2	3231-5	1	Screw-CARR

Ref.	Part Number	Qty.	Description
31:3	103-1103	1	Idler-Flat
31:4	104-8301	2	Nut-Flange, NI
31:5	323-12	1	Screw-HH
31:6	3256-4	1	Washer-Flat
31:7	1-603044	1	Bushing

● Not serviced separately

**Notes:**



**Count on it.**