



# Shock Kit

## Multi-Pro® 5800 Turf Sprayer

Model No. 127-2937

### Installation Instructions

The kit includes a replacement shock absorber for a worn or damaged shock absorber.

#### **⚠ WARNING**

##### **CALIFORNIA Proposition 65 Warning**

This product contains a chemical or chemicals known to the State of California to cause cancer, birth defects, or reproductive harm.

Use of this product may cause exposure to chemicals known to the State of California to cause cancer, birth defects, or other reproductive harm.

## Installation

### Loose Parts

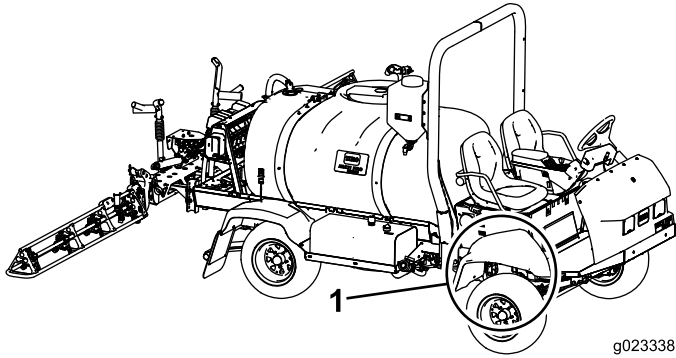
Use the chart below to verify that all parts have been shipped.

Description	Qty.	Use
Nut	2	Installing the shock absorber.
Spacer	2	
Bushing	4	
Shock absorber	1	
Sleeve	2	
Washer	2	
Bolt	2	



# Installing the Shock Absorber

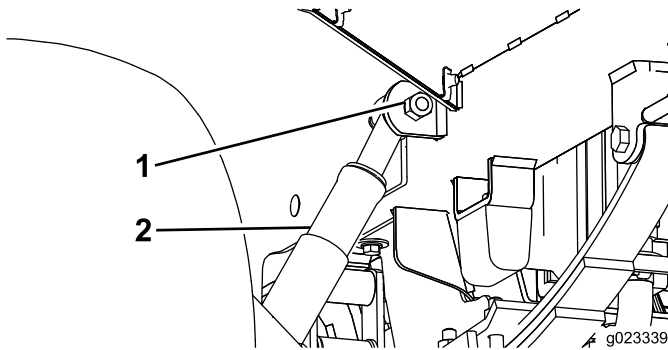
1. Turn off the machine and allow it to cool.
2. Disconnect the negative battery cable from the battery.
3. Locate the wheel well of the front end of the machine.



**Figure 1**

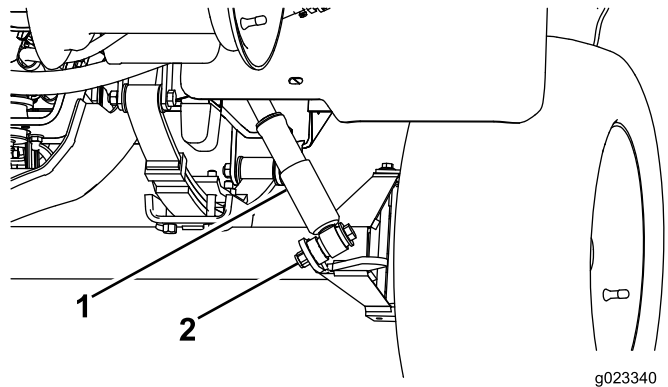
1. Wheel well

4. Raise the front end of the machine up, and support the front end with a suitable jack stand.
5. Remove the old shock absorber by unscrewing the nuts and bolts from the shock absorber (Figure 2 and Figure 3).



**Figure 2**

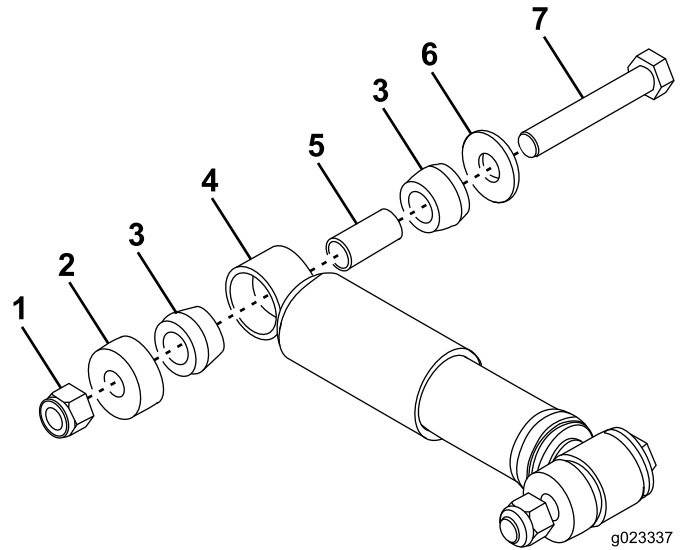
1. Nut
2. Shock



**Figure 3**

1. Shock
2. Nut

6. Install the new shock absorber (Figure 4) by screwing it in on the same points as the old one was removed (Figure 2 and Figure 3).



**Figure 4**

1. Nut
2. Spacer
3. Bushing
4. Shock
5. Sleeve
6. Washer
7. Bolt

7. Connect the negative battery cable.