



Count on it.

Parts Catalog

Versa Vac

Model No. 07053—Serial No. 240000001 and Up



Ordering Replacement Parts

To order replacement parts, please supply the part number, the quantity, and the description of each part desired.

Understanding Reference Numbers

Each identified part in an illustration has a reference number. The reference number for a part also appears in the parts list, along with other information about the part.

This catalog uses two special reference number formats, one to indicate parts in a service assembly and another to indicate the quantity of a given part in an illustration.

Service Assembly Reference Numbers

Parts in service assemblies have reference numbers in the form a:b. The a represents the reference number of the entire service assembly and the b represents a sequential number unique to each part within the service assembly.

For example, a wheel assembly might be identified by reference number 6, the tire by 6:1, the valve by 6:2, and the wheel by 6:3. When you order the assembly identified by reference number 6, you receive all parts identified by reference numbers 6:1, 6:2, and 6:3. However, you may also order any part individually. Reference numbers of this type appear in illustration and in parts lists.

Reference Numbers Indicating Quantity

In an illustration, if a reference number indicates more than one part, the reference number has the form nX y. The n represents the quantity of the part, the X is the multiplication symbol, and the y represents the reference number.

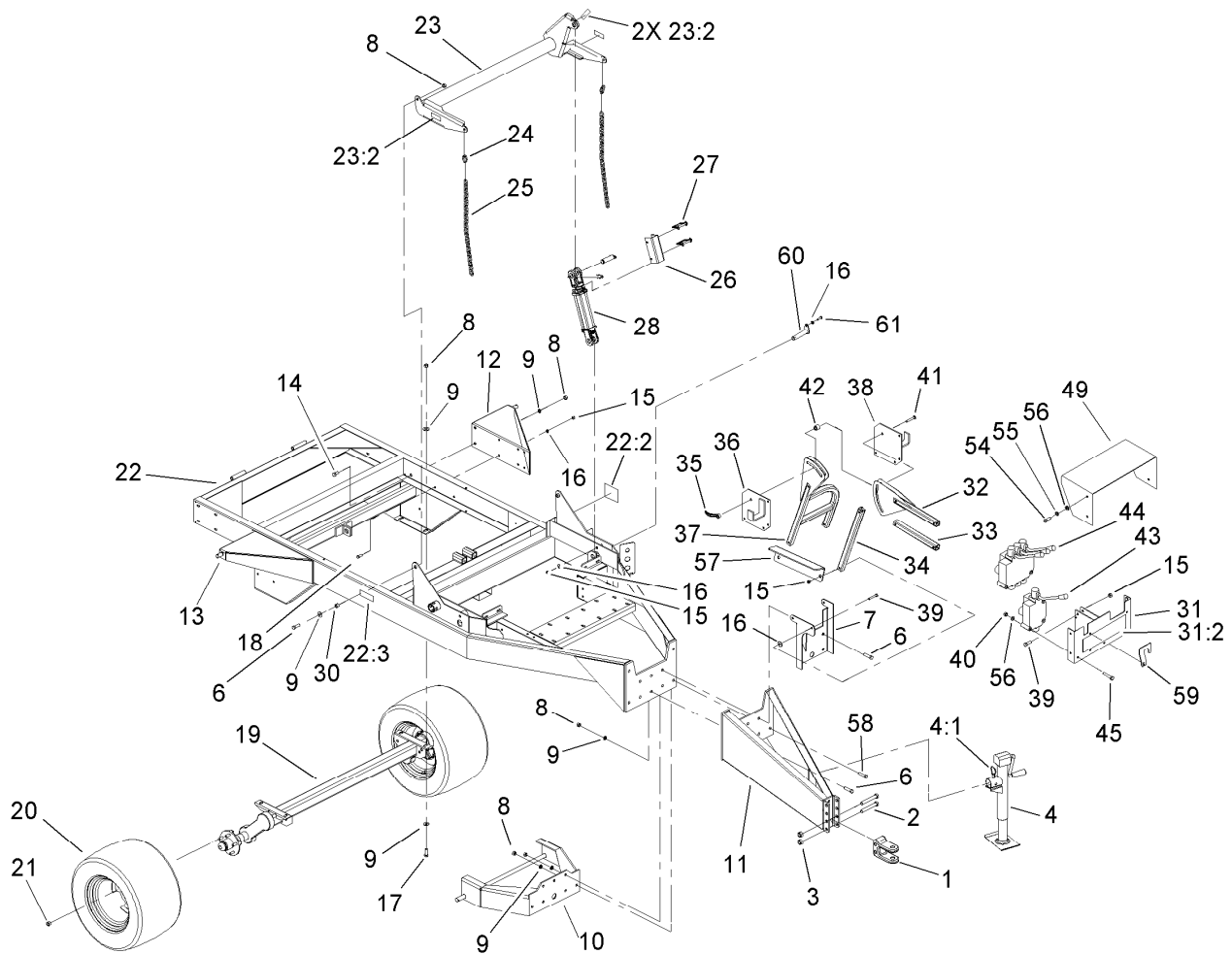
For example, in an illustration, the reference number 2X 37 means that two of the parts identified by reference number 37 are indicated.

List of Abbreviations

AR: as required	HLH: hex lag head	PTO: power-take-off
ASM: assembly	HOC: height-of-cut	RH: right hand
BBC: blade brake control	HSBH: hex socket button head	ROPS: roll-over protection system
BHTF: button head thread forming	HSFH: hex socket flat head	RRB: rear roller brush
CARR: carriage	HSH: hex socket head	SFH: slotted fillister head
CCW: counter clockwise	HWH: hex washer head	SHH: slotted hex head
CW: clockwise	HWHTF: hex washer head thread forming	SHWH: slotted hex washer head
DEG: degrees	HYD: hydraulic	SPH: slotted pan head
DPA: Dual Point Adjustment	LH: left hand	SQH: square head
ECM: electronic control module	LP: Liquefied Petroleum Gas	SRH: slotted round head
EXT: external	LPG: Liquefied Petroleum Gas	STD: standard
FH: flat head	NI: nylon insert	TAP: self tapping
GA: gauge	NPTF: national pipe thread fine	TTH: torx truss head
HD: heavy-duty	PFH: phillips flat head	
HF: hex flange	PPH: phillips pan head	
HH: hex head	PPHTF: phillips pan head thread forming	
HHF: hex head flange	PRH: phillips round head	
HHFTF: hex head flange thread forming	PTH: phillips truss head	
HJ: hex jam		

Contents

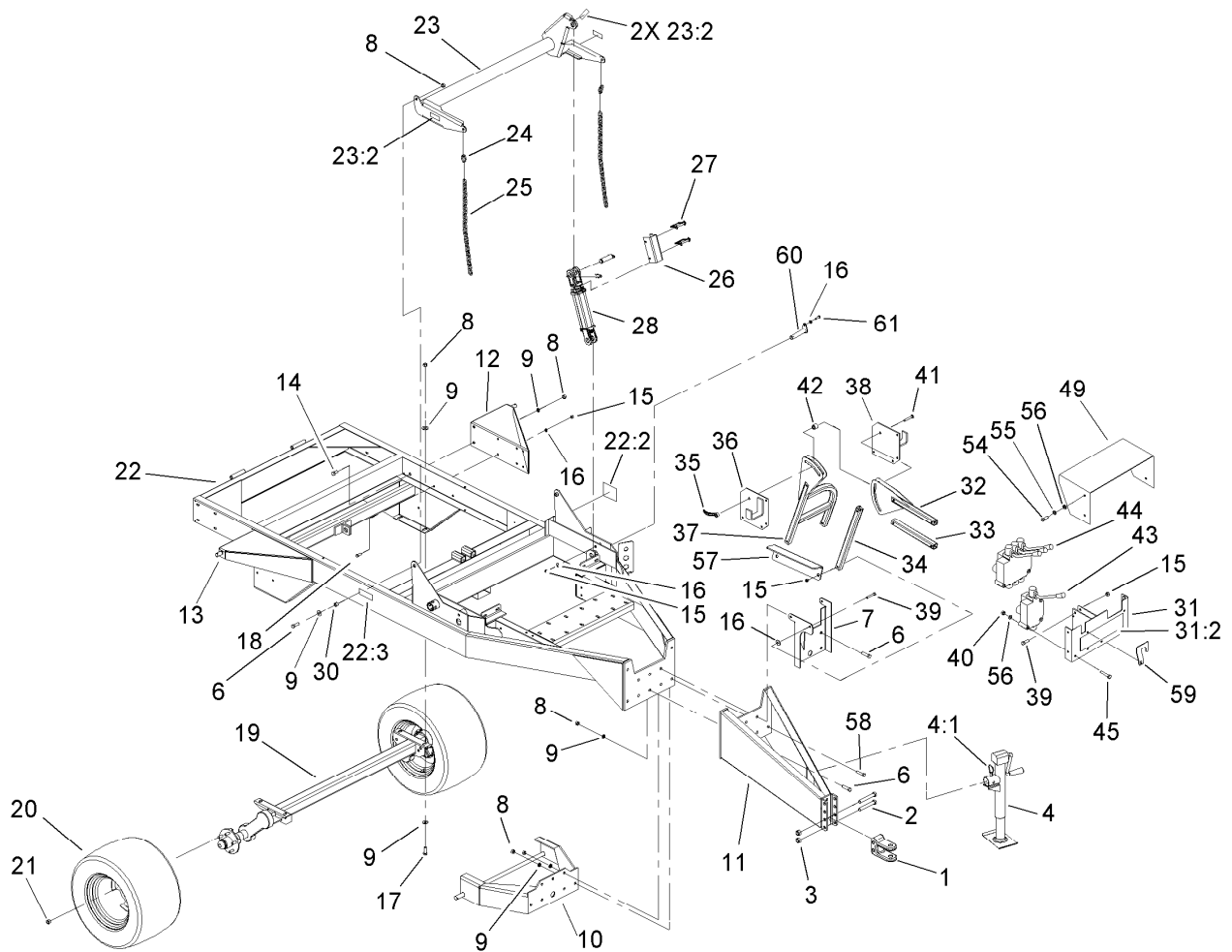
Frame and Axle Assembly	4
Impeller Assembly	6
Drive Assembly	7
Power-Take-Off Shaft and Shield Assembly	8
Double Power-Take-Off Shaft Assembly No. SVA10500	9
Sidewall Assembly	10
Left Hand Sidewall Assembly	11
Right Hand Sidewall Assembly	12
Door Assembly	13
Link-Lower Door Assembly	14
Cylinder Assembly	15
Hydraulic Assembly	16



Frame and Axle Assembly

Ref.	Part Number	Qty.	Description	Ref.	Part Number	Qty.	Description
1	SV112-02-03	1	Hitch-Clevis	23	106-0190	1	Arm-Lift
2	327-23	2	Screw-HH	23:2	93-6674	3	Decal-Warning
3	3296-53	2	Nut-Lock, NI	24	CSP15000	2	Link-Quick
4	SVP15300	1	Jack	25	SV139-00	2	Chain-Link
4:1	55-7190	1	Pin And Chain ASM	26	SV158-00-03	1	Channel-Lock
6	325-8	5	Screw-HH	27	PF244-00	2	Pin-Wire, Lock
7	SVA17500-03	1	Base-Stand	28	106-0389	1	Cylinder ASM
8	3296-23	20	Nut-Lock, NI	30	CS130-00	2	Spacer
9	3256-6	24	Washer-Flat	31	106-0186	1	Mount-Valve
10	SVA11200-03	1	Deck Mount ASM	31:2	106-0183	1	Decal-Panel, Control
11	SV198-00-03	1	Hitch	32	SVA17100-03	1	Stand-Valve
12	SVA11300-03	1	Bracket-Door, Left	33	SVA17200-03	1	Tube-Horizontal
13	SVA11400-03	1	Bracket-Door, Right	34	SVA17000-03	1	Tube-Vertical
14	325-5	4	Screw-HH	35	SVA18500	1	Handle-Locking
15	3296-39	18	Nut-Lock, NI	36	SVA17400-03	1	Hanger-Hose, Right
16	3256-24	19	Washer-Flat	37	SVA16900-03	1	Stand-Vavle
17	325-6	4	Screw-HH	38	SVA17900-03	1	Hanger-Hose, Left
18	323-6	8	Screw-HH	39	323-11	9	Screw-HH
19	SVP20000	1	Axle-Torflex	40	3296-29	6	Nut-Lock, NI
20	SVP15000	2	Tire And Wheel ASM	41	3231-31	1	Screw-CARR
21	242-50	10	Nut-Lug	42	SVA17700	1	Spacer
22	106-0189	1	Frame	43	106-0168	1	Valve-Control, Single Spool
22:2	106-0167	1	Decal-Caution	43:1	107-1551	1	Seal Kit ●
22:3	106-0162	2	Decal-Caution, Stay Clear (Ce)	44	106-0169	1	Valve-Control, Three Spool
				44:1	107-1550	1	Seal Kit ●

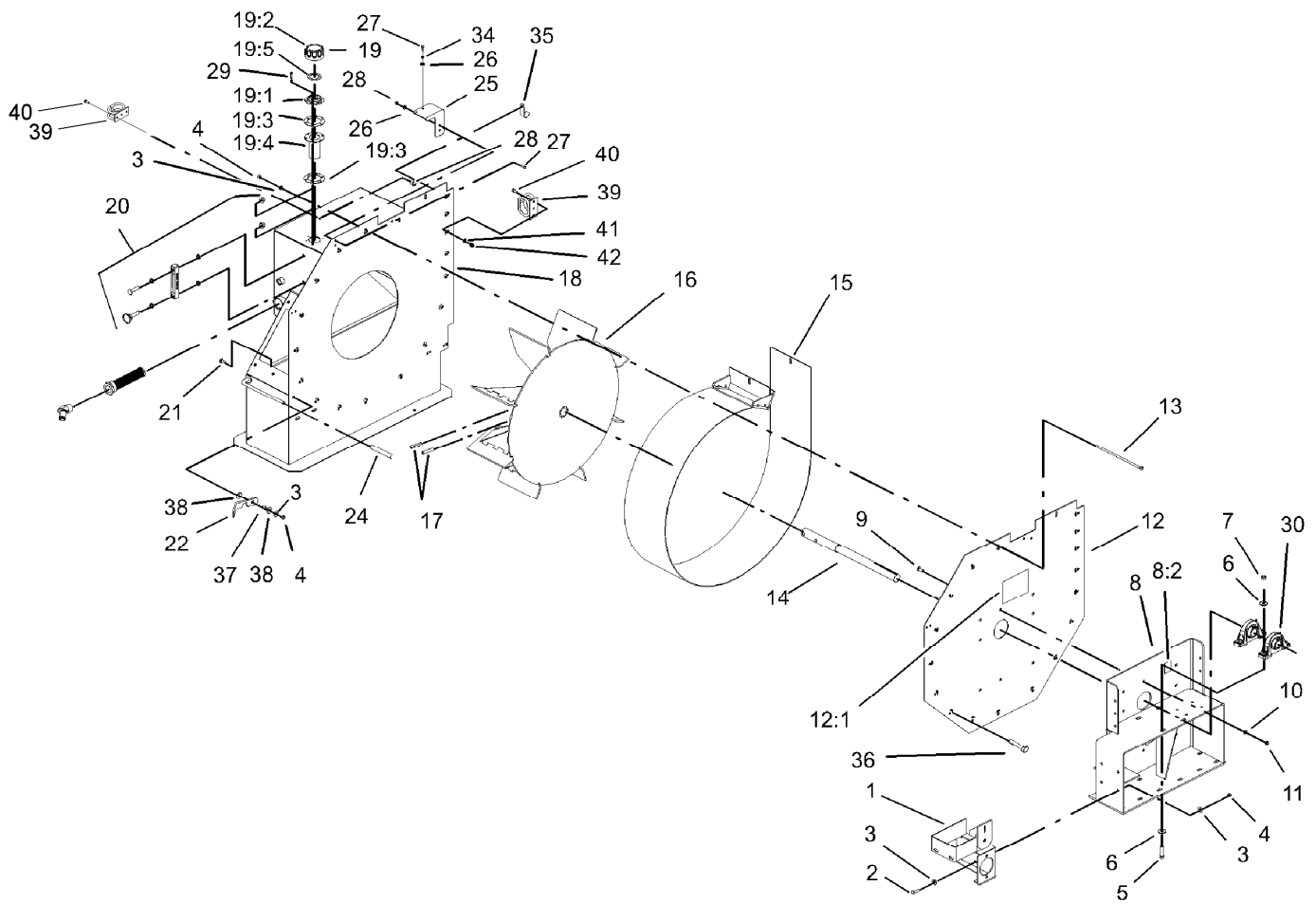
● Not illustrated



Frame and Axle Assembly (continued)

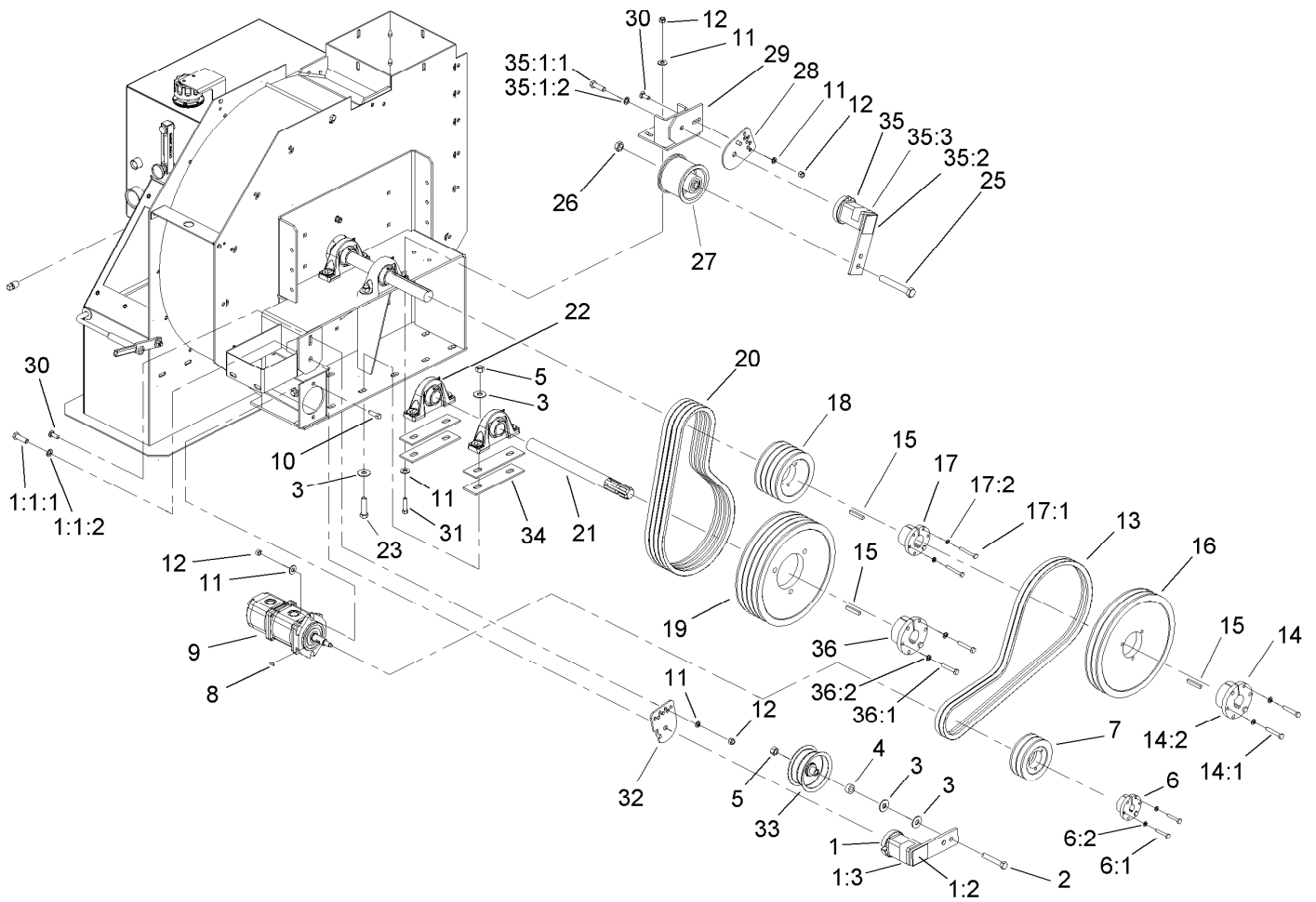
<i>Ref.</i>	<i>Part Number</i>	<i>Qty.</i>	<i>Description</i>	<i>Ref.</i>	<i>Part Number</i>	<i>Qty.</i>	<i>Description</i>
45	322-13	6	Screw-HH	56	3256-23	10	Washer-Flat
49	106-0171-03	1	Guard-Hose	57	105-4855-03	1	Support
50	SV136-00-03	1	Roller-Chain ●	58	325-10	6	Screw-HH
52	325-12	1	Screw-HH ●	59	105-4920-03	1	Lockout-Valve
54	322-2	4	Screw-HH	60	107-1186	1	Pin
55	3253-4	4	Washer-Lock	61	323-7	1	Screw-HH

● Not illustrated



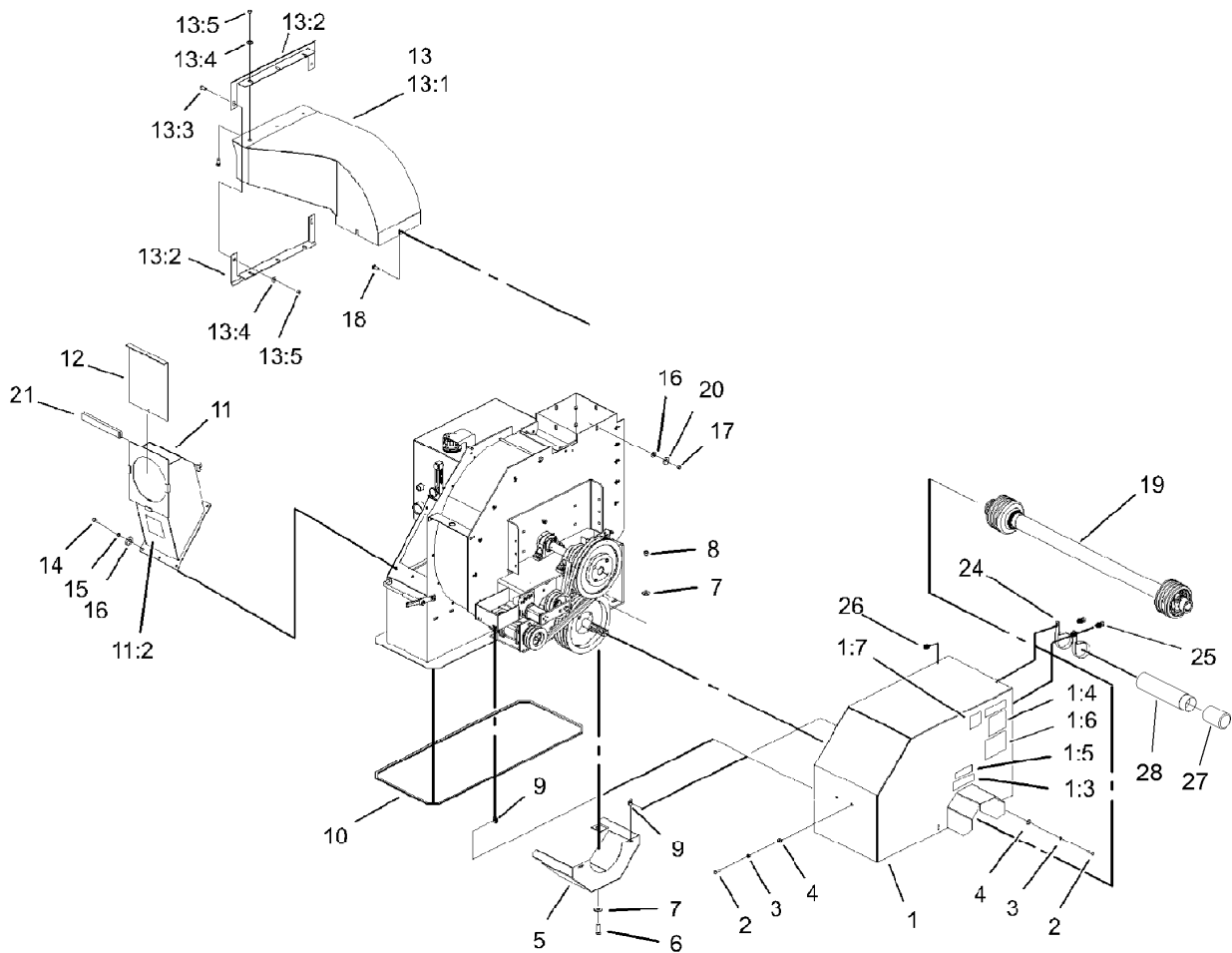
Impeller Assembly

<i>Ref.</i>	<i>Part Number</i>	<i>Qty.</i>	<i>Description</i>	<i>Ref.</i>	<i>Part Number</i>	<i>Qty.</i>	<i>Description</i>
1	105-4868-01	1	Pump Mount ASM	19:3	353-963	2	Gasket
2	323-7	4	Screw-HH	19:4	62-2610	1	Strainer-Cap, Filler
3	3256-4	21	Washer-Flat	19:5	76-1720	1	Gasket-Cap, Filler
4	3296-39	22	Nut-Lock, NI	20	SVB14700	1	Thermometer ASM
5	325-8	4	Screw-HH	21	3231-28	1	Screw-CARR
6	3256-6	8	Washer-Flat	22	106-0236-01	1	Latch
7	3296-23	4	Nut-Lock, NI	24	PF225-00	1	Cover-Handle
8	106-0191	1	Mount-Drive	25	SVB15900-01	1	Mount-Filter
8:2	105-4586	1	Decal-Shield	26	3256-22	6	Washer-Flat
9	3231-2	8	Bolt-CARR	27	321-4	4	Screw-HH
10	3256-4	8	Washer-Flat	28	3296-42	2	Nut-Lock, NI
11	3296-39	8	Nut-Lock, NI	29	32144-89	6	Screw-Thread Forming
12	106-0206	1	Panel-Back	30	106-0332	2	Bearing-Block, Pillow
12:1	66-6140	1	Decal	34	3253-3	2	Washer-Lock
13	106-0184	15	Screw-HH	35	SVB17600-01	1	Hose Hanger
14	SV327-00	1	Shaft-Impeller	36	105-4865	2	Screw-HH
15	SV102-00-01	1	Band ASM	37	92-9025	1	Spacer
16	SV201-00-01	1	Impeller ASM	38	3290-473	2	Washer-Belleville
17	LDB14600	2	Pin-Spiral	39	99-5621	2	Guide-Hose
18	SV305-00-01	1	Funnel ASM	40	322-5	4	Screw-HH
19	95-7004	1	Filler Cap ASM	41	3256-23	4	Washer-Flat
19:1	353-961	1	Flange	42	3296-29	4	Nut-Lock, NI
19:2	353-962	1	Cap ASM				



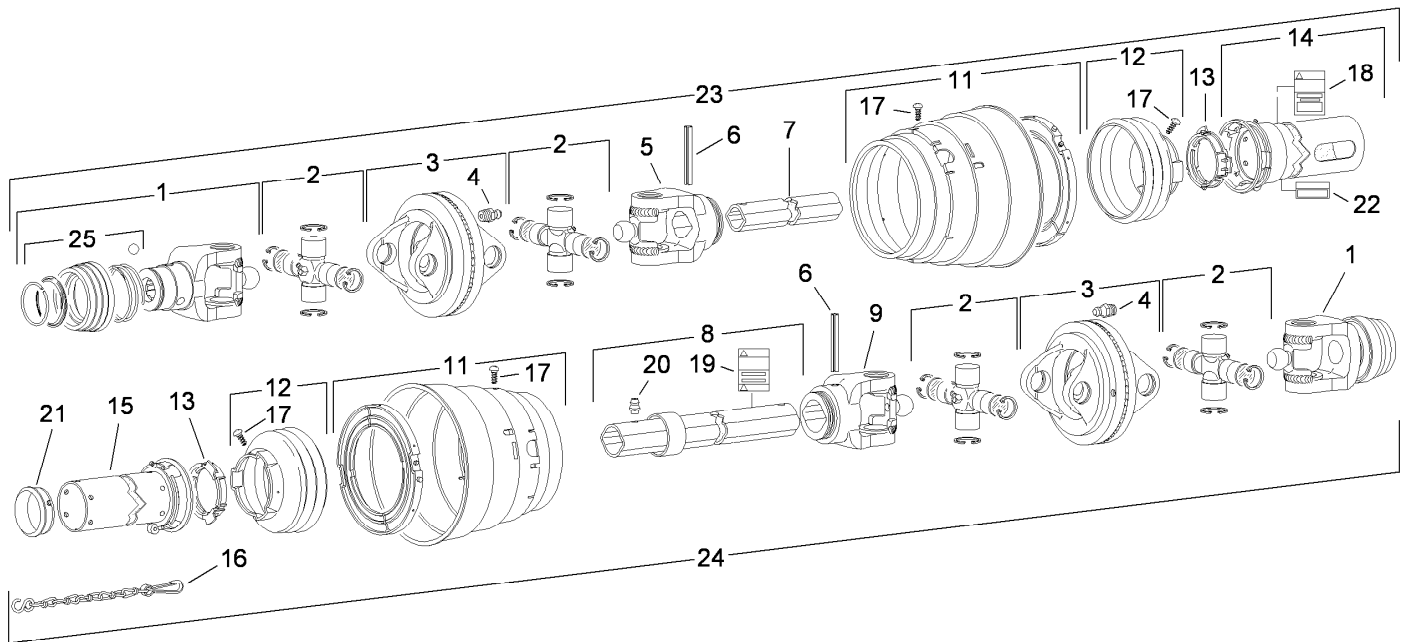
Drive Assembly

Ref.	Part Number	Qty.	Description	Ref.	Part Number	Qty.	Description
1	105-0667	1	Idler Tensioner ASM	17	106-0360	1	Pulley Bushing ASM
1:1:1	33116-040	1	Screw-HH	17:1	321-11	3	Screw-HH
1:1:2	3253-7	1	Washer-Lock	17:2	3253-3	3	Washer-Lock
1:2	105-0668	1	Decal-Align	18	106-0355	1	Pulley
1:3	105-0669	1	Decal-Angle	19	106-0356	1	Pulley
2	325-12	1	Screw-HH	20	SBC17000	4	V-Belt
3	3256-6	10	Washer-Flat	21	SVB13000	1	Shaft-Input
4	GF213-00	1	Spacer	22	106-0332	2	Bearing-Block, Pillow
5	3296-23	5	Nut-Lock, NI	23	325-12	4	Screw-HH
6	106-0357	1	Bushing-Pulley	25	3214-15	1	Screw-HH
6:1	321-9	3	Screw-HH	26	3220-6	1	Nut-Jam
6:2	3253-3	3	Washer-Lock	27	105-4821	1	Idler-Pulley
7	106-0352	1	Pulley	28	105-4839	1	Stabilizer-Tensioner
8	3257-32	1	Key-Woodruff	29	SV286-00-01	1	Bracket-Lovejoy
9	SVA18100	1	Pump-Hyd, Double Gear	30	3231-25	2	Bolt-CARR
9:1	SVA18101	1	Seal Kit (Front Pump-140S6)	31	323-8	4	Screw-HH
9:2	SVA18102	1	Seal Kit (Back Pump-070S)	32	105-4835	1	Stabilizer-Tensioner
10	323-7	6	Screw-HH	33	FBJ11100	1	Pulley-Idler
11	3256-4	12	Washer-Flat	34	SVB19500-01	4	Shim
12	3296-39	8	Nut-Lock, NI	35	106-0334	1	Idler Tensioner ASM
13	SVB13600	2	V-Belt	35:1:1	33116-040	1	Screw-HH
14	106-0358	2	Pulley Bushing ASM	35:1:2	3253-7	1	Washer-Lock
14:1	322-10	3	Screw-HH	35:2	105-0668	1	Decal-Align
14:2	3253-4	3	Washer-Lock	35:3	105-0669	1	Decal-Angle
15	61-004-0451	3	Key-Square	36	106-0362	1	Bushing-Pulley
16	106-0353	1	Pulley	36:1	325-11	3	Screw-HH
				36:2	3253-7	3	Washer-Lock



Power-Take-Off Shaft and Shield Assembly

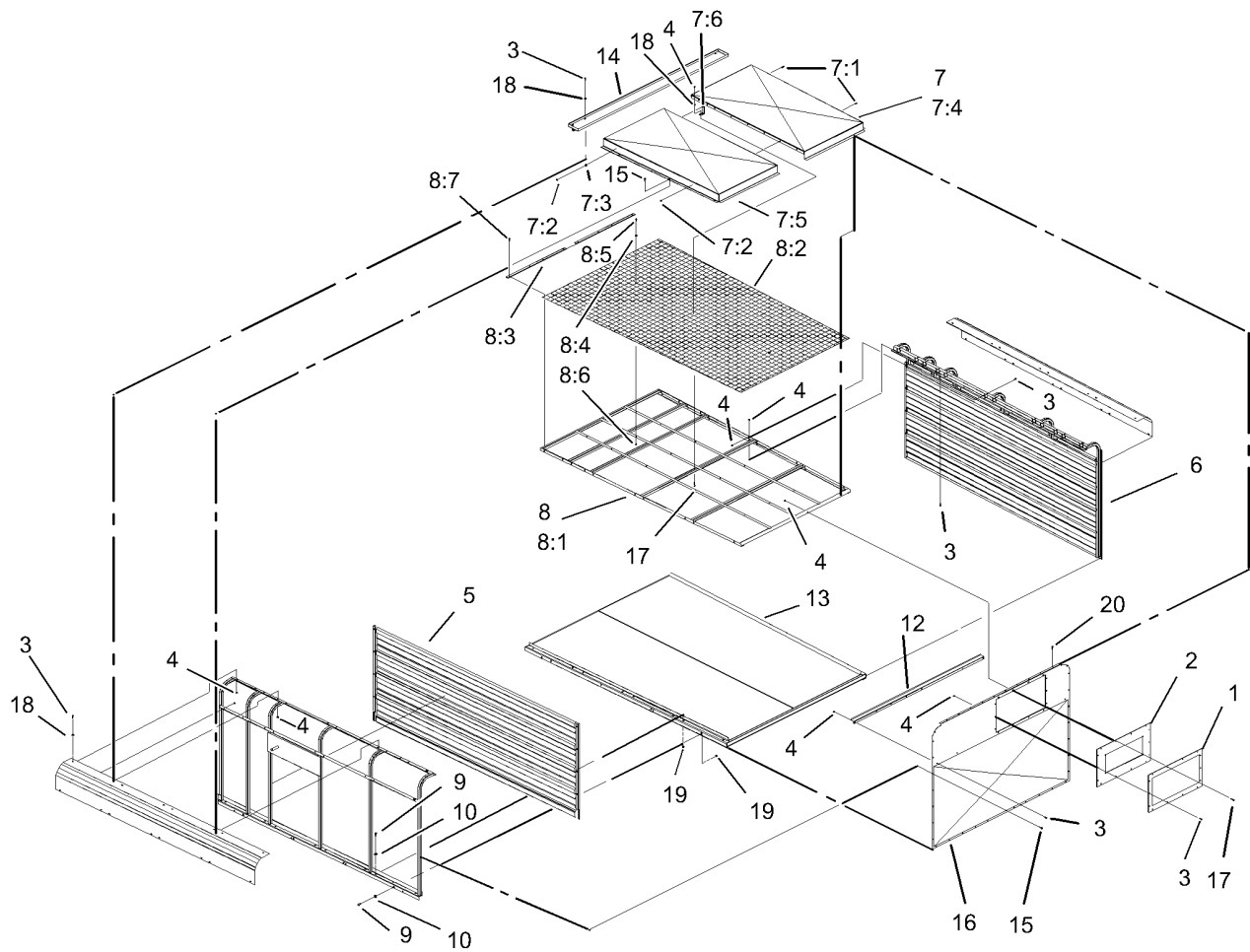
Ref.	Part Number	Qty.	Description	Ref.	Part Number	Qty.	Description
1	106-0193	1	Shield-Drive	13:1	SV216-00-01	1	Transition-Spout
1:3	105-0628	1	Decal-Caution, U-Joint	13:2	SVA10200-01	2	Seal-Dust
1:4	105-4587	1	Decal-Caution, Ce	13:3	3231-2	8	Bolt-CARR
1:5	105-0627	1	Decal-Caution	13:4	3256-24	8	Washer-Flat
1:6	106-0163	1	Decal-Danger, Blowers	13:5	3296-39	8	Nut-Lock, NI
1:7	105-4586	1	Decal-Shield	14	3231-2	6	Bolt-CARR
2	322-5	6	Screw-HH	15	3296-39	6	Nut-Lock, NI
3	3253-4	6	Washer-Lock	16	3256-4	10	Washer-Flat
4	3256-23	6	Washer-Flat	17	3217-7	4	Nut-Hex
5	105-4842-01	1	Guard-Pulley	18	3231-2	4	Bolt-CARR
6	325-6	2	Screw-HH	19	SVA10500	1	Shaft-PTO, Double
7	3256-6	4	Washer-Flat	20	3253-21	4	Washer-Lock
8	3296-23	2	Nut-Lock, NI	21	106-0207	1	Trim-Chute Vac
9	CSP11700	4	Nut-Thin, Tinnerman	24	2412-133	2	R-Clamp
10	105-4843	1	Trim	25	323-5	2	Screw-HH
11	106-0192	1	Chute-Vac	26	3296-39	2	Nut-Lock, NI
11:2	106-0166	1	Decal-Danger, Blower	27	104-7048	1	Cap-Housing
12	SV143-00-01	1	Door-Hose	28	104-7050	1	Tube-Manual
13	SVA14900	1	Spout ASM				



Double Power-Take-Off Shaft Assembly No. SVA10500

Ref.	Part Number	Qty.	Description
1	120-6119	1	Yoke ASM
2	SVA10501	4	Cross And Bearing Kit
3	120-6120	2	Double Yoke
4	84-6290	2	Zerk-Grease
5	SVA10508	1	Yoke-Inboard, Tractor End
6	105-2927	2	Pin-Spring
7	120-6121	1	Tube-Inner
8	SVA10511	1	Tube-Outer
9	SVA10509	1	Yoke-Inboard, Implement End
11	120-6122	1	Guard And Bearing ASM
12	120-6123	1	Guard Cone,3 Rib
13	105-2936	2	Bearing-Ring
14	SVA10502	1	Shield-Outer
15	SVA10503	1	Shield-Inner
16	77-4760	1	Chain-Safety
17	84-6360	14	Screw
18	92-7936	1	Decal-Warning
19	92-7937	1	Decal-Warning
20	84-6370	1	Zerk-Grease
21		1	Support-Bearing ●
22		1	Decal-Lubrication ●
23	SVA1050T	1	Shaft-Double Cv, PTO (Tractor Half)
24	SVA1050I	1	Shaft-Double Cv, PTO (Implement Half)
25	120-6124	1	Collar Kit ASM

● Not serviced separately

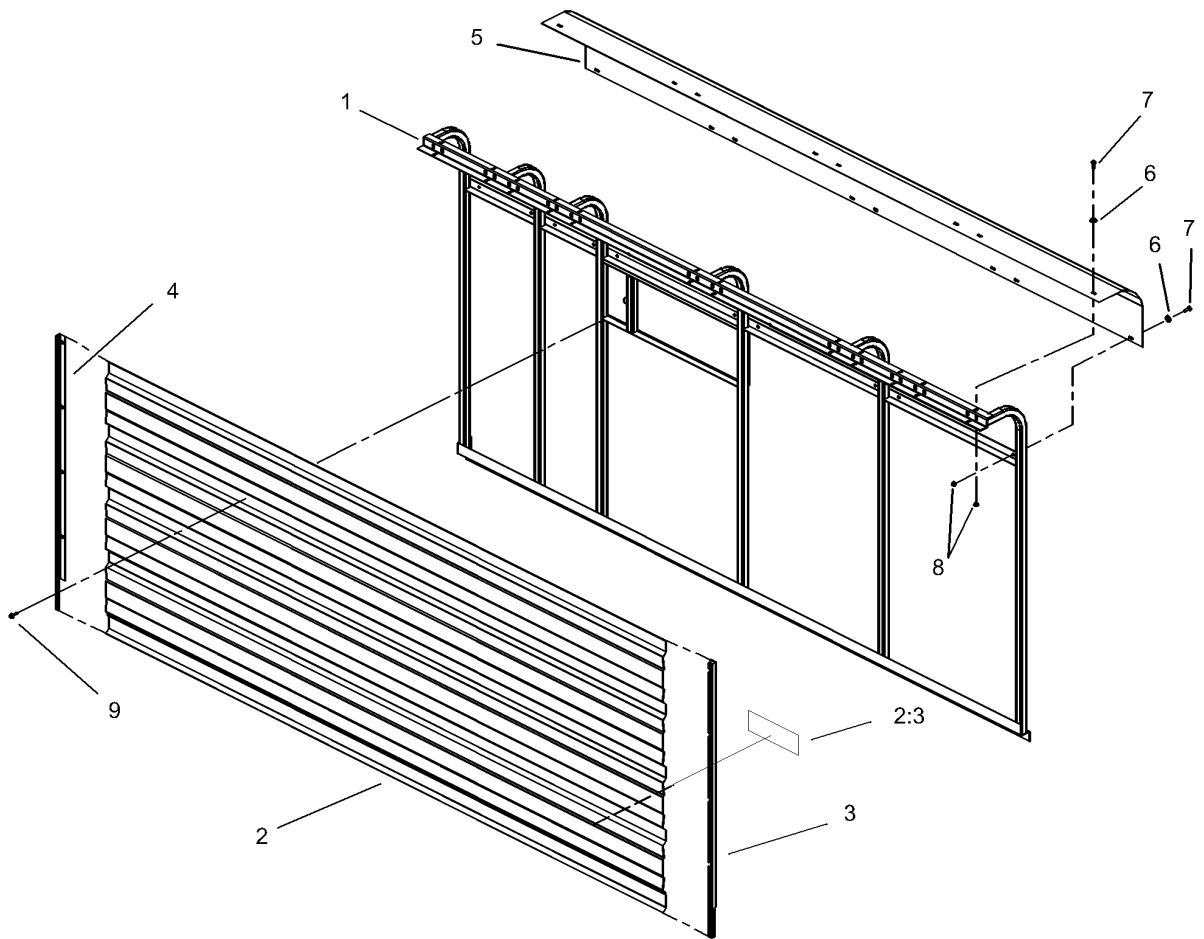


Sidewall Assembly

Ref.	Part Number	Qty.	Description
1	SVA10600-01	1	Plate
2	SVA10400	1	Gasket-Dust
3	321-4	69	Screw-HH
4	3296-42	74	Nut-Lock, NI
5		1	LH Sidewall ASM ●
6		1	RH Sidewall ASM ●
7		1	Dust Cap ASM ●
7:1	321-4	8	Screw-HH
7:2	3296-42	8	Nut-Lock, NI
7:3	3256-2	1	Washer-Flat
7:4	VT309-0L-01	1	Dust-Cover, Left
7:5	VT309-0R-01	1	Dust-Cover, Right
7:6	VT340-00-01	1	Support-Dust Cover
8		1	Roof-Trailer ●
8:1	VT306-00-01	1	Roof Frame ASM
8:2	VT307-00	2	Screen-Roof

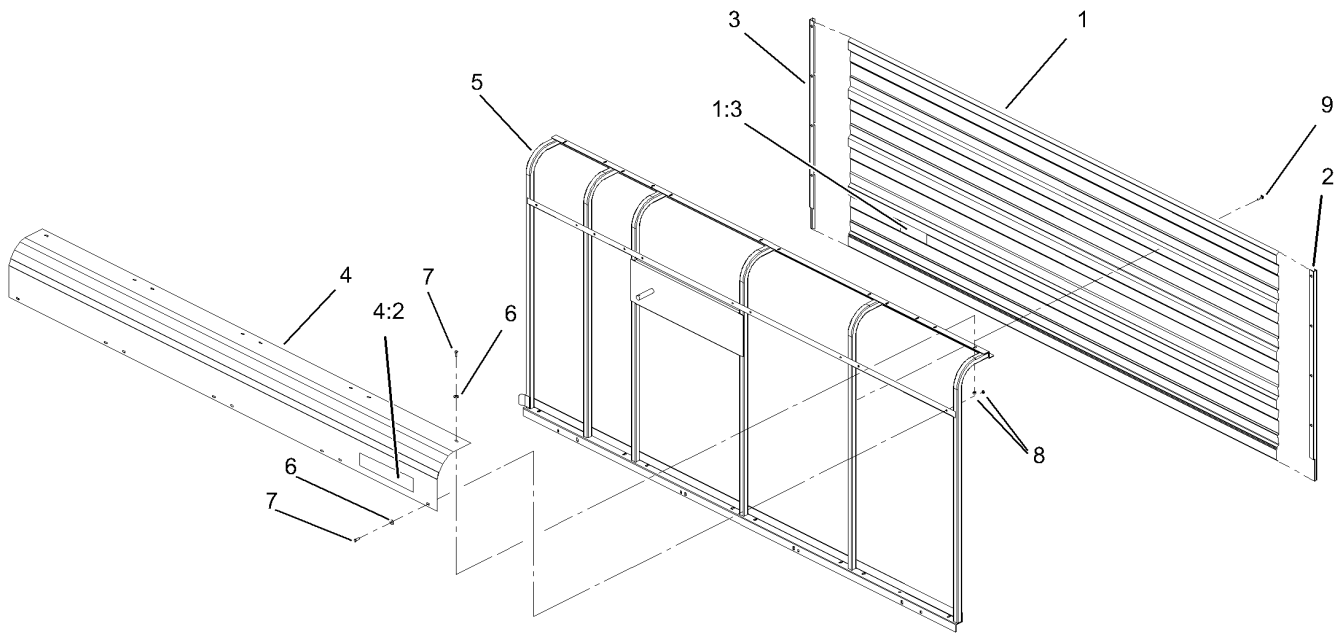
Ref.	Part Number	Qty.	Description
8:3	VT308-00-01	2	Trim-Edge
8:4	3256-22	15	Washer-Flat
8:5	321-4	15	Screw-HH
8:6	3296-42	15	Nut-Lock, NI
8:7	105-0618	8	Screw
9	323-6	24	Screw-HH
10	3256-24	24	Washer-Flat
12	SVA12000-01	1	Brace-Front
13	VT301-00-03	1	Frame-Floor
14	SVA11900-01	1	Hinge Mount ASM
15	105-0618	28	Screw
16	VT301-00-03	1	Frame-Floor
17	321-10	5	Screw-HH
18	3256-22	57	Washer-Flat
19	3290-357	24	Nut-HHF, Whiz
20	105-4848	14	Screw

● Not serviced separately



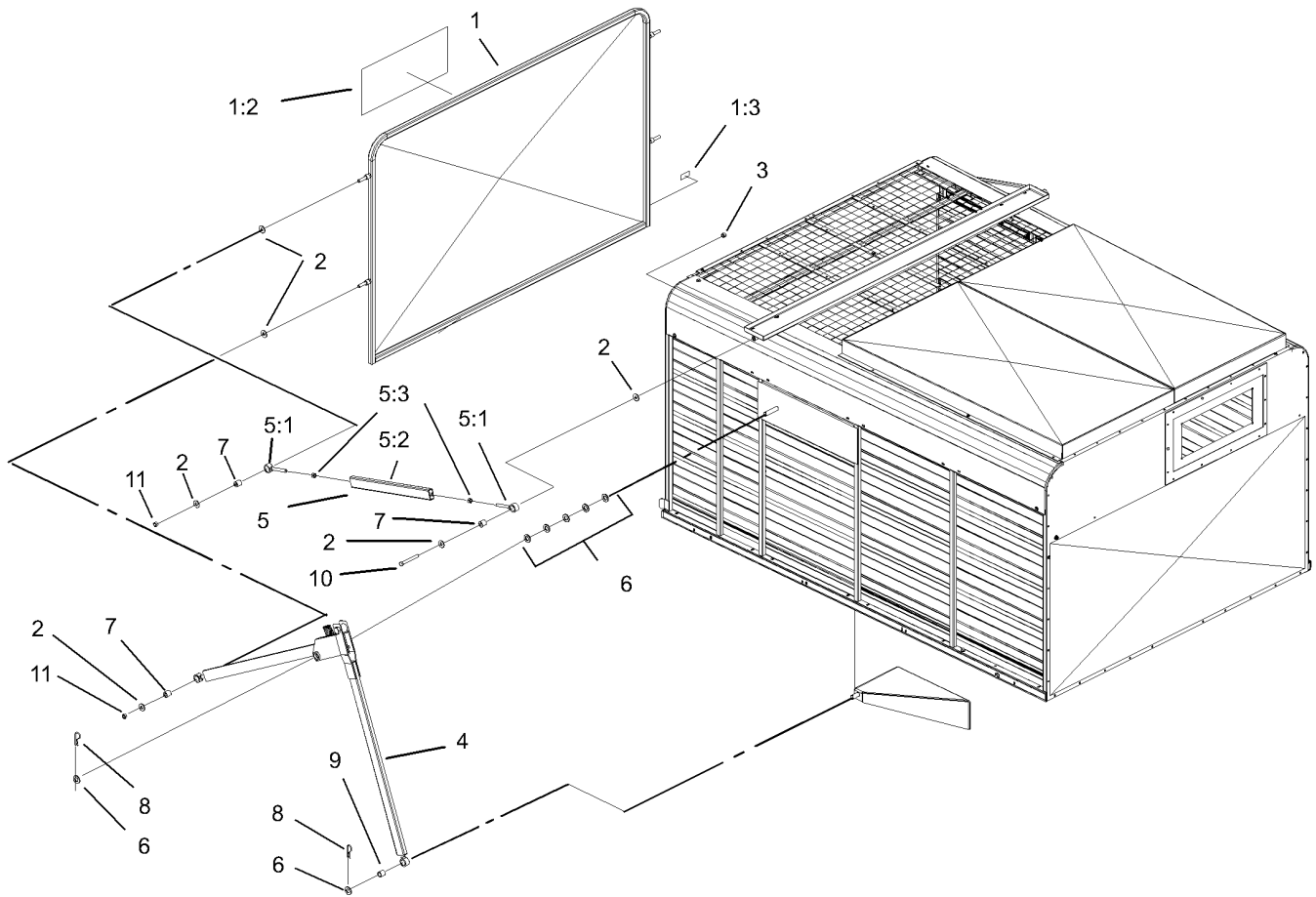
Left Hand Sidewall Assembly

Ref.	Part Number	Qty.	Description
1	VT203-0L-01	1	Left Wall ASM
2	106-0176	1	Sheet-Sidewall, LH
2:3	106-0162	1	Decal-Caution, Stay Clear (Ce)
3	VT130-0L-01	1	Trim-Enclosure, Left
4	106-0175	1	Corner-Roof, LH
5	VT130-0R-01	1	Trim-Enclosure, Right
6	3256-22	8	Washer-Flat
7	321-4	8	Screw-HH
8	3296-42	8	Nut-Lock, NI
9	105-0618	24	Screw



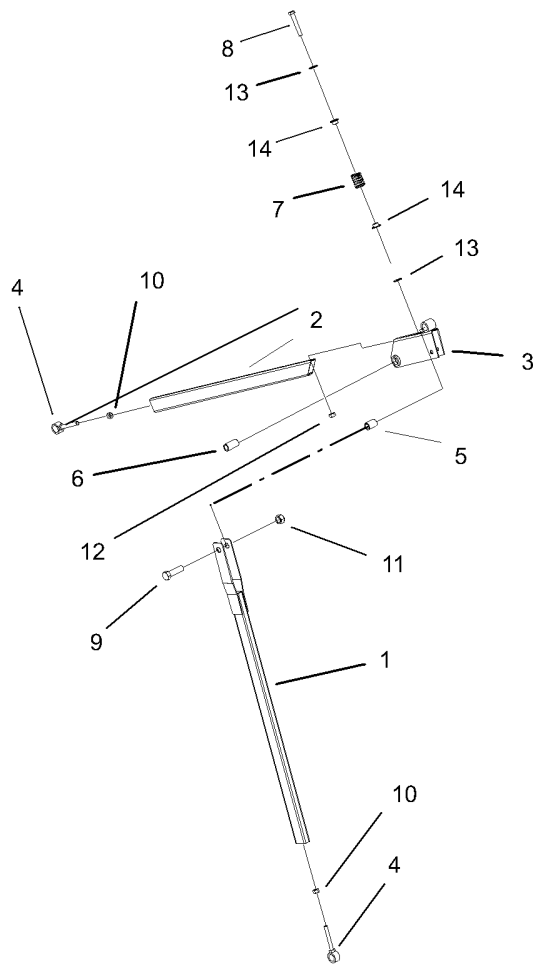
Right Hand Sidewall Assembly

<i>Ref.</i>	<i>Part Number</i>	<i>Qty.</i>	<i>Description</i>
1	106-0174	1	Sheet-Sidewall, RH
1:3	106-0162	1	Decal-Caution, Stay Clear (Ce)
2	VT130-0R-01	1	Trim-Enclosure, Right
3	VT130-0L-01	1	Trim-Enclosure, Left
4	106-0173	1	Corner-Roof, RH
4:2	105-0738	1	Decal-RH
5	VT203-0R-01	1	Right Wall ASM
6	3256-22	8	Washer-Flat
7	321-4	8	Screw-HH
8	3296-42	8	Nut-Lock, NI
9	105-0618	24	Screw



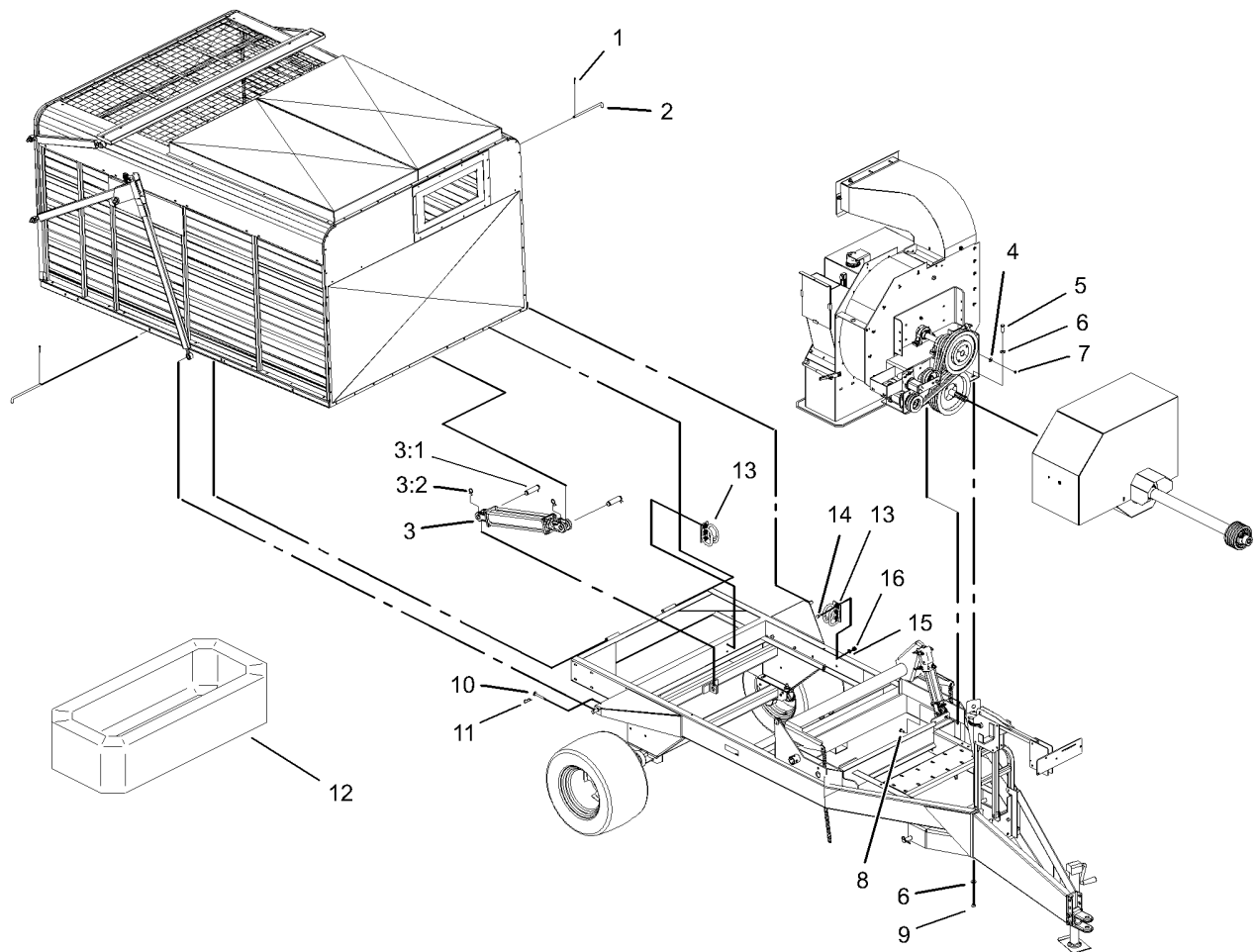
Door Assembly

Ref.	Part Number	Qty.	Description
1	106-0194	1	Door-Trailer
1:2	67-7920	1	Decal
1:3	106-0162	1	Decal-Caution, Stay Clear (Ce)
2	3256-5	12	Washer-Flat
3	3296-23	2	Nut-Lock, NI
4	SVA15100	2	Lower Link Door ASM
5	SVA15000	2	Upper Link Door ASM
5:1	SVA11700-01	1	Link ASM
5:2	SVA12200	2	Pivot-Hinge
5:3	3217-9	2	Nut-HH
6	3256-28	14	Washer-Flat
7	SVA12700	6	Bushing
8	9335064	4	Pin-Cotter, Hair
9	SVA12800	2	Bushing
10	325-17	2	Screw-HH
11	32153-5	4	Nut-Hex



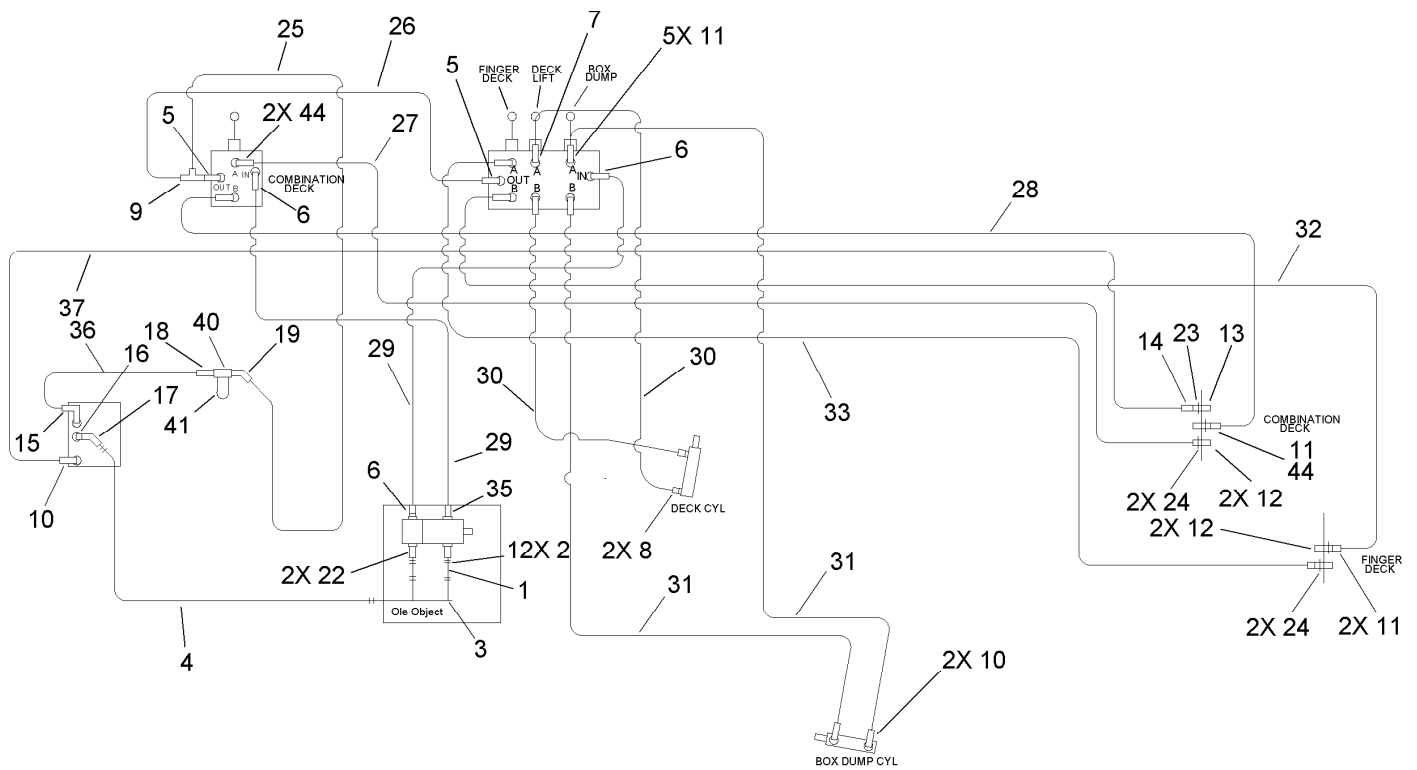
Link-Lower Door Assembly

<i>Ref.</i>	<i>Part Number</i>	<i>Qty.</i>	<i>Description</i>
1	SVA11800-01	1	Pull Arm ASM
2	SVA11600-01	1	Lower Linkage ASM
3	SVA12100-01	1	Mount-Bracket
4	SVA12200	2	Pivot-Hinge
5	SVA12900	1	Bushing
6	SVA13000	1	Bushing
7	GF206-00	1	Spring-Compression
8	325-13	1	Screw-HH
9	328-3	1	Screw-HH
10	3217-9	2	Nut-HH
11	3296-51	1	Nut-Lock, NI
12	3296-23	1	Nut-Lock, NI
13	3256-26	2	Washer-Flat
14	SVA13300	2	Bushing-Flange



Cylinder Assembly

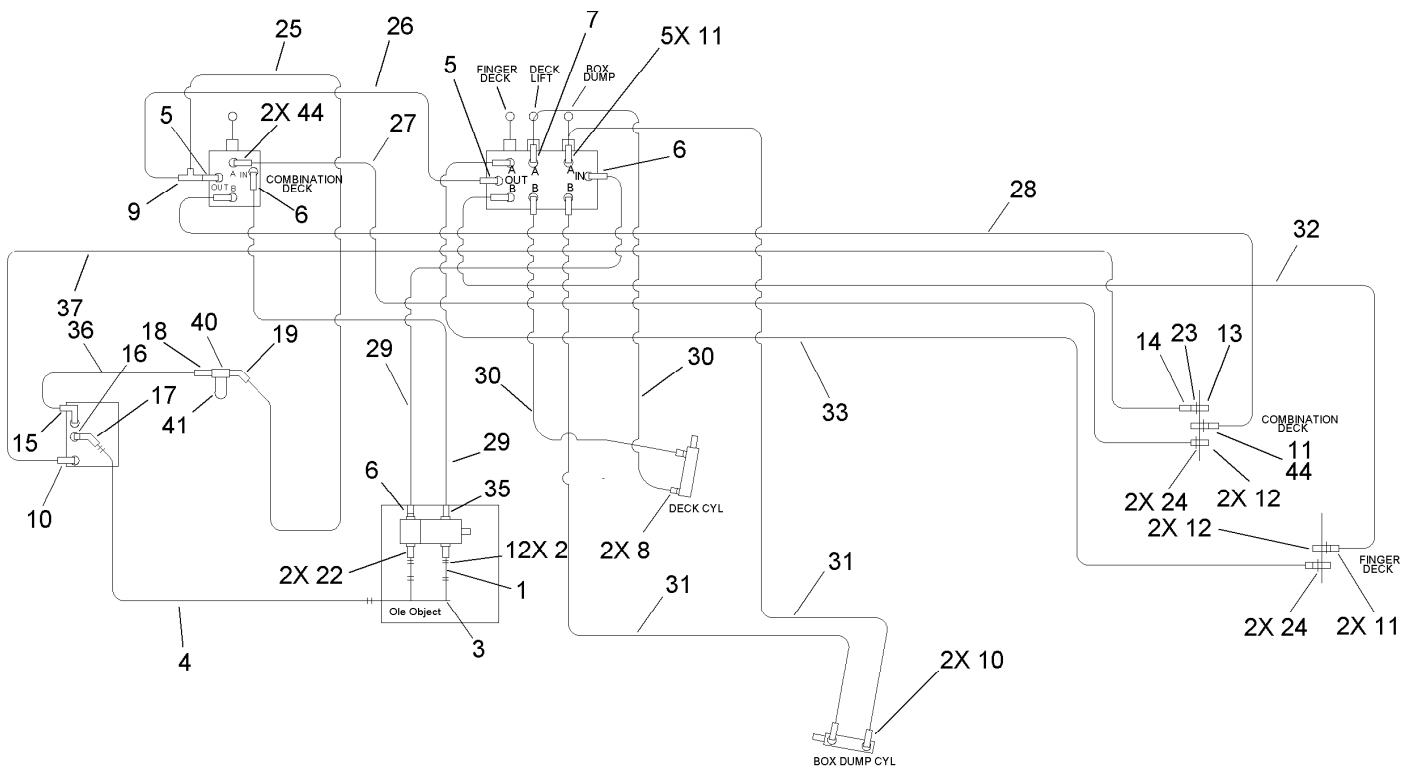
<i>Ref.</i>	<i>Part Number</i>	<i>Qty.</i>	<i>Description</i>
1	3272-22	2	Pin-Cotter
2	PB114-00	2	Pin-Hinge
3	PSP10300	1	Hydraulic Cylinder ASM
3:1	PSP10301	2	Pin
3:2	PSP10302	4	Keeper
4	3256-4	4	Washer-Flat
5	325-6	5	Screw-HH
6	3256-6	10	Washer-Flat
7	3296-39	4	Nut-Lock, NI
8	3231-25	4	Bolt-CARR
9	3296-23	5	Nut-Lock, NI
10	SVA12600	2	Door Pin ASM
11	3290-355	2	Pin-Hair
12	SVP15100	1	Ring-Canvas
13	99-5621	2	Guide-Hose
14	322-5	4	Screw-HH
15	3256-23	4	Washer-Flat
16	3296-29	4	Nut-Lock, NI



Hydraulic Assembly

Ref.	Part Number	Qty.	Description	Ref.	Part Number	Qty.	Description
1	106-0072	2	Hose-Suction	13	63-1220	1	Coupler-Disconnect, Quick
2	2412-34	12	Clamp-Hose	14	340-82	1	Adapter
3	106-0070	1	Tube-Manifold	14:1	237-42	1	O-Ring ●
4	106-0071	1	Hose-Suction	14:2	237-21	1	O-Ring ●
5	340-7	2	Adapter	15	340-108	1	Fitting-HYD
5:1	237-65	1	O-Ring ●	16	SVB14400	1	Strainer-Suction
5:2	237-80	1	O-Ring ●	17	SVB15100	1	Adapter-Cms
6	340-6	3	Fitting-HYD, Straight	18	340-8	1	Adapter
6:1	237-30	1	O-Ring ●	18:1	237-65	1	O-Ring ●
6:2	237-80	1	O-Ring ●	18:2	237-81	1	O-Ring ●
7	106-0073	1	Fitting-Orificed	19	340-156	1	Fitting-HYD
7:1	237-22	1	O-Ring ●	19:1	237-65	1	O-Ring ●
7:2	237-79	1	O-Ring ●	19:2	237-81	1	O-Ring ●
7:99	32151-83	1	Ring-Snap ●	22	353-987	2	Fitting-HYD, 90 DEG (Barbed)
8	340-2	2	Fitting-HYD, Straight	22:1	237-81	1	O-Ring ●
8:1	237-22	1	O-Ring ●	23	32151-83	1	Ring-Snap
8:2	237-42	1	O-Ring ●	24	32120-2	4	Ring-Retaining
9	340-147	1	Fitting-HYD, Tee	25	105-0649	1	Hyd Hose ASM
9:1	237-65	2	O-Ring ●	26	105-0648	1	Hyd Hose ASM
10	340-124	3	Adapter	27	105-0650	1	Hyd Hose ASM
10:1	237-22	1	O-Ring ●	27:3	237-79	1	O-Ring ●
11	340-3	7	Adapter	28	105-0651	1	Hyd Hose ASM
11:1	237-22	1	O-Ring ●	29	105-0653	2	Hyd Hose ASM
11:2	237-79	1	O-Ring ●	30	105-0642	2	Hyd Hose ASM
12	105-4169	4	Coupler-Female				

● Not illustrated



Hydraulic Assembly (continued)

Ref.	Part Number	Qty.	Description
31	105-0652	2	Hyd Hose ASM
32	105-0645	1	Hyd Hose ASM
33	105-0646	1	Hyd Hose ASM
35	340-105	1	Fitting-HYD, 90 DEG
35:1	237-80	1	O-Ring ●
35:2	237-30	1	O-Ring ●
36	105-0638	1	Hyd Hose ASM

Ref.	Part Number	Qty.	Description
37	105-0654	1	Hyd Hose ASM
40	92-5821	1	Head-Filter
41	54-0110	1	Filter-Oil, Transmission
42	SVA13800	10	Tiewire ●
44		3	Fitting-HYD, Sraight
44:1	237-30	1	O-Ring ●
44:2	237-79	1	O-Ring ●

● Not illustrated

Notes:

Notes:



Count on it.