



Jack-Stand Kit

Groundsmaster® 7200 Series Traction Unit

Model No. 30483

Installation Instructions

Safety

⚠ WARNING

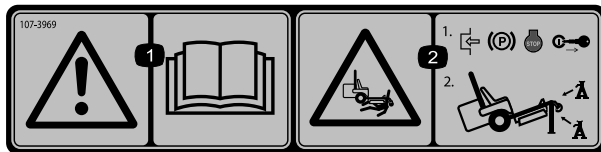
CALIFORNIA Proposition 65 Warning

This product contains a chemical or chemicals known to the State of California to cause cancer, birth defects, or reproductive harm.

Safety and Instructional Decals



Safety decals and instructions are easily visible to the operator and are located near any area of potential danger. Replace any decal that is damaged or lost.



107-3969

1. Warning—read the *Operator's Manual*.
2. Crushing hazard, mower—1) Engage the parking brake, stop the engine, and remove the ignition key; 2) Properly jack the machine before working under the machine.

Loose Parts

Use the chart below to verify that all parts have been shipped.

Description	Qty.	Use
Jack stand w/jack pin	1	Install the jack stand
Jack mount	1	
Bolt, 3/8 x 3-1/4 inch	2	
Flat washer, .406 x .813 inch	2	
Flange nut, 3/8 inch	2	



Installing the Jack Stand

1. Secure the jack mount to the castor arm with 2 bolts (3/8 x 3-1/4 inch), flat washers .406 x .813 inch and flange nuts (3/8 inch). Position the components as shown in [Figure 1](#). Make sure the jack mount is bolted to the straight section of the castor arm.

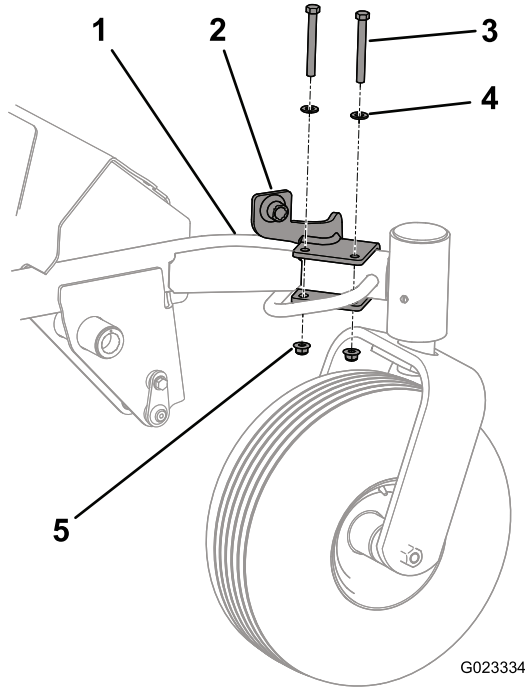


Figure 1

- | | |
|---------------------------|----------------------------------|
| 1. Castor arm | 4. Flat washer, .406 x .813 inch |
| 2. Jack mount | 5. Flange nut, 3/8 inch |
| 3. Bolt, 3/8 x 3-1/4 inch | |

2. Insert the jack tube onto the jack mount tube, align the mounting holes and secure with the jack pin ([Figure 2](#)).

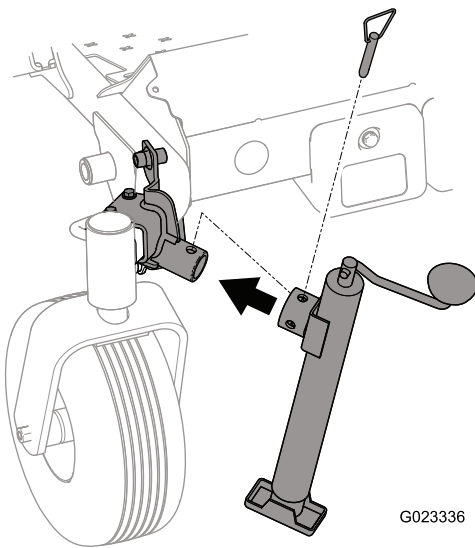


Figure 2

3. Crank the jack handle to raise or lower the jack to the desired height.
4. To store the jack:
 - Align the holes in the jack tube with the hole in the storage tube on top of the jack mount ([Figure 3](#)).

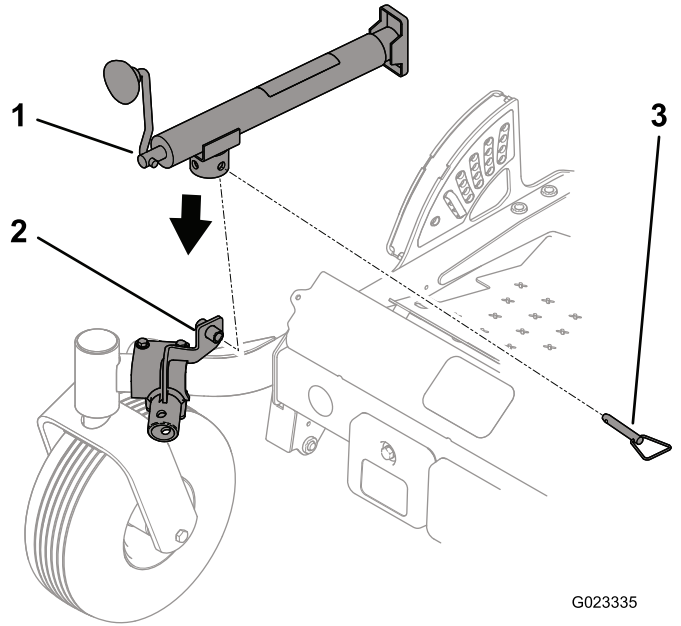


Figure 3

- | | |
|----------------------|-------------|
| 1. Jack | 3. Jack pin |
| 2. Jack storage tube | |

- Secure jack to the storage tube with the jack pin ([Figure 3](#)).