



Finishing Kit

Foam Marker for Multi Pro 1750 Turf Sprayer

Model No. 125-8120

Installation Instructions

Note: The Foam Marker Kit is required for the installation of this product. Contact your Authorized Toro Dealer for more information.

⚠ WARNING

CALIFORNIA Proposition 65 Warning

This product contains a chemical or chemicals known to the State of California to cause cancer, birth defects, or reproductive harm.

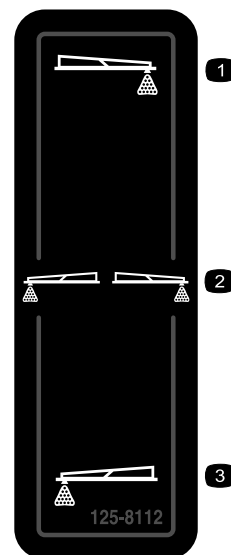
Safety

Note: Determine the left and right sides of the machine from the normal operating position.

Safety and Instructional Decals



Safety decals and instructions are easily visible to the operator and are located near any area of potential danger. Replace any decal that is damaged or lost.



125-8112

1. Right boom
2. Both booms
3. Left boom

Installation

Loose Parts

Use the chart below to verify that all parts have been shipped.

Procedure	Description	Qty.	Use
1	Foam-marker bracket	1	Install the finishing kit bracket.
	Carriage bolt	1	
	U-bolt	1	
	Flange nuts (3/8 inch)	3	
	Spacer	1	
	R-clamp	1	



Procedure	Description	Qty.	Use
2	Foam marker (sold separately)	1	Attach the foam marker (sold separately).
	Bolts	4	
	Nuts (1/4 inch)	4	
3	Wiring harness	1	Install the switches and route the wire harness.
	Switch bracket	1	
	Rocker switch	1	
	Paddle switch	1	
	Bolts	4	

1

Installing the Finishing-kit Bracket

Parts needed for this procedure:

1	Foam-marker bracket
1	Carriage bolt
1	U-bolt
3	Flange nuts (3/8 inch)
1	Spacer
1	R-clamp

Procedure

- Loosen the bolt on the top of the strap (Figure 1).

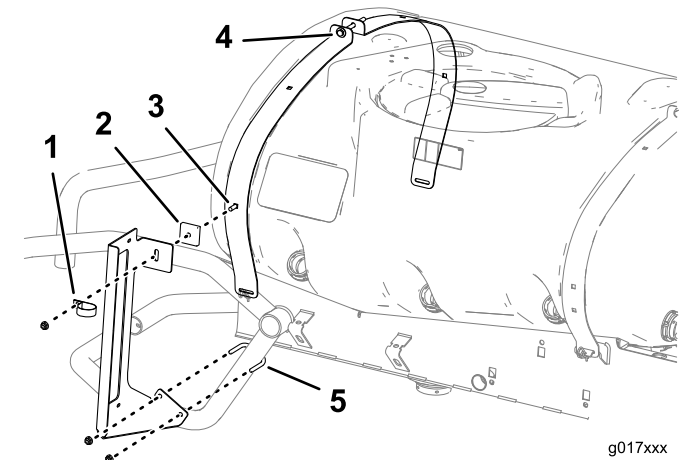


Figure 1

- | | |
|------------------|---------------|
| 1. R-Clamp | 4. Strap bolt |
| 2. Spacer | 5. U-Bolt |
| 3. Carriage bolt | |

- Place the R-clamp onto the bolt and secure the bolt with a flange nut (3/8 inch).
- Place the U-bolt onto the machine as shown in Figure 1.
- Place the bracket onto the U-bolt and secure with the 2 flange nuts (3/8 inch).

2

Attaching the Foam Marker (Sold Separately)

Parts needed for this procedure:

1	Foam marker (sold separately)
4	Bolts
4	Nuts (1/4 inch)

Procedure

Secure the foam marker to the bracket using the 4 bolts and 4 nuts as shown in Figure 2.

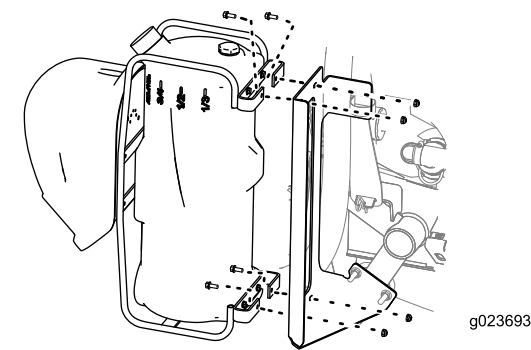


Figure 2

- Place the carriage bolt through the strap of the sprayer tank belt (Figure 1).
- Slide the spacer onto the bolt and place the bracket onto the bolt as shown in Figure 1.

3

Installing the Switches and Routing the Wiring Harness

Parts needed for this procedure:

	Wiring harness
1	Switch bracket
1	Rocker switch
1	Paddle switch
4	Bolts

Installing the Switches

1. Install the paddle switch onto the switch bracket.
2. Remove the steering wheel cover plate, remove the steering wheel hardware, and pull the steering wheel off the column (Figure 3).

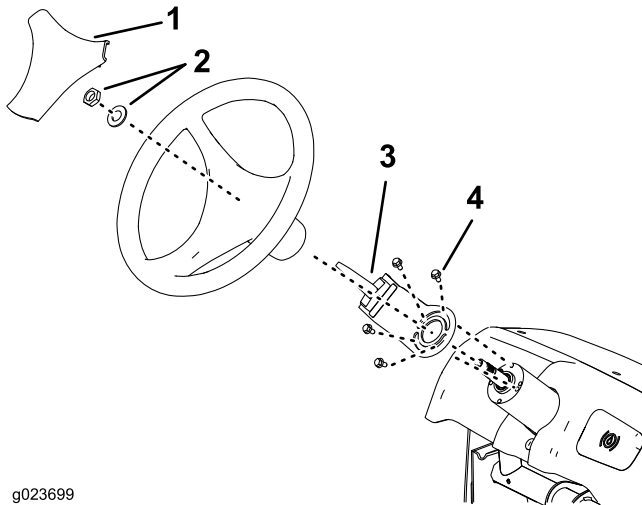


Figure 3

1. Steering wheel cover plate
2. Steering wheel hardware
3. Paddle switch on the switch bracket
4. Bolts

3. Slide the switch bracket onto the steering wheel column, and secure the bracket with the 4 bolts (Figure 3).
4. Install the steering wheel.
5. Remove the 4 bolts on the switch panel, and lift up the cover plate.
6. Install the on/off switch as shown in Figure 4.

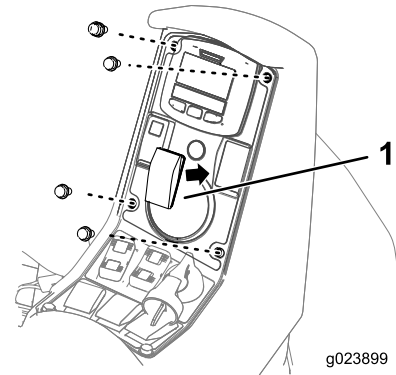


Figure 4

7. Secure the cover plate.

Routing the Wiring Harness

Note: Lift the seat to route the wire harness.

Route the wire harness as shown in Figure 5 and Figure 6.

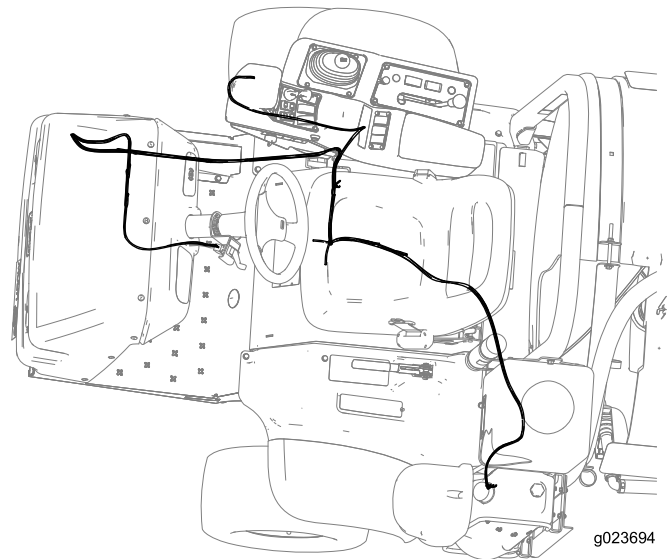


Figure 5

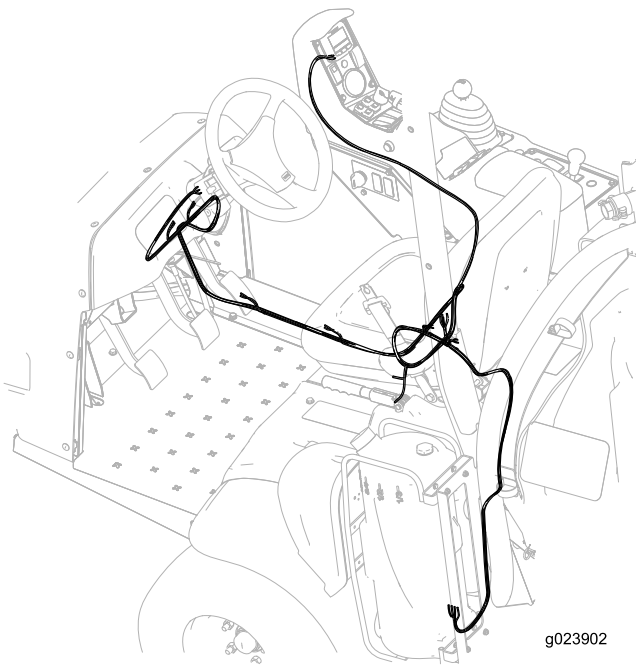


Figure 6

Operation

Using the Controls

Foam paddle switch—activates the compressor, generating a flow of foam and air to the right or left boom section (Figure 3).

Foam on/off switch—activates the compressor, generating a flow of foam to both of the boom sections simultaneously (Figure 4).

Indicator markings—located on the side of the tank; they indicate the solution level in the tank.

Foam regulator adjustment valve—controls the consistency of the foam solution. Adjusting the valve controls the amount of soap solution delivered to the foam nozzles. Increasing the flow results in larger, more frequent foam drops; decreasing the flow results in smaller, less frequent foam drops (Figure 7).

Note: A watery marker consistency may be helpful on windy days.

Pressure relief valve—pull the red tab on the tank cap outward to relieve pressure in the tank (Figure 7).

Filling the Tank and Adjusting the Foam Density

Important: Flush the system with clean water after each use, especially after using hard water. Do not apply lubricating oils, grease, or other petroleum products to the compressor motor assembly.

1. Ensure that both the left and right boom switches located on the console are in the Off position.
2. Pull out on the red pressure relief tab, and remove the black cap from the tank.
3. Pour the proper amount water into the tank, and then add foam concentrate through the opening in the top of the tank according to the manufacturer's instructions.

Important: Extreme pH levels (hardness or softness) of the water will affect the amount of foam concentrate needed.

4. Install the cap on the tank and tighten it by hand.
5. For the initial operation, open the foam density adjustment valve 1/8 to 1/4 turn ().

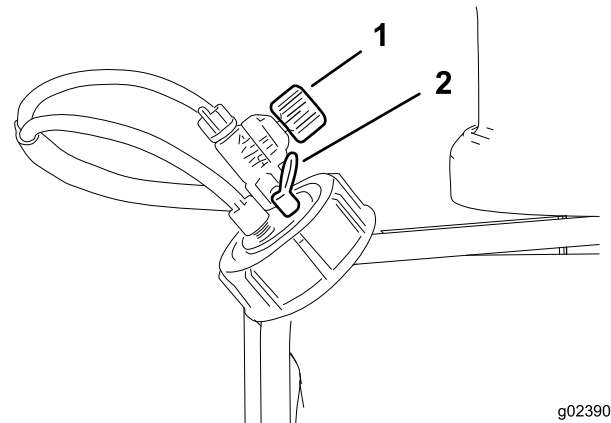


Figure 7

1. Foam regulator adjustment valve
2. Pressure relief valve

6. Start operating the marking system and make a test pattern on the ground.

Note: When you first start the marking system, allow 1 to 2 minutes for the foam to flow through the line.

7. Adjust the foam density adjustment valve to obtain the desired consistency and spray as normal.

Note: If you leave the foam in the line for more than 2 hours, it may become watery. Before operating after a break of 2 or more hours, run the machine for 1 to 2 minutes to remove the excess water.

If the foam in the machine is very watery, do the following:

- A. Close the foam density adjustment valve completely.
- B. Operate for 2 minutes.
- C. Wait 1 minute and then check the consistency of the foam.
- D. Adjust the foam to achieve the desired consistency.