

# Finish Cut Kit RD60-72

## Lazer Z® Rear Discharge Models

### Kit Nos. 116-8547 and 116-8548

## Installation Instructions

For Serial Nos. 313,000,000 & Higher

### ⚠ WARNING

#### CALIFORNIA Proposition 65 Warning

This product contains a chemical or chemicals known to the State of California to cause cancer, birth defects, or reproductive harm.

## Safety Alert Symbol

This Safety Alert Symbol (Figure 1) is used both in this instruction sheet and on the machine to identify important safety messages which must be followed to avoid accidents

This symbol means: **ATTENTION! BECOME ALERT! YOUR SAFETY IS INVOLVED!**



**Figure 1**  
Safety Alert Symbol

The safety alert symbol appears above information which alerts you to unsafe actions or situations and will be followed by the word **DANGER**, **WARNING**, or **CAUTION**.

**DANGER:** White lettering / Red background. Indicates an imminently hazardous situation which, if not avoided, **Will** result in death or serious injury.

**WARNING:** Black lettering / Orange background. Indicates a potentially hazardous situation which, if not avoided, **Could** result in death or serious injury.

**CAUTION:** Black lettering / Yellow background. Indicates a potentially hazardous situation which, if not avoided, **May** result in minor or moderate injury.

This manual uses two other words to highlight information. **Important** calls attention to special mechanical information and **Note** emphasizes general information worthy of special attention.

### ⚠ WARNING

While maintenance or adjustments are being made, someone could start the engine. Accidental starting of the engine could seriously injure you or other bystanders.

Remove the key from the ignition switch, engage parking brake, and pull the wire(s) off the spark plug(s) before you do any maintenance. Also push the wire(s) aside so it does not accidentally contact the spark plug(s).

**Note:** Determine the left and right sides of the machine from the normal operating position.

**Note:** Park the unit on a level surface. Make sure all moving parts have stopped, parking brake is engaged, the key has been removed, and the spark plug wire has been disconnected. Allow unit to cool before starting these instructions.

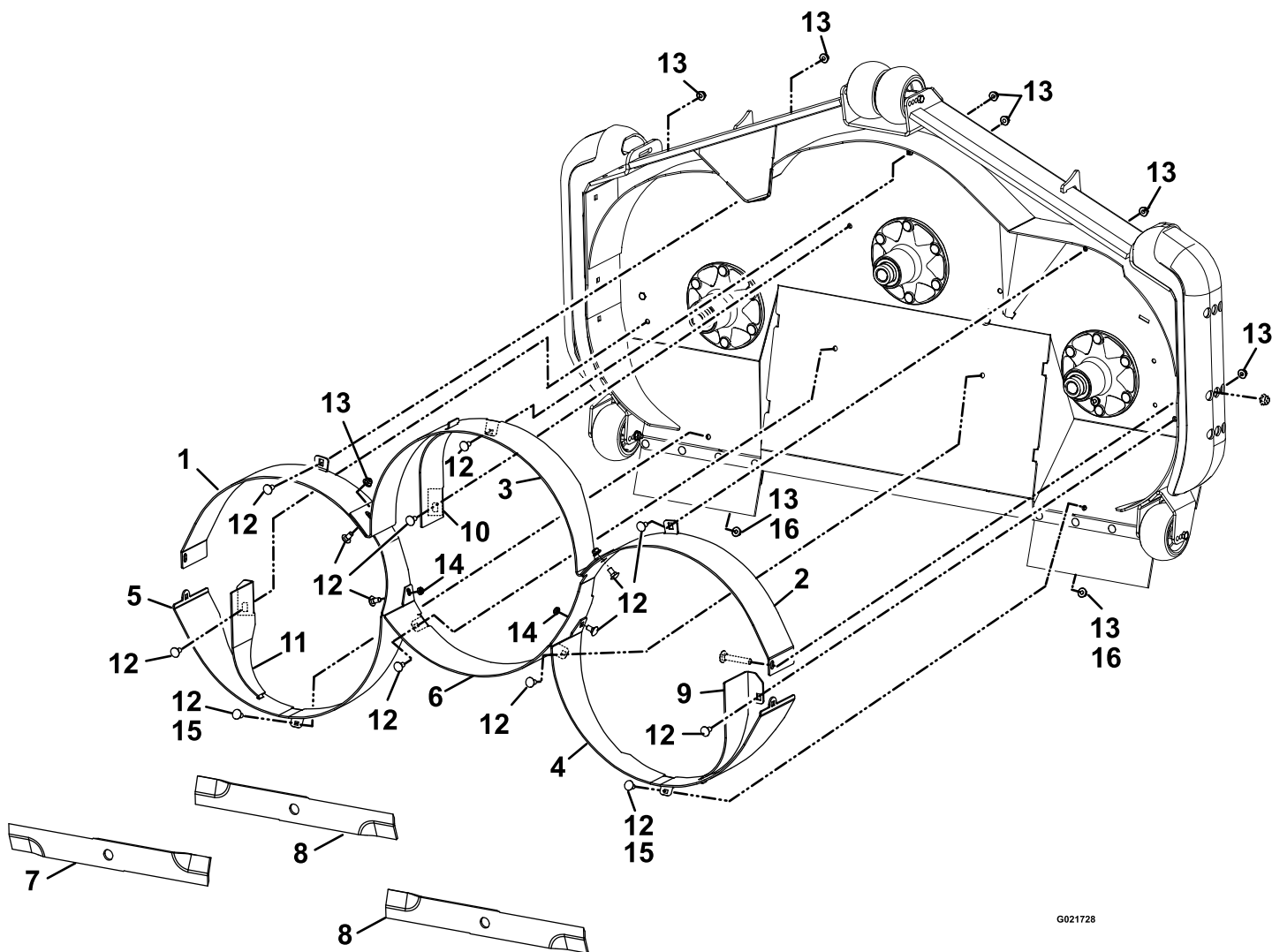


# Loose Parts

Use the chart below to verify that all parts have been shipped.

| Item | Part No.    | Description               | Qty |
|------|-------------|---------------------------|-----|
| 1    | 116-8334-03 | Baffle-Frt RH 60          | 1   |
|      | 116-8386-03 | Baffle-Frt RH 72          | 1   |
| 2    | 116-8333-03 | Baffle-Frt LH 60          | 1   |
|      | 116-8387-03 | Baffle-Frt LH 72          | 1   |
| 3    | 116-8336-03 | Baffle-Frt CTR 60         | 1   |
|      | 116-8389-03 | Baffle-Frt CTR 72         | 1   |
| 4    | 116-8337-03 | Baffle-Rear LH 60         | 1   |
|      | 116-8391-03 | Baffle-Rear LH 72         | 1   |
| 5    | 116-8338-03 | Baffle-Rear RH 60         | 1   |
|      | 116-8390-03 | Baffle-Rear RH 72         | 1   |
| 6    | 116-8339-03 | Baffle-Rear CTR 60        | 1   |
|      | 116-8392-03 | Baffle-Rear CTR 72        | 1   |
| 7    | 116-8196    | Blade, Low Lift 20.5 - 60 | 1   |
|      | 116-8502    | Blade, Low Lift 24.5 - 72 | 1   |

| Item | Part No.    | Description                   | Qty |
|------|-------------|-------------------------------|-----|
| 8    | 103-6388    | Blade, Low Lift 20.5 - 60     | 2   |
|      | 103-6389    | Blade, Low Lift 24.5 - 72     | 2   |
| 9    | 116-8343-03 | Baffle-Kicker LH 60           | 1   |
|      | 116-8511-03 | Baffle-Kicker LH 72           | 1   |
| 10   | 116-8344-03 | Baffle-Kicker CTR             | 1   |
| 11   | 116-8342-03 | Baffle-Kicker RH 60           | 1   |
|      | 116-8510-03 | Baffle-Kicker RH 72           | 1   |
| 12   | 3231-12     | Bolt-Carriage 3/8-16 x 7/8 60 | 14  |
|      | 3231-12     | Bolt-Carriage 3/8-16 x 7/8 72 | 12  |
| 13   | 104-8301    | Nut, Flange nyloc 3/8-16 60   | 12  |
|      | 104-8301    | Nut, Flange nyloc 3/8-16 72   | 10  |
| 14   | 3296-59     | Nut, Nyloc 3/8-16 thin        | 2   |
| 15   | 3230-2      | Bolt, Carriage 5/16-18 x 1 72 | 2   |
| 16   | 104-8300    | Nut, Flange nyloc 5/16-18 72  | 2   |



G021728

Figure 2

# Installation Instructions

**Important:** For Serial Numbers 313,000,000 and Higher, multiple accessories added to a base unit can change the stability of the machine. Read the unit operator's manual to determine if counterbalance weights are necessary for the accessories installed on the unit.

1. Make sure all moving parts have stopped, parking brake is engaged, and the key has been removed.
2. Raise the front of the machine and support with jack stands.

## ⚠ CAUTION

**Raising the mower deck for service or maintenance relying solely on mechanical or hydraulic jacks could be dangerous. The mechanical or hydraulic jacks may not be enough support or may malfunction allowing the unit to fall, which could cause injury.**

**Do Not rely solely on mechanical or hydraulic jacks for support. Use adequate jack stands or equivalent support.**

3. Remove the blades; retain for removal of the finish cut kit.
4. If the mower has been used, scrape underside of mower deck clean.
5. Remove the hardware that plugs the exposed mounting holes in the deck.
  - On 60 inch decks, remove the six 5/16-18 x 3/4 inch hex socket screws and flanged nyloc nuts plugging the exposed mounting holes in the deck. Retain for future use (see Figure 3).

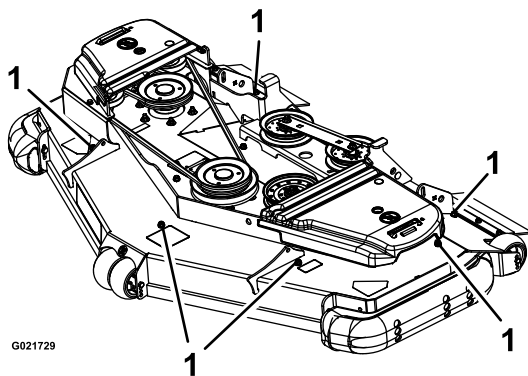


Figure 3

1. Remove and retain hardware

- On 72 inch decks, remove the four 5/16-18 x 3/4 inch hex socket screws and flanged nyloc nuts plugging the exposed mounting holes in the deck. Also remove the inboard tire flap fastener on each side. Retain for future use (Figure 4).

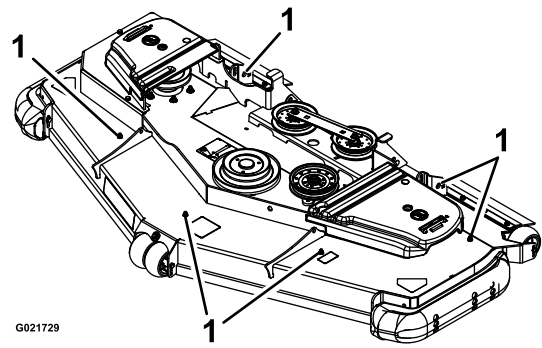


Figure 4

1. Remove and retain hardware

**Note:** Refer to Figure 1 for steps 6 through 12.

6. Remove and retain the four 3/8-16 x 2 1/4 inch carriage bolts and flanged nyloc nuts within the cutting chamber that attach the side bumpers to the deck sides.
7. Loosely install the outer forward baffles first (items 1 and 2). Re-use part of the hardware removed in step 6, along with one 3/8-16 x 7/8 inch carriage bolt and flanged nyloc nut per baffle.
8. Loosely install the center forward baffle (item 3) with three 3/8-16 x 7/8 inch carriage bolts and nyloc nuts.
9. Loosely install the outer rear baffles (items 4 and 5). Re-use the remaining hardware removed in step 6, along with one 3/8-16 x 7/8 inch carriage bolt and flanged nyloc nut per baffle. Note that the front baffle installs between the rear baffle tabs.
10. Loosely install the rear center baffle (item 6) using two 3/8-16 x 7/8 inch carriage bolts and flanged nyloc nuts. This baffle installs between the front baffle flanges as shown in Figure 5.

**Note:** 72 inch units will use one 5/16-18 x 1 inch carriage bolt and nyloc nut in the rear of each outer baffle.

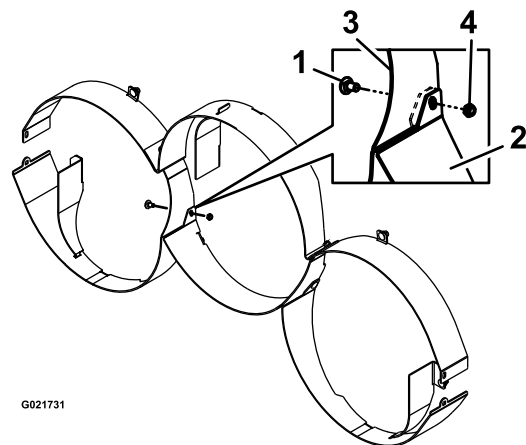
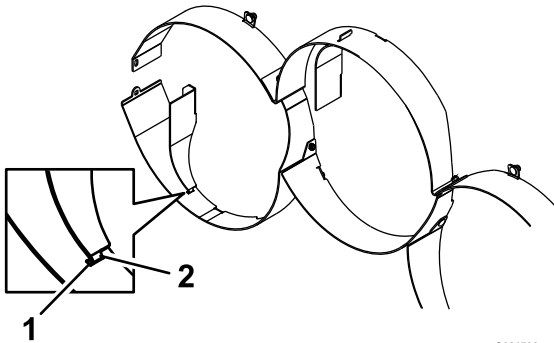


Figure 5

- |                                    |                        |
|------------------------------------|------------------------|
| 1. 3/8-16 x 7/8 inch carriage bolt | 3. Front baffle flange |
| 2. Rear center baffle              | 4. Flanged nyloc nut   |

11. Where the front outer baffle, rear outer baffle, and rear center baffle come together, install two 3/8-16 x 7/8 inch carriage bolts and thin nyloc nuts (see Figure 5).
  12. Tighten all hardware.
- Note:** When tightening the side bumper hardware, Do Not exceed 20 ft-lb (27 N-m).
13. Using one 3/8-16 x 7/8 inch carriage bolt and flanged nyloc nut, install the correct kicker baffle per chamber as shown in Figure 1. The hooked end of each kicker baffle attaches to the slot in the chamber baffle as shown in Figure 6.



**Figure 6**

1. Slot
2. Hooked end

14. Install the black reverse rotation blade, supplied in the kit, onto the right hand spindle.
15. The two red blades, supplied in the kit, can be installed on either the center or left hand spindle.
16. Torque the blade bolts to 55-60 ft lb (75-81 N-m).

**Note:** Carefully and slowly rotate each blade 360 degrees by hand to make sure there is clearance between the blades and baffles. Adjust baffles slightly if interference is found.

## **⚠ WARNING**

**Incorrect installation of the blade or components used to retain the blade can be dangerous. Failure to use all original components and assembled as shown could allow a blade or blade component to be thrown out from under the deck resulting in serious personal injury or death.**

**Always install the original Exmark blades and blade retaining hardware as shown in the Operator's manual.**

**Note:** Refer to the mower operator's manual for blade maintenance.

17. Carefully remove the jack stands and lower the machine to the ground.

## **Converting Back to Rear Discharge**

1. Stop engine and wait for all moving parts to stop, engage parking brake, remove key, and disconnect the negative battery cable.
2. Remove finish cut baffles and kicker baffles and retain all hardware.
3. Replace the finish cut blades with standard blades.
4. Install 5/16-18 x 3/4 inch hex socket screws and flanged nyloc nuts in the holes on top of the deck with the bolt head underneath. All open holes not covered by belt shields or the frame must be plugged to prevent sand or other small objects from being thrown up through the deck.