



GreensPro™ 1200 Greens Roller

Model No. 44907—Serial No. 313000001 and Up

Form No. 3376-153 Rev B

Setup Instructions

Loose Parts

Use the chart below to verify that all parts have been shipped.

Procedure	Description	Qty.	Use
1	Lift arm catch assembly	1	Install the lift arm catch assembly
2	Lift arm assembly	1	Install the lift arm assembly
3	Transport wheels	2	Install the transport wheels
4	Rear tow bar assembly	1	Install the rear tow bar assembly
5	Lift bar	2	Install the lift bar
6	Steering wheel	1	Install the steering wheel
	Steering shaft cover	1	
	Steering wheel cap	1	
7	Seat	1	Install the seat
8	No parts required	—	Remove the machine from the pallet

Keep the machine on the pallet while installing the components.



Installing the Lift Arm Catch Assembly

Parts needed for this procedure:

1	Lift arm catch assembly
---	-------------------------

Procedure

1. Hook the spring onto the catch (Figure 1).

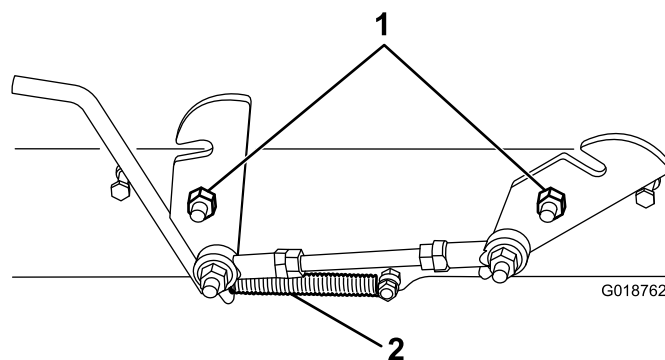


Figure 1

1. Bolts
2. Spring

2. Place the catch onto the bolts.
3. Tighten the nuts so that the catch mechanism does not move, then back the nut off on each catch to allow the catch mechanism to move freely.



2

Installing the Lift Arm Assembly

Parts needed for this procedure:

1	Lift arm assembly
---	-------------------

Procedure

1. Remove the seat pan bolt and flip the seat pan up.
 2. Remove the top half of the clamps on the base then feed the lift arm assembly under the seat support.
- Note:** Ensure that the position of the lift arm is centered between the flanges welded to the shaft as they fit inside the lift arm clamps.
3. Install the top half of the clamps and secure them with the previously removed bolts. Do not tighten the bolts completely until the gas lift ram has been installed (Figure 2).

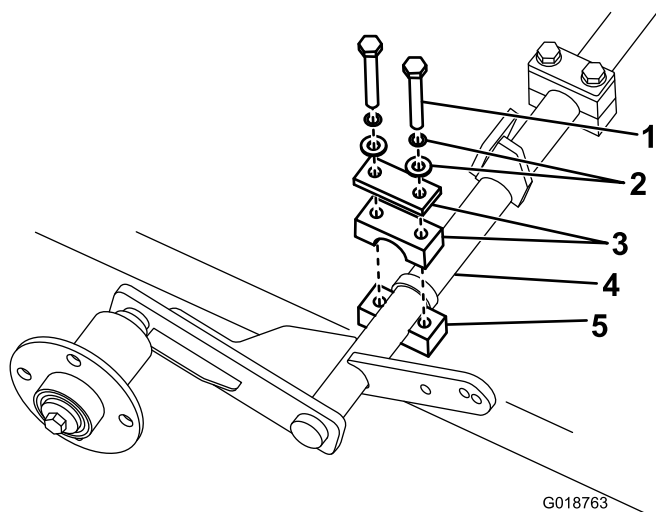


Figure 2

- | | |
|---------------------|----------------------|
| 1. Bolts | 4. Lift arm assembly |
| 2. Nuts and washers | 5. Clamp |
| 3. Clamps | |

4. Remove the nuts and washers on the end of the gas ram that is not assembled to the base.
5. Place the shoulder end through the lift arm top hole.

Note: The bolts in the clamps holding the lift arm in place may need to be loosened to easily locate the gas ram in the arm (Figure 3).

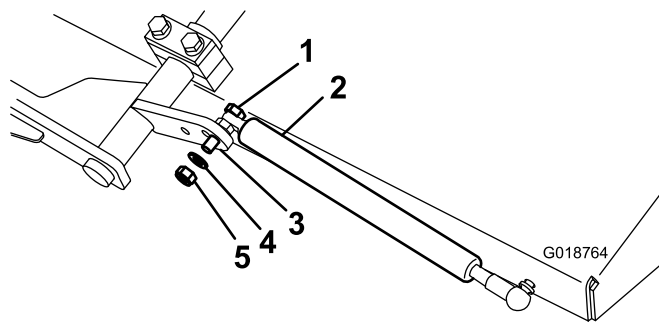


Figure 3

- | | |
|----------------------------|-----------|
| 1. Shoulder end of gas ram | 4. Washer |
| 2. Gas ram | 5. Nut |
| 3. Lift arm | |
6. Install the washers and nut on the other side of the gas ram.
 7. Tighten the nut. Torque the nut to 47-57 N-m (34-42 ft-lb).
 8. Torque the bolts on the lift arm assembly to 47.5 N-m (35 ft-lb).

3

Installing the Transport Wheels

Parts needed for this procedure:

2	Transport wheels
---	------------------

Procedure

1. Place the lift arm in the upright position to raise the wheel hubs.
2. Install the transport wheels to the machine with the lug nuts. Hand tighten the lug nuts. Do not over tighten.

Note: The lug nuts will be torqued to 108 N-m (80 ft-lb) later after the machine is lowered onto its wheels.

3. Adjust the tire pressure to 0.65 bar (10 psi).

4

Installing the Rear Tow Bar Assembly

Parts needed for this procedure:

1	Rear tow bar assembly
---	-----------------------

Procedure

1. Remove the transmission cover to allow access to the nuts for the tow bar.
2. Remove the outer half of the clamps on the back of the machine.
3. Place the tow bar in position and install the clamps. Tighten the nuts to 47.5 N-m (35 ft-lb).

Note: Do not overtighten. This assembly needs to pivot easily.

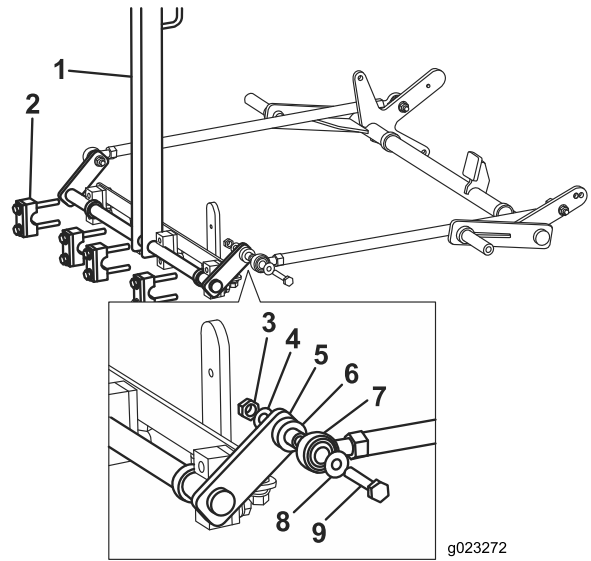


Figure 4

- | | |
|----------------------|-----------|
| 1. Tow Bar | 6. Washer |
| 2. Clamps | 7. Nut |
| 3. Nut | 8. Washer |
| 4. Washers | 9. Bolt |
| 5. Lift arm assembly | |

3. Install the transmission cover.

5

Installing the Lift Bar

Parts needed for this procedure:

2	Lift bar
---	----------

Procedure

1. Align the arms to ensure that the oil fittings in the rod ends are up to allow access.
2. Place the bolt through the washer and rod end, the bushing, the bar, the washer, and secure with the nut (Figure 4). Do not tighten the nuts. The nuts must be loose to allow adjustment to the tow bar later in the procedure.

6

Installing the Steering Wheel

Parts needed for this procedure:

1	Steering wheel
1	Steering shaft cover
1	Steering wheel cap

Procedure

1. Slide the steering shaft cover over the shaft (Figure 5).

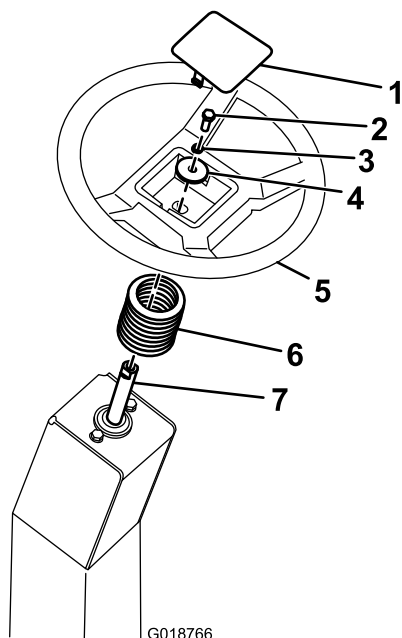


Figure 5

- | | |
|-----------------------|-------------------------|
| 1. Steering wheel cap | 5. Steering wheel |
| 2. Bolt | 6. Steering shaft cover |
| 3. Lock washer | 7. Steering shaft |
| 4. Large washer | |

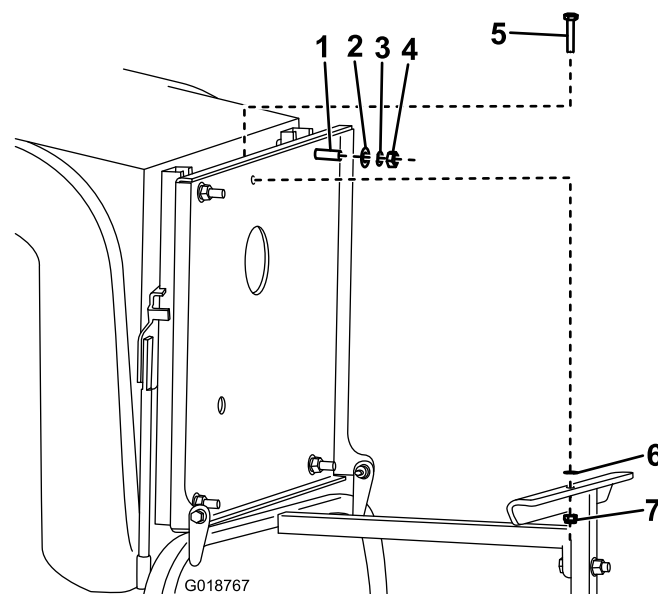


Figure 6

- | | |
|----------------|-----------|
| 1. Bolt | 5. Bolt |
| 2. Lock washer | 6. Washer |
| 3. Washer | 7. Nut |
| 4. Nut | |

8

Removing the Machine from the Pallet

No Parts Required

Procedure

1. Place pieces of wood on each side of the pallet, approximately 100–150 mm (4 to 6 inches) in height under both transport wheels.
2. Lift the machine slowly with the lift bar.
3. Once the machine is fully raised, remove the block from the pallet at the draw bar end and place it under the draw bar skid. The pallet can be moved away from the steering wheel end of the machine. Carefully roll the machine off of the wooded support and onto the ground.
4. Adjust the lifting rods to achieve a level draw bar and then tighten the M16 nuts to lock the adjustment.
5. Tighten the wheel lug nuts to a torque of 108 N-m (80 ft-lbs).
6. Store the lifting lever and secure it with the lynch pin.

Refer to the *Operator's Manual* and the *Engine Manual* for starting procedures.

Check the engine RPM and adjust it to 3200 RPM.

7

Installing the Seat

Parts needed for this procedure:

1	Seat
---	------

Procedure

1. Remove the nut and washers from each bolt.
2. Line up the bolts on the seat with the holes in the seat pan.
3. Place the seat onto the seat pan. Lift the seat pan carefully.
4. Install the lock washers and tighten all four of the nuts to the seat pan.
5. Lower the seat, adjust it to the most forward position and install the seat hold down bolt.