



Count on it.

Parts Catalog

17in Curved-Shaft Gas Trimmer

Model No. 51954—Serial No. 310000001 and Up



Ordering Replacement Parts

To order replacement parts, please supply the part number, the quantity, and the description of each part desired.

Understanding Reference Numbers

Each identified part in an illustration has a reference number. The reference number for a part also appears in the parts list, along with other information about the part.

This catalog uses two special reference number formats, one to indicate parts in a service assembly and another to indicate the quantity of a given part in an illustration.

Service Assembly Reference Numbers

Parts in service assemblies have reference numbers in the form a:b. The a represents the reference number of the entire service assembly and the b represents a sequential number unique to each part within the service assembly.

For example, a wheel assembly might be identified by reference number 6, the tire by 6:1, the valve by 6:2, and the wheel by 6:3. When you order the assembly identified by reference number 6, you receive all parts identified by reference numbers 6:1, 6:2, and 6:3. However, you may also order any part individually. Reference numbers of this type appear in illustration and in parts lists.

Reference Numbers Indicating Quantity

In an illustration, if a reference number indicates more than one part, the reference number has the form nX y. The n represents the quantity of the part, the X is the multiplication symbol, and the y represents the reference number.

For example, in an illustration, the reference number 2X 37 means that two of the parts identified by reference number 37 are indicated.

List of Abbreviations

AR: as required

ASM: assembly

BBC: blade brake control

BHTF: button head thread forming

CARR: carriage

CCW: counter clockwise

CW: clockwise

DEG: degrees

DPA: Dual Point Adjustment

ECM: electronic control module

EXT: external

FH: flat head

GA: gauge

HD: heavy-duty

HF: hex flange

HH: hex head

HHF: hex head flange

HHFTF: hex head flange thread forming

HJ: hex jam

HLH: hex lag head

HOC: height-of-cut

HSBH: hex socket button head

HSFH: hex socket flat head

HSH: hex socket head

HWH: hex washer head

HWHTF: hex washer head thread forming

HYD: hydraulic

LH: left hand

LP: Liquefied Petroleum Gas

LPG: Liquefied Petroleum Gas

NI: nylon insert

NPTF: national pipe thread fine

PFH: phillips flat head

PPH: phillips pan head

PPHTF: phillips pan head thread forming

PRH: phillips round head

PTH: phillips truss head

PTO: power-take-off

RH: right hand

ROPS: roll-over protection system

RRB: rear roller brush

SFH: slotted fillister head

SHH: slotted hex head

SHWH: slotted hex washer head

SPH: slotted pan head

SQH: square head

SRH: slotted round head

STD: standard

TAP: self tapping

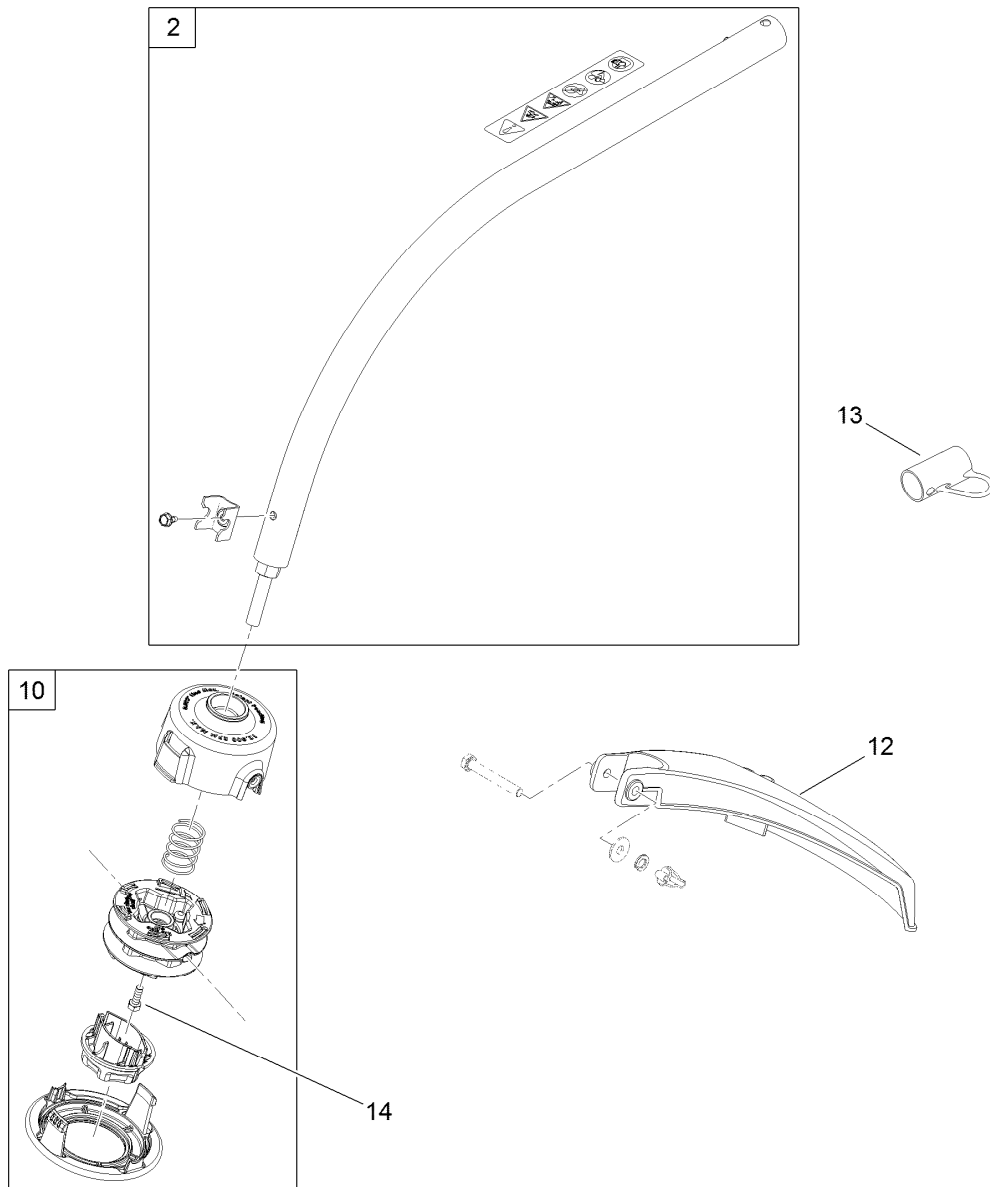
TTH: torx truss head

Contents

Trimmer Head, Shaft and Guard Assembly 4

Powerhead, Upper Shaft and Handle Assembly 5

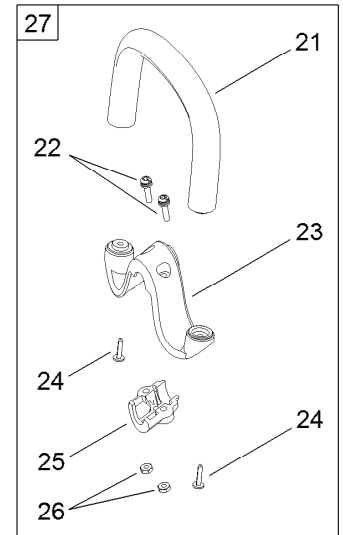
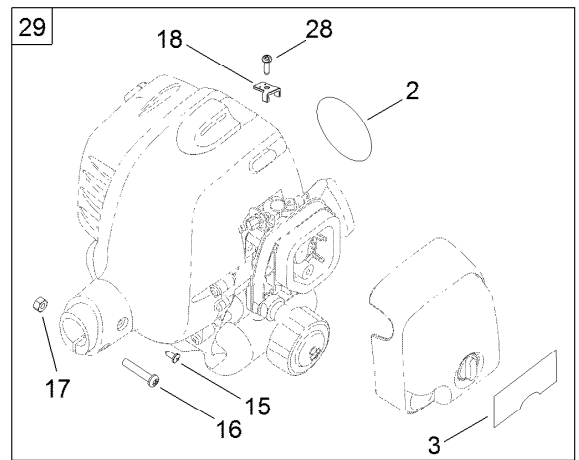
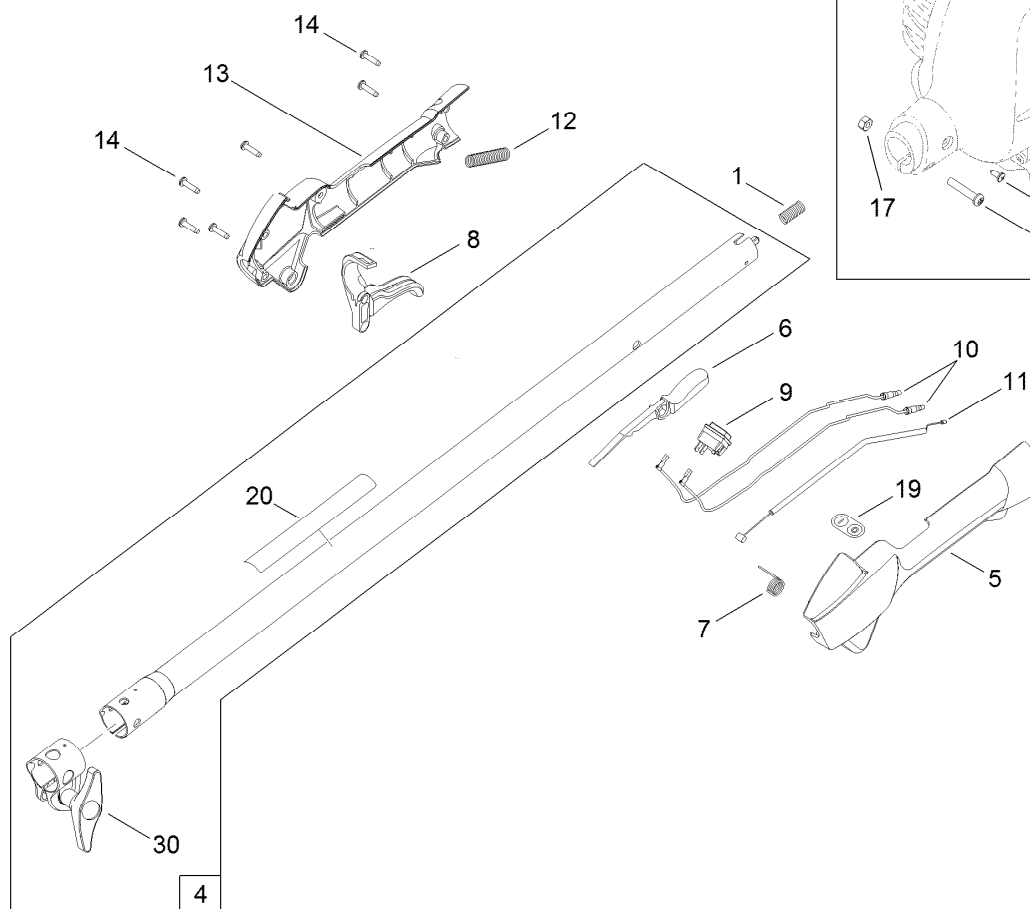
Muffler, Carburator, Fuel Tank and Housing Assembly..... 6



Trimmer Head, Shaft and Guard Assembly

Ref.	Part Number	Qty.	Description
2	308841011	1	Curved Shaft ASM
10	308923014	1	Trimmer Head ASM
12	308052005	1	Guard-Trimmer
13	518019002	1	Cap-Hanger
14	660650001	1	Bolt ●

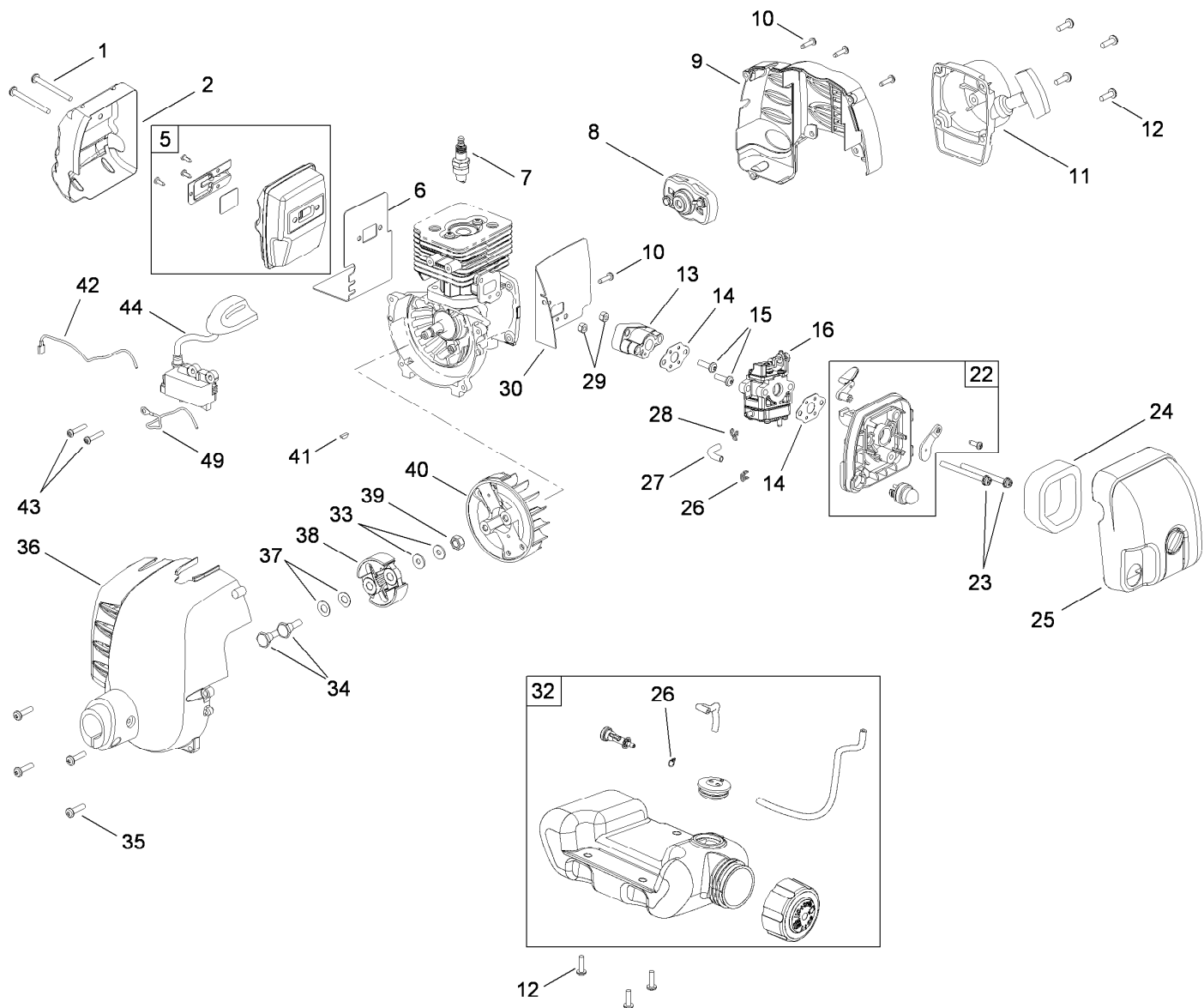
● Serviced separately, not sold with this kit



Powerhead, Upper Shaft and Handle Assembly

Ref.	Part Number	Qty.	Description
1	678906001	1	Spring-Compression
2	940865001	1	Plate-Logo
3	940686064	1	Label-Start, Lower
4	308159015	1	Upper Shaft ASM
5	518122001	1	Support-Handle, Rear
6	518125001	1	Button-Off, Lock
7	690694002	1	Spring-Trigger
8	518124001	1	Trigger
9	760394002	1	Switch
10	308863029	2	Lead
11	308225003	1	Cable-Throttle
12	518210004	1	Tube-Corrugated
13	518123001	1	Cover-Handle, Rear
14	660563002	6	Screw
15	660669001	1	Screw-PPH

Ref.	Part Number	Qty.	Description
16	T660697001	1	Screw
17	678029002	1	Nut-Hex
18	638133001	1	Clamp-Cable, Throttle
19	940864001	1	Label-On/Off
20	940657034	1	Label-Warning
21	000998535	1	Handle-Front
22	660653001	2	Screw
23	518038001	1	Clamp-M
24	660637002	2	Screw
25	518020001	1	Clamp
26	81068	2	Nut-Hex
27	308056003	1	Front Handle ASM
28	660734001	1	Screw
29	308466010	1	Powerhead ASM
30	308045008	1	Clamp-Boom



Muffler, Carburetor, Fuel Tank and Housing Assembly

Ref.	Part Number	Qty.	Description
1	660347001	2	Screw-Pan HD
2	638027002	1	Shield-Heat
5	300748021	1	Muffler ASM
6	630002006	1	Gasket-Muffler
7	870174001	1	Sparkplug
8	308004001	1	Pulley ASM
9	590470001	1	Housing-Engine, Rear
10	660563001	4	Screw
11	308430001	1	Recoil Starter ASM
12	660351001	7	Screw-Pan HD
13	518329001	1	Insulator-Dam, Heat
14	900711003	2	Gasket-Carburetor
15	660344003	2	Screw-Pan HD
16	308480001	1	Carburetor ASM
22	308478001	1	Filter Housing ASM
23	660346001	2	Screw-Pan HD
24	560873001	1	Element
25	308207004	1	Cover ASM
26	690699001	1	Clip-Hose

Ref.	Part Number	Qty.	Description
27	570259008	1	Line-Fuel
28	690700001	1	Clip-Hose
29	690840001	2	Nut
30	900711008	1	Gasket-Insulator
32	310833001	1	Fuel Tank And Cap ASM
33	690695001	2	Washer
34	6635301	2	Screw-Clutch
35	660344001	4	Screw-Pan HD
36	300754023	1	Front Housing ASM
37	690696001	2	Washer-Curved
38	300756006	1	Clutch ASM
39	690689001	1	Nut-Rotor
40	640574002	1	Rotor
41	690688001	1	Key-Woodruff
42	290143001	1	Wire-Lead, Black
43	660349001	2	Screw-Pan HD
44	290178006	1	Coil Boot ASM
49	290143002	1	Wire-Lead, Red

Notes:



Count on it.