



Z-Master OFZ
48" Rear Discharge Recycler Deck
Model No. 78477 – 89001 & Up

Parts Catalog

ORDERING REPLACEMENT PARTS

To order replacement parts, please supply: the part number, the quantity, and the description of each part desired.

Contents

Description	Page	Description	Page
Carrier Frame	1	Gear Box	4
Gear Box And Covers	2	Pneumatic Wheel Asm	5
Deck Asm And Blades	3	Note:	

Part Description Abbreviations

Part descriptions in this catalog may include the following abbreviations.

Abbreviation	Meaning	Abbreviation	Meaning
AR	as required	HWHTF	hex washer head thread forming
ASM	assembly	INC	incorporated
CARR	carriage	LH	left hand
DEG	degrees	PH	pan head
FH	flat head	PPH	Phillips pan head
GA	gauge	PTO	power take off
HF	hex flange	RH	right hand
HFW	hex flange washer	SFH	slotted fillister head
HH	hex head	SH	square head
HHF	hex head flange	SHWH	slotted hex washer head
HHST	hex head self tapping	SPH	slotted pan head
HJ	hex jam	STD	standard
HOC	height-of-cut	TAP	self tapping
HS	hex socket	TH	truss head
HSBH	hex socket button head	TTH	Torx truss head
HSFH	hex socket flat head	WH	wing head
HSH	hex socket head		
HWH	hex washer head		

Important Format Explanations

This catalog uses special formats to convey information in illustrations and parts lists. Specifically, one format is used in conjunction with service assemblies and another with quantities associated with reference numbers.

Service Assemblies

Parts within service assemblies have reference numbers in the form X:Y. X is the reference number of the service assembly and Y is a sequential number unique to each part within the service assembly.

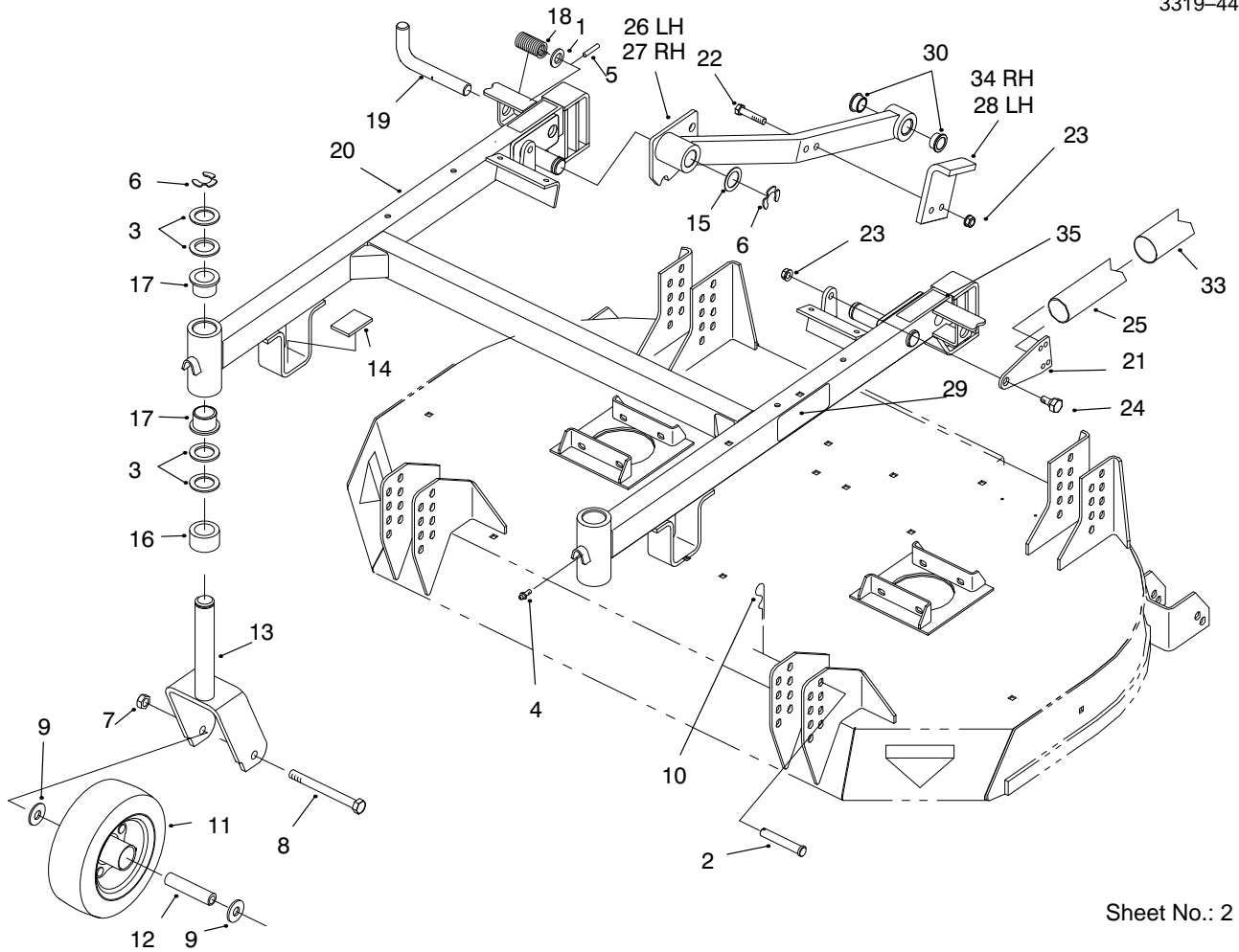
For example, a wheel assembly might be identified by reference number 6, the tire by 6:1, the valve by 6:2, and the wheel by 6:3. When you order the assembly identified by reference number 6, you receive all parts identified by reference numbers 6:1, 6:2, and 6:3. However, you may also order any part individually.

Reference numbers of this type appear in part lists and as callouts in illustrations.

Reference Numbers with Quantities

Illustrations may have a quantity in parentheses next to a reference number, in the form X (Y). X is the reference number. Y in parentheses is the quantity of the part identified by the reference number.

For example, the illustration callout 4 (2) indicates that two parts are used in that instance.

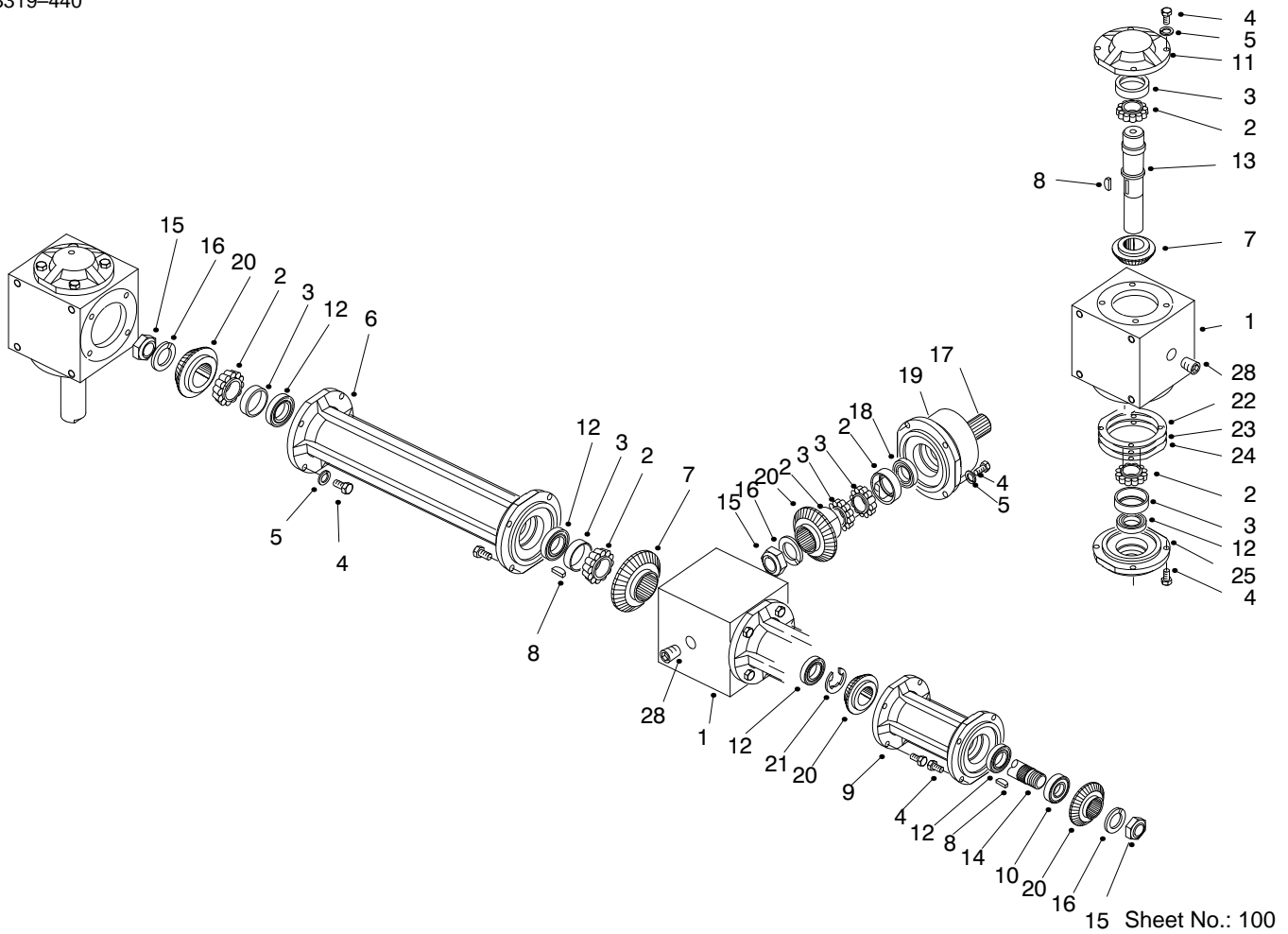


Sheet No.: 2

Carrier Frame

Ref. No.	Part No.	Qty.	Description
1	257-8	2	Washer-Thrust
2	283-55	4	Pin-Clevis
3	3-6781	8	Washer-Thrust
4	302-5	2	Fitting-Grease
5	32121-79	2	Roll Pin
6	32151-91	4	Ring-Retaining
7	32153-5	2	Nut-Locl
8	325-19	2	Screw-HH
9	3256-6	4	Washer-Flat
10	3290-355	4	Pin-Hair
11	68-8970	2	Tire & Bearing ASM
12	68-8980	2	Bushing-Spanner
13	74-0251	2	Fork-Castor
14	95-4303	2	Cushion-Rubber
15	9202514	2	Washer-Flat
16	93-1167	2	Spacer-Castor
17	94-1291	4	Bushing-Special
18	98-1339	2	Spring-Compression
19	98-1337	2	Pin-Pivot
20	95-4304	1	Frame-Carrier
21	95-4344	4	Plate-Spring
22	323-9	4	Screw-HH
23	3296-39	8	Nut-Lock
24	46-3380	4	Bolt-Shoulder
25	94-4664	2	Spring-Extension
26	94-4730-01	1	Push Arm LH

Ref. No.	Part No.	Qty.	Description
27	94-4731-01	1	Push Arm RH
28	94-9511	1	Stop-Pusharm
29	98-0816	1	Decal-H.o.c.
30	27-9080	4	Bushing
33	94-9550	2	Cover-Spring
34	94-9583	1	Stop-Pusharm
35	55-4300	2	Decal-Warning

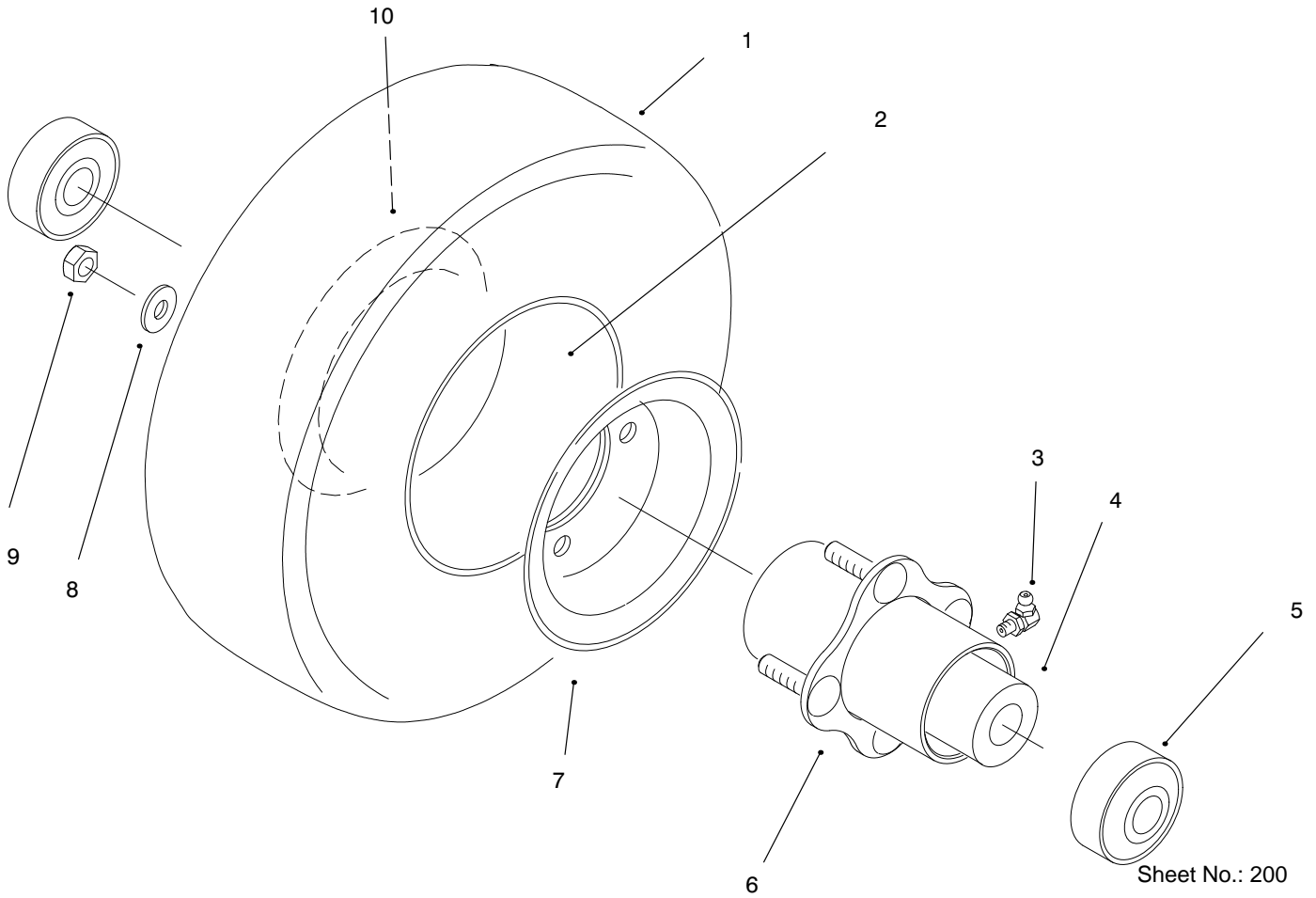


15 Sheet No.: 100

Gear Box

Ref. No.	Part No.	Qty.	Description
1	98-3321	3	Housing
2	98-1343	8	Bearing-Cone
3	62-3340	8	Bearing Cup
4	98-3324	54	Screw-HH
5	98-3325	54	Washer-Lock
6	98-3326	1	Connector-Hub
7	98-3327	3	Gear-RH
8	98-3328	3	Key
9	98-3329	1	Connector-Hub
10	98-3330	1	Bearing-Ball
11	98-3331	2	Cap-Blank
12	62-3400	6	Seal
13	98-3333	2	Shaft-Thru
14	98-3334	1	Shaft-Thru
15	98-3335	3	Nut-Lock
16	98-3336	3	Washer-Lock
17	98-3337	1	Hub-Shaft
18	98-3338	1	Seal
19	98-3339	1	Hub
20	98-3340	3	Pinion-LH
21	98-3341	1	Ring-Retaining
22	98-3342	1	Gasket-.015
23	98-3343	1	Gasket-.005
24	98-3344	1	Gasket-.003
25	98-3345	2	Cap-Thru
26	98-3346	1	I.d. Tag

Ref. No.	Part No.	Qty.	Description
27	98-3347	1	I.d. Tag Cover
28	62-3490	9	Pipe Plug (Solid)



Sheet No.: 200

Pneumatic Wheel Asm

Ref. No.	Part No.	Qty.	Description
1	68-8960	1	Tire-4 Ply Turf Saver
2	68-8950	1	Tube-w/Valve
3	1481	1	Fitting-Grease
4	62-5570	1	Bearing-Roller
5	62-5580	2	Bearing-Outside
6	68-8940	1	Hub-Center
7	68-8930	1	Wheel Half-Male
8	3253-4	4	Washer-Lock
9	3219-2	4	Nut-Hex
10	68-8920	1	Wheel Half-Female

Ref. No.	Part No.	Qty.	Description

