



Fan Kit

EFI Workman® Vehicles For Use With Multi Pro WM Turf Sprayer

Model No. 127-9719

Installation Instructions

⚠ WARNING

CALIFORNIA Proposition 65 Warning

This product contains a chemical or chemicals known to the State of California to cause cancer, birth defects, or reproductive harm.

The Fan kit is an attachment for a turf spray application vehicle and is intended to be used by professional, hired operators in commercial applications. It is primarily designed for reducing the air temperature under the sprayer assembly.

This product complies with all relevant European directives. For details, please see the separate product-specific Declaration of Conformity (DOC) sheet.

Read this manual carefully to learn how to operate and maintain your product properly. The information in this manual can help you and others avoid injury and product damage. Although Toro designs and produces safe products, you are responsible for operating the product properly and safely.

You may contact Toro directly at www.Toro.com for product and accessory information, help finding a dealer, or to register your product.

Whenever you need service, genuine Toro parts, or additional information, contact an Authorized Service Dealer or Toro Customer Service and have the model and serial numbers of your product ready.

Safety

This manual identifies potential hazards and has safety messages identified by the safety alert symbol (Figure 1), which signals a hazard that may cause serious injury or death if you do not follow the recommended precautions.



Figure 1

1. Safety alert symbol

This manual uses 2 words to highlight information.

Important calls attention to special mechanical information and **Note** emphasizes general information worthy of special attention.

Read also the safety and operation instructions in the vehicle *Operator's Manual*.

Lightning can cause severe injury or death. If lightning is seen or thunder is heard in the area, do not operate the machine; seek shelter.



Installation

Loose Parts

Use the chart below to verify that all parts have been shipped.

Procedure	Description	Qty.	Use
1	No parts required	–	Prepare the machine
2	Fan collar Fan Fan guard bracket Fan guard Hex bolt (5/16 - 18) Hex bolt M6 - 1 x 20 Nut	1 1 1 1 5 4 3	Install the Fan Kit.
3	No parts required	–	

1

Preparing to Install the Kit

No Parts Required

Procedure

1. Ensure that the machine is empty of all fluids. If chemicals have been used in the machine, flush the system thoroughly with clean water and drain the water; refer to your vehicle *Operator's Manual* for instructions.
2. Move the machine to a level surface and set the parking brake.
3. For machine models with a sprayer tank, perform the following:
 - A. Raise the sprayer tank until the lift cylinders are fully extended; refer to the *Operator's Manual* for the machine.
 - B. Remove the sprayer tank support from the storage brackets on back of the ROPS panel (Figure 2).

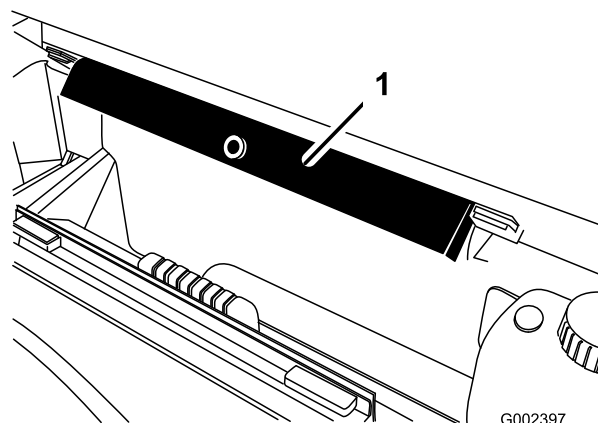


Figure 2

1. Sprayer tank support

- C. Push the sprayer tank support onto the cylinder rod, making sure the support end tabs rest on the end of cylinder barrel and on the cylinder rod end (Figure 3).

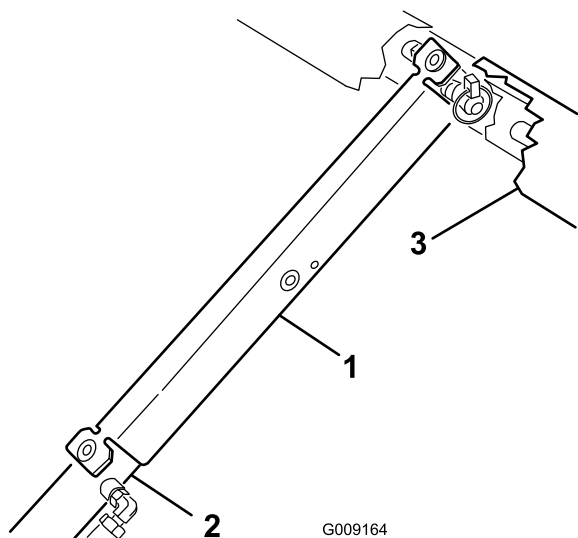


Figure 3

- | | |
|-------------------------|-----------------|
| 1. Sprayer tank support | 3. Sprayer tank |
| 2. Cylinder barrel | |

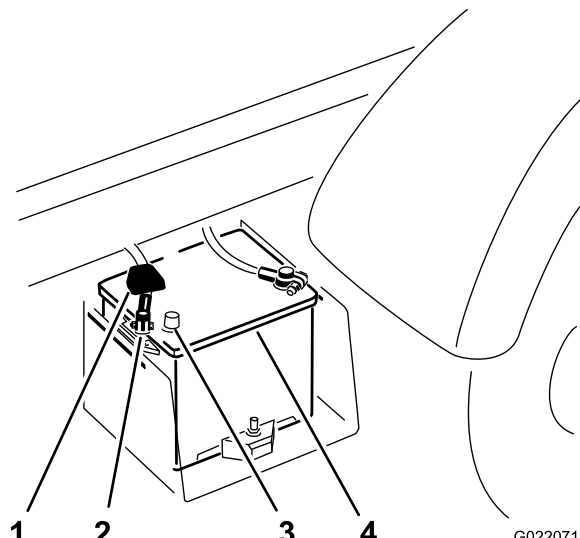


Figure 5

- | | |
|----------------------|-----------------|
| 1. Terminal cover | 3. Battery post |
| 2. Positive terminal | 4. Battery |

4. Shut off the engine, set the parking brake, and remove the key.
5. Disconnect the battery as follows:
 - A. Squeeze the battery cover to release the tabs from battery base (Figure 4).

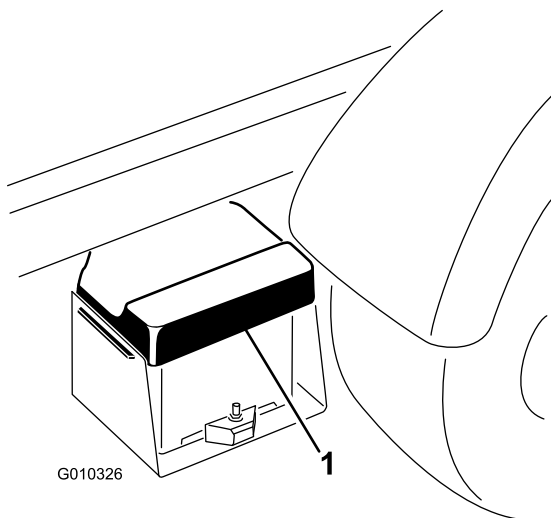


Figure 4

- B. Remove the battery cover from the battery base (Figure 4).
 - C. Remove the terminal of the positive battery cable from the battery post (Figure 5).

Note: Ensure that the terminal positive battery cable does not touch the battery post.

2

Installing the Fan Kit

Parts needed for this procedure:

1	Fan collar
1	Fan
1	Fan guard bracket
1	Fan guard
5	Hex bolt (5/16 - 18)
4	Hex bolt M6 - 1 x 20
3	Nut

Installing the Fan Kit

1. Remove the 4 bolts on the pulley; refer to Figure 6.

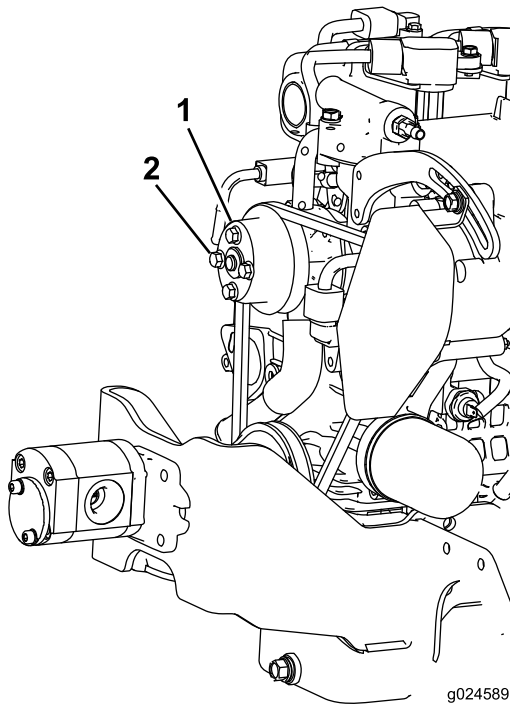


Figure 6

1. Pulley
2. Bolt

2. Install the fan collar and fan onto the pulley; refer to Figure 7.

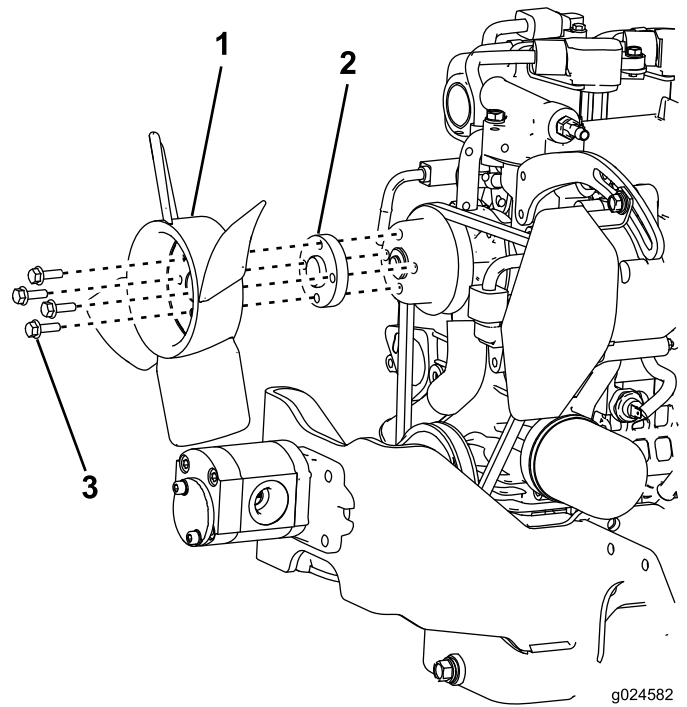


Figure 7

1. Fan
2. Fan collar
3. Hex bolt M6 - 1 x 20

3. Remove existing bolts and install the fan guard bracket; refer to Figure 8.

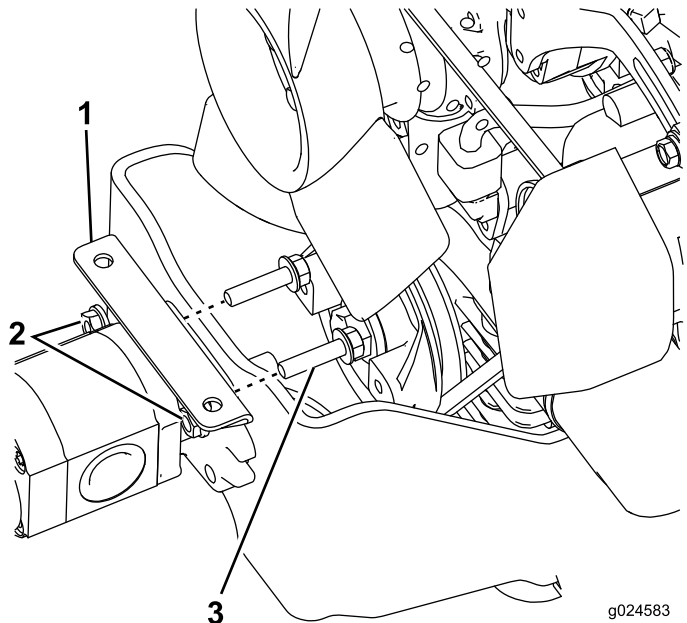


Figure 8

1. Fan guard bracket
2. Nuts
3. Hex bolt (5/16 - 18)

4. Install the fan guard; refer to Figure 9 and Figure 10.

Note: Move and secure any hoses that are in the way of or touch the fan guard.

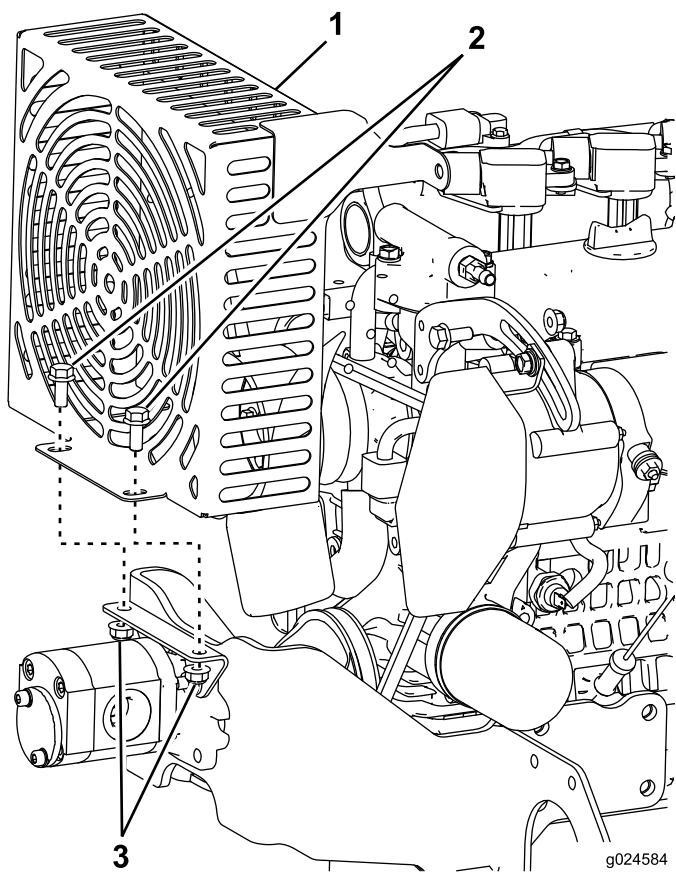


Figure 9

- 1. Fan guard
- 2. Hex bolt (5/16 - 18)
- 3. Nut

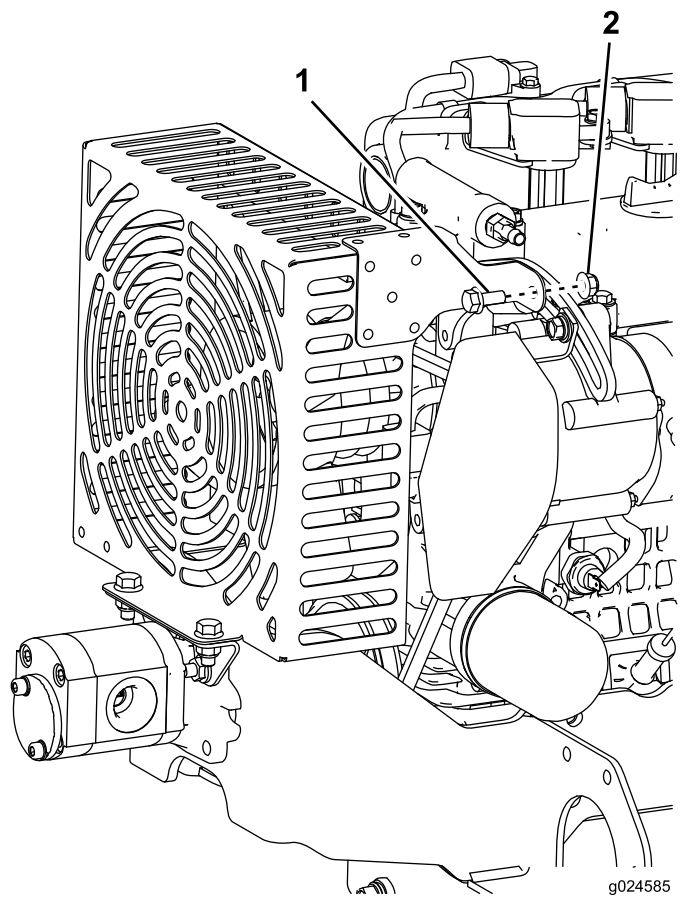


Figure 10

- 1. Hex bolt (5/16 - 18)
- 2. Nut

3

Lowering the Sprayer Tank

No Parts Required

Procedure

1. Pull the sprayer tank support from the cylinder rod and remove the support (Figure 3).
2. Insert the sprayer tank support into the brackets on the back of the ROPS panel (Figure 2).
3. Lower the sprayer tank; refer to the *Operator's Manual*.

Notes:



Count on it.