



Count on it.

Parts Catalog

50cm Mulching/Rear Bagging/Side Discharge Lawn Mower

Model No. 29645—Serial No. 314000001 and Up

Ordering Replacement Parts

To order replacement parts, please supply the part number, the quantity, and the description of each part desired.

Understanding Reference Numbers

Each identified part in an illustration has a reference number. The reference number for a part also appears in the parts list, along with other information about the part.

This catalog uses two special reference number formats, one to indicate parts in a service assembly and another to indicate the quantity of a given part in an illustration.

Service Assembly Reference Numbers

Parts in service assemblies have reference numbers in the form a:b. The a represents the reference number of the entire service assembly and the b represents a sequential number unique to each part within the service assembly.

For example, a wheel assembly might be identified by reference number 6, the tire by 6:1, the valve by 6:2, and the wheel by 6:3. When you order the assembly identified by reference number 6, you receive all parts identified by reference numbers 6:1, 6:2, and 6:3. However, you may also order any part individually. Reference numbers of this type appear in illustration and in parts lists.

Reference Numbers Indicating Quantity

In an illustration, if a reference number indicates more than one part, the reference number has the form nX y. The n represents the quantity of the part, the X is the multiplication symbol, and the y represents the reference number.

For example, in an illustration, the reference number 2X 37 means that two of the parts identified by reference number 37 are indicated.

List of Abbreviations

AR: as required

ASM: assembly

BBC: blade brake control

BHTF: button head thread forming

CARR: carriage

CCW: counter clockwise

CW: clockwise

DEG: degrees

DPA: Dual Point Adjustment

ECM: electronic control module

EXT: external

FH: flat head

GA: gauge

HD: heavy-duty

HF: hex flange

HH: hex head

HHF: hex head flange

HHFTF: hex head flange thread forming

HJ: hex jam

HLH: hex lag head

HOC: height-of-cut

HSBH: hex socket button head

HSFH: hex socket flat head

HSH: hex socket head

HWH: hex washer head

HWHTF: hex washer head thread forming

HYD: hydraulic

LH: left hand

LP: Liquefied Petroleum Gas

LPG: Liquefied Petroleum Gas

NI: nylon insert

NPTF: national pipe thread fine

PFH: phillips flat head

PPH: phillips pan head

PPHTF: phillips pan head thread forming

PRH: phillips round head

PTH: phillips truss head

PTO: power-take-off

RH: right hand

ROPS: roll-over protection system

RRB: rear roller brush

SFH: slotted fillister head

SHH: slotted hex head

SHWH: slotted hex washer head

SPH: slotted pan head

SQH: square head

SRH: slotted round head

STD: standard

TAP: self tapping

TTH: torx truss head

Contents

Deck and Rear Chute Assembly 4

Bag and Rear Deflector Assembly..... 6

Engine and Blade Assembly..... 8

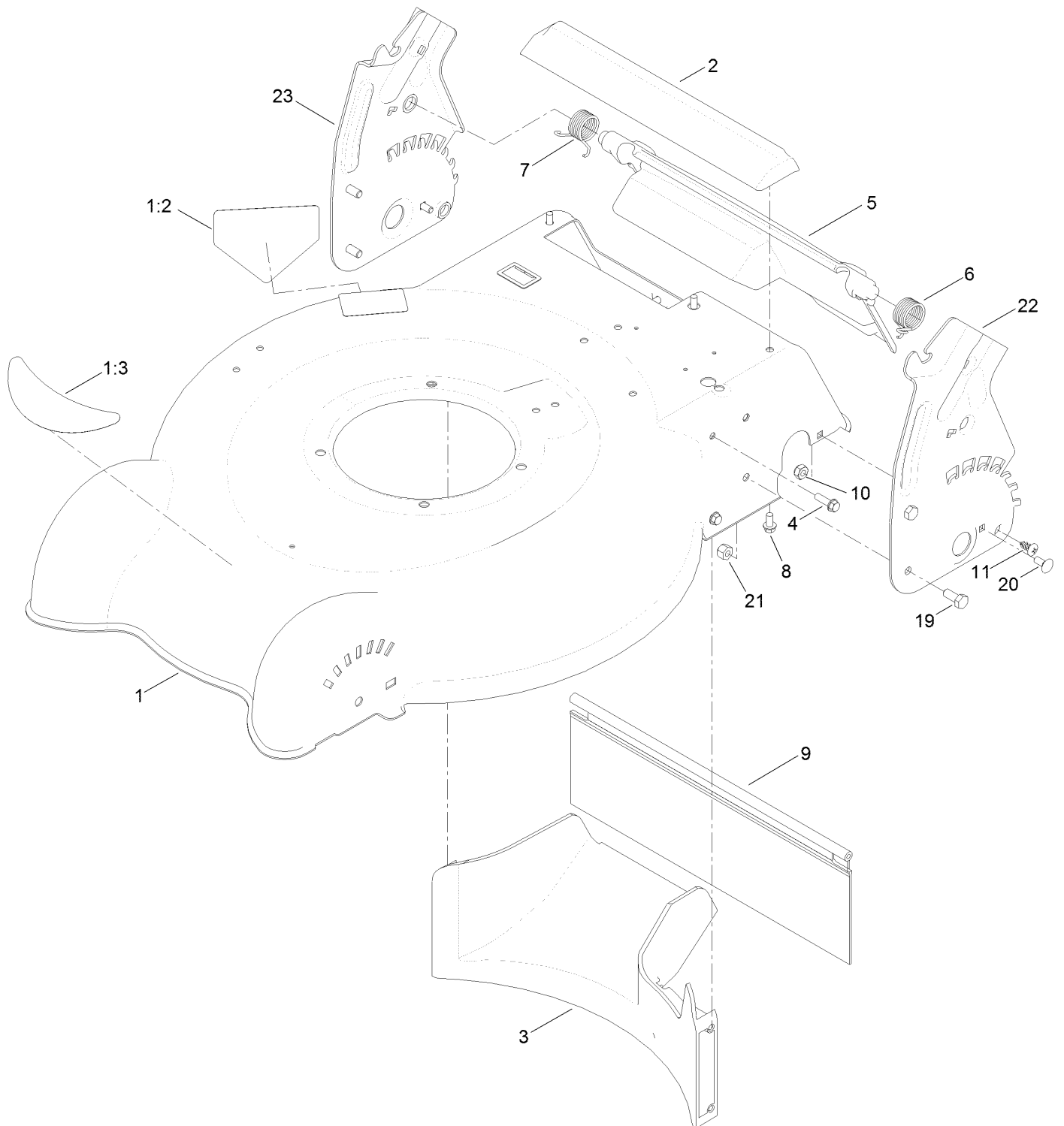
Front Wheel and Height-of-Cut Assembly 10

Transmission and Rear Wheel Drive Assembly..... 12

Handle Assembly 14

Attachments and Accessories 16

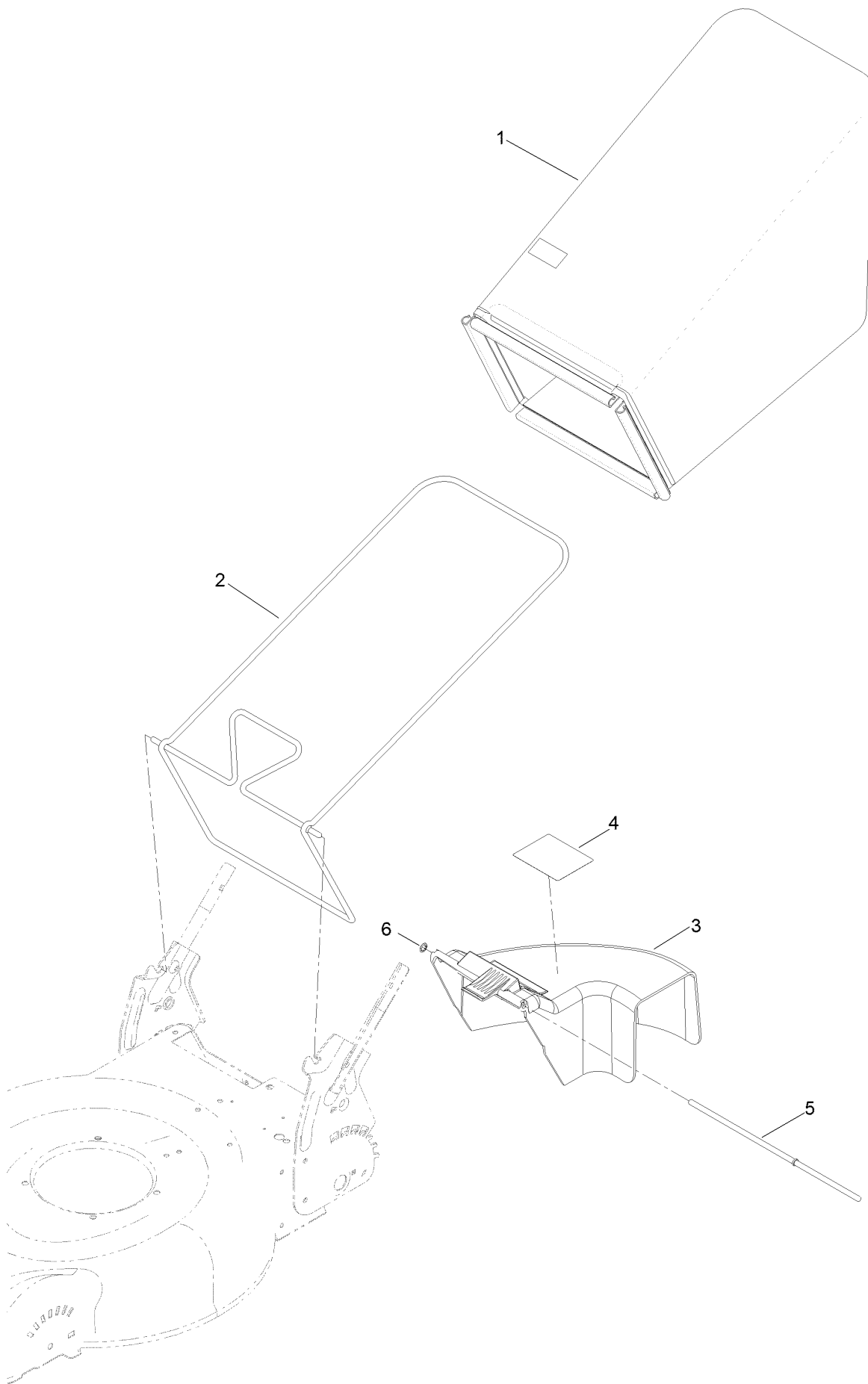
Deck and Rear Chute Assembly



Deck and Rear Chute Assembly (continued)

<i>Ref.</i>	<i>Part Number</i>	<i>Qty.</i>	<i>Description</i>	<i>Ref.</i>	<i>Part Number</i>	<i>Qty.</i>	<i>Description</i>
1	117-5944	1	Housing ASM	8	46-8093	3	Screw-Plastite
1:2	112-8760	1	Decal-Danger	9	125-2517	1	Shield-Trailing
1:3	117-5947	1	Decal-Deck	10	3296-16	2	Nut-Lock, NI
2	112-8845	1	Chute-Rear	11	117-1092	2	Screw-PTH
3	112-8821	1	Baffle-Rear	19	322-3	4	Screw-HH
4	46-8091	5	Screw-HWH	20	3229-11	2	Screw-CARR
5	119-7029	1	Rear Deflector ASM	21	3296-29	4	Nut-Lock, NI
6	119-7015	1	Spring-Torsion, LH	22	112-8822-03	1	Plate-HOC, LH
7	119-7016	1	Spring-Torsion, RH	23	112-8823-03	1	Plate-HOC, RH

Bag and Rear Deflector Assembly

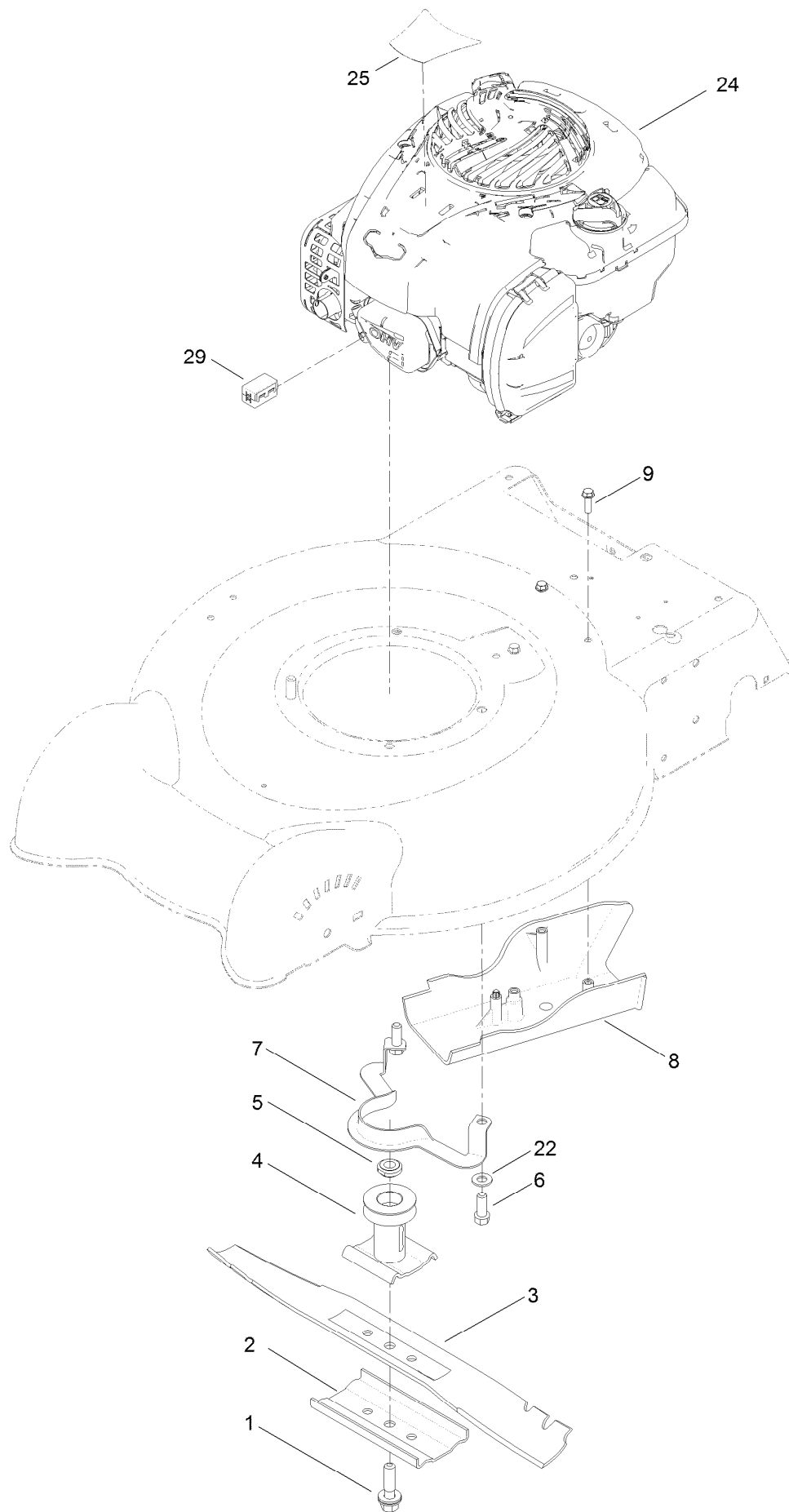


Bag and Rear Deflector Assembly (continued)

<i>Ref.</i>	<i>Part Number</i>	<i>Qty.</i>	<i>Description</i>
1	119-3759	1	Grass Bag ASM
2	120-7029-03	1	Frame-Bag
3	119-3762	1	Rear Deflector ASM

<i>Ref.</i>	<i>Part Number</i>	<i>Qty.</i>	<i>Description</i>
4	117-4143	1	Decal-Warning
5	117-4159	1	Rod
6	32151-72	1	Ring-Retaining

Engine and Blade Assembly



Engine and Blade Assembly (continued)

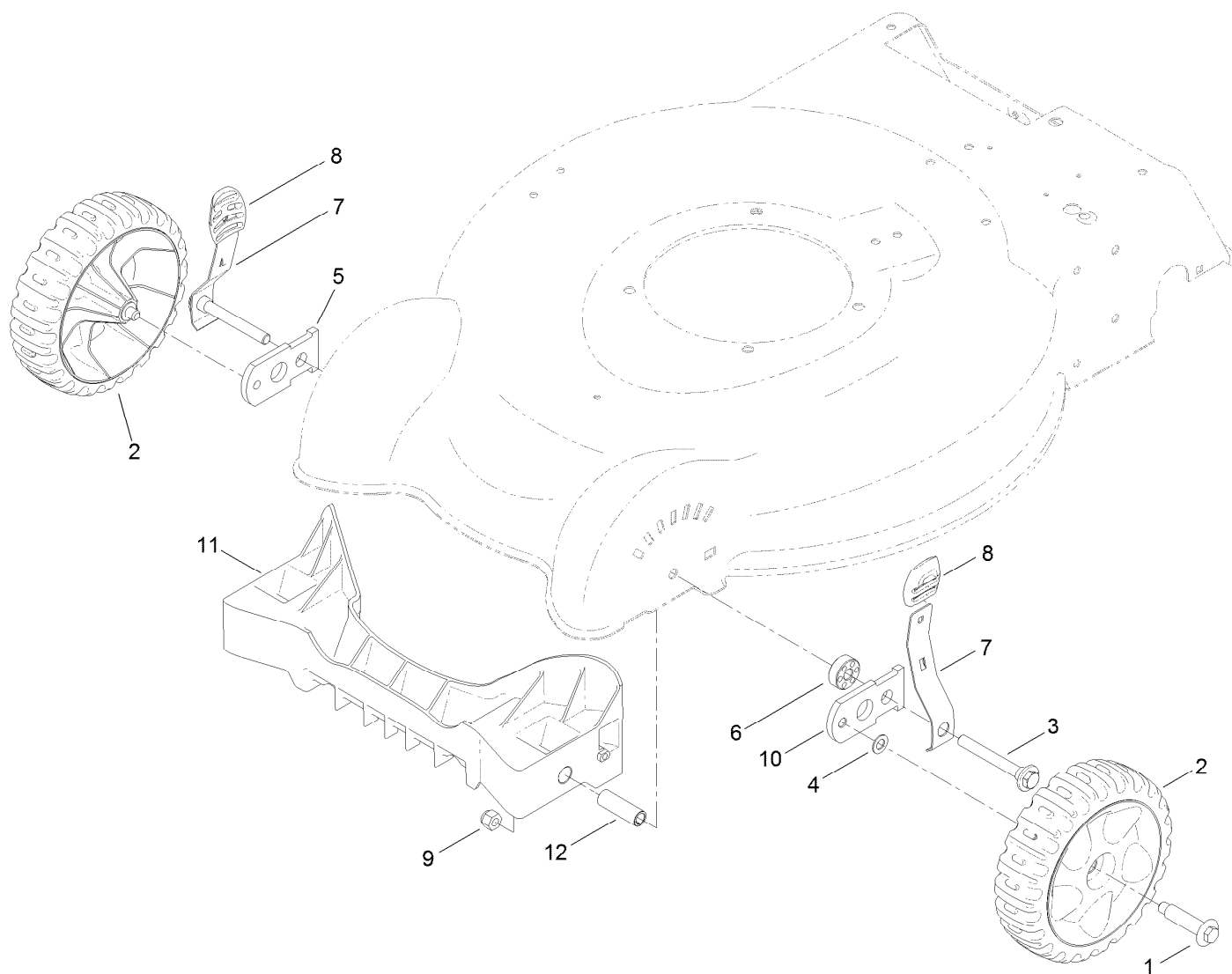
<i>Ref.</i>	<i>Part Number</i>	<i>Qty.</i>	<i>Description</i>
1	117-5270	1	Bolt-Blade
2	108-3766-03	1	Support-Blade
3	112-8841-03	1	Blade-20 Inch
4	125-2500	1	Driver-Blade
5	125-2502	1	Spacer-Driver
6	95-1726	3	Screw-Taptite
7	105-3030-03	1	Guide-Belt

<i>Ref.</i>	<i>Part Number</i>	<i>Qty.</i>	<i>Description</i>
8	112-8829	1	Cover-Belt
9	46-8091	3	Screw-HWH
22	3256-24	2	Washer-Flat
24		1	Engine-Briggs, 09P7020098F1 ● ■
25	127-6860	1	Decal-Engine
29	125-5054	1	Ferrite-Clamp On

● Not serviced separately

■ Obtain parts from www.briggsandstratton.com

Front Wheel and Height-of-Cut Assembly

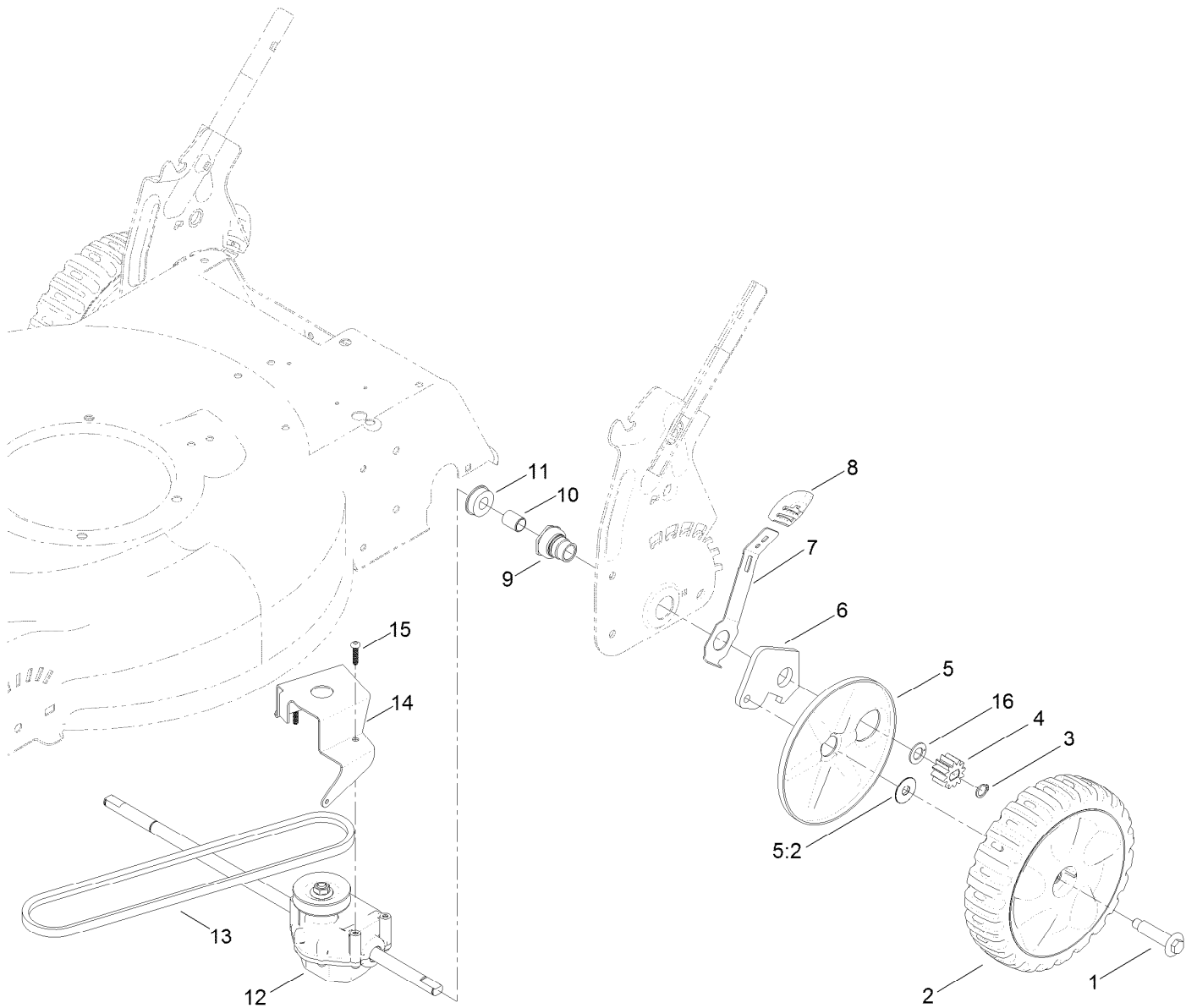


Front Wheel and Height-of-Cut Assembly (continued)

<i>Ref.</i>	<i>Part Number</i>	<i>Qty.</i>	<i>Description</i>
1	614650	2	Bolt-Shoulder
2	119-3777	2	7 Inch Wheel And Tire ASM
3	117-5996	2	Bolt-Shoulder
4	40-1940	2	Washer
5	107-3877	1	Arm-Pivot, RH
6	117-5997	2	Spacer-Arm, Pivot

<i>Ref.</i>	<i>Part Number</i>	<i>Qty.</i>	<i>Description</i>
7	112-8828	2	Arm-Spring, Front
8	105-3042	2	Knob-Lever, HOC
9	3296-39	2	Nut-Lock, NI
10	108-1044	1	Arm-Pivot, LH
11	117-5971	1	Baffle-Front, Rwd (Ce)
12	117-5992	2	Spacer-Baffle, Front

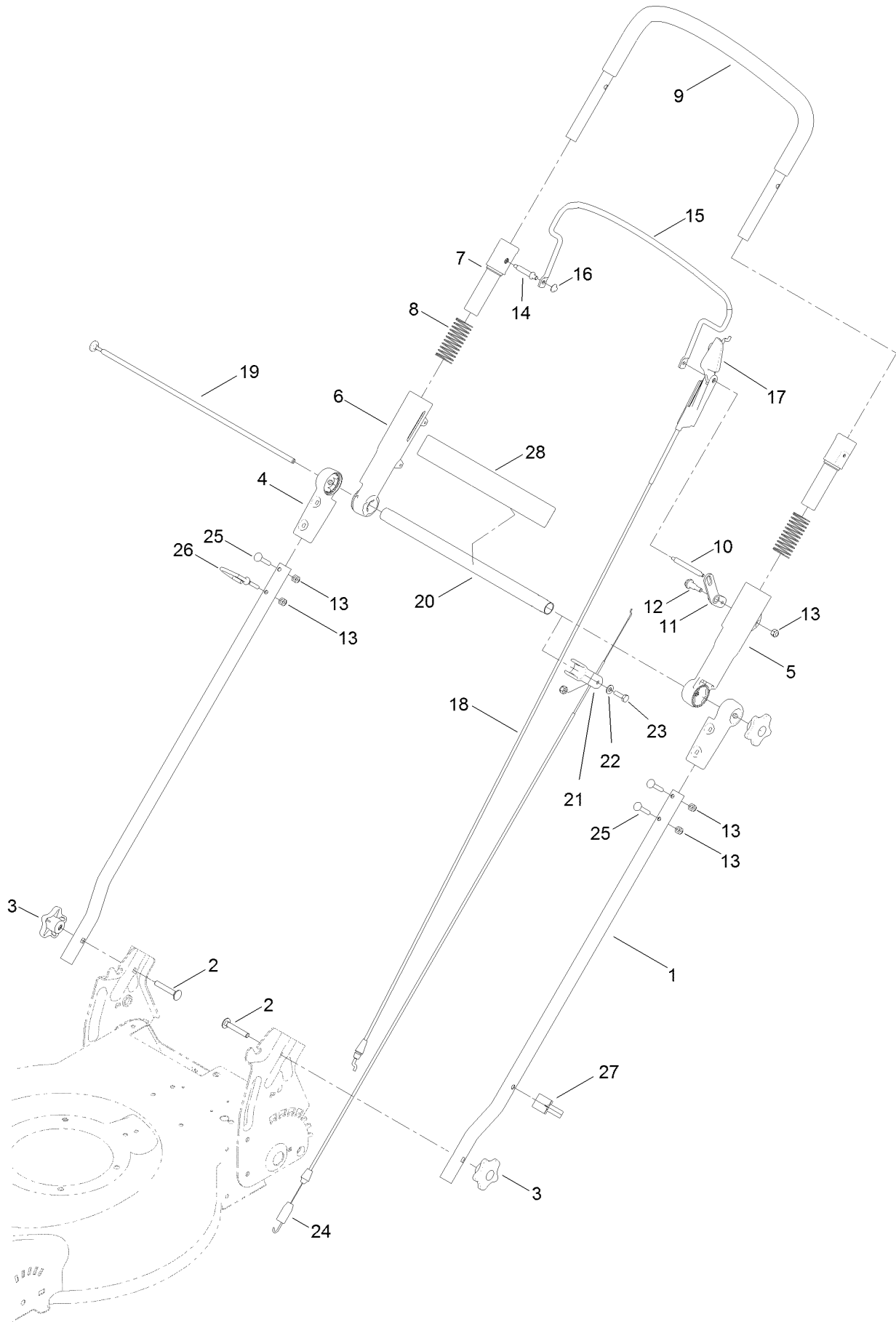
Transmission and Rear Wheel Drive Assembly



Transmission and Rear Wheel Drive Assembly (continued)

<i>Ref.</i>	<i>Part Number</i>	<i>Qty.</i>	<i>Description</i>	<i>Ref.</i>	<i>Part Number</i>	<i>Qty.</i>	<i>Description</i>
1	614650	2	Bolt-Shoulder	8	105-3042	2	Knob-Lever, HOC
2	119-7068	2	8 Inch Wheel And Gear ASM	9	108-9779	2	Retainer-Bushing, HOC
3	32151-61	2	Ring-Retaining	10	108-9782	2	Bushing-Sleeve
4	115-4668	2	Gear-Pinion	11	104-8699	2	Bearing-Ball
5	110-1792	2	Wheel Cover ASM	12	121-2332	1	Transmission ASM
5:2	614426	1	Washer-Stepped	13	110-9429	1	V-Belt
6	108-9781	2	Arm-Pivot, Rear	14	114-7977-03	1	Bracket-Transmission
7	108-9780	2	Arm-Spring	15	108-7476	3	Screw-Plastite
				16	110-7191	2	Washer-Thrust

Handle Assembly



Handle Assembly (continued)

<i>Ref.</i>	<i>Part Number</i>	<i>Qty.</i>	<i>Description</i>	<i>Ref.</i>	<i>Part Number</i>	<i>Qty.</i>	<i>Description</i>
1	121-2334-03	2	Handle-Lower	15	110-1819-03	1	Bail-Brake
2	3230-6	2	Screw-CARR	16	108-9378	1	Retainer-Push On
3	117-5976	3	Knob-Handle	17	112-8764	1	Stop-Pivot
4	107-3865	2	Mount-Handle, Lower	18	121-5820	1	Cable-Brake
5	112-1544	1	Sleeve-Outer, LH	19	107-3871	1	Rod-Threaded
6	112-1545	1	Sleeve-Outer, RH	20	107-3867-03	1	Tube-Cross
7	112-8754	2	Sleeve-Inner	21	112-8801	1	Clamp-Cable
8	107-3869	2	Spring-Compression	22	3256-1	1	Washer-Flat
9	108-0974	1	Upper Handle ASM	23	321-5	1	Screw-HH
10	108-1008	1	Pin-Bail, LH	24	121-2338	1	Cable-Traction
11	107-3893	1	Lever-Traction	25	108-0988	3	Screw-CARR
12	104-0858	1	Bolt-Shoulder	26	107-3908	1	Guide-Rope, Upper
13	3296-73	6	Nut-Lock, NI	27	114-7988	1	Guide-Cable
14	108-0959	1	Pin-Handle	28	120-3907	1	Decal-Ads

Attachments and Accessories

For 29645 50cm Mulching/Rear Bagging/Side Discharge Lawn Mower

Product Name	Model/Part
Lawnmower Cover.....	490-7462
Rear-Discharge Deflector, 2009 and After 20in Steel Deck Mower	89964

Notes:

Notes:

Notes:



Count on it.