



**Count on it.**

**Parts Catalog**

**Trencher Drive**

**Pro Sneak 365 Vibratory Plow**

Model No. 25411—Serial No. 314000001 and Up

Model No. 25411E—Serial No. 314000001 and Up



# Ordering Replacement Parts

To order replacement parts, please supply the part number, the quantity, and the description of each part desired.

## Understanding Reference Numbers

Each identified part in an illustration has a reference number. The reference number for a part also appears in the parts list, along with other information about the part.

This catalog uses two special reference number formats, one to indicate parts in a service assembly and another to indicate the quantity of a given part in an illustration.

## Service Assembly Reference Numbers

Parts in service assemblies have reference numbers in the form a:b. The a represents the reference number of the entire service assembly and the b represents a sequential number unique to each part within the service assembly.

For example, a wheel assembly might be identified by reference number 6, the tire by 6:1, the valve by 6:2, and the wheel by 6:3. When you order the assembly identified by reference number 6, you receive all parts identified by reference numbers 6:1, 6:2, and 6:3. However, you may also order any part individually. Reference numbers of this type appear in illustration and in parts lists.

## Reference Numbers Indicating Quantity

In an illustration, if a reference number indicates more than one part, the reference number has the form nX y. The n represents the quantity of the part, the X is the multiplication symbol, and the y represents the reference number.

For example, in an illustration, the reference number 2X 37 means that two of the parts identified by reference number 37 are indicated.

# List of Abbreviations

**AR:** as required

**ASM:** assembly

**BBC:** blade brake control

**BHTF:** button head thread forming

**CARR:** carriage

**CCW:** counter clockwise

**CW:** clockwise

**DEG:** degrees

**DPA:** Dual Point Adjustment

**ECM:** electronic control module

**EXT:** external

**FH:** flat head

**GA:** gauge

**HD:** heavy-duty

**HF:** hex flange

**HH:** hex head

**HHF:** hex head flange

**HHFTF:** hex head flange thread forming

**HJ:** hex jam

**HLH:** hex lag head

**HOC:** height-of-cut

**HP:** high pressure

**HSBH:** hex socket button head

**HSFH:** hex socket flat head

**HSH:** hex socket head

**HWH:** hex washer head

**HWHTF:** hex washer head thread forming

**HYD:** hydraulic

**LH:** left hand

**LP:** low pressure

**LPG:** Liquefied Petroleum Gas

**NI:** nylon insert

**NPTF:** national pipe thread fine

**PFH:** phillips flat head

**PPH:** phillips pan head

**PPHTF:** phillips pan head thread forming

**PRH:** phillips round head

**PTH:** phillips truss head

**PTO:** power-take-off

**RH:** right hand

**ROPS:** roll-over protection system

**RRB:** rear roller brush

**SFH:** slotted fillister head

**SHH:** slotted hex head

**SHWH:** slotted hex washer head

**SPH:** slotted pan head

**SQH:** square head

**SRH:** slotted round head

**STD:** standard

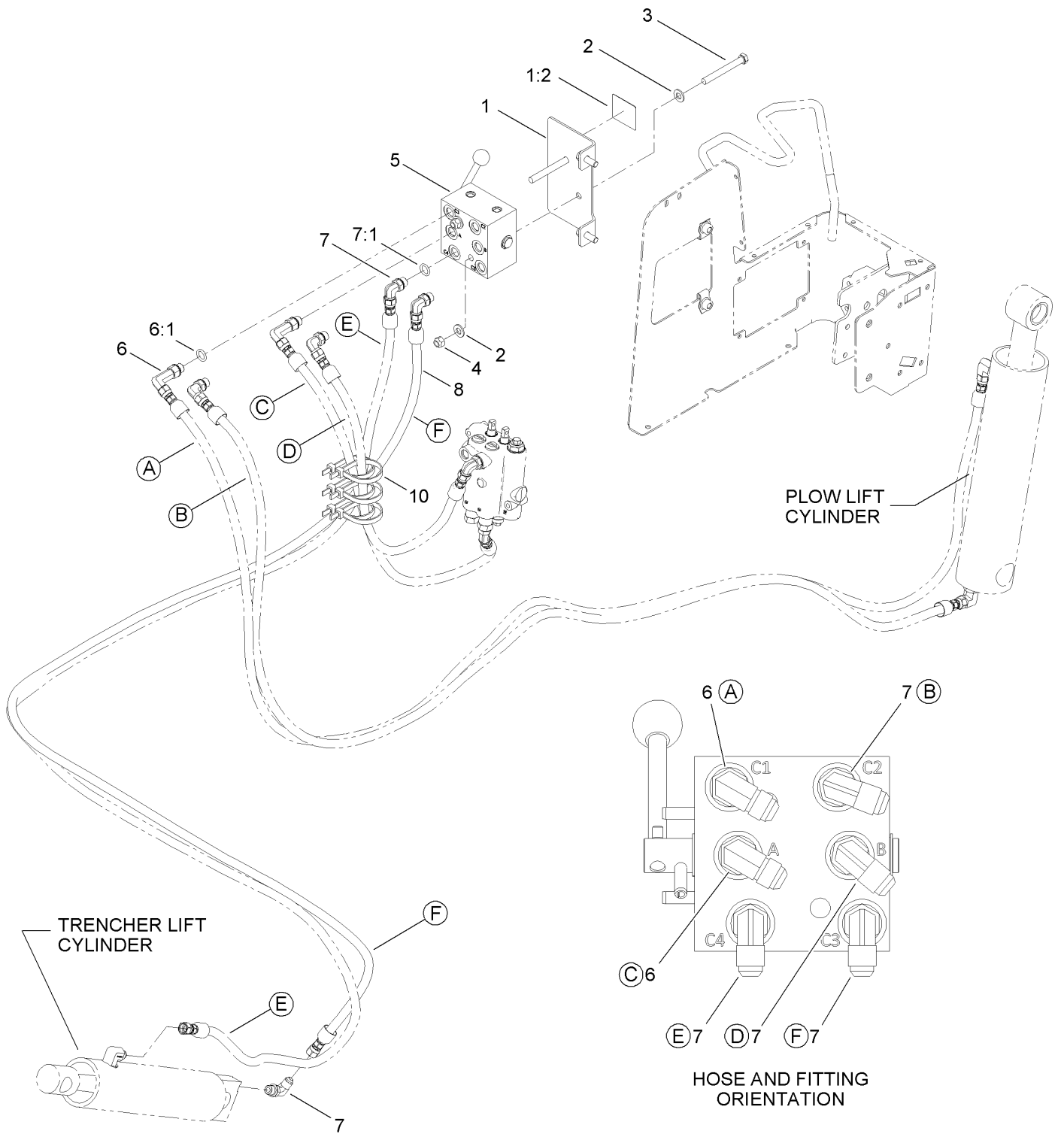
**TAP:** self tapping

**TTH:** torx truss head

# Contents

Hydraulic Valve Assembly . . . . .	4
Hydraulic Control Selector Valve Assembly . . . . .	6
Trencher Valve and Hydraulic Plumbing Assembly . . . . .	8
Frame Assembly . . . . .	10
Hydraulic Motor Assembly No. AU188974A1 . . . . .	12
Boom Mount and Drive Shaft Assembly . . . . .	14

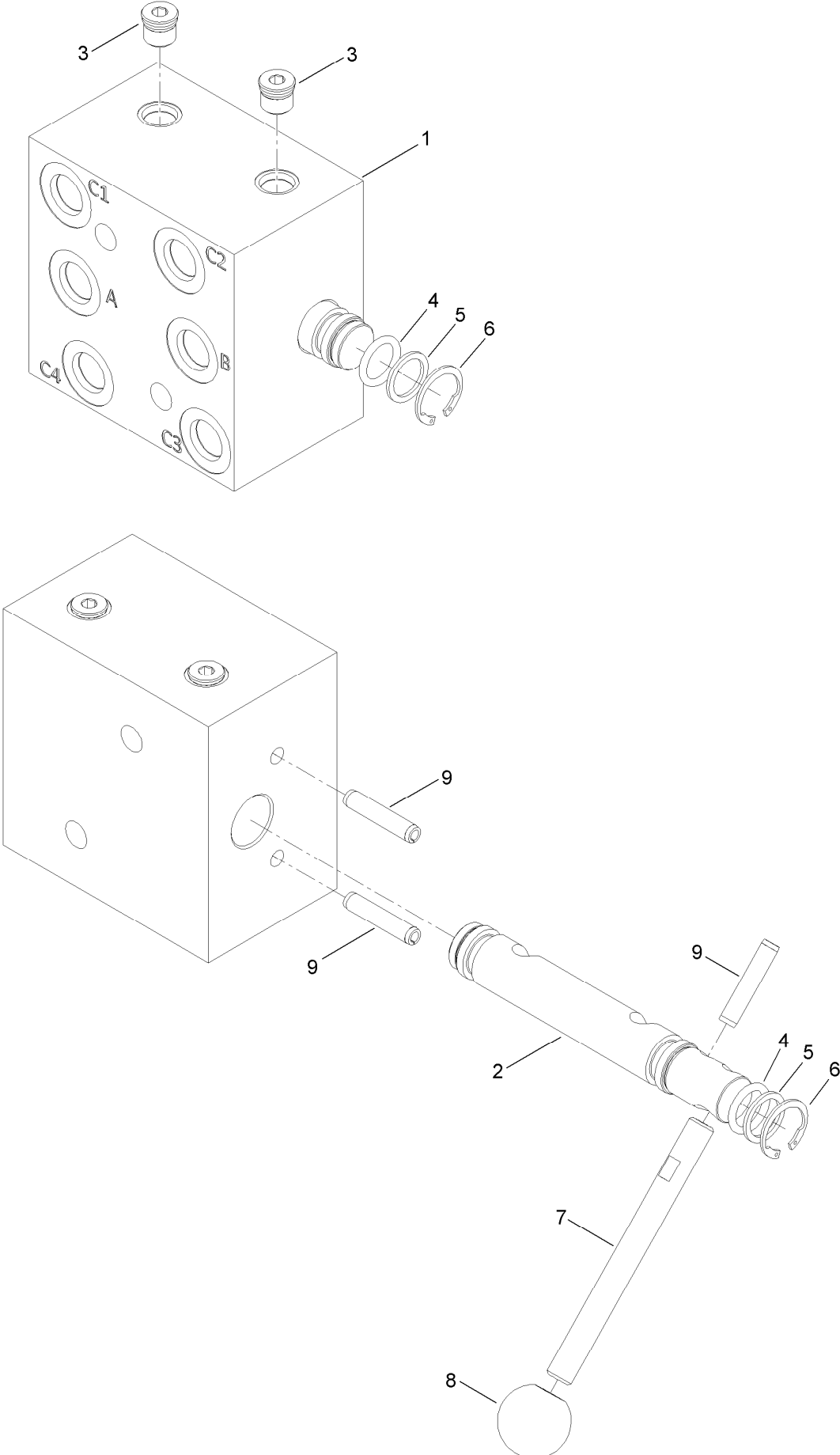
# Hydraulic Valve Assembly



## Hydraulic Valve Assembly (continued)

<i>Ref.</i>	<i>Part Number</i>	<i>Qty.</i>	<i>Description</i>	<i>Ref.</i>	<i>Part Number</i>	<i>Qty.</i>	<i>Description</i>
1	130-7353	1	Valve Selector Bracket ASM	6	92-3505	2	Fitting-Adaptor, 90 DEG
1:2	127-1826	1	Decal-Attachment Selector	6:1	237-42	1	O-Ring
2	3256-24	4	Washer-Flat	7	353-374	5	Fitting-Elbow, 90 DEG
3	AU426-652	2	Bolt	7:1	237-42	1	O-Ring
4	97-1204	2	Nut-Hex	8	127-1017	1	Hose ASM
5	127-6557	1	Control Selector Valve ASM	10	3334-945	6	Tie-Cable

# Hydraulic Control Selector Valve Assembly

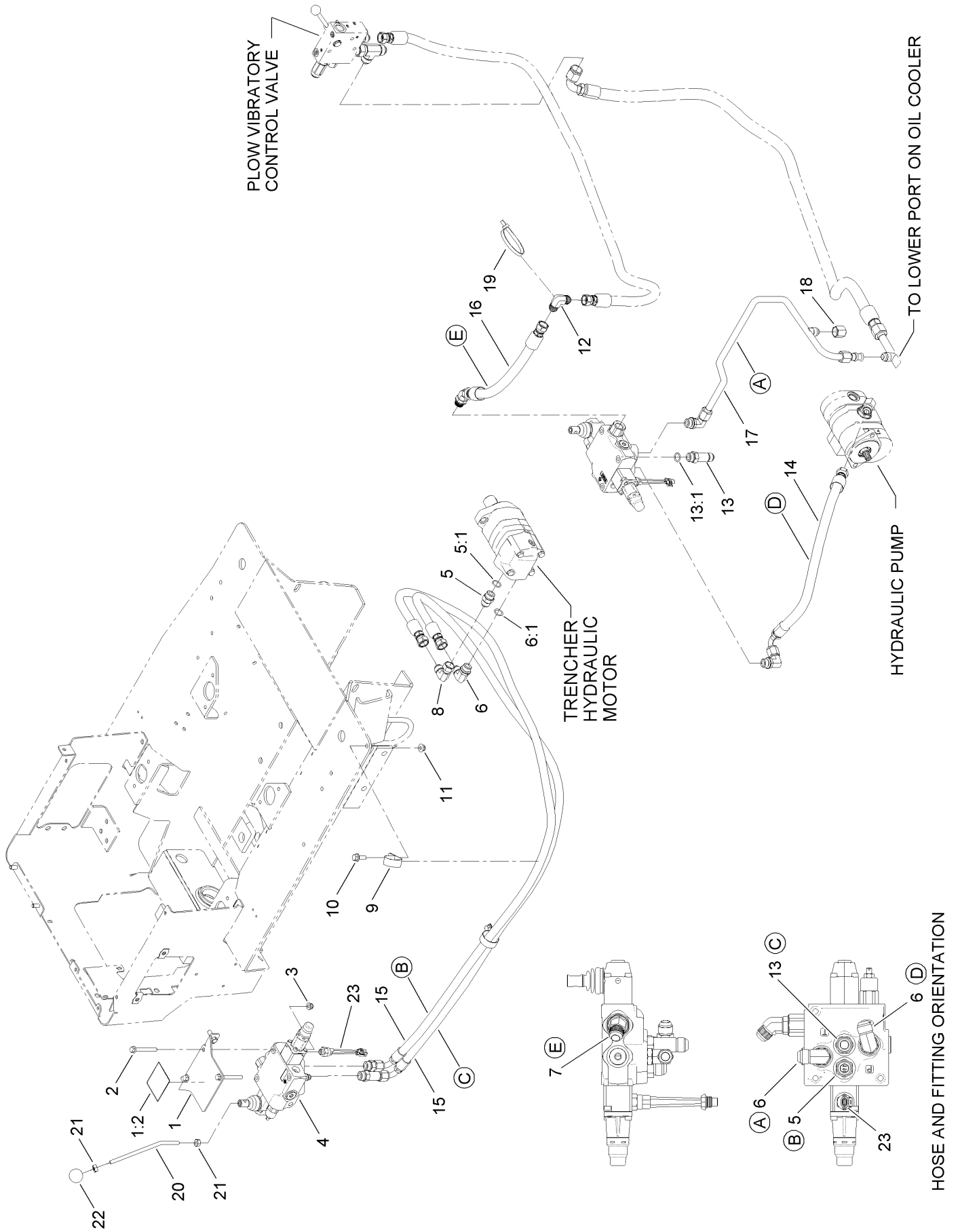


# Hydraulic Control Selector Valve Assembly (continued)

<i>Ref.</i>	<i>Part Number</i>	<i>Qty.</i>	<i>Description</i>	<i>Ref.</i>	<i>Part Number</i>	<i>Qty.</i>	<i>Description</i>
1		1	Block-Manifold ●	6	112-6532	2	Ring-Retaining
2	131-2702	1	Spool-Selector	7	131-2701	1	Handle-Spool, Long
3		2	Plug ●	8	131-2700	1	Knob-Ball, Plastic
4	117-4606	2	O-Ring	9	112-6531	3	Pin-Spring
5	112-6534	2	Ring-Back Up				

● Not serviced separately

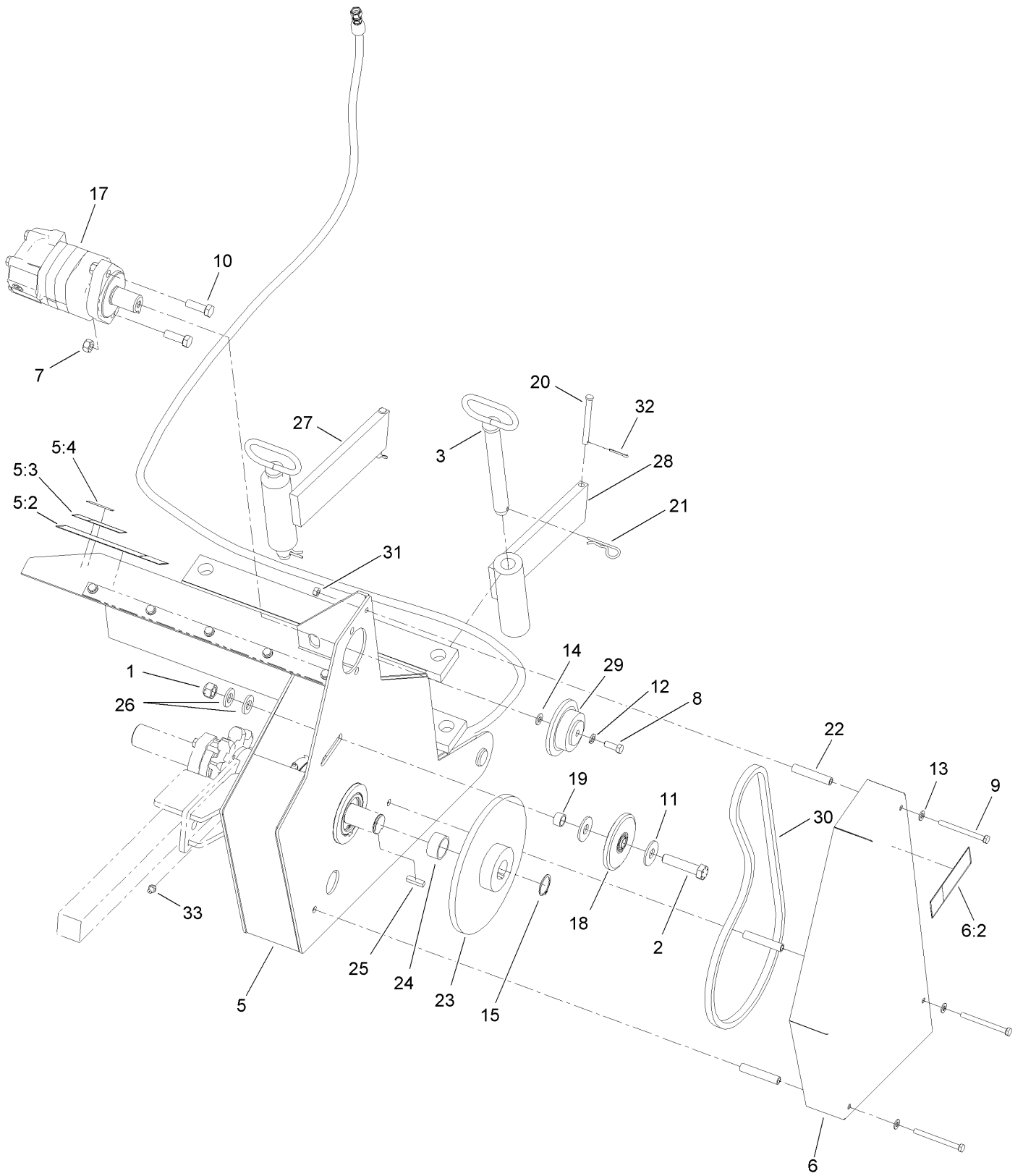
# Trencher Valve and Hydraulic Plumbing Assembly



# Trencher Valve and Hydraulic Plumbing Assembly (continued)

<i>Ref.</i>	<i>Part Number</i>	<i>Qty.</i>	<i>Description</i>	<i>Ref.</i>	<i>Part Number</i>	<i>Qty.</i>	<i>Description</i>
1	130-7351	1	Trencher Bracket ASM	12	130-7374	1	Fitting-Elbow, 90 DEG
1:2	125-6678	1	Decal-Chain Direction	13	130-4318	1	Fitting-Straight
2	33104-070	3	Screw-HHF	13:1	237-80	1	O-Ring
3	104-3082	3	Nut-Lock, HHF	14	130-4305	1	HYD Hose ASM
4	130-4304	1	Valve-Trencher	15	127-1012	2	HYD Hose ASM
5	353-385	2	Fitting-Straight	16	127-1010	1	HYD Hose ASM
5:1	237-80	1	O-Ring	17	130-7356	1	HYD Tube ASM
6	353-370	3	Fitting-Elbow, 90 DEG	18	AU218-756	1	Fitting-Cap
6:1	237-80	1	O-Ring	19	3334-945	1	Tie-Cable
7	353-389	1	Fitting-Elbow, 45 DEG	20	130-4348	1	Lever-Trencher
8	94-7023	1	Adaptor	21	33015-00	2	Nut-Hex
9	2412-147	2	Clamp	22	130-7377	1	Knob-Round
10	3234-11	2	Screw-HHF	23	72-4310	1	Switch-Ball
11	104-8301	2	Nut-Flange, NI				

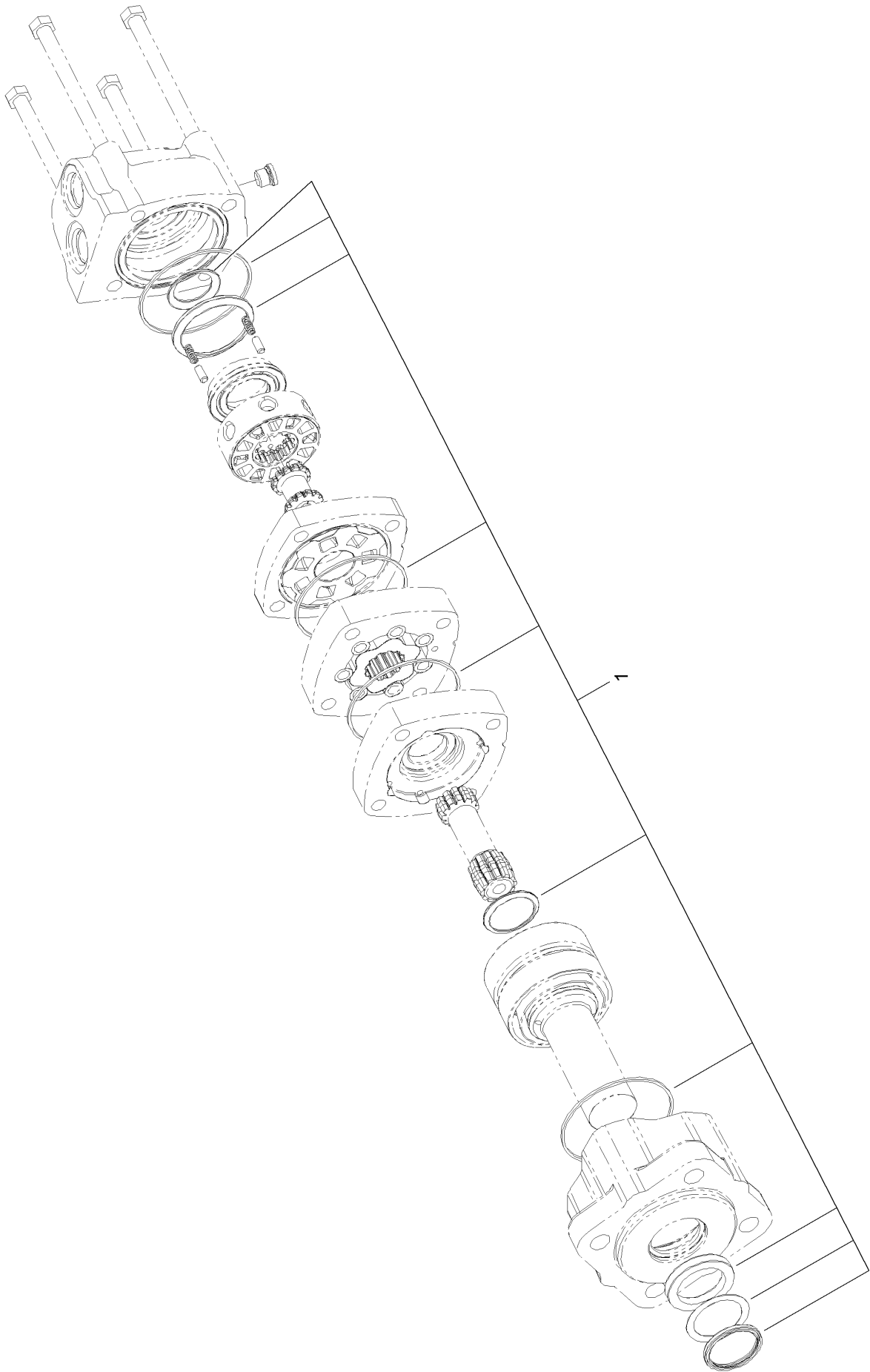
# Frame Assembly



## Frame Assembly (continued)

<i>Ref.</i>	<i>Part Number</i>	<i>Qty.</i>	<i>Description</i>	<i>Ref.</i>	<i>Part Number</i>	<i>Qty.</i>	<i>Description</i>
1	105-0369	1	Nut-Crownlock	15	32120-84	1	Ring-Snap, External
2	110-4614	1	Screw-HH	17	AU188974A1	1	HYD Motor ASM
3	125-8501	2	Pin-Mounting	18	AU541857R92	1	Idler Bearing And Sprocket ASM
5	127-1035	1	Frame ASM	19	AUH114140	1	Spacer-Sprocket, Idler
5:2	125-6670	1	Decal-Danger, Entanglement	20	AUH230243	2	Pin-Clevis
5:3	125-6671	1	Decal-Danger, Underground Hazard	21	AUH32292	2	Pin-Hair
5:4	125-8175	1	Decal-Grease	22	AUH413302	3	Spacer
6	127-1038	1	Cover ASM	23	AUH415554	1	Sprocket-Headshaft
6:2	125-6686	1	Decal-Warning, Chain	24	AUH415562	1	Spacer
7	AU230-4218	2	Nut-Lock, Hex	25	AUH415604	1	Key
8	323-6	1	Screw-HH	26	AUH426809	2	Washer-Flat
9	AU426-556	3	Bolt	27	AUH660175-03	1	Arm-Mounting, RH
10	AU426-824	2	Screw-HH	28	AUH660183-03	1	Arm-Mounting, LH
11	AU495-21069	2	Washer-Flat	29	AUH660217	1	Sprocket-Drive
12	3253-21	1	Washer-Lock	30	AUH758862	1	Chain-68P
13	3256-23	3	Washer-Flat	31	32152-1	1	Nut-Lock, Cone
14	3256-24	1	Washer-Flat	32	3272-11	2	Pin-Cotter
				33	302-2	2	Fitting-Grease

# Hydraulic Motor Assembly No. AU188974A1



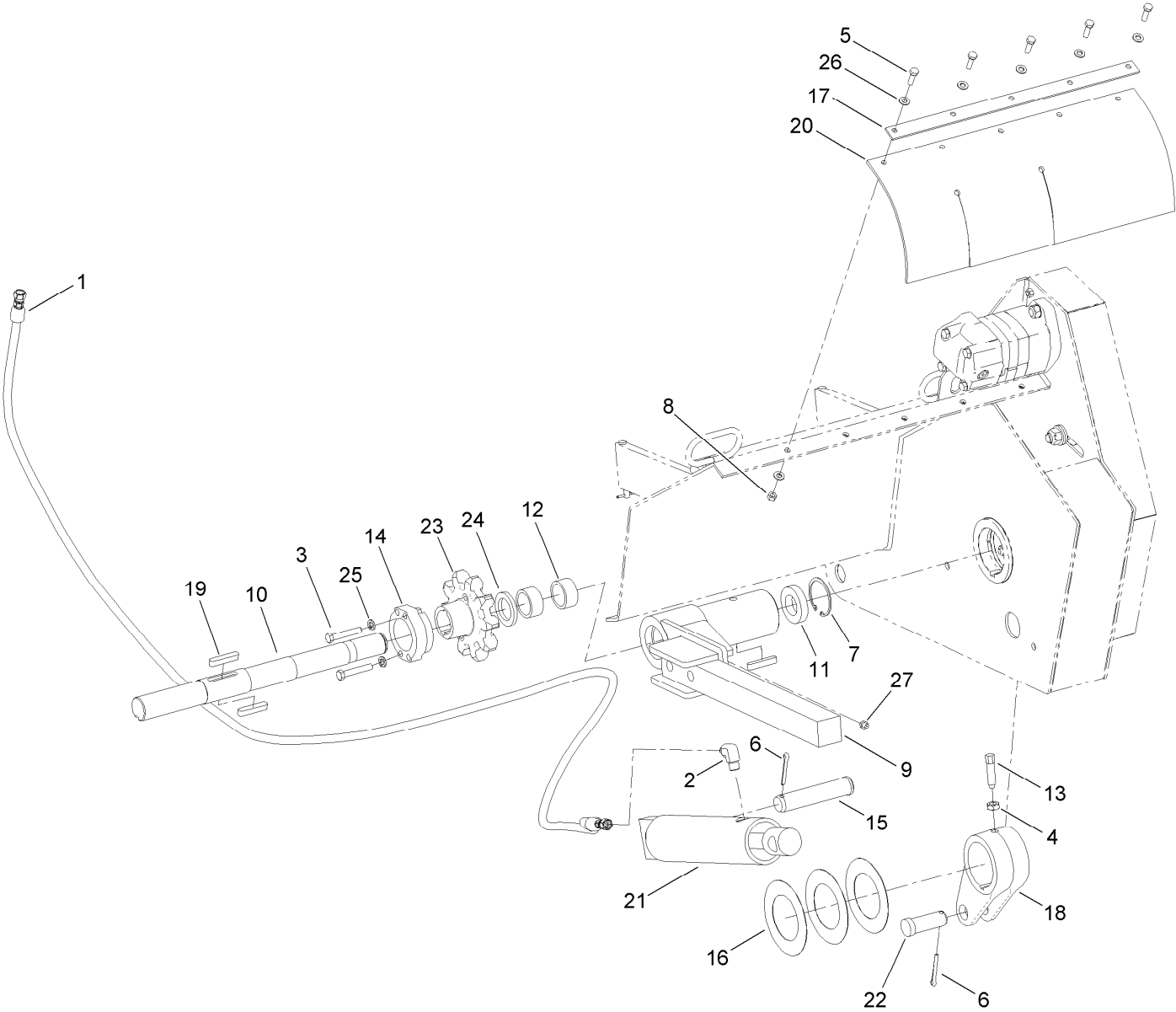
# Hydraulic Motor Assembly No. AU188974A1 (continued)

---

<i>Ref.</i>	<i>Part Number</i>	<i>Qty.</i>	<i>Description</i>
1	127-8421	1	Seal Kit

---

# Boom Mount and Drive Shaft Assembly



## Boom Mount and Drive Shaft Assembly (continued)

<i>Ref.</i>	<i>Part Number</i>	<i>Qty.</i>	<i>Description</i>	<i>Ref.</i>	<i>Part Number</i>	<i>Qty.</i>	<i>Description</i>
1	127-1067	1	HYD Hose ASM	15	AUH257048	1	Pin
2	01-201-0530	1	Fitting-Elbow, 90 DEG	16	AUH261834	3	Shim
3	323-45	2	Screw-HH	17	AUH314237-03	1	Strip-Back
4	AU425-158	1	Nut	18	AUH413492-03	1	Crank (Boom Cylinder)
5	AU426-516	5	Screw-HH	19	AUH413625	3	Key
6	AU432-1628	2	Pin-Cotter	20	AUH426718	1	Flap-Dirt
7	32120-22	1	Ring-Snap, Internal	21	AUH504076	1	HYD Cylinder ASM
8	32152-1	5	Nut-Lock, Cone	22	AUH65011	1	Pin-Clevis
9	AU106541-03	1	Mount-Boom	23	AUH69773	1	Sprocket
10	AU106634	1	Shaft-Drive, Trencher	24	AUH758854	1	Seal-Oil
11	AU38742	1	Bearing	25	3253-21	2	Washer-Lock
12	AUF7356	2	Bearing-Needle	26	3256-23	10	Washer-Flat
13	AUH33746	1	Screw-Set, Dog Point	27	302-2	1	Fitting-Grease
14	AUH69930	1	Hub				



**Count on it.**