



Count on it.

Parts Catalog

Hydra Borer

Pro Sneak 365 Vibratory Plow

Model No. 25421

Model No. 25421E



Ordering Replacement Parts

To order replacement parts, please supply the part number, the quantity, and the description of each part desired.

Understanding Reference Numbers

Each identified part in an illustration has a reference number. The reference number for a part also appears in the parts list, along with other information about the part.

This catalog uses two special reference number formats, one to indicate parts in a service assembly and another to indicate the quantity of a given part in an illustration.

Service Assembly Reference Numbers

Parts in service assemblies have reference numbers in the form a:b. The a represents the reference number of the entire service assembly and the b represents a sequential number unique to each part within the service assembly.

For example, a wheel assembly might be identified by reference number 6, the tire by 6:1, the valve by 6:2, and the wheel by 6:3. When you order the assembly identified by reference number 6, you receive all parts identified by reference numbers 6:1, 6:2, and 6:3. However, you may also order any part individually. Reference numbers of this type appear in illustration and in parts lists.

Reference Numbers Indicating Quantity

In an illustration, if a reference number indicates more than one part, the reference number has the form nX y. The n represents the quantity of the part, the X is the multiplication symbol, and the y represents the reference number.

For example, in an illustration, the reference number 2X 37 means that two of the parts identified by reference number 37 are indicated.

List of Abbreviations

AR: as required

ASM: assembly

BBC: blade brake control

BHTF: button head thread forming

CARR: carriage

CCW: counter clockwise

CW: clockwise

DEG: degrees

DPA: Dual Point Adjustment

ECM: electronic control module

EXT: external

FH: flat head

GA: gauge

HD: heavy-duty

HF: hex flange

HH: hex head

HHF: hex head flange

HHFTF: hex head flange thread forming

HJ: hex jam

HLH: hex lag head

HOC: height-of-cut

HP: high pressure

HSBH: hex socket button head

HSFH: hex socket flat head

HSH: hex socket head

HWH: hex washer head

HWHTF: hex washer head thread forming

HYD: hydraulic

LH: left hand

LP: low pressure

LPG: Liquefied Petroleum Gas

NI: nylon insert

NPTF: national pipe thread fine

PFH: phillips flat head

PPH: phillips pan head

PPHTF: phillips pan head thread forming

PRH: phillips round head

PTH: phillips truss head

PTO: power-take-off

RH: right hand

ROPS: roll-over protection system

RRB: rear roller brush

SFH: slotted fillister head

SHH: slotted hex head

SHWH: slotted hex washer head

SPH: slotted pan head

SQH: square head

SRH: slotted round head

STD: standard

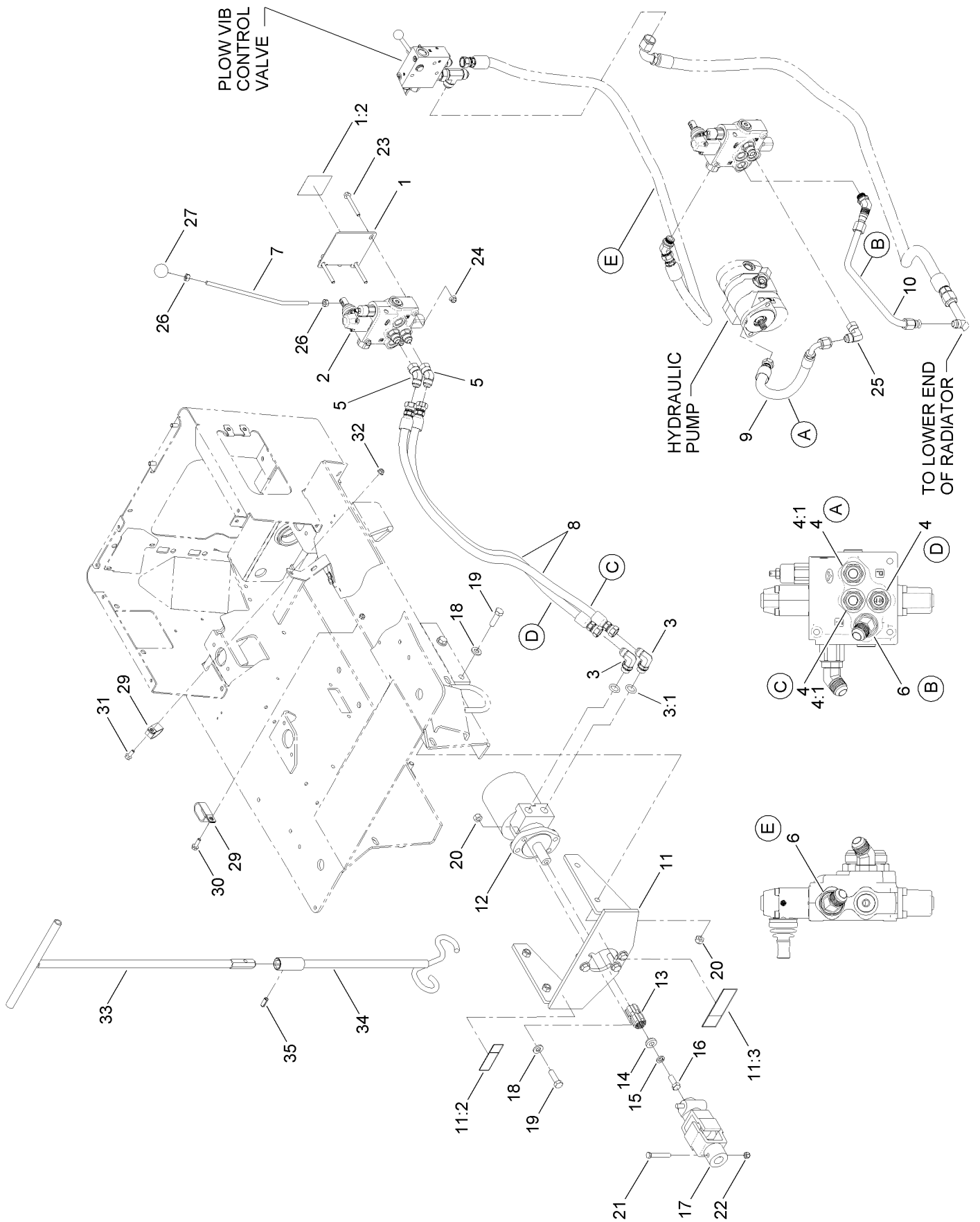
TAP: self tapping

TTH: torx truss head

Contents

Hydro Valve and Plumbing Assembly 4
Hydraulic Motor Assembly No. AUH673156 6
Hydraulic Tube Assembly 8

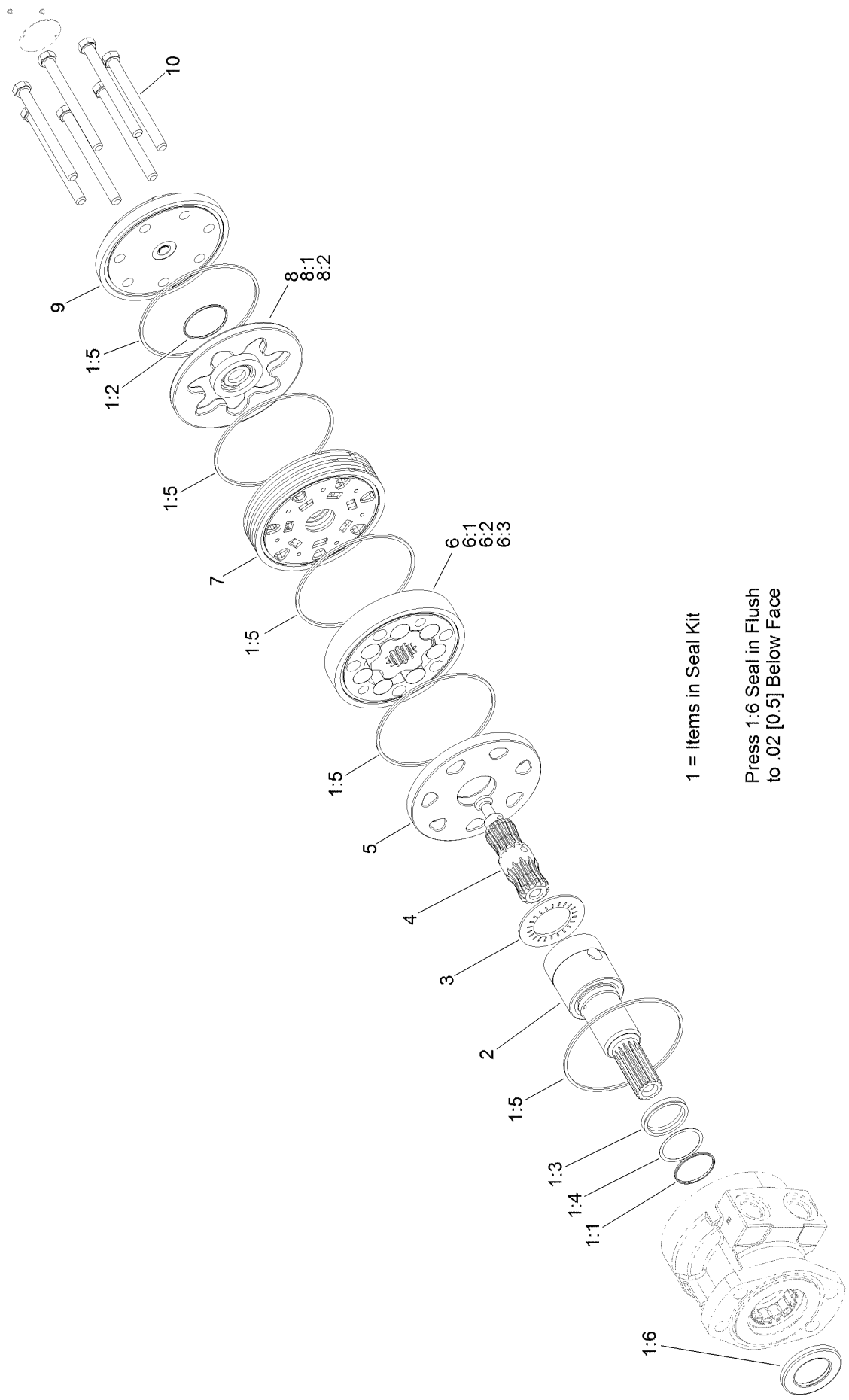
Hydro Valve and Plumbing Assembly



Hydro Valve and Plumbing Assembly (continued)

<i>Ref.</i>	<i>Part Number</i>	<i>Qty.</i>	<i>Description</i>	<i>Ref.</i>	<i>Part Number</i>	<i>Qty.</i>	<i>Description</i>
1	130-7352	1	Hydro Valve Bracket ASM	15	3253-7	1	Washer-Lock
1:2	125-8488	1	Decal-Hydrabore Direction	16	106-0378	1	Screw-HH
2	130-4310	1	Hydro Valve ASM	17	AUH511113	1	U-Joint ASM
3	353-370	2	Fitting-Elbow, 90 DEG	18	AU496-21053	8	Washer-Flat (Hardened)
3:1	237-80	1	O-Ring	19	121-1524	8	Screw-HH
4	353-385	3	Fitting-Straight	20	97-1206	8	Locknut
4:1	237-80	1	O-Ring	21	AU426-640	1	Screw-HH
5	127-0519	2	Fitting-Elbow, 45 DEG	22	97-1204	1	Nut-Hex
6	353-389	2	Fitting-Elbow, 45 DEG	23	33104-070	3	Screw-HHF
7	130-4349	1	Lever	24	104-3082	3	Nut-Lock, HHF
8	130-7375	2	HYD Hose ASM	25	94-7023	1	Adaptor
9	130-4312	1	HYD Hose ASM	26	33015-00	2	Nut-Hex
10	130-7359	1	HYD Tube ASM	27	130-7377	1	Knob-Round
11	127-1042	1	Mount ASM	29	2412-137	2	Clamp-R, Double
11:2	125-6671	1	Decal-Danger, Underground Hazard	30	3234-29	1	Screw-HHF
11:3	125-6681	1	Decal-Danger, Entanglement	31	3234-47	1	Screw-HHF
12	AUH673156	1	HYD Motor ASM	32	104-8300	2	Nut-Flange, NI
13	AUH312314	1	Adapter	33	106-7740-03	1	Handle-Tool, Guide
14	AUH435886	1	Retainer-Adapter	34	104-5988-03	1	Tool-Guide, Rod
				35	32121-41	1	Pin-Roll

Hydraulic Motor Assembly No. AUH673156

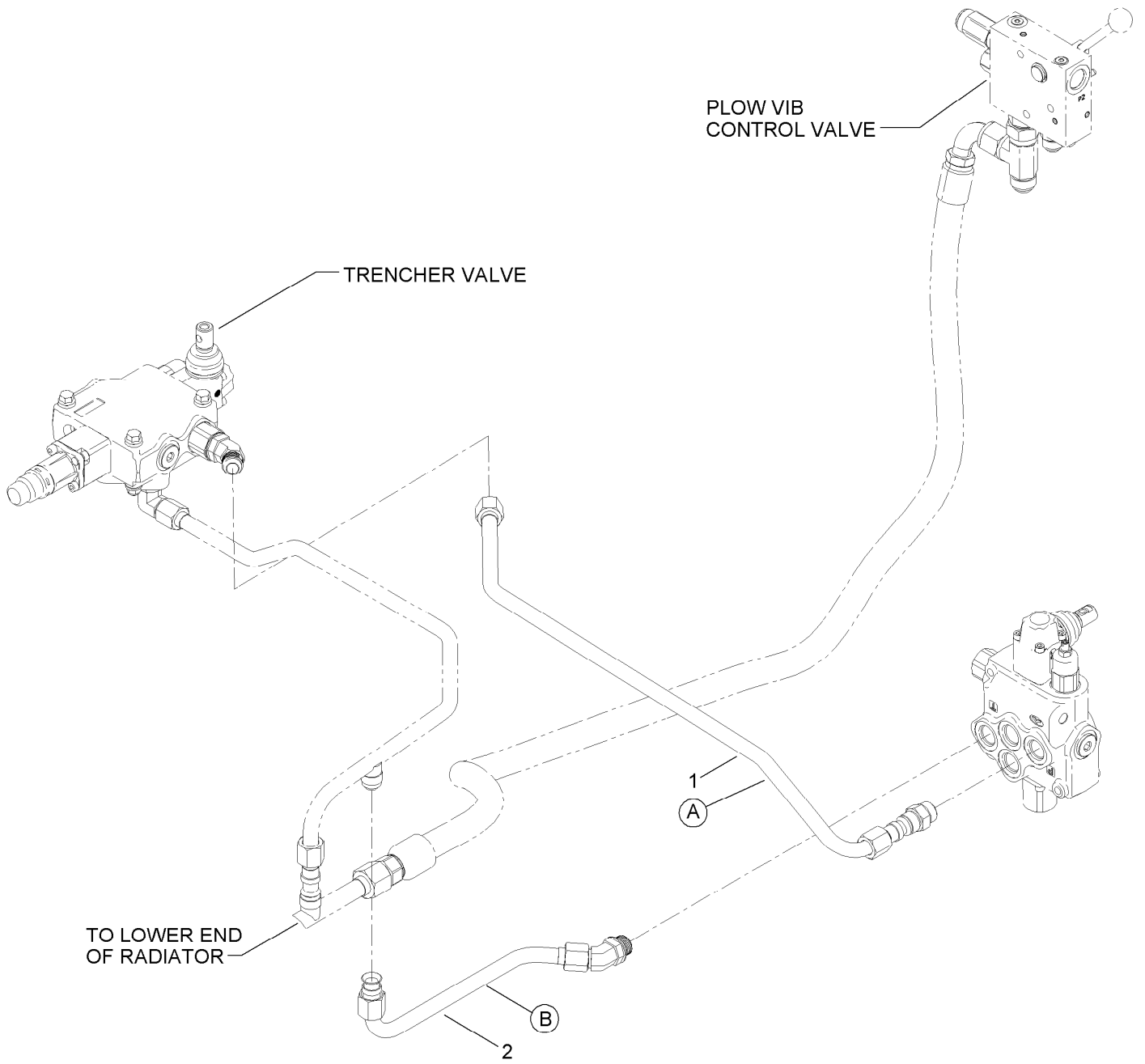


Hydraulic Motor Assembly No. AUH673156 (continued)

<i>Ref.</i>	<i>Part Number</i>	<i>Qty.</i>	<i>Description</i>	<i>Ref.</i>	<i>Part Number</i>	<i>Qty.</i>	<i>Description</i>
1	112-8405	1	Seal Kit	6	76-0970	1	Rotor Set
1:1		1	Ring-Backup ●	6:1		1	Rotor ●
1:2		1	Seal-Commutator ●	6:2		7	Vane ●
1:3		1	Seal-Shaft ●	6:3		1	Stator ●
1:4		1	Washer-Backup ●	7	92-9755	1	Manifold
1:5		5	Ring-Seal ●	8	106-1982	1	Commutator ASM
1:6		1	Seal-Dirt And Water ●	8:1		1	Commutator ●
2		1	Shaft-Coupling ●	8:2		1	Ring-Commutator ●
3	76-0850	1	Bearing-Thrust	9	76-0940	1	End Cover ASM
4	76-0960	1	Link-Drive	10		7	Bolt-Special ●
5	92-9754	1	Plate-Wear				

● Not serviced separately

Hydraulic Tube Assembly



Hydraulic Tube Assembly (continued)

<i>Ref.</i>	<i>Part Number</i>	<i>Qty.</i>	<i>Description</i>
1	130-7358	1	HYD Tube ASM
2	130-7357	1	HYD Tube ASM

Notes:

Notes:



Count on it.