



**Count on it.**

Form No. 3382-744 Rev A

# Parts Catalog

## Hydra Borer

### Pro Sneak 365 Vibratory Plow

Model No. 25421

Model No. 25421E



# Ordering Replacement Parts

To order replacement parts, please supply the part number, the quantity, and the description of each part desired.

## Understanding Reference Numbers

Each identified part in an illustration has a reference number. The reference number for a part also appears in the parts list, along with other information about the part.

This catalog uses two special reference number formats, one to indicate parts in a service assembly and another to indicate the quantity of a given part in an illustration.

## Service Assembly Reference Numbers

Parts in service assemblies have reference numbers in the form a:b. The a represents the reference number of the entire service assembly and the b represents a sequential number unique to each part within the service assembly.

For example, a wheel assembly might be identified by reference number 6, the tire by 6:1, the valve by 6:2, and the wheel by 6:3. When you order the assembly identified by reference number 6, you receive all parts identified by reference numbers 6:1, 6:2, and 6:3. However, you may also order any part individually. Reference numbers of this type appear in illustration and in parts lists.

## Reference Numbers Indicating Quantity

In an illustration, if a reference number indicates more than one part, the reference number has the form nX y. The n represents the quantity of the part, the X is the multiplication symbol, and the y represents the reference number.

For example, in an illustration, the reference number 2X 37 means that two of the parts identified by reference number 37 are indicated.

# List of Abbreviations

**AR:** as required

**ASM:** assembly

**BBC:** blade brake control

**BHTF:** button head thread forming

**CARR:** carriage

**CCW:** counter clockwise

**CW:** clockwise

**DEG:** degrees

**DPA:** Dual Point Adjustment

**ECM:** electronic control module

**EXT:** external

**FH:** flat head

**GA:** gauge

**HD:** heavy-duty

**HF:** hex flange

**HH:** hex head

**HHF:** hex head flange

**HHFTF:** hex head flange thread forming

**HJ:** hex jam

**HLH:** hex lag head

**HOC:** height-of-cut

**HP:** high pressure

**HSBH:** hex socket button head

**HSFH:** hex socket flat head

**HSH:** hex socket head

**HWH:** hex washer head

**HWHTF:** hex washer head thread forming

**HYD:** hydraulic

**LH:** left hand

**LP:** low pressure

**LPG:** Liquefied Petroleum Gas

**NI:** nylon insert

**NPTF:** national pipe thread fine

**PFH:** phillips flat head

**PPH:** phillips pan head

**PPHTF:** phillips pan head thread forming

**PRH:** phillips round head

**PTH:** phillips truss head

**PTO:** power-take-off

**RH:** right hand

**ROPS:** roll-over protection system

**RRB:** rear roller brush

**SFH:** slotted fillister head

**SHH:** slotted hex head

**SHWH:** slotted hex washer head

**SPH:** slotted pan head

**SQH:** square head

**SRH:** slotted round head

**STD:** standard

**TAP:** self tapping

**TTH:** torx truss head

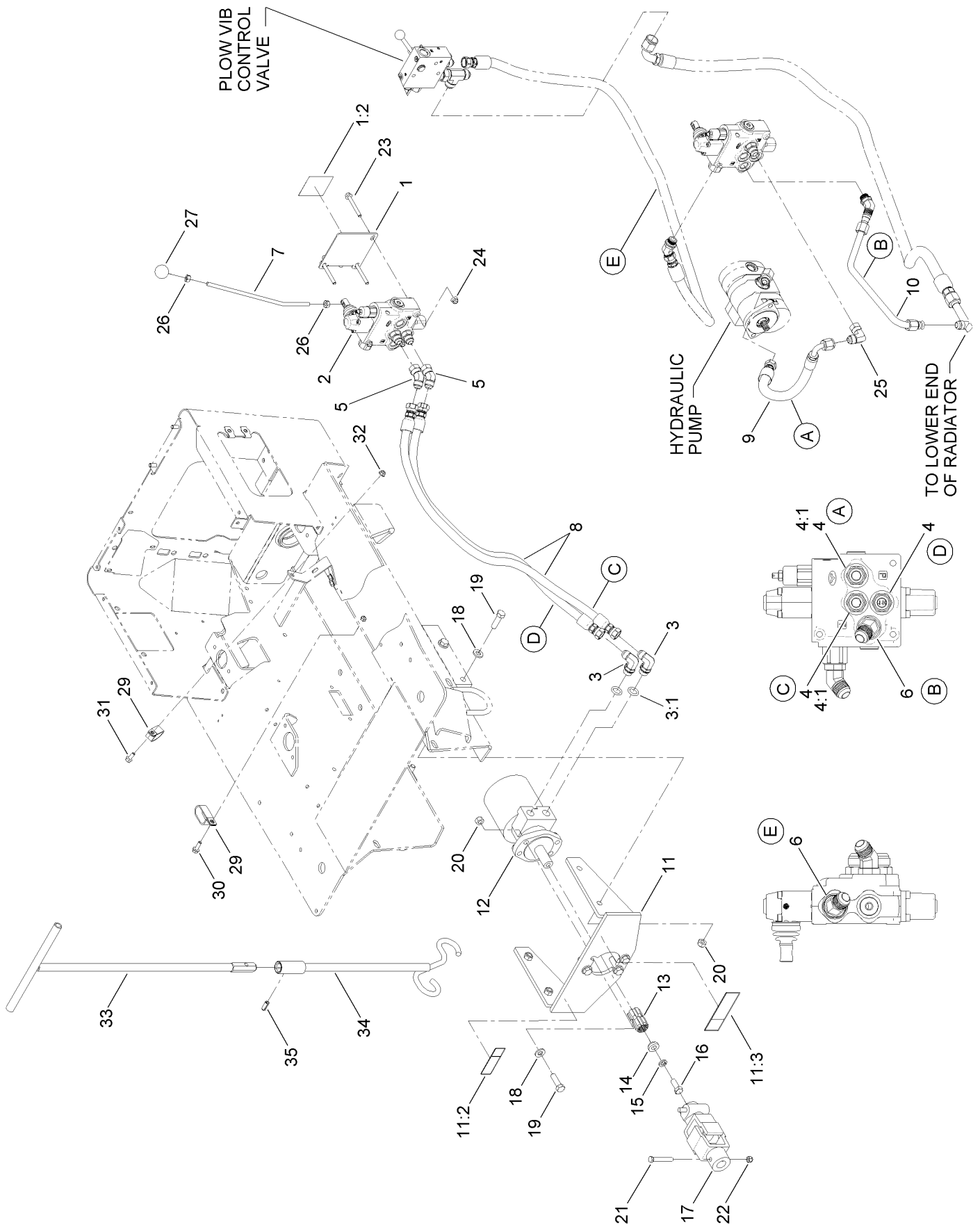
# Contents

Hydro Valve and Plumbing Assembly ..... 4

Hydraulic Motor Assembly No. AUH673156 ..... 6

Hydraulic Tube Assembly ..... 8

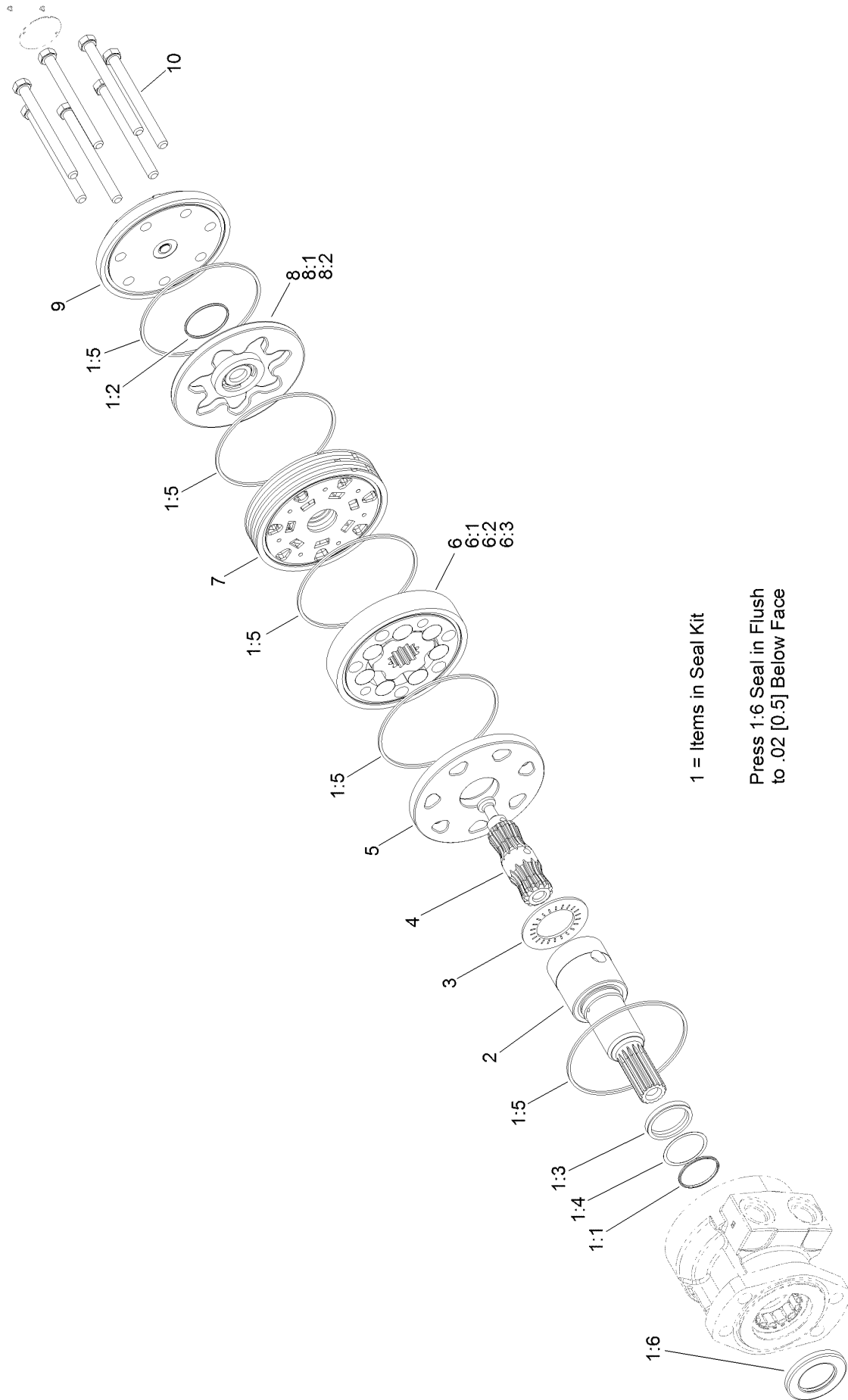
# Hydro Valve and Plumbing Assembly



## Hydro Valve and Plumbing Assembly (continued)

<i>Ref.</i>	<i>Part Number</i>	<i>Qty.</i>	<i>Description</i>	<i>Ref.</i>	<i>Part Number</i>	<i>Qty.</i>	<i>Description</i>
1	130-7352	1	Hydro Valve Bracket ASM	15	3253-7	1	Washer-Lock
1:2	125-8488	1	Decal-Hydrabore Direction	16	106-0378	1	Screw-HH
2	130-4310	1	Hydro Valve ASM	17	AUH511113	1	U-Joint ASM
3	353-370	2	Fitting-Elbow, 90 DEG	18	AU496-21053	8	Washer-Flat (Hardened)
3:1	237-80	1	O-Ring	19	121-1524	8	Screw-HH
4	353-385	3	Fitting-Straight	20	97-1206	8	Locknut
4:1	237-80	1	O-Ring	21	AU426-640	1	Screw-HH
5	127-0519	2	Fitting-Elbow, 45 DEG	22	97-1204	1	Nut-Hex
6	353-389	2	Fitting-Elbow, 45 DEG	23	33104-070	3	Screw-HHF
7	130-4349	1	Lever	24	104-3082	3	Nut-Lock, HHF
8	130-7375	2	HYD Hose ASM	25	94-7023	1	Adaptor
9	130-4312	1	HYD Hose ASM	26	33015-00	2	Nut-Hex
10	130-7359	1	HYD Tube ASM	27	130-7377	1	Knob-Round
11	127-1042	1	Mount ASM	29	2412-137	2	Clamp-R, Double
11:2	125-6671	1	Decal-Danger, Underground Hazard	30	3234-29	1	Screw-HHF
11:3	125-6681	1	Decal-Danger, Entanglement	31	3234-47	1	Screw-HHF
12	AUH673156	1	HYD Motor ASM	32	104-8300	2	Nut-Flange, NI
13	AUH312314	1	Adapter	33	106-7740-03	1	Handle-Tool, Guide
14	AUH435886	1	Retainer-Adapter	34	104-5988-03	1	Tool-Guide, Rod
				35	32121-41	1	Pin-Roll

# Hydraulic Motor Assembly No. AUH673156

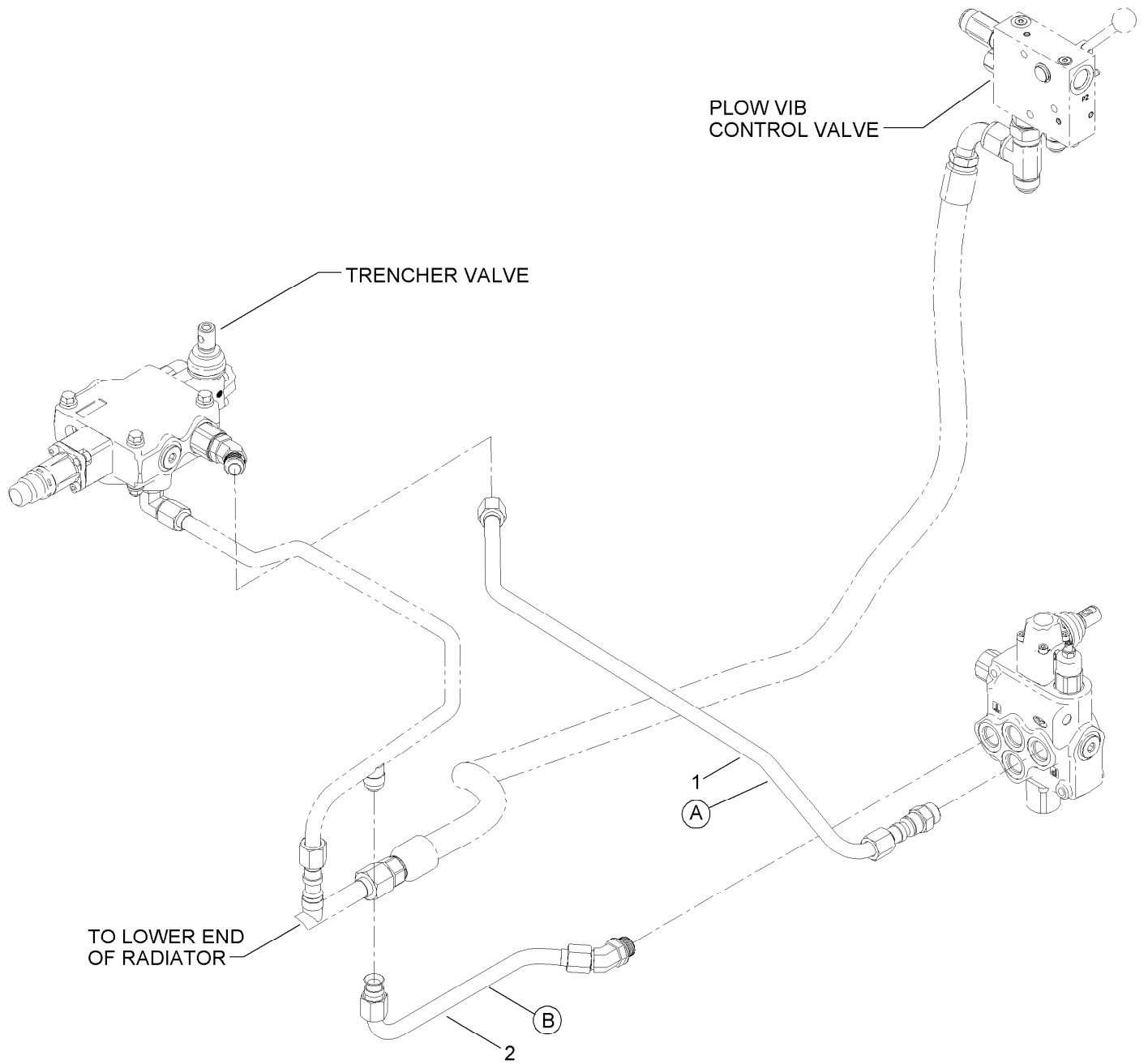


# Hydraulic Motor Assembly No. AUH673156 (continued)

<i>Ref.</i>	<i>Part Number</i>	<i>Qty.</i>	<i>Description</i>	<i>Ref.</i>	<i>Part Number</i>	<i>Qty.</i>	<i>Description</i>
1	112-8405	1	Seal Kit	6	76-0970	1	Rotor Set
1:1		1	Ring-Backup ●	6:1		1	Rotor ●
1:2		1	Seal-Commutator ●	6:2		7	Vane ●
1:3		1	Seal-Shaft ●	6:3		1	Stator ●
1:4		1	Washer-Backup ●	7	92-9755	1	Manifold
1:5		5	Ring-Seal ●	8	106-1982	1	Commutator ASM
1:6		1	Seal-Dirt And Water ●	8:1		1	Commutator ●
2		1	Shaft-Coupling ●	8:2		1	Ring-Commutator ●
3	76-0850	1	Bearing-Thrust	9	76-0940	1	End Cover ASM
4	76-0960	1	Link-Drive	10		7	Bolt-Special ●
5	92-9754	1	Plate-Wear				

● Not serviced separately

# Hydraulic Tube Assembly





## Hydraulic Tube Assembly (continued)

<i>Ref.</i>	<i>Part Number</i>	<i>Qty.</i>	<i>Description</i>
1	130-7358	1	HYD Tube ASM
2	130-7357	1	HYD Tube ASM

**Notes:**

**Notes:**



**Count on it.**