



Count on it.

Parts Catalog

CM-958H-SED Concrete Mixer

Model No. 68007—Serial No. 314000001 and Up



Ordering Replacement Parts

To order replacement parts, please supply the part number, the quantity, and the description of each part desired.

Understanding Reference Numbers

Each identified part in an illustration has a reference number. The reference number for a part also appears in the parts list, along with other information about the part.

This catalog uses two special reference number formats, one to indicate parts in a service assembly and another to indicate the quantity of a given part in an illustration.

Service Assembly Reference Numbers

Parts in service assemblies have reference numbers in the form a:b. The a represents the reference number of the entire service assembly and the b represents a sequential number unique to each part within the service assembly.

For example, a wheel assembly might be identified by reference number 6, the tire by 6:1, the valve by 6:2, and the wheel by 6:3. When you order the assembly identified by reference number 6, you receive all parts identified by reference numbers 6:1, 6:2, and 6:3. However, you may also order any part individually. Reference numbers of this type appear in illustration and in parts lists.

Reference Numbers Indicating Quantity

In an illustration, if a reference number indicates more than one part, the reference number has the form nX y. The n represents the quantity of the part, the X is the multiplication symbol, and the y represents the reference number.

For example, in an illustration, the reference number 2X 37 means that two of the parts identified by reference number 37 are indicated.

List of Abbreviations

AR: as required

ASM: assembly

BBC: blade brake control

BHTF: button head thread forming

CARR: carriage

CCW: counter clockwise

CW: clockwise

DEG: degrees

DPA: Dual Point Adjustment

ECM: electronic control module

EXT: external

FH: flat head

GA: gauge

HD: heavy-duty

HF: hex flange

HH: hex head

HHF: hex head flange

HHFTF: hex head flange thread forming

HJ: hex jam

HLH: hex lag head

HOC: height-of-cut

HP: high pressure

HSBH: hex socket button head

HSFH: hex socket flat head

HSH: hex socket head

HWH: hex washer head

HWHTF: hex washer head thread forming

HYD: hydraulic

LH: left hand

LP: low pressure

LPG: Liquefied Petroleum Gas

NI: nylon insert

NPTF: national pipe thread fine

PFH: phillips flat head

PPH: phillips pan head

PPHTF: phillips pan head thread forming

PRH: phillips round head

PTH: phillips truss head

PTO: power-take-off

RH: right hand

ROPS: roll-over protection system

RRB: rear roller brush

SFH: slotted fillister head

SHH: slotted hex head

SHWH: slotted hex washer head

SPH: slotted pan head

SQH: square head

SRH: slotted round head

STD: standard

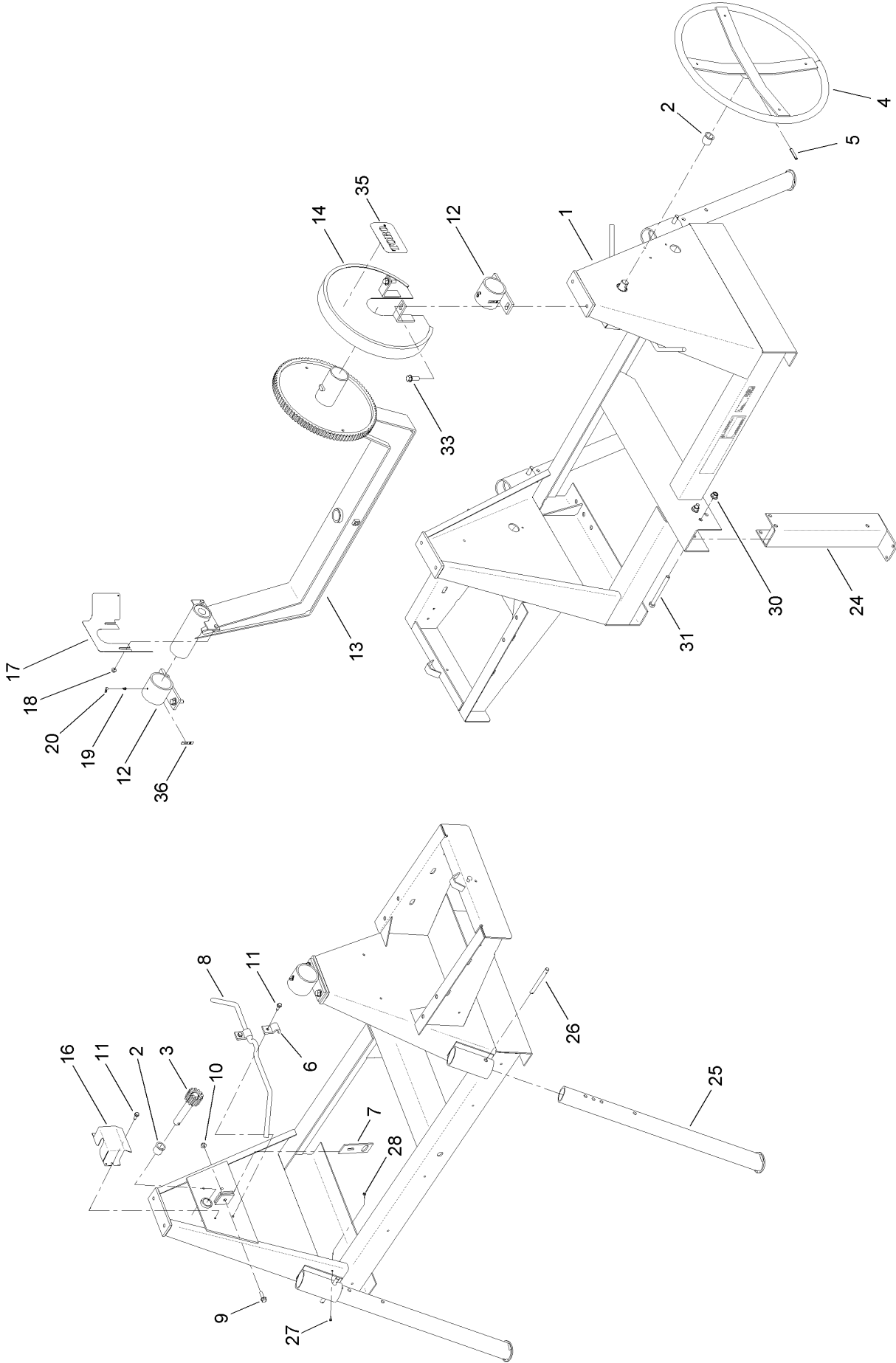
TAP: self tapping

TTH: torx truss head

Contents

Main Frame Assembly	4
Axle Assembly	6
Hub Assembly No. 125-8171	8
Engine and Belt Assembly	10
Drum Assembly	12
Cowl Assembly	14
Attachments and Accessories	16

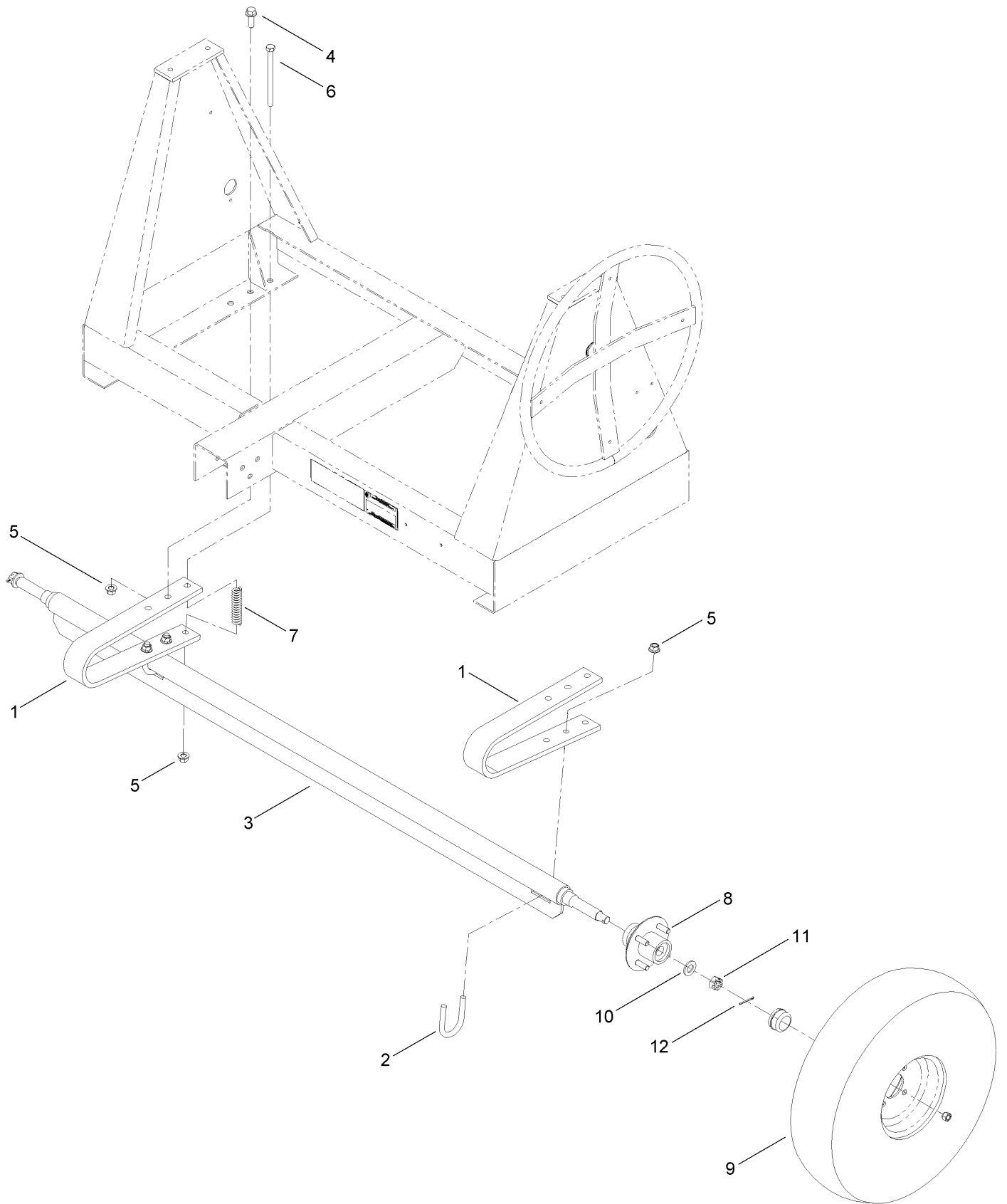
Main Frame Assembly



Main Frame Assembly (continued)

<i>Ref.</i>	<i>Part Number</i>	<i>Qty.</i>	<i>Description</i>	<i>Ref.</i>	<i>Part Number</i>	<i>Qty.</i>	<i>Description</i>
1	125-8685-03	1	Frame	17	ST27144-03	1	Guard-Pinion
2	ST32032	2	Bushing-Nylon	18	104-8300	1	Nut-Flange, NI
3	ST22029	1	Shaft-Tilt	19	ST46042	2	Fitting-Grease
4	ST22096-03	1	Handwheel	20	ST47001	2	Cap-Plug
5	32121-27	1	Pin-Roll	24	ST21875-03	1	Post-Foot
6	ST27559-03	2	Bracket-Handle	25	ST21874-03	2	Leg-Stabilizer
7	ST27619-03	1	Dog-Brake	26	ST80039	2	Pin-Clevis, Lanyard
8	127-5593	1	Handle-Brake	27	3290-500	2	Screw-PPH
9	3234-24	1	Screw-HHF	28	3296-2	2	Nut-Lock, NI
10	104-8301	1	Nut-Flange, NI	30	99-5107	2	Nut-Lock
11	701243	4	Screw-HWHTF	31	325-22	2	Screw-HH
12	ST24349-03	2	Trunnion	33	ST80031	4	Screw-HWH
13	125-6308	1	Yoke ASM	35	99-4693	1	Decal
14	ST27617-03	1	Guard-Brake, Upper	36	125-8175	2	Decal-Grease
16	ST27618-03	1	Guard-Brake, Lower				

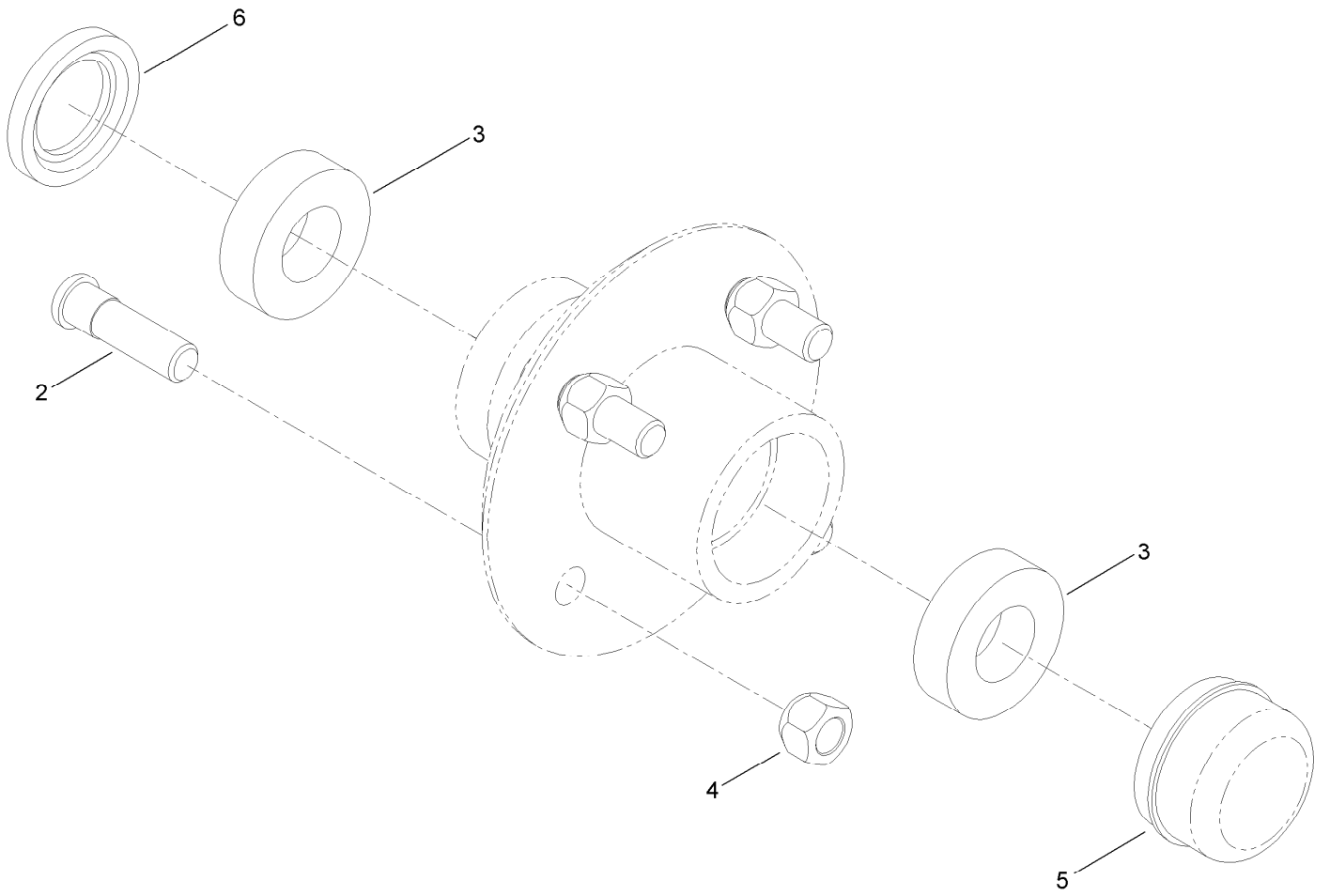
Axle Assembly



Axle Assembly (continued)

<i>Ref.</i>	<i>Part Number</i>	<i>Qty.</i>	<i>Description</i>	<i>Ref.</i>	<i>Part Number</i>	<i>Qty.</i>	<i>Description</i>
1	ST26971	2	Spring-Leaf	7	ST34972	2	Spring-Coil
2	ST26195	2	Bolt-U	8	125-8171	2	Hub ASM
3	ST21873-03	1	Axle-Spring	9	ST32307	2	Tire And Rim ASM
4	100-6116	4	Screw-HHF	10	3256-28	2	Washer-Flat
5	99-5107	10	Nut-Lock	11	ST80054	2	Nut
6	325-33	2	Screw-HH	12	3272-13	2	Pin-Cotter

Hub Assembly No. 125-8171

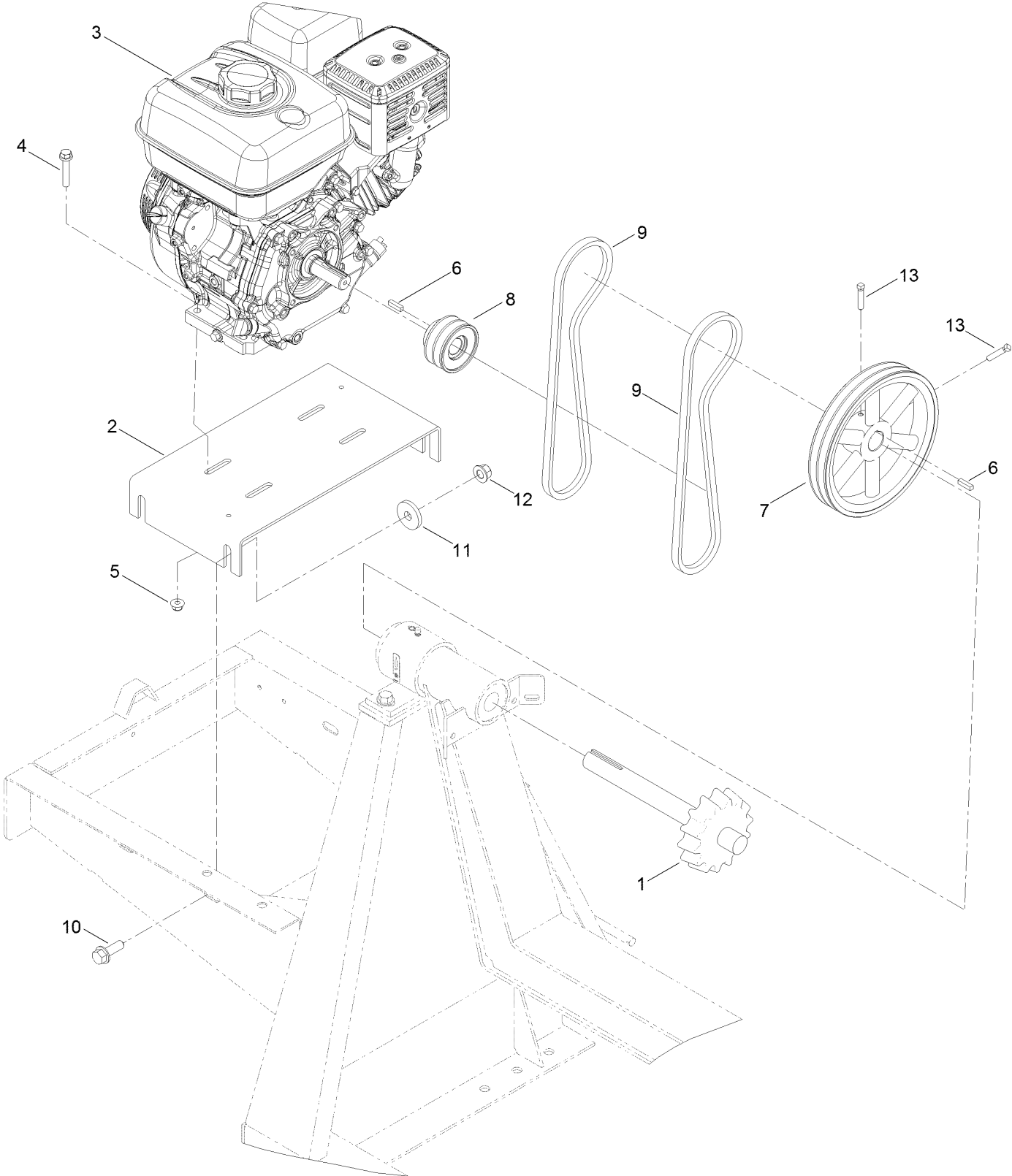


Hub Assembly No. 125-8171 (continued)

<i>Ref.</i>	<i>Part Number</i>	<i>Qty.</i>	<i>Description</i>
2	ST39190	4	Stud-Wheel
3	ST32233	2	Bearing-Roller
4	ST80045	4	Nut-Lug

<i>Ref.</i>	<i>Part Number</i>	<i>Qty.</i>	<i>Description</i>
5	ST34573	1	Cap-Dust
6	ST32052	1	Seal-Hub, Wheel

Engine and Belt Assembly

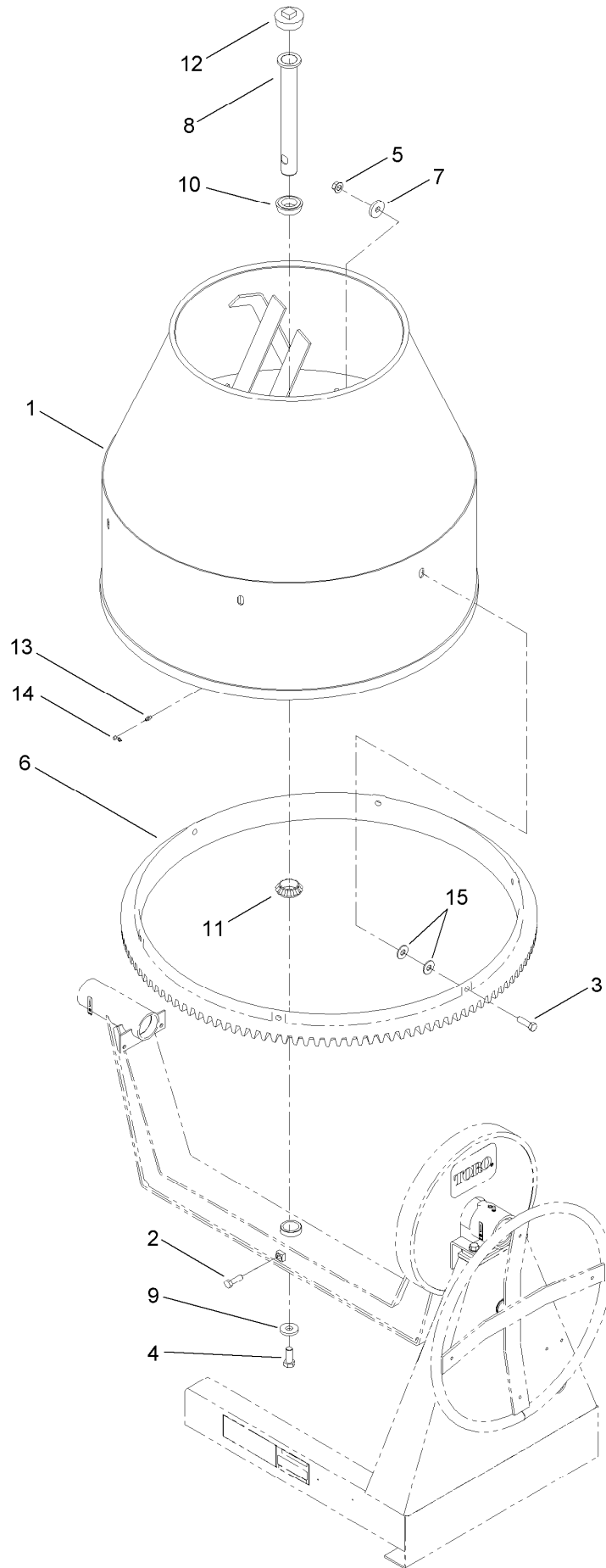


Engine and Belt Assembly (continued)

<i>Ref.</i>	<i>Part Number</i>	<i>Qty.</i>	<i>Description</i>	<i>Ref.</i>	<i>Part Number</i>	<i>Qty.</i>	<i>Description</i>
1	ST21487	1	Shaft-Drive	8	ST34984	1	Sheave
2	127-7579-03	1	Base-Engine, 95Cm	9	127-0075	2	Belt-V
3	125-4812	1	Engine-Honda, Gx240 ●	10	100-6116	4	Screw-HHF
4	108-3742	4	Screw-HHF	11	ST26326	4	Washer-Flat
5	104-8301	4	Nut-Flange, NI	12	99-5107	4	Nut-Lock
6	5-7280	2	Key	13	909546	2	Screw-Set
7	ST34986-03	1	Sheave				

● Obtain parts from www.honda-engines.com

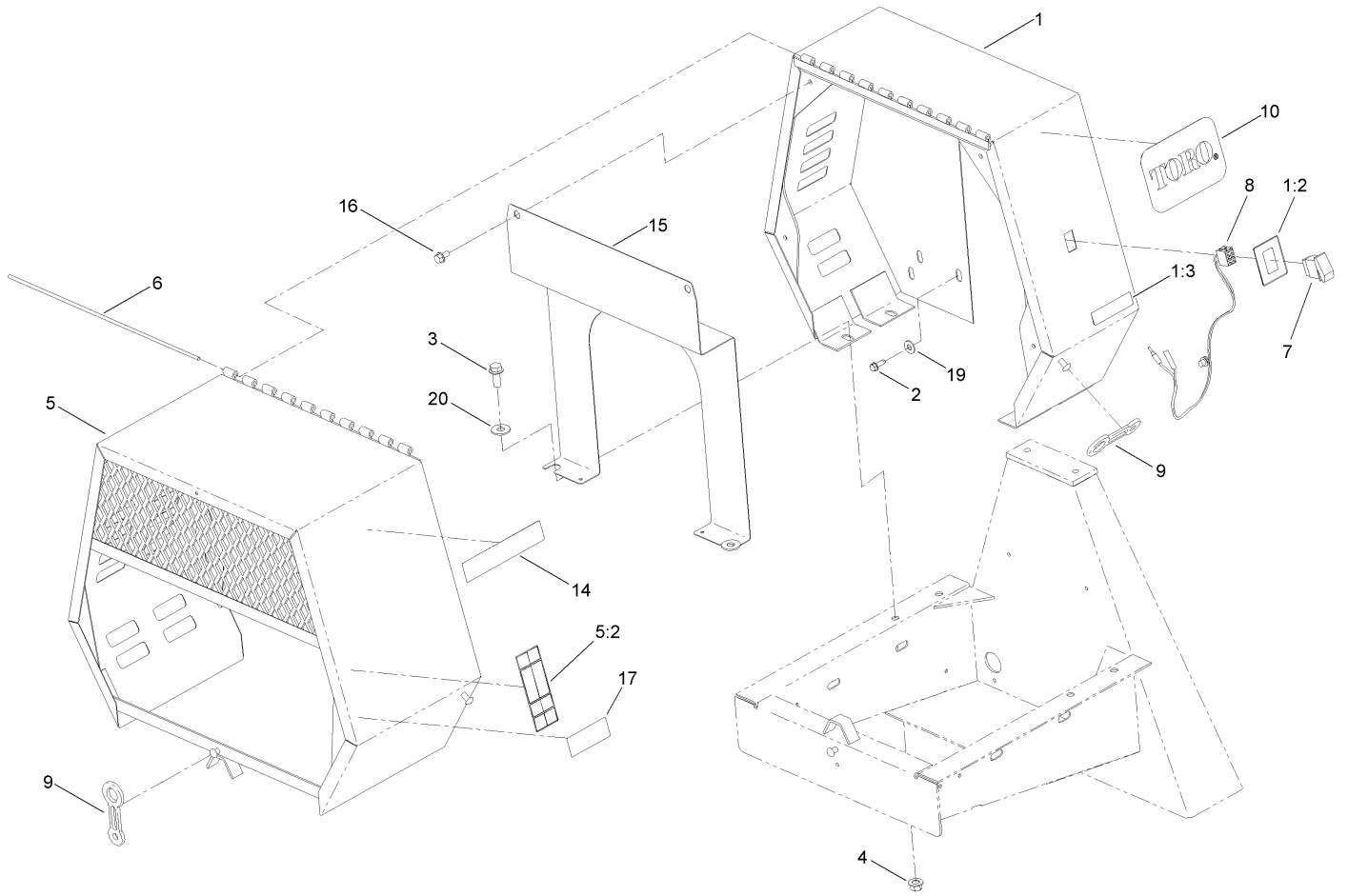
Drum Assembly



Drum Assembly (continued)

<i>Ref.</i>	<i>Part Number</i>	<i>Qty.</i>	<i>Description</i>	<i>Ref.</i>	<i>Part Number</i>	<i>Qty.</i>	<i>Description</i>
1	125-6306-01	1	Drum	9	ST27413	1	Washer-Flat
2	325-6	1	Screw-HH	10	ST32086	1	Bearing
3	325-7	6	Screw-HH	11	ST32161	1	Bearing-Roller
4	327-4	1	Screw-HH	12	ST46022	1	Plug
5	99-5107	6	Nut-Lock	13	ST46057	1	Fitting
6	ST26317-01	1	Gear-Ring	14	ST47001	1	Cap-Plug
7	ST26326	6	Washer-Flat	15	3256-6	12	Washer-Flat
8	ST27267	1	Spindle				

Cowl Assembly



Cowl Assembly (continued)

<i>Ref.</i>	<i>Part Number</i>	<i>Qty.</i>	<i>Description</i>	<i>Ref.</i>	<i>Part Number</i>	<i>Qty.</i>	<i>Description</i>
1	127-2811	1	Stationary Cowl ASM	8	125-4877	1	Harness-Wire, Mixer
1:2	125-4940	1	Decal-Stop, Engine	9	ST47182	3	Latch-Rubber
1:3	117-2718	1	Decal-Arrester, Spark	10	67-7320	2	Decal
2	701243	2	Screw-HWHTF	14	125-4937	2	Decal
3	3234-38	4	Screw-HHF	15	125-8218-03	1	Plate-Engine
4	99-5107	4	Nut-Lock	16	110-9380	2	Screw-HWH
5	127-1685	1	Movable Cowl ASM	17	125-4942	1	Decal
5:2	125-4939	1	Decal-Warning	19	3256-4	2	Washer-Flat
6	ST44368	1	Pin	20	3256-6	2	Washer-Flat
7	95-8999	1	Switch				

Attachments and Accessories

For 68007 CM-958H-SED Concrete Mixer

Product Name

Model/Part

Trailer Light Kit..... 68063

Notes:

Notes:

Notes:



Count on it.