



Count on it.

Parts Catalog

MMX-1158H-S Mortar Mixer

Model No. 68023C—Serial No. 314000001 and Up



Ordering Replacement Parts

To order replacement parts, please supply the part number, the quantity, and the description of each part desired.

Understanding Reference Numbers

Each identified part in an illustration has a reference number. The reference number for a part also appears in the parts list, along with other information about the part.

This catalog uses two special reference number formats, one to indicate parts in a service assembly and another to indicate the quantity of a given part in an illustration.

Service Assembly Reference Numbers

Parts in service assemblies have reference numbers in the form a:b. The a represents the reference number of the entire service assembly and the b represents a sequential number unique to each part within the service assembly.

For example, a wheel assembly might be identified by reference number 6, the tire by 6:1, the valve by 6:2, and the wheel by 6:3. When you order the assembly identified by reference number 6, you receive all parts identified by reference numbers 6:1, 6:2, and 6:3. However, you may also order any part individually. Reference numbers of this type appear in illustration and in parts lists.

Reference Numbers Indicating Quantity

In an illustration, if a reference number indicates more than one part, the reference number has the form nX y. The n represents the quantity of the part, the X is the multiplication symbol, and the y represents the reference number.

For example, in an illustration, the reference number 2X 37 means that two of the parts identified by reference number 37 are indicated.

List of Abbreviations

AR: as required

ASM: assembly

BBC: blade brake control

BHTF: button head thread forming

CARR: carriage

CCW: counter clockwise

CW: clockwise

DEG: degrees

DPA: Dual Point Adjustment

ECM: electronic control module

EXT: external

FH: flat head

GA: gauge

HD: heavy-duty

HF: hex flange

HH: hex head

HHF: hex head flange

HHFTF: hex head flange thread forming

HJ: hex jam

HLH: hex lag head

HOC: height-of-cut

HP: high pressure

HSBH: hex socket button head

HSFH: hex socket flat head

HSH: hex socket head

HWH: hex washer head

HWHTF: hex washer head thread forming

HYD: hydraulic

LH: left hand

LP: low pressure

LPG: Liquefied Petroleum Gas

NI: nylon insert

NPTF: national pipe thread fine

PFH: phillips flat head

PPH: phillips pan head

PPHTF: phillips pan head thread forming

PRH: phillips round head

PTH: phillips truss head

PTO: power-take-off

RH: right hand

ROPS: roll-over protection system

RRB: rear roller brush

SFH: slotted fillister head

SHH: slotted hex head

SHWH: slotted hex washer head

SPH: slotted pan head

SQH: square head

SRH: slotted round head

STD: standard

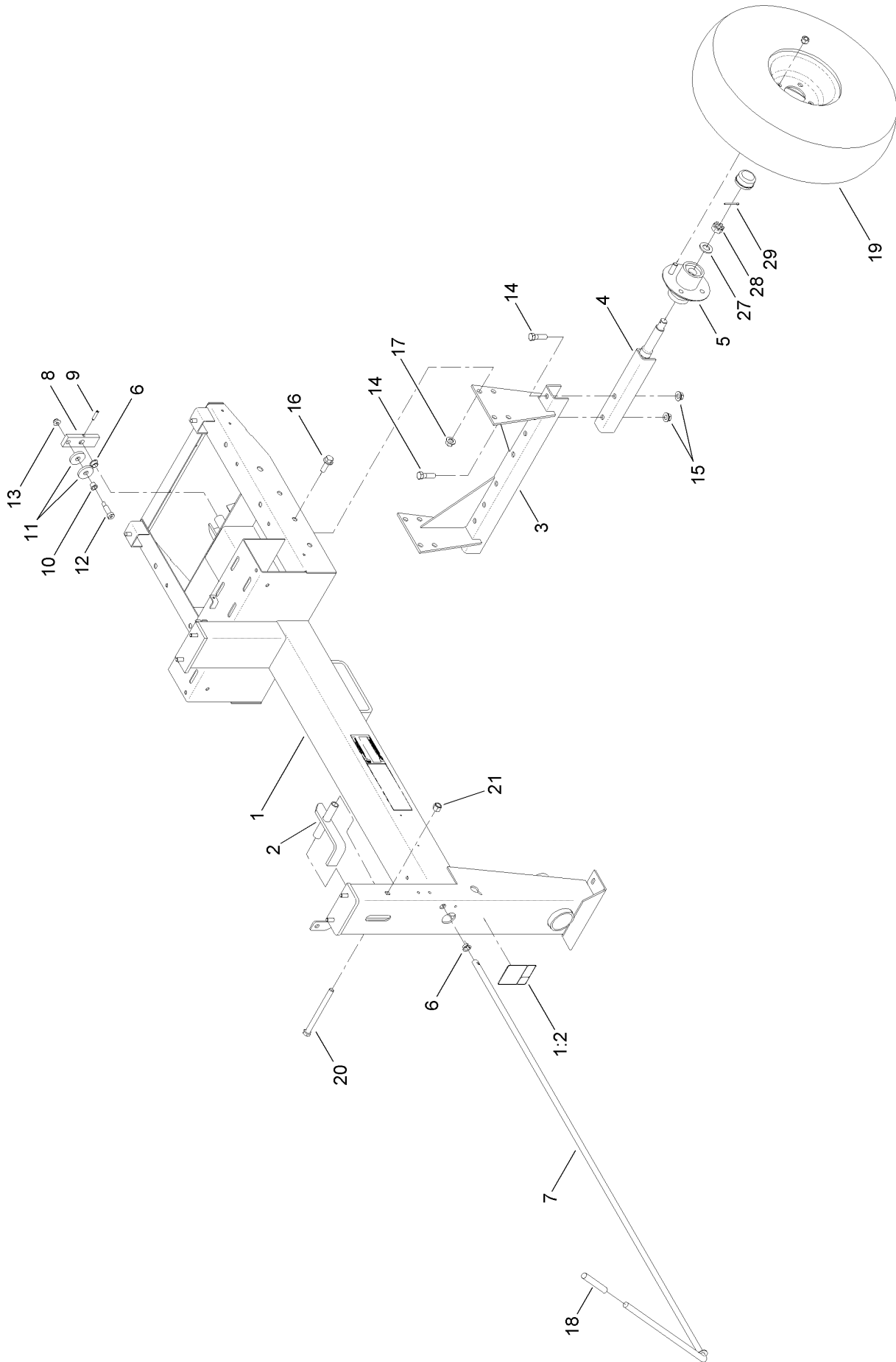
TAP: self tapping

TTH: torx truss head

Contents

Frame and Axle Assembly	4
Hub Assembly No. 125-8171	6
Drum, Paddle and Bearing Assembly	8
Engine and Belt Assembly	10
Pinion Assembly No. ST21471	12
Cowl Assembly	14
Trailer Lights Assembly	16
Attachments and Accessories	18

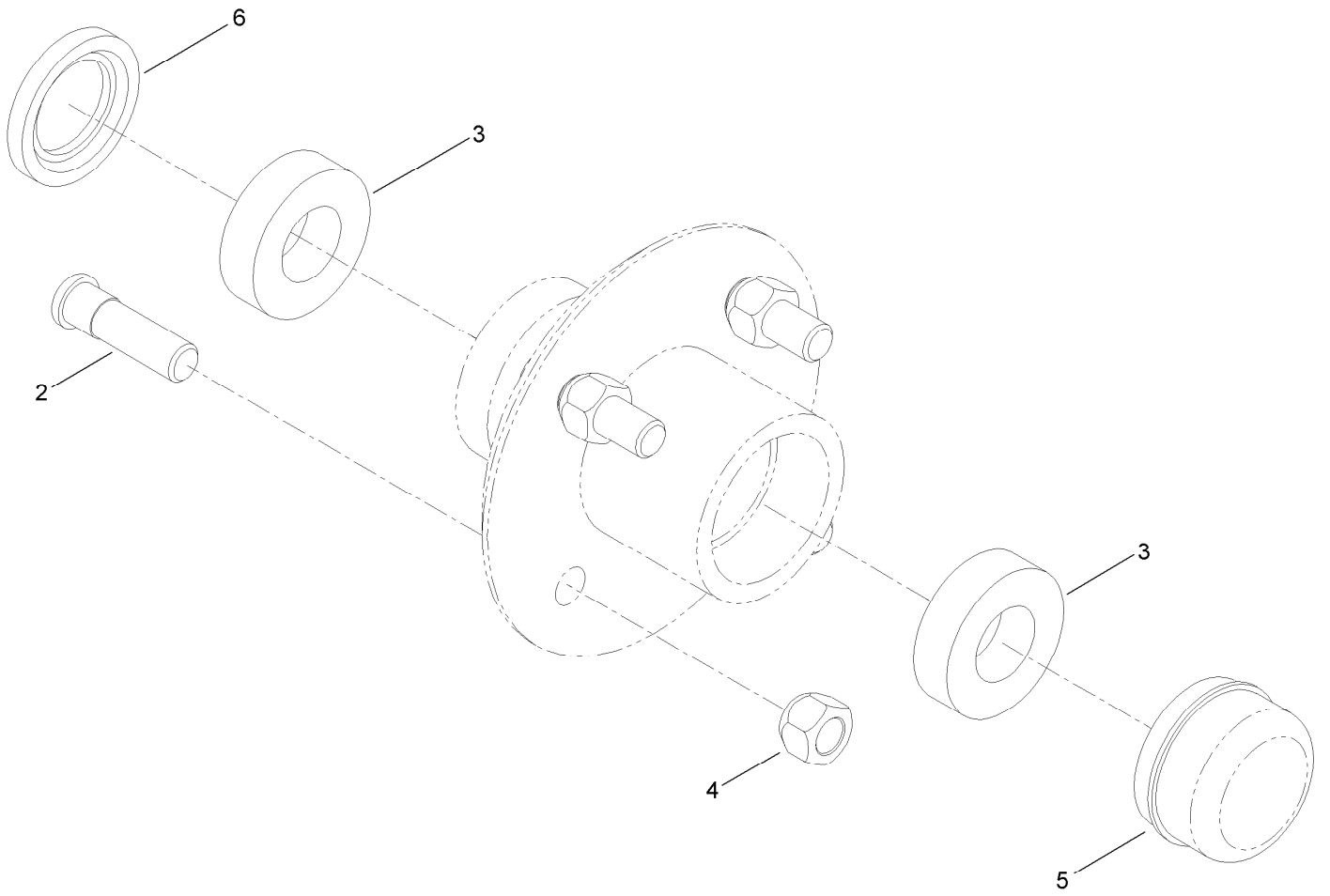
Frame and Axle Assembly



Frame and Axle Assembly (continued)

<i>Ref.</i>	<i>Part Number</i>	<i>Qty.</i>	<i>Description</i>	<i>Ref.</i>	<i>Part Number</i>	<i>Qty.</i>	<i>Description</i>
1	127-1693	1	Frame ASM	13	104-8301	1	Nut-Flange, NI
1:2	125-8216	1	Decal-Safety Chain, Towing	14	ST80536	4	Screw-HH
2	ST24027-03	1	Latch-Drum	15	32128-39	4	Nut-HHF
3	125-8219-03	1	Support-Axle	16	100-6116	4	Screw-HHF
4	ST22512-03	2	Axle-Half	17	99-5107	4	Nut-Lock
5	125-8171	2	Hub ASM	18	ST34687	1	Grip-Handle
6	ST32116	2	Bushing-Flange	19	ST32307	2	Tire And Rim ASM
7	ST39570-03	1	Lever-Clutch	20	325-33	1	Screw-HH
8	ST39446	1	Link-Clutch	21	3296-23	1	Nut-Lock, NI
9	32121-69	1	Pin-Spring	27	3256-28	2	Washer-Flat
10	ST32099	1	Bushing-Flange	28	ST80054	2	Nut
11	ST26326	2	Washer-Flat	29	3272-13	2	Pin-Cotter
12	ST81153	1	Screw-HSBH				

Hub Assembly No. 125-8171

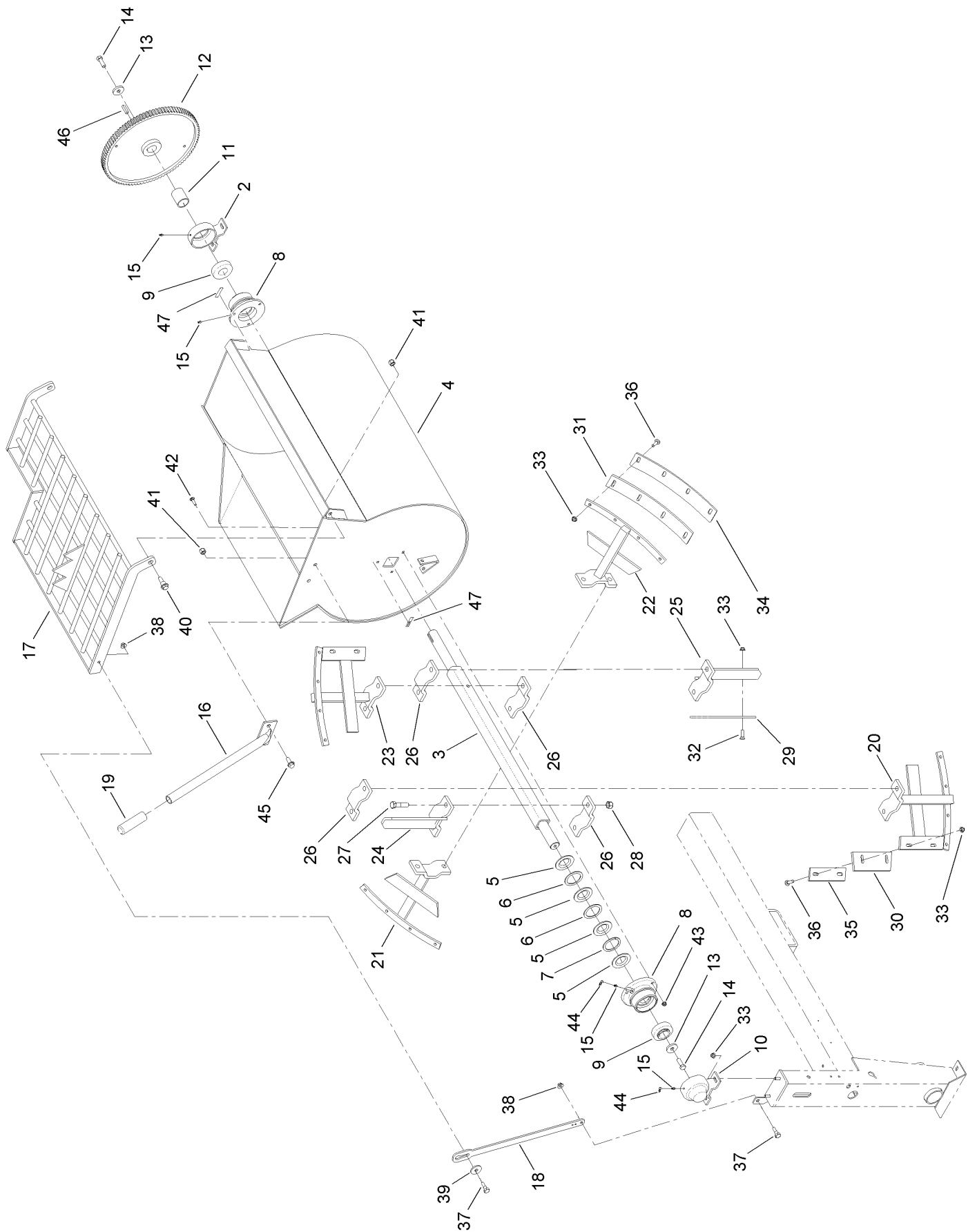


Hub Assembly No. 125-8171 (continued)

<i>Ref.</i>	<i>Part Number</i>	<i>Qty.</i>	<i>Description</i>
2	ST39190	4	Stud-Wheel
3	ST32233	2	Bearing-Roller
4	ST80045	4	Nut-Lug

<i>Ref.</i>	<i>Part Number</i>	<i>Qty.</i>	<i>Description</i>
5	ST34573	1	Cap-Dust
6	ST32052	1	Seal-Hub, Wheel

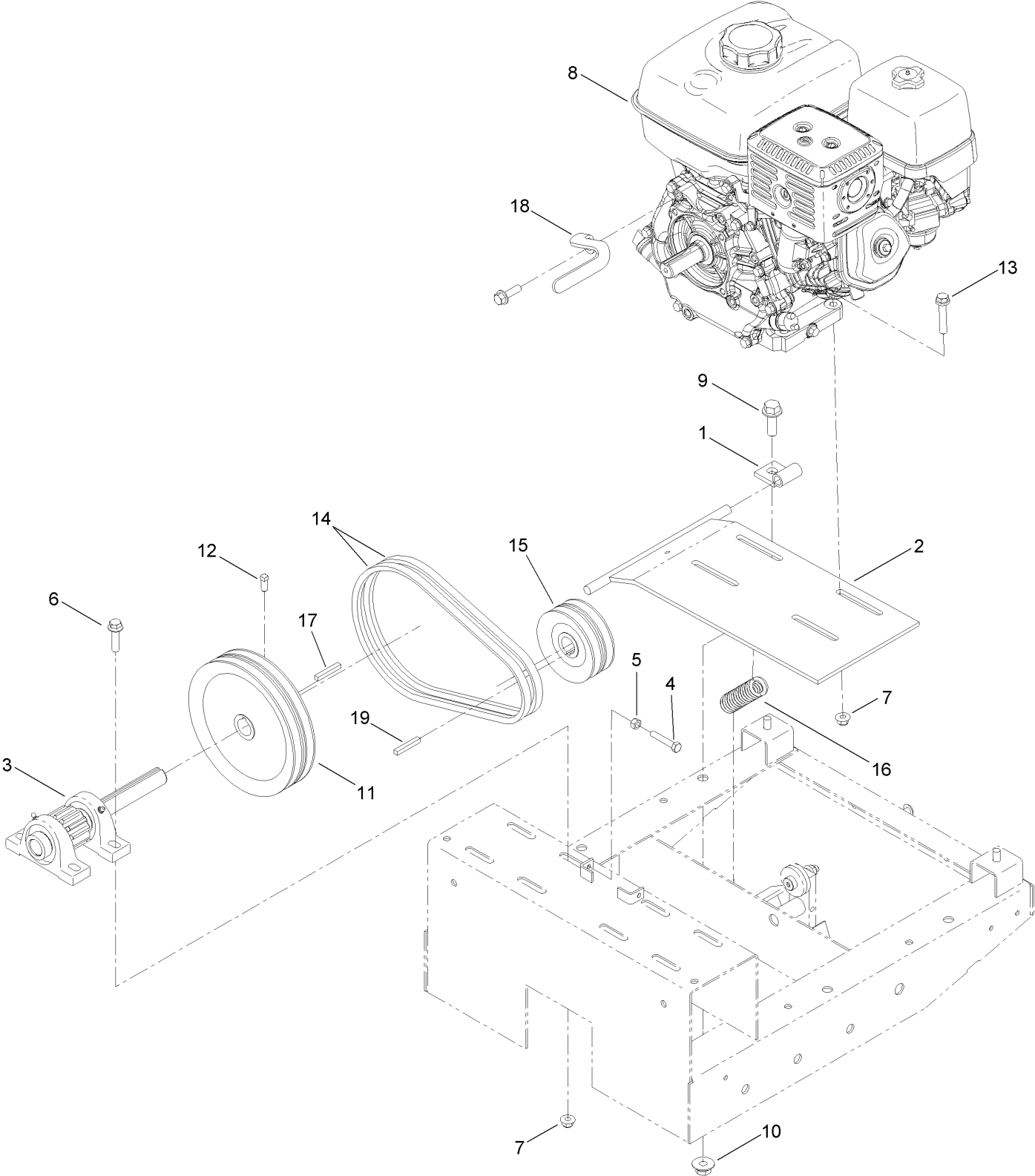
Drum, Paddle and Bearing Assembly



Drum, Paddle and Bearing Assembly (continued)

<i>Ref.</i>	<i>Part Number</i>	<i>Qty.</i>	<i>Description</i>	<i>Ref.</i>	<i>Part Number</i>	<i>Qty.</i>	<i>Description</i>
2	ST24021-01	1	Trunnion	25	ST57094BD-01	1	Paddle-Pusher, Ee, Extreme Duty
3	ST57631BD-01	1	Shaft-Paddle, Extreme Duty	26	ST26882-01	4	Clamp-Paddle
4	ST57074BD-01	1	Drum-Extreme Duty	27	ST80084	10	Screw-HH
5	ST32324	8	Seal-Drum	28	3296-53	10	Nut-Lock, NI
6	ST24017	4	Washer-Flat	29	ST57086BD-01	2	Bar-Backer, Pusher End
7	ST25881	2	Washer-Split	30	ST57089BD	2	Blade-Rubber, Mixer End
8	ST32326-01	2	Housing-Bearing	31	ST57090BD	4	Blade-Rubber, Mixer Top
9	ST32003	2	Bearing-Ball	32	3231-25	4	Bolt-CARR
10	ST36574-01	1	Trunnion-Capped	33	104-8301	28	Nut-Flange, NI
11	ST25909	1	Spacer-Shaft, Drum	34	ST57084BD-01	4	Bar-Backer, Top
12	ST26933-03	1	Gear-94 Teeth	35	ST57082BD-01	2	Bar-Backer End
13	ST26326	2	Washer-Flat	36	3231-4	20	Screw-CARR
14	325-6	2	Screw-HH	37	80-1300	2	Bolt-Shoulder
15	ST46042	4	Fitting-Grease	38	32128-43	2	Nut-Flange
16	ST24763-01	1	Handle-Dump	39	106-2008	1	Washer-Thrust
17	125-8158-01	1	Guard-Drum, Extreme Duty	40	116-0780	2	Screw-HHF, Shoulder
18	125-8163-03	1	Guard-Lifter	41	3296-23	4	Nut-Lock, NI
19	ST47023	1	Grip-Hand	42	3230-3	6	Screw-CARR
20	ST57047BD-01	1	Paddle-Tpe, Extreme Duty	43	104-8300	6	Nut-Flange, NI
21	ST57048BD-01	1	Paddle-Tpec, Extreme Duty	44	ST47001	4	Cap-Plug
22	ST57049BD-01	1	Paddle-Eec, Extreme Duty	45	3234-38	2	Screw-HHF
23	ST57050BD-01	1	Paddle-Ee, Extreme Duty	46	ST81060	1	Key-Square
24	ST57093BD-01	1	Paddle-Pusher, Tpe, Extreme Duty	47	125-8175	2	Decal-Grease

Engine and Belt Assembly

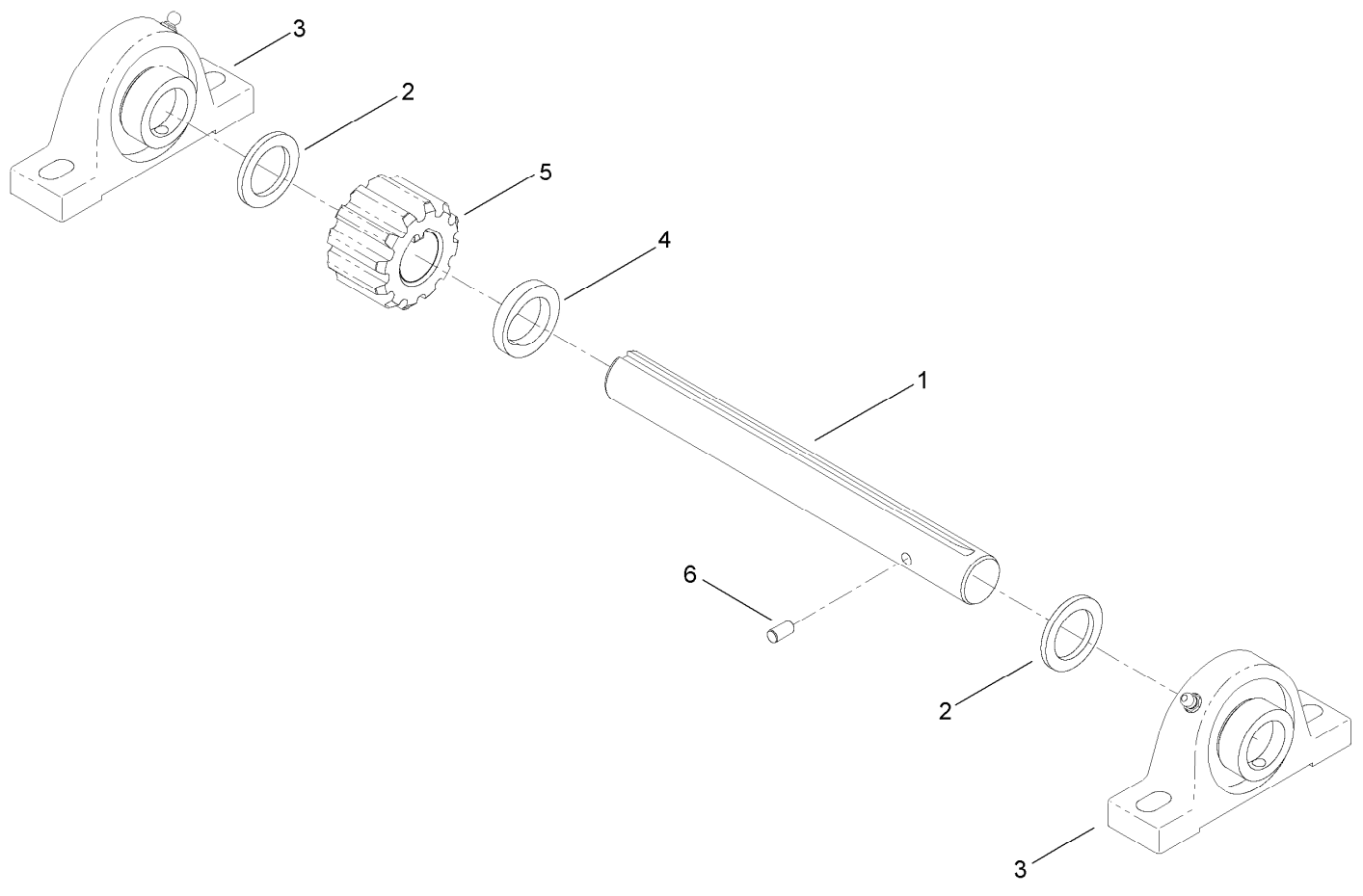


Engine and Belt Assembly (continued)

<i>Ref.</i>	<i>Part Number</i>	<i>Qty.</i>	<i>Description</i>	<i>Ref.</i>	<i>Part Number</i>	<i>Qty.</i>	<i>Description</i>
1	ST57786-03	2	Mount-Motor	11	ST38450	1	Sheave
2	ST39557-03	1	Base-Motor	12	120-6474	2	Screw-Set, SQH
3	ST21471	1	Pinion ASM	13	108-3742	4	Screw-HHF
4	322-41	1	Screw-HH	14	ST34052	2	Belt-V
5	3217-6	1	Nut-Hex	15	ST38449	1	Sheave
6	114-4681	4	Screw-HHF	16	ST34849	1	Spring
7	104-8301	8	Nut-Flange, NI	17	7-0238	1	Key-Square
8	125-4812	1	Engine-Honda, Gx240 ●	18	127-1665	1	Guide-Belt
9	100-6116	2	Screw-HHF	19	7-0238	1	Key-Square
10	32128-56	2	Nut-HF				

● Obtain parts from www.honda-engines.com

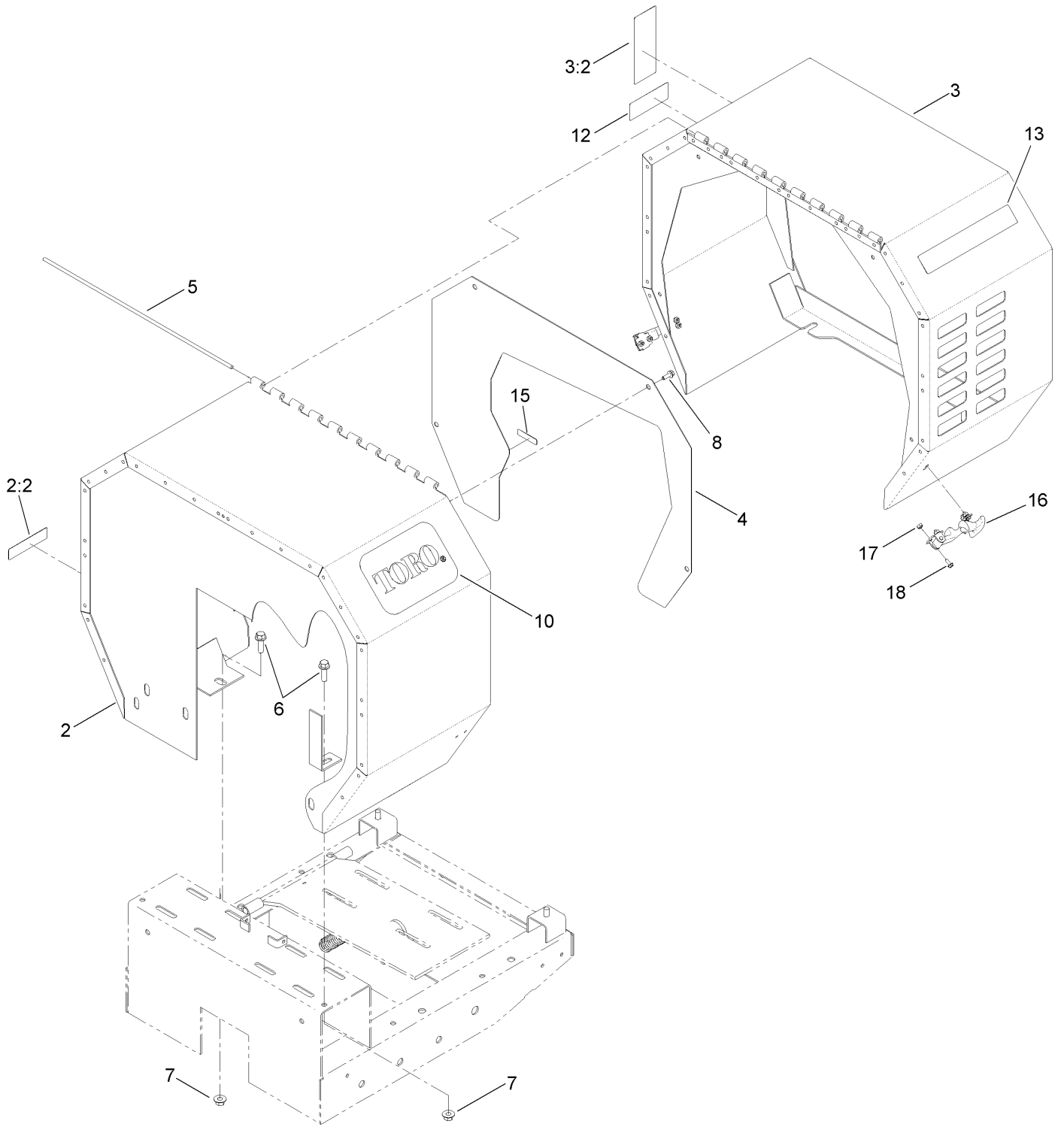
Pinion Assembly No. ST21471



Pinion Assembly No. ST21471 (continued)

<i>Ref.</i>	<i>Part Number</i>	<i>Qty.</i>	<i>Description</i>	<i>Ref.</i>	<i>Part Number</i>	<i>Qty.</i>	<i>Description</i>
1	ST24036	1	Shaft-Pinion	4	ST38122	1	Washer
2	ST24622	2	Washer-Flat	5	ST57625	1	Gear-Spur
3	ST32208	2	Bearing-Block, Pillow	6	95-0715	1	Pin-Dowel

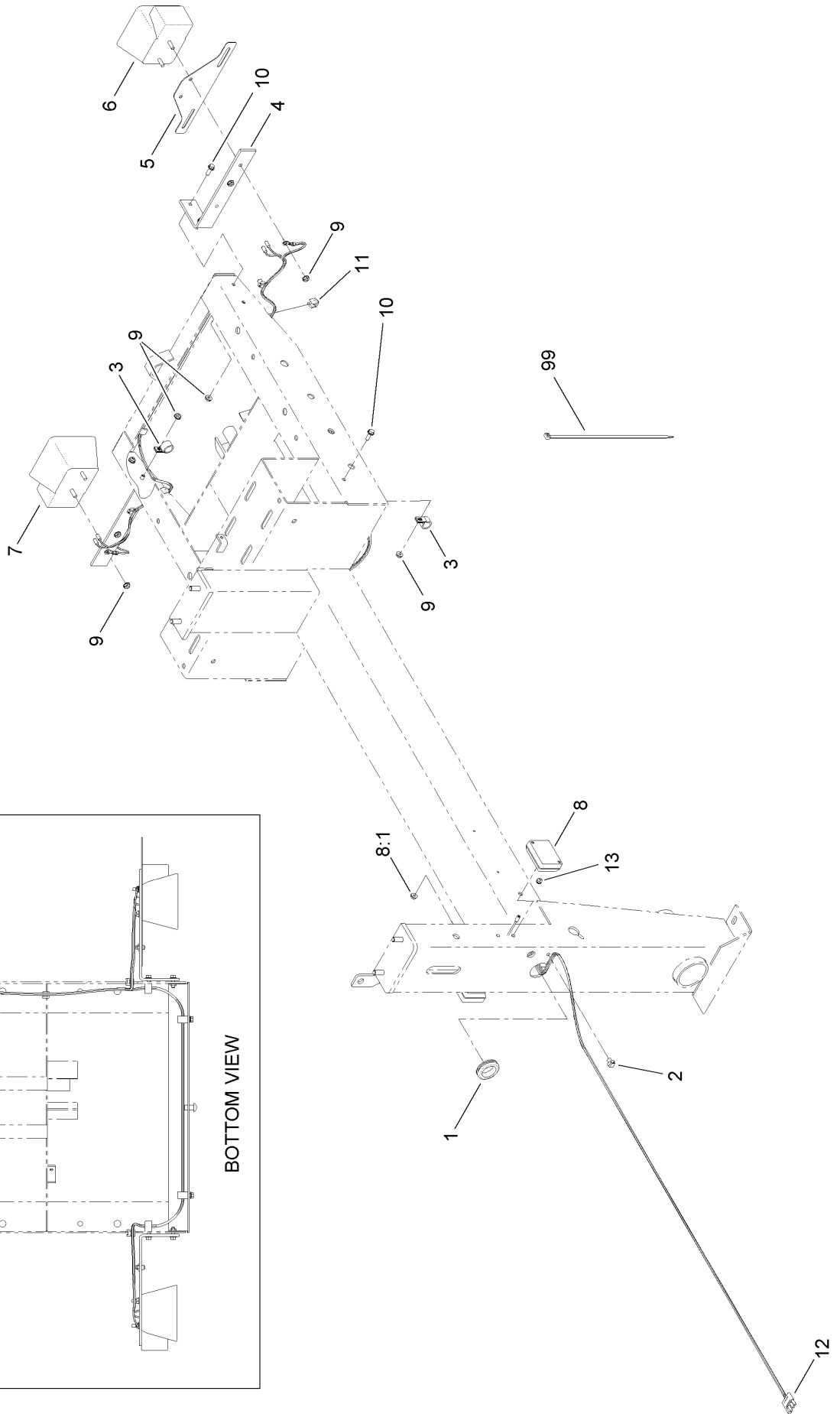
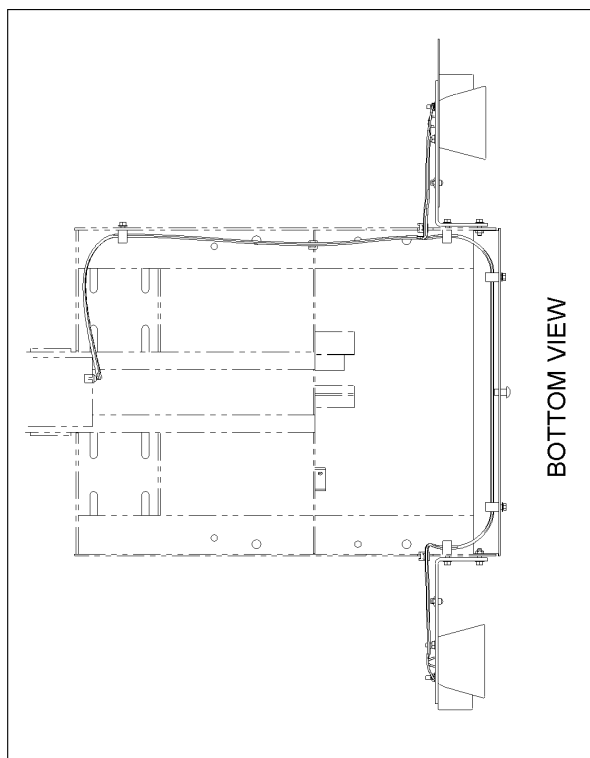
Cowl Assembly



Cowl Assembly (continued)

<i>Ref.</i>	<i>Part Number</i>	<i>Qty.</i>	<i>Description</i>	<i>Ref.</i>	<i>Part Number</i>	<i>Qty.</i>	<i>Description</i>
2	127-1694	1	Stationary Cowl ASM	8	115-5103	4	Screw-HHF
2:2	117-2718	1	Decal-Arrester, Spark	10	67-7320	2	Decal
3	127-1695	1	Movable Cowl ASM	12	125-4942	1	Decal
3:2	125-4939	1	Decal-Warning	13	125-4952	2	Decal
4	ST57067BD-03	1	Panel	15	125-8175	1	Decal-Grease
5	ST44368	1	Pin	16	ST35289	2	Latch-Flex, Draw
6	3234-24	4	Screw-HHF	17	3296-2	8	Nut-Lock, NI
7	32128-43	4	Nut-Flange	18	3290-321	8	Screw-HWH

Trailer Lights Assembly



Trailer Lights Assembly (continued)

<i>Ref.</i>	<i>Part Number</i>	<i>Qty.</i>	<i>Description</i>	<i>Ref.</i>	<i>Part Number</i>	<i>Qty.</i>	<i>Description</i>
1	120-4831	1	Grommet	8:1	32149-2	1	Nut-Keps
2	32180-030	1	Clip-Tie	9	32149-2	11	Nut-Keps
3	2412-87	5	Clamp-Cable	10	115-5103	7	Screw-HHF
4	ST36003-03	2	Bracket-Universal	11	32180-078	4	Clip-Edge
5	125-8659-03	1	Plate-License Holder	12	127-7567	1	Harness-Wire, Trailer Lights
6	120-3735	1	Light-Tail, LH	13	127-7566	2	Grommet
7	120-3734	1	Light-Tail, RH	99	3290-379	5	Tie-Cable
8	127-7562	2	Lamp-Marker, Front Side				

Attachments and Accessories

For 68023C MMX-1158H-S Mortar Mixer

Product Name	Model/Part
50in Forged Tow Pole Hitch	68057
50in Pintel Tow Pole Hitch	68059
50in Stamped Tow Pole Hitch	68061

Notes:



Count on it.