



**Count on it.**

**Parts Catalog**

**MM-12511H-S Mortar Mixer**

Model No. 68024C—Serial No. 314000001 and Up



# Ordering Replacement Parts

To order replacement parts, please supply the part number, the quantity, and the description of each part desired.

## Understanding Reference Numbers

Each identified part in an illustration has a reference number. The reference number for a part also appears in the parts list, along with other information about the part.

This catalog uses two special reference number formats, one to indicate parts in a service assembly and another to indicate the quantity of a given part in an illustration.

## Service Assembly Reference Numbers

Parts in service assemblies have reference numbers in the form a:b. The a represents the reference number of the entire service assembly and the b represents a sequential number unique to each part within the service assembly.

For example, a wheel assembly might be identified by reference number 6, the tire by 6:1, the valve by 6:2, and the wheel by 6:3. When you order the assembly identified by reference number 6, you receive all parts identified by reference numbers 6:1, 6:2, and 6:3. However, you may also order any part individually. Reference numbers of this type appear in illustration and in parts lists.

## Reference Numbers Indicating Quantity

In an illustration, if a reference number indicates more than one part, the reference number has the form nX y. The n represents the quantity of the part, the X is the multiplication symbol, and the y represents the reference number.

For example, in an illustration, the reference number 2X 37 means that two of the parts identified by reference number 37 are indicated.

# List of Abbreviations

**AR:** as required

**ASM:** assembly

**BBC:** blade brake control

**BHTF:** button head thread forming

**CARR:** carriage

**CCW:** counter clockwise

**CW:** clockwise

**DEG:** degrees

**DPA:** Dual Point Adjustment

**ECM:** electronic control module

**EXT:** external

**FH:** flat head

**GA:** gauge

**HD:** heavy-duty

**HF:** hex flange

**HH:** hex head

**HHF:** hex head flange

**HHFTF:** hex head flange thread forming

**HJ:** hex jam

**HLH:** hex lag head

**HOC:** height-of-cut

**HP:** high pressure

**HSBH:** hex socket button head

**HSFH:** hex socket flat head

**HSH:** hex socket head

**HWH:** hex washer head

**HWHTF:** hex washer head thread forming

**HYD:** hydraulic

**LH:** left hand

**LP:** low pressure

**LPG:** Liquefied Petroleum Gas

**NI:** nylon insert

**NPTF:** national pipe thread fine

**PFH:** phillips flat head

**PPH:** phillips pan head

**PPHTF:** phillips pan head thread forming

**PRH:** phillips round head

**PTH:** phillips truss head

**PTO:** power-take-off

**RH:** right hand

**ROPS:** roll-over protection system

**RRB:** rear roller brush

**SFH:** slotted fillister head

**SHH:** slotted hex head

**SHWH:** slotted hex washer head

**SPH:** slotted pan head

**SQH:** square head

**SRH:** slotted round head

**STD:** standard

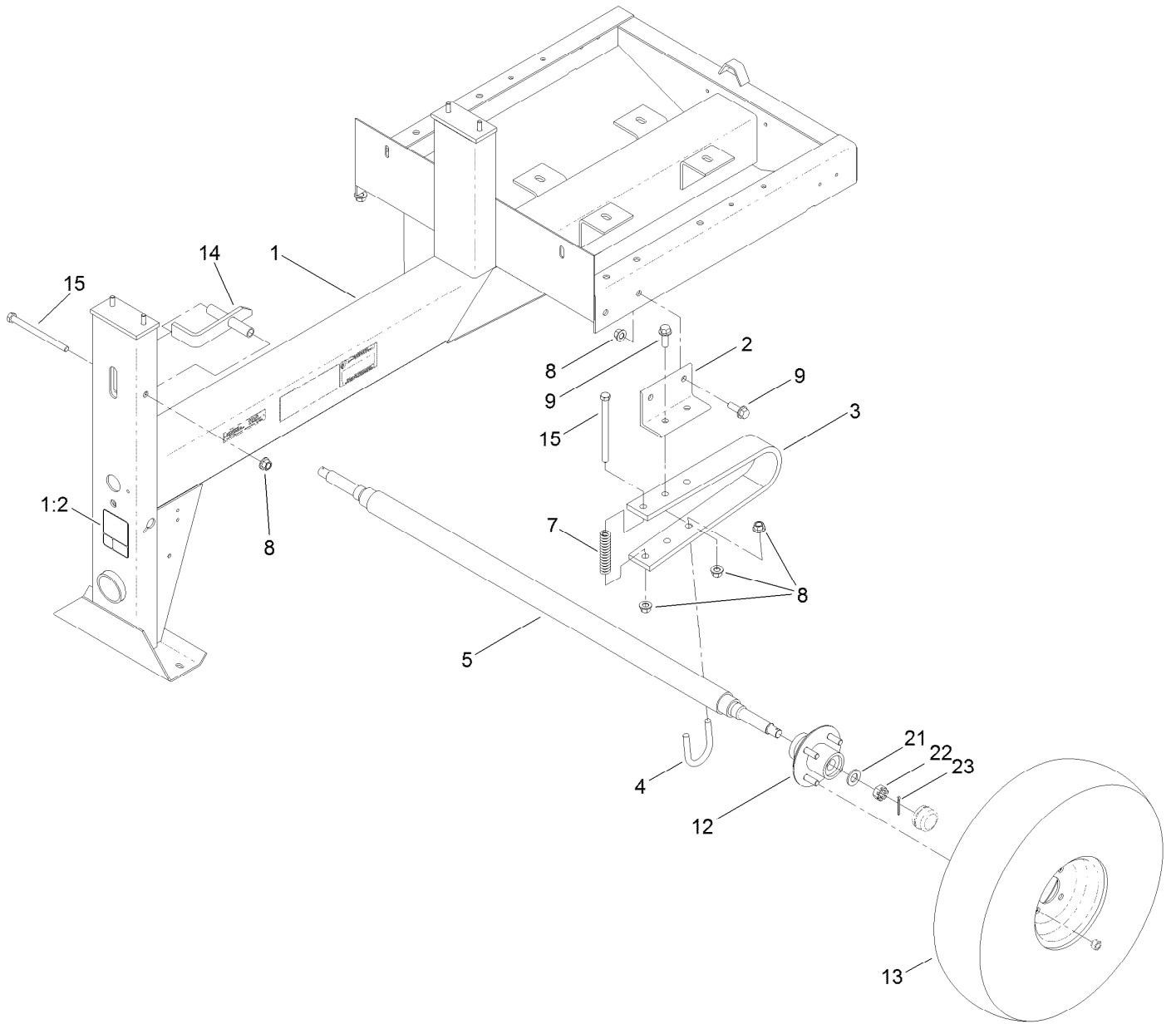
**TAP:** self tapping

**TTH:** torx truss head

# Contents

Frame and Axle Assembly .....	4
Hub Assembly No. 125-8171 .....	6
Drum Assembly .....	8
Engine and Gearcase Assembly .....	10
Gearcase Assembly No. ST22075-03 .....	12
Cowl Assembly .....	14
Trailer Lights and Harness Assembly .....	16
Attachments and Accessories .....	18

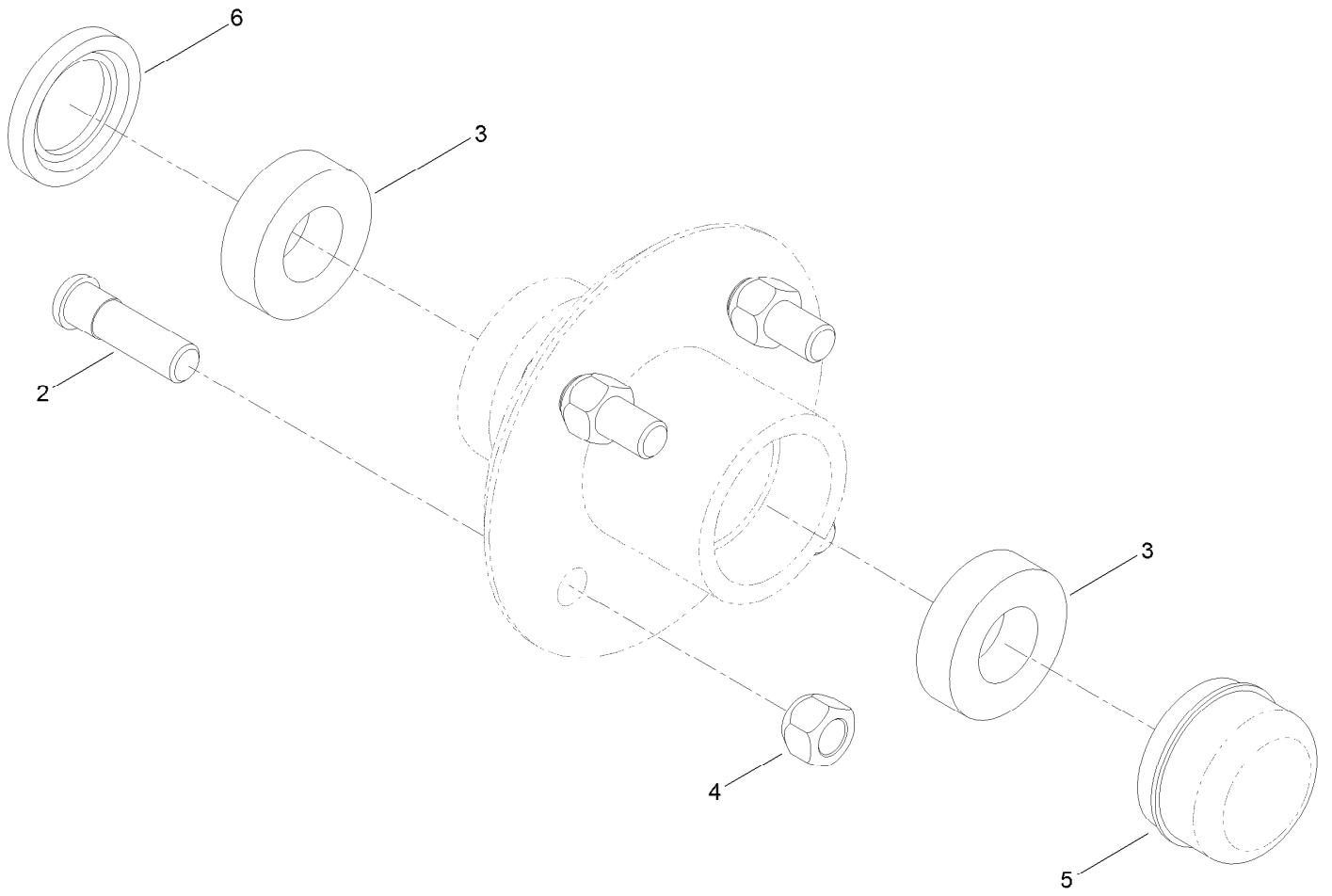
# Frame and Axle Assembly



## Frame and Axle Assembly (continued)

<i>Ref.</i>	<i>Part Number</i>	<i>Qty.</i>	<i>Description</i>	<i>Ref.</i>	<i>Part Number</i>	<i>Qty.</i>	<i>Description</i>
1	127-1682	1	Frame ASM	9	100-6116	8	Screw-HHF
1:2	125-8216	1	Decal-Safety Chain, Towing	12	125-8171	2	Hub ASM
2	ST26949-03	2	Bracket-Axle, Spring	13	ST32307	2	Tire And Rim ASM
3	ST26971	2	Spring-Leaf	14	ST24027-03	1	Latch-Drum
4	ST26195	2	Bolt-U	15	325-33	3	Screw-HH
5	ST21460-03	1	Axle-Spring	21	3256-28	2	Washer-Flat
7	ST34972	2	Spring-Coil	22	ST80054	2	Nut
8	99-5107	15	Nut-Lock	23	3272-13	2	Pin-Cotter

# Hub Assembly No. 125-8171



## Hub Assembly No. 125-8171 (continued)

<i>Ref.</i>	<i>Part Number</i>	<i>Qty.</i>	<i>Description</i>
2	ST39190	4	Stud-Wheel
3	ST32233	2	Bearing-Roller
4	ST80045	4	Nut-Lug

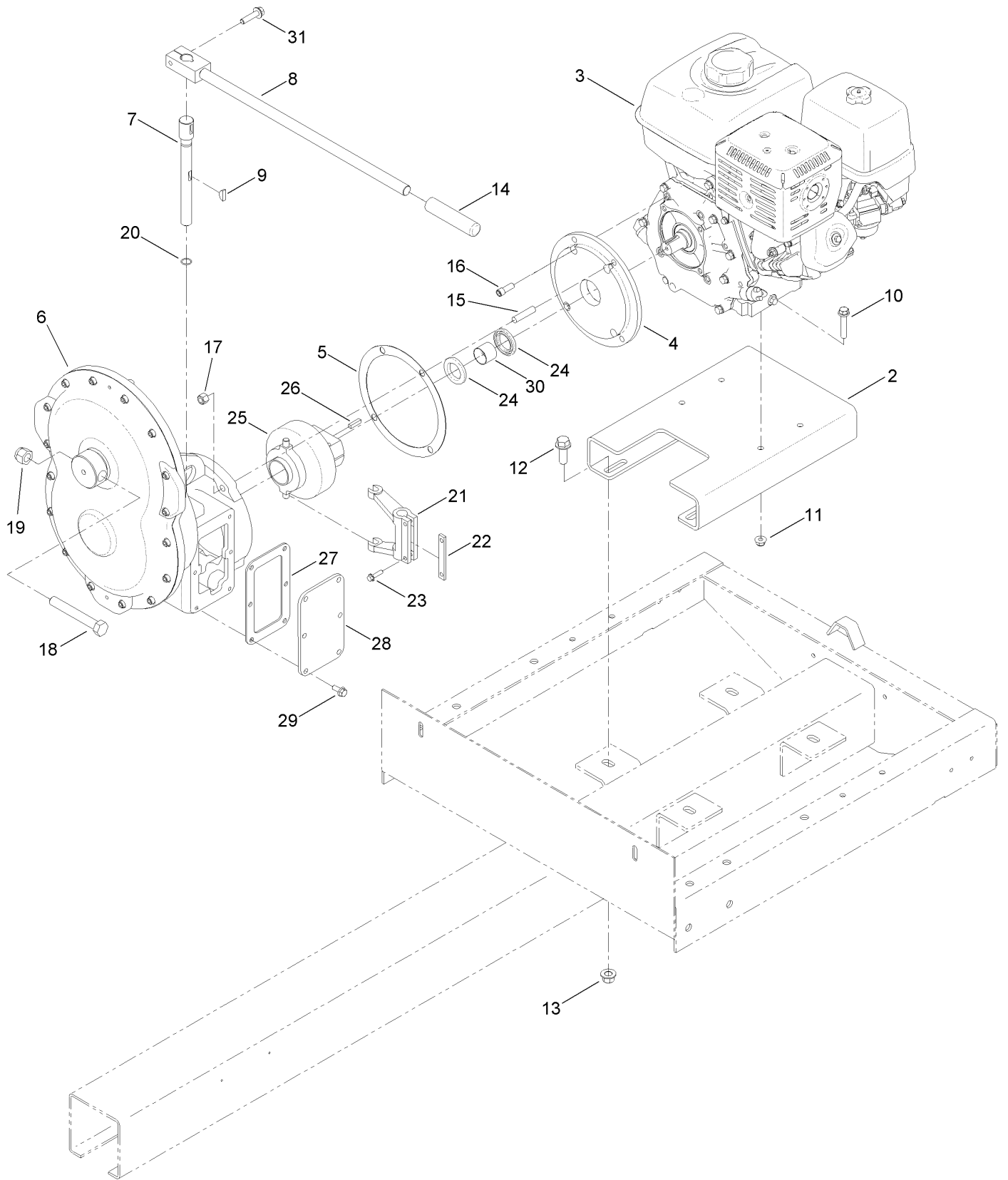
<i>Ref.</i>	<i>Part Number</i>	<i>Qty.</i>	<i>Description</i>
5	ST34573	1	Cap-Dust
6	ST32052	1	Seal-Hub, Wheel



## Drum Assembly (continued)

<i>Ref.</i>	<i>Part Number</i>	<i>Qty.</i>	<i>Description</i>	<i>Ref.</i>	<i>Part Number</i>	<i>Qty.</i>	<i>Description</i>
2	ST24021-01	1	Trunnion	23	ST24106	2	Blade-Rubber, Long
3	ST37575-01	1	Drum	24	125-6273-01	1	Guard-Moveable
4	ST36574-01	1	Trunnion-Capped	25	125-8154-03	1	Bar-Guard Lift
5	ST22215-01	1	Shaft-Drum	26	ST47023	1	Grip-Hand
6	ST32324	8	Seal-Drum	27	ST46042	4	Fitting-Grease
7	ST24017	4	Washer-Flat	28	ST28137-01	6	Bar-Long, Backer
8	ST25881	2	Washer-Split	29	327-7	10	Screw-HH
9	ST32326-01	2	Housing-Bearing	30	3296-53	10	Nut-Lock, NI
10	ST32003	2	Bearing-Ball	31	3231-25	30	Bolt-CARR
11	325-6	2	Screw-HH	32	104-8301	38	Nut-Flange, NI
12	ST44284	2	Spacer-Shaft, Drum	33	ST24103-01	2	Bar-Backer, Short
13	ST28087-03	1	Coupling-Shaft	34	3230-3	6	Screw-CARR
14	ST81060	1	Key-Square	35	104-8300	6	Nut-Flange, NI
15	125-6278-01	1	Guard	36	ST47001	4	Cap-Plug
16	ST24763-01	1	Handle-Dump	37	3234-38	6	Screw-HHF
17	ST22090-01	1	Paddle	38	99-5107	6	Nut-Lock
18	ST22091-01	2	Paddle	39	80-1300	4	Bolt-Shoulder
19	ST22092-01	2	Paddle	40	106-2008	1	Washer-Thrust
20	ST22093-01	1	Paddle	41	ST26326	2	Washer-Flat
21	ST26882-01	4	Clamp-Paddle	42	125-8175	2	Decal-Grease
22	ST24105	2	Blade-Rubber, Short				

# Engine and Gearcase Assembly

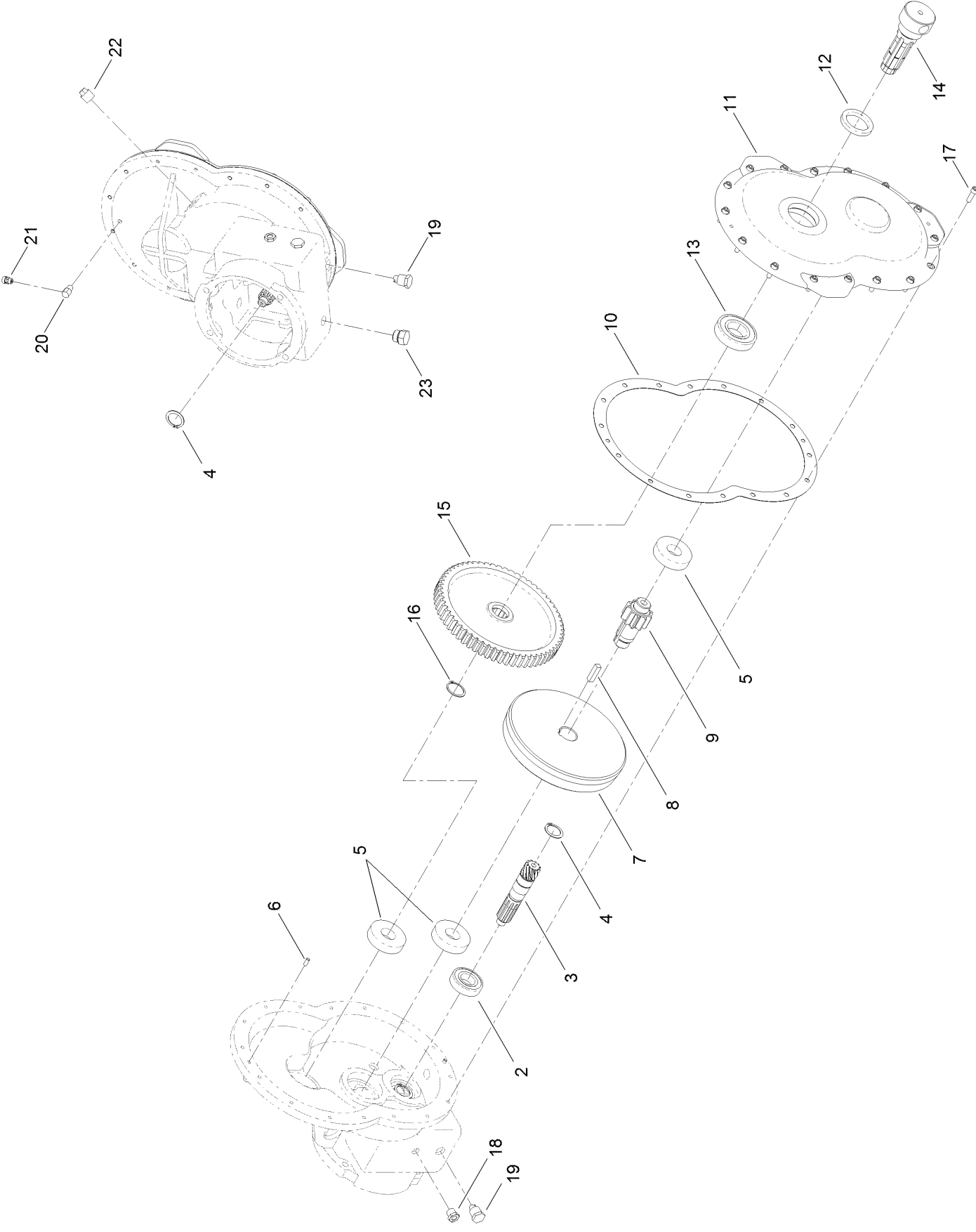


## Engine and Gearcase Assembly (continued)

<i>Ref.</i>	<i>Part Number</i>	<i>Qty.</i>	<i>Description</i>	<i>Ref.</i>	<i>Part Number</i>	<i>Qty.</i>	<i>Description</i>
2	ST28399-03	1	Base-Motor	17	3296-48	4	Nut-Lock, NI
3	125-4993	1	Engine-Honda, Gx340 ●	18	327-23	1	Screw-HH
4	ST28398	1	Adaptor-Engine	19	3296-53	1	Nut-Lock, NI
5	ST27010	1	Gasket-Adapter, Engine	20	ST47180	1	O-Ring
6	ST22075-03	1	Gearcase ASM	21	ST28093	1	Clutch
7	ST28094	1	Shaft-Clutch	22	ST28181	1	Spacer-Fork, Clutch
8	ST22099-03	1	Handle-Clutch	23	120-4654	2	Screw-HHF
9	3257-14	2	Key	24	ST32179	2	Seal-Shaft
10	108-3742	4	Screw-HHF	25	ST30401	1	Disconnect-Slip, Clutch
11	104-8301	4	Nut-Flange, NI	26	5-7280	1	Key
12	100-6116	4	Screw-HHF	27	ST32253	1	Gasket-Access, Clutch
13	99-5107	4	Nut-Lock	28	ST42461-03	1	Cover-Clutch Access
14	ST34765	1	Grip-Flex	29	3234-47	6	Screw-HHF
15	ST41039	4	Stud	30	ST28844	1	Bushing-Shaft
16	ST29469	4	Screw-HSH	31	114-4681	1	Screw-HHF

● Obtain parts from [www.honda-engines.com](http://www.honda-engines.com)

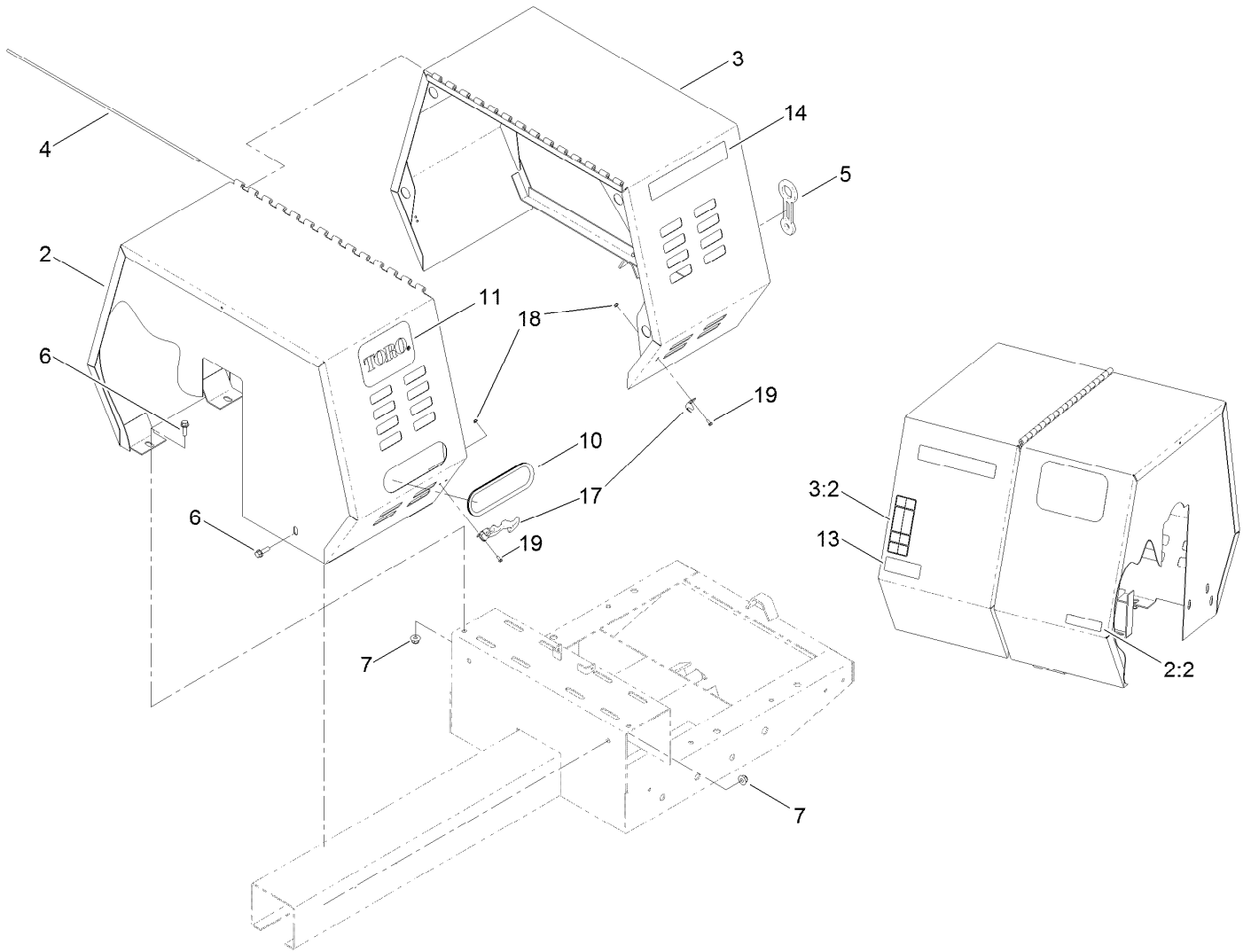
# Gearcase Assembly No. ST22075-03



## Gearcase Assembly No. ST22075-03 (continued)

<i>Ref.</i>	<i>Part Number</i>	<i>Qty.</i>	<i>Description</i>	<i>Ref.</i>	<i>Part Number</i>	<i>Qty.</i>	<i>Description</i>
2	ST32213	1	Bearing-Ball	13	ST32177	1	Bearing-Ball
3	ST28095	1	Shaft-Input, Pinion	14	ST28092	1	Shaft-Output, Gearcase
4	ST80098	2	Ring-External	15	ST28098	1	Gear-Spur
5	ST32101	3	Bearing-Roller	16	32120-84	1	Ring-Snap, External
6	75-6480	2	Pin	17	3274-22	16	Screw-HSH
7	ST28096	1	Gear-Helical	18	ST34096	1	Plug-Sight, Oil
8	ST81060	1	Key-Square	19	ST46108	2	Plug-HH, Magnetic
9	ST28097	1	Pinion	20	ST46062	1	Elbow-Connection
10	ST28088	1	Gasket-Gearcase	21	ST46064	1	Breather-Alemite
11	ST28085	1	Cover-Gearcase	22	ST46107	1	Plug
12	ST35295	1	Seal-Shaft	23	ST44332	1	Plug

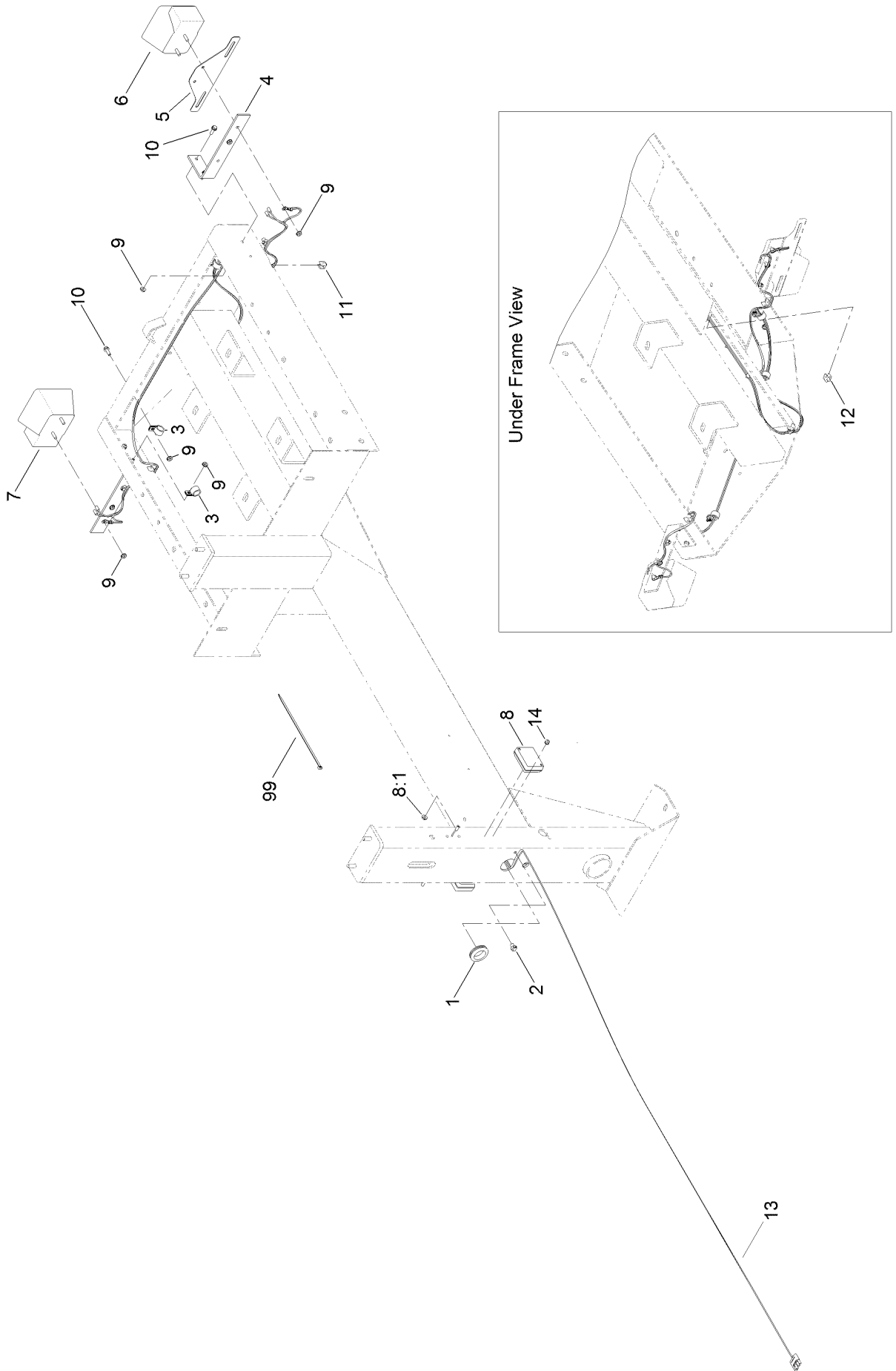
# Cowl Assembly



## Cowl Assembly (continued)

<i>Ref.</i>	<i>Part Number</i>	<i>Qty.</i>	<i>Description</i>	<i>Ref.</i>	<i>Part Number</i>	<i>Qty.</i>	<i>Description</i>
2	127-1684	1	Stationary Cowl ASM	10	ST47294	1	Trim-Lid
2:2	117-2718	1	Decal-Arrester, Spark	11	67-7320	2	Decal
3	127-1686	1	Movable Cowl ASM	13	125-4942	1	Decal
3:2	125-4939	1	Decal-Warning	14	125-4953	2	Decal-Mm-12511H
4	ST44372	1	Pin	17	ST35289	2	Latch-Flex, Draw
5	ST47182	1	Latch-Rubber	18	3296-12	8	Nut-Lock, NI
6	3234-24	6	Screw-HHF	19	3290-321	8	Screw-HWH
7	104-8301	6	Nut-Flange, NI				

# Trailer Lights and Harness Assembly



## Trailer Lights and Harness Assembly (continued)

<i>Ref.</i>	<i>Part Number</i>	<i>Qty.</i>	<i>Description</i>	<i>Ref.</i>	<i>Part Number</i>	<i>Qty.</i>	<i>Description</i>
1	120-4831	1	Grommet	9	32149-2	10	Nut-Keps
2	32180-030	1	Clip-Tie	10	115-5103	6	Screw-HHF
3	2412-87	4	Clamp-Cable	11	32180-078	3	Clip-Edge
4	ST36003-03	2	Bracket-Universal	12	32180-082	1	Clip-Edge W/Tie, Perpendicular
5	125-8659-03	1	Plate-License Holder	13	127-7567	1	Harness-Wire
6	120-3735	1	Light-Tail, LH	14	127-7566	2	Grommet
7	120-3734	1	Light-Tail, RH	99	3290-379	5	Tie-Cable
8	127-7562	2	Lamp-Marker, Front Side				
8:1	32149-2	1	Nut-Keps				

# Attachments and Accessories

For 68024C MM-12511H-S Mortar Mixer

**Product Name**

**Model/Part**

Trailer Light Kit..... 68063

**Notes:**



**Count on it.**