



Part No. 68-7980

INSTALLATION INSTRUCTIONS

MOW VALVE DETENT KIT

(Reelmaster® 450 D)

Note: Right and left sides are determined from the operator's right or left side.

DISASSEMBLY

1. Loosen capscrews securing battery cover, slide cover off capscrews and disconnect the negative (-) terminal connection from the battery.
2. Set parking brake and place a drain pan under center console area of machine.
3. Remove seat lock pin, raise seat and hold open with support rod. Remove front access panel from center console assembly.
4. Loosen pan head screws (2) at each end of instrument panel, raise panel and tip up to expose under side.
5. Remove cotter pin, (2) washers and clevis pin from spool of reel control valve.
6. Disconnect all hydraulic lines from reel control assembly.

IMPORTANT: When disassembling hydraulic lines make sure plugs are placed in the open end of the line to prevent foreign debris from contaminating the hydraulic oil. Keep all lines clean and free from debris. During replacement avoid over-tightening fittings. Check the hydraulic reservoir for level of hydraulic fluid after replacement of any component.

7. Remove and discard (2) screws, internal lockwashers and hex nuts securing micro switch to bottom of reel control valve. Leave the micro switch hang loose for later removal.
8. Remove the bolts, washers, lockwashers and hex nuts securing the valve to the machine and remove the valve.

ASSEMBLY

1. Place the reel control valve on a clean work surface.
2. Remove and discard the (2) detent blocks, mounting plate and spool extension from the bottom of the valve (Fig.1).

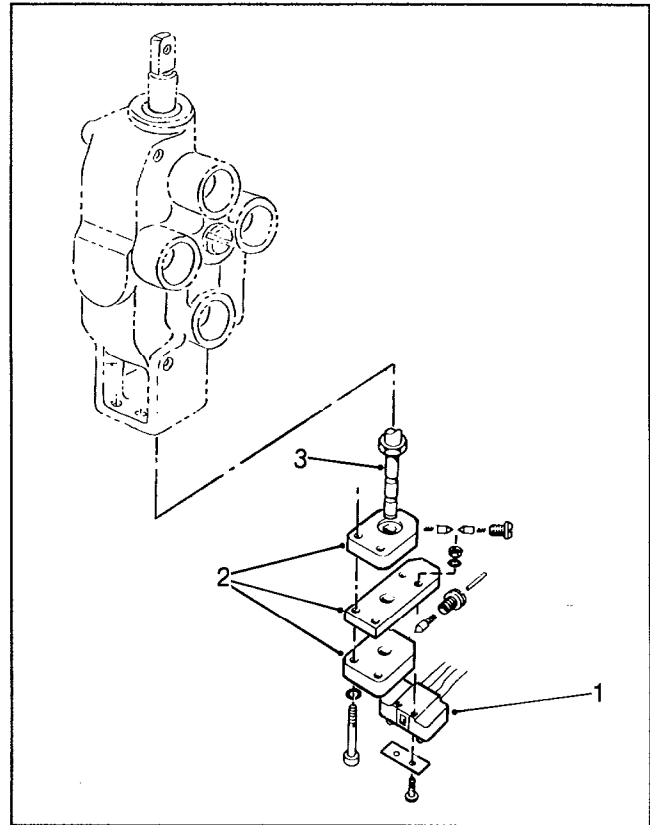


Figure 1

1. Micro Switch
2. Detent Blocks & Mounting Plate
3. Spool Extension

3. Apply Loctite 242 to threads of new spool extension and thread into valve spool until it bottoms out (Fig.2).
4. Pack hole in detent block for spool extension with grease (Mobilith), slip detent block onto spool extension and secure block to bottom of valve body with (2) machine screws and lockwashers (Fig. 2).
5. Pack hole in detent block and install circlip, spring, plug, sleeve and plunger assembly.
6. Mount micro switch to detent block with (2) machine screws, plain washers, lockwashers and nuts (Fig. 2).

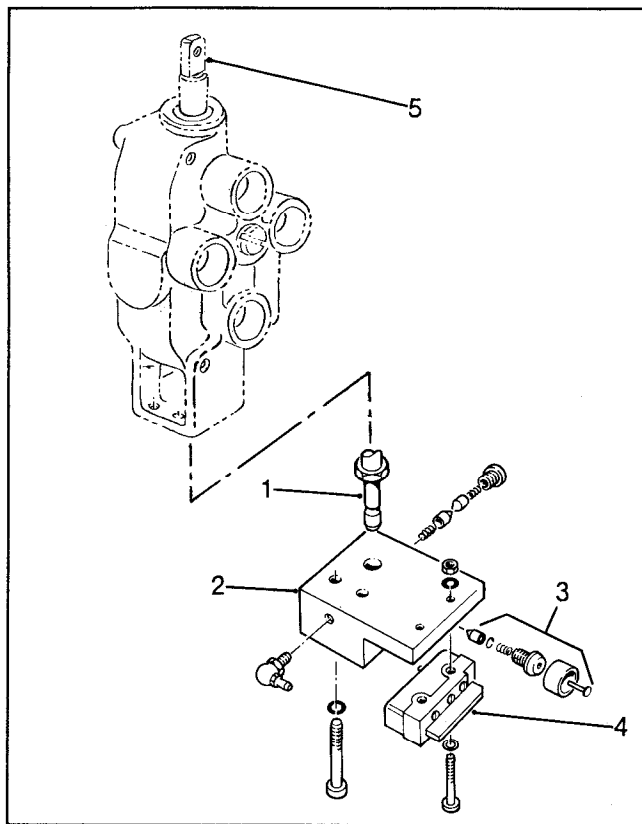


Figure 2

1. Spool Extension
2. Detent Block
3. Plunger Assembly
4. Micro Switch
5. Top of Spool

7. Connect new wire harness to micro switch terminals as shown in fig. 3.

8. Connect a continuity meter to switch terminals, actuate the spool, and check each terminal for proper operation. If switch fails to function correctly, loosen switch mounting fasteners and re-position switch until switch operation is satisfactory. Tighten fasteners.

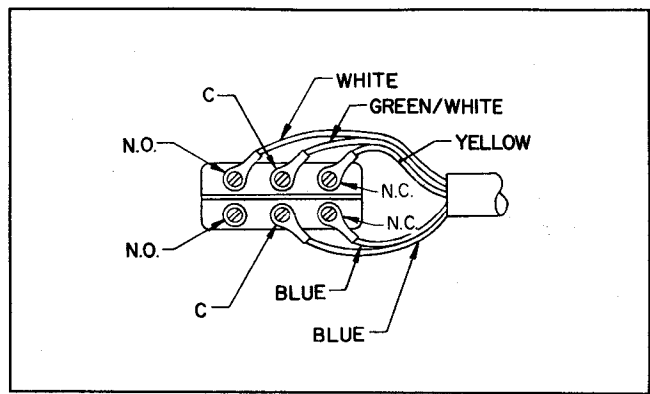


Figure 3

9. Using original mounting fasteners, install control valve assembly to machine.

10. Mount and secure hydraulic lines and connect link to top of spool end with clevis pin, (2) washers and cotter pin (Fig. 2).

11. Route new harness wires alongside old harness to terminal board on the underside of the instrument panel. Replace original micro switch harness wires with new wires as follows:

a. Remove each wire in turn and immediately replace with a similar colored wire to prevent mounting wires on the wrong terminal.

b. Discard original harness and micro switch after it has been disconnected.

12. Install instrument panel and secure with fasteners.

13. Connect negative (-) battery cable to battery and install battery cover.

14. Start engine and check for hydraulic oil leaks. Shut engine off and disconnect battery before making any corrections; if no leaks are evident, proceed to step 15.

15. Install center console access panel.