



Count on it.

Parts Catalog

20in Turf Seeder

Model No. 23510—Serial No. 314000001 and Up

Model No. 33510—Serial No. 314000001 and Up



Ordering Replacement Parts

To order replacement parts, please supply the part number, the quantity, and the description of each part desired.

Understanding Reference Numbers

Each identified part in an illustration has a reference number. The reference number for a part also appears in the parts list, along with other information about the part.

This catalog uses two special reference number formats, one to indicate parts in a service assembly and another to indicate the quantity of a given part in an illustration.

Service Assembly Reference Numbers

Parts in service assemblies have reference numbers in the form a:b. The a represents the reference number of the entire service assembly and the b represents a sequential number unique to each part within the service assembly.

For example, a wheel assembly might be identified by reference number 6, the tire by 6:1, the valve by 6:2, and the wheel by 6:3. When you order the assembly identified by reference number 6, you receive all parts identified by reference numbers 6:1, 6:2, and 6:3. However, you may also order any part individually. Reference numbers of this type appear in illustration and in parts lists.

Reference Numbers Indicating Quantity

In an illustration, if a reference number indicates more than one part, the reference number has the form nX y. The n represents the quantity of the part, the X is the multiplication symbol, and the y represents the reference number.

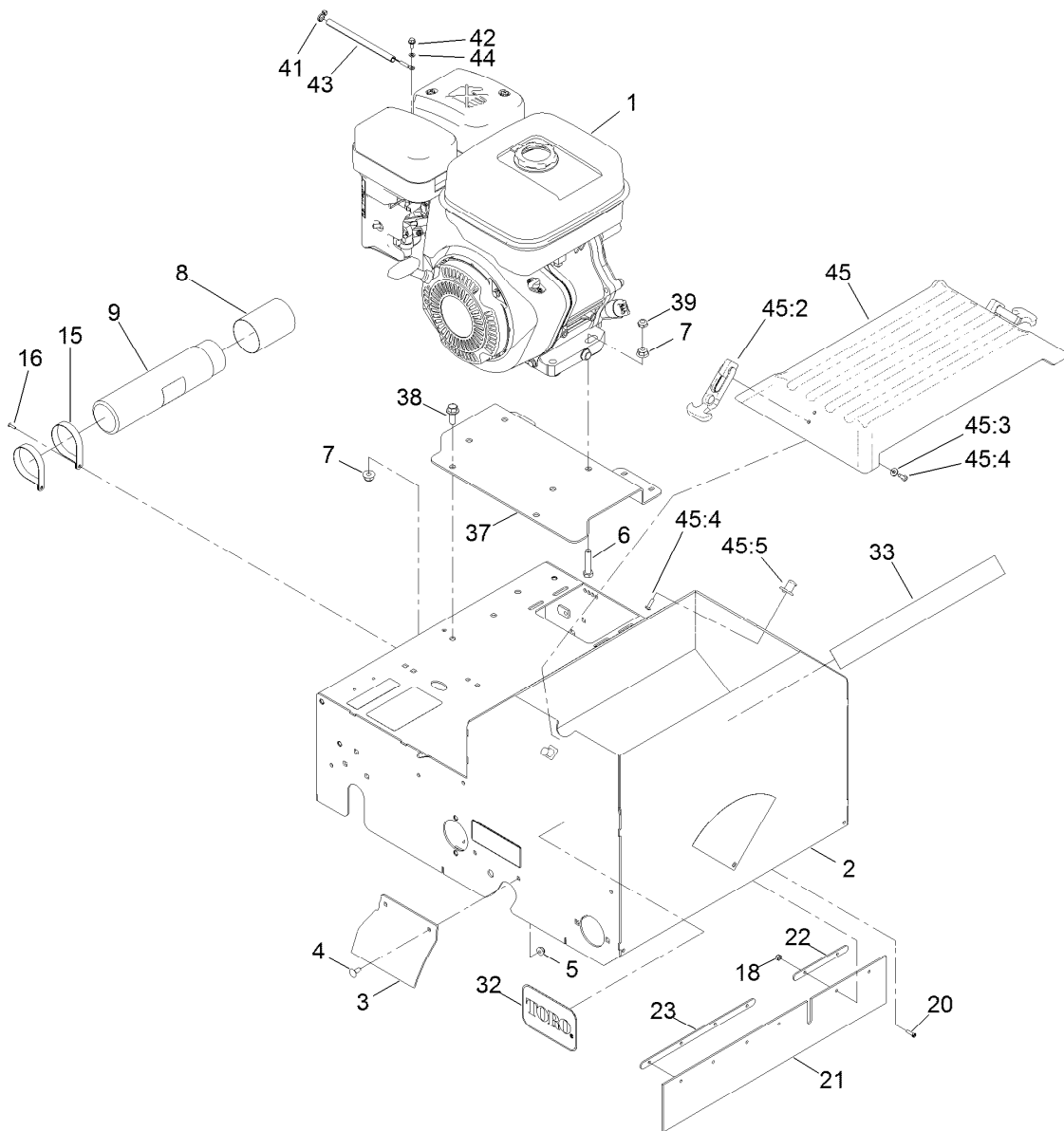
For example, in an illustration, the reference number 2X 37 means that two of the parts identified by reference number 37 are indicated.

List of Abbreviations

AR: as required	HLH: hex lag head	PTO: power-take-off
ASM: assembly	HOC: height-of-cut	RH: right hand
BBC: blade brake control	HSBH: hex socket button head	ROPS: roll-over protection system
BHTF: button head thread forming	HSFH: hex socket flat head	RRB: rear roller brush
CARR: carriage	HSH: hex socket head	SFH: slotted fillister head
CCW: counter clockwise	HWH: hex washer head	SHH: slotted hex head
CW: clockwise	HWHTF: hex washer head thread forming	SHWH: slotted hex washer head
DEG: degrees	HYD: hydraulic	SPH: slotted pan head
DPA: Dual Point Adjustment	LH: left hand	SQH: square head
ECM: electronic control module	LP: Liquefied Petroleum Gas	SRH: slotted round head
EXT: external	LPG: Liquefied Petroleum Gas	STD: standard
FH: flat head	NI: nylon insert	TAP: self tapping
GA: gauge	NPTF: national pipe thread fine	TTH: torx truss head
HD: heavy-duty	PFH: phillips flat head	
HF: hex flange	PPH: phillips pan head	
HH: hex head	PPHTF: phillips pan head thread forming	
HHF: hex head flange	PRH: phillips round head	
HHFTF: hex head flange thread forming	PTH: phillips truss head	
HJ: hex jam		

Contents

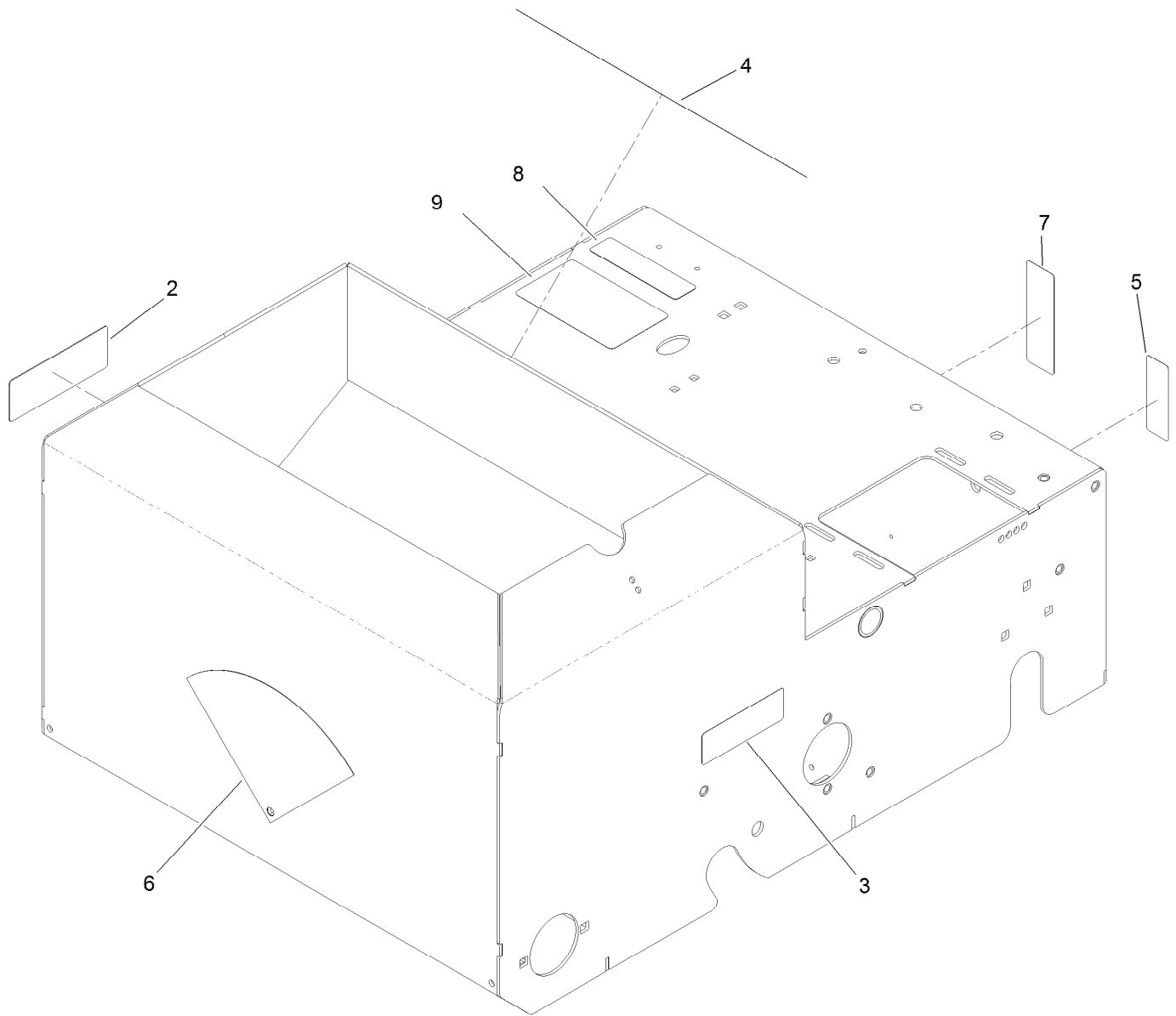
Engine and Frame Assembly	4
Main Frame Assembly No. 121-6196	5
Handle Assembly	6
Cutting Wheel Assembly	8
Shaft Assembly No. 126-0034	9
Seed Gate Assembly	10
Belt Drive Assembly	12
Transmission Assembly	14



Engine and Frame Assembly

Ref.	Part Number	Qty.	Description	Ref.	Part Number	Qty.	Description
1		1	Engine-Subaru, Ex27 ●	23	121-1992	1	Plate-Retainer
2	121-6196	1	Frame ASM	32	67-1300	2	Decal
3	121-1896-01	1	Guard-RH	33	121-6177	1	Decal
4	3229-11	2	Screw-CARR	37	116-9524-01	1	Plate-Engine
5	104-7201	2	Nut-HF	38	3234-42	3	Screw-HHF
6	323-9	4	Screw-HH	39	3296-59	1	Nut-Lock, NI
7	104-8301	7	Nut-Flange, NI	41	1-303287	1	Tie-Cable
8	104-7048	1	Cap-Housing	42	120-4579	1	Screw-Hfh
9	104-7050	1	Tube-Manual	43	126-1000	1	Rfi-Sheathing
15	2412-120	2	Clamp-R	44	43-5920	1	Washer-Lock, Spring
16	3269-17	2	Rivet-Pop	45	126-1665	1	Seeder Cover Kit
18	3296-1	6	Nut-Lock	45:2	103-4080	2	Latch-Rubber
20	3290-392	6	Screw-SHH	45:3	3256-14	4	Washer-Flat
21	121-1990	1	Guard-Dust	45:4	3290-500	6	Screw-PPH
22	121-1991	1	Plate-Retainer	45:5	103-4081	2	Latch-Keeper

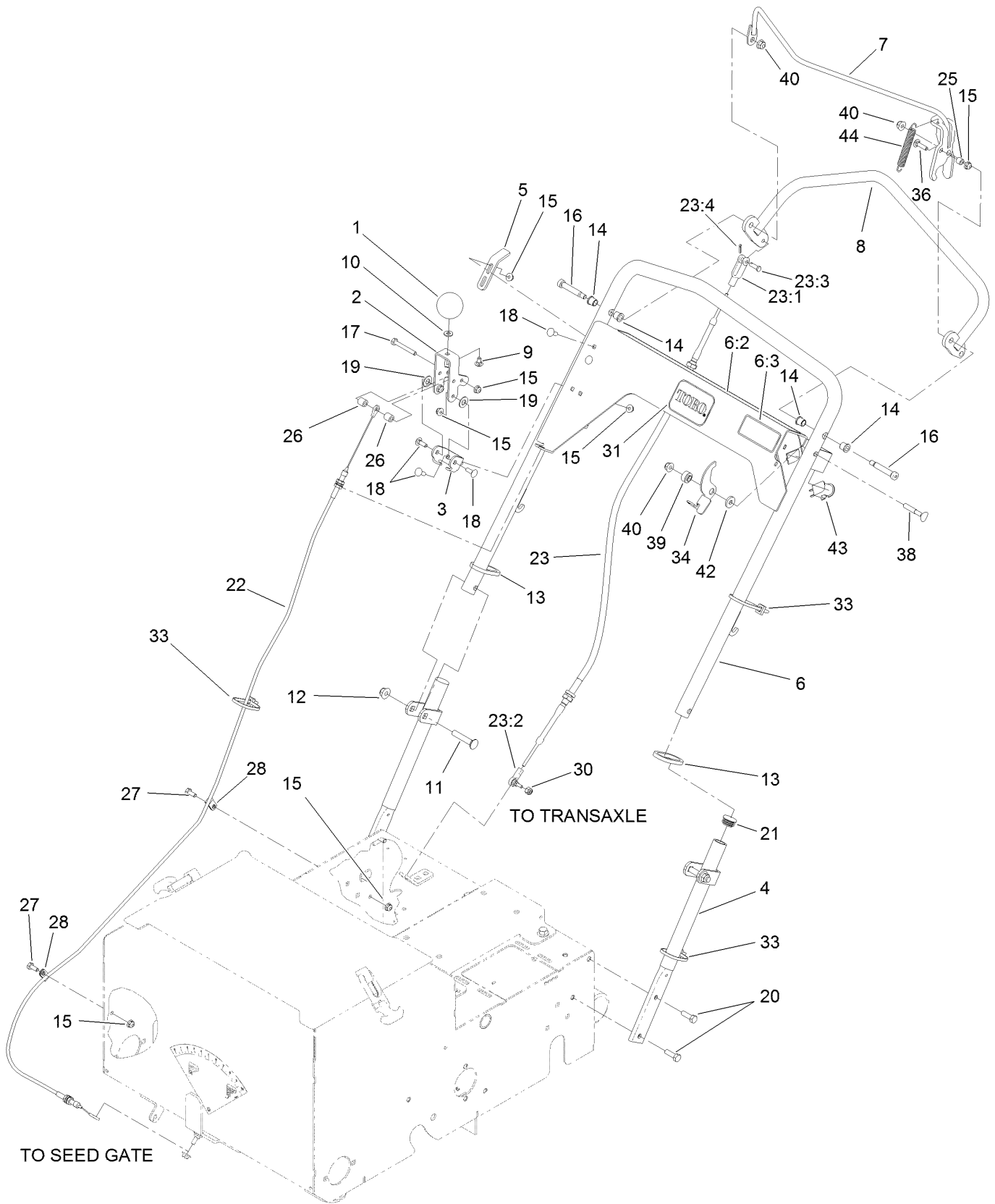
● Not serviced separately



Main Frame Assembly No. 121-6196

<i>Ref.</i>	<i>Part Number</i>	<i>Qty.</i>	<i>Description</i>
2	93-7321	1	Decal-Danger
3	117-4979	1	Decal-Warning, Shields
4	121-2011	1	Decal-Warning
5	115-9625	1	Decal
6	116-8535	1	Decal-Flow, Seed
7	121-6203	1	Decal-Bypass
8	117-2718	1	Decal-Arrester, Spark
9	126-0296	1	Decal-Service Aid Seeder

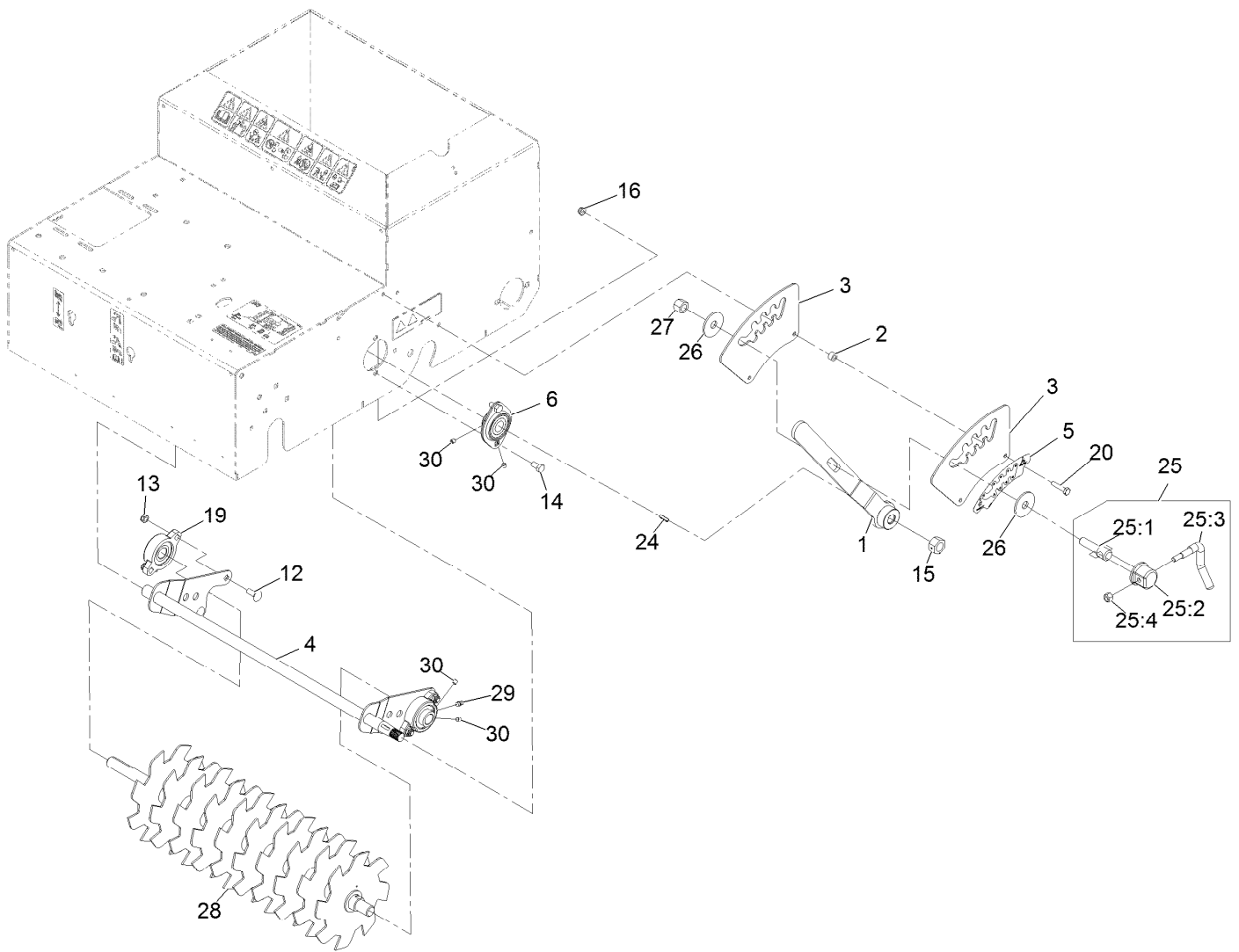
Handle Assembly



Handle Assembly (continued)

<i>Ref.</i>	<i>Part Number</i>	<i>Qty.</i>	<i>Description</i>	<i>Ref.</i>	<i>Part Number</i>	<i>Qty.</i>	<i>Description</i>
1	121-1877	1	Knob-Rate, Flow	21	121-4870	2	Plug
2	121-1878	1	Lever-Adjust, Flow	22	126-0042	1	Cable-Flow, Seed
3	121-1879	1	Bracket-Adjust, Flow	23	116-8252	1	Cable-Push Pull
4	121-1893-03	2	Handle-Lower	23:1	121-2000	1	Clevis
5	121-1928	1	Bracket-Adjust, Drive	23:2	117-9720	1	Ball Joint
6	116-9735	1	Handle	23:3	283-67	1	Pin-Clevis
6:2	116-8648	1	Decal-Control Panel, Seeder	23:4	3272-5	1	Pin-Cotter
6:3	116-8536	1	Decal-Safety Latch	25	66-8010	1	Spacer-Hub, Impeller
7	126-0509-03	1	Bail-Clutch	26	22-7810	2	Spacer
8	121-1948-03	1	Handle-Drive	27	321-3	2	Screw-HH
9	3229-10	1	Screw-CARR ●	28	2412-149	2	Clamp-Hose
10	3256-22	1	Washer-Flat	30	3296-3	1	Nut-Lock
11	3231-6	2	Screw-CARR	31	70-2200	1	Decal
12	104-8301	2	Nut-Flange, NI	33	3290-378	3	Tie-Cable
13	121-6202	2	Ring-Handle Lock	34	126-0205	1	Latch-Bail
14	103-9928	4	Bearing	36	3229-2	1	Screw-CARR
15	104-7201	10	Nut-HF	38	112-8876	1	Screw-Handle
16	126-0277	2	Screw-Shoulder	39	116-2690	1	Bushing-Stepped
17	321-11	1	Screw-HH	40	104-8300	3	Nut-Flange, NI
18	3229-1	6	Bolt-CARR	42	88-7200	1	Washer-Flat
19	48-9220	2	Washer	43	82-2190	1	Switch-Bail
20	322-5	4	Screw-HH	44	95-3805	1	Spring

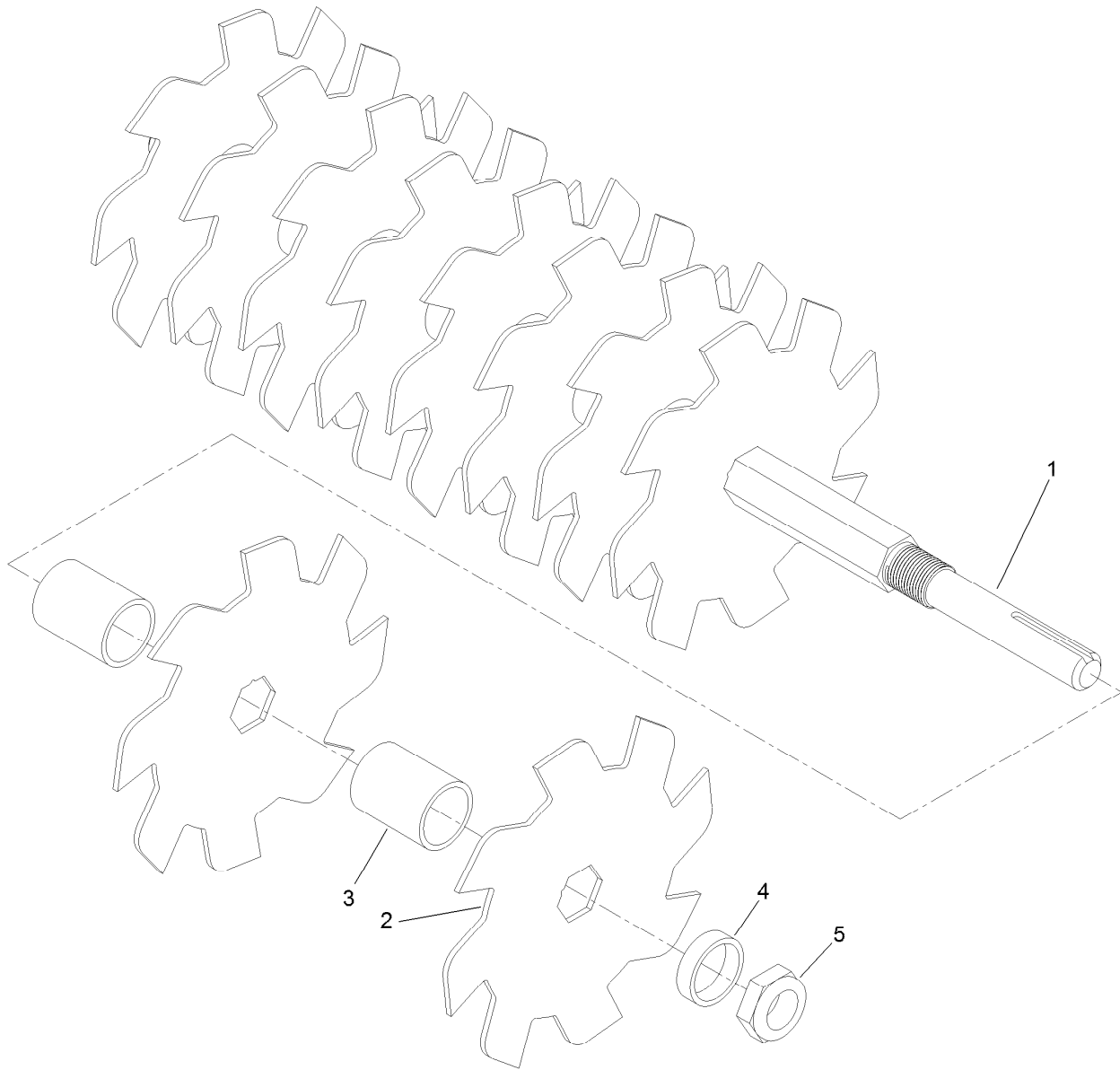
● Use Pro-Lock, Nut Type (P/N 1-840022, .5ml tube) on threads.



Cutting Wheel Assembly

Ref.	Part Number	Qty.	Description	Ref.	Part Number	Qty.	Description
1	116-9932-03	1	Handle-Height	20	321-8	2	Screw-HH 1/4-20 X 1 1/4
2	98-4799	2	Spacer	24	3257-5	1	Key-Woodruff #9 3/4 X 3/16
3	116-9928	2	Plate-Height	25	107-1664	1	Lever ASM
4	126-0010-03	1	Pivot-Height	25:1	106-3239	1	Screw-Lock
5	126-2446	1	Decal-Cut Depth, Slicer/Seeder	25:2	107-1644	1	Cap-Lock
6	121-1961	2	Bearing	25:3	106-3241	1	Lever-Lock
12	3230-16	4	Bolt-Carriage 5/16-18 X 7/8	25:4	3296-29	1	Nut-Nyloc 5/16-18
13	3296-47	4	Nut-Nyloc 5/16-18 Thin	26	86-1990	2	Washer
14	322-2	4	Screw-HH 5/16-18 X 5/8	27	3296-23	1	Nut-Nyloc 1/2-13
15	603164	1	Nut-Blade	28	126-0034	1	Slicer Shaft ASM
16	104-7201	2	Nut-Nyloc 1/4-20 Flg	29	302-19	2	Zerk-1/4-28 Str●
19	116-9992	2	Bearing-Flange	30	3245-35	8	Screw-Set HSH 1/4-28 X 1/4●

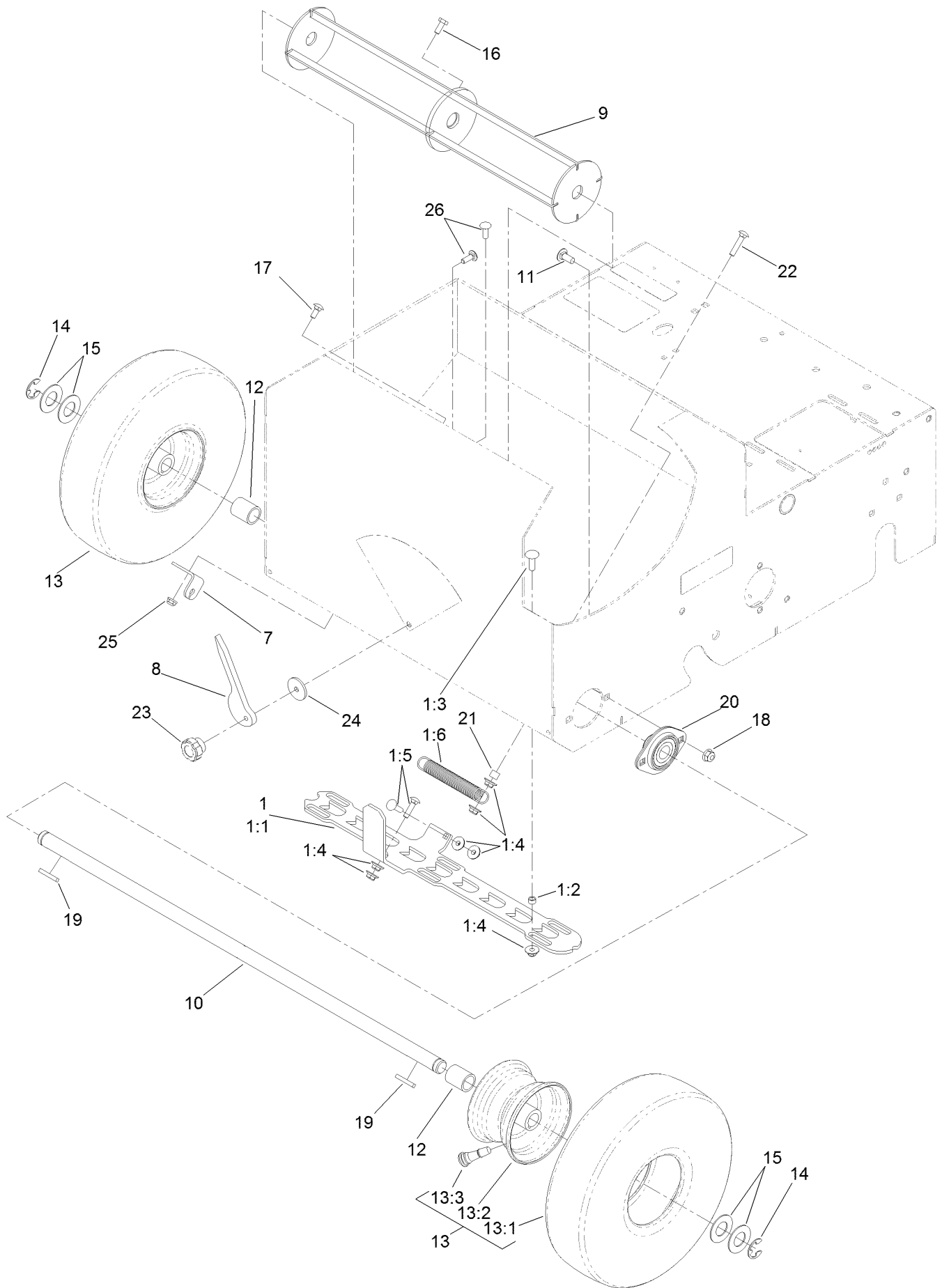
● Use Pro-Lock, Nut Type (P/N 1-840022, .5ml tube) on threads.



Shaft Assembly No. 126-0034

<i>Ref.</i>	<i>Part Number</i>	<i>Qty.</i>	<i>Description</i>
1	126-0009	1	Shaft-Slicer
2	121-1931	10	Blade-Cutting, Seeder
3	126-0041	9	Spacer-Blade
4	126-0033	1	Spacer
5	3296-60	1	Nut-Lock, NI

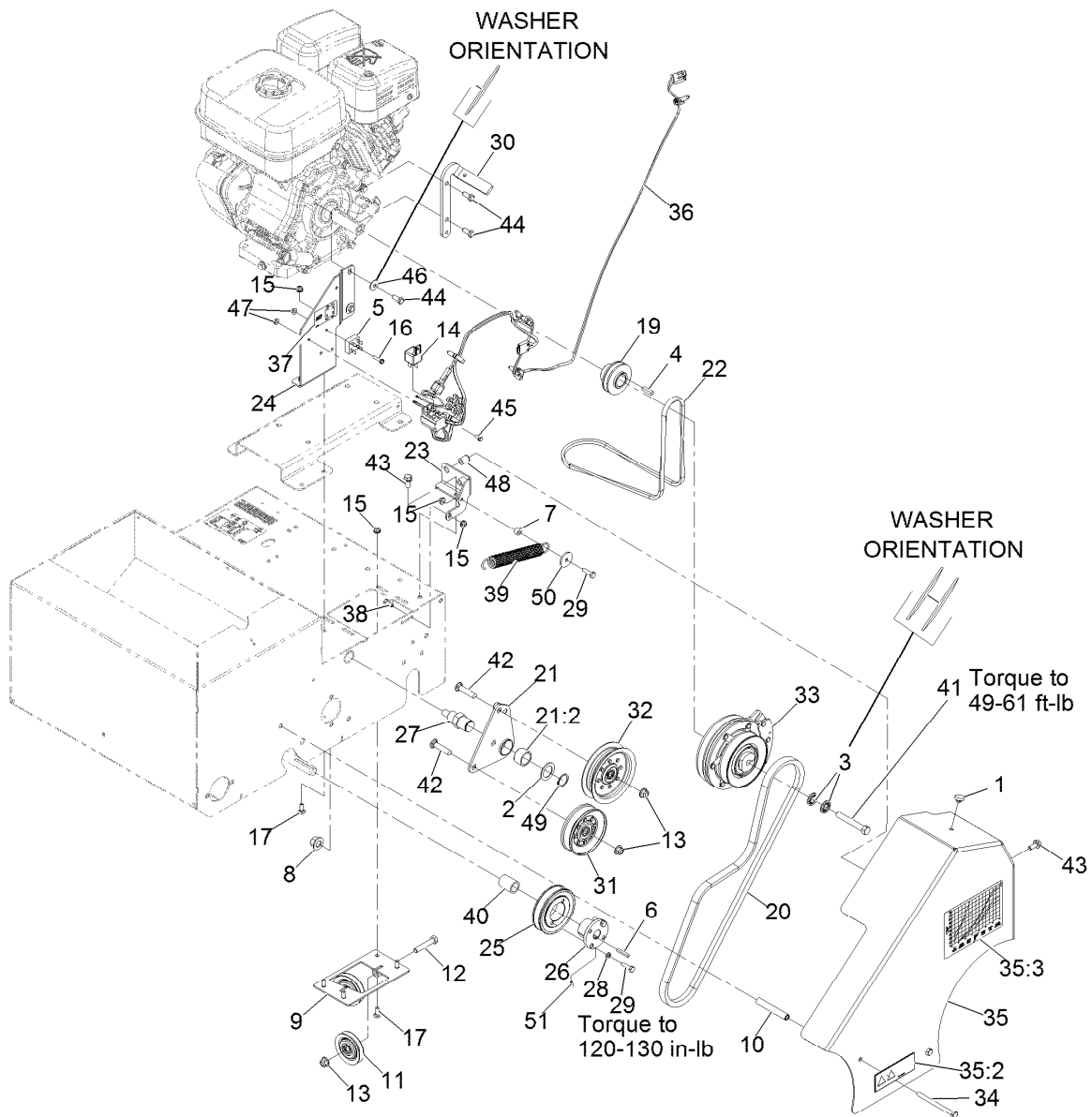
Seed Gate Assembly



Seed Gate Assembly (continued)

<i>Ref.</i>	<i>Part Number</i>	<i>Qty.</i>	<i>Description</i>	<i>Ref.</i>	<i>Part Number</i>	<i>Qty.</i>	<i>Description</i>
1	126-0815	1	Seed Gate Kit	13:2	121-6082	1	Wheel-Rim
1:1	126-0415	1	Gate-Seed	13:3	5108	1	Valve
1:2	126-0416	6	Spacer	14	32151-48	2	E-Ring
1:3	1-807512	6	Bolt-CARR	15	3256-39	4	Washer-Flat
1:4	114-3778	12	Nut-Lock, NI	16	321-3	1	Screw-HH ●
1:5	3229-2	3	Screw-CARR	17	3229-11	2	Screw-CARR
1:6	121-2016	2	Spring-Extension	18	104-8300	4	Nut-Flange, NI
7	121-1907	1	Bracket-Seed Flow	19	92-0049	2	Key-Square
8	121-1912	1	Gauge-Seed Flow	20	121-1961	2	Bearing
9	125-3782-03	1	Mixer	21	66-8010	2	Spacer-Hub, Impeller
10	121-1929	1	Axle-Front ■	22	3229-3	2	Screw-CARR
11	3230-23	4	Screw-CARR	23	233-67	1	Knob-Chute
12	105-3838	2	Spacer	24	103995	1	Washer
13	120-3550	2	Wheel ASM	25	104-7201	2	Nut-HF
13:1	121-6081	1	Tire	26	1-807512	1	Bolt-CARR

- Use Pro-Lock, Nut Type (P/N 1-840022, .5ml tube) on threads.
- Apply anti-seize compound to axle ends before installing tires.

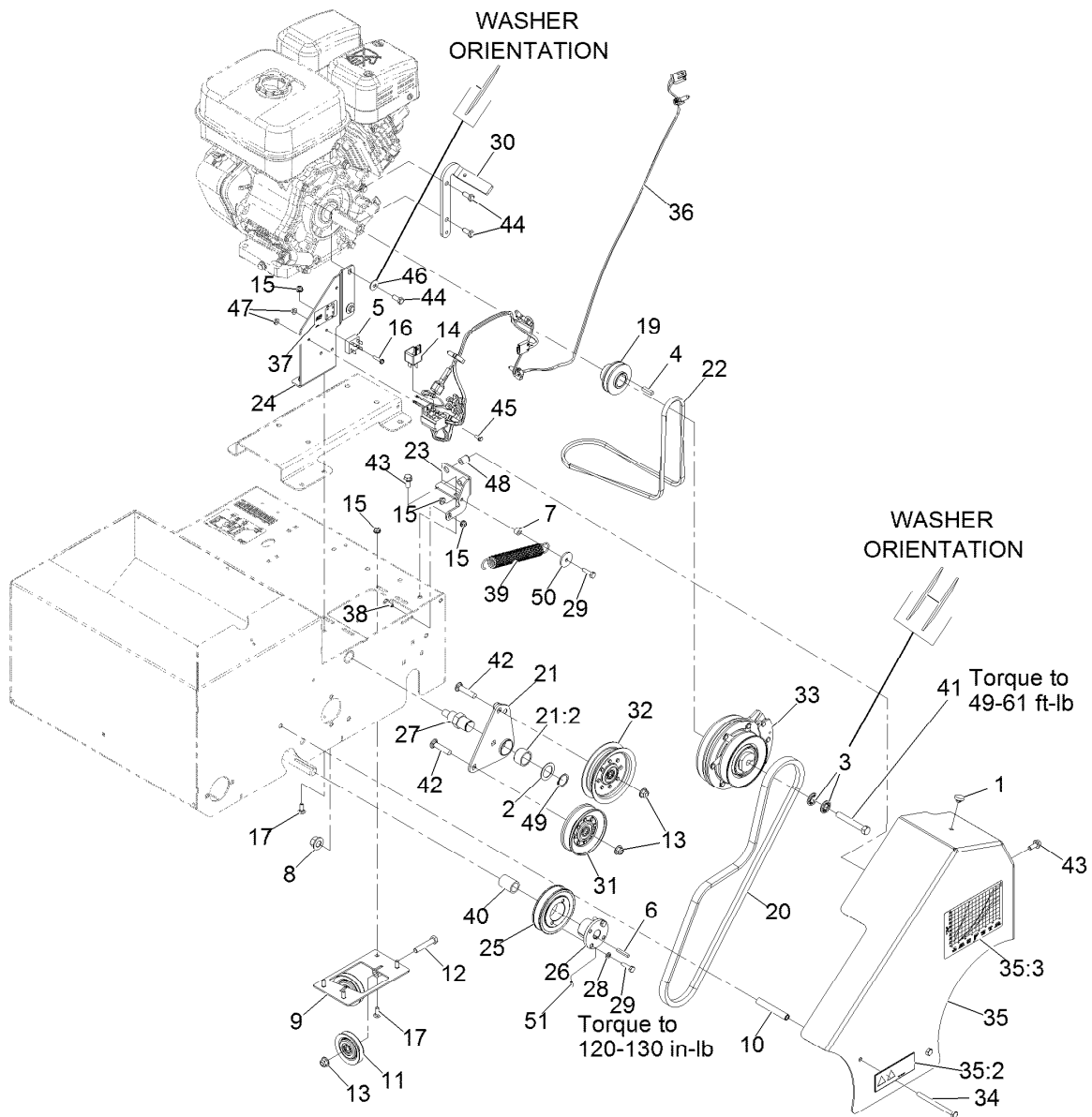


Belt Drive Assembly

Ref.	Part Number	Qty.	Description	Ref.	Part Number	Qty.	Description
1	1-513658	1	Bumper	19	116-9471	1	Pulley-Mule Drive
2	1-543436	1	Washer-Spacer	20	116-9518	1	Belt-Seeder, Clutch
3	1-603610	2	Washer-Spring Disc 7/16	21	116-9519	1	Idler Arm ASM
4	1-807259	1	Key-Machine 1/4 X 1/4 X 1	21:2	116-9538	1	Bushing
5	37-7600	1	Rectifier-Bridge	22	116-9532	1	Belt-Mule Drive
6	92-0049	1	Key-Machine 3/16 X 3/16 X 1 1/4	23	116-9533-01	1	Bracket-Spring
7	98-4799	1	Spacer	24	116-9534-01	1	Support-Engine
8	99-5107	1	Nut-Lock 1/2-13	25	121-2019	1	Sheave-Taper Lock
9	126-0418-03	1	Pulley-Tension	26	121-2022	1	Bushing-Taper Lock
10	104-0502	2	Spacer-Kickstand, Long	27	116-9539	1	Pivot-Idler
11	121-1965	2	Pulley-Idler	28	3253-3	2	Washer-Lock 1/4
12	323-10	2	Screw-HH 3/8-16 X 2	29	321-6	3	Screw-HH 1/4-20 X 1
13	104-8301	4	Nut-Nyloc 3/8-16 Flg	30	116-9551	1	Stop-Clutch
14	105-4145	1	Relay	31	116-9623	1	Pulley-Idler V
15	104-7201	8	Nut-Nyloc 1/4-20 Flg	32	116-9728	1	Pulley-Idler Flat (4.06-Inch)
16	106-9169	1	Screw-HWH	33	116-9852	1	Clutch-Electric
17	3229-1	6	Bolt-Carriage 1/4-20 X 3/4	34	322-19	2	Screw-HH 5/16-18 X 4
				35	116-9925	1	Belt Guard ASM

● Use Pro-Lock, Nut Type (P/N 1-840022, .5ml tube) on threads.

■ Use dielectric grease on all unsealed connectors and terminals only. Do not apply in sealed connectors.

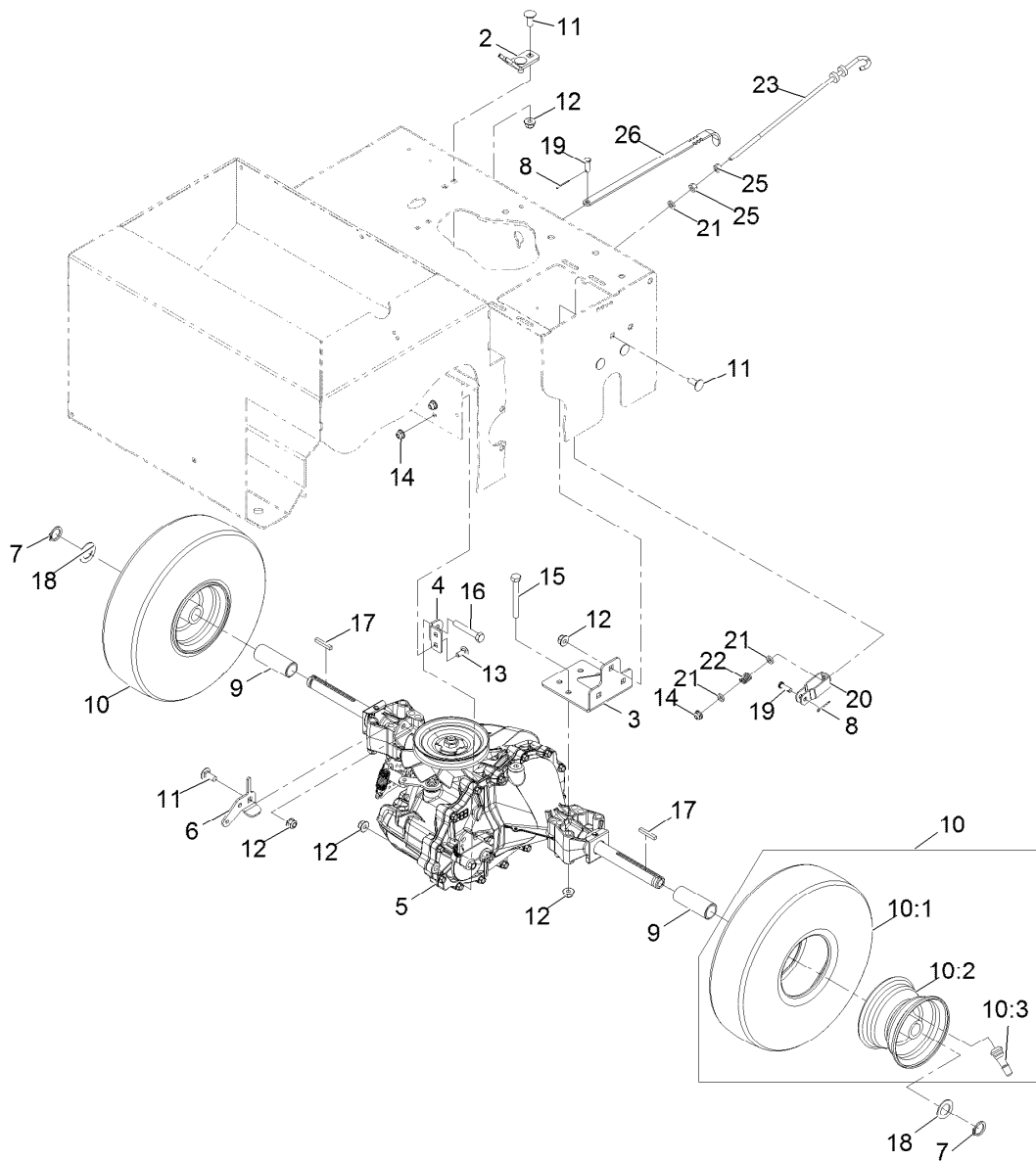


Belt Drive Assembly (continued)

Ref.	Part Number	Qty.	Description	Ref.	Part Number	Qty.	Description
35:2	93-7321	1	Decal-Danger	43	3234-47	3	Screw-HH Flg 5/16-18 X 3/4
35:3	116-8537	1	Decal-Seed Graph	44	3235-6	4	Screw-HH 5/16-24 X 3/4
36	116-9926	1	Harness-Slicer/Seeder ■	45	3290-321	1	Screw-HWH
37	116-9985	1	Decal-Bridge Rectifier	46	3290-456	2	Washer-Spring Disc
38	321-3	1	Screw-HH 1/4-20 X 5/8	47	32128-17	2	Nut-Flange #10-24 Top Lock
39	126-0091	1	Spring-Extension	48	32148-7	2	Nut-Insert
40	126-0108	1	Spacer	49	32151-29	1	Ring-Retaining
41	3212-12	1	Screw-HH 7/16-20 X 3 ●	50	103995	1	Washer
42	3231-29	2	Bolt-Carriage 3/8-16 X 1 3/4	51	126-0284	1	Screw-Set, Hs

● Use Pro-Lock, Nut Type (P/N 1-840022, .5ml tube) on threads.

■ Use dielectric grease on all unsealed connectors and terminals only. Do not apply in sealed connectors.



Transmission Assembly

Ref.	Part Number	Qty.	Description	Ref.	Part Number	Qty.	Description
2	121-1897	1	Bracket-Cable	13	3229-11	2	Bolt-Carriage 1/4-20 X 5/8
3	121-1901-03	2	Bracket-Axle	14	104-7201	3	Nut-Nyloc 1/4-20 Flg
4	121-1904	1	Bracket-Transaxle, Torque	15	322-13	8	Screw-HH 5/16-18 X 2 3/4
5	121-1908	1	Transaxle ASM ●	16	322-10	1	Screw-HH 5/16-18 X 2
6	121-1909	1	Bracket-Transaxle	17	92-0049	2	Key-Machine 3/16 X 3/16 X 1 1/4
7	32120-93	2	Ring-Retaining	18	67-9410	2	Washer
8	3272-4	2	Pin-Cotter	19	1-808265	2	Pin-Clevis 1/4 X 3/4
9	121-1988	2	Spacer	20	39-3080	1	Clevis
10	120-3550	2	Wheel ASM	21	55-9620	3	Spacer
10:1	121-6081	1	Tire	22	63-4220	1	Spring-Compression
10:2	121-6082	1	Wheel-Rim	23	121-2018	1	Rod-Brake
10:3	5108	1	Valve	25	3217-5	2	Nut-Hex 1/4-20
11	3230-23	9	Bolt-Carriage 5/16-18 X 3/4 Short Neck	26	121-2039	1	Lever-Bypass
12	104-8300	18	Nut-Nyloc 5/16-18 Flg				

● Apply anti-seize compound to axle ends before installing tires.

Notes:



Count on it.