



Count on it.

Parts Catalog

18in Turf Seeder

Model No. 23511—Serial No. 314000001 and Up

Model No. 33511—Serial No. 314000001 and Up



Ordering Replacement Parts

To order replacement parts, please supply the part number, the quantity, and the description of each part desired.

Understanding Reference Numbers

Each identified part in an illustration has a reference number. The reference number for a part also appears in the parts list, along with other information about the part.

This catalog uses two special reference number formats, one to indicate parts in a service assembly and another to indicate the quantity of a given part in an illustration.

Service Assembly Reference Numbers

Parts in service assemblies have reference numbers in the form a:b. The a represents the reference number of the entire service assembly and the b represents a sequential number unique to each part within the service assembly.

For example, a wheel assembly might be identified by reference number 6, the tire by 6:1, the valve by 6:2, and the wheel by 6:3. When you order the assembly identified by reference number 6, you receive all parts identified by reference numbers 6:1, 6:2, and 6:3. However, you may also order any part individually. Reference numbers of this type appear in illustration and in parts lists.

Reference Numbers Indicating Quantity

In an illustration, if a reference number indicates more than one part, the reference number has the form nX y. The n represents the quantity of the part, the X is the multiplication symbol, and the y represents the reference number.

For example, in an illustration, the reference number 2X 37 means that two of the parts identified by reference number 37 are indicated.

List of Abbreviations

AR: as required

ASM: assembly

BBC: blade brake control

BHTF: button head thread forming

CARR: carriage

CCW: counter clockwise

CW: clockwise

DEG: degrees

DPA: Dual Point Adjustment

ECM: electronic control module

EXT: external

FH: flat head

GA: gauge

HD: heavy-duty

HF: hex flange

HH: hex head

HHF: hex head flange

HHFTF: hex head flange thread forming

HJ: hex jam

HLH: hex lag head

HOC: height-of-cut

HSBH: hex socket button head

HSFH: hex socket flat head

HSH: hex socket head

HWH: hex washer head

HWHTF: hex washer head thread forming

HYD: hydraulic

LH: left hand

LP: Liquefied Petroleum Gas

LPG: Liquefied Petroleum Gas

NI: nylon insert

NPTF: national pipe thread fine

PFH: phillips flat head

PPH: phillips pan head

PPHTF: phillips pan head thread forming

PRH: phillips round head

PTH: phillips truss head

PTO: power-take-off

RH: right hand

ROPS: roll-over protection system

RRB: rear roller brush

SFH: slotted fillister head

SHH: slotted hex head

SHWH: slotted hex washer head

SPH: slotted pan head

SQH: square head

SRH: slotted round head

STD: standard

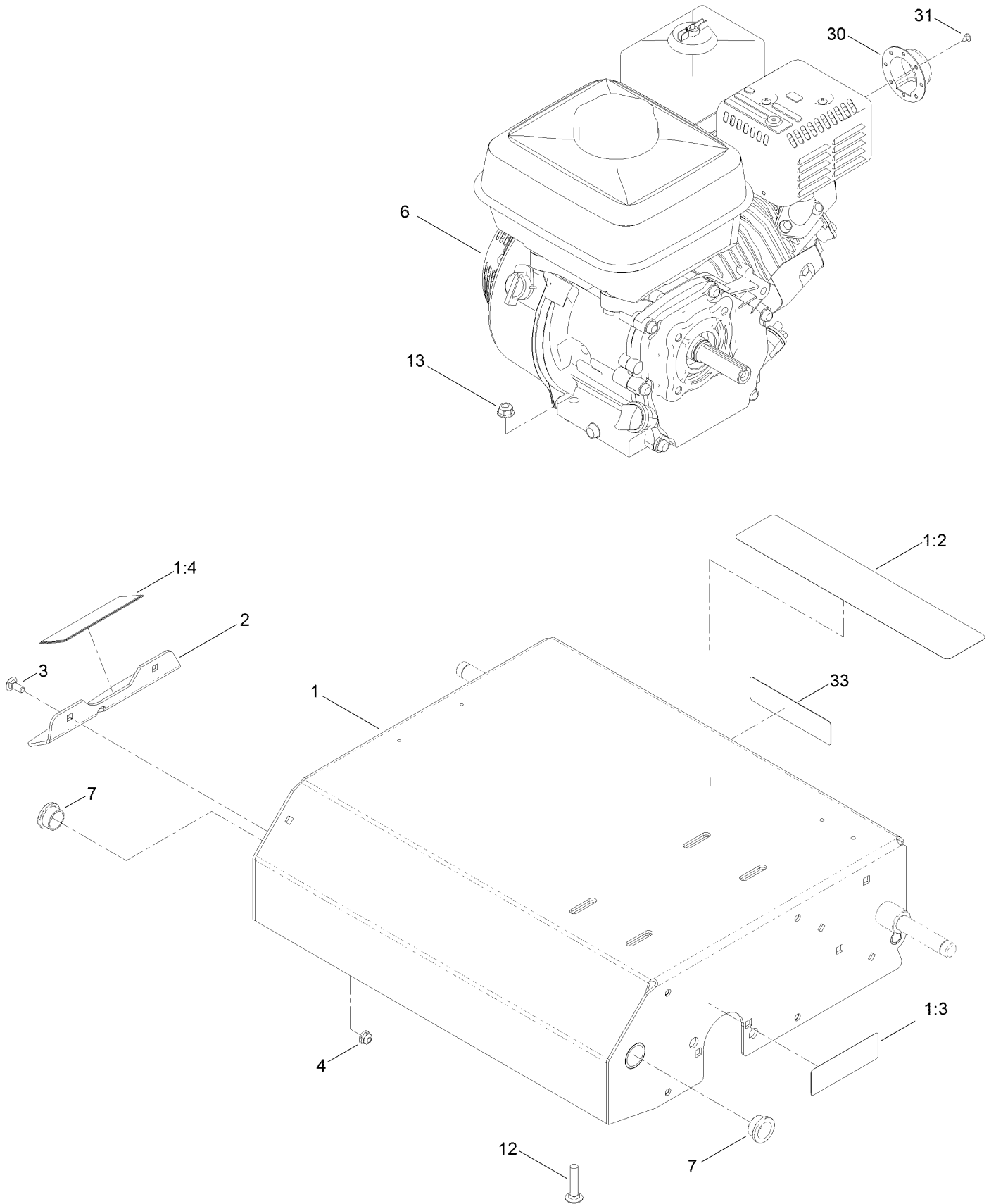
TAP: self tapping

TTH: torx truss head

Contents

- Engine and Frame Assembly 4
- Handle Assembly 6
- Bearing Assembly 8
- Wheel and Height Adjust Assembly 10
- Belt Drive Assembly 12

Engine and Frame Assembly



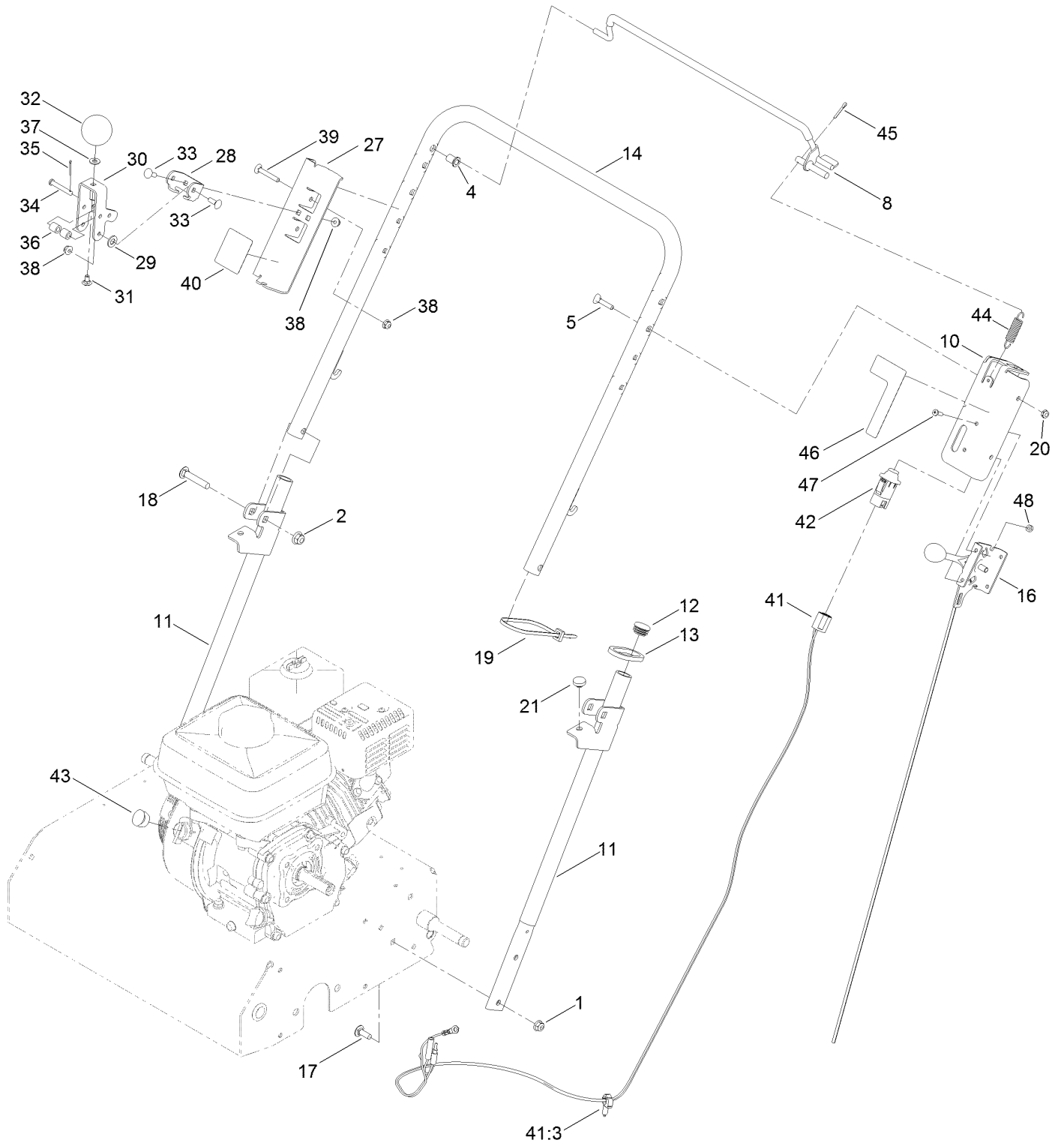
Engine and Frame Assembly (continued)

<i>Ref.</i>	<i>Part Number</i>	<i>Qty.</i>	<i>Description</i>	<i>Ref.</i>	<i>Part Number</i>	<i>Qty.</i>	<i>Description</i>
1	125-3825	1	Frame ASM	6		1	Engine-Honda, Gx160 ●■
1:2	125-3809	1	Decal-Warning	7	121-1876	2	Bushing
1:3	117-4979	1	Decal-Warning, Shields	12	3230-4	4	Screw-CARR
1:4	93-7321	1	Decal-Danger	13	104-8300	4	Nut-Flange, NI
2	121-1853-01	1	Guard-Hand	30	125-3866	1	Deflector
3	3229-11	2	Screw-CARR	31	120-1884	2	Screw-PPHTF
4	104-7201	2	Nut-HF	33	117-2718	1	Decal-Arrester, Spark

● Not serviced separately

■ Obtain parts from www.honda-engines.com

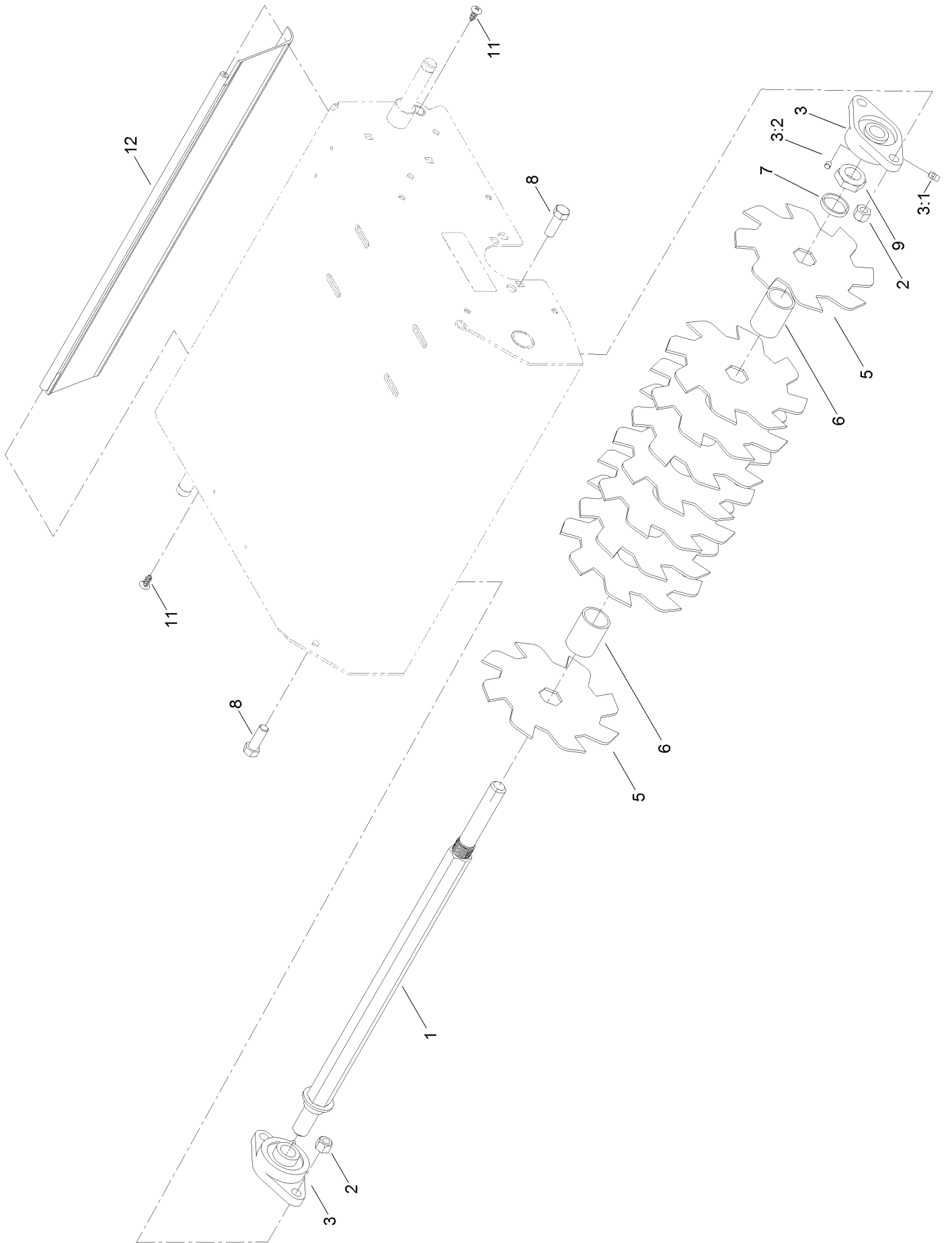
Handle Assembly



Handle Assembly (continued)

<i>Ref.</i>	<i>Part Number</i>	<i>Qty.</i>	<i>Description</i>	<i>Ref.</i>	<i>Part Number</i>	<i>Qty.</i>	<i>Description</i>
1	104-8300	4	Nut-Flange, NI	31	3229-10	1	Screw-CARR
2	104-8301	2	Nut-Flange, NI	32	121-1877	1	Knob-Rate, Flow
4	109-2713	2	Bushing	33	3229-1	4	Bolt-CARR
5	109-8144	2	Bolt-Handle	34	119-7499	1	Pin-Clevis
8	127-4026	1	Bail	35	3272-4	2	Pin-Cotter
10	127-4027-03	1	Bracket-Throttle	36	22-7810	2	Spacer
11	125-3621-03	2	Handle	37	3256-22	1	Washer-Flat
12	121-4870	2	Plug	38	104-7201	6	Nut-HF
13	121-6202	2	Ring-Handle Lock	39	3229-5	2	Screw-CARR
14	125-3800-03	1	Handle-Upper	40	125-3917	1	Decal-Seed Gate
16	127-4048	1	Cable-Throttle	41	127-4042	1	Harness-Wire
17	3230-10	4	Screw-CARR	41:3	32180-037	1	Clip-Harness
18	3231-6	2	Screw-CARR	42	100-1268	1	Switch-Plunger
19	3290-378	2	Tie-Cable	43	120-1887	1	Plug-Engine
20	3296-56	2	Nut-Lock, NI	44	121-4409	1	Spring-Extension
21	1-513658	2	Bumper	45	3272-10	1	Pin-Cotter
27	125-3620-03	1	Bracket-Adjust, Flow	46	127-4061	1	Decal-Throttle
28	121-1879	1	Bracket-Adjust, Flow	47	3290-500	2	Screw-PPH
29	3256-45	2	Washer-Flat	48	3296-2	2	Nut-Lock, NI
30	121-1878	1	Lever-Adjust, Flow				

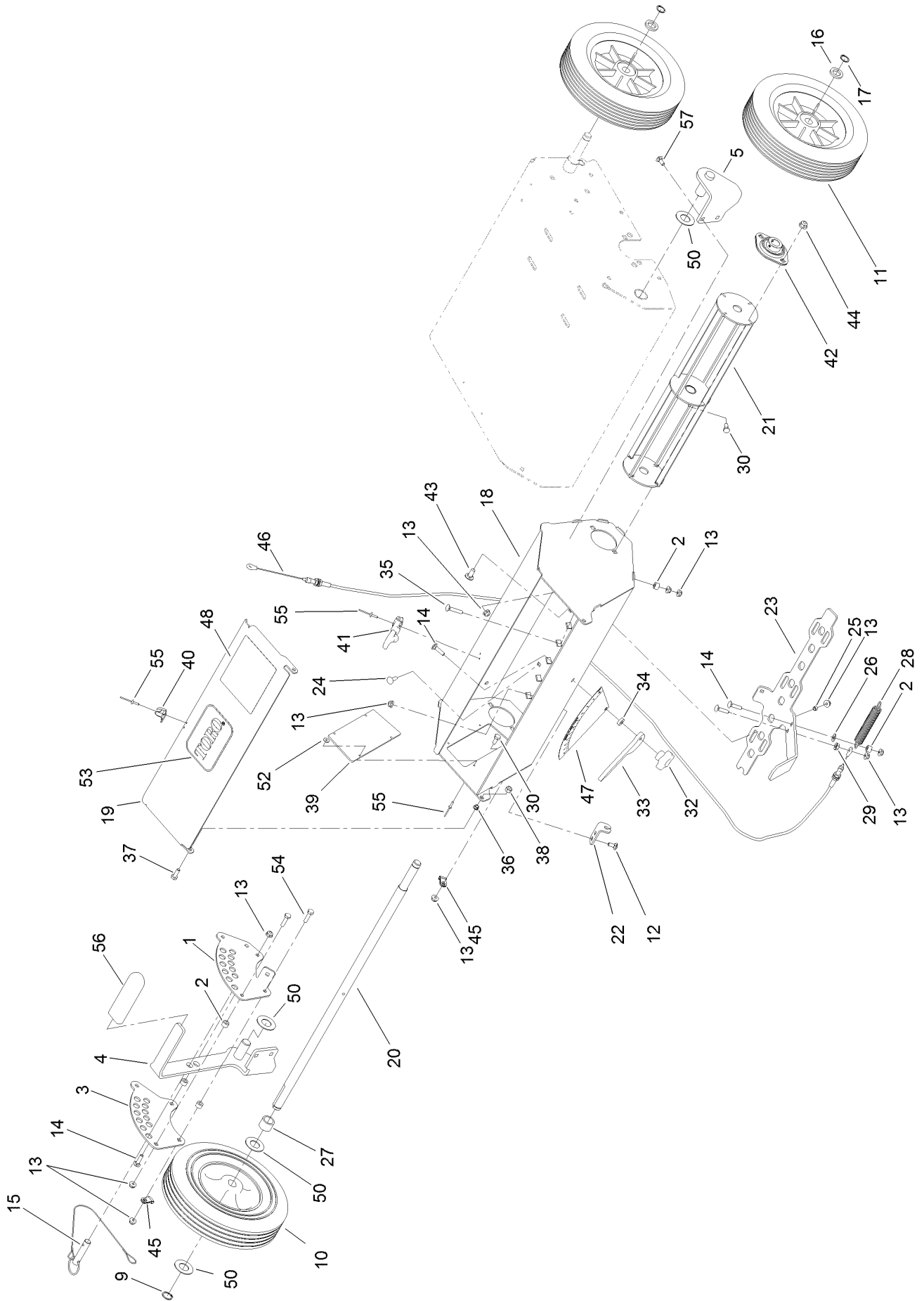
Bearing Assembly



Bearing Assembly (continued)

<i>Ref.</i>	<i>Part Number</i>	<i>Qty.</i>	<i>Description</i>	<i>Ref.</i>	<i>Part Number</i>	<i>Qty.</i>	<i>Description</i>
1	121-6124	1	Shaft	6	121-1933	8	Spacer
2	3296-48	4	Nut-Lock, NI	7	121-1934	1	Spacer-Retaining
3	106-7126	2	Bearing-Flange	8	324-5	4	Screw-HH
3:1	302-58	1	Fitting-Straight	9	3296-60	1	Nut-Lock, NI
3:2	3245-35	2	Screw-Set, HSH	11	117-1092	2	Screw-PTH
5	121-1931	9	Blade-Cutting, Seeder	12	120-6241	1	Shield-Trailing

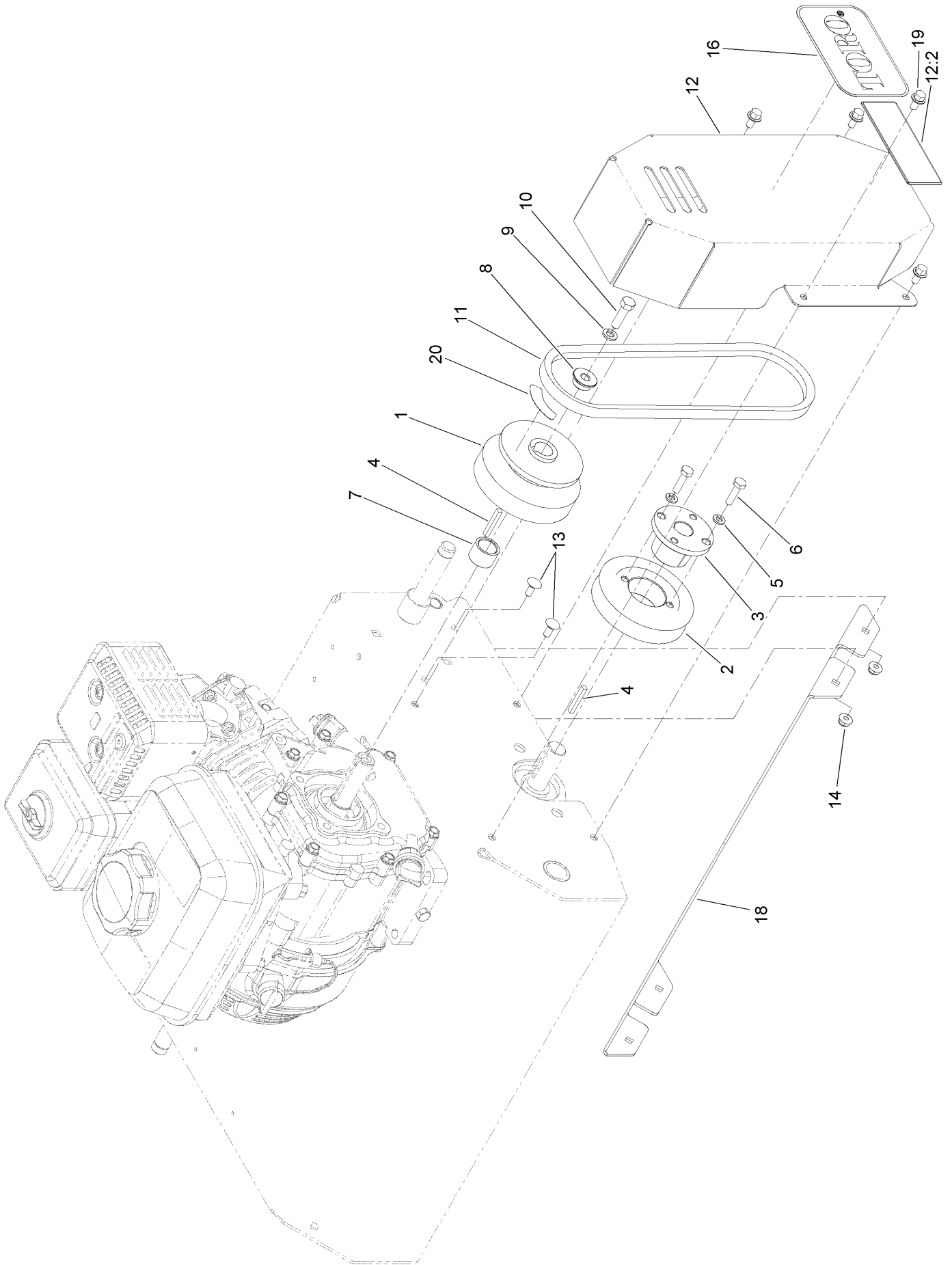
Wheel and Height Adjust Assembly



Wheel and Height Adjust Assembly (continued)

<i>Ref.</i>	<i>Part Number</i>	<i>Qty.</i>	<i>Description</i>	<i>Ref.</i>	<i>Part Number</i>	<i>Qty.</i>	<i>Description</i>
1	121-1854	1	Bracket	30	321-3	2	Screw-HH
2	98-4799	8	Spacer	32	108-6402	1	Knob-Handle
3	121-1856	1	Plate	33	121-1912	1	Gauge-Seed Flow
4	125-3599-03	1	Bracket-Adjust, Height	34	106-8189	1	Spacer
5	125-3600-03	1	Bracket-Wheel	35	3229-3	2	Screw-CARR
9	32120-72	1	Ring-Snap	36	119-2404	2	Bushing-Flange, Split
10	125-3604	1	Wheel	37	321-4	2	Screw-HH
11	121-4897	3	Wheel-Transport	38	3296-42	2	Nut-Lock, NI
12	3229-11	4	Screw-CARR	39	125-3618	1	Window-Seeder Box
13	104-7201	25	Nut-HF	40	1-643189	1	Keeper-Latch, Rubber
14	3229-2	5	Screw-CARR	41	1-643188	1	Latch-Rubber
15	104-3678	1	Pin-Hitch	42	121-1961	2	Bearing
16	63-9710	3	Spacer-Bearing	43	3230-23	4	Screw-CARR
17	32120-64	3	Ring-Snap, External	44	104-8300	4	Nut-Flange, NI
18	125-3590-01	1	Box-Seeder	45	2412-149	1	Clamp-Hose
19	125-3610-01	1	Cover-Seedbox	46	121-6218	1	Cable-Gate, Seed
20	125-3598	1	Shaft-Agitator	47	119-4655	1	Decal-Rate, Flow
21	121-6138-03	1	Mixer	48	116-8537	1	Decal-Seed Graph
22	121-1907	1	Bracket-Seed Flow	50	3256-39	4	Washer-Flat
23	125-3601-03	1	Gate-Seed	52	3269-10	4	Washer-Back
24	1-807512	6	Bolt-CARR	53	67-1300	1	Decal
25	121-2015	6	Spacer	54	321-6	2	Screw-HH
26	3256-22	2	Washer-Flat	55	3290-274	8	Rivet-Pop
27	83-0730	1	Spacer-Lockup	56	1-633268	1	Grip-Lever
28	121-2016	2	Spring-Extension	57	3229-1	4	Bolt-CARR
29	32128-33	1	Nut-HF				

Belt Drive Assembly



Belt Drive Assembly (continued)

<i>Ref.</i>	<i>Part Number</i>	<i>Qty.</i>	<i>Description</i>	<i>Ref.</i>	<i>Part Number</i>	<i>Qty.</i>	<i>Description</i>
1	120-1215	1	Clutch-Centrifugal	11	53-4650	1	V-Belt
2	121-2019	1	Sheave-Taper Lock	12	125-3827	1	Belt Guard ASM
3	121-2022	1	Bushing-Taper Lock	12:2	93-7321	1	Decal-Danger
4	92-2649	2	Key-Square	13	3229-11	4	Screw-CARR
5	3253-3	2	Washer-Lock	14	104-7201	4	Nut-HF
6	321-6	2	Screw-HH	16	67-1300	1	Decal
7	121-7731	1	Spacer	18	121-6235-01	1	Baffle-Deflector
8	121-7732	1	Bushing	19	3234-13	4	Screw-HHF
9	3253-4	1	Washer-Lock	20	125-3897	1	Decal-Warning
10	3210-6	1	Screw-HH				

Notes:

Notes:



Count on it.