



Count on it.

Parts Catalog

Eductor Kit

Multi-Pro® 5800 Turf Sprayer

Model No. 41612—Serial No. 314000001 and Up



Ordering Replacement Parts

To order replacement parts, please supply the part number, the quantity, and the description of each part desired.

Understanding Reference Numbers

Each identified part in an illustration has a reference number. The reference number for a part also appears in the parts list, along with other information about the part.

This catalog uses two special reference number formats, one to indicate parts in a service assembly and another to indicate the quantity of a given part in an illustration.

Service Assembly Reference Numbers

Parts in service assemblies have reference numbers in the form a:b. The a represents the reference number of the entire service assembly and the b represents a sequential number unique to each part within the service assembly.

For example, a wheel assembly might be identified by reference number 6, the tire by 6:1, the valve by 6:2, and the wheel by 6:3. When you order the assembly identified by reference number 6, you receive all parts identified by reference numbers 6:1, 6:2, and 6:3. However, you may also order any part individually. Reference numbers of this type appear in illustration and in parts lists.

Reference Numbers Indicating Quantity

In an illustration, if a reference number indicates more than one part, the reference number has the form nX y. The n represents the quantity of the part, the X is the multiplication symbol, and the y represents the reference number.

For example, in an illustration, the reference number 2X 37 means that two of the parts identified by reference number 37 are indicated.

List of Abbreviations

AR: as required

ASM: assembly

BBC: blade brake control

BHTF: button head thread forming

CARR: carriage

CCW: counter clockwise

CW: clockwise

DEG: degrees

DPA: Dual Point Adjustment

ECM: electronic control module

EXT: external

FH: flat head

GA: gauge

HD: heavy-duty

HF: hex flange

HH: hex head

HHF: hex head flange

HHFTF: hex head flange thread forming

HJ: hex jam

HLH: hex lag head

HOC: height-of-cut

HSBH: hex socket button head

HSFH: hex socket flat head

HSH: hex socket head

HWH: hex washer head

HWHTF: hex washer head thread forming

HYD: hydraulic

LH: left hand

LP: Liquefied Petroleum Gas

LPG: Liquefied Petroleum Gas

NI: nylon insert

NPTF: national pipe thread fine

PFH: phillips flat head

PPH: phillips pan head

PPHTF: phillips pan head thread forming

PRH: phillips round head

PTH: phillips truss head

PTO: power-take-off

RH: right hand

ROPS: roll-over protection system

RRB: rear roller brush

SFH: slotted fillister head

SHH: slotted hex head

SHWH: slotted hex washer head

SPH: slotted pan head

SQH: square head

SRH: slotted round head

STD: standard

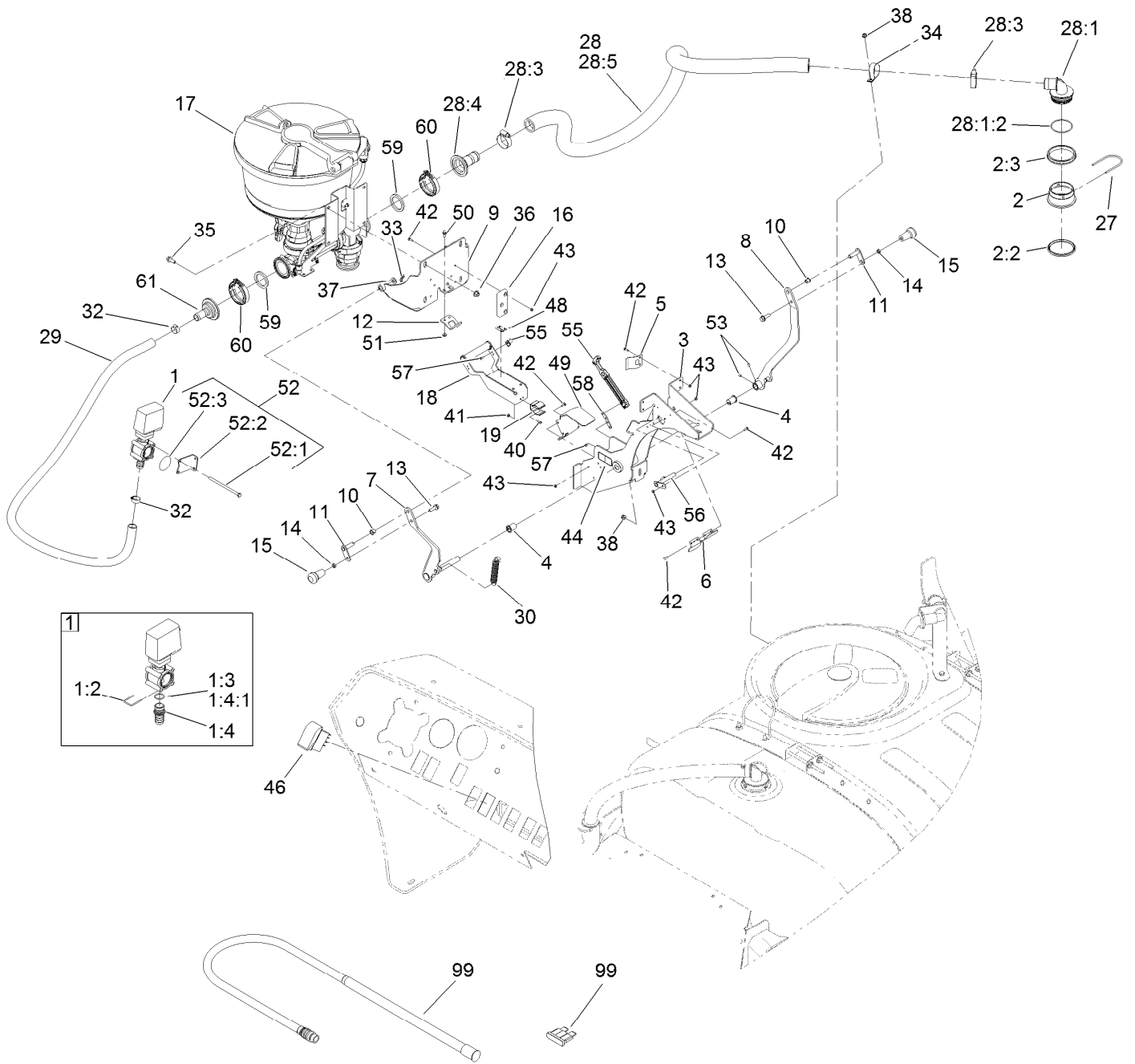
TAP: self tapping

TTH: torx truss head

Contents

Eductor Kit..... 4
Eductor Assembly No. 127-2949..... 6

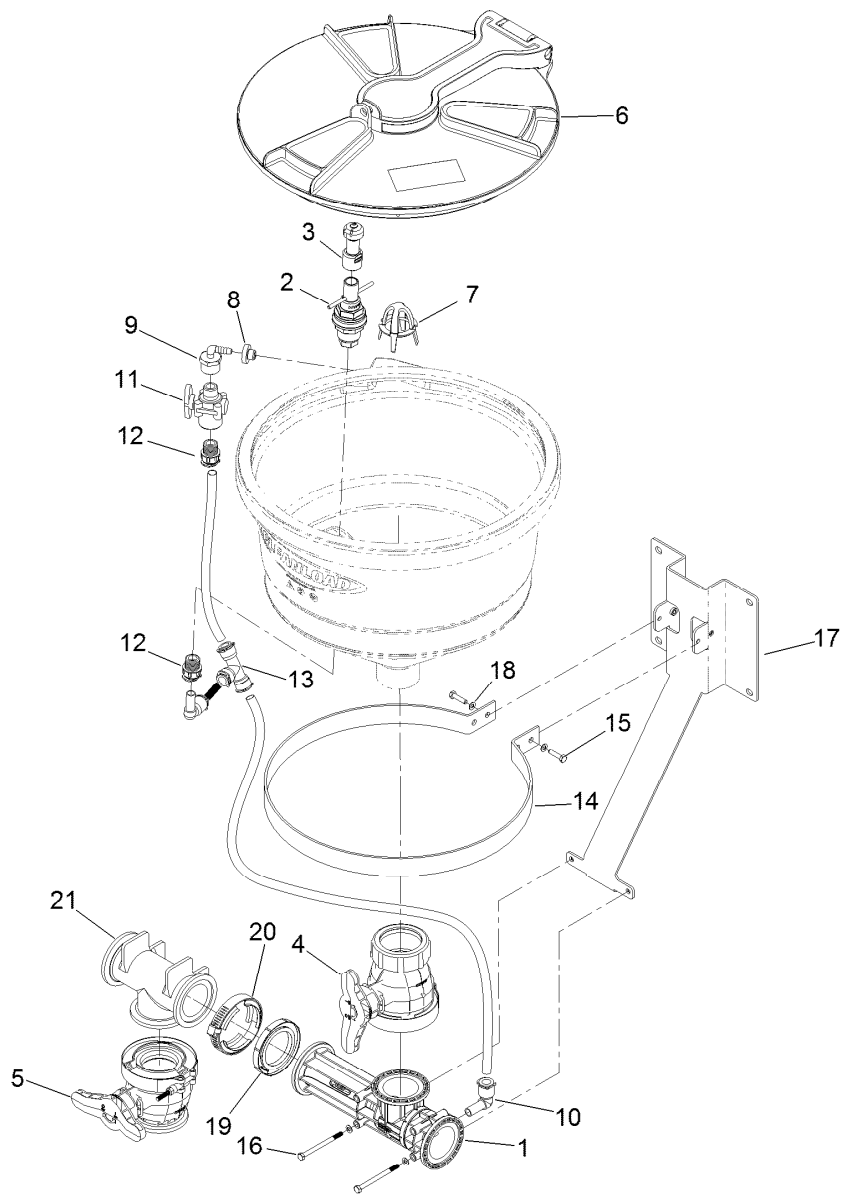
Eductor Kit



Eductor Kit (continued)

<i>Ref.</i>	<i>Part Number</i>	<i>Qty.</i>	<i>Description</i>	<i>Ref.</i>	<i>Part Number</i>	<i>Qty.</i>	<i>Description</i>
1	119-0488	1	Valve ASM	30	120-0722	2	Spring-Extension
1:2	119-4862	1	Fork	32	2412-34	2	Clamp-Hose
1:3	119-4868	1	O-Ring	33	3290-467	2	Pin-Hair
1:4	117-7992	1	Hosebarb	34	2412-96	1	Clamp-R
1:4:1	119-4868	1	O-Ring	35	3234-11	4	Screw-HHF
2	117-7851	1	Bulkhead ASM	36	32128-43	4	Nut-Flange
2:2	100-8646	1	Gasket-Bulkhead	37	106-9888	2	Washer-Flat
2:3	100-8647	1	Nut-Bulkhead	38	104-8300	2	Nut-Flange, NI
3	120-8643-03	1	Eductor-Mount	40	3250-12	2	Screw-PPH
4	100-8541	2	Bushing-A Arm	41	3296-2	2	Nut-Lock, NI
5	119-4951	2	Tab-Spring	42	1-807533	19	Bolt-CARR
6	119-4962	1	Plate-Strike	43	3296-12	21	Nut-Lock, NI
7	119-4907-03	1	Arm-Pivot, LH	44	93-6674	2	Decal-Warning
8	119-4908-03	1	Arm-Pivot, RH	46	100-8490	1	Switch-Rocker
9	119-4912-03	1	Plate-Pivot	48	119-4988	1	Decal-Lock
10	256-257	2	Bushing-Nyliner	49	125-5891	1	Plate-Guide
11	120-0718	2	Pivot-Pin	50	3234-4	2	Screw-HHF
12	119-4928	1	Bracket-Latch	51	32128-33	2	Nut-HF
13	3234-24	2	Screw-HHF	52		1	Bracket Mounting Kit ●
14	3218-3	2	Nut-Jam	52:1	119-4879	4	Screw-HH
15	99-7981	2	Knob-Grip, Soft	52:2	119-4952	1	Bracket-Mount
16	119-4963	2	Pad-Wear	52:3	119-4870	1	O-Ring
17	127-2949	1	Eductor ASM	53	3245-41	2	Screw-HSH
18	127-5000-03	1	Handle-Eductor	55	115-8215	1	Draw Latch ASM
19	119-4937	1	Clip-Spring	56	120-8640	1	Latch-Rod
27	117-7996	1	Fork	57	115-9830	5	Screw-HSBH
28		1	Eductor Hose ASM ●	58	125-5892-03	1	Tab-Extension
28:1	117-7870	1	Hosebarb ASM	59	127-5004	2	Gasket
28:1:2	100-6989	1	O-Ring	60	127-5005	2	Clamp-Worm Screw
28:3	41327	2	Clamp-Hose	61	125-5894	1	Fitting-Hose Barb
28:4	125-5895	1	Fitting-Hose Barb	99	127-9826	1	Lance Suction ASM
28:5	130-8283	1	Hose-Eductor	99	218-578	1	Fuse-Blade, 10 Amp
29	130-8279	1	Eductor Hose ASM				

● Not serviced separately



Eductor Assembly No. 127-2949

<i>Ref.</i>	<i>Part Number</i>	<i>Qty.</i>	<i>Description</i>	<i>Ref.</i>	<i>Part Number</i>	<i>Qty.</i>	<i>Description</i>
1	127-5027	1	Eductor	12	127-5049	2	Fitting
2	127-5042	1	Container-Rinse	13	127-6906	1	Fitting-Tee
3	127-5048	1	Nozzle-Rinse Container	14	127-5030	1	Ring-Mounting
4	127-6934	1	Valve-Tank	15	127-6922	2	Screw-HH
5	127-6923	1	Valve-Drain	16	127-5031	2	Screw-HH
6	127-6916	1	Lid	17	127-5029	1	Bracket
7	127-6939	1	Strainer	18	127-6938	4	Washer
8	127-6900	1	Grommet	19	127-6932	1	Gasket
9	127-6904	1	Elbow-Fitting	20	127-5005	1	Clamp-Worm Screw
10	127-6903	2	Elbow-Fitting	21	127-6941	1	Fitting-Tee
11	127-6905	1	Valve-Two Way				

Notes:



Count on it.