



Count on it.

Parts Catalog

41cm Electric Lawn Mower

Model No. 21141—Serial No. 314000001 and Up



Ordering Replacement Parts

To order replacement parts, please supply the part number, the quantity, and the description of each part desired.

Understanding Reference Numbers

Each identified part in an illustration has a reference number. The reference number for a part also appears in the parts list, along with other information about the part.

This catalog uses two special reference number formats, one to indicate parts in a service assembly and another to indicate the quantity of a given part in an illustration.

Service Assembly Reference Numbers

Parts in service assemblies have reference numbers in the form a:b. The a represents the reference number of the entire service assembly and the b represents a sequential number unique to each part within the service assembly.

For example, a wheel assembly might be identified by reference number 6, the tire by 6:1, the valve by 6:2, and the wheel by 6:3. When you order the assembly identified by reference number 6, you receive all parts identified by reference numbers 6:1, 6:2, and 6:3. However, you may also order any part individually. Reference numbers of this type appear in illustration and in parts lists.

Reference Numbers Indicating Quantity

In an illustration, if a reference number indicates more than one part, the reference number has the form nX y. The n represents the quantity of the part, the X is the multiplication symbol, and the y represents the reference number.

For example, in an illustration, the reference number 2X 37 means that two of the parts identified by reference number 37 are indicated.

List of Abbreviations

AR: as required

ASM: assembly

BBC: blade brake control

BHTF: button head thread forming

CARR: carriage

CCW: counter clockwise

CW: clockwise

DEG: degrees

DPA: Dual Point Adjustment

ECM: electronic control module

EXT: external

FH: flat head

GA: gauge

HD: heavy-duty

HF: hex flange

HH: hex head

HHF: hex head flange

HHFTF: hex head flange thread forming

HJ: hex jam

HLH: hex lag head

HOC: height-of-cut

HSBH: hex socket button head

HSFH: hex socket flat head

HSH: hex socket head

HWH: hex washer head

HWHTF: hex washer head thread forming

HYD: hydraulic

LH: left hand

LP: Liquefied Petroleum Gas

LPG: Liquefied Petroleum Gas

NI: nylon insert

NPTF: national pipe thread fine

PFH: phillips flat head

PPH: phillips pan head

PPHTF: phillips pan head thread forming

PRH: phillips round head

PTH: phillips truss head

PTO: power-take-off

RH: right hand

ROPS: roll-over protection system

RRB: rear roller brush

SFH: slotted fillister head

SHH: slotted hex head

SHWH: slotted hex washer head

SPH: slotted pan head

SQH: square head

SRH: slotted round head

STD: standard

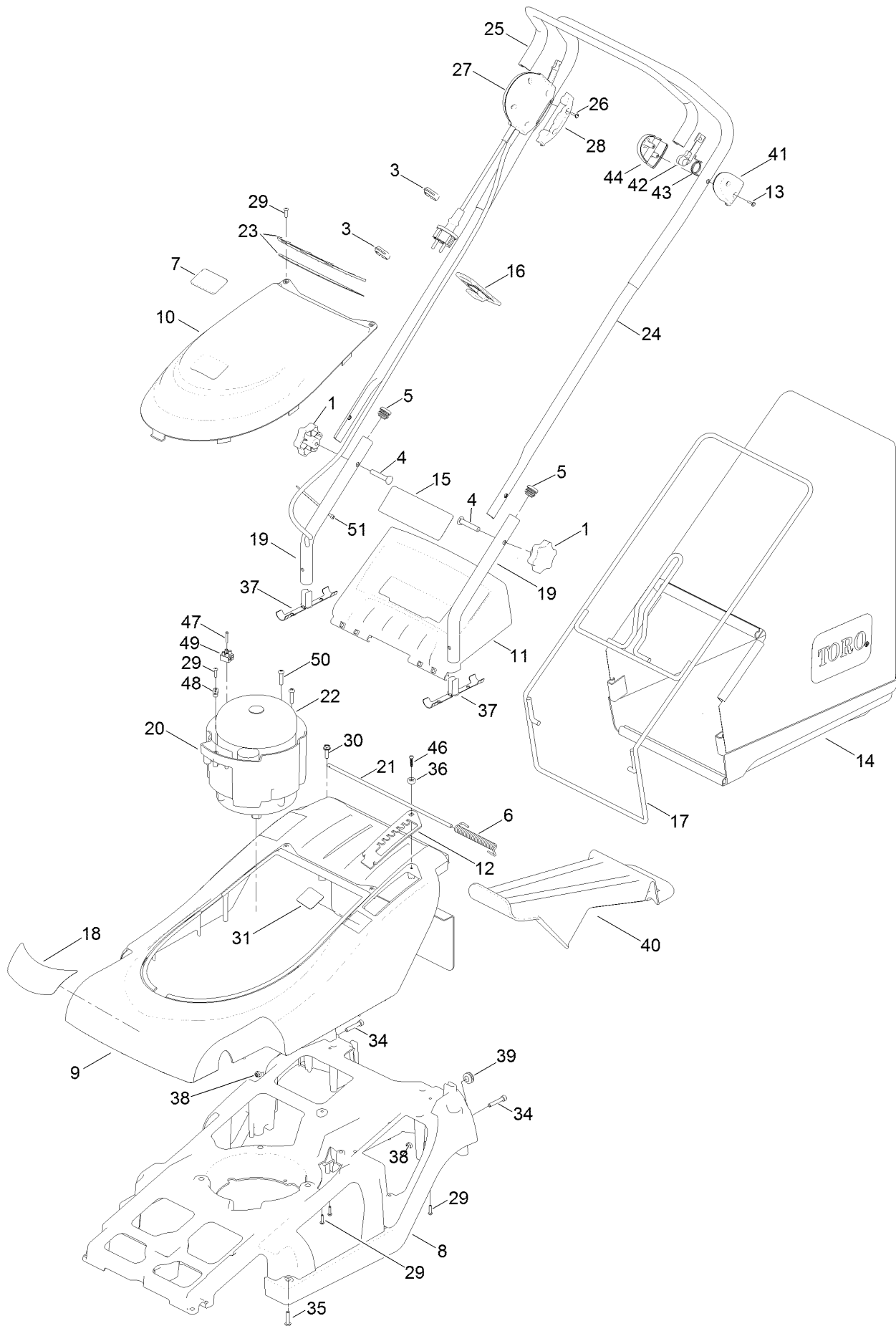
TAP: self tapping

TTH: torx truss head

Contents

Upper Assembly 4
Lower Assembly 6

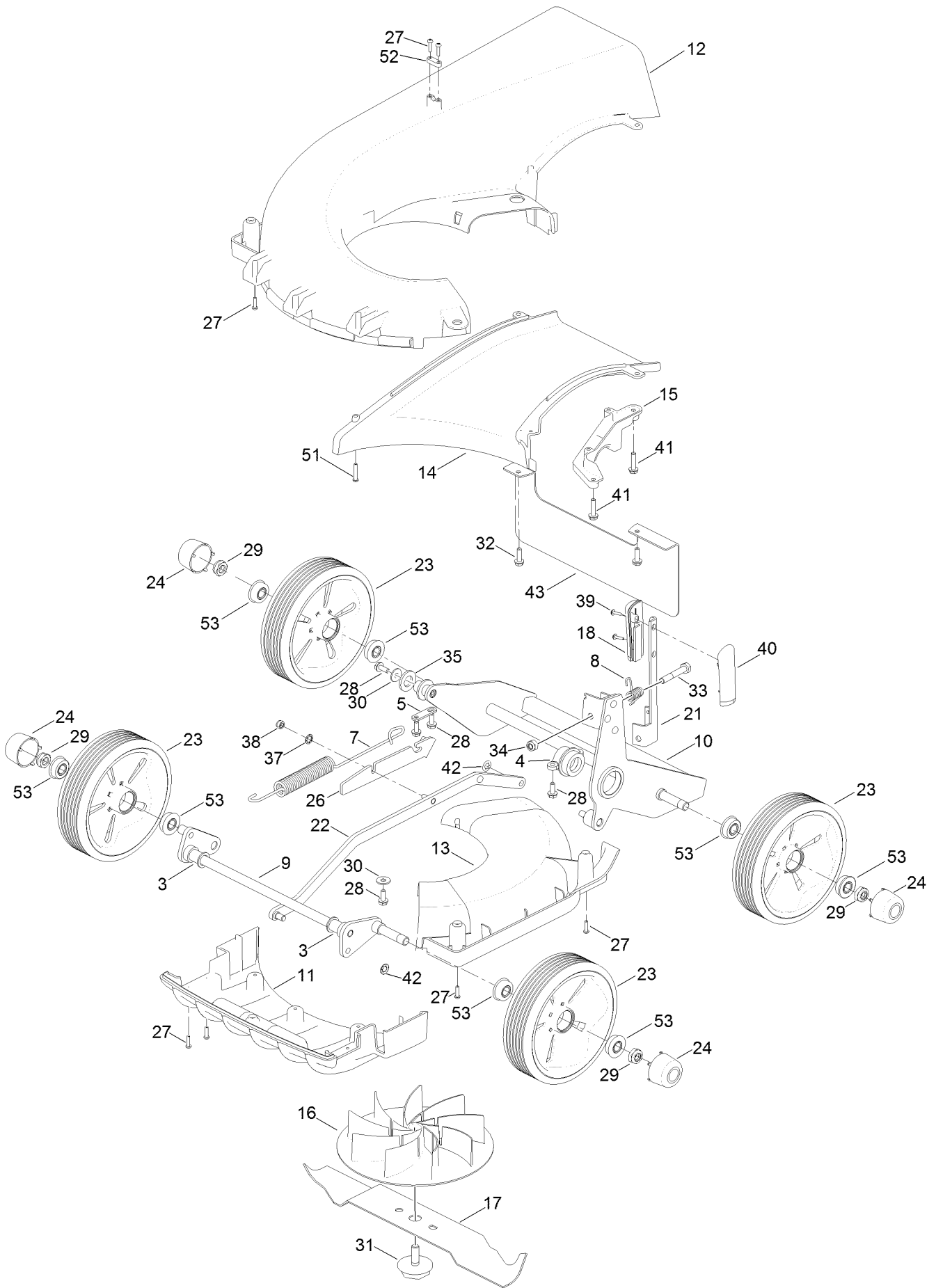
Upper Assembly



Upper Assembly (continued)

<i>Ref.</i>	<i>Part Number</i>	<i>Qty.</i>	<i>Description</i>	<i>Ref.</i>	<i>Part Number</i>	<i>Qty.</i>	<i>Description</i>
1	480088	2	Knob-Handlebar	25	HY100017	1	Arm-Bail
3	100023	2	Clip-Cable	26	HY100078	5	Screw
4	HY226024	2	Bolt-Handlebar	27	111-4070	1	Switch And Lead ASM
5	300160	2	Plug-Tube	28	HY100021	1	Switch-Left, Lower
6	410030	1	Spring-Deflector	29	111-0094	7	Screw
7	111-4977	1	Decal-Toro	30	09575	2	Screw-Taptite
8	111-0031-07	1	Chassis	31	320006	1	Decal-HOC
9	111-3978	1	Top-Cover	34	111-0118	2	Screw-Socket
10	111-3977	1	Cover-Motor	35	111-6841	3	Screw
11	111-1043	1	Moulding-Deflector, Rear	36	111-0107	1	Cup-Screw, Electric
12	111-0040	1	Plate-HOC	37	111-0960	2	Plug-Handlebar
13	HY100128	1	Screw-PPH, Thread Forming	38	09438	2	Nut-Nyloc
14	111-4025	1	Grassbag	39	111-2155	1	Grommet-Rubber
15	111-5173	1	Decal-Safety Electric	40	111-4382	1	Plug-Mulching
16	100105	1	Cleat-Cable	41	100085	1	Mount Left
17	111-0045-03	1	Frame-Grassbag	42	HY100088	1	Lever Mount
18	111-4073	1	Decal	43	HY100087	1	Spring Bailarm
19	111-0051-03	2	Handlebars-Lower	44	100086	1	Mount Right
20	111-0052	1	Moulding-Mount, Electric Motor	46	111-6806	1	Screw-Plastite
21	111-0056	1	Bar-Hinge	47	111-0106	1	Screw
22	309052	1	Motor-Induction, 1.5Kw	48	111-0117	1	Clamp-Cable
23	111-0074	1	Vent Mesh ASM	49	HY100077	1	Block-Terminal
24	111-0091	1	Handlebars-Electric	50	111-0115	4	Screw
				51	HY3966	1	Tie-Cable

Lower Assembly



Lower Assembly (continued)

<i>Ref.</i>	<i>Part Number</i>	<i>Qty.</i>	<i>Description</i>	<i>Ref.</i>	<i>Part Number</i>	<i>Qty.</i>	<i>Description</i>
3	410069	2	Bearing-Axle, Front	26	111-0073	1	Mount-Spring
4	410048	1	Housing-Pivot Bearing, LH	27	111-0094	16	Screw
5	219037	1	Plate-Securing	28	09365	6	Screw-Taptite
7	410050	1	Spring-Counter Balance	29	111-0119	4	Nut-Nyloc
8	111-0078	1	Spring-HOC	30	09262	2	Washer
9	111-0027	1	Axle-Front	31	111-0099	1	Bolt-Fixing, Blade
10	111-0068-03	1	Frame-Wheel	32	09575	2	Screw-Taptite
11	111-0034	1	Moulding-Fin	33	ZBH1H050U	1	Bolt
12	111-0037	1	Moulding-Snail Deck	34	09441	1	Nut-Hex, NI
13	111-0038	1	Moulding-Access, Snail Deck	35	09491	2	Washer-Plain
14	111-0039	1	Moulding-Throw Plate	37	09472	1	Washer-Plain
15	111-0050	1	Mount-Bearing	38	09438	1	Nut-Nyloc
16	111-0053	1	Moulding-Mount, Electric Blade	39	HY100078	2	Screw
17	111-0054	1	Cutterbar-Electric	40	111-0105	1	Knob-HOC, LH
18	111-0055	1	Knob-HOC, RH	41	09364	2	Screw-HH
21	111-0059	1	Lever-HOC	42	0201086	2	Washer-Starlock
22	111-0063	1	Rod-Connecting Bar	43	111-4952-03	1	Guard-Rear
23	111-4036	4	Wheel ASM	51	111-0100	1	Screw
24	111-0066	4	Cap-Wheel, Center	52	111-0117	1	Clamp-Cable
				53	111-1010	8	Bearing



Count on it.