



Finishing Kit

Foam Marker for Multi Pro 5800 Turf Sprayer

Model No. 127-9797

Installation Instructions

Note: The Foam Marker Kit is required for the installation of this product. Contact your Authorized Toro Dealer for more information.

⚠ WARNING

CALIFORNIA Proposition 65 Warning

This product contains a chemical or chemicals known to the State of California to cause cancer, birth defects, or reproductive harm.

Installation

Loose Parts

Use the chart below to verify that all parts have been shipped.

Procedure	Description	Qty.	Use
1	Foam marker (sold separately)	1	Attach the foam marker (sold separately).
	Bolts (1/4 inch)	4	
	Nuts (1/4 inch)	4	
	Washers	4	
2	Foam-marker bracket	1	Install the finishing kit bracket.
	Nuts (5/16 inch)	4	
	Bolts (5/16 inch)	4	
3	Switches	2	Install the switches.



1

Attaching the Foam Marker (Sold Separately)

Parts needed for this procedure:

1	Foam marker (sold separately)
4	Bolts (1/4 inch)
4	Nuts (1/4 inch)
4	Washers

Procedure

Secure the foam marker to the bracket using the 4 bolts and 4 nuts as shown in Figure 1.

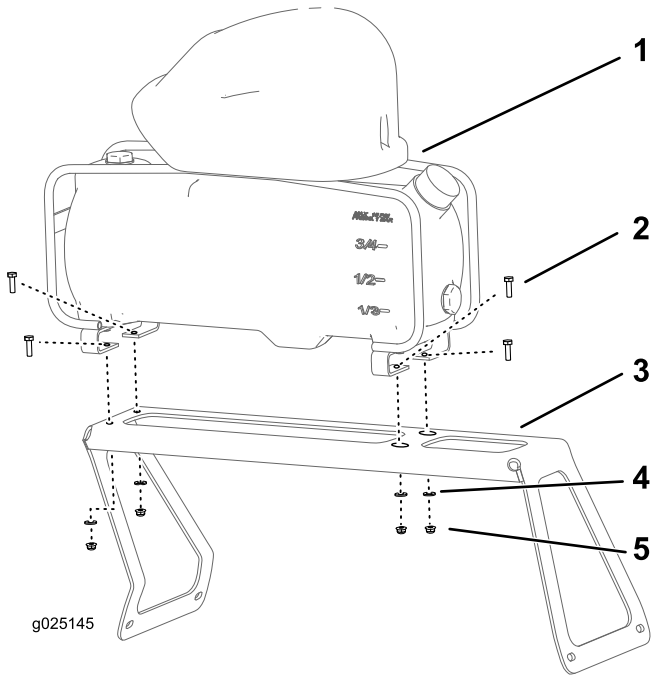


Figure 1

- 1. Foam-marker tank (sold separately)
- 2. Bolts (1/4 inch)
- 3. Bracket
- 4. Washers
- 5. Nuts (1/4 inch)

2

Installing the Finishing-kit Bracket

Parts needed for this procedure:

1	Foam-marker bracket
4	Nuts (5/16 inch)
4	Bolts (5/16 inch)

Procedure

1. Remove the existing hardware on the right tire guard (Figure 2).

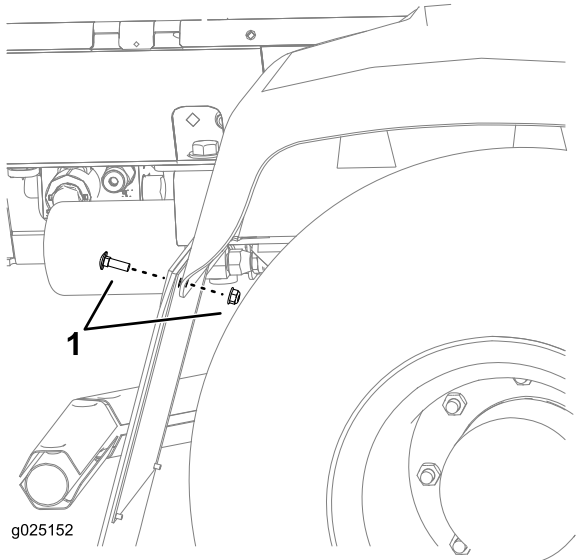


Figure 2

1. Existing hardware
2. Attach the bracket to the machine using the 4 bolts (5/16 inch) and 4 nuts (5/16 inch) as shown in Figure 3.

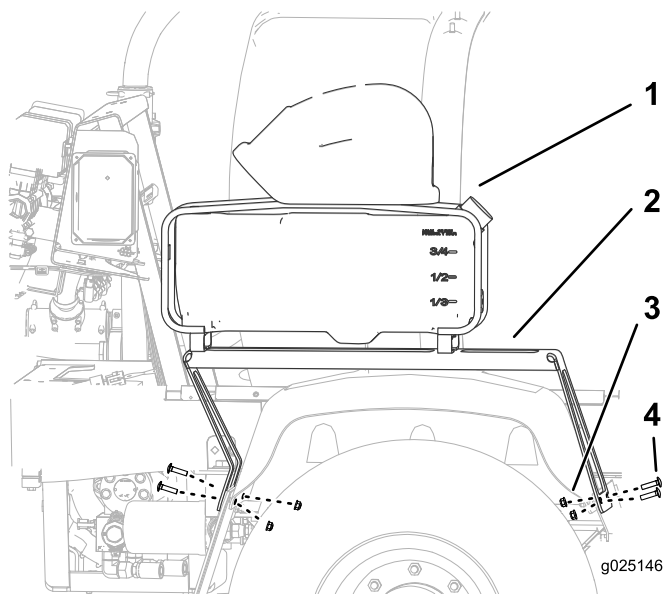


Figure 3

- | | |
|---------------------|----------------------|
| 1. Foam-marker tank | 3. Nuts (5/16 inch) |
| 2. Bracket | 4. Bolts (5/16 inch) |

3

Installing the Switches

Parts needed for this procedure:

2	Switches
---	----------

Installing the Switches

1. Remove the 2 plugs from the control panel and insert the switches into the spaces as shown in Figure 4.

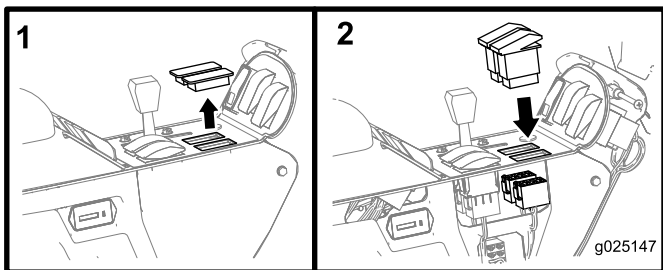


Figure 4

2. Connect the switches to the connectors.

Operation

Using the Controls

Right foam on/off switch—This switch activates the compressor, generating a flow of foam to the right boom.

Left foam on/off switch—This switch activates the compressor, generating a flow of foam to the left boom.

Indicator markings—These markings located on the side of the tank; they indicate the solution level in the tank.

Foam regulator adjustment valve—This valve controls the consistency of the foam solution. Adjusting the valve controls the amount of soap solution delivered to the foam nozzles. Increasing the flow results in larger, more frequent foam drops; decreasing the flow results in smaller, less frequent foam drops (Figure 5).

Note: A watery marker consistency may be helpful on windy days.

Pressure relief valve—Pull the red tab on the tank cap outward to relieve pressure in the tank (Figure 5).

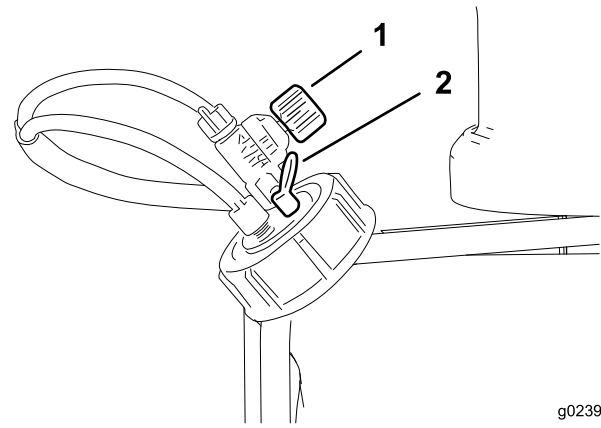
Filling the Tank and Adjusting the Foam Density

Important: Flush the system with clean water after each use, especially after using hard water. Do not apply lubricating oils, grease, or other petroleum products to the compressor motor assembly.

1. Ensure that both the left and right boom switches located on the console are in the Off position.
2. Pull out on the red pressure relief tab, and remove the black cap from the tank.
3. Pour the proper amount of water into the tank, and then add foam concentrate through the opening in the top of the tank according to the manufacturer's instructions.

Important: Extreme pH levels (hardness or softness) of the water will affect the amount of foam concentrate needed.

4. Install the cap on the tank and tighten it by hand.
5. For the initial operation, open the foam density adjustment valve 1/8 to 1/4 turn (Figure 5).



g023901

Figure 5

1. Foam regulator adjustment valve
2. Pressure relief valve

6. Start operating the marking system and make a test pattern on the ground.

Note: When you first start the marking system, allow 1 to 2 minutes for the foam to flow through the line.

7. Adjust the foam density adjustment valve to obtain the desired consistency and spray as normal.

Note: If you leave the foam in the line for more than 2 hours, it may become watery. Before operating after a break of 2 or more hours, run the machine for 1 to 2 minutes to remove the excess water.

If the foam in the machine is very watery, do the following:

- A. Close the foam density adjustment valve completely.
- B. Operate for 2 minutes.
- C. Wait 1 minute and then check the consistency of the foam.
- D. Adjust the foam to achieve the desired consistency.