



Smoothing Roller Part Kit

GreensPro™ 1200 Greens Roller

Model No. 127-8002

Form No. 3383-774 Rev A

Installation Instructions

⚠ WARNING

CALIFORNIA Proposition 65 Warning

This product contains a chemical or chemicals known to the State of California to cause cancer, birth defects, or reproductive harm.

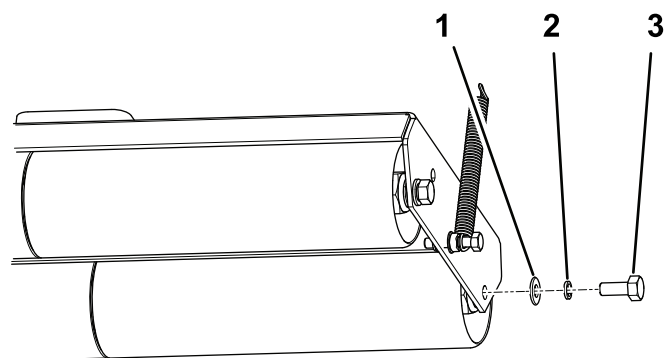
Loose Parts

Use the chart below to verify that all parts have been shipped.

Description	Qty.	Use
No parts required	—	Remove the existing rollers.
Press tool	1	Disassemble the rollers.
Spacer disc	4	Assemble the rollers.
Flocked bearing shield	16	
Bearing	4	
Long spacer tube	6	
Short spacer tube	2	
Bearing housing assembly	4	
O-ring	8	
Nut	8	
Hex-head bolt	8	Install the roller assemblies.
Split washer	8	
Washer	8	

Removing the Existing Rollers

1. Raise the machine up off the ground to access the roller assemblies.
2. Remove the hex-head bolts, the washers, and the split washers securing the sides of the roller assemblies to the steering heads (Figure 1).



G025382

Figure 1

- | | |
|-----------------|------------------|
| 1. Washer | 3. Hex-head bolt |
| 2. Split washer | |



- Remove the roller assemblies from the machine, and discard the bolts, washers, and split washers.

Disassembling the Rollers

- Remove the nuts from the ends of each roller assembly (Figure 2).

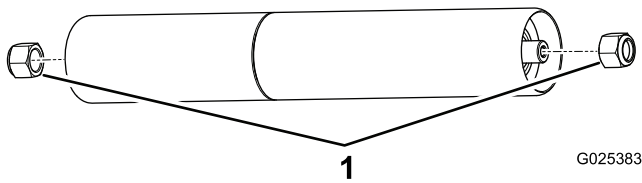


Figure 2

- Nuts (existing)

- Increase the gap (Figure 3) between the 2 roller tubes on each roller assembly.

Important: Be careful not to damage the roller tubes.

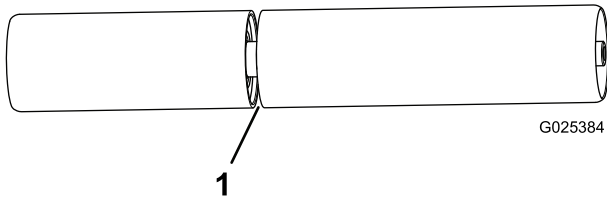


Figure 3

- Gap

- Use a press to remove all of the components out of the inside of each roller tube, except the inner bearing housing (Figure 4).

Note: When removing the outer bearing housing in each roller tube, use the included press tool to obtain a more secure grip on the rounded outer edge of each roller tube (Figure 5).

Important: Retain the inner bearing housing in each roller tube, and try to keep it seated correctly in position.

Remove the components of each roller as follows:

- Support 1 roller half with plates, and press the axle out of the roller.

Note: Take care not to press the inside housing out of the tube

- Repeat step A for the second roller half.
- Place the outer end of the roller into the press tool (radius end), move the center spacer to the side, and use a long rod to press the outer bearing housing and bearing out of the roller.
- Turn the roller over and press out the inside bearing.

Note: Take care not to press out the housing.

- Repeat steps C and D for the second roller half.

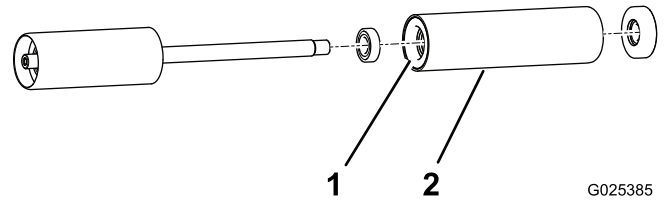


Figure 4

- Inner bearing housing
- Roller tube

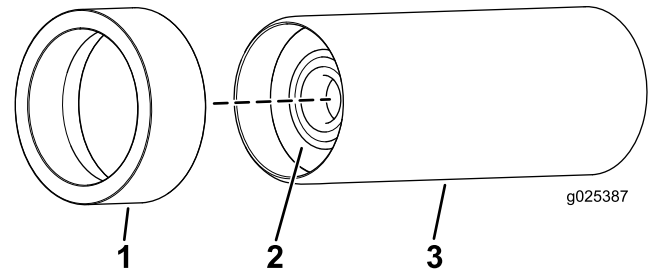


Figure 5

- Press tool
- Outer bearing housing
- Roller tube

- Wipe out the inside of each roller tube and each inner bearing housing to ensure that they are ready for installing the new parts.

Note: Discard all the components except the roller tubes and inner bearing housings.

Assembling the Rollers

- Install a spacer disc onto the slightly larger area of the axle, where the 2 roller tubes meet (Figure 6).

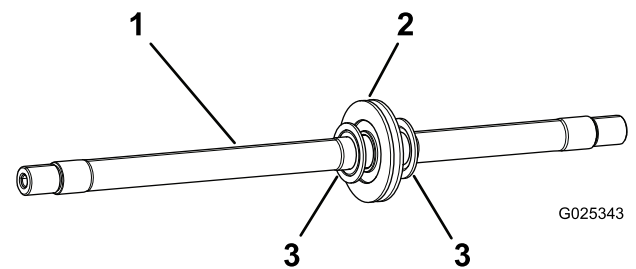


Figure 6

- Axle
- Spacer disc
- Flocked bearing shield

- Install a flocked bearing shield on each side of the spacer disc (Figure 6).

Important: Position each flocked bearing shield so that the flocked side faces the bearing.

- Ensure that the existing bearing housing is pressed against the shoulder inside the roller tube.

Note: Use the existing roller tubes and the existing inner bearing housings.

Important: If necessary, press the existing bearing housing into the roller tube to seat it into position.

4. Install a bearing into the existing bearing housing in the roller tube (Figure 7).

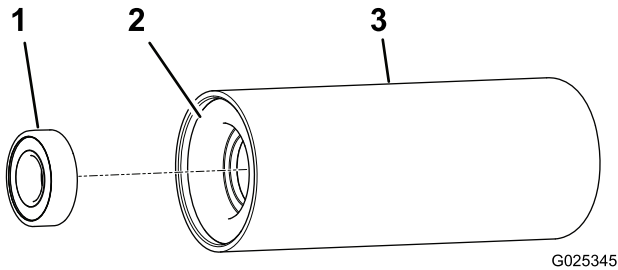


Figure 7

1. Bearing
2. Bearing housing (existing)
3. Roller tube (existing)

5. Install the roller tube onto the axle, with the bearing toward the inside of the axle (Figure 8).

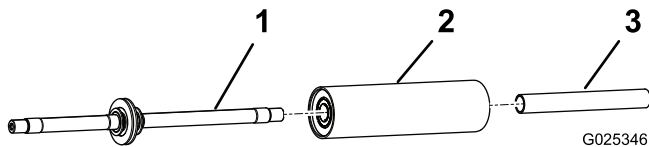


Figure 8

1. Axle
2. Roller tube
3. Spacer tube

Important: The short axles are asymmetrical. For each short axle, ensure that the short roller tube is on the short side of the axle and the long roller tube is on the long end of the axle (Figure 9).

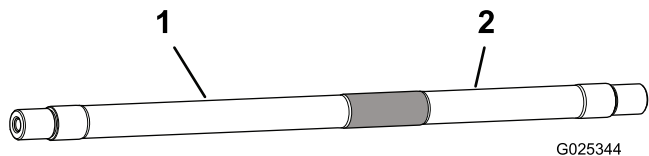


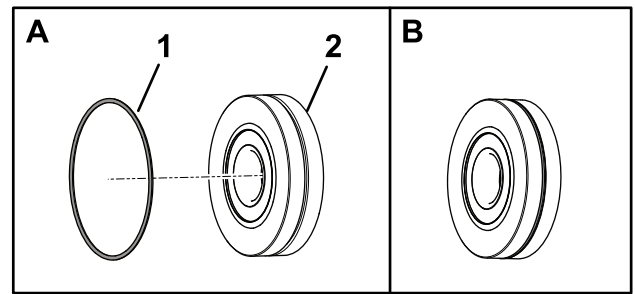
Figure 9

1. Long side
2. Short side

6. Install an appropriate spacer tube onto the axle, inside the roller tube.

Note: For the long end of an axle, install a long spacer tube; for the short end of an axle, install a short spacer tube.

7. Install an O-ring in the groove on a bearing housing assembly (Figure 10).

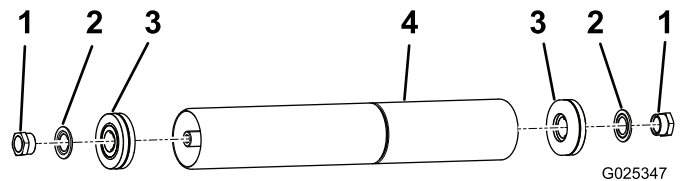


G025348

Figure 10

1. O-ring
2. Bearing housing assembly

8. Install the bearing housing assembly (with an O-ring and a bearing) into the outer end of the roller tube (Figure 11).



G025347

Figure 11

1. Nut
2. Flocked bearing shield
3. Bearing housing assembly
4. Roller tube

9. Install a flocked bearing shield onto the end of the axle.

Important: Position each flocked bearing shield so that the flocked side faces the bearing.

10. Ensure that there are equal lengths of the axle protruding out past the bearings.
11. While holding the flocked bearing shields centered in place, install and tighten each nut by hand.

Important: If the flocked bearing shield is not centered on the axle, it can become damaged and cause damage to the bearing.

12. Tighten the nuts to 108 N-m (80 ft-lb).
13. Repeat steps 1 through 12 for each roller.

Installing the Roller Assemblies

1. Install the roller assemblies into the steering heads of the machine, and secure each end with a new hex-head bolt, a new split washer, and a new washer (Figure 1).

Important: Align the short roller assemblies so that the short tubes are on the outside and the long tubes are on the inside (Figure 12). This staggers the joints between the roller tubes to improve the contact with the turf.

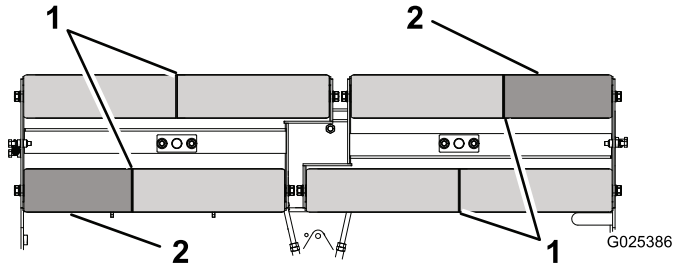


Figure 12

1. Joints
2. Short roller tube

-
2. Ensure that each roller spins freely without rubbing on surrounding components.