



Count on it.

Form No. 380-0030 Rev A

Parts Catalog

1" Golf Sprinkler Body

Model No. 1" Golf Body

Ordering Replacement Parts

To order replacement parts, please supply the part number, the quantity, and the description of each part desired.

Understanding Reference Numbers

Each identified part in an illustration has a reference number. The reference number for a part also appears in the parts list, along with other information about the part.

This catalog uses two special reference number formats, one to indicate parts in a service assembly and another to indicate the quantity of a given part in an illustration.

Service Assembly Reference Numbers

Parts in service assemblies have reference numbers in the form a:b. The a represents the reference number of the entire service assembly and the b represents a sequential number unique to each part within the service assembly.

For example, a wheel assembly might be identified by reference number 6, the tire by 6:1, the valve by 6:2, and the wheel by 6:3. When you order the assembly identified by reference number 6, you receive all parts identified by reference numbers 6:1, 6:2, and 6:3. However, you may also order any part individually. Reference numbers of this type appear in illustration and in parts lists.

Reference Numbers Indicating Quantity

In an illustration, if a reference number indicates more than one part, the reference number has the form nX y. The n represents the quantity of the part, the X is the multiplication symbol, and the y represents the reference number.

For example, in an illustration, the reference number 2X 37 means that two of the parts identified by reference number 37 are indicated.

List of Abbreviations

AR: as required

ASM: assembly

BBC: blade brake control

BHTF: button head thread forming

CARR: carriage

CCW: counter clockwise

CW: clockwise

DEG: degrees

DPA: Dual Point Adjustment

ECM: electronic control module

EXT: external

FH: flat head

GA: gauge

HD: heavy-duty

HF: hex flange

HH: hex head

HHF: hex head flange

HHFTF: hex head flange thread forming

HJ: hex jam

HLH: hex lag head

HOC: height-of-cut

HSBH: hex socket button head

HSFH: hex socket flat head

HSH: hex socket head

HWH: hex washer head

HWHTF: hex washer head thread forming

HYD: hydraulic

LH: left hand

LP: Liquid Propane

NI: nylon insert

NPTF: national pipe thread fine

PFH: phillips flat head

PPH: phillips pan head

PPHTF: phillips pan head thread forming

PRH: phillips round head

PTH: phillips truss head

PTO: power-take-off

RH: right hand

ROPS: roll-over protection system

RRB: rear roller brush

SFH: slotted fillister head

SHH: slotted hex head

SHWH: slotted hex washer head

SPH: slotted pan head

SQH: square head

SRH: slotted round head

STD: standard

TAP: self tapping

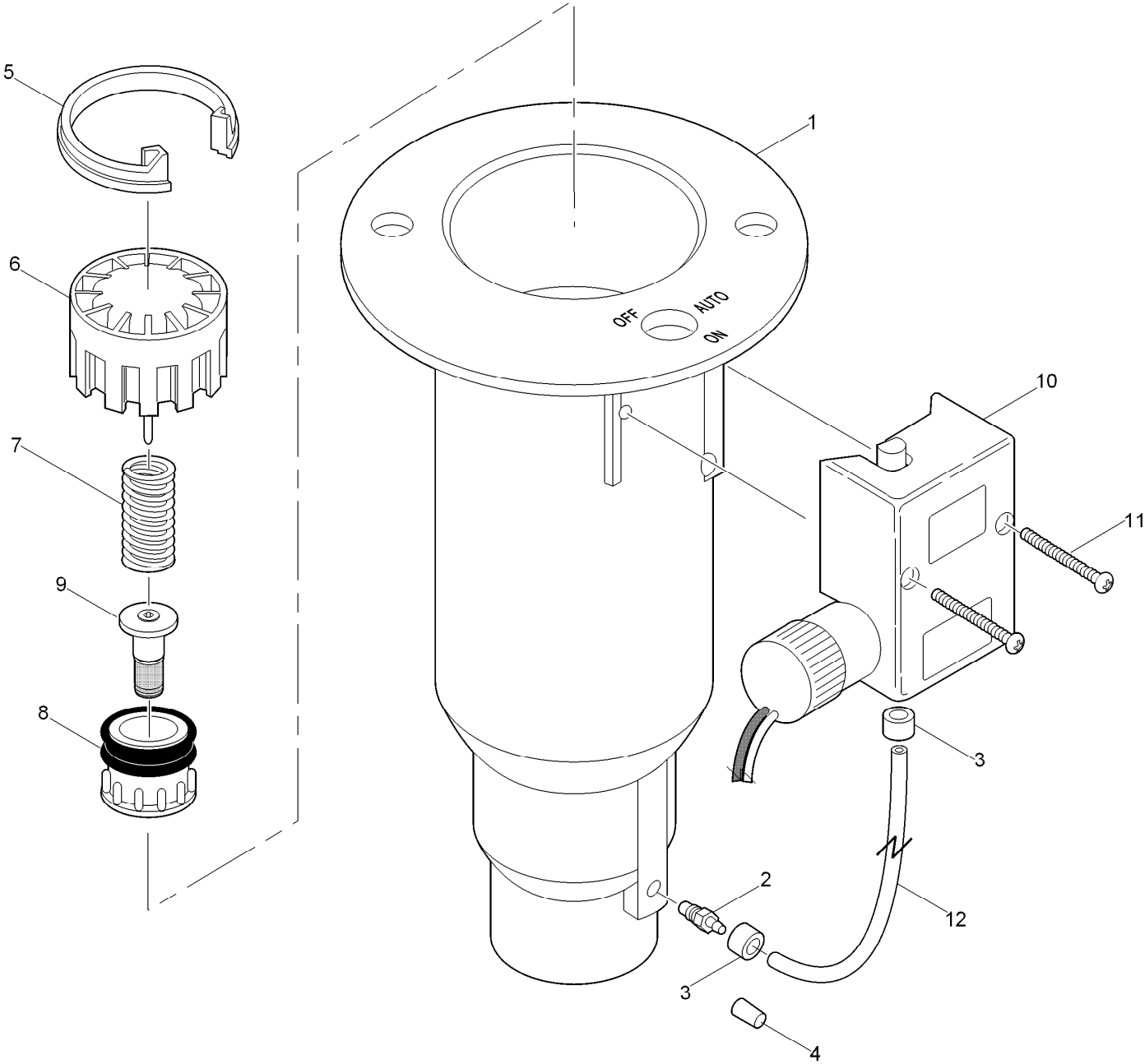
TTH: torx truss head

Contents

Golf Sprinkler Body - 1 Inch 4

Golf Sprinkler Body - 1 Inch - 800S and DT Series 6

Golf Sprinkler Body - 1 Inch



Golf Sprinkler Body - 1 Inch (continued)

Ref.	Part Number	Qty.	Description	Ref.	Part Number	Qty.	Description
1	35-9421		Electric W/O Vih, Npt (Includes Items 1-4) ▲	4	89-8157		Cap, 1/4", Poly, No
1	89-4128		Electric W/O Vih, Ribless, Npt (Includes Items 1-4) ▲❖	5	89-4702		Snap Ring, Valve
1	102-0083		Electric W/Vih, 720, Npt (Includes Items 1-9) ▲	6	9-1485		Cylinder Assy., No & Com
1	35-9418		Hydraulic No W/O Vih, Npt (Includes Items 1-4) ▲	6	9-1487		Cylinder Assy., El & Nc
1	89-4126		Hydraulic No W/O Vih, Ribless, Npt (Includes Items 1-4) ▲❖	7	3-2633		Spring, Valve, No, El & Nc
1	35-9453		Com W/O Vih, Npt (Includes Items 1-3 & 12) ▲	7	89-5821		Spring, Valve, Com
1	89-4127		Com W/O Vih, Ribless, Npt (Includes Items 1-3 & 12) ▲❖	8	89-1044		Piston Assy., No & Com
1	35-9386		Electric W/O Vih, Bsp (Includes Items 1-4) ◆	8	89-1054		Piston Assy., El & Nc (Includes Item 9)
1	102-0084		Electric W/Vih, 720, Bsp (Includes Items 1-9) ◆	8	102-0081		Piston Assy., El (720 Only) (Includes Item 9)
1	35-9385		Hydraulic No W/O Vih, Bsp (Includes Items 1-4) ◆	9	35-9646		Filter Assy., Metering, El, Nc
1	89-8635		1" Acme Body Style, Electric W/O Vih (Includes Items 1-4) □	10			Pilot Valve Assy. (See Pilot Valve Assembly Section) ▶○
1	102-0085		1" Acme Body Style, Electric W/Vih, 720 (Includes Items 1-9) □	11	3-2696		Screw-Tap, #8
2	9-6002		Adapter-Tubing, Threaded, 1/4"	12	9-2622		Tubing, Poly, 1/4" X 6 1/4", El & Nc
3	900-40		Retainer-Tube, No +	12	9-1876		Tube, 1/4" X 12", Com
					89-1046		Valve Assy., 1.0" Hyd., No (Includes Items 6-8) ●■
					89-1047		Valve Assy., Com (Includes Items 6-8) ●■
					89-1048		Valve Assy., El, Nc (Includes Items 6-9) ●■
					102-0082		Valve Assy., El, Low Flow (Includes Items 6-9) ●■
					9-7271		Adapter-Tubing, Oversized Thread (Replaces Item 2) ● ■

● SERVICE ITEMS

▲ 1 Inch NPT Body Style

□ 1 Inch ACME Body Style

▶ See Pilot Valve Assembly Section.

+ Order Through Finished Goods Distribution System - Minneapolis

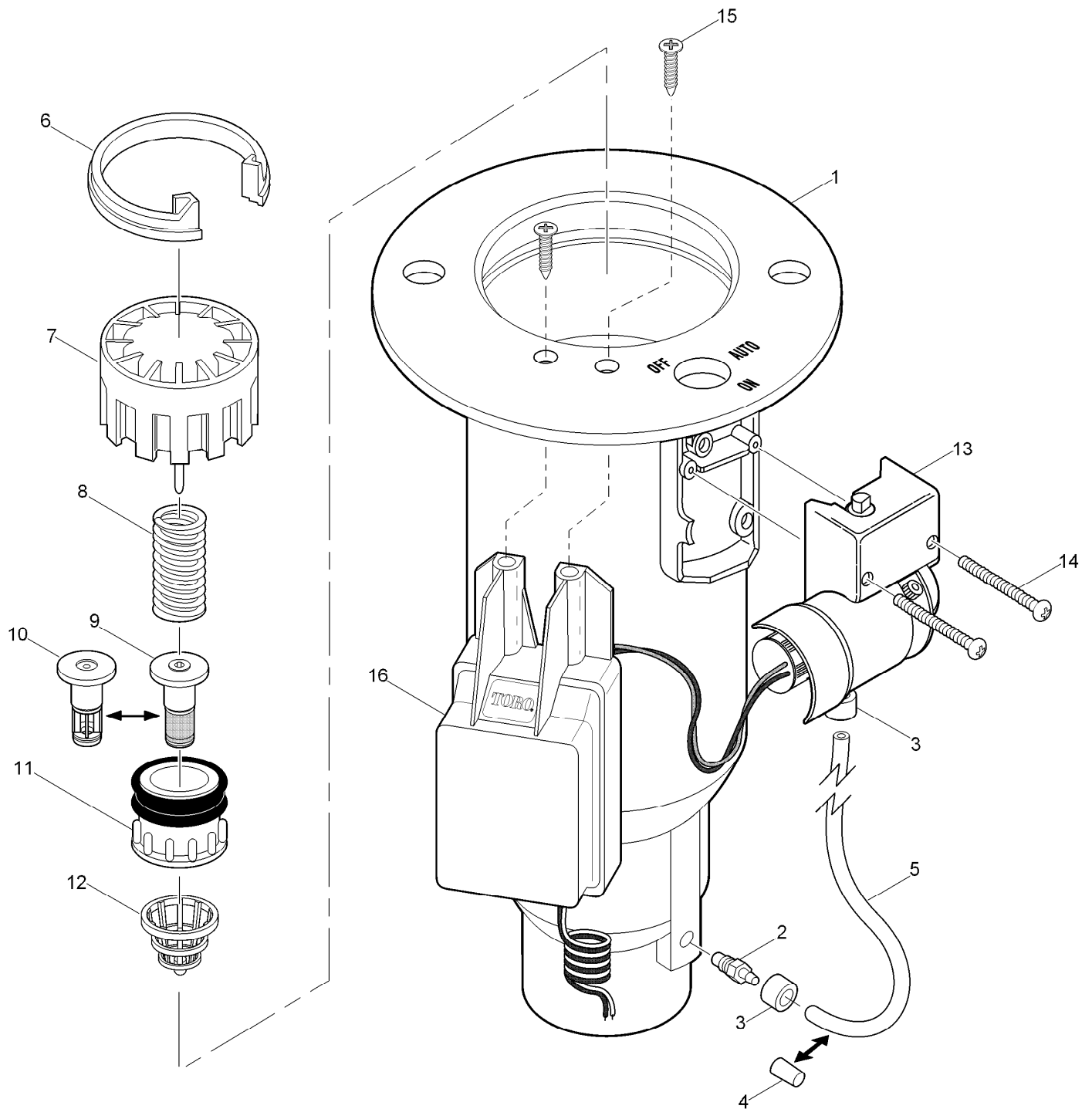
❖ Ribless bodies are used with sprinklers manufactured prior to July 1993.

■ Not illustrated

◆ 1 Inch BSP Body Style

○ Not serviced separately

Golf Sprinkler Body - 1 Inch - 800S and DT Series



Golf Sprinkler Body - 1 Inch - 800S and DT Series (continued)

Ref.	Part Number	Qty.	Description	Ref.	Part Number	Qty.	Description
1	102-1090	1	Electric W/O Vih, Npt (Includes Items 1-2)▲	3	900-40	2	Retainer-Tube, No +
1	102-1084	1	Hydraulic No W/O Vih, Npt (Includes Items 1-2)▲	4	89-8157	1	Cap, 1/4", Poly, No
1	102-1078	1	Com W/O Vih, Npt (Includes Items 1-3 & 5)▲	5	9-2623	1	Tube, 1/4" X 8", El
1	118-1137	1	Body Assy., 1" Npt (For Decoder Equipped Models) ▲	5	9-1876	1	Tube, 1/4" X 12", Com
1	102-1092	1	Electric W/O Vih, Bsp (Includes Items 1-2)◆	6	89-4702	1	Snap Ring, Valve
1	102-1086	1	Hydraulic No W/O Vih, Bsp (Includes Items 1-2)◆	7	102-0623	1	Cylinder Assy., El & No/Com
1	102-1080	1	Com W/O Vih, Bsp (Includes Items 1-3 & 5)◆	8	3-2633	1	Spring, Valve, No, El & Nc
1	118-1138	1	Body Assy., 1" Bsp (For Decoder Equipped Models) ◆	8	89-5821	1	Spring, Valve, Com
1	102-1094	1	1" Acme Body Style, Electric W/O Vih (Includes Items 1-2)□	9	35-9646	1	Filter Assy., Metering, El, Nc
1	102-1088	1	1" Acme Body Style, Hydraulic No W/O Vih (Includes Items 1-2)□	10	102-6529	1	Filter Assy., Non-Metering, No/Com
1	102-1082	1	1" Acme Body Style, Com W/O Vih (Includes Items 1-3 & 5)□	11	102-6314	1	Piston Assy., No & Com (Includes Item 10)
1	118-1139	1	Body Assy., 1" Acme (For Decoder Equipped Models) □	11	89-1054	1	Piston Assy., El & Nc (Includes Item 9)
2	9-6002	1	Adapter-Tubing, Threaded, 1/4"	12	102-0784	1	Rock Screen, 1"
				13		1	Pilot Valve Assy. (See Pilot Valve Assembly Section)▶○
				14	3-2696	2	Screw-Tap, #8
				15	363-6396	2	Screw (For Decoder Equipped Models)
				16	DEC-ISP-1GB	1	Decoder Assy., 1-Station, Golf Body (Does Not Include The Solenoid.) (For Decoder Equipped Models)
					102-6313		Valve Assy., No (Includes Items 7, 8, 10 & 11)●■
					102-6312		Valve Assy., Com (Includes Items 7, 8, 10 & 11)●■
					102-0624		Valve Assy., El, Nc (Includes Items 7-9 & 11)●■

● SERVICE ITEMS

▲ 1 Inch NPT Body Style

□ 1 Inch ACME Body Style

▶ See Pilot Valve Assembly Section.

+ Order Through Finished Goods Distribution System - Minneapolis

■ Not illustrated

◆ 1 Inch BSP Body Style

○ Not serviced separately



Count on it.