



**Count on it.**

**Parts Catalog**

**1" Golf Sprinkler Body**

Model No. 1" Golf Body



# Ordering Replacement Parts

To order replacement parts, please supply the part number, the quantity, and the description of each part desired.

## Understanding Reference Numbers

Each identified part in an illustration has a reference number. The reference number for a part also appears in the parts list, along with other information about the part.

This catalog uses two special reference number formats, one to indicate parts in a service assembly and another to indicate the quantity of a given part in an illustration.

## Service Assembly Reference Numbers

Parts in service assemblies have reference numbers in the form a:b. The a represents the reference number of the entire service assembly and the b represents a sequential number unique to each part within the service assembly.

For example, a wheel assembly might be identified by reference number 6, the tire by 6:1, the valve by 6:2, and the wheel by 6:3. When you order the assembly identified by reference number 6, you receive all parts identified by reference numbers 6:1, 6:2, and 6:3. However, you may also order any part individually. Reference numbers of this type appear in illustration and in parts lists.

## Reference Numbers Indicating Quantity

In an illustration, if a reference number indicates more than one part, the reference number has the form nX y. The n represents the quantity of the part, the X is the multiplication symbol, and the y represents the reference number.

For example, in an illustration, the reference number 2X 37 means that two of the parts identified by reference number 37 are indicated.

# List of Abbreviations

**AR:** as required

**ASM:** assembly

**BBC:** blade brake control

**BHTF:** button head thread forming

**CARR:** carriage

**CCW:** counter clockwise

**CW:** clockwise

**DEG:** degrees

**DPA:** Dual Point Adjustment

**ECM:** electronic control module

**EXT:** external

**FH:** flat head

**GA:** gauge

**HD:** heavy-duty

**HF:** hex flange

**HH:** hex head

**HHF:** hex head flange

**HHFTF:** hex head flange thread forming

**HJ:** hex jam

**HLH:** hex lag head

**HOC:** height-of-cut

**HP:** high pressure

**HSBH:** hex socket button head

**HSFH:** hex socket flat head

**HSH:** hex socket head

**HWH:** hex washer head

**HWHTF:** hex washer head thread forming

**HYD:** hydraulic

**LH:** left hand

**LP:** low pressure

**LPG:** Liquefied Petroleum Gas

**NI:** nylon insert

**NPTF:** national pipe thread fine

**PFH:** phillips flat head

**PPH:** phillips pan head

**PPHTF:** phillips pan head thread forming

**PRH:** phillips round head

**PTH:** phillips truss head

**PTO:** power-take-off

**RH:** right hand

**ROPS:** roll-over protection system

**RRB:** rear roller brush

**SFH:** slotted fillister head

**SHH:** slotted hex head

**SHWH:** slotted hex washer head

**SPH:** slotted pan head

**SQH:** square head

**SRH:** slotted round head

**STD:** standard

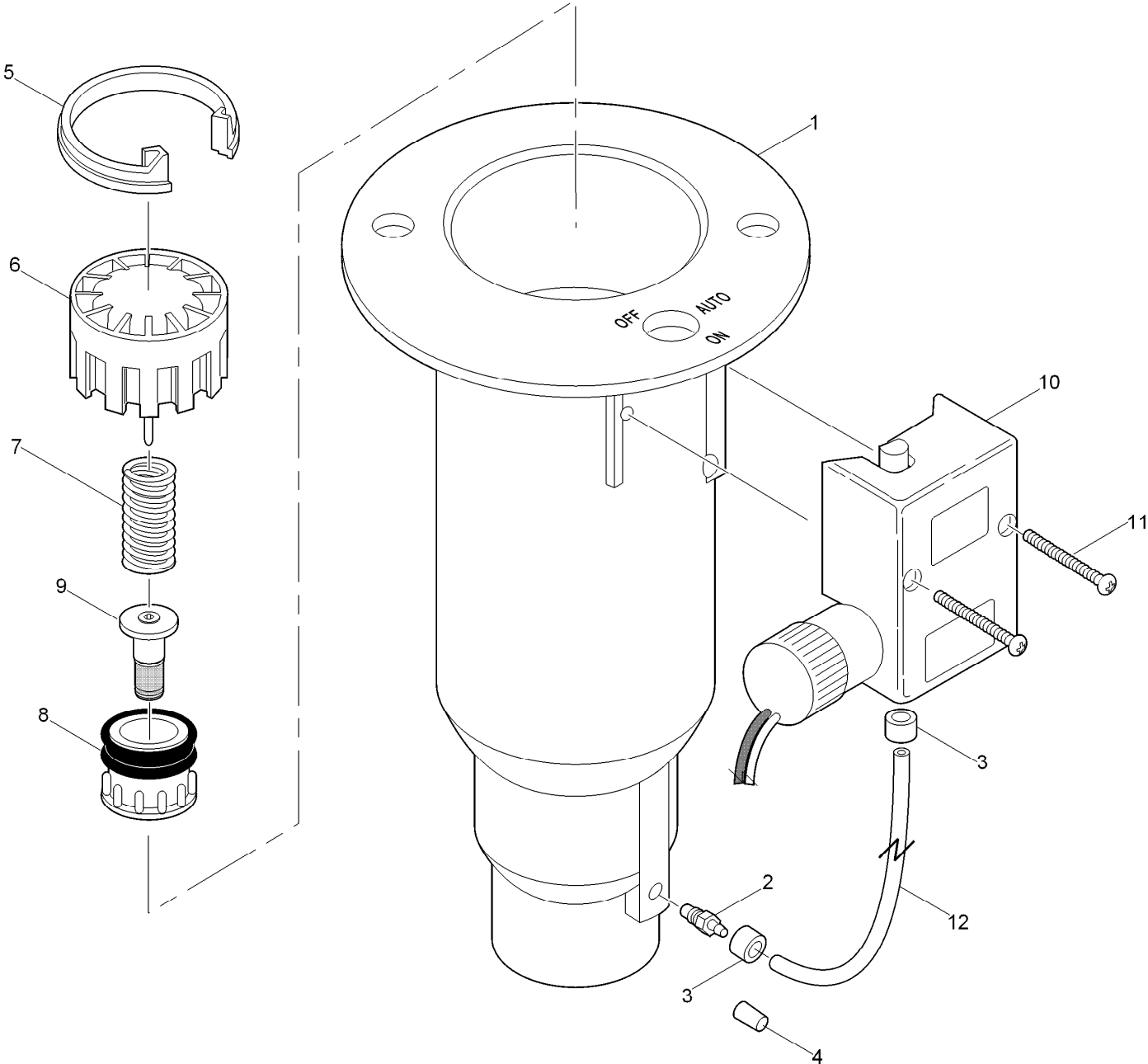
**TAP:** self tapping

**TTH:** torx truss head

# Contents

Golf Sprinkler Body - 1 Inch ..... 4  
Golf Sprinkler Body - 1 Inch - 800S and DT Series ..... 6

# Golf Sprinkler Body - 1 Inch



# Golf Sprinkler Body - 1 Inch (continued)

Ref.	Part Number	Qty.	Description	Ref.	Part Number	Qty.	Description
1	35-9421		Electric W/O Vih, Npt (Includes Items 1-4) ▲	4	89-8157		Cap, 1/4", Poly, No
1	89-4128		Electric W/O Vih, Ribless, Npt (Includes Items 1-4) ▲ ❖	5	89-4702		Snap Ring, Valve
1	102-0083		Electric W/Vih, 720, Npt (Includes Items 1-9) ▲	6	9-1485		Cylinder Assy., No & Com
1	35-9418		Hydraulic No W/O Vih, Npt (Includes Items 1-4) ▲	6	9-1487		Cylinder Assy., El & Nc
1	89-4126		Hydraulic No W/O Vih, Ribless, Npt (Includes Items 1-4) ▲ ❖	7	3-2633		Spring, Valve, No, El & Nc
1	35-9453		Com W/O Vih, Npt (Includes Items 1-3 & 12) ▲	7	89-5821		Spring, Valve, Com
1	89-4127		Com W/O Vih, Ribless, Npt (Includes Items 1-3 & 12) ▲ ❖	8	89-1044		Piston Assy., No & Com
1	35-9386		Electric W/O Vih, Bsp (Includes Items 1-4) ◆	8	89-1054		Piston Assy., El & Nc (Includes Item 9)
1	102-0084		Electric W/Vih, 720, Bsp (Includes Items 1-9) ◆	8	102-0081		Piston Assy., El (720 Only) (Includes Item 9)
1	35-9385		Hydraulic No W/O Vih, Bsp (Includes Items 1-4) ◆	9	35-9646		Filter Assy., Metering, El, Nc
1	89-8635		1" Acme Body Style, Electric W/O Vih (Includes Items 1-4) □	10			Pilot Valve Assy. (See Pilot Valve Assembly Section) ▶ ○
1	102-0085		1" Acme Body Style, Electric W/Vih, 720 (Includes Items 1-9) □	11	3-2696		Screw-Tap, #8
2	9-6002		Adapter-Tubing, Threaded, 1/4"	12	9-2622		Tubing, Poly, 1/4" X 6 1/4", El & Nc
3	900-40		Retainer, Tube, Pr And Cr †	12	9-1876		Tube, 1/4" X 12", Com
					89-1046		Valve Assy., 1.0" Hyd., No (Includes Items 6-8) ● ■
					89-1047		Valve Assy., Com (Includes Items 6-8) ● ■
					89-1048		Valve Assy., El, Nc (Includes Items 6-9) ● ■
					102-0082		Valve Assy., El, Low Flow (Includes Items 6-9) ● ■
					9-7271		Adapter-Tubing, Oversized Thread (Replaces Item 2) ● ■

● SERVICE ITEMS

▲ 1 Inch NPT Body Style

□ 1 Inch ACME Body Style

▶ See Pilot Valve Assembly Section.

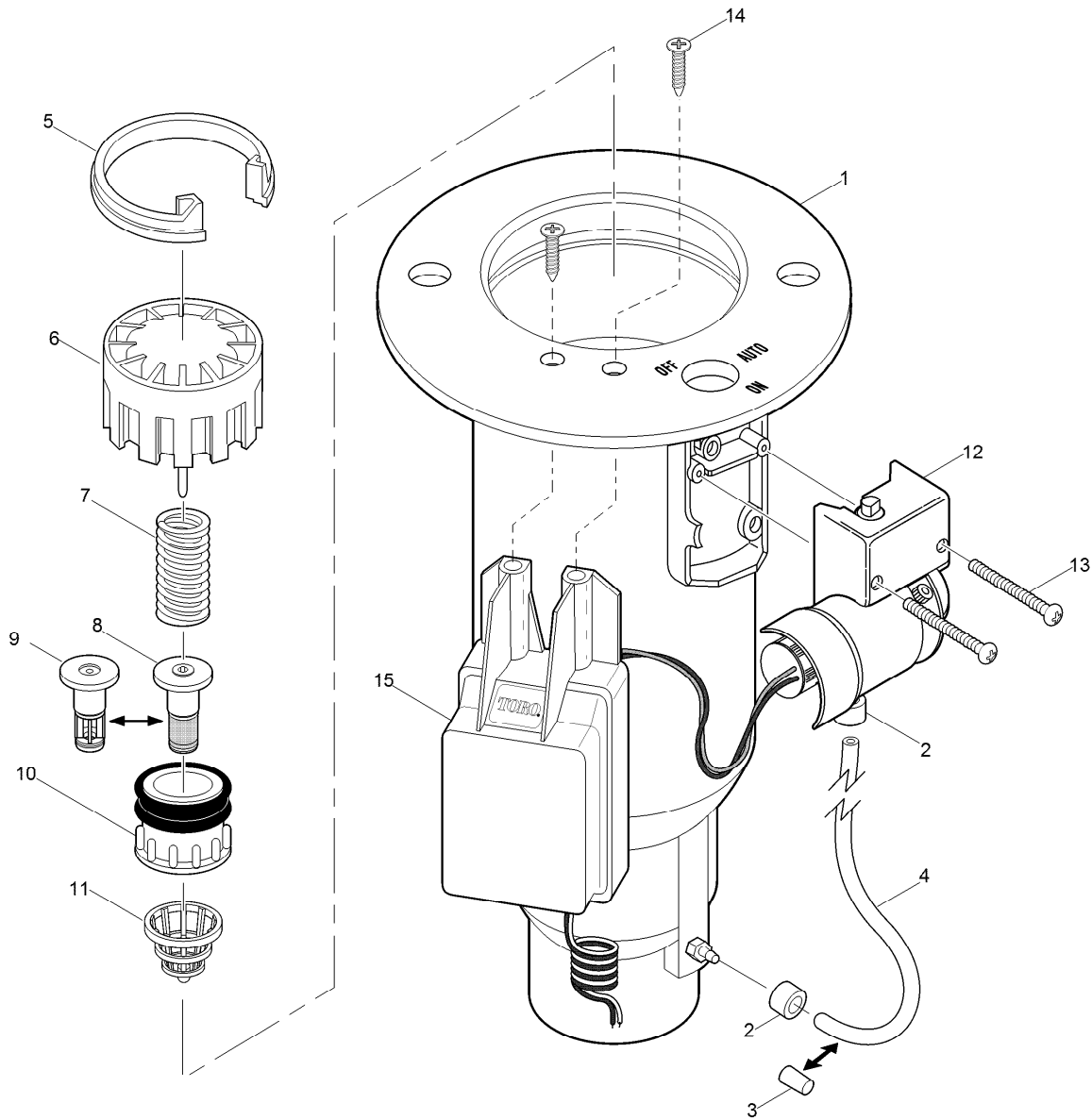
† Order Through Finished Goods Distribution System - Minneapolis

❖ Ribless bodies are used with sprinklers manufactured prior to July 1993.

■ Not illustrated

◆ 1 Inch BSP Body Style

○ Not serviced separately



## Golf Sprinkler Body - 1 Inch - 800S and DT Series

Ref.	Part Number	Qty.	Description
1	102-1090	1	Electric W/O Vih, Npt (Includes Items 1-2) ▲
1	102-1084	1	Hydraulic No W/O Vih, Npt (Includes Items 1-2) ▲
1	102-1078	1	Com W/O Vih, Npt (Includes Items 1-3 & 5) ▲
1	118-1137	1	Body Assy., 1" Npt (For Decoder Equipped Models) ▲
1	102-1092	1	Electric W/O Vih, Bsp (Includes Items 1-2) ◆
1	102-1086	1	Hydraulic No W/O Vih, Bsp (Includes Items 1-2) ◆
1	102-1080	1	Com W/O Vih, Bsp (Includes Items 1-3 & 5) ◆

Ref.	Part Number	Qty.	Description
1	118-1138	1	Body Assy., 1" Bsp (For Decoder Equipped Models) ◆
1	102-1094	1	1" Acme Body Style, Electric W/O Vih (Includes Items 1-2) □
1	102-1088	1	1" Acme Body Style, Hydraulic No W/O Vih (Includes Items 1-2) □
1	102-1082	1	1" Acme Body Style, Com W/O Vih (Includes Items 1-3 & 5) □
1	118-1139	1	Body Assy., 1" Acme (For Decoder Equipped Models) □

### ● SERVICE ITEMS

▲ 1 Inch NPT Body Style

□ 1 Inch ACME Body Style

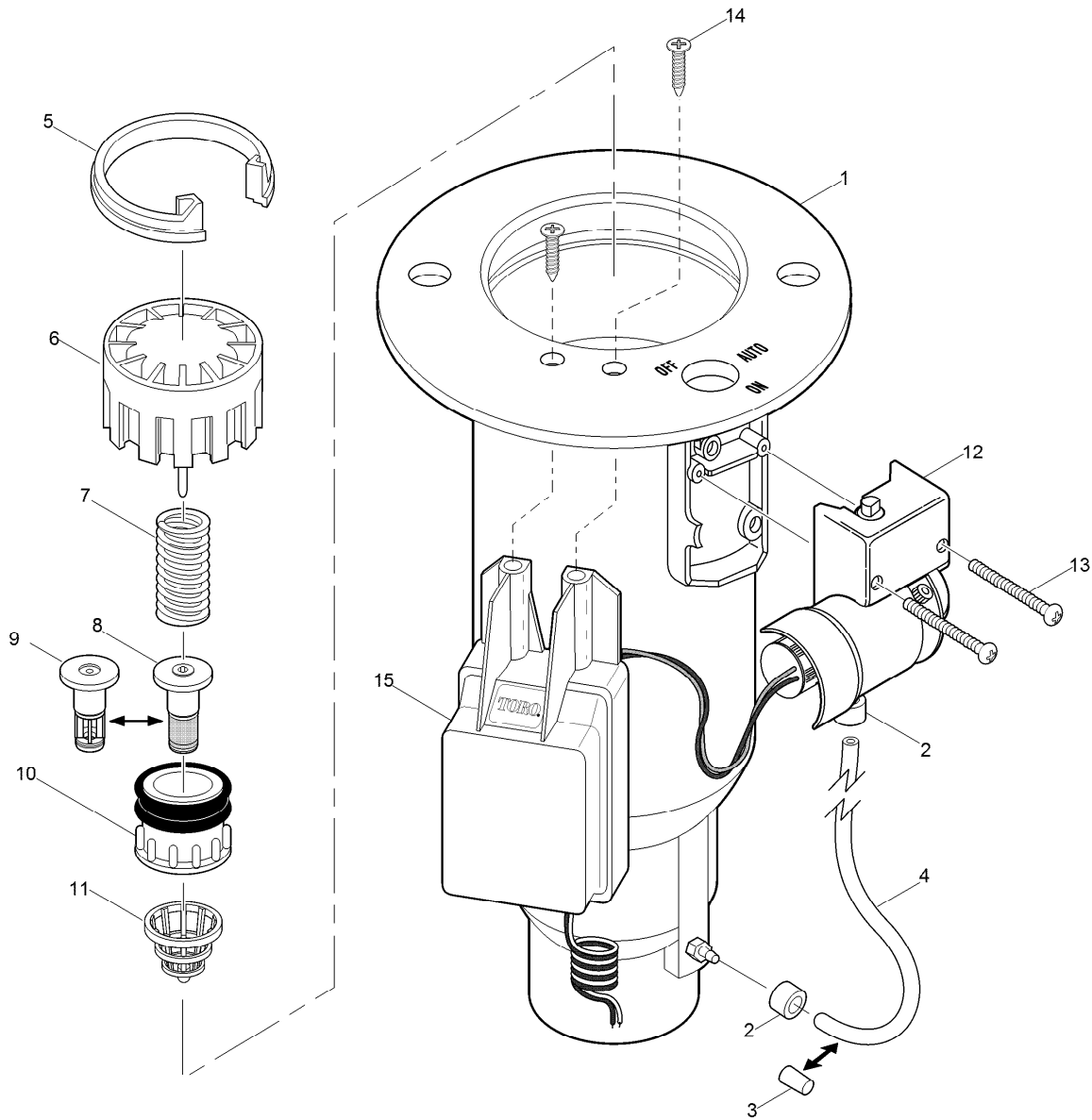
▶ See Pilot Valve Assembly Section.

✦ Order Through Finished Goods Distribution System - Minneapolis

■ Not illustrated

◆ 1 Inch BSP Body Style

○ Not serviced separately



## Golf Sprinkler Body - 1 Inch - 800S and DT Series (continued)

Ref.	Part Number	Qty.	Description	Ref.	Part Number	Qty.	Description
2	900-40	2	Retainer, Tube, Pr And Cr †	11	102-0784	1	Rock Screen, 1
3	89-8157	1	Cap, 1/4	12		1	Pilot Valve Assy. (See Pilot Valve Assembly Section) ○▶
4	9-2623	1	Tube, 1/4	13	3-2696	2	Screw-Tap, #8
4	9-1876	1	Tube, 1/4	14	363-6396	2	Screw (For Decoder Equipped Models)
5	89-4702	1	Snap Ring, Valve	15	DEC-ISP-1GB	1	Gdc Module W/O Solenoid, 1-Station, Golf Body
6	102-0623	1	Cylinder Assy., EI & No/Com	15	118-0841	1	Gdc Module W/ Solenoid, 1-Station, Golf Body
7	3-2633	1	Spring, Valve, No, EI & Nc		102-6313	1	Valve Assy., No ●■
7	89-5821	1	Spring, Valve, Com		102-6312	1	Valve Assy., Com ●■
8	35-9646	1	Filter Assy., Metering, EI, Nc		102-0624	1	Valve Assy., EI, Nc ●■
9	102-6529	1	Filter Assy., Non-Metering, No/Com				
10	102-6314	1	Piston Assy., No & Com				
10	89-1054	1	Piston Assy., EI & Nc,				

● SERVICE ITEMS

▲ 1 Inch NPT Body Style

□ 1 Inch ACME Body Style

▶ See Pilot Valve Assembly Section.

† Order Through Finished Goods Distribution System - Minneapolis

■ Not illustrated

◆ 1 Inch BSP Body Style

○ Not serviced separately



**Count on it.**