



**Count on it.**

Form No. 380-0031 Rev A

# Parts Catalog

## 1.5" Golf Sprinkler Body

Model No. 1.5" Golf Body

# Ordering Replacement Parts

To order replacement parts, please supply the part number, the quantity, and the description of each part desired.

## Understanding Reference Numbers

Each identified part in an illustration has a reference number. The reference number for a part also appears in the parts list, along with other information about the part.

This catalog uses two special reference number formats, one to indicate parts in a service assembly and another to indicate the quantity of a given part in an illustration.

## Service Assembly Reference Numbers

Parts in service assemblies have reference numbers in the form a:b. The a represents the reference number of the entire service assembly and the b represents a sequential number unique to each part within the service assembly.

For example, a wheel assembly might be identified by reference number 6, the tire by 6:1, the valve by 6:2, and the wheel by 6:3. When you order the assembly identified by reference number 6, you receive all parts identified by reference numbers 6:1, 6:2, and 6:3. However, you may also order any part individually. Reference numbers of this type appear in illustration and in parts lists.

## Reference Numbers Indicating Quantity

In an illustration, if a reference number indicates more than one part, the reference number has the form nX y. The n represents the quantity of the part, the X is the multiplication symbol, and the y represents the reference number.

For example, in an illustration, the reference number 2X 37 means that two of the parts identified by reference number 37 are indicated.

# List of Abbreviations

**AR:** as required

**ASM:** assembly

**BBC:** blade brake control

**BHTF:** button head thread forming

**CARR:** carriage

**CCW:** counter clockwise

**CW:** clockwise

**DEG:** degrees

**DPA:** Dual Point Adjustment

**ECM:** electronic control module

**EXT:** external

**FH:** flat head

**GA:** gauge

**HD:** heavy-duty

**HF:** hex flange

**HH:** hex head

**HHF:** hex head flange

**HHFTF:** hex head flange thread forming

**HJ:** hex jam

**HLH:** hex lag head

**HOC:** height-of-cut

**HSBH:** hex socket button head

**HSFH:** hex socket flat head

**HSH:** hex socket head

**HWH:** hex washer head

**HWHTF:** hex washer head thread forming

**HYD:** hydraulic

**LH:** left hand

**LP:** Liquid Propane

**NI:** nylon insert

**NPTF:** national pipe thread fine

**PFH:** phillips flat head

**PPH:** phillips pan head

**PPHTF:** phillips pan head thread forming

**PRH:** phillips round head

**PTH:** phillips truss head

**PTO:** power-take-off

**RH:** right hand

**ROPS:** roll-over protection system

**RRB:** rear roller brush

**SFH:** slotted fillister head

**SHH:** slotted hex head

**SHWH:** slotted hex washer head

**SPH:** slotted pan head

**SQH:** square head

**SRH:** slotted round head

**STD:** standard

**TAP:** self tapping

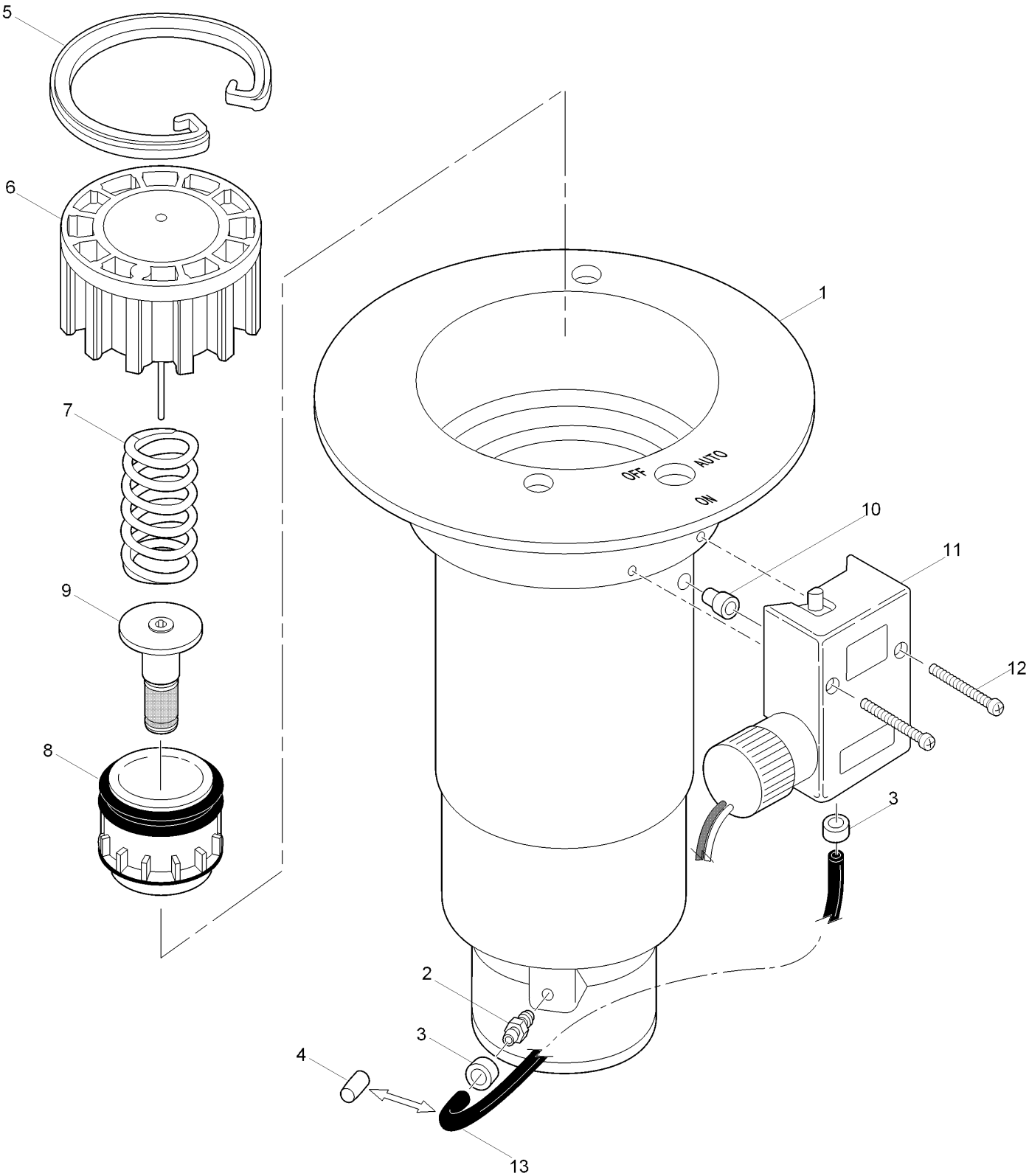
**TTH:** torx truss head

# Contents

Golf Sprinkler Body - 1.5 Inch..... 4

Golf Sprinkler Body - 1.5 Inch - 800S and DT Series ..... 6

# Golf Sprinkler Body - 1.5 Inch



## Golf Sprinkler Body - 1.5 Inch (continued)

<i>Ref.</i>	<i>Part Number</i>	<i>Qty.</i>	<i>Description</i>	<i>Ref.</i>	<i>Part Number</i>	<i>Qty.</i>	<i>Description</i>
1	3-3389	1	Electric W/O Vih, Npt (Includes Items 1-4) ◆	6	102-0626	1	Cylinder Assy., El And No/Com
1	3-3343	1	Hydraulic No W/O Vih, Npt (Includes Items 1-4) ◆	7	102-6411	1	Spring, Valve, El/No, Silver
1	9-1257	1	Com W/O Vih, Npt (Includes Items 1-3 And 13) ◆	7	3-3311	1	Spring-Valve, Com, Black
1	35-5362	1	Electric W/O Vih, Bsp (Includes Items 1-4) □	8	89-1201	1	Piston Assy, Valve, No And Com
1	35-5322	1	Com W/O Vih, Bsp (Includes Items 1-3 And 13) □	8	102-5101	1	Piston Assy., El (Includes Item 9)
1	35-5245		Hydraulic No W/O Vih, Bsp (Includes Items 1-4) □	9	35-9645	1	Filter Assy., Metering, El & Nc
1	89-8646	1	Electric W/O Vih, Acme (Includes Items 1-4) ○	10	35-7663	1	Adapter, Pilot Valve To Body
1	89-8652	1	Com W/O Vih, Acme (Includes Items 1-3 And 13) ○	11		1	Pilot Valve Assy. (See Pilot Valve Assembly Section) ▶ ▲
1	89-8654	1	Hydraulic No W/O Vih, Acme (Includes Items 1-4) ○	12	3-2696	2	Screw-Tap, #8
2	9-6002	1	Adapter-Tubing, Threaded, 1/4"	13	9-2623	1	Tube, 1/4" X 8", El
3	900-40		Retainer-Tube, No +	13	9-1876	1	Tube, 1/4" X 12", Com
4	89-8157	1	Cap, 1/4", Poly, No		89-1036		Valve Assy., No (Includes Items 6-8) ● ■
5	3-3304	1	Snap Ring, Valve		89-1037		Valve Assy., Com (Includes Items 6-8) ● ■
6	9-1479	1	Cylinder ASM, No, Com And Drain Valve		102-4003		Valve Assy., El (Includes Items 6-9) ● ■
					9-7271		Adapter-Tubing, Oversized Thread (Replaces Item 2) ● ■

● SERVICE ITEMS

▲ Not serviced separately

□ 1.5 Inch BSP Body Style

▶ See Pilot Valve Assembly Section.

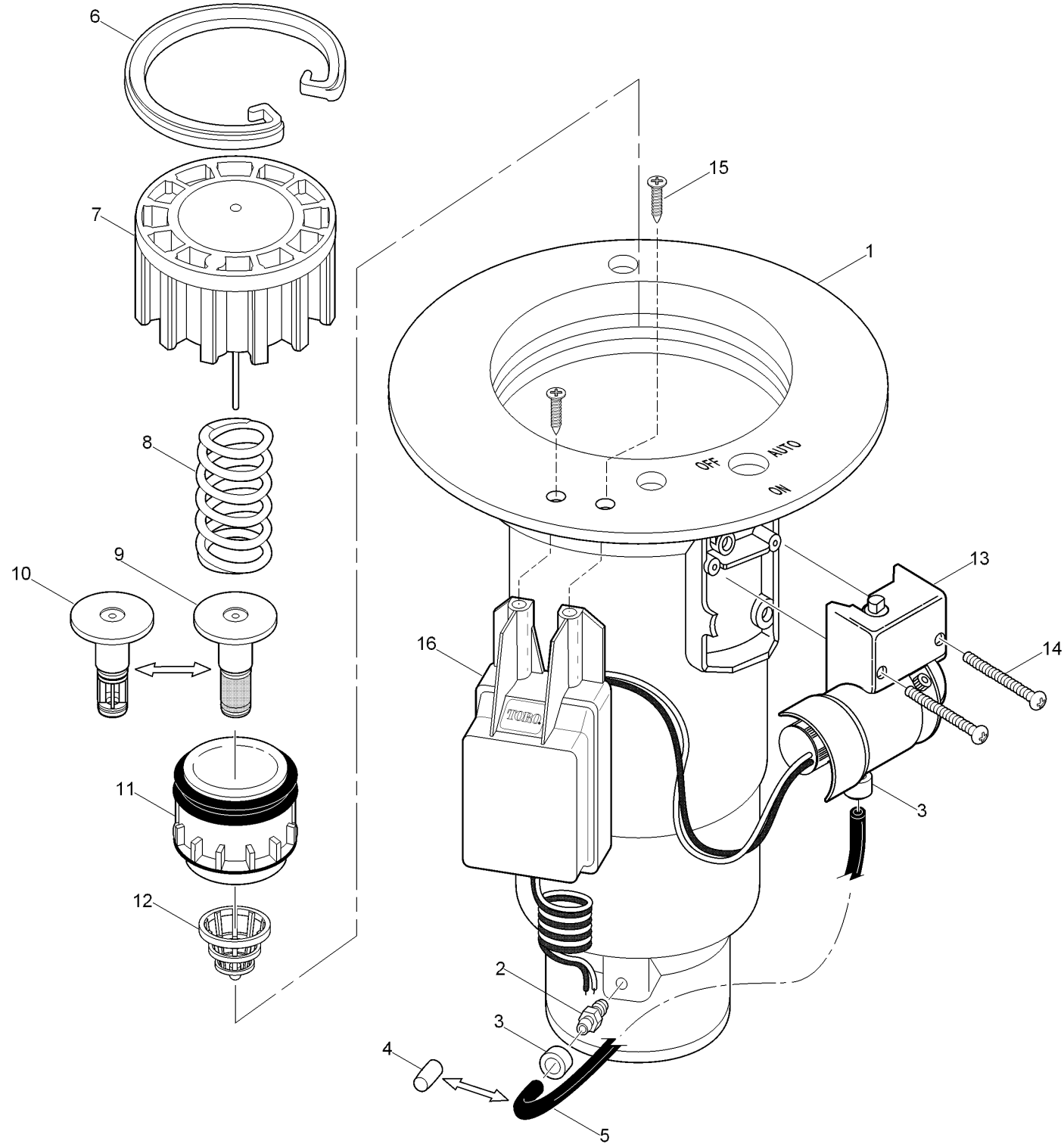
+ Order Through Finished Goods Distribution System - Minneapolis

■ Not illustrated

◆ 1.5 Inch NPT Body Style

○ 1.5 Inch ACME Body Style

# Golf Sprinkler Body - 1.5 Inch - 800S and DT Series



# Golf Sprinkler Body - 1.5 Inch - 800S and DT Series (continued)

Ref.	Part Number	Qty.	Description	Ref.	Part Number	Qty.	Description
1	102-1149	1	Electric W/O Vih, Npt (Includes Items 1 And 2) ♦	5	9-2623	1	Tube, 1/4" X 8", El
1	102-1143	1	Hydraulic No W/O Vih, Npt (Includes Items 1 And 2) ♦	5	9-2624	1	Tubing-Poly, 1/4 X 16.5, Com
1	102-1137	1	Com W/O Vih, Npt (Includes Items 1-3 And 5) ♦	6	3-3304	1	Snap Ring, Valve
1	118-1134	1	Body Assy., 1.5" Npt (For Decoder Equipped Models) ♦	7	102-0626	1	Cylinder Assy., El And No/Com
1	102-1151	1	Electric W/O Vih, Bsp (Includes Items 1 And 2) □	8	102-6411	1	Spring, Valve, El/No, Silver
1	102-1139	1	Com W/O Vih, Bsp (Includes Items 1-3 And 5) □	8	3-3311	1	Spring-Valve, Com, Black
1	102-1145	1	Hydraulic No W/O Vih, Bsp (Includes Items 1 And 2) □	9	35-9645	1	Filter Assy., Metering, El & Nc
1	118-1135	1	Body Assy., 1.5" Bsp (For Decoder Equipped Models) □	10	102-6530	1	Filter Assy., Non-Metering, No/Com
1	102-1153	1	Electric W/O Vih, Acme (Includes Items 1 And 2) ○	11	102-6311	1	Piston Assy., Com & No (Includes Item 10)
1	102-1141	1	Com W/O Vih, Acme (Includes 1-3 And 5) ○	11	102-5101	1	Piston Assy., El (Includes Item 9)
1	102-1147	1	Hydraulic No W/O Vih, Acme (Includes Items 1 And 2) ○	12	102-6065	1	Rock Screen, 1.5"
1	118-1136	1	Body Assy., 1.5" Acme (For Decoder Equipped Models) ○	13		1	Pilot Valve Assy. (See Pilot Valve Assembly Section) ▶▲
2	9-6002	1	Adapter-Tubing, Threaded, 1/4"	14	3-2696	2	Screw-Tap, #8
3	900-40		Retainer-Tube, No +	15	363-6396	2	Screw (For Decoder Equipped Models)
4	89-8157	1	Cap, 1/4", Poly, No	16	DEC-ISP-1GB	1	Decoder Assy., 1-Station, Golf Body (Does Not Include The Solenoid.) (For Decoder Equipped Models)
					102-6310		Valve Assy., No (Includes Items 7, 8, 10 & 11) ●■
					102-6309		Valve Assy., Com (Includes Items 7, 8, 10 & 11) ●■
					102-4003		Valve Assy., El (Includes Items 7-9 & 11) ●■

## ● SERVICE ITEMS

▲ Not serviced separately

□ 1.5 Inch BSP Body Style

▶ See Pilot Valve Assembly Section.

+ Order Through Finished Goods Distribution System - Minneapolis

■ Not illustrated

♦ 1.5 Inch NPT Body Style

○ 1.5 Inch ACME Body Style



**Count on it.**