

CONFIDENTIAL PROPERTY OF



BLOOMINGTON, MINNESOTA

## SPECIFICATIONS

PART NUMBER:	380-0031	REV.:	B
ECM NUMBER:	5093891	SHEET:	1 of 2
ENGINEER:	Jim Wright	DATE:	07-23-2014

PRODUCT:	Breakout, Parts, 1.5" Golf Body			SAP DESCRIPTION:	Breakout, Parts, 1.5" Golf Body		
WEIGHT:	0.02 lbs	FINISH:	N/A	ORIGINATING LOCATION:	RIVERSIDE	SIMILAR TO:	N/A
TOLERANCE: All dims in inches	±.010	SCALE:	N/A	CONTROLLED SOURCE:	XXX (If YES, see information at bottom of sheet)		

## SPECIFICATIONS:

For Web publication only.

CONTROLLED SOURCE INFORMATION ☐ALTERNATE or SUGGESTED SOURCE INFORMATION ☒

VENDOR:  
ADDRESS:  
CITY/STATE/ZIP:  
PHONE NUMBER:  
MFG PART No.:  
CONTACT:

VENDOR:  
ADDRESS:  
CITY/STATE/ZIP:  
PHONE NUMBER:  
MFG PART No.:  
CONTACT:

SEE REVISION SHEET FOR DESCRIPTION OF CHANGE

## SPECIFICATIONS

**PART  
NUMBER:**

380-0031

## REVISION SHEET

[illegible]



**Count on it.**

# Parts Catalog

## 1.5" Golf Sprinkler Body

Model No. 1.5" Golf Body



# Ordering Replacement Parts

To order replacement parts, please supply the part number, the quantity, and the description of each part desired.

## Understanding Reference Numbers

Each identified part in an illustration has a reference number. The reference number for a part also appears in the parts list, along with other information about the part.

This catalog uses two special reference number formats, one to indicate parts in a service assembly and another to indicate the quantity of a given part in an illustration.

## Service Assembly Reference Numbers

Parts in service assemblies have reference numbers in the form a:b. The a represents the reference number of the entire service assembly and the b represents a sequential number unique to each part within the service assembly.

For example, a wheel assembly might be identified by reference number 6, the tire by 6:1, the valve by 6:2, and the wheel by 6:3. When you order the assembly identified by reference number 6, you receive all parts identified by reference numbers 6:1, 6:2, and 6:3. However, you may also order any part individually. Reference numbers of this type appear in illustration and in parts lists.

## Reference Numbers Indicating Quantity

In an illustration, if a reference number indicates more than one part, the reference number has the form nX y. The n represents the quantity of the part, the X is the multiplication symbol, and the y represents the reference number.

For example, in an illustration, the reference number 2X 37 means that two of the parts identified by reference number 37 are indicated.

# List of Abbreviations

**AR:** as required

**ASM:** assembly

**BBC:** blade brake control

**BHTF:** button head thread forming

**CARR:** carriage

**CCW:** counter clockwise

**CW:** clockwise

**DEG:** degrees

**DPA:** Dual Point Adjustment

**ECM:** electronic control module

**EXT:** external

**FH:** flat head

**GA:** gauge

**HD:** heavy-duty

**HF:** hex flange

**HH:** hex head

**HHF:** hex head flange

**HHFTF:** hex head flange thread forming

**HJ:** hex jam

**HLH:** hex lag head

**HOC:** height-of-cut

**HP:** high pressure

**HSBH:** hex socket button head

**HSFH:** hex socket flat head

**HSH:** hex socket head

**HWH:** hex washer head

**HWHTF:** hex washer head thread forming

**HYD:** hydraulic

**LH:** left hand

**LP:** low pressure

**LPG:** Liquefied Petroleum Gas

**NI:** nylon insert

**NPTF:** national pipe thread fine

**PFH:** phillips flat head

**PPH:** phillips pan head

**PPHTF:** phillips pan head thread forming

**PRH:** phillips round head

**PTH:** phillips truss head

**PTO:** power-take-off

**RH:** right hand

**ROPS:** roll-over protection system

**RRB:** rear roller brush

**SFH:** slotted fillister head

**SHH:** slotted hex head

**SHWH:** slotted hex washer head

**SPH:** slotted pan head

**SQH:** square head

**SRH:** slotted round head

**STD:** standard

**TAP:** self tapping

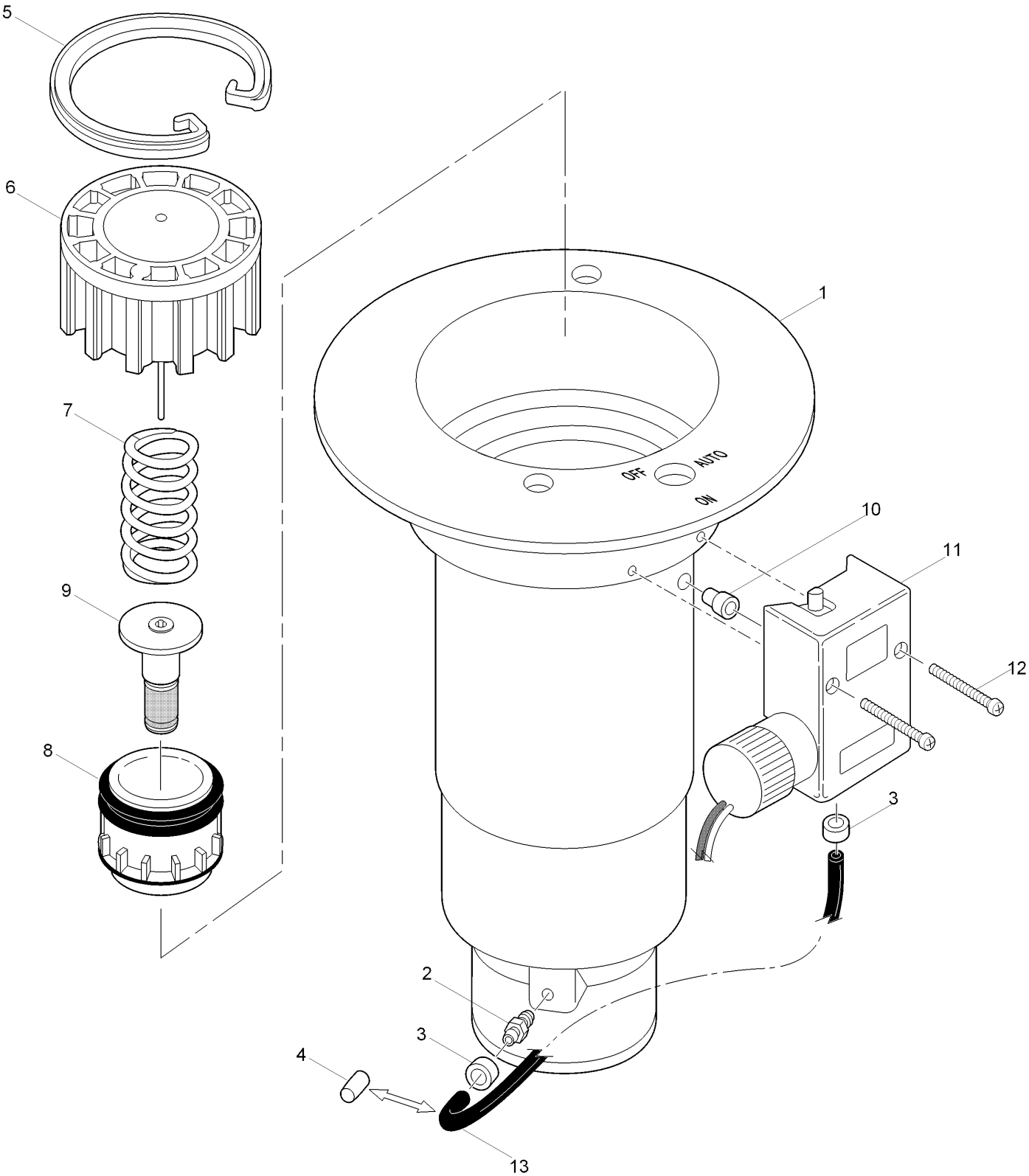
**TTH:** torx truss head

# Contents

Golf Sprinkler Body - 1.5 Inch..... 4

Golf Sprinkler Body - 1.5 Inch - 800S and DT Series ..... 6

# Golf Sprinkler Body - 1.5 Inch



## Golf Sprinkler Body - 1.5 Inch (continued)

<i>Ref.</i>	<i>Part Number</i>	<i>Qty.</i>	<i>Description</i>	<i>Ref.</i>	<i>Part Number</i>	<i>Qty.</i>	<i>Description</i>
1	3-3389	1	Electric W/O Vih, Npt (Includes Items 1-4) ♦	6	102-0626	1	Cylinder Assy., El And No/Com
1	3-3343	1	Hydraulic No W/O Vih, Npt (Includes Items 1-4) ♦	7	102-6411	1	Spring, Valve, El/No, Silver
1	9-1257	1	Com W/O Vih, Npt (Includes Items 1-3 And 13) ♦	7	3-3311	1	Spring-Valve, Com, Black
1	35-5362	1	Electric W/O Vih, Bsp (Includes Items 1-4) □	8	89-1201	1	Piston Assy, Valve, No And Com
1	35-5322	1	Com W/O Vih, Bsp (Includes Items 1-3 And 13) □	8	102-5101	1	Piston Assy., El (Includes Item 9)
1	35-5245	1	Hydraulic No W/O Vih, Bsp (Includes Items 1-4) □	9	35-9645	1	Filter Assy., Metering, El & Nc
1	89-8646	1	Electric W/O Vih, Acme (Includes Items 1-4) ○	10	35-7663	1	Adapter, Pilot Valve To Body
1	89-8652	1	Com W/O Vih, Acme (Includes Items 1-3 And 13) ○	11		1	Pilot Valve Assy. (See Pilot Valve Assembly Section) ▶ ▲
1	89-8654	1	Hydraulic No W/O Vih, Acme (Includes Items 1-4) ○	12	3-2696	2	Screw-Tap, #8
2	9-6002	1	Adapter-Tubing, Threaded, 1/4"	13	9-2623	1	Tube, 1/4" X 8", El
3	900-40		Retainer, Tube, Pr And Cr +	13	9-1876	1	Tube, 1/4" X 12", Com
4	89-8157	1	Cap, 1/4", Poly, No		89-1036		Valve Assy., No (Includes Items 6-8) ● ■
5	3-3304	1	Snap Ring, Valve		89-1037		Valve Assy., Com (Includes Items 6-8) ● ■
6	9-1479	1	Cylinder ASM, No, Com And Drain Valve		102-4003		Valve Assy., El (Includes Items 6-9) ● ■
					9-7271		Adapter-Tubing, Oversized Thread (Replaces Item 2) ● ■

● SERVICE ITEMS

▲ Not serviced separately

□ 1.5 Inch BSP Body Style

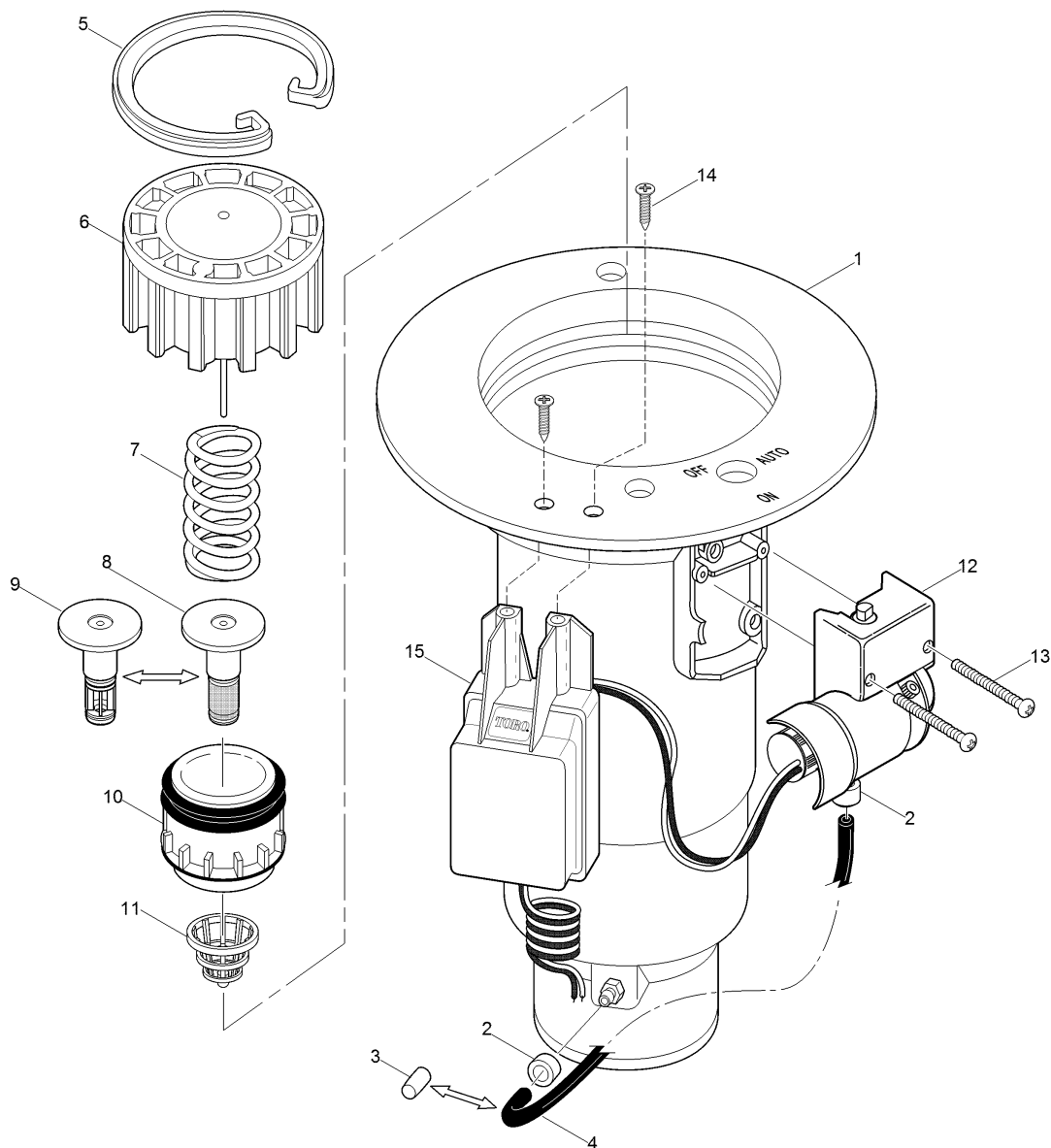
▶ See Pilot Valve Assembly Section.

+ Order Through Finished Goods Distribution System - Minneapolis

■ Not illustrated

♦ 1.5 Inch NPT Body Style

○ 1.5 Inch ACME Body Style



## Golf Sprinkler Body - 1.5 Inch - 800S and DT Series

Ref.	Part Number	Qty.	Description
1	102-1149	1	Electric W/O Vih, Npt (Includes Items 1 And 2) ♦
1	102-1143	1	Hydraulic No W/O Vih, Npt (Includes Items 1 And 2) ♦
1	102-1137	1	Com W/O Vih, Npt (Includes Items 1-3 And 5) ♦
1	118-1134	1	Body Assy., 1.5" Npt (For Decoder Equipped Models) ♦
1	102-1151	1	Electric W/O Vih, Bsp (Includes Items 1 And 2) □
1	102-1139	1	Com W/O Vih, Bsp (Includes Items 1-3 And 5) □
1	102-1145	1	Hydraulic No W/O Vih, Bsp (Includes Items 1 And 2) □

Ref.	Part Number	Qty.	Description
1	118-1135	1	Body Assy., 1.5" Bsp (For Decoder Equipped Models) □
1	102-1153	1	Electric W/O Vih, Acme (Includes Items 1 And 2) ○
1	102-1141	1	Com W/O Vih, Acme (Includes 1-3 And 5) ○
1	102-1147	1	Hydraulic No W/O Vih, Acme (Includes Items 1 And 2) ○
1	118-1136	1	Body Assy., 1.5" Acme (For Decoder Equipped Models) ○
2	900-40	2	Retainer, Tube, Pr And Cr +
3	89-8157	1	Cap, 1/4

### ● SERVICE ITEMS

▲ Not serviced separately

□ 1.5 Inch BSP Body Style

▶ See Pilot Valve Assembly Section.

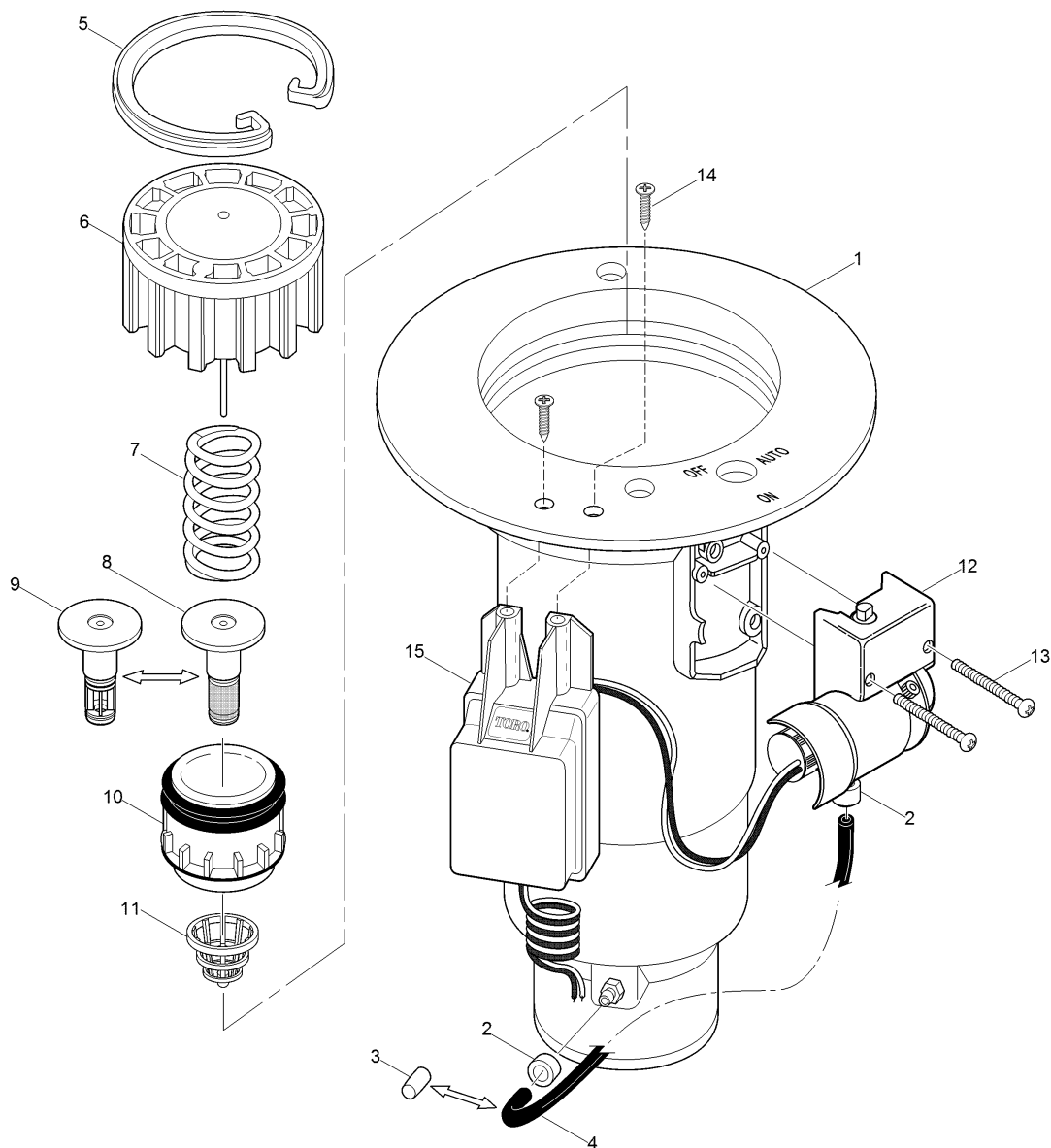
+ Order Through Finished Goods Distribution System - Minneapolis

■ Not illustrated

♦ 1.5 Inch NPT Body Style

○ 1.5 Inch ACME Body Style





## Golf Sprinkler Body - 1.5 Inch - 800S and DT Series (continued)

Ref.	Part Number	Qty.	Description
4	9-2623	1	Tube, 1/4
4	9-2624	1	Tubing, Poly, 1/4
5	3-3304	1	Snap Ring, Valve
6	102-0626	1	Cylinder Assy., EI And No/Com
7	102-6411	1	Spring, Valve, EI/No, Silver
7	3-3311	1	Spring-Valve, Com, Black
8	35-9645	1	Filter Assy., Metering, EI & Nc
9	102-6530	1	Filter Assy., Non-Metering, No/Com
10	102-6311	1	Piston Assy., Valve, EI & Nc

Ref.	Part Number	Qty.	Description
10	102-5101	1	Piston Assy., EI
11	102-6065	1	Rock Screen, 1.5
12		1	Pilot Valve Assy., (See Pilot Valve Assembly Section.) ▶▲
13	3-2696	2	Screw-Tap, #8
14	363-6396	2	Screw (For Decoder Equipped Models)
15	118-0841	1	Gdc Module W/ Solenoid
15	DEC-ISP-1GB	1	Gdc Module W/O Solenoid
	102-6309	1	Valve Assy., Com ●■
	102-6310	1	Valve Assy., No ●■
	102-4003	1	Valve Assy., EI ●■

### ● SERVICE ITEMS

▲ Not serviced separately

□ 1.5 Inch BSP Body Style

▶ See Pilot Valve Assembly Section.

✚ Order Through Finished Goods Distribution System - Minneapolis

■ Not illustrated

◆ 1.5 Inch NPT Body Style

○ 1.5 Inch ACME Body Style



**Count on it.**