



MODEL NO. 03770

## INSTALLATION INSTRUCTIONS

### RM 450D CRUISE CONTROL KIT

(FOR MODELS 03700 &amp; 03701 - 00001 &amp; UP)

**IMPORTANT:** Since these installation instructions cover only a minimal amount of information necessary to maintain and operate your machine, we suggest that you keep this material with your traction unit operator's manual so that both may be referred to for instructions concerning safe operation and proper maintenance procedures.

**Note:** Right and left sides of machine are determined from operator's position.

#### INSTALL TRACTION PEDAL SWITCH (Fig. 1)

1. Park the machine on a level surface, lower the cutting units, set parking brake and turn engine off.
2. Disconnect negative (-) battery cable from battery.
3. Remove (2) roll pins and bolt securing lower link to traction pedal. Discard roll pins.

4. Remove flanged bushing from lower link and traction pedal. Discard washers on bushings.
5. Install boot over new traction pedal switch.
6. Position lower link, traction pedal and teflon spacer between switch. Slotted hole in switch to be positioned on left side of traction pedal.
7. Assemble switch, lower link and teflon spacer to traction pedal with flanged bushing.
8. Secure components together with bolt, (2) flat washers and nut.

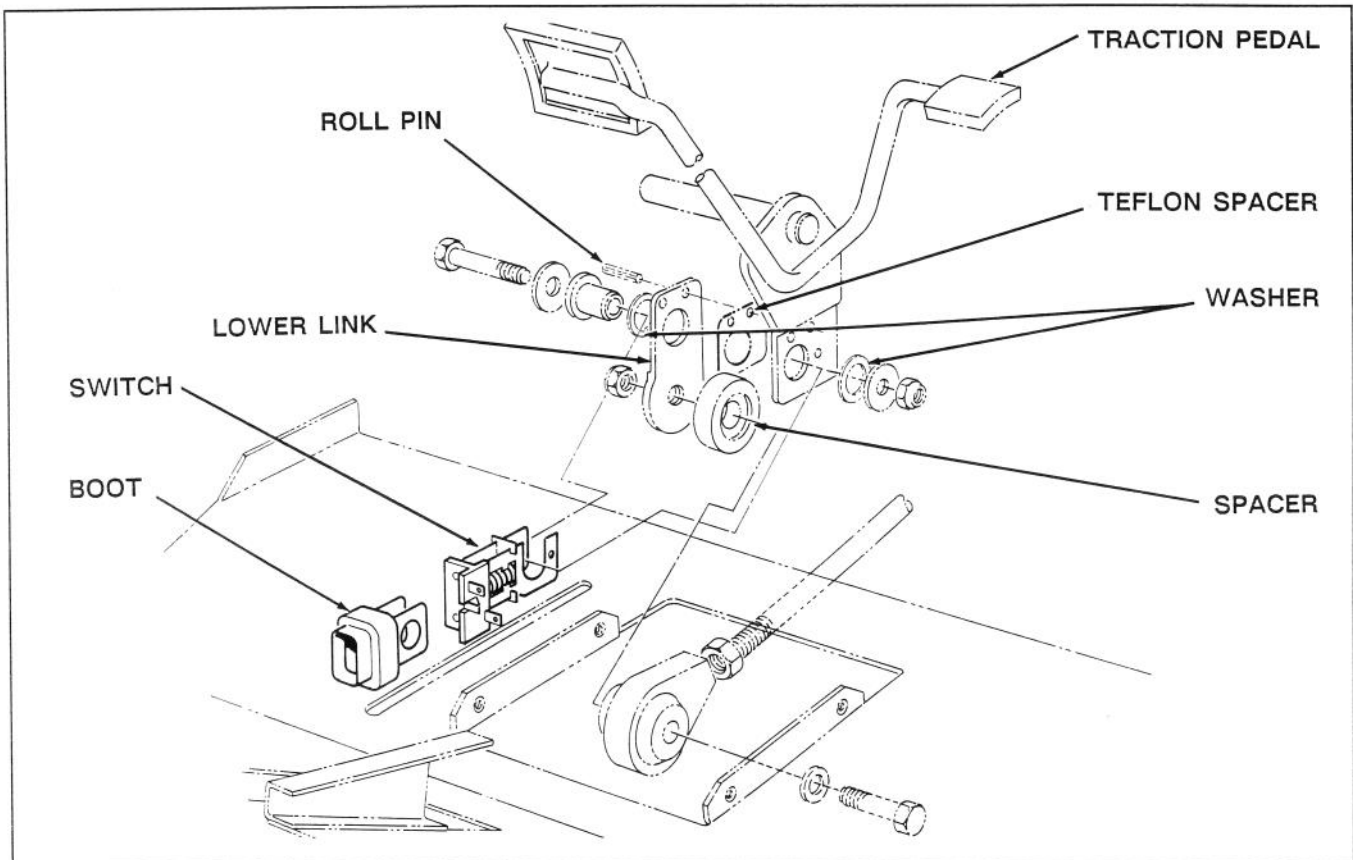


Figure 1

#### INSTALL MAGNETS (Fig. 2)

1. Remove (2) bolts and lockwashers securing L-shaped dampener bracket to front of pump adapter plate. Remove bracket from pump plate.

2. Remove bolt, washers and nut securing dampener to bracket. Remove dampener from bracket.

3. Install new bracket and plate to front of pump adapter plate with (2) 1/2 - 20 x 1" lg. capscrews and lockwashers.
4. On inside of right bracket arm, mount a pivot with a M8 x 30 mm capscrew and lockwasher.
5. On outside of left bracket arm mount dampener and on inside mount pivot with a M8 x 45 mm capscrew, (2) belleville washers and a flatwasher.

6. Install a compression spring and magnet onto each pivot. Magnets to be positioned so tabs fit into slots in bracket.
7. Install arm assembly to traction pump lever with a collar, (2) M6 x 25mm capscrews and lockwashers.

**Note:** Threaded holes in lever may have to be re-tapped to clean out any debris.

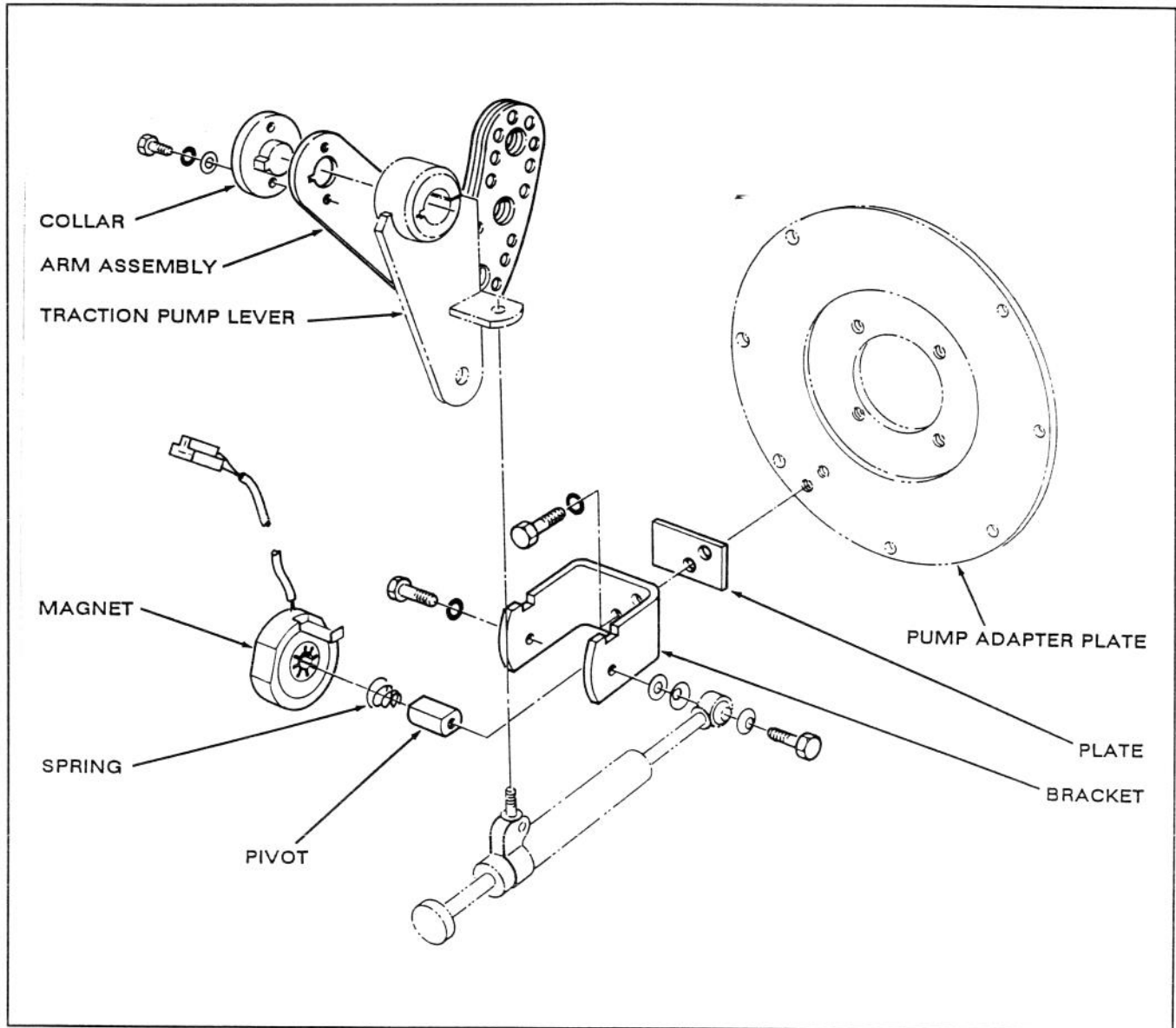


Figure 2

### MOUNT ELECTRICAL COMPONENTS (Fig. 3)

1. Slide capacitor into R-clamp. Mount both relays to R-clamp with a 1/4 - 20 x 1" lg. capscrew, lockwasher and nut as shown in figure 3.
2. Mount assembled parts to underside of bracket with a internal tooth lockwasher and nut.
3. Secure bracket to upper right mounting hole in gear pump with a 1/2 - 13 x 1" capscrew, lockwasher and flatwasher.
4. Remove (2) pan head screws securing instrument panel to frame.
5. On instrument panel, locate position for mounting indicator light and switch for cruise control.
6. Drill a 3/4" dia. hole for indicator light and a 1/2" dia. hole for switch.
7. Mount switch and indicator light to instrument panel with hardware supplied. Switch to be positioned so it faces forward. Do not reinstall instrument panel at this time.

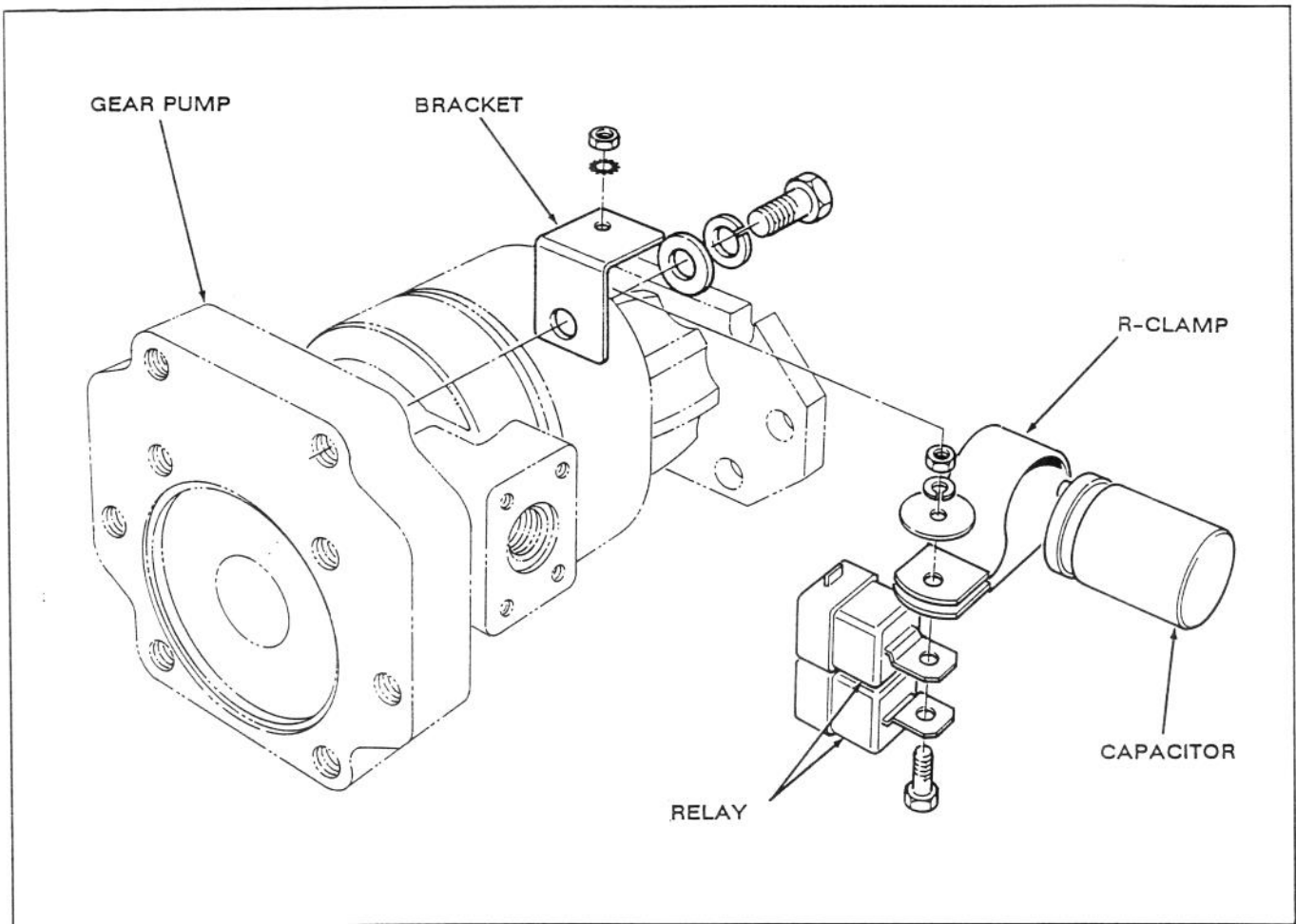


Figure 3

#### INSTALL WIRE HARNESS (Fig. 4)

1. Plug connector at end of harness into traction pedal switch. Route harness toward rear of machine to relays.
  2. Plug (2) connectors into relays.
  3. Secure yellow and gray wires from relay connector to positive terminal on capacitor. Remaining black wire from this relay will be connected later in assembly.
  4. Secure black wire from other relay to negative terminal on capacitor.
  5. Plug (2) connectors into magnets. Remaining wire from magnets will be connected later in assembly.
  6. Connect orange wire from relay to #3 post on cruise control switch.
  7. Connect yellow wire from relay to #4 post on cruise control switch with ring terminal and with spade terminal to indicator light.
  8. Connect #1 and #5 posts on cruise control switch with green jumper wire.
  9. Connect white / black striped wire from #2 post on cruise control switch to instrument panel terminal strip with white / black striped wires connected to it.
  10. Secure green wire from harness with bullet connector to green wire with bullet connector mounted loose to frame behind seat. Connect other end of green wire (loose in instrument panel) to instrument panel terminal strip where cruise switch was connected to (white / black striped wire).
  11. Connect separate black wire to instrument panel terminal strip ground with ring terminal and to indicator light with spade terminal.
  12. Secure remaining ground wires from relay, magnets and existing cruise control wire together with a capscrew, (2) flatwashers, (2) lockwashers and a nut.
- Note:** If existing ground wire for cruise is not connected to instrument panel ground terminal, do so.
13. Make sure all of the wires are clear of hot or moving parts.

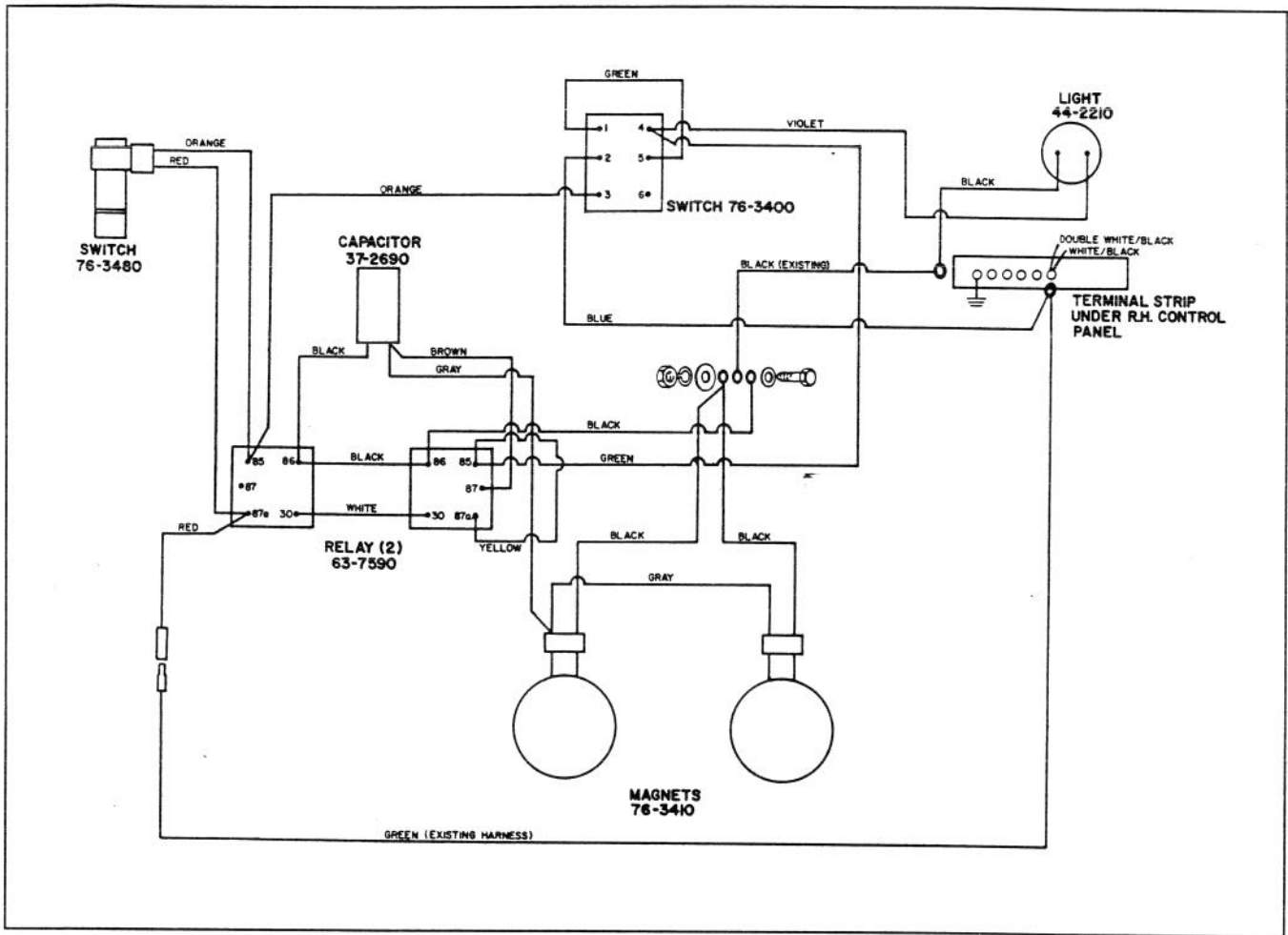


Figure 4

### CRUISE CONTROL OPERATION

#### To Engage Cruise Control

- A. Move switch to the "ON" position.
- B. Depress traction pedal to attain desired speed.
- C. With pedal depressed and desired speed attained, continue to depress pedal and move switch to "ENGAGE" position. Indicator lamp will light when engaging cruise control and when it is on.
- D. While holding switch in the "ENGAGED" position, release traction pedal.

- E. Release switch allowing it to return to "ON" position.

#### To Disengage Cruise Control

- A. Depress traction pedal to go reverse.  
or
- B. Depress traction pedal to go forward.  
or
- C. Turn switch to "OFF" position.  
or
- D. Turn ignition switch to "OFF" position, stopping engine.

**Note:** When not using cruise control, position switch in "OFF" position.