



MODEL NO. 30128

INSTALLATION INSTRUCTIONS

44" & 52" SIDE DISCHARGE BAGGING KIT (COMMERCIAL WALK MOWERS)

MOUNT BAFFLES

1. Position baffle inside cutting deck opening so end is aligned with edge of deck opening and against front wall and ceiling. Clamp baffle to front wall of deck in storage position (Fig. 1).

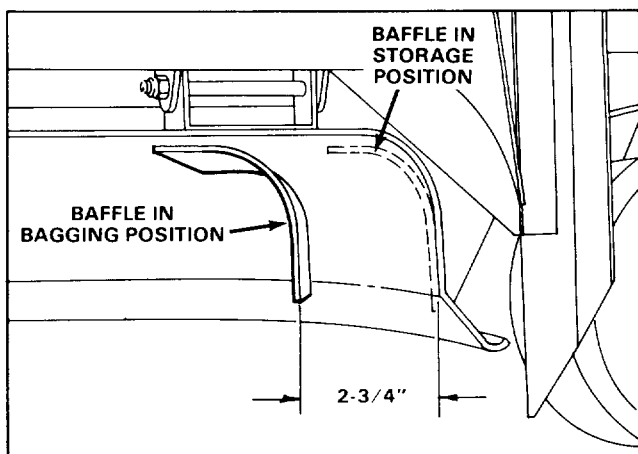


Figure 1

2. Mark and drill (2) 11/32" dia. holes in top of deck. Secure inside end of baffle to deck with a 5/16-18 x 3/4" lg. sems screw.

3. Pivot outside end of baffle rearward until there is a distance of 2-3/4" between baffle and front wall of deck.

4. Mark and drill an 11/32" dia. hole in top of deck. Secure baffle to deck with a 5/16-18 x 3/4" lg. sems screw. Make sure baffle mounting screws are tight.

Note: Unused mounting hole drilled in deck is for storing baffle when not bagging. Remove outside sems screw, pivot baffle forward and resecure.

INSTALL MOUNTING BEAMS AND BACK PANEL

Note: Make sure drive belt is properly tensioned and height-of-cut is set in mid position (2 1/2" setting).

1. Secure mounting beams to back panel with retainer bolts and 3/8-16 flange nuts. Top of beam brackets should be flush with top of back panels (Fig. 2).

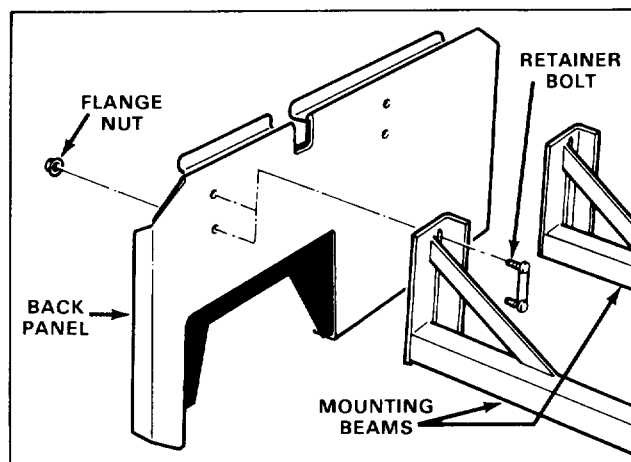


Figure 2

2. Position back panel and mounting beam assembly onto cutting deck and carrier frame, aligning appropriate mounting holes with carrier frame (Fig. 3). Rubber extension should be touching back edge of discharge opening (Fig. 4).

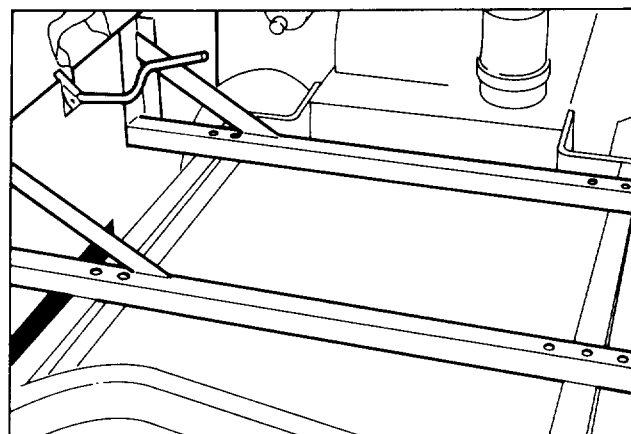


Figure 3

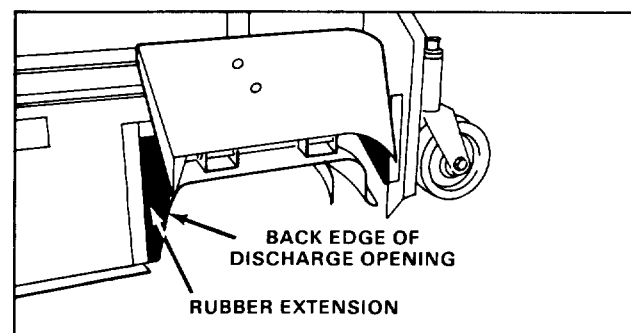


Figure 4

3. Using each mounting beam as a template, locate and drill (4) 1/2" dia. holes in carrier frame. (Step #3 pertains only to cutting deck carrier frames with serial numbers prior to 70001.)

4. On 44" bagging kits, insert flat end of curved bolt thru appropriate bottom hole in rear beam, then insert threaded end of bolt thru appropriate hole in carrier frame and secure with washer and flange nut. Repeat procedure on opposite side of rear beam (Fig. 5). Secure front beam to carrier frame with (2) 3/8 - 16 x 2-1/2" lg. capscrews, (4) flatwashers and (2) locknuts. Washers to be positioned on top of beam and under carrier frame.

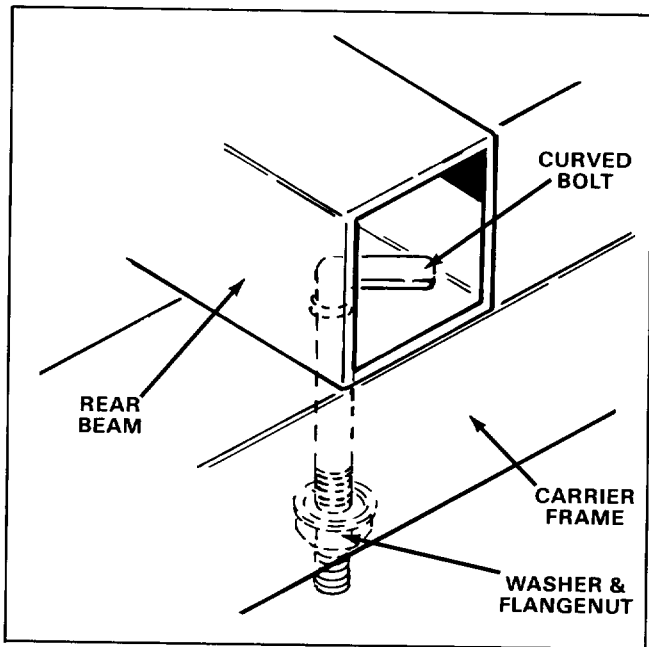


Figure 5

5. On 52" bagging kits, secure front beam to carrier frame with (2) 3/8- 16 x 2-1/2" lg. capscrews, (4) flatwashers and (4) flangenuts. Secure rear beam to carrier frame with (2) 3/8-16 x 4-1/2" lg. capscrews, (4) flatwashers and (4) locknuts. Washers to be positioned on top of beam and under carrier frame.

6. Measure 7" (on 44" deck) or 7-1/4" (on 52" deck) from edge of deflector and draw a parallel line (Fig. 6).

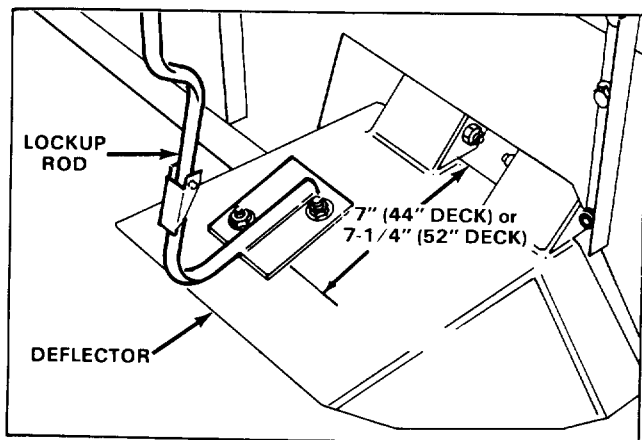


Figure 6

Position outside mounting hole of lockup rod on line drawn on deflector. Raise deflector and move lockup rod fore and aft until rod is positioned in center of back panel slot (Fig. 7).

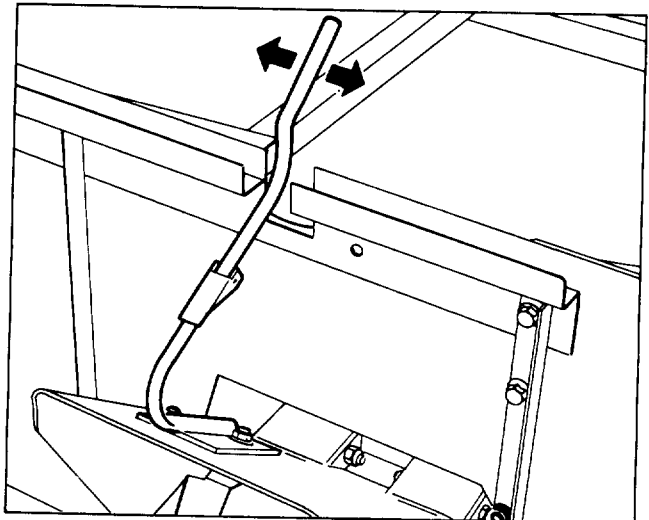


Figure 7

7. Using lockup rod as a template (Fig. 6), mark and drill (2) 11/32" dia. holes in deflector. Secure lockup rod to deflector with (2) 5/16-18 x 3/4" capscrews and 5/16-18 flangenuts. Position flangenuts on top.

ASSEMBLE AND MOUNT BAG

1. Slide bag support tube thru front seam in bag. Do not secure tube to bag tray at this time (Fig. 8).

2. Position rear bag support tube between bag rod and grass bag tray (Fig. 8).

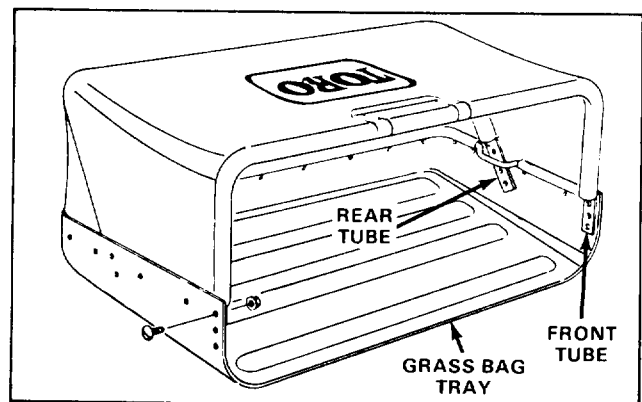


Figure 8

3. Secure front tube to grass tray with (6) 5/16-18 x 3/4" lg. truss head screws and (6) 5/16-18 flangenuts.

4. Secure rear tube to grass tray with remaining truss head screws. Use only bottom (2) mounting holes on each side of tube when mounting.

5. Mount bag assembly to back panel by raising deflector lockup rod, hooking front bag support tube

onto back panel bag support and lowering bag against back panel. Hook lockup latch onto bag tube.

Note: Adjust back panel height so bag tray is slightly below bottom of deck.

Note: If bagging kit is removed for regular cutting (non bagging), plug lockup rod mounting holes in deflector with capscrews and flangenuts removed.

BAGGING TIPS



WARNING

Do not operate mower without the grass deflector or entire grass catcher in place.


1. Always install bagging attachment before starting the engine. When removing or reinstalling bag **SHUT ENGINE AND BLADES OFF.**

2. Cut grass when it is dry to avoid slippery footing and clogging mower housing and discharge area.

3. Cut long grass with height-of-cut at highest setting. Then cut grass again using lower setting.

4. Empty the bag often to reduce possibility of clogging mower housing and discharge area.

5. Avoid bagging when mowing rough, uncertain areas.



WARNING

The grass bag is made of material that will catch and contain the majority of foreign objects, such as small stones that may be thrown into it. However, under normal use, the bag material is subject to deterioration and wear; therefore, check bag frequently. If bag is defective, replace it with a genuine TORO bag.

