



Carbon Canister Filter Kit

Reelmaster® 5410/5510-G Traction Unit

Model No. 125-8790

Installation Instructions

⚠ WARNING

CALIFORNIA Proposition 65 Warning

This product contains a chemical or chemicals known to the State of California to cause cancer, birth defects, or reproductive harm.

Loose Parts

Use the chart below to verify that all parts have been shipped.

Description	Qty.	Use
Bushing	1	Install the fuel-tank fitting.
90 degree fitting	1	
Fuel-tank cap	1	Replace the fuel-tank cap.
Canister bracket	1	Install the carbon canister.
Carbon canister	1	
Bolt (5/16-18 x 1 inch)	2	
Self-tapping screw	1	
Fuel hose (5/16 x 96 inches)	1	Install the hoses.
Hose clamp (9/16 inch)	1	
Breather	1	
Fuel hose (1/4 x 65 inches)	1	
Hose clamp (7/8 inch)	1	
Fuel hose (1/2 x 2 inches)	1	
Fuel hose (3/16 x 6-1/4 inches)	1	
Hose clamp (7/16 inch)	1	
Vacuum-operated control valve	1	
Hose clamp (1/2 inch)	2	
Fuel hose (1/4 x 6 inches)	2	
Jump fitting (3/16 to 1/4 inch)	1	
Tee (1/4 inch)	1	
Tee (1/2 to 5/16 inch)	1	
Cable tie	12	
Toro emissions decal	1	Apply the emissions decals.
Kubota engine emissions decal	1	



Installing the Fuel-tank Fitting

1. Locate the vent boss on the top of the fuel tank (Figure 1). Drill a 17/32 inch diameter hole through the center of the boss.

Note: Drill slowly, and remove the plastic spirals before they fall into the tank.

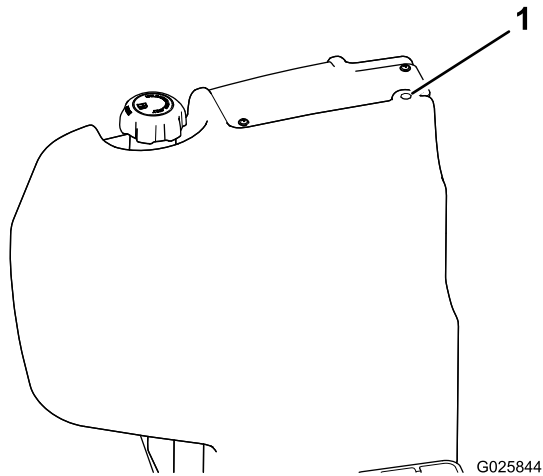


Figure 1

1. Vent boss

2. Insert the bushing into the hole in the vent boss (Figure 2).

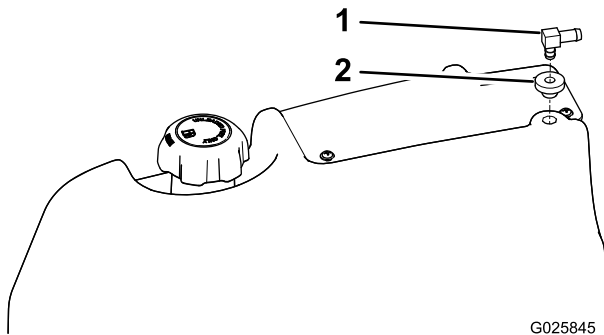


Figure 2

1. 90 degree fitting
2. Bushing

3. Press the 90 degree fitting into the bushing, and position it as shown in Figure 2.

Replacing the Fuel-tank Cap

Remove the existing fuel-tank cap assembly, and replace it with the new non-vented cap (Figure 3).

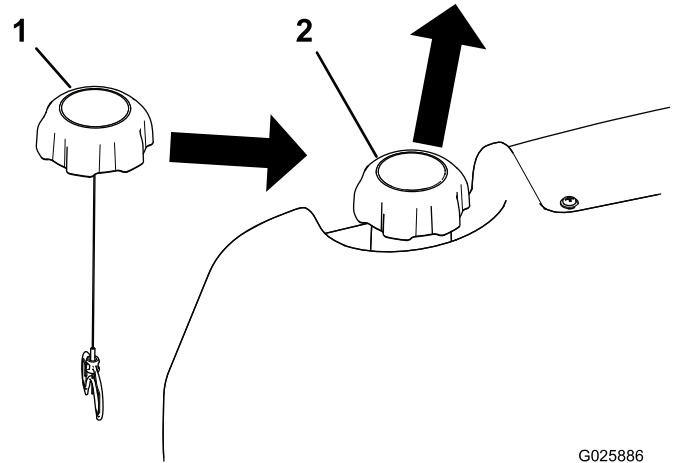


Figure 3

1. New fuel-tank cap
2. Existing fuel-tank cap

Installing the Carbon Canister

1. Remove the floorboard service panel and open the engine hood.
2. Remove the hardware from the hood guide on the left-side frame rail.

Note: The hood-latch bracket is also retained with this hardware.

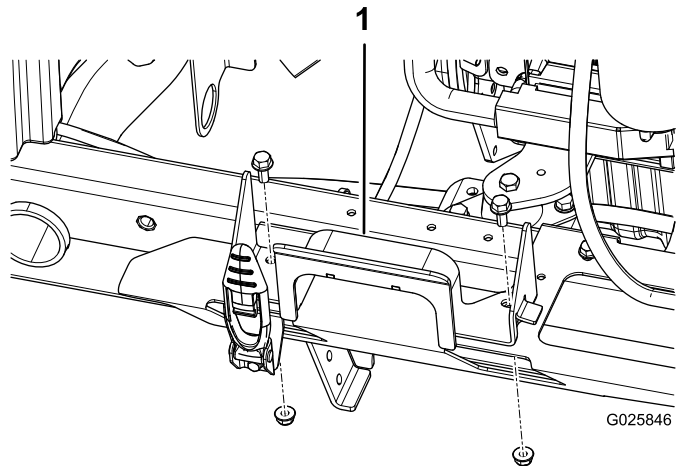


Figure 4

1. Hood guide

3. Place the canister bracket on top of the hood guide. Secure the canister bracket, the hood guide, and the hood-latch bracket using the existing flange nuts and the longer 5/16-18 x 1 inch bolts provided.

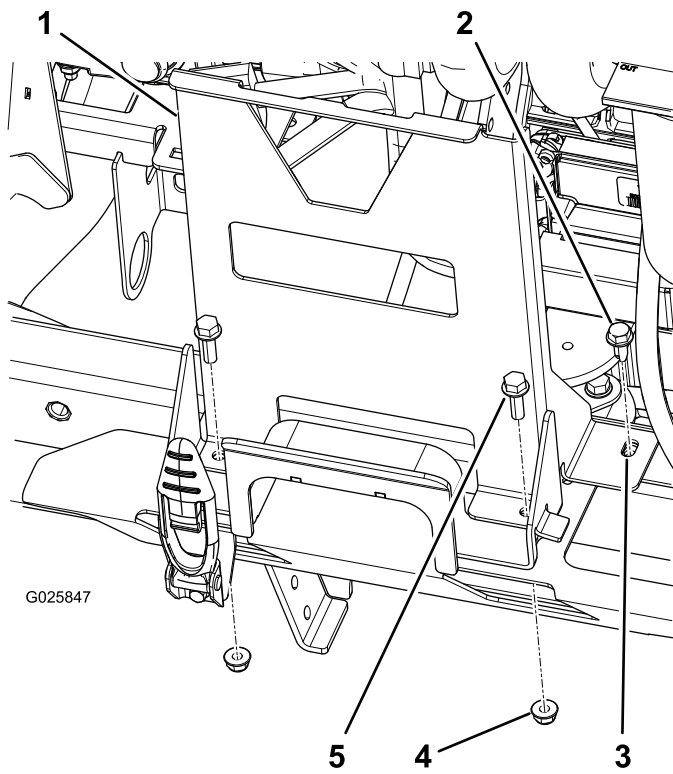


Figure 5

- | | |
|-----------------------|-------------------------------|
| 1. Canister bracket | 4. Flange nut (existing), 2 |
| 2. Self-tapping screw | 5. Bolt (5/16-18 x 1 inch), 2 |
| 3. Slot | |

4. Using the side slot in the canister bracket as a template, center punch the frame rail in the center of this slot and drill a 9/32 inch hole through the side skirt and the frame rail.
5. Secure this location with the self-tapping screw.
6. Slide the carbon canister onto the canister bracket, and snap it into place with the locking tab.

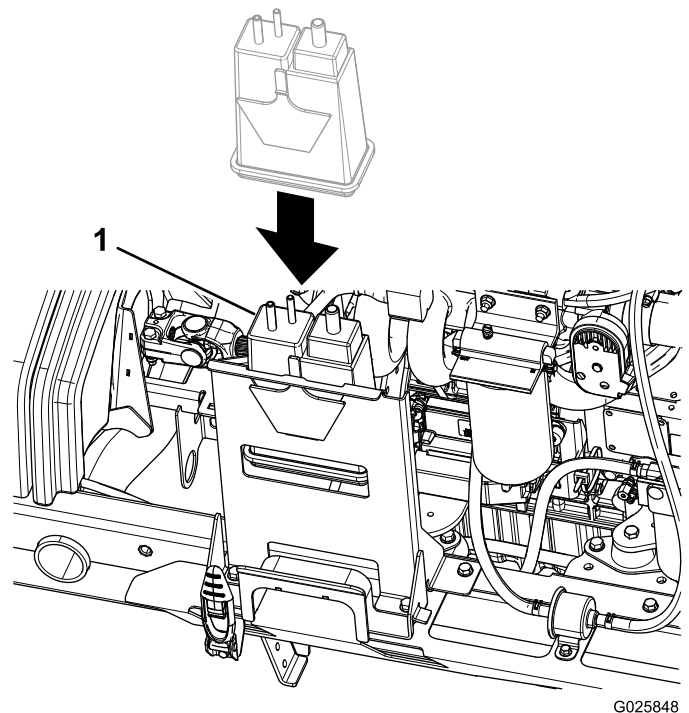


Figure 6

1. Carbon canister

Installing the Hoses

1. Secure the fuel hose (5/16 x 96 inches) to the vent fitting on the fuel tank with a clamp.

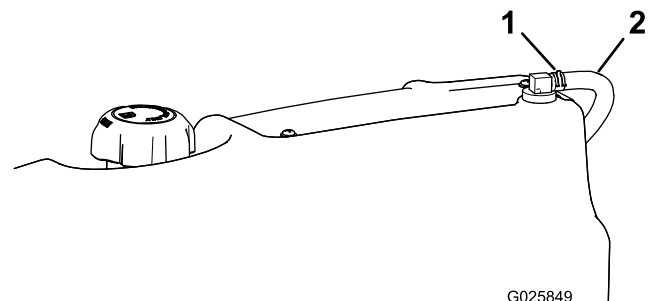


Figure 7

- | | |
|---------------------------|---------------------------------|
| 1. Hose clamp (9/16 inch) | 2. Fuel hose (5/16 x 96 inches) |
|---------------------------|---------------------------------|

2. Route this hose down the tank side channel following the routing of the existing fuel hose.

Note: It may be necessary to loosen the fuel-tank clamps to route the vent hose.

3. Branch this hose away from the existing fuel hose when it reaches the location of the carbon canister. Continue the hose up the side of the canister bracket and arc the hose over onto the port marked "Tank" on the top of the canister.

Note: No clamp is required at this location.

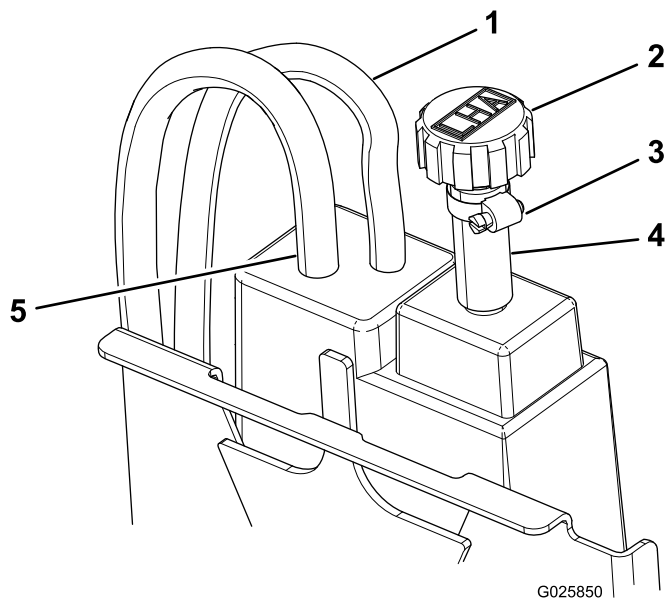


Figure 8

1. Fuel hose (1/4 x 65 inches)
2. Breather
3. Hose clamp (7/8 inch)
4. Hose (1/2 x 2 inches)
5. Fuel hose (5/16 x 96 inches)

4. Locate the port marked "Air" on the top of the carbon canister. Connect the 1/2 x 2 inch hose to this port.

Note: No clamp is required at this location.

5. Insert the breather into the 1/2 inch hose and secure it with a clamp.
6. Locate the port marked "Purge" on top of the carbon canister. Attach the 1/4 x 65 inch fuel hose.

Note: No clamp is required at this location.

7. Route this hose down the side of the canister bracket following the previously routed tank vent hose back to the existing fuel hose. Follow the fuel hose routing back to the engine fuel rail and place the hose end under the air cleaner.
8. Connect the vacuum-operated control valve to the end of the purge-port hose, and secure the hose with a clamp. Attach the 1/4 x 6 inch fuel hose to the other 1/4 inch port on the control valve, and secure the hose with a clamp.

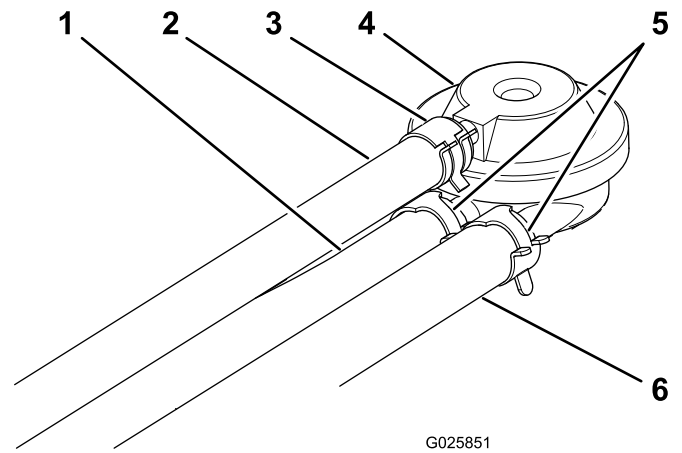


Figure 9

1. Purge-port hose (1/4 x 65 inch fuel hose)
2. Fuel hose (3/16 x 6-1/4 inches)
3. Hose clamp (7/16 inch)
4. Vacuum-operated control valve
5. Hose clamps (1/2 inch)
6. Fuel hose (1/4 x 6 inches)

9. Assemble the vacuum pilot line as follows:

- A. Connect the 3/16 x 6-1/4 inch fuel hose to the 1/4 x 6 inch fuel hose using the 3/16 to 1/4 inch jump fitting.

Note: No clamps are required at the jump fitting.

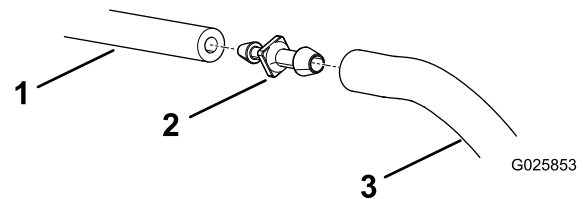


Figure 10

1. Fuel hose (3/16 x 6-1/4 inch)
2. Jump fitting (3/16 to 1/4 inch)
3. Fuel hose (1/4 x 6 inch)

- B. Attach the 3/16 inch end to the 3/16 inch vacuum pilot port on the control valve. Secure the hose with a clamp.
10. Locate the engine PCV vacuum hose (Figure 11). Mark the midpoint and cut this hose in half. Connect the 2 cut ends of the hose using the 1/4 inch tee.

Note: No clamps are required.

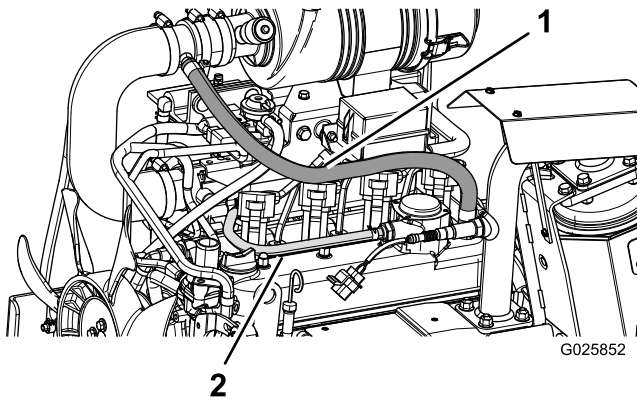


Figure 11

1. Crankcase breather hose 2. PCV vacuum hose

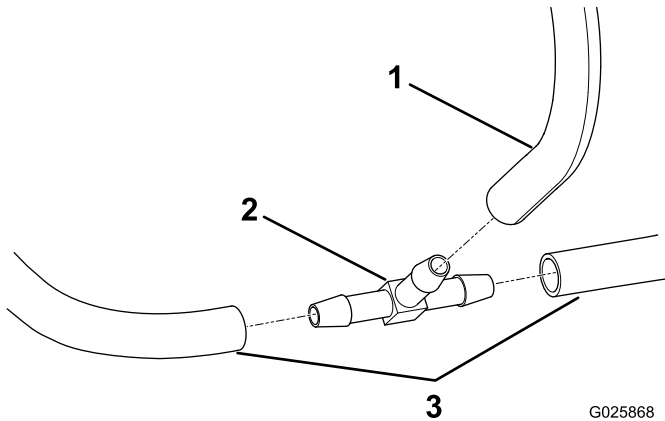


Figure 12

1. Fuel hose (1/4 x 6 inches), 3. PCV vacuum hose to the jump fitting
2. Tee (1/4 inch)

11. Connect the 1/4 inch end of the control-valve vacuum pilot line to the remaining port of the tee that you installed in 7.

Note: No clamp is required.

12. Locate the crankcase breather hose running from the engine rocker cover to the air-cleaner inlet tee (Figure 11). Mark the midpoint and cut this hose in half. Connect the hoses using the 1/2 to 5/16 inch tee.

Note: No clamps are required.

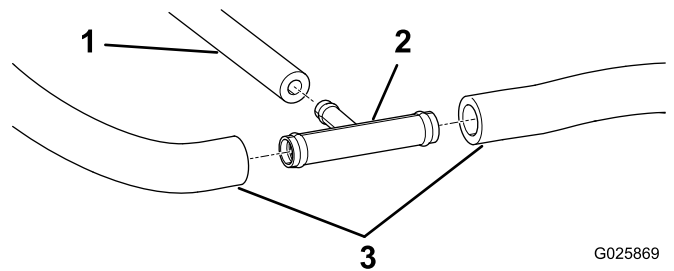


Figure 13

1. Fuel hose (1/4 x 6 inches), 3. Crankcase breather hose to the control valve (existing, cut)
2. Tee (1/2 to 5/16 inch)

13. Connect the 1/4 inch hose from the vacuum control valve to the remaining port on the tee used in 9.

Note: No clamp is required.

14. Use the cable ties to secure the tank vent hose to the existing fuel hose routing. Secure the tank vent hose and the purge port hose to the side of the canister bracket, using the opening in the canister bracket. Secure the purge hose to the existing fuel hose routing up to the fuel rail.

Applying the Emissions Decals

1. Punch out the month and year of the traction unit manufacture on the Toro emissions decal, then place the decal on the operator platform (Figure 14).

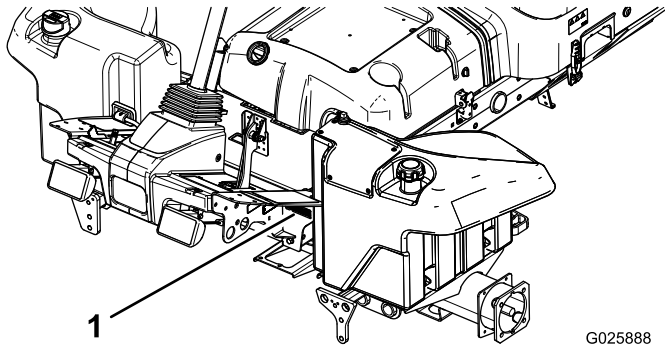


Figure 14

G025888

1. Emissions decal

2. Place the Kubota engine emissions decal over the existing decal, located on the valve cover of the engine (Figure 15).

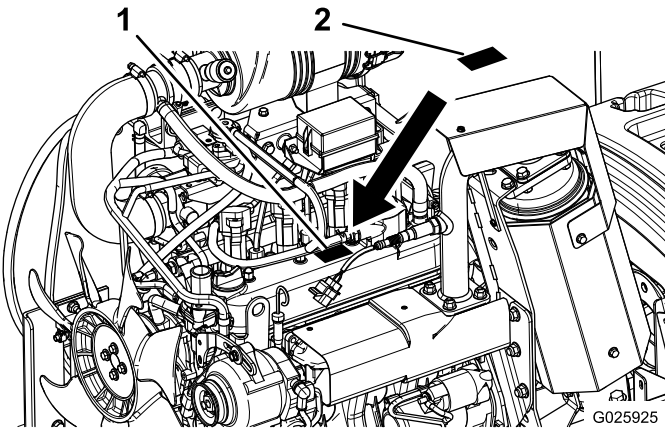


Figure 15

G025925

1. Existing decal
2. New Kubota emissions decal

Notes:



Count on it.