



Count on it.

Parts Catalog

**27-inch 11-Blade Cutting Unit
Reelmaster® 7000-D Traction Unit**

Model No. 03711—Serial No. 313000001 and Up



Ordering Replacement Parts

To order replacement parts, please supply the part number, the quantity, and the description of each part desired.

Understanding Reference Numbers

Each identified part in an illustration has a reference number. The reference number for a part also appears in the parts list, along with other information about the part.

This catalog uses two special reference number formats, one to indicate parts in a service assembly and another to indicate the quantity of a given part in an illustration.

Service Assembly Reference Numbers

Parts in service assemblies have reference numbers in the form a:b. The a represents the reference number of the entire service assembly and the b represents a sequential number unique to each part within the service assembly.

For example, a wheel assembly might be identified by reference number 6, the tire by 6:1, the valve by 6:2, and the wheel by 6:3. When you order the assembly identified by reference number 6, you receive all parts identified by reference numbers 6:1, 6:2, and 6:3. However, you may also order any part individually. Reference numbers of this type appear in illustration and in parts lists.

Reference Numbers Indicating Quantity

In an illustration, if a reference number indicates more than one part, the reference number has the form nX y. The n represents the quantity of the part, the X is the multiplication symbol, and the y represents the reference number.

For example, in an illustration, the reference number 2X 37 means that two of the parts identified by reference number 37 are indicated.

List of Abbreviations

AR: as required

ASM: assembly

BBC: blade brake control

BHTF: button head thread forming

CARR: carriage

CCW: counter clockwise

CW: clockwise

DEG: degrees

DPA: Dual Point Adjustment

ECM: electronic control module

EXT: external

FH: flat head

GA: gauge

HD: heavy-duty

HF: hex flange

HH: hex head

HHF: hex head flange

HHFTF: hex head flange thread forming

HJ: hex jam

HLH: hex lag head

HOC: height-of-cut

HSBH: hex socket button head

HSFH: hex socket flat head

HSH: hex socket head

HWH: hex washer head

HWHTF: hex washer head thread forming

HYD: hydraulic

LH: left hand

LP: Liquefied Petroleum Gas

LPG: Liquefied Petroleum Gas

NI: nylon insert

NPTF: national pipe thread fine

PFH: phillips flat head

PPH: phillips pan head

PPHTF: phillips pan head thread forming

PRH: phillips round head

PTH: phillips truss head

PTO: power-take-off

RH: right hand

ROPS: roll-over protection system

RRB: rear roller brush

SFH: slotted fillister head

SHH: slotted hex head

SHWH: slotted hex washer head

SPH: slotted pan head

SQH: square head

SRH: slotted round head

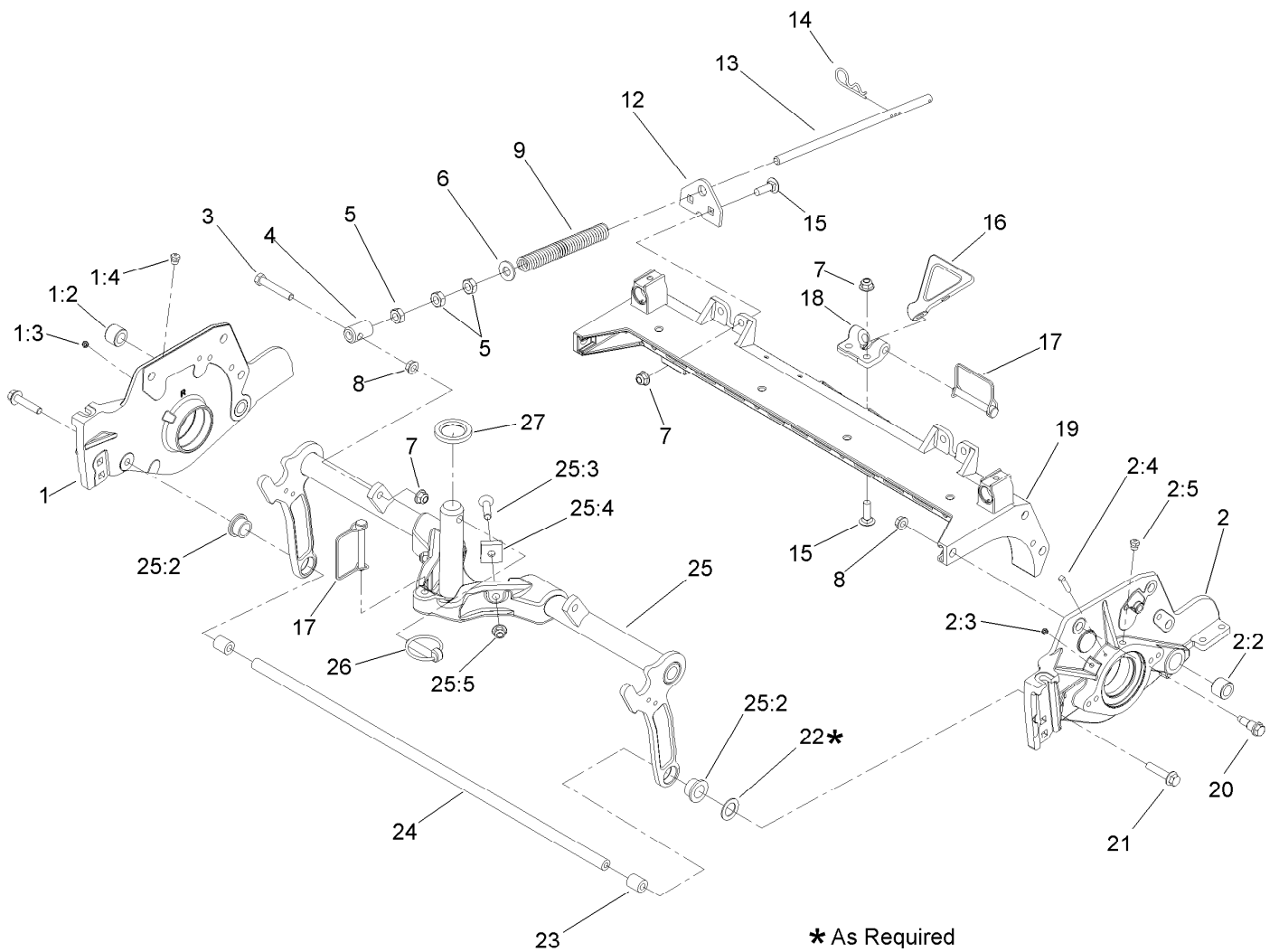
STD: standard

TAP: self tapping

TTH: torx truss head

Contents

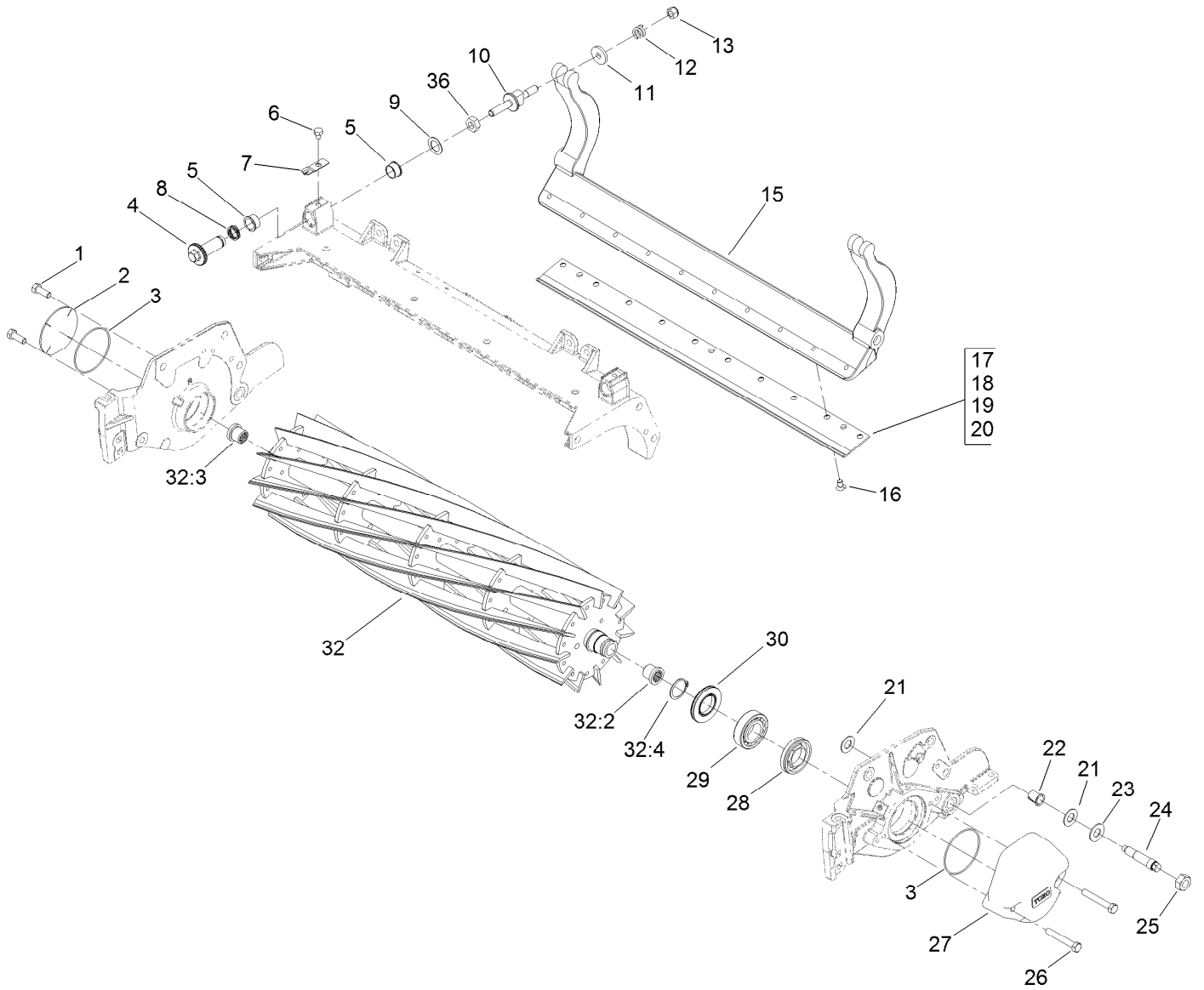
Frame Assembly.....	4
Reel and Bedbar Assembly	5
Optional Heavy-Duty MVP Kit No. 120-7230.....	6
Roller Assembly	7
Long Roller Assembly No. 112-8915.....	8
Optional Short Roller Assembly No. 119-4286	9
Optional Full Front Roller Assembly No. 114-9383.....	10
Wiehle Roller Assembly No. 117-0960	11
Optional Shoulder Roller Assembly No. 119-0630	12
Optional High Height-of-Cut Assembly No. 110-9600	13
Shield Assembly.....	14
Optional Tool Assembly.....	15
Attachments and Accessories	16



Frame Assembly

Ref.	Part Number	Qty.	Description	Ref.	Part Number	Qty.	Description
1	108-9083	1	Plate-Side, RH	14	92-2762	1	Pin-Hair
1:2	106-9618	1	Bushing-Rubber	15	3231-25	4	Bolt-CARR
1:3	302-5	1	Fitting-Grease	16	119-8010-03	1	Kickstand ●
1:4	302-39	1	Fitting-Plug	17	107-7400	2	Pin-Snapper
2	108-9082	1	Plate-Side, LH	18	110-4058	1	Bracket-Chain
2:2	106-9618	1	Bushing-Rubber	19	112-8935	1	Frame-Center
2:3	302-5	1	Fitting-Grease	20	107-2979	6	Bolt-Shoulder
2:4	107-7447	1	Screw-Set, SQH	21	3234-19	2	Screw-HHF
2:5	302-39	1	Fitting-Plug	22	67-9410	1	Washer
3	104-3396	1	Screw-HH	23	108-4279	2	Spacer-Frame
4	99-8662	1	Tube-Spring	24	117-3752	1	Tube-Support
5	3218-5	3	Nut-Jam	25	112-8937	1	Carrier Frame ASM
6	87-7270	1	Washer-Thrust	25:2	93-2877	2	Bushing
7	104-8301	5	Nut-Flange, NI	25:3	3289-17	2	Screw-FH, Hex Socket
8	3290-357	7	Nut-HHF, Whiz	25:4	119-1603	2	Spacer-Pivot
9	119-4275	1	Spring-Compression	25:5	104-8301	2	Nut-Flange, NI
12	110-4069	1	Bracket	26	283-71	1	Pin-Lynch
13	115-2007	1	Rod-Spring	27	94-8946	1	Washer-Thrust

● Optional Equipment

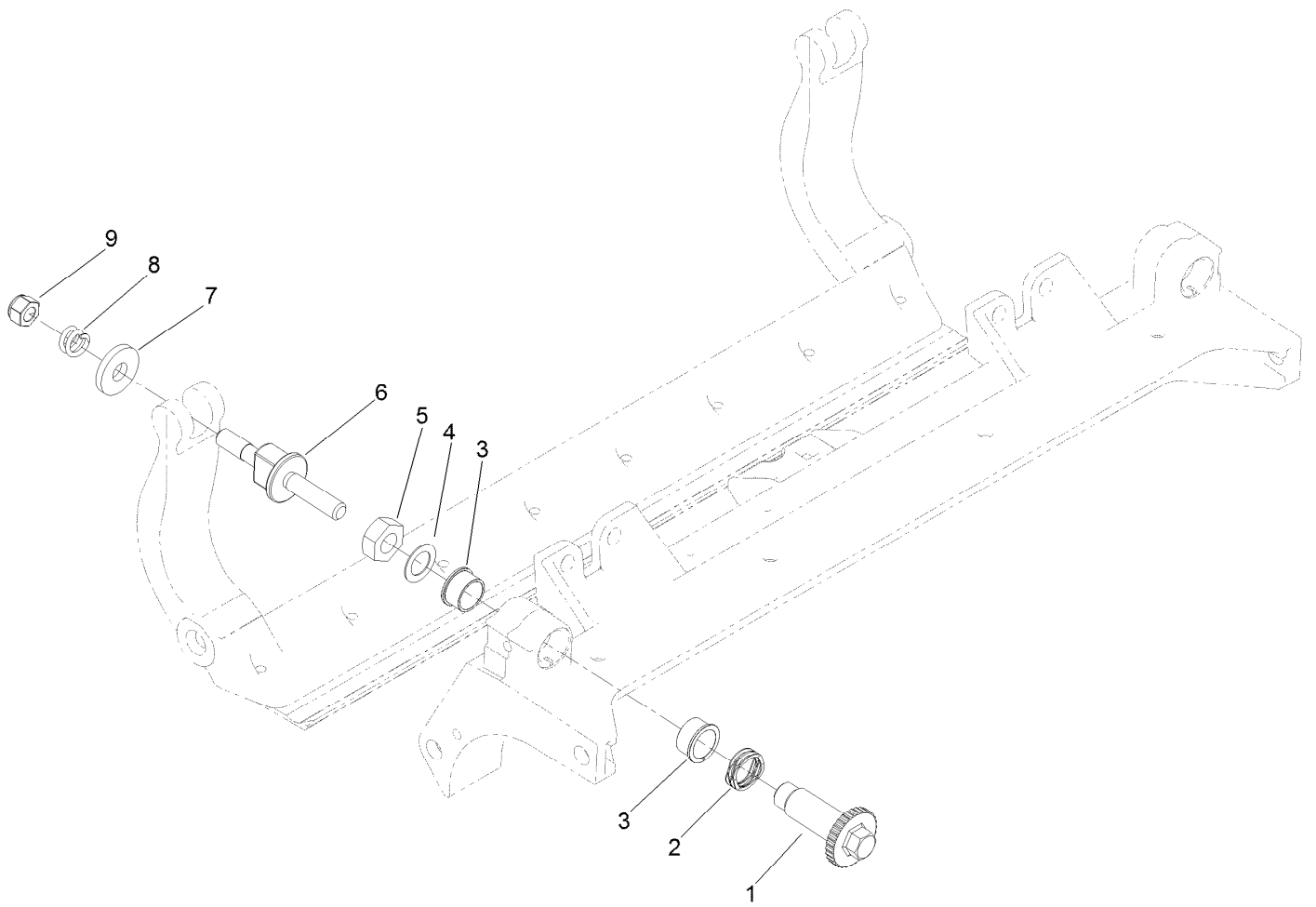


Reel and Bedbar Assembly

Ref.	Part Number	Qty.	Description	Ref.	Part Number	Qty.	Description
1	323-6	2	Screw-HH	20	120-1641	1	Bedknife-Low HOC EXT ■
2	94-2703	1	Plug	21	61-1950	4	Washer-Plastic
3	112-6967	2	O-Ring	22	56-9520	2	Bushing-Flanged
4	120-5118	2	Shaft-Adjuster	23	69-8980	2	Washer
5	106-5344	4	Bushing-Flange, Keyed	24	106-9623	2	Bolt-Bedbar
6	119-4067	2	Screw-HH	25	3296-33	2	Nut-Lock, NI
7	99-2097	2	Detent	26	323-12	2	Screw-HH
8	120-5116	2	Washer-Wave	27	119-0614-01	1	Weight-End
9	108-0015	2	Washer-Flat	28	107-2954	1	Nut-Adjuster, Bearing
10	115-7039	2	Screw-Adjuster, Bedbar	29	93-2489	2	Bearing
11	119-4155	2	Washer-Hardened	30	107-4028	2	Seal-Grease
12	120-5120	2	Spring-Compression	32	115-8278	1	11 Blade Reel
13	119-4039	2	Nut-Hex, NI	32:2	107-3276	1	Insert-Threaded, LH
15	112-8908-01	1	Bedbar	32:3	107-3275	1	Insert-Threaded, RH
16	119-4151	10	Screw-Bedknife	32:4	92-2601	2	Ring-Retaining
17	114-9388	1	Bedknife-STD (Fairway)	36	3296-33	2	Nut-Lock, NI
18	112-8910	1	Bedknife-Edgemax ■	40	120-7230	1	HD DPA Mvp Kit ●■
19	114-9390	1	Bedknife-HD (Fairway) ■				

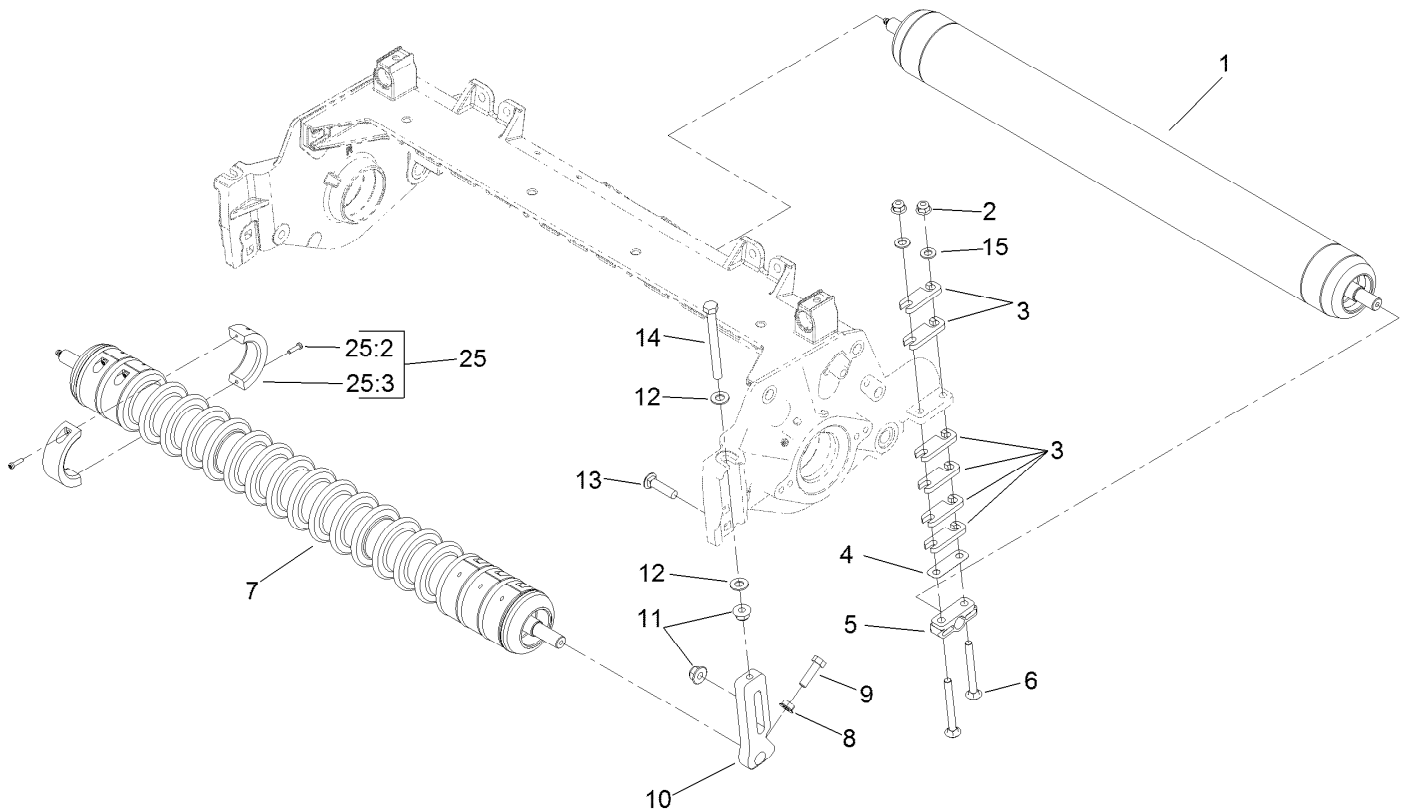
● Not illustrated

■ Optional Equipment



Optional Heavy-Duty MVP Kit No. 120-7230

<i>Ref.</i>	<i>Part Number</i>	<i>Qty.</i>	<i>Description</i>
1	120-5118	2	Shaft-Adjuster
2	120-5116	2	Washer-Wave
3	106-5344	4	Bushing-Flange, Keyed
4	108-0015	2	Washer-Flat
5	3296-33	2	Nut-Lock, NI
6	115-7039	2	Screw-Adjuster, Bedbar
7	119-4155	2	Washer-Hardened
8	120-5120	2	Spring-Compression
9	119-4039	2	Nut-Hex, NI

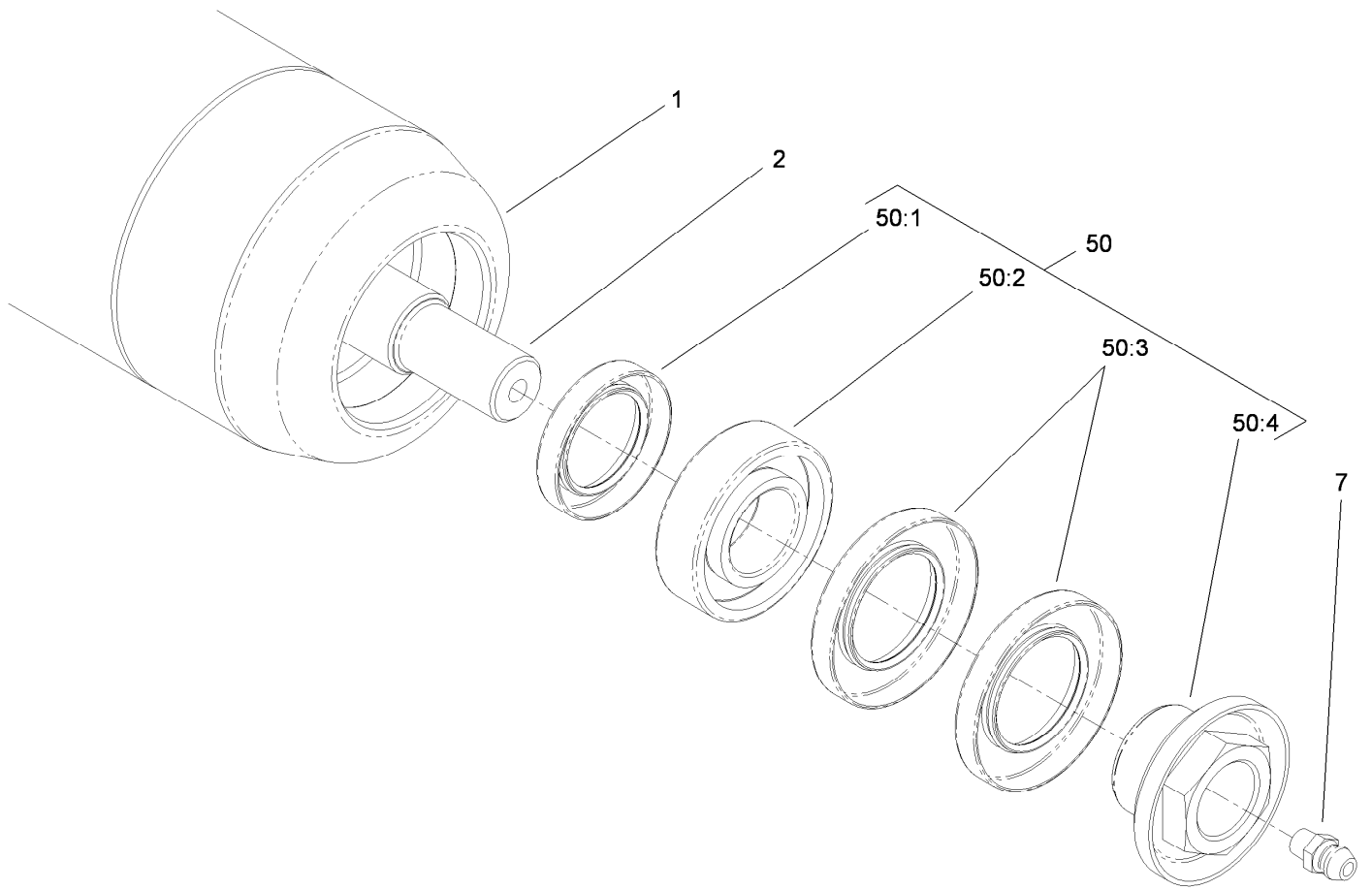


Roller Assembly

Ref.	Part Number	Qty.	Description	Ref.	Part Number	Qty.	Description
1	112-8915	1	Rear Roller ASM (3-Inch Dia)	8	32128-20	2	Nut-HF
1	119-4286	1	Rear Roller ASM (Short)	9	322-16	2	Screw-HH
2	104-8300	4	Nut-Flange, NI	10	125-2796	2	Bracket-Front HOC
3	119-0626	6	Shim-Roller	11	104-8301	4	Nut-Flange, NI
4	107-4001	2	Shim-Roller (0.01) ■	12	48-9220	4	Washer
5	106-3924	2	Bracket-Roller, Rear	13	3231-4	2	Screw-CARR
6	3230-9	4	Screw-CARR	14	107-4026	2	Screw-HH
7	114-9383	1	Full Front Roller ASM (3-Inch Dia) ● ■	15	94-6936	4	Washer-Hardened
7	117-0960	1	Plastic Wiehle Roller ASM	25	119-0649	6	Trim/HD Collar Kit ■
7	119-0630	1	Plastic Shoulder Roller ASM ● ■	25:2	119-1604	2	Collar-Trim/HD
				25:3	104-1835	2	Screw
				50	110-9600	1	DPA High HOC Kit ● ■

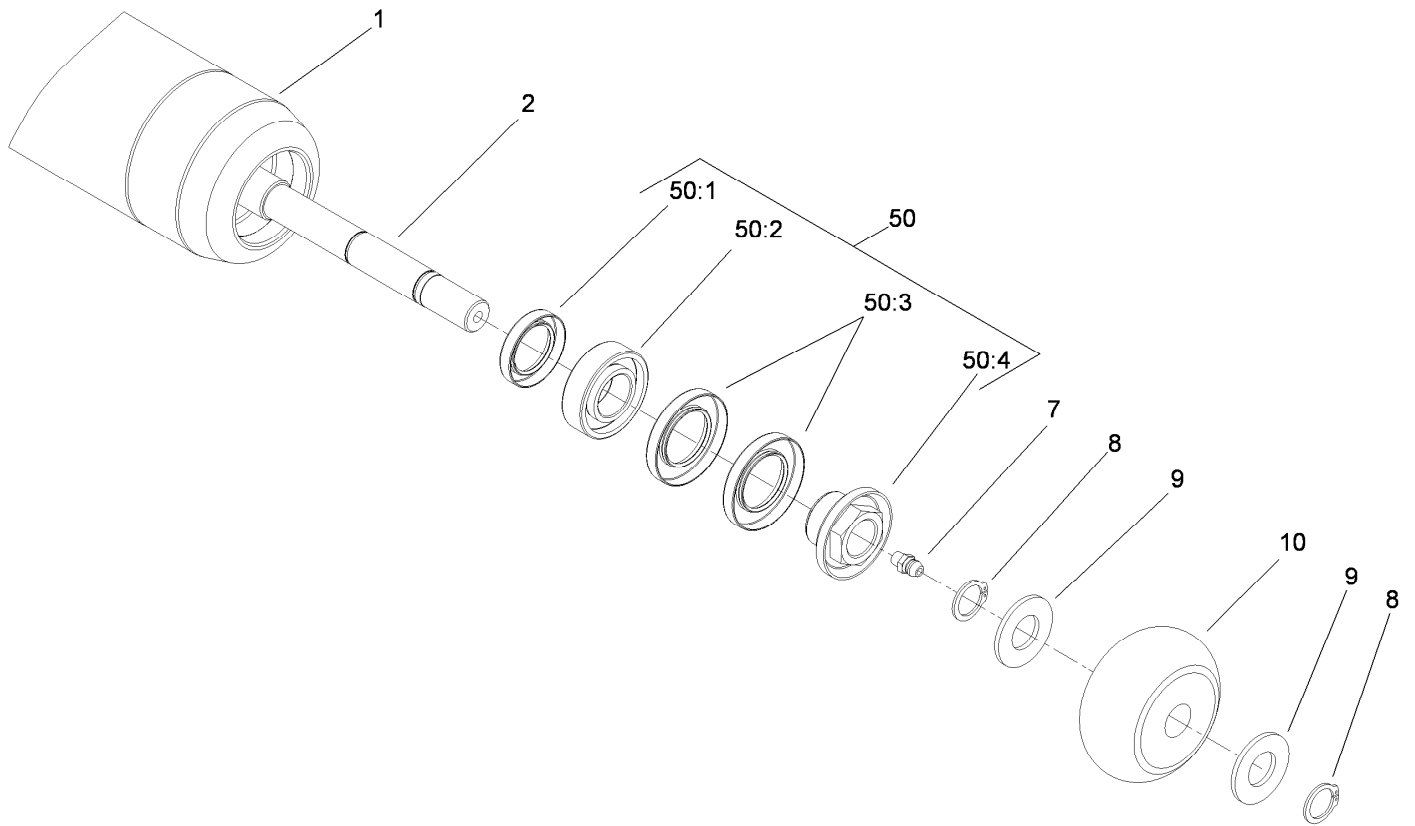
● Not illustrated

■ Optional Equipment



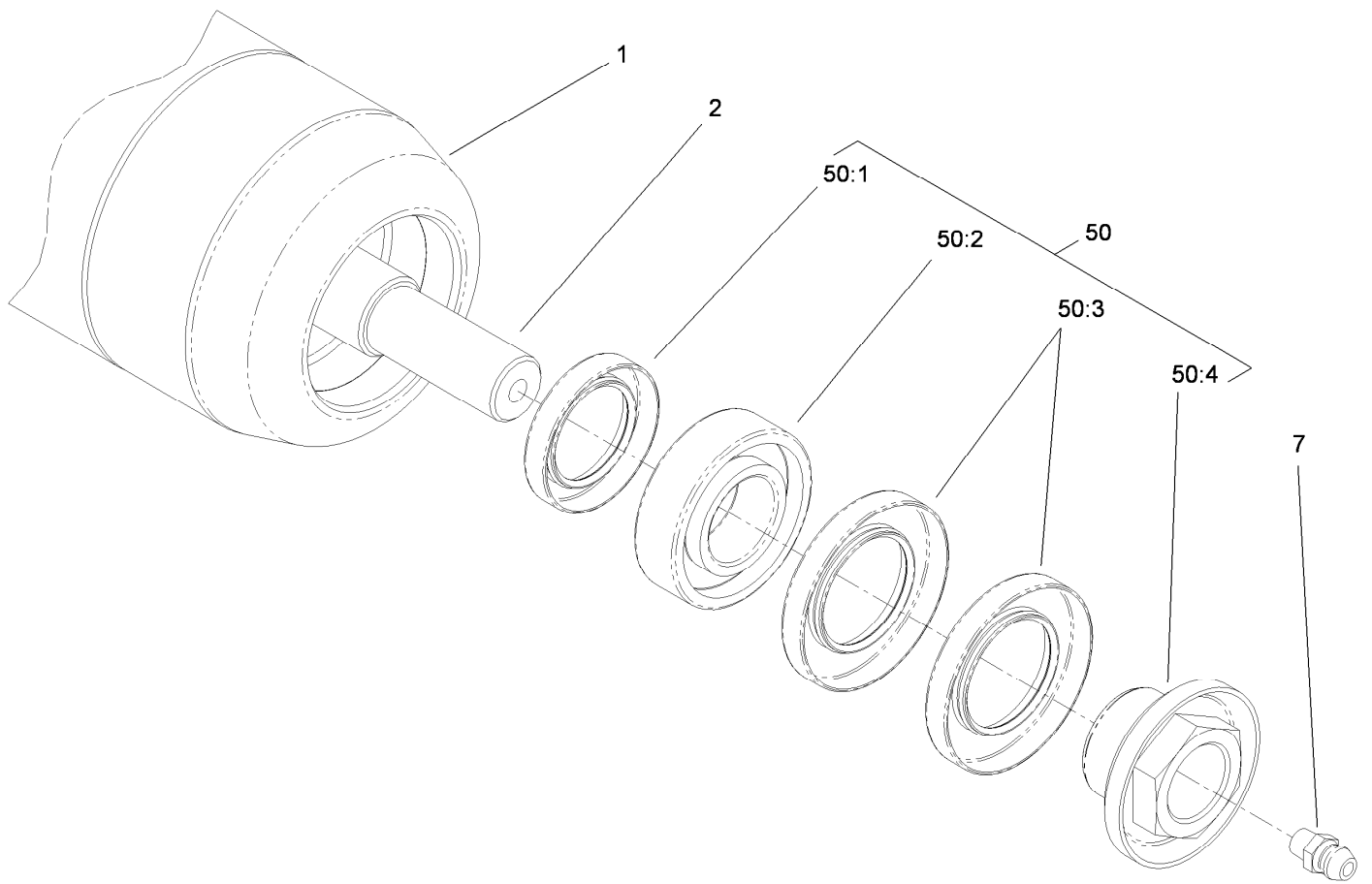
Long Roller Assembly No. 112-8915

<i>Ref.</i>	<i>Part Number</i>	<i>Qty.</i>	<i>Description</i>
1	112-8916-03	1	Long Roller Tube ASM
2	112-8918	1	Shaft-Long, Rear Roller
7	302-5	2	Fitting-Grease
50	114-5430	1	Roller Rebuild Kit
50:1	114-3717	2	Seal-Oil
50:2	112-5290	2	Bearing-Steel, Stainless
50:3	112-7494	4	Seal
50:4	114-5411	2	Nut-Lock, Bearing



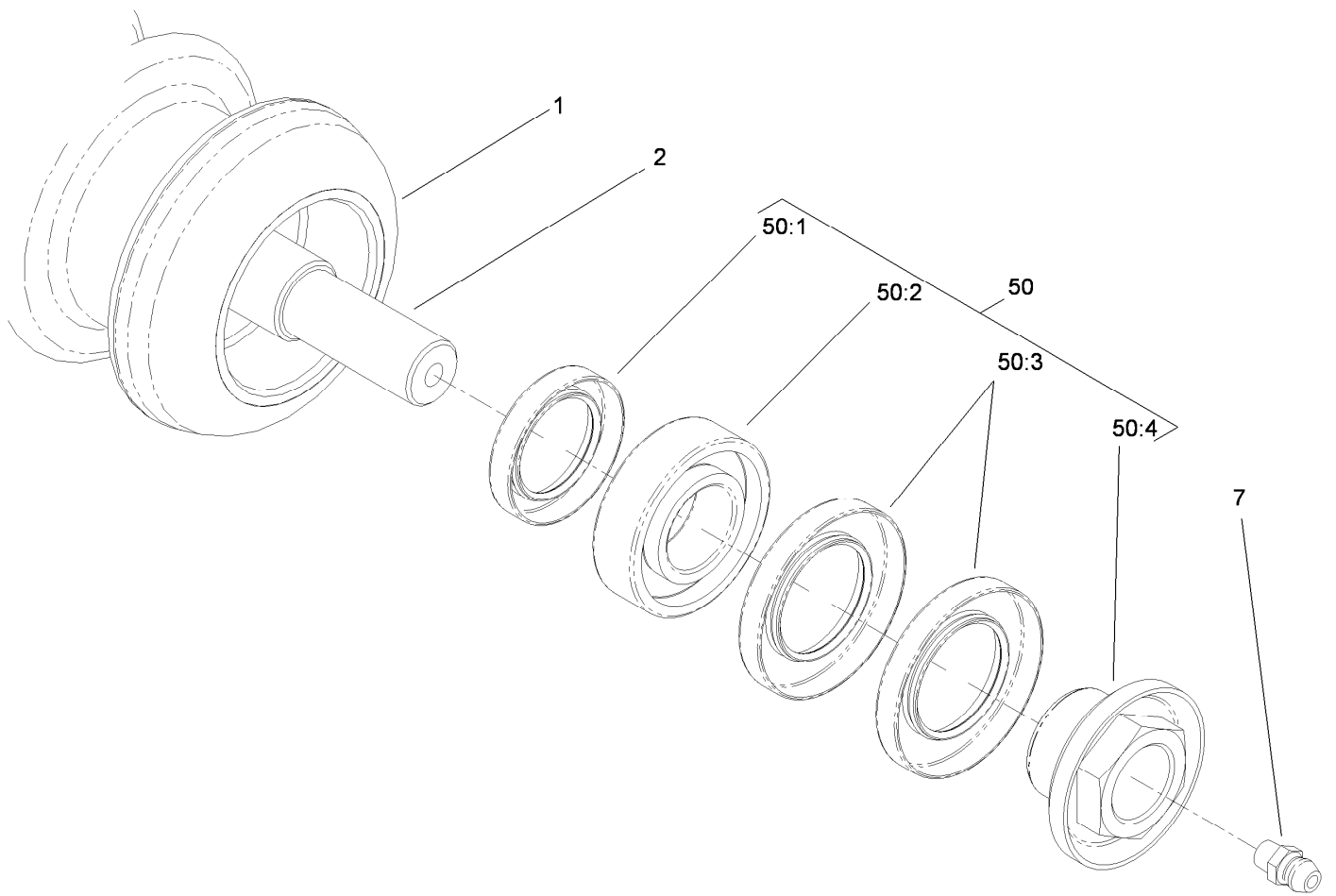
Optional Short Roller Assembly No. 119-4286

<i>Ref.</i>	<i>Part Number</i>	<i>Qty.</i>	<i>Description</i>
1	115-8296-03	1	Tube-Roller (Short)
2	119-4287	1	Shaft-Rear Roller, 27 Inch
7	302-5	2	Fitting-Grease
8	32151-62	4	Ring-Retaining
9	119-1868	4	Washer
10	119-4276	2	Roller-Tipper
50	114-5430	1	Roller Rebuild Kit
50:1	114-3717	2	Seal-Oil
50:2	112-5290	2	Bearing-Steel, Stainless
50:3	112-7494	4	Seal
50:4	114-5411	2	Nut-Lock, Bearing



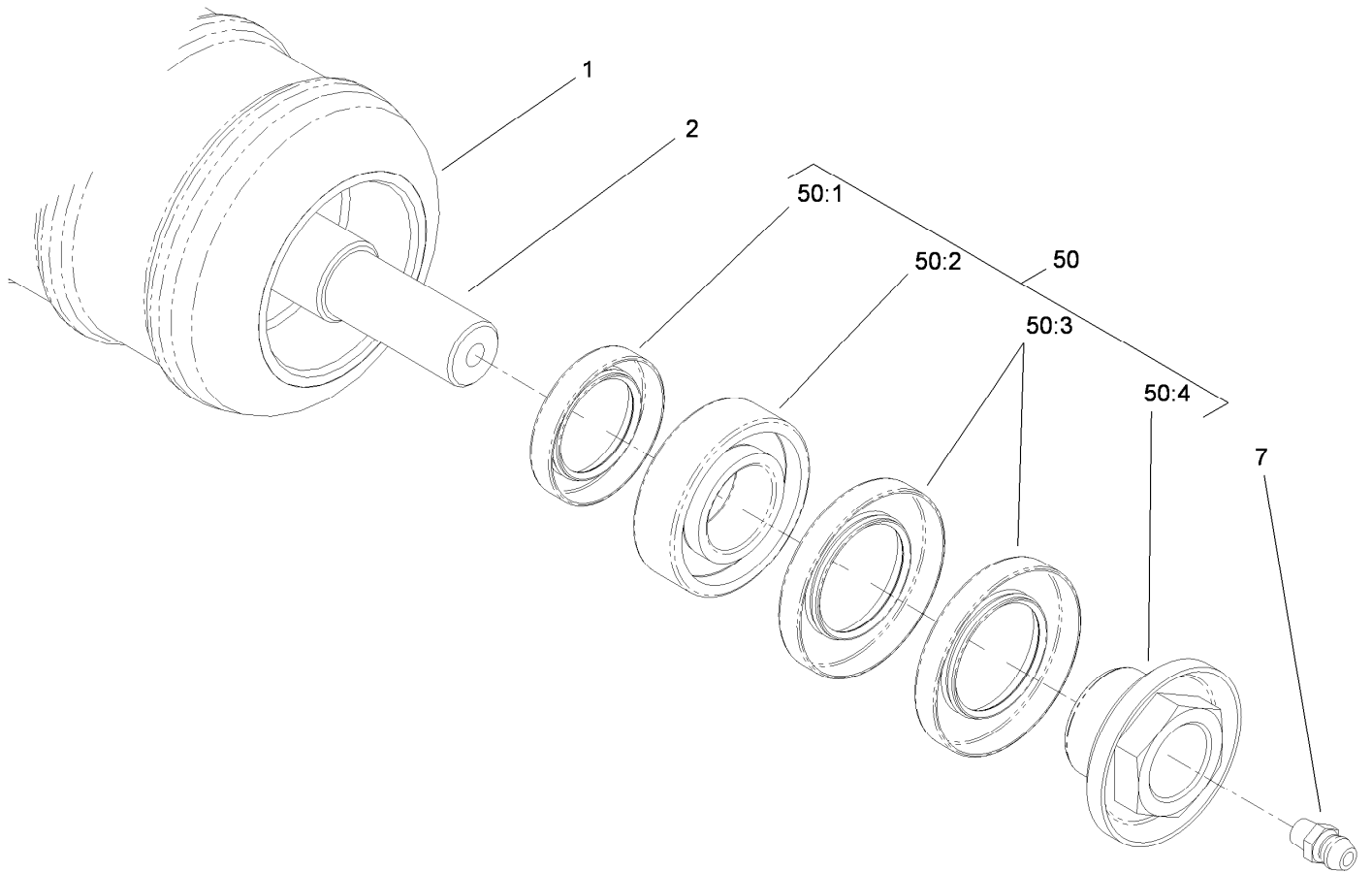
Optional Full Front Roller Assembly No. 114-9383

<i>Ref.</i>	<i>Part Number</i>	<i>Qty.</i>	<i>Description</i>
1	112-8916-03	1	Long Roller Tube ASM
2	117-0957	1	Shaft-Roller, Wiehle
7	302-5	2	Fitting-Grease
50	114-5430	1	Roller Rebuild Kit
50:1	114-3717	2	Seal-Oil
50:2	112-5290	2	Bearing-Steel, Stainless
50:3	112-7494	4	Seal
50:4	114-5411	2	Nut-Lock, Bearing



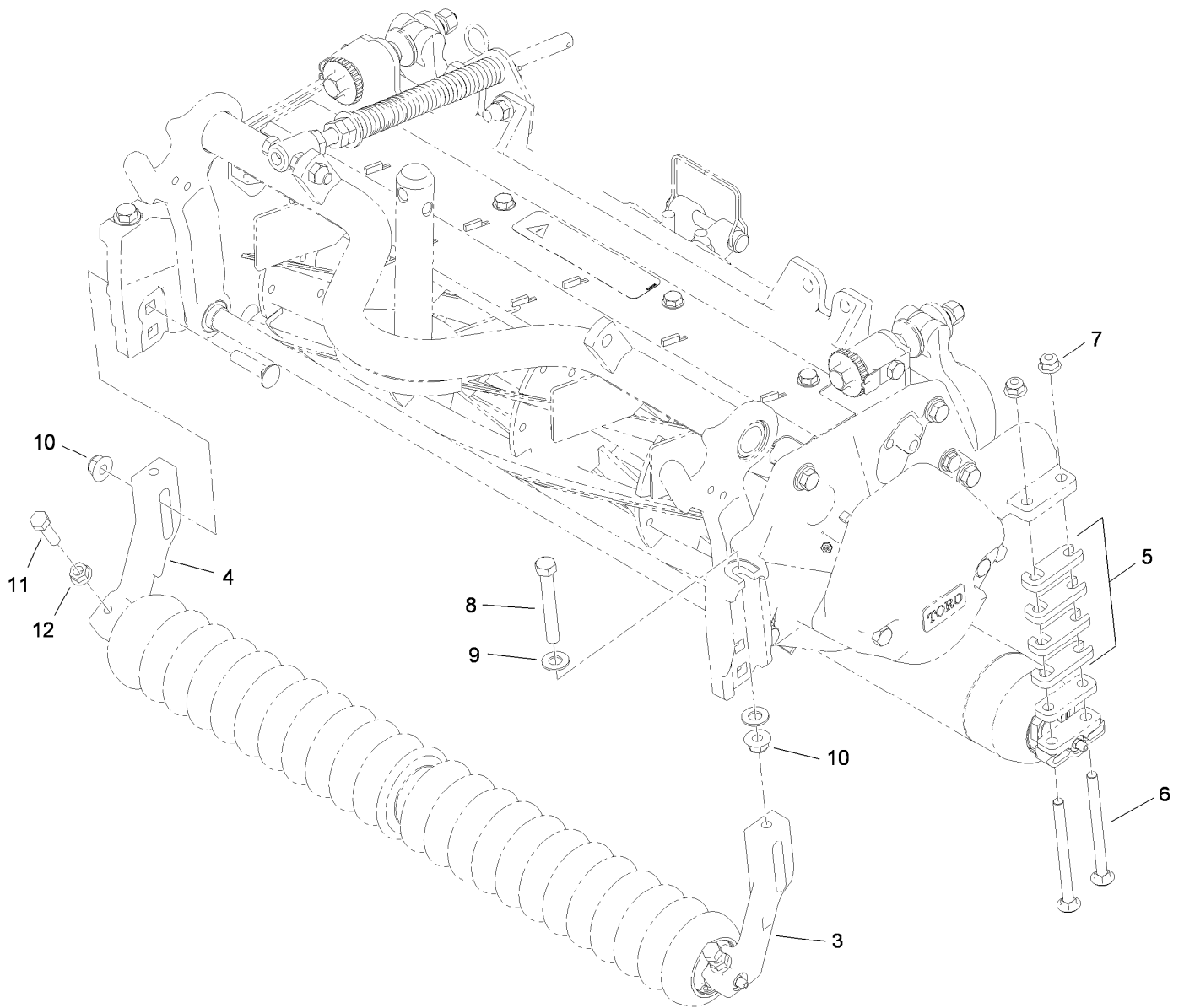
Wiehle Roller Assembly No. 117-0960

<i>Ref.</i>	<i>Part Number</i>	<i>Qty.</i>	<i>Description</i>
1	117-0959	1	Roller-Wiehle, Plastic
2	117-0957	1	Shaft-Roller, Wiehle
7	302-5	2	Fitting-Grease
50	114-5430	1	Roller Rebuild Kit
50:1	114-3717	2	Seal-Oil
50:2	112-5290	2	Bearing-Steel, Stainless
50:3	112-7494	4	Seal
50:4	114-5411	2	Nut-Lock, Bearing



Optional Shoulder Roller Assembly No. 119-0630

<i>Ref.</i>	<i>Part Number</i>	<i>Qty.</i>	<i>Description</i>
1	119-0631	1	Roller-Shoulder, Plastic
2	117-0957	1	Shaft-Roller, Wiehle
7	302-5	2	Fitting-Grease
50	114-5430	1	Roller Rebuild Kit
50:1	114-3717	2	Seal-Oil
50:2	112-5290	2	Bearing-Steel, Stainless
50:3	112-7494	4	Seal
50:4	114-5411	2	Nut-Lock, Bearing

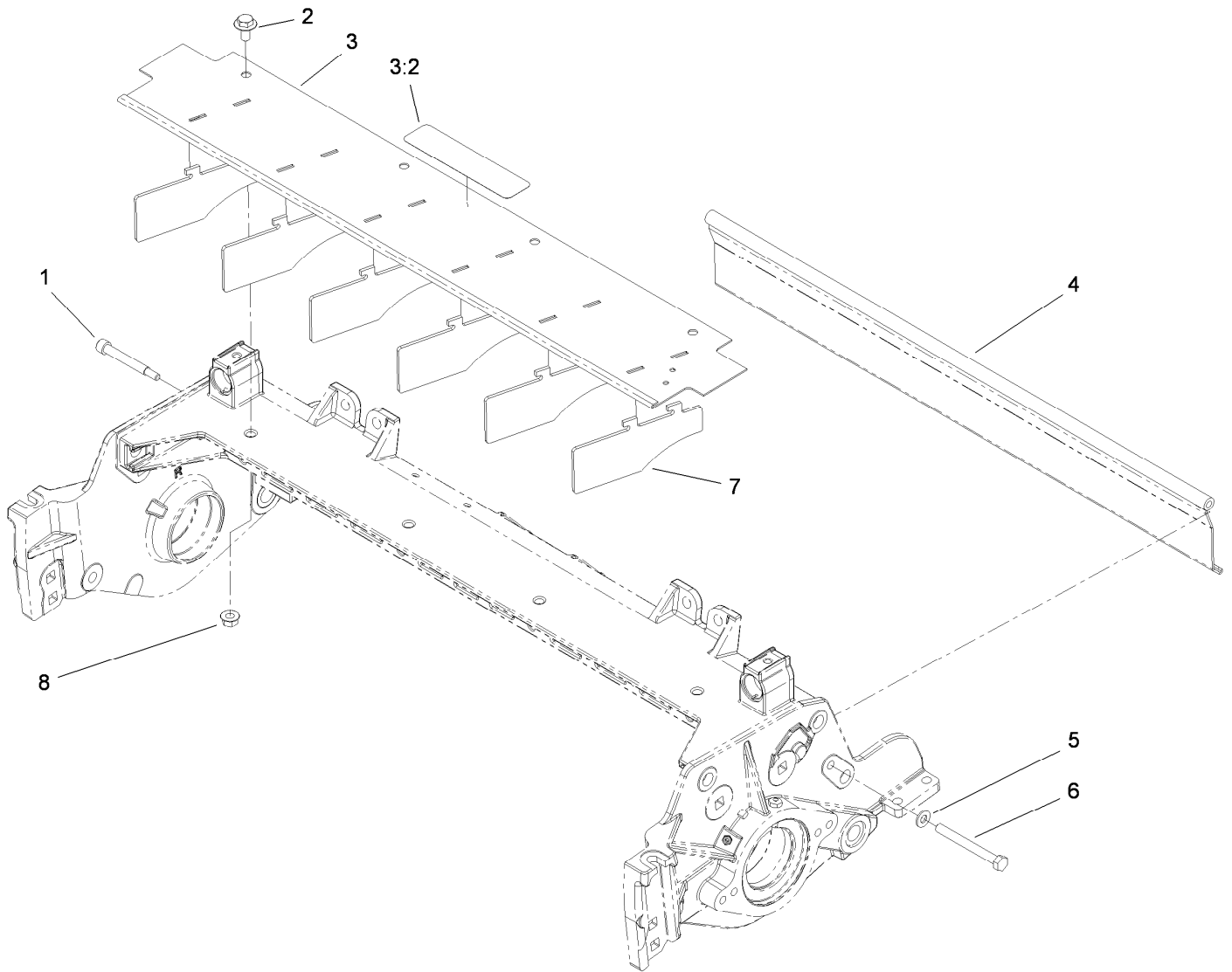


Optional High Height-of-Cut Assembly No. 110-9600

Ref.	Part Number	Qty.	Description
3	120-0404	1	Bracket-High HOC, LH
4	120-0405	1	Bracket-High HOC, RH
5	119-0626	8	Shim-Roller
6	106-9758	4	Screw-CARR
6	3230-30	4	Screw-CARR ● ■
7	104-8300	4	Nut-Flange, NI
8	112-7451	2	Screw-TAP
9	48-9220	4	Washer
10	104-8301	4	Nut-Flange, NI
11	322-16	2	Screw-HH
12	32128-20	2	Nut-HF

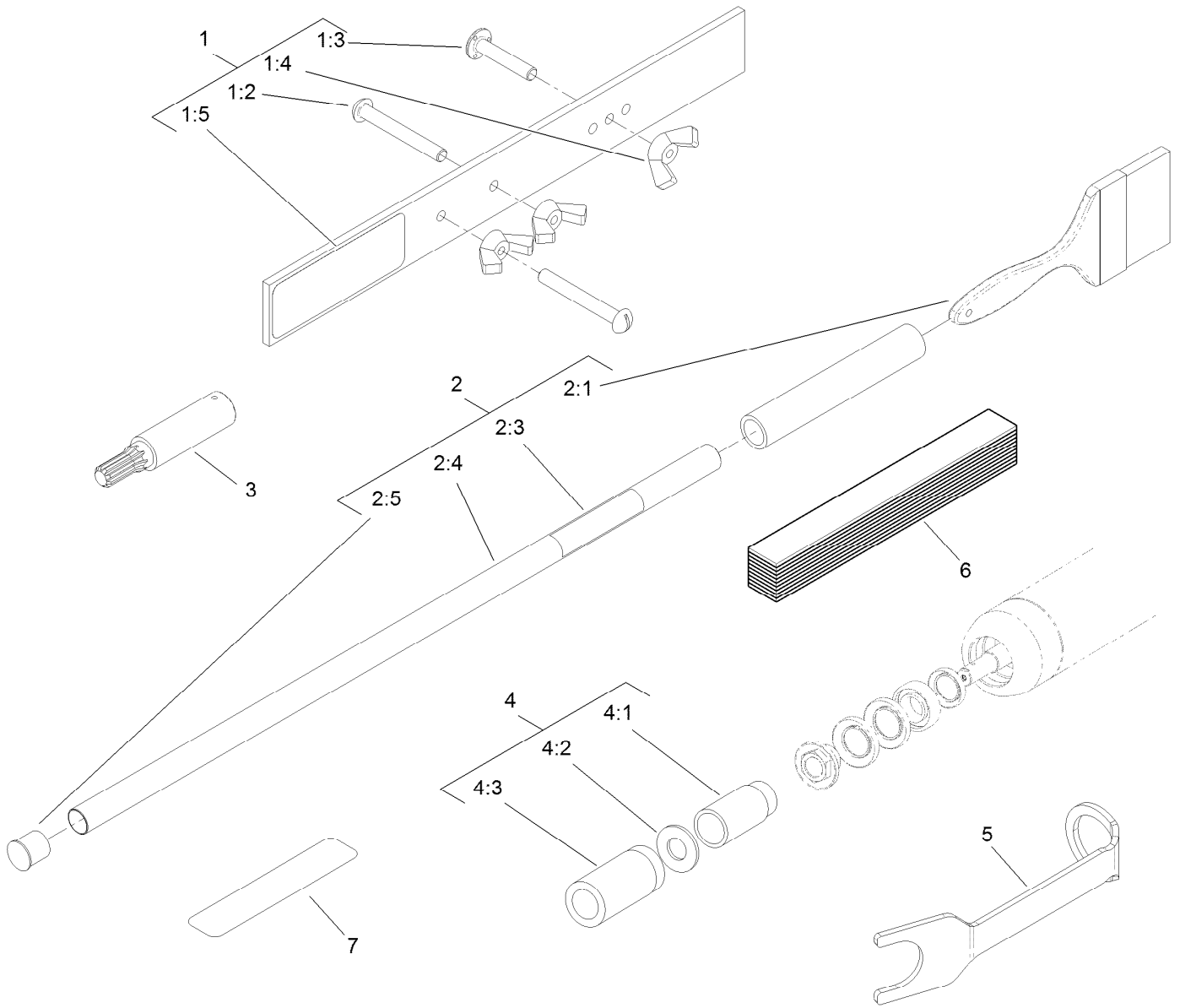
● Not illustrated

■ Optional Equipment



Shield Assembly

<i>Ref.</i>	<i>Part Number</i>	<i>Qty.</i>	<i>Description</i>
1	107-7773	1	Screw-HSH
2	3234-7	4	Screw-HHF
3	112-8942	1	Front Grass Shield ASM
3:2	93-6688	1	Decal-Danger
4	112-8944-01	1	Rear Grass Shield ASM
5	3256-74	1	Washer-Flat
6	322-14	1	Screw-HH
7	110-1706	6	Deflector
8	32128-20	4	Nut-HF



Optional Tool Assembly

<i>Ref.</i>	<i>Part Number</i>	<i>Qty.</i>	<i>Description</i>	<i>Ref.</i>	<i>Part Number</i>	<i>Qty.</i>	<i>Description</i>
1	108-6715	1	Gauge Bar ASM	3	TOR4074	1	Adapter-Drive, Reel ●
1:2	32122-54	2	Screw-Head, Truss	4	115-0803	1	Roller Rebuild Tool Kit
1:3	108-6714	1	Stud-Weld	4:1	115-0852	1	Tool-Inner Seal
1:4	32103-3	3	Nut-Wing	4:2	107-8133	1	Washer-Flat
1:5	108-6712	1	Decal-Gauge, Bar	4:3	115-0853	1	Tool-Bearing/Outer Seals
2	29-9100	1	Brush And Handle ASM	5	117-0975	1	Tool-Installation, Reel Bearing
2:1	36-4310	1	Brush	6	125-5610	1	Paper-Reel, Toro (10 Pack)
2:3	98-3206	1	Decal	7	125-5611	1	Shim-Toro Reel (0.002 Inch)
2:4	29-9080	1	Handle				
2:5	2410-18	1	Cap-Plastic				

● Obtain directly from K-Line Industries, Inc. (800) 241-0936

Attachments and Accessories

For 03711 27-inch 11-Blade Cutting Unit Reelmaster 7000-D Traction Unit

Product Name	Model/Part
27in Rear Roller Brush Kit	03186
Left-Hand Groomer Kit.....	03713
Right-Hand Groomer Kit	03714
27in Heavy-Duty Verticutter	03716
Turf Evaluator	04399
Gauge Bar Assembly	108-6715
Fairway Broomer Kit	110-4085
Groomer/RRB Bearing and Seal Kit.....	110-4086
High Height-of-Cut Kit.....	110-9600
27in Bedknife-Edgemax	112-8910
Roller Rebuild Kit	114-5430
Rear Roller Scraper Kit.....	114-9368
Wiehle Scraper ASM	114-9372-03
Comb/Scraper Kit	114-9376
Shoulder Scraper ASM.....	114-9381-03
Full Front Roller ASM (3in dia).....	114-9383
Full Front Roller Scraper ASM (3in dia).....	114-9386-03
Bedknife-std (fairway).....	114-9388
Bedknife-HD	114-9390
Roller Rebuild Tool Kit.....	115-0803
Brush-Roller (High HOC)	115-0838
5-Blade Reel Asm.....	115-8270
Reel Bearing Installation Tool	117-0975
Plastic Shoulder Roller ASM.....	119-0630
Trim/Heavy-Duty Collar Kit	119-0649
Rear Roller ASM (short).....	119-4286
Cutting Unit Kickstand	119-8010-03
Low HOC Extended Bedknife	120-1641
Heavy-Duty DPA MVP Kit.....	120-7230
Rear Roller Adjustment Kit.....	125-0570
Toro Reel Paper (10 Pack).....	125-5610
Toro Reel Shim (0.002in)	125-5611
Brush and Handle Kit.....	29-9100
Reel Drive Adapter	TOR4074

Notes:

Notes:

Notes:



Count on it.