



Count on it.

Parts Catalog

**8-Blade 27-inch DPA Cutting Unit
Reelmaster® 3100-D Series Traction Unit**

Model No. 03181—Serial No. 312000001 and Up



Ordering Replacement Parts

To order replacement parts, please supply the part number, the quantity, and the description of each part desired.

Understanding Reference Numbers

Each identified part in an illustration has a reference number. The reference number for a part also appears in the parts list, along with other information about the part.

This catalog uses two special reference number formats, one to indicate parts in a service assembly and another to indicate the quantity of a given part in an illustration.

Service Assembly Reference Numbers

Parts in service assemblies have reference numbers in the form a:b. The a represents the reference number of the entire service assembly and the b represents a sequential number unique to each part within the service assembly.

For example, a wheel assembly might be identified by reference number 6, the tire by 6:1, the valve by 6:2, and the wheel by 6:3. When you order the assembly identified by reference number 6, you receive all parts identified by reference numbers 6:1, 6:2, and 6:3. However, you may also order any part individually. Reference numbers of this type appear in illustration and in parts lists.

Reference Numbers Indicating Quantity

In an illustration, if a reference number indicates more than one part, the reference number has the form nX y. The n represents the quantity of the part, the X is the multiplication symbol, and the y represents the reference number.

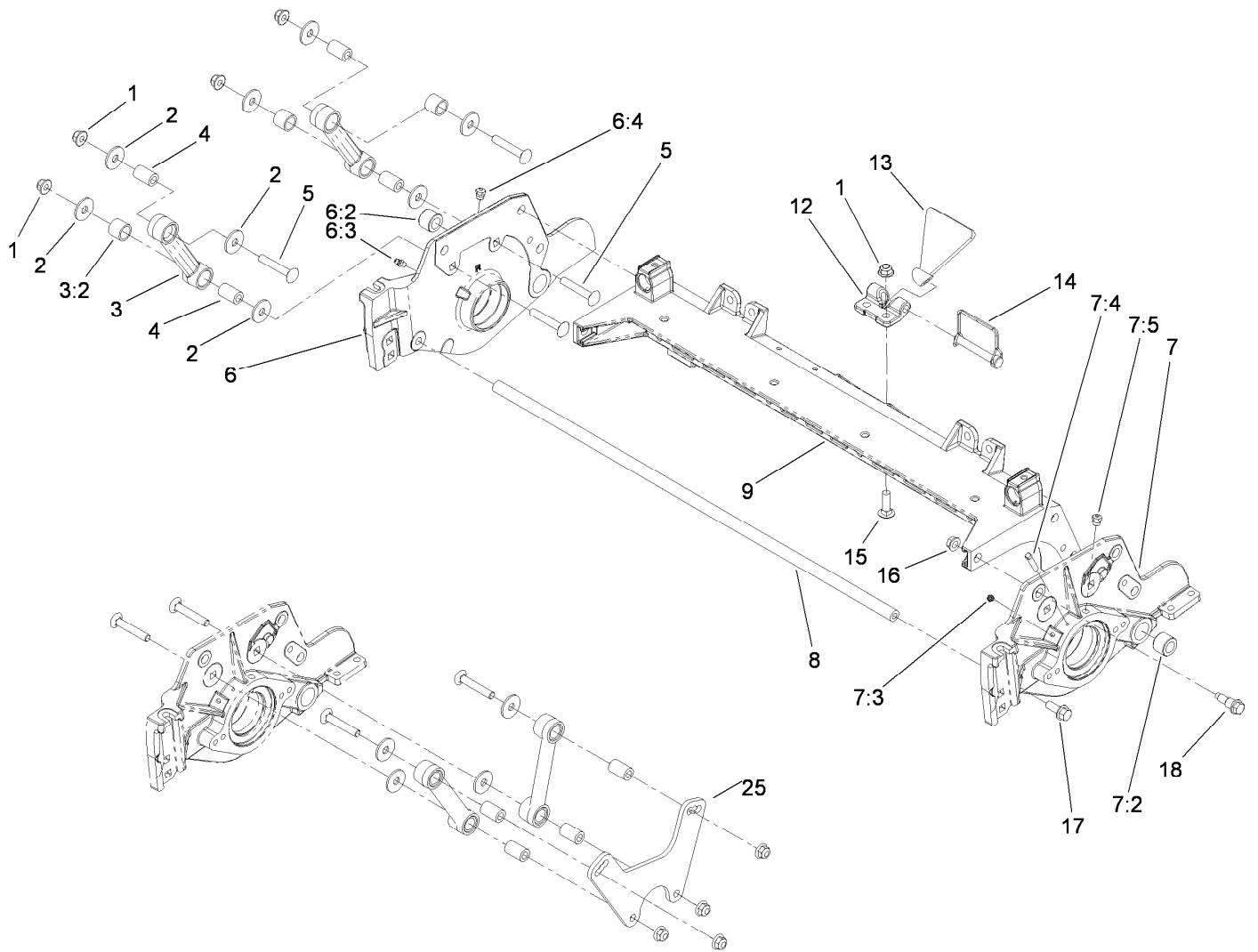
For example, in an illustration, the reference number 2X 37 means that two of the parts identified by reference number 37 are indicated.

List of Abbreviations

AR: as required	HLH: hex lag head	PTO: power-take-off
ASM: assembly	HOC: height-of-cut	RH: right hand
BBC: blade brake control	HSBH: hex socket button head	ROPS: roll-over protection system
BHTF: button head thread forming	HSFH: hex socket flat head	RRB: rear roller brush
CARR: carriage	HSH: hex socket head	SFH: slotted fillister head
CCW: counter clockwise	HWH: hex washer head	SHH: slotted hex head
CW: clockwise	HWHTF: hex washer head thread forming	SHWH: slotted hex washer head
DEG: degrees	HYD: hydraulic	SPH: slotted pan head
DPA: Dual Point Adjustment	LH: left hand	SQH: square head
ECM: electronic control module	LP: Liquefied Petroleum Gas	SRH: slotted round head
EXT: external	LPG: Liquefied Petroleum Gas	STD: standard
FH: flat head	NI: nylon insert	TAP: self tapping
GA: gauge	NPTF: national pipe thread fine	TTH: torx truss head
HD: heavy-duty	PFH: phillips flat head	
HF: hex flange	PPH: phillips pan head	
HH: hex head	PPHTF: phillips pan head thread forming	
HHF: hex head flange	PRH: phillips round head	
HHFTF: hex head flange thread forming	PTH: phillips truss head	
HJ: hex jam		

Contents

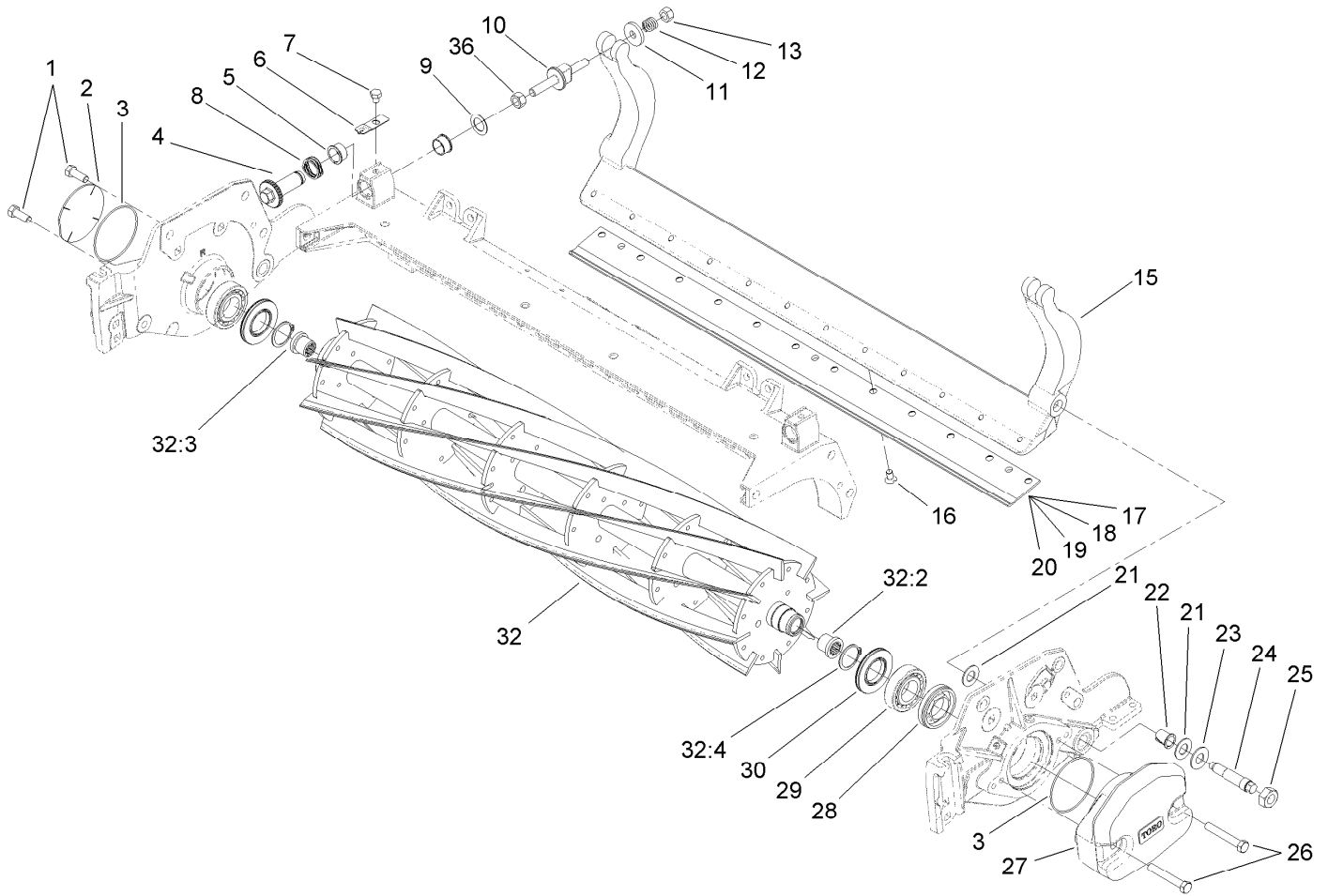
Frame Assembly.....	4
Reel and Bedbar Assembly	5
Optional Heavy-Duty MVP Kit No. 120-7230.....	6
Front and Rear Roller Assembly	7
Long Roller Assembly No. 112-8915.....	8
Optional Full Front Roller Assembly No. 114-9383.....	9
Wiehle Roller Assembly No. 117-0960.....	10
Optional Shoulder Roller Assembly No. 119-0630	11
Shield Assembly.....	12
Optional Tool Assembly.....	13
Attachments and Accessories	14



Frame Assembly

Ref.	Part Number	Qty.	Description	Ref.	Part Number	Qty.	Description
1	104-8301	10	Nut-Flange, NI	7:4	107-7447	1	Screw-Set, SQH
2	93-8806	16	Washer-Hardened	7:5	302-39	1	Fitting-Plug
3	16-9759	4	Link ASM	8	112-8936	1	Tube-Support
3:2	94-8945	2	Bushing	9	112-8935	1	Frame-Center
4	93-6981	8	Spacer	12	110-4058	1	Bracket-Chain
5	3231-40	8	Bolt-CARR, Short Neck	13	119-8010-03	1	Kickstand ●
6	115-4263	1	Plate-Side, RH	14	107-7400	1	Pin-Snapper ●
6:2	106-9618	1	Bushing-Rubber	15	3231-25	2	Bolt-CARR
6:3	302-5	1	Fitting-Grease	16	3290-357	6	Nut-HHF, Whiz
6:4	302-39	1	Fitting-Plug	17	3234-11	2	Screw-HHF
7	115-4260	1	Plate-Side, LH	18	107-2979	6	Bolt-Shoulder
7:2	106-9618	1	Bushing-Rubber	25	119-0646-03	2	Plate-Fixed (High HOC) ●
7:3	302-5	1	Fitting-Grease				

● Optional Equipment

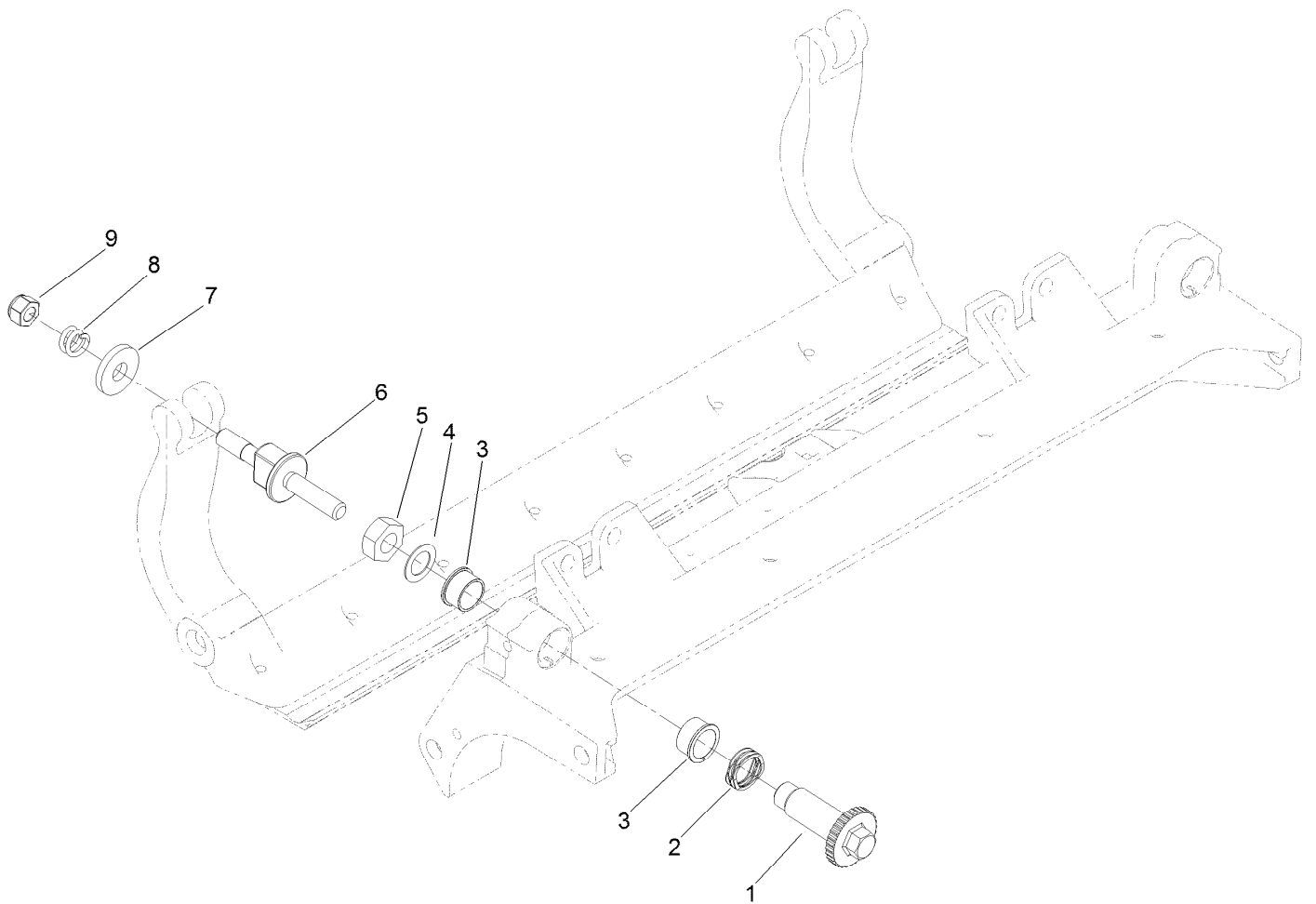


Reel and Bedbar Assembly

Ref.	Part Number	Qty.	Description	Ref.	Part Number	Qty.	Description
1	323-6	2	Screw-HH	20	120-1641	1	Bedknife-Low HOC EXT ■
2	94-2703	1	Plug	21	61-1950	4	Washer-Plastic
3	112-6967	2	O-Ring	22	56-9520	2	Bushing-Flanged
4	120-5118	2	Shaft-Adjuster	23	69-8980	2	Washer
5	106-5344	4	Bushing-Flange, Keyed	24	106-9623	2	Bolt-Bedbar
6	99-2097	2	Detent	25	3296-33	2	Nut-Lock, NI
7	114-9396	2	Capscrew-HH	26	323-12	2	Screw-HH
8	120-5116	2	Washer-Wave	27	119-0614-01	1	Weight-End
9	108-0015	2	Washer-Flat	28	107-2954	1	Nut-Adjuster, Bearing
10	115-7039	2	Screw-Adjuster, Bedbar	29	93-2489	2	Bearing
11	119-4155	2	Washer-Hardened	30	107-4028	2	Seal-Grease
12	120-5120	2	Spring-Compression	32	115-8275	1	8 Blade Reel ASM
13	119-4039	2	Nut-Hex, NI	32:2	107-3276	1	Insert-Threaded, LH
15	112-8908-01	1	Bedbar	32:3	107-3275	1	Insert-Threaded, RH
16	119-4151	10	Screw-Bedknife	32:4	92-2601	2	Ring-Retaining
17	114-9388	1	Bedknife-STD (Fairway)	36	3296-33	2	Nut-Lock, NI
18	112-8910	1	Bedknife-Edgemax ■	40	120-7230	1	HD DPA Mvp Kit ●
19	114-9390	1	Bedknife-HD (Fairway) ■				

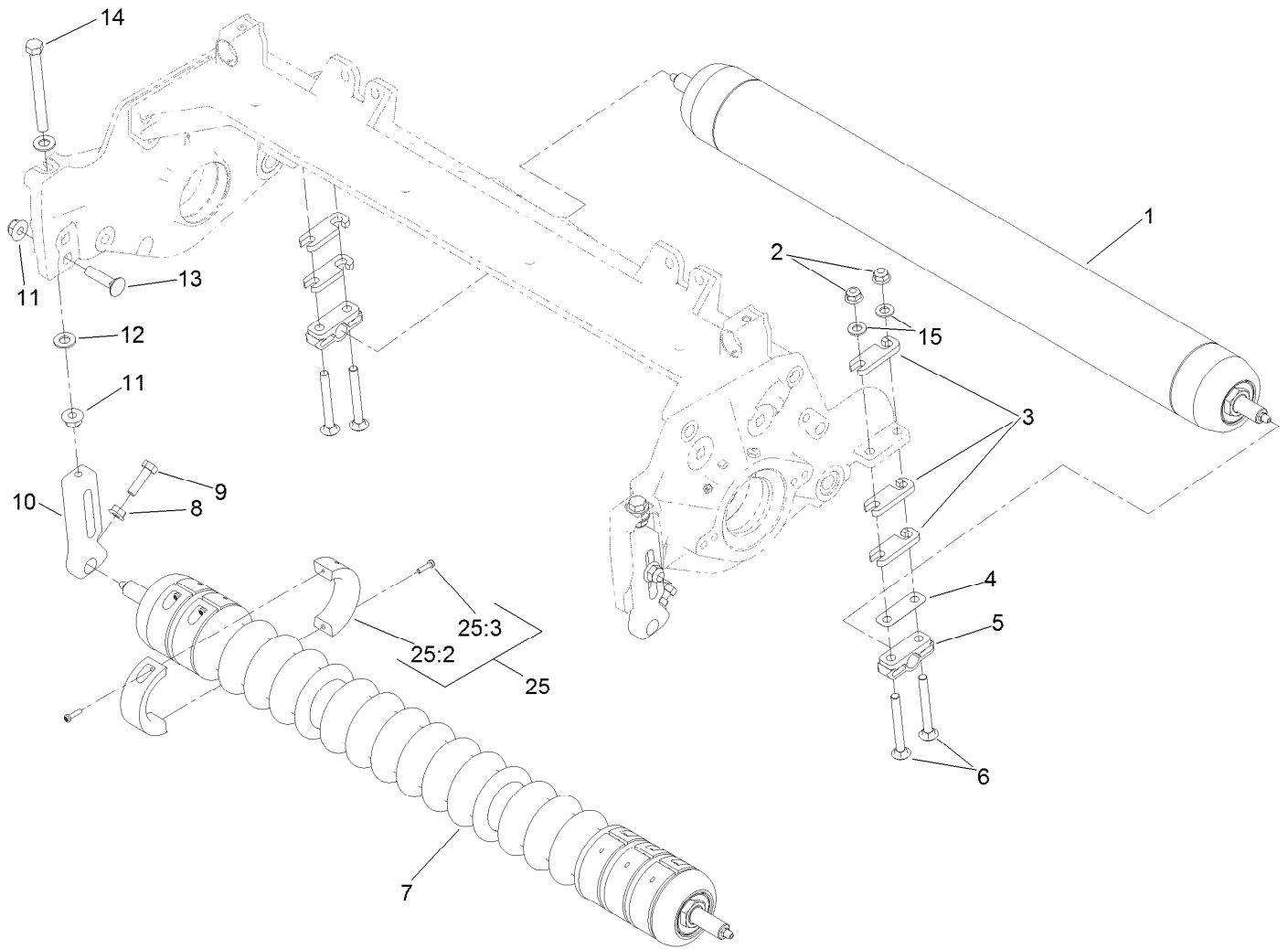
● Not illustrated

■ Optional Equipment



Optional Heavy-Duty MVP Kit No. 120-7230

<i>Ref.</i>	<i>Part Number</i>	<i>Qty.</i>	<i>Description</i>
1	120-5118	2	Shaft-Adjuster
2	120-5116	2	Washer-Wave
3	106-5344	4	Bushing-Flange, Keyed
4	108-0015	2	Washer-Flat
5	3296-33	2	Nut-Lock, NI
6	115-7039	2	Screw-Adjuster, Bedbar
7	119-4155	2	Washer-Hardened
8	120-5120	2	Spring-Compression
9	119-4039	2	Nut-Hex, NI

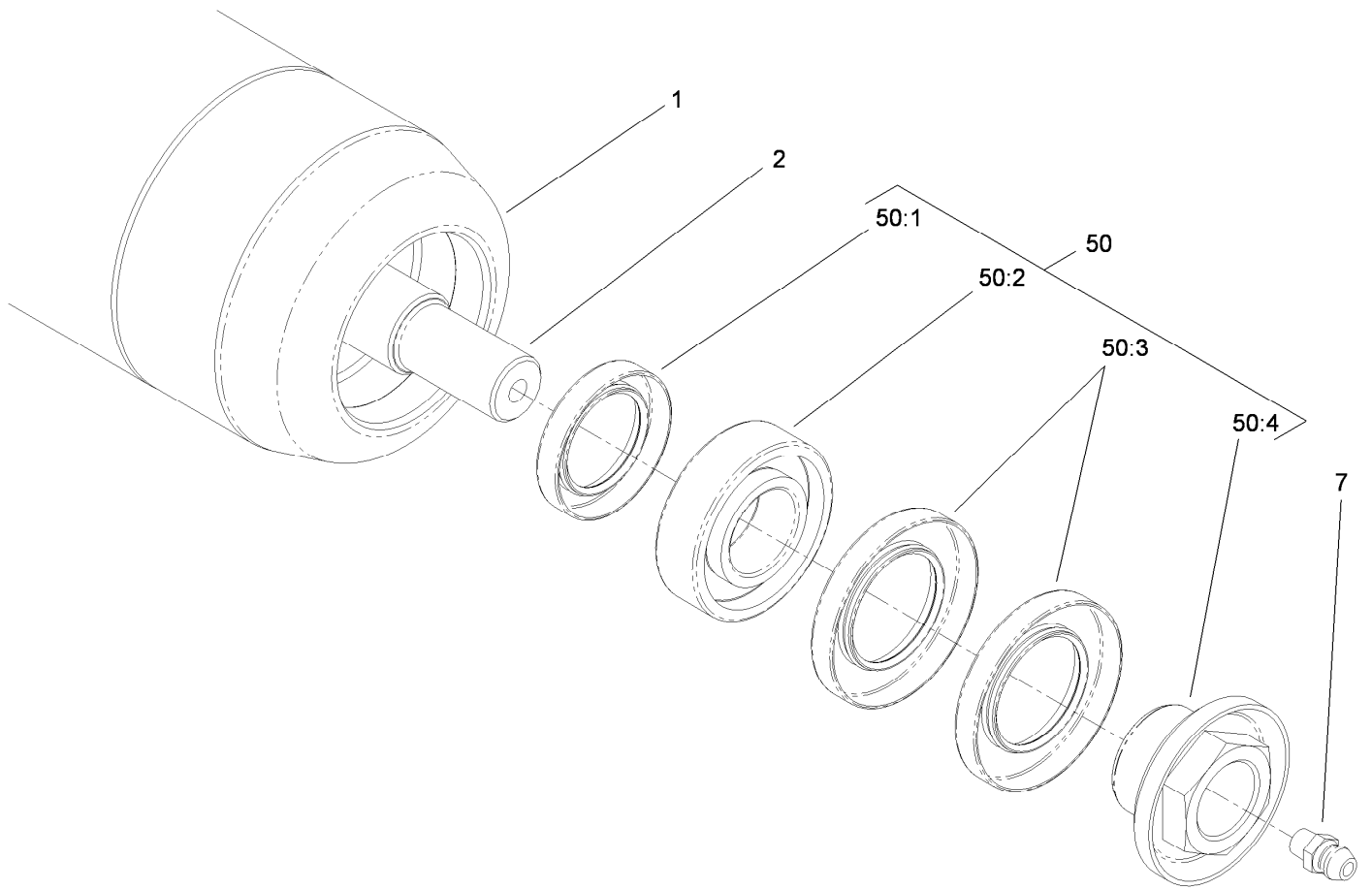


Front and Rear Roller Assembly

Ref.	Part Number	Qty.	Description	Ref.	Part Number	Qty.	Description
1	112-8915	1	Rear Roller ASM (3-Inch Dia)	8	32128-20	2	Nut-HF
2	104-8300	4	Nut-Flange, NI	9	322-16	2	Screw-HH
3	119-0626	12	Shim-Roller	10	120-0404	1	Bracket-High HOC, LH
4	107-4001	2	Shim-Roller (0.01) ■	10	120-0405	1	Bracket-High HOC, RH
5	106-3924	2	Bracket-Roller, Rear	11	104-8301	4	Nut-Flange, NI
6	3230-26	4	Screw-CARR	12	48-9220	4	Washer
7	114-9383	1	Full Front Roller ASM (3-Inch Dia) ● ■	13	3231-4	2	Screw-CARR
7	117-0960	1	Plastic Wiehle Roller ASM	14	107-4026	2	Screw-HH
7	119-0630	1	Plastic Shoulder Roller ASM ● ■	15	94-6936	4	Washer-Hardened
				25	119-0649	6	Trim/HD Collar Kit
				25:2	119-1604	2	Collar-Trim/HD
				25:3	104-1835	2	Screw

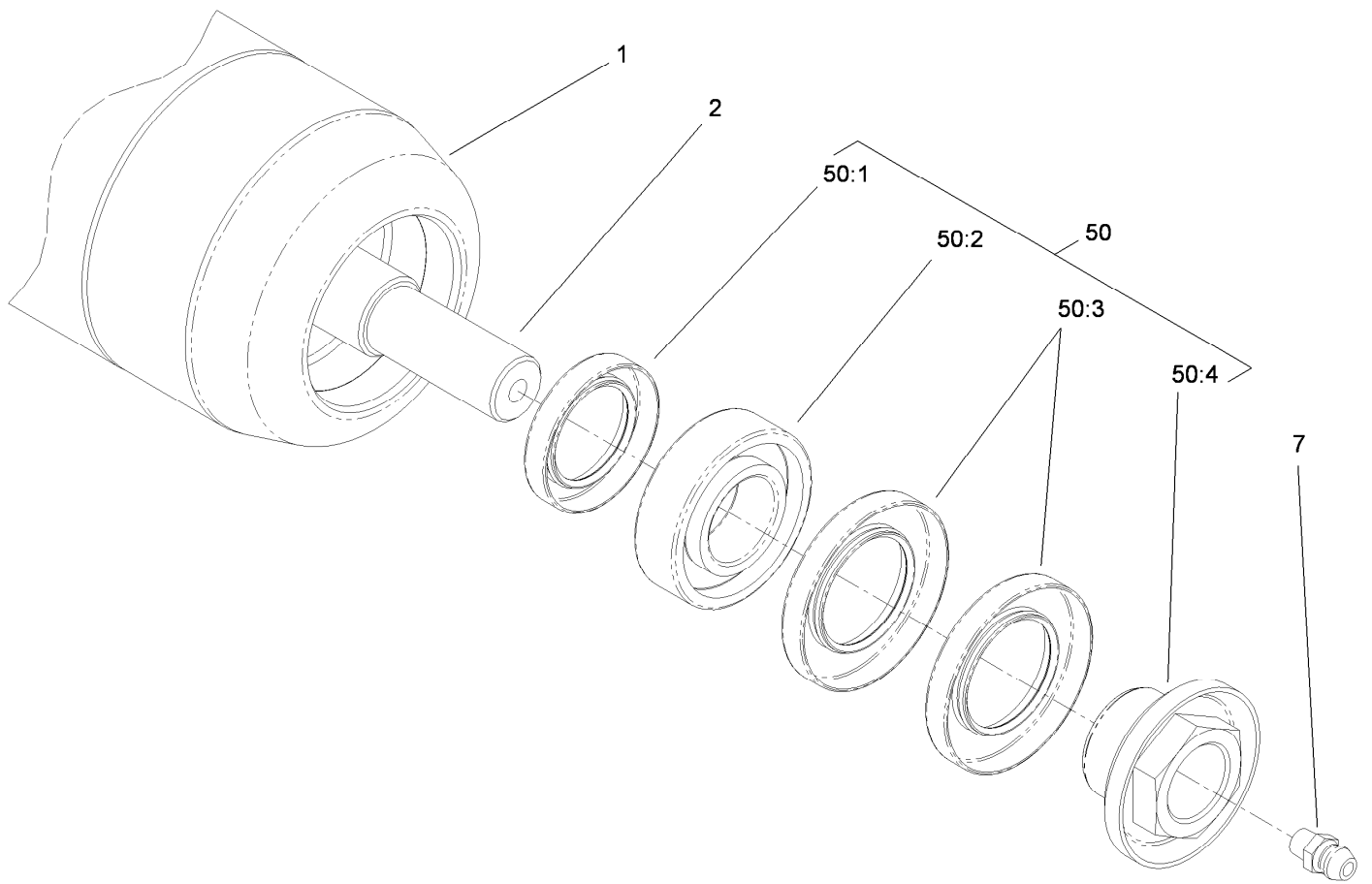
● Not illustrated

■ Optional Equipment



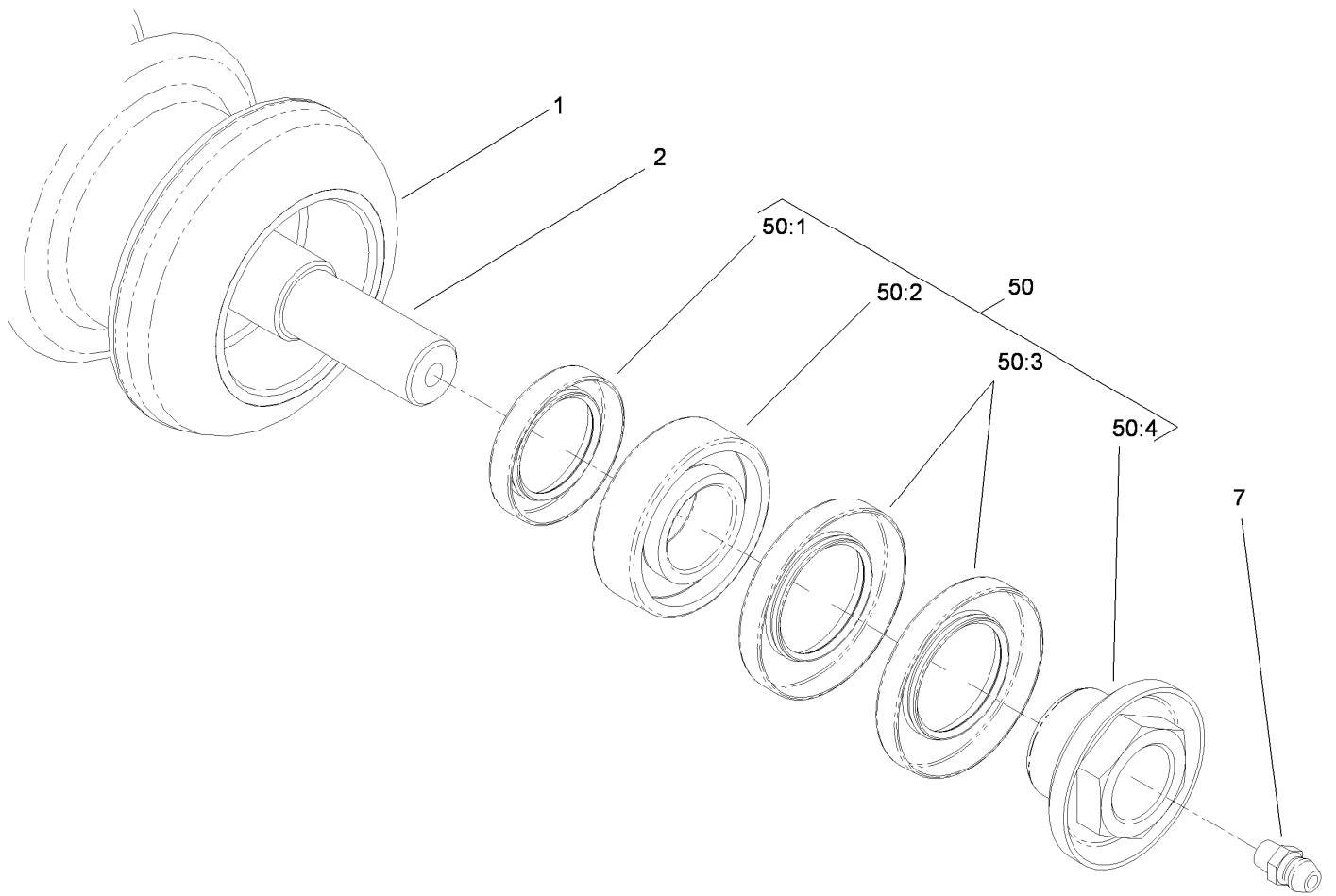
Long Roller Assembly No. 112-8915

<i>Ref.</i>	<i>Part Number</i>	<i>Qty.</i>	<i>Description</i>
1	112-8916-03	1	Long Roller Tube ASM
2	112-8918	1	Shaft-Long, Rear Roller
7	302-5	2	Fitting-Grease
50	114-5430	1	Roller Rebuild Kit
50:1	114-3717	2	Seal-Oil
50:2	112-5290	2	Bearing-Steel, Stainless
50:3	112-7494	4	Seal
50:4	114-5411	2	Nut-Lock, Bearing



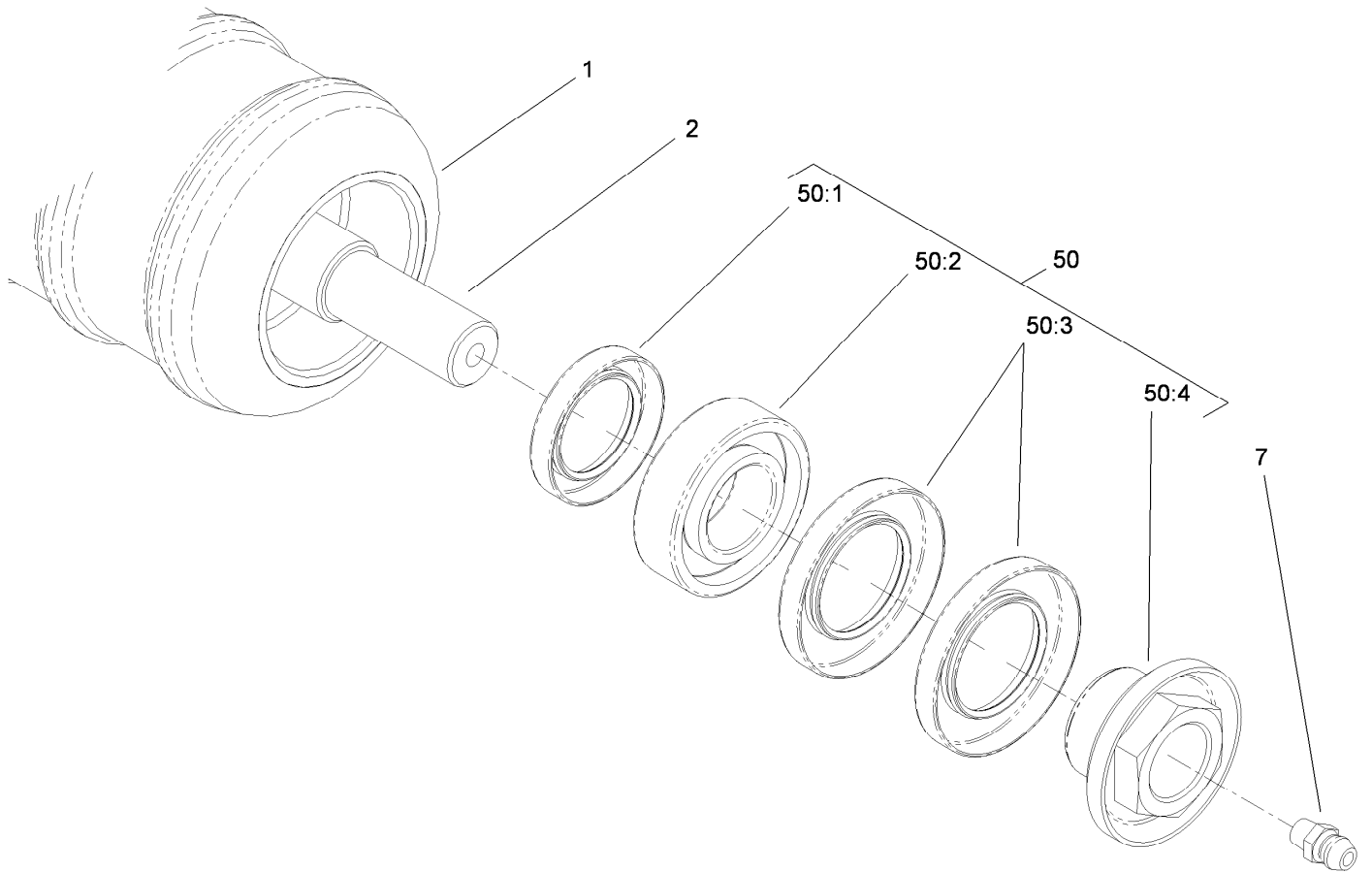
Optional Full Front Roller Assembly No. 114-9383

<i>Ref.</i>	<i>Part Number</i>	<i>Qty.</i>	<i>Description</i>
1	112-8916-03	1	Long Roller Tube ASM
2	117-0957	1	Shaft-Roller, Wiehle
7	302-5	2	Fitting-Grease
50	114-5430	1	Roller Rebuild Kit
50:1	114-3717	2	Seal-Oil
50:2	112-5290	2	Bearing-Steel, Stainless
50:3	112-7494	4	Seal
50:4	114-5411	2	Nut-Lock, Bearing



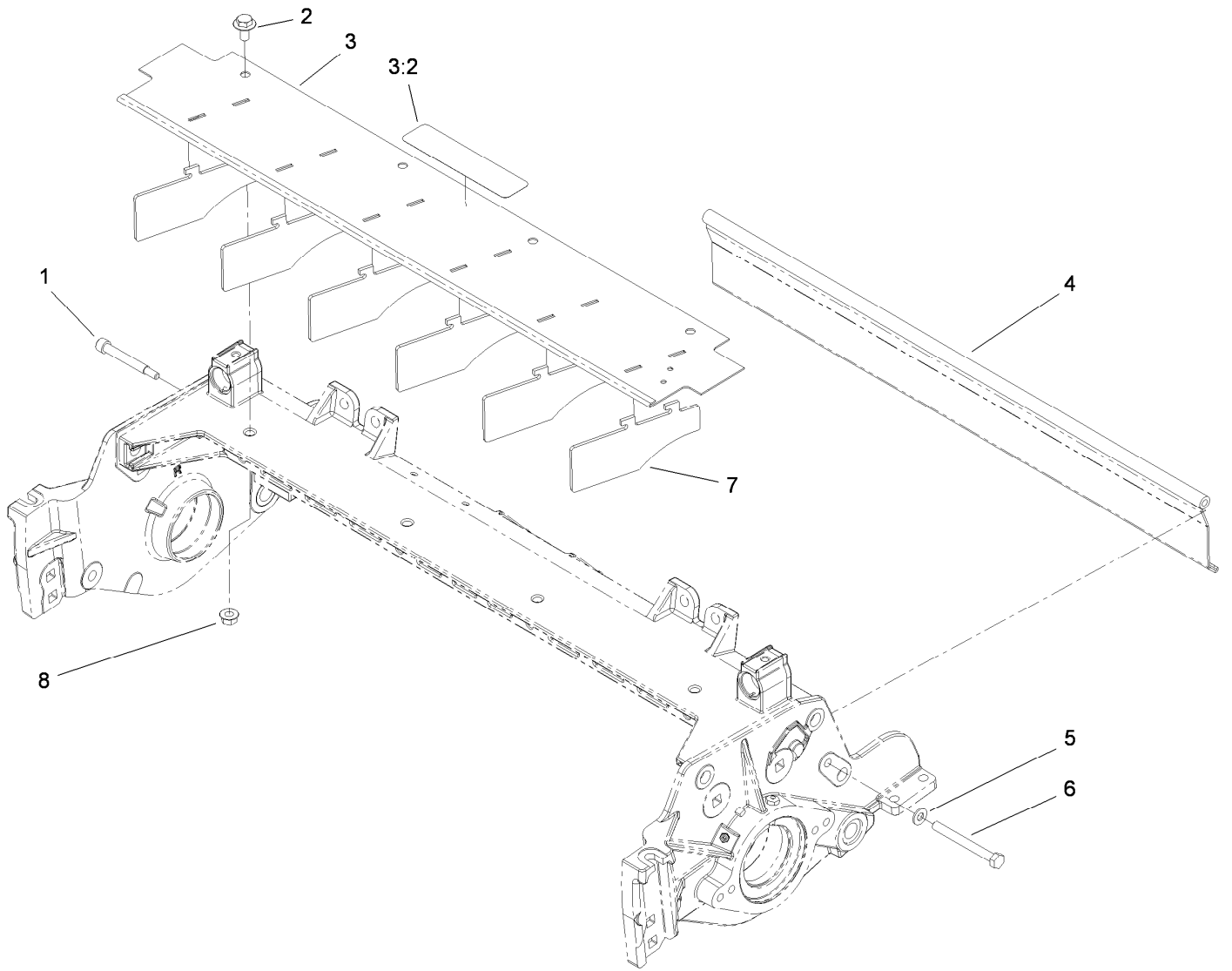
Wiehle Roller Assembly No. 117-0960

<i>Ref.</i>	<i>Part Number</i>	<i>Qty.</i>	<i>Description</i>
1	117-0959	1	Roller-Wiehle, Plastic
2	117-0957	1	Shaft-Roller, Wiehle
7	302-5	2	Fitting-Grease
50	114-5430	1	Roller Rebuild Kit
50:1	114-3717	2	Seal-Oil
50:2	112-5290	2	Bearing-Steel, Stainless
50:3	112-7494	4	Seal
50:4	114-5411	2	Nut-Lock, Bearing



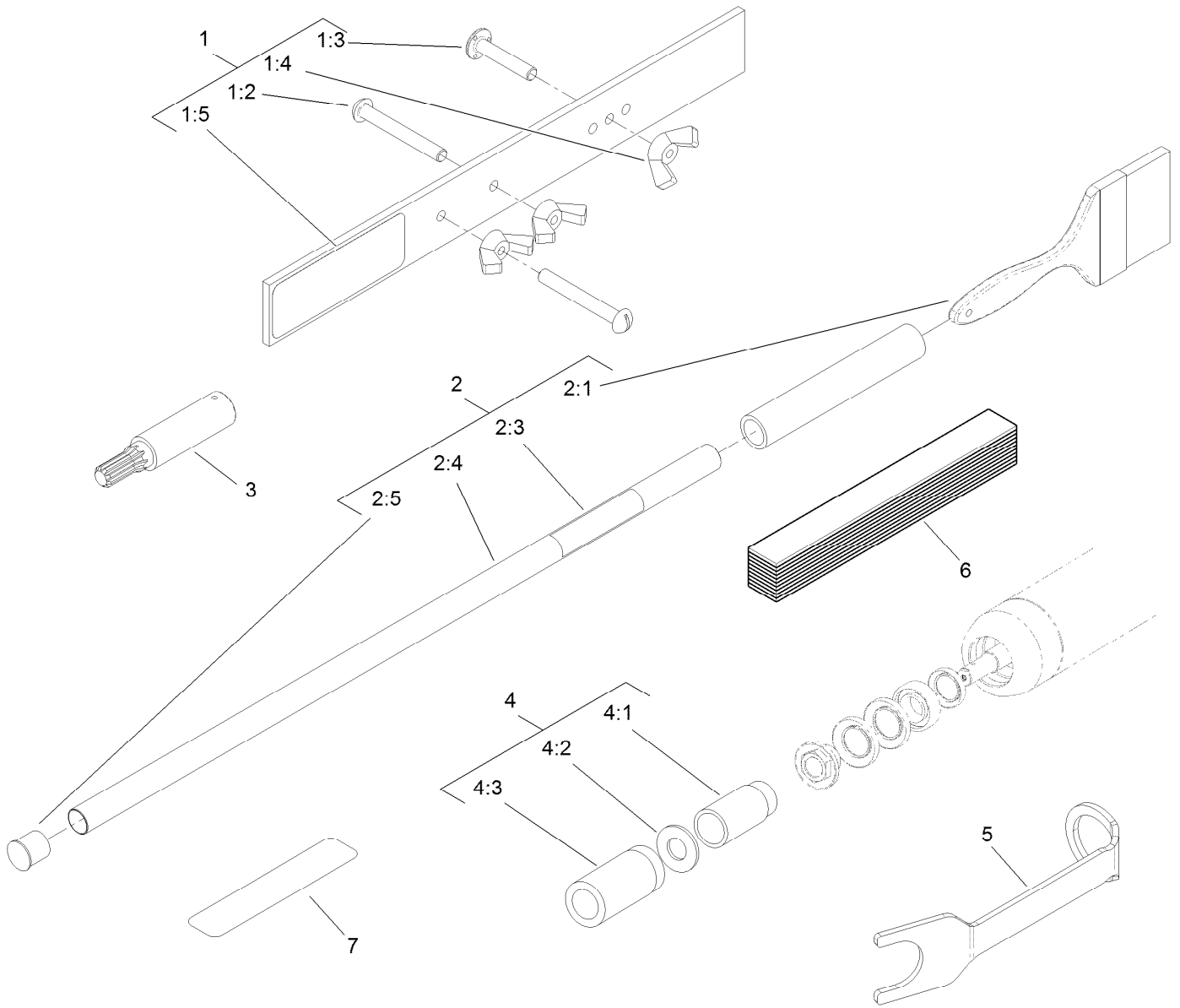
Optional Shoulder Roller Assembly No. 119-0630

<i>Ref.</i>	<i>Part Number</i>	<i>Qty.</i>	<i>Description</i>
1	119-0631	1	Roller-Shoulder, Plastic
2	117-0957	1	Shaft-Roller, Wiehle
7	302-5	2	Fitting-Grease
50	114-5430	1	Roller Rebuild Kit
50:1	114-3717	2	Seal-Oil
50:2	112-5290	2	Bearing-Steel, Stainless
50:3	112-7494	4	Seal
50:4	114-5411	2	Nut-Lock, Bearing



Shield Assembly

Ref.	Part Number	Qty.	Description
1	107-7773	1	Screw-HSH
2	3234-7	4	Screw-HHF
3	112-8942	1	Front Grass Shield ASM
3:2	93-6688	1	Decal-Danger
4	112-8944-01	1	Rear Grass Shield ASM
5	3256-74	1	Washer-Flat
6	322-14	1	Screw-HH
7	110-1706	6	Deflector
8	32128-20	4	Nut-HF



Optional Tool Assembly

<i>Ref.</i>	<i>Part Number</i>	<i>Qty.</i>	<i>Description</i>	<i>Ref.</i>	<i>Part Number</i>	<i>Qty.</i>	<i>Description</i>
1	108-6715	1	Gauge Bar ASM	3	TOR4074	1	Adapter-Drive, Reel ●
1:2	32122-54	2	Screw-Head, Truss	4	115-0803	1	Roller Rebuild Tool Kit
1:3	108-6714	1	Stud-Weld	4:1	115-0852	1	Tool-Inner Seal
1:4	32103-3	3	Nut-Wing	4:2	107-8133	1	Washer-Flat
1:5	108-6712	1	Decal-Gauge, Bar	4:3	115-0853	1	Tool-Bearing/Outer Seals
2	29-9100	1	Brush And Handle ASM	5	117-0975	1	Tool-Installation, Reel Bearing
2:1	36-4310	1	Brush	6	125-5610	1	Paper-Reel, Toro (10 Pack)
2:3	98-3206	1	Decal	7	125-5611	1	Shim-Toro Reel (0.002 Inch)
2:4	29-9080	1	Handle				
2:5	2410-18	1	Cap-Plastic				

● Obtain directly from K-Line Industries, Inc. (800) 241-0936

Attachments and Accessories

For 03181 8-Blade 27-inch DPA Cutting Unit Reelmaster 3100-D Series Traction Unit

Product Name	Model/Part
27in Verticutter.....	03184
Basket Kit	03185
27in Rear Roller Brush Kit	03186
Turf Evaluator	04399
Gauge Bar Assembly.....	108-6715
Groomer/RRB Bearing and Seal Kit.....	110-4086
High Height-of-Cut Kit.....	110-9600
27in Bedknife-Edgemax	112-8910
Roller Rebuild Kit.....	114-5430
Rear Roller Scraper Kit.....	114-9368
Wiehle Scraper ASM	114-9372-03
Comb/Scraper Kit	114-9376
Shoulder Scraper ASM.....	114-9381-03
Full Front Roller ASM (3in dia).....	114-9383
Full Front Roller Scraper ASM (3in dia).....	114-9386-03
Bedknife-HD	114-9390
Roller Rebuild Tool Kit.....	115-0803
Brush-Roller (High HOC)	115-0838
Reel Bearing Installation Tool	117-0975
Plastic Shoulder Roller ASM.....	119-0630
Roller Tipper Kit	119-0635
Fixed Plate (High HOC)	119-0646-03
Trim/Heavy-Duty Collar Kit	119-0649
Cutting Unit Kickstand	119-8010-03
Low HOC Extended Bedknife	120-1641
Heavy-Duty DPA MVP Kit	120-7230
Toro Reel Paper (10 Pack).....	125-5610
Toro Reel Shim (0.002in)	125-5611
Brush and Handle Kit.....	29-9100
Reel Drive Adapter	TOR4074

Notes:



Count on it.