



48in Blower and Drive Kit

E-Z Vac™ Twin Bagger for TITAN® Zero-Turn-Radius Riding Mower

Model No. 79340—Serial No. 313000001 and Up

Model No. 79340—Serial No. 314000001 and Up

Model No. 79341—Serial No. 314000001 and Up

Model No. 79341—Serial No. 313000001 and Up

Model No. 79342—Serial No. 313000001 and Up

Model No. 79342—Serial No. 314000001 and Up

Installation Instructions

Note: Determine the left and right sides of the machine from the normal operating position.

⚠ WARNING

CALIFORNIA Proposition 65 Warning

This product contains a chemical or chemicals known to the State of California to cause cancer, birth defects, or reproductive harm.

Loose Parts

Use the chart below to verify that all parts have been shipped.

Procedure	Description	Qty.	Use
1	No parts required	—	Prepare the mower.
2	No parts required	—	Remove the existing belt cover and the discharge chute.
3	No parts required	—	Drill the baffle hole.
4	No parts required	—	Remove the bracket for the belt cover.
5	Blower support Baffle Bolt (5/16 x 1 inch) Flange nut (5/16 inch)	1 1 3 5	Install the baffle and blower support for 48 inch mower decks.
6	Blower support Large baffle Small baffle Bolt (5/16 x 1 inch) Flange nut (5/16 inch)	1 1 1 3 5	Install the baffle and blower support for 54 inch mower decks.
7	Blower support Baffle Cutoff baffle Bolt (5/16 x 1 inch) Flange nut (5/16 inch) Carriage bolt (5/16 x 3/4 inch)	1 1 1 5 10 3	Install the baffle and blower support for 60 inch mower decks.



Procedure	Description	Qty.	Use
8	Pulley assembly	1	Install the pulley assembly and shoulder bolt.
	Shoulder bolt	1	
	Flange nut (5/16 inch)	1	
	Metal belt cover	1	
9	Blower assembly	1	Install the blower assembly, bagger belt, spring, and plastic belt cover.
	Bagger belt	1	
	Spring	1	
	Plastic belt cover	1	

1

Preparing the Mower

No Parts Required

Procedure

Perform the following procedure to prepare the mower for attaching the blower and finishing kit.

1. Disengage the PTO, move the motion control levers to the neutral locked position, and set the parking brake.
2. Stop the engine, remove the key, and wait for all moving parts to stop before leaving the operating position.
3. Repair all bent or damaged areas of the mower deck and replace any missing parts.
4. Clean the mower of any debris on the deck or rear part of the mower to ease installation.

2

Removing the Existing Belt Cover and the Discharge Chute

No Parts Required

Procedure

Note: Clean the area around the belt cover before removing it.

1. Lower the mower deck to the lowest height-of-cut position.
2. Loosen the right-hand, belt-cover bolts (Figure 1).

Note: For the 60 inch mower-deck belt cover, the bolts will need to be removed.

3. Remove the right-hand belt cover.

4. Remove fasteners securing the deflector assembly and existing cutoff baffle to the deck (Figure 1). Retain all fasteners.
5. For 54 inch mower decks only, remove the fasteners plugging the forward hole. (Figure 1).

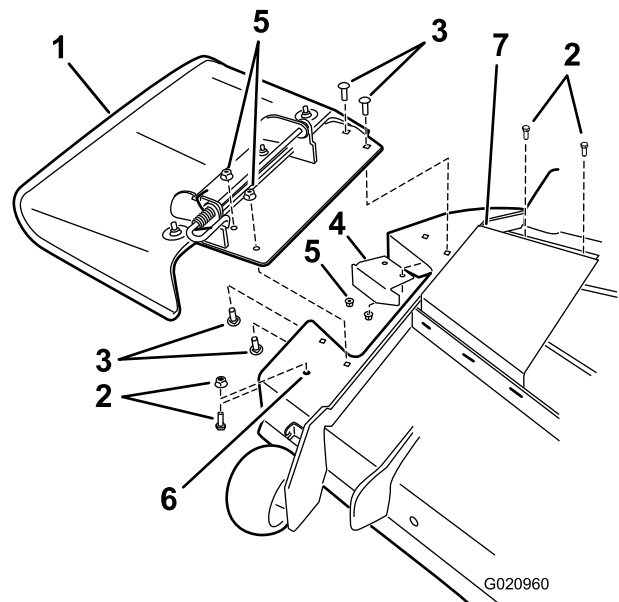


Figure 1

- | | |
|---------------------------------|--|
| 1. Deflector assembly | 5. Lock nut (existing) |
| 2. Fasteners (existing), retain | 6. Forward hole (54 inch mower decks only) |
| 3. Carriage bolt (existing) | 7. Belt cover |
| 4. Cutoff baffle (existing) | |

6. Store the right hand belt cover and the discharge chute for later use. Install them when the bagger, blower, and the pulley are removed.

3

Drilling the Baffle Hole

No Parts Required

Procedure

Certain 54 inch and 60 inch mower decks need a second hole to install the baffle. Use Figure 2 to determine if you have the second hole. If you have the second hole, go to the next procedure.

1. From the center of existing slot, measure over the correct distance as shown in Figure 2.
2. Mark and center punch the position for the new hole.
3. Drill a new 3/8 inch hole.

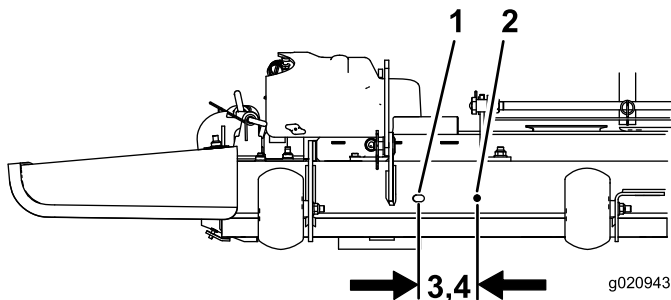


Figure 2

1. Existing slot
2. Drill 3/8 inch hole
3. Measure 9.52 cm (3-3/4 inches) for 54 inch mower decks
4. Measure 11.43 cm (4-1/2 inches) for 60 inch mower decks

4

Removing the Bracket for the Belt Cover

No Parts Required

Procedure

Note: This procedure is for only belt covers with knobs as shown in Figure 3.

1. Remove the knob and the belt cover from the mower deck (Figure 3).
2. Remove the bracket attached to the mower deck (Figure 3). Save the bolts to mount the metal-belt cover.

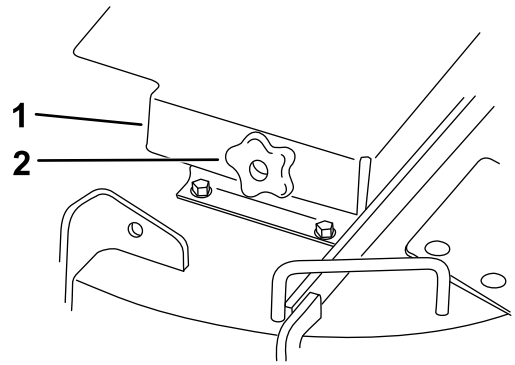


Figure 3

1. Belt cover
2. Knob
3. Bracket
4. Bolts (retain)

5

Installing the Baffle and Blower Support for 48 inch Mower Decks

Parts needed for this procedure:

1	Blower support
1	Baffle
3	Bolt (5/16 x 1 inch)
5	Flange nut (5/16 inch)

Procedure

This procedure is for 48 inch mower decks only.

1. Align the baffle so the baffle studs go through the front and top mower deck holes.
2. Install the baffle to the front of the mower deck with a flange nut (5/16 inch) (Figure 4).
3. Install the blower support and existing cutoff baffle to the top of the mower deck with 3 bolts (5/16 x 1 inch) and 3 flange nuts (5/16 inch). Refer to Figure 4

for the correct position of the blower support and the existing cutoff baffle.

4. Using the vertical stud in the baffle, install the blower support to the mower deck with a flange nut (5/16 inch) (Figure 4).

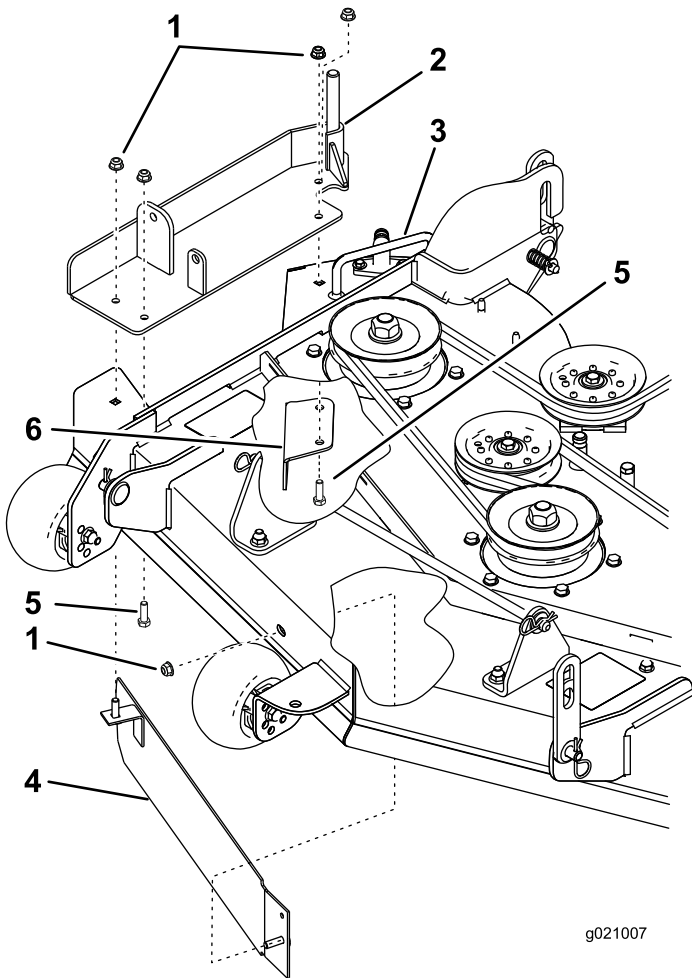


Figure 4

- | | |
|---------------------------|---------------------------|
| 1. Flange nut (5/16 inch) | 4. Baffle |
| 2. Blower support | 5. Bolt (5/16 x 1 inch) |
| 3. Mower deck | 6. Existing cutoff baffle |

6

Installing the Baffle and Blower Support for 54 inch Mower Decks

Parts needed for this procedure:

1	Blower support
1	Large baffle
1	Small baffle
3	Bolt (5/16 x 1 inch)
5	Flange nut (5/16 inch)

Procedure

This procedure is for 54 inch mower decks only.

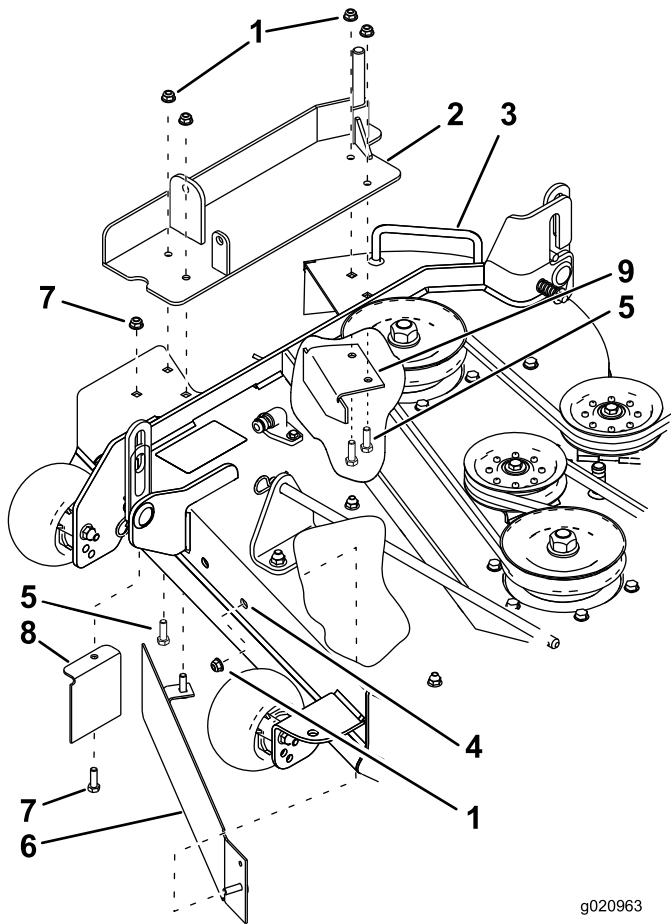
1. Align the large baffle so the baffle studs go through the front and top mower deck holes.
2. Install the large baffle to the front of the mower deck with a flange nut (5/16 inch) (Figure 5).
3. Install the blower support and existing cutoff baffle to the mower deck with 3 bolts (5/16 x 1 inch) and 3 flange nuts (5/16 inch). Refer to Figure 5 for the correct position of the blower support and the existing cutoff baffle.
4. Using the vertical stud in the large baffle, install the baffle and blower support of the mower deck with a flange nut (5/16 inch) (Figure 5).
5. Using the existing nut and bolt, loosely install the small baffle to the mower deck (Figure 5).
6. Rotate the small baffle until it touches the large baffle and the front of the mower deck.
7. Tighten the existing nut and bolt.

7

Installing the Baffle and Blower Support for 60 inch Mower Decks

Parts needed for this procedure:

1	Blower support
1	Baffle
1	Cutoff baffle
5	Bolt (5/16 x 1 inch)
10	Flange nut (5/16 inch)
3	Carriage bolt (5/16 x 3/4 inch)



g020963

Figure 5

- | | |
|---|---------------------------|
| 1. Flange nut (5/16 inch) | 6. Large baffle |
| 2. Blower support | 7. Use existing hardware |
| 3. Mower deck | 8. Small baffle |
| 4. If needed, drill a 3/8 inch hole here for the baffle | 9. Existing cutoff baffle |
| 5. Bolt (5/16 x 1 inch) | |

Procedure

This procedure is for 60 inch mower decks only.

1. Install the cutoff baffle to the blower support with 2 carriage bolts (5/16 x 3/4 inch) and a 2 flange nuts (5/16 inch) (Figure 6).
2. Align the large baffle so the baffle studs go through the front and top mower deck holes.
3. Install the large baffle to the front of the mower deck with a flange nut (5/16 inch) (Figure 6).
4. Using the vertical stud in the baffle, install the baffle to the top of the mower deck with a flange nut (5/16 inch) (Figure 6).

Note: If necessary, remove the existing hardware.

5. Install the blower support to the mower deck with 4 bolts (5/16 x 1 inch) and 4 flange nuts (5/16 inch) (Figure 6).
6. Install the baffle guard to the baffle with a carriage bolt (5/16 x 3/4 inch) and a flange nut (5/16 inch) (Figure 6).
7. Install the baffle guard to the mower deck with a bolt (5/16 x 1 inch) and a flange nut (5/16 inch) (Figure 6).

8

Installing the Pulley Assembly, Metal Belt Cover, and Shoulder Bolt

Parts needed for this procedure:

1	Pulley assembly
1	Shoulder bolt
1	Flange nut (5/16 inch)
1	Metal belt cover

Procedure

1. Remove the nut and washer from the right hand mower deck pulley.
2. Install the pulley assembly to the right mower deck pulley with the previously removed nut. Do not use the washer. Save the washer and use it when the pulley assembly is removed (Figure 7).
3. Torque the nut to 136–149 N-m (100–110 ft-lb).

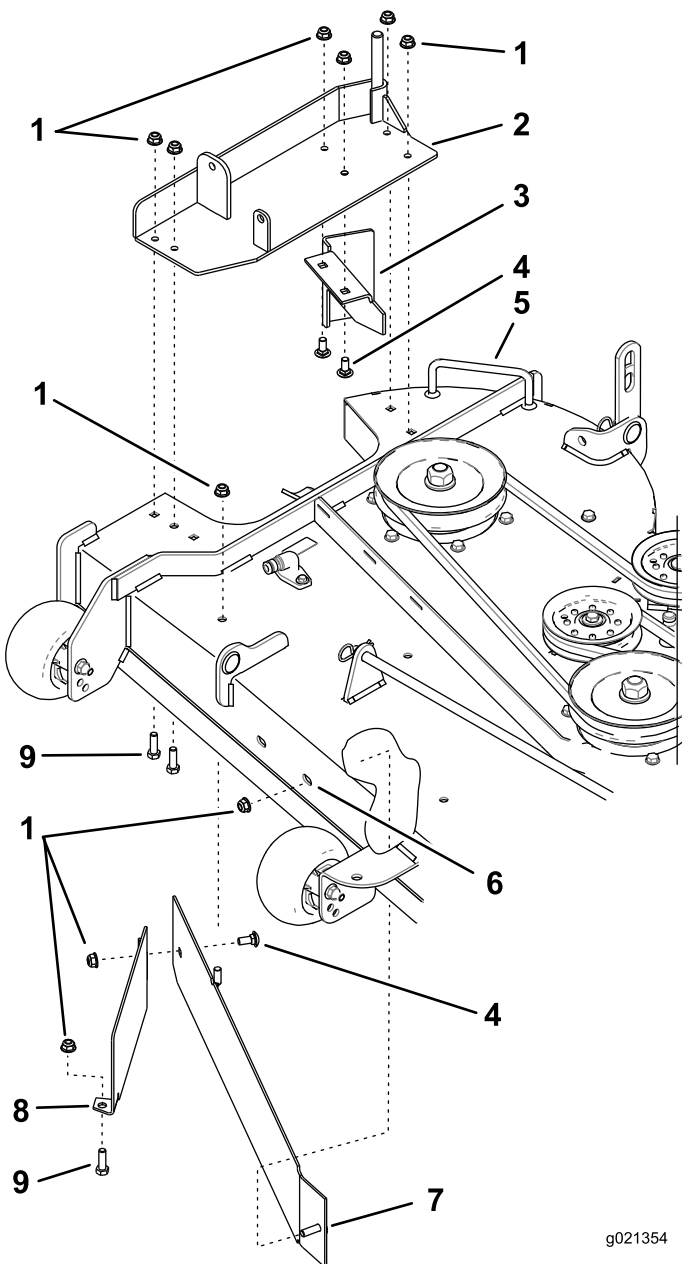


Figure 6

- | | |
|------------------------------------|--|
| 1. Flange nut (5/16 inch) | 6. If needed, drill a (3/8 inch) hole here for the baffle |
| 2. Blower support | 7. Large baffle |
| 3. Cut-off baffle | 8. Attach baffle guard to the front edge of the mower deck |
| 4. Carriage bolt (5/16 x 3/4 inch) | 9. Bolt (5/16 x 1 inch) |
| 5. Mower deck | |

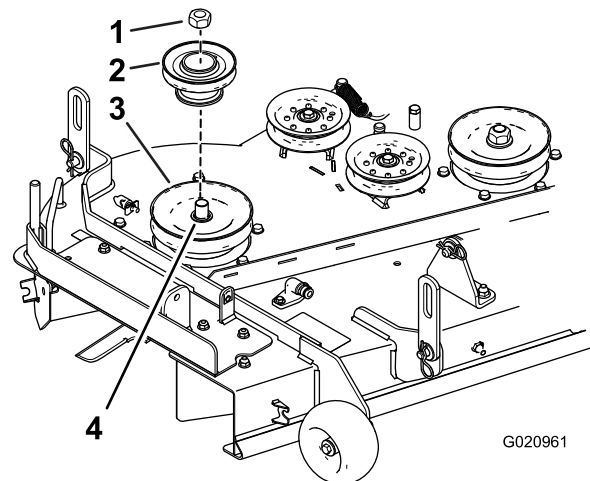


Figure 7

54 inch mower deck shown

- | | |
|------------------------|-----------------------------------|
| 1. Existing pulley nut | 3. Existing deck (spindle) pulley |
| 2. Blower pulley | 4. Spindle |

4. For the machines with belt-cover knobs (Figure 3), install the bolts used for the bracket. Refer to Figure 9 to use the bolt heads for the new metal-belt cover.
5. Install the shoulder bolt to the rear of the slot in blower assembly. Secure the shoulder bolt with a flange nut (5/16 inch).

9

Installing the Blower Assembly, Bagger Belt, Spring, and Plastic Belt Cover

Parts needed for this procedure:

1	Blower assembly
1	Bagger belt
1	Spring
1	Plastic belt cover

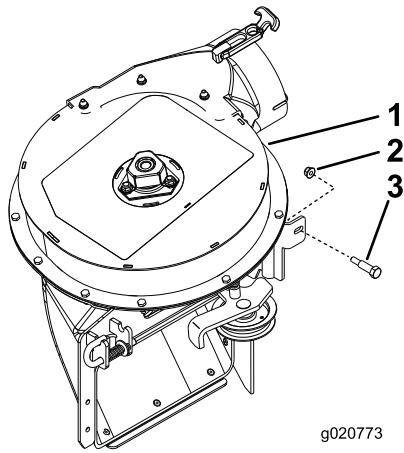


Figure 8

1. Blower assembly
2. Flange nut (5/16 inch)
3. Shoulder bolt

6. Install the metal belt cover over the existing bolt heads on the mower deck.
7. Slide the metal belt cover forward so the front tabs are in the slots and the bolt heads slide into the key slots (Figure 9).

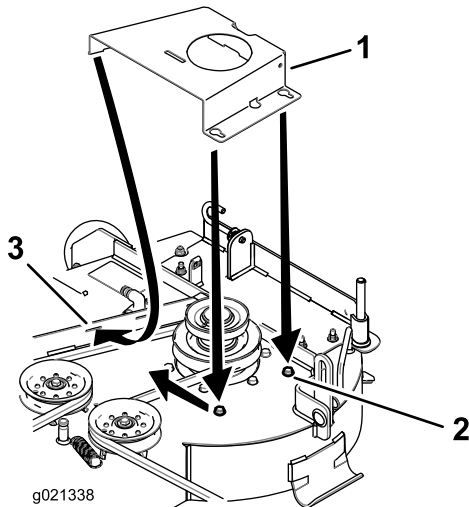


Figure 9

1. Metal-belt cover
2. Bolt heads
3. Front tabs slide into slots

Procedure

Refer to the *Bagger Operator's Manual* for the correct procedure to install the blower assembly, bagger belt, spring, and belt covers.



Count on it.