



Power Throw™

824 XL Snowthrower

Model No. 38083-8900001 & Up

Model No. 38084-8900001 & Up

Parts Catalog

ORDERING REPLACEMENT PARTS

To order replacement parts, please supply: the part number, the quantity, and the description of each part desired.

Contents

| Description | Page | Description | Page |
|---|------|--|------|
| Auger and Housing Assembly | 1 | Handle and Controls Assembly | 7 |
| Auger and Housing Assembly (Continued) | 2 | Handle and Controls Assembly (Continued) | 8 |
| 24" Auger Gearcase Assembly No. 74-1560 | 3 | | |
| Upper Traction Assembly | 4 | | |
| Lower Traction Assembly | 5 | | |
| Engine and Frame Assembly | 6 | | |

Accessories

| Description | Model / Parts No. | Description | Model / Parts No. |
|------------------------------------|-------------------|---------------------|-------------------|
| 110 Vac Electric Starter Kit | 38039 | Drift Breaker | 66-7960 |
| Tire Chain Kit | 56-2700 | Snow Cab | 95-2650 |
| Light Kit | 66-7941 | | |

Part Description Abbreviations

Part descriptions in this catalog may include the following abbreviations.

| Abbreviation | Meaning | Abbreviation | Meaning |
|--------------|------------------------|--------------|-----------------------------------|
| AR | as required | HWHTF | hex washer head thread forming |
| ASM | assembly | INC | incorporated |
| CARR | carriage | LH | left hand |
| DEG | degrees | PH | pan head |
| FH | flat head | PPH | Phillips pan head |
| GA | gauge | PTO | power take off |
| HF | hex flange | RH | right hand |
| HFW | hex flange washer | SFH | slotted fillister head |
| HH | hex head | SH | square head |
| HHF | hex head flange | SHWH | slotted hex washer head |
| HHST | hex head self tapping | SPH | slotted pan head |
| HJ | hex jam | STD | standard |
| HOC | height-of-cut | TAP | self tapping |
| HS | hex socket | TH | truss head |
| HSBH | hex socket button head | TTH | Torx truss head |
| HSFH | hex socket flat head | WH | wing head |
| HSH | hex socket head | | |
| HWH | hex washer head | | |

Important Format Explanations

This catalog uses special formats to convey information in illustrations and parts lists. Specifically, one format is used in conjunction with service assemblies and another with quantities associated with reference numbers.

Service Assemblies

Parts within service assemblies have reference numbers in the form $X:Y$. X is the reference number of the service assembly and Y is a sequential number unique to each part within the service assembly.

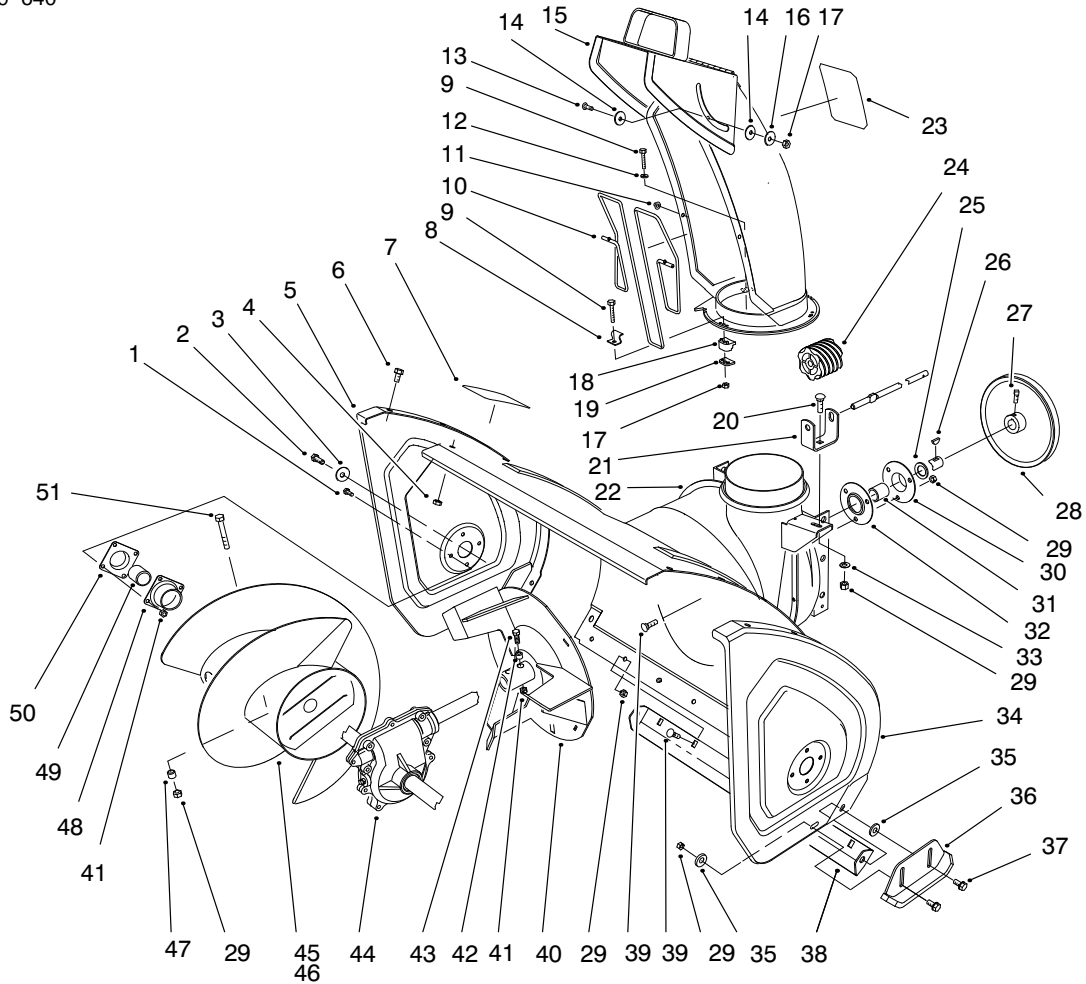
For example, a wheel assembly might be identified by reference number 6, the tire by 6:1, the valve by 6:2, and the wheel by 6:3. When you order the assembly identified by reference number 6, you receive all parts identified by reference numbers 6:1, 6:2, and 6:3. However, you may also order any part individually.

Reference numbers of this type appear in part lists and as callouts in illustrations.

Reference Numbers with Quantities

Illustrations may have a quantity in parentheses next to a reference number, in the form $X (Y)$. X is the reference number. Y in parentheses is the quantity of the part identified by the reference number.

For example, the illustration callout 4 (2) indicates that two parts are used in that instance.

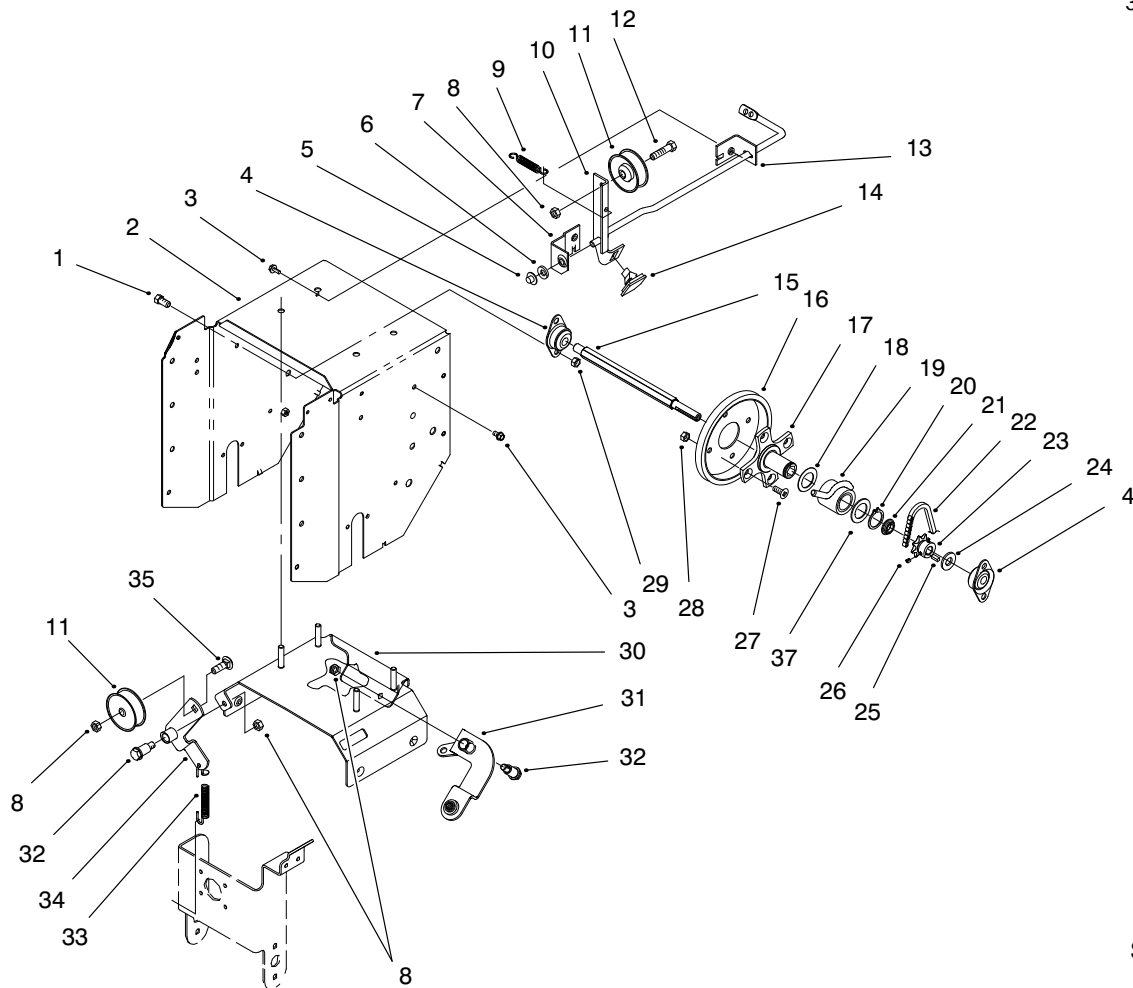


Sheet No.:2

Auger and Housing Assembly

| Ref. No. | Part No. | Qty. | Description |
|----------|----------|------|--------------------------------|
| 1 | 321-3 | 8 | Screw-HH |
| 2 | 323-4 | 2 | Screw-HH |
| 3 | 3-0750 | 2 | Washer-Retaining |
| 4 | 3296-47 | 12 | Nut-Lock |
| 5 | 66-7821 | 1 | Plate-Side |
| 6 | 3234-28 | 12 | Screw-HHF |
| 7 | 53-7670 | 1 | Decal-Warning (Only On: 38083) |
| 7 | 94-2568 | 1 | Decal-Warning (Only On: 38084) |
| 8 | 63-3130 | 1 | Clip-Guard |
| 9 | 3274-13 | 3 | Screw-HSH |
| 10 | 63-3020 | 1 | Guard-Chute |
| 11 | 3290-326 | 2 | Nut-Push |
| 12 | 3256-14 | 2 | Washer-Flat |
| 13 | 32122-32 | 1 | Screw-TH |
| 14 | 63-2900 | 2 | Washer-Plastic |
| 15 | 95-2661 | 1 | ASM-Chute (Only On: 38083) |
| 15 | 95-2662 | 1 | ASM-Chute (Only On: 38084) |
| 16 | 3256-61 | 1 | Washer-Flat |
| 17 | 3296-2 | 4 | Nut Lock |
| 18 | 62-1430 | 3 | Retainer-Chute |
| 19 | 63-2670 | 3 | Plate-Retainer |
| 20 | 3230-1 | 1 | Bolt-CARR |

| Ref. No. | Part No. | Qty. | Description |
|----------|----------|------|-------------------------------|
| 21 | 63-2180 | 1 | Bracket-Worm |
| 22 | 95-2663 | 1 | ASM-Housing (Only On: 38083) |
| 22 | 95-2664 | 1 | ASM-Housing (Only On: 38084) |
| 23 | 94-2558 | 1 | Decal-Danger (Only On: 38084) |
| 23 | 94-8079 | 1 | Decal-Danger (Only On: 38083) |
| 24 | 62-0820 | 1 | Gear-Worm |
| 25 | 252-80 | 1 | Washer-Thrust |
| 26 | 3257-23 | 1 | Key-Woodruff |
| 27 | 3242-4 | 2 | Screw-Set |
| 28 | 62-1300 | 1 | Pulley-Impeller |
| 29 | 3296-29 | 14 | Nut-Lock |
| 30 | 26-6110 | 1 | Bearing-Flange |
| 31 | 63-3450 | 1 | Bearing-Ball |
| 32 | 26-6120 | 1 | Bearing-Flange |
| 33 | 3256-23 | 1 | Washer-Flat |
| 34 | 66-7831 | 1 | Plate-Side |
| 35 | 52-2861 | 4 | Washer |
| 36 | 74-1440 | 2 | Skid |
| 37 | 3234-5 | 4 | Screw-HHF |
| 38 | 66-7762 | 1 | Blade-Scraper |
| 39 | 3230-23 | 9 | Bolt-CARR |
| 40 | 66-7910 | 1 | Impeller |

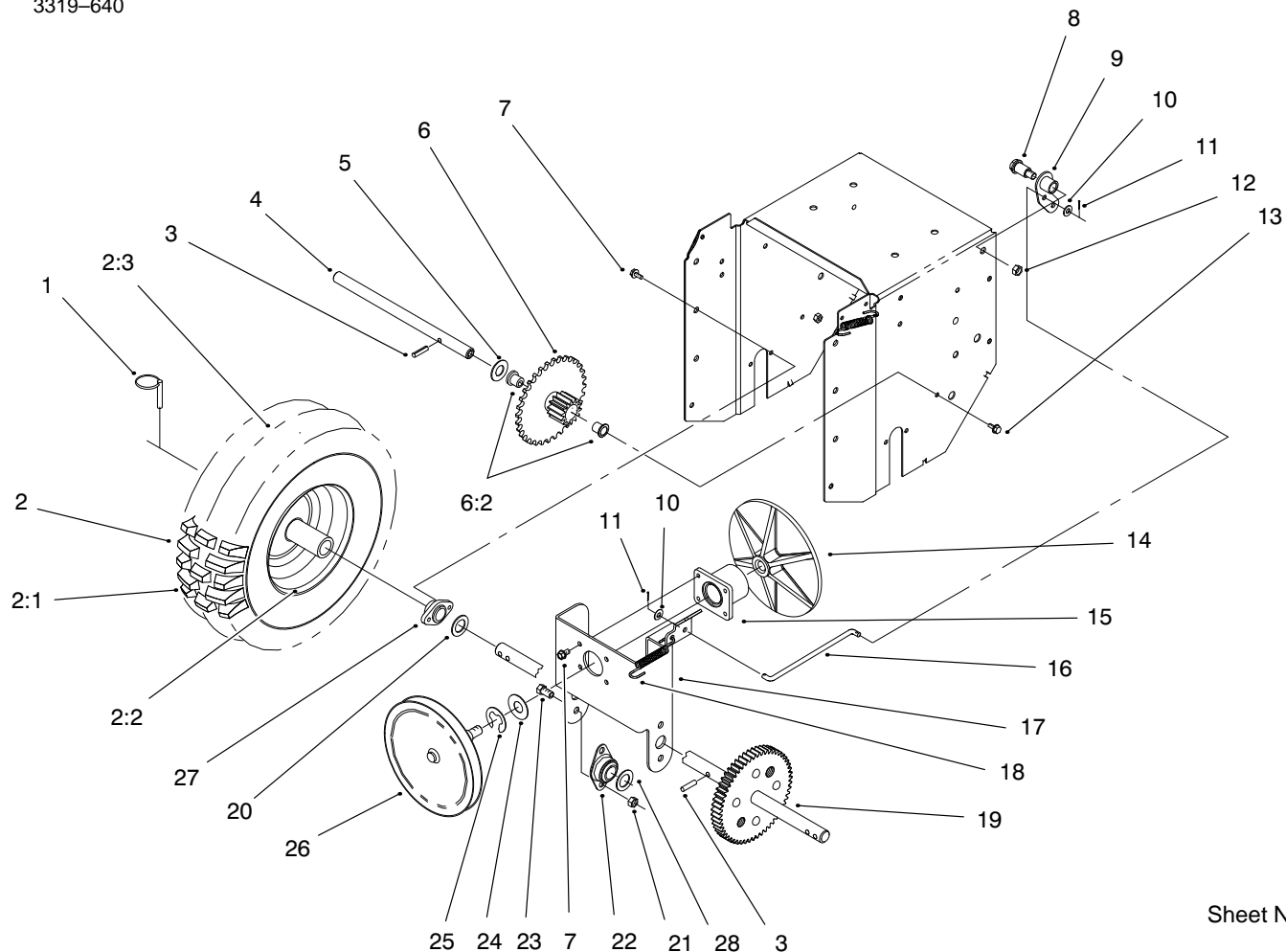


Sheet No.:3

Upper Traction Assembly

| Ref. No. | Part No. | Qty. | Description |
|----------|----------|------|---------------------------|
| 1 | 323-4 | 4 | Screw-HH |
| 2 | 94-8852 | 1 | Frame |
| 3 | 32144-4 | 6 | Screw-TAP |
| 4 | 94-8824 | 2 | Bearing-Triangle 1/2" |
| 5 | 3290-320 | 1 | Nut-Push |
| 6 | 3256-24 | 1 | Washer-Flat |
| 7 | 94-8829 | 1 | Mounting-Bracket |
| 8 | 3296-59 | 4 | Nut-Lock |
| 9 | 53-7570 | 1 | Spring-Auger Disengage |
| 10 | 94-8828 | 1 | Auger Clutch Rod |
| 11 | 3-4244 | 2 | Pulley-Idler |
| 12 | 323-29 | 1 | Screw-HH |
| 13 | 94-8841 | 1 | Mtg-Clutch |
| 14 | 66-8060 | 1 | ASM-Brake |
| 15 | 94-8816 | 1 | Shaft-Hex |
| 16 | 40-8170 | 1 | Friction Wheel |
| 17 | 95-7931 | 1 | Hub-Traction Disc |
| 18 | 256-260 | 1 | Washer |
| 19 | 94-8883 | 1 | ASM-Slider Ring |
| 20 | 32151-36 | 1 | Ring-Retaining Ext |
| 21 | 94-8862 | 1 | Spacer Stop |
| 22 | 20-1810 | 1 | Chain w/Link |
| 23 | 5-9820 | 1 | Sprocket 8t |
| 24 | 87-7270 | 1 | Washer-Hardened |
| 25 | 94-8850 | 1 | Key-Square |

| Ref. No. | Part No. | Qty. | Description |
|----------|----------|------|------------------------|
| 26 | 3245-32 | 2 | Screw-Set |
| 27 | 322-3 | 4 | Screw-HH |
| 28 | 3296-47 | 4 | Nut-Lock |
| 29 | 3296-39 | 4 | Nut-Lock |
| 30 | 94-8851 | 1 | ASM-Brace/Stud |
| 31 | 94-8821 | 1 | ASM-Shift Arm |
| 32 | 94-8859 | 2 | Shoulder Bolt |
| 33 | 94-8870 | 1 | Spring-Extension Idler |
| 34 | 94-8864 | 1 | Idler-Bracket/Hub |
| 35 | 3231-26 | 1 | Screw-CARR |
| 36 | 9202594 | 1 | Washer |
| 37 | 98-2252 | 1 | Washer-Thrust |

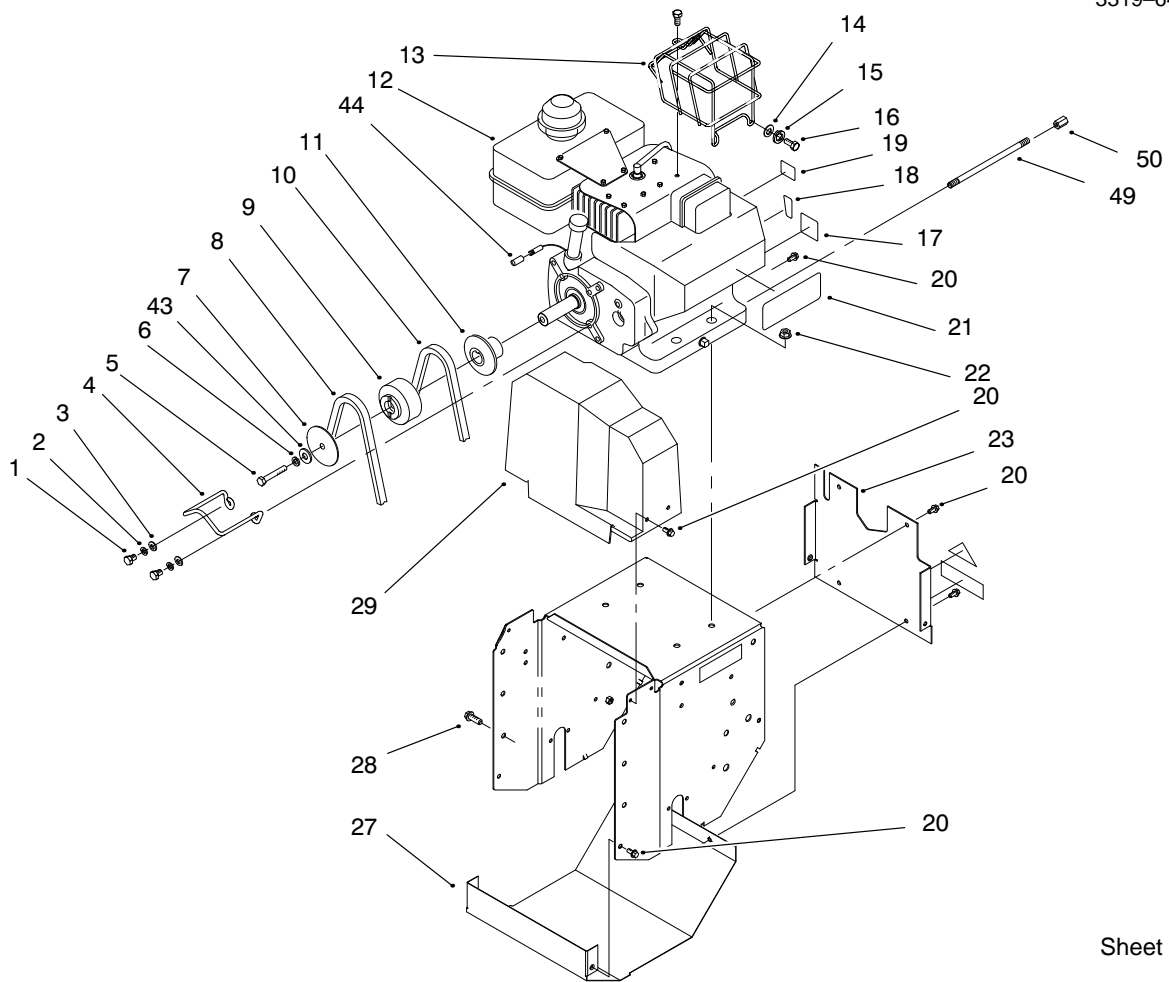


Sheet No.:4

Lower Traction Assembly

| Ref. No. | Part No. | Qty. | Description |
|----------|----------|------|--------------------------|
| 1 | 3290-243 | 2 | Pin-Lynch |
| 2 | | 2 | ASM-Wheel |
| 2:1 | 231-120 | 2 | Tire |
| 2:2 | 241-131 | 2 | Rim |
| 2:3 | 232-46 | 2 | Tube |
| 3 | 32121-9 | 4 | Pin-Roll |
| 4 | 94-8814 | 1 | Shaft-Intermediate |
| 5 | 7-3590 | 1 | Washer |
| 6 | 94-8856 | 1 | ASM-Gear & Bushing |
| 6:2 | 94-8871 | 2 | Bushing (Only On: 38083) |
| 7 | 32144-4 | 8 | Screw-TAP |
| 8 | 94-8859 | 1 | Shoulder Bolt |
| 9 | 94-8822 | 1 | Bellcrank-Hub |
| 10 | 3256-67 | 2 | Washer-Flat |
| 11 | 3272-4 | 2 | Pin-Cotter |
| 12 | 3296-59 | 1 | Nut-Lock |
| 13 | 32144-14 | 2 | Screw-HWH |
| 14 | 94-8857 | 1 | Plate-Friction |
| 15 | 94-8845 | 1 | ASM-Bearing/Hub |
| 16 | 94-8818 | 1 | Rod-Traction (Inner) |
| 17 | 94-8833 | 1 | Frame-Friction Plate |
| 18 | 94-8813 | 1 | Spring-Engage |
| 19 | 94-8855 | 1 | Axle |
| 20 | 3-8664 | 2 | Washer-Thrust |
| 21 | 3296-39 | 4 | Nut-Lock |

| Ref. No. | Part No. | Qty. | Description |
|----------|-----------|------|-----------------------|
| 22 | 68-2970 | 2 | Bearing-Triangle 3/4" |
| 23 | 323-4 | 4 | Screw-HH |
| 24 | 252-80 | 1 | Washer-Thrust |
| 25 | 32151-103 | 1 | Snap Ring |
| 26 | 94-8823 | 1 | ASM-Pulley & Shaft |
| 27 | 37-6850 | 2 | Bearing-Axle |
| 28 | 3-6498 | 2 | Washer-Thrust |

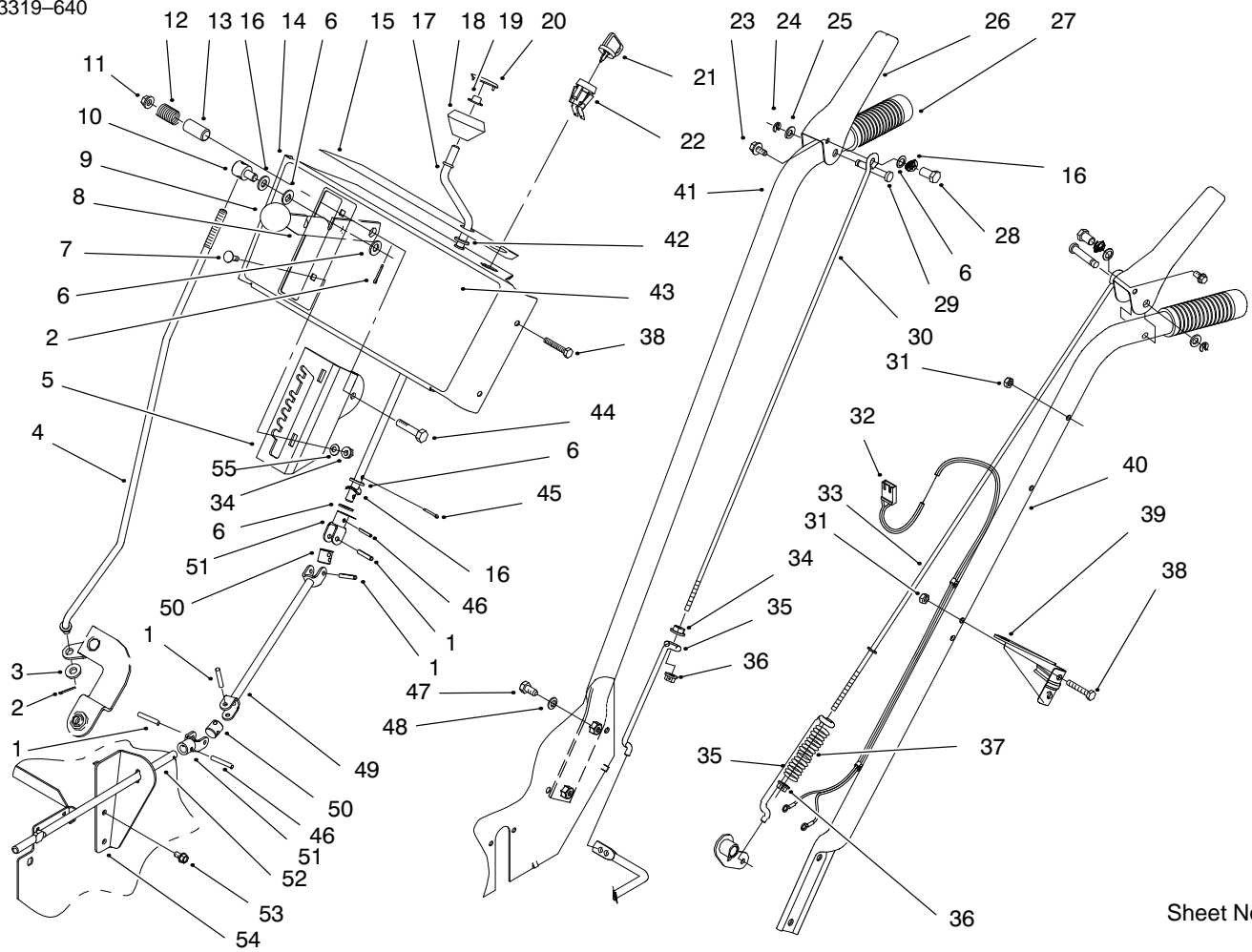


Sheet No.:5

Engine and Frame Assembly

| Ref. No. | Part No. | Qty. | Description |
|----------|----------|------|--------------------------------------|
| 1 | 3210-3 | 2 | Screw-HH |
| 2 | 3253-4 | 2 | Washer-Lock |
| 3 | 3256-23 | 2 | Washer-Flat |
| 4 | 95-7917 | 1 | Guide-Belt |
| 5 | 3212-8 | 1 | Screw-HH Cap |
| 6 | 3253-6 | 1 | Washer-Lock |
| 7 | 62-0940 | 1 | Sheave-Half |
| 8 | 94-8803 | 1 | Belt-Impeller |
| 9 | 94-8849 | 1 | Pulley-Engine |
| 10 | 94-8812 | 1 | Belt-Traction |
| 11 | 62-0920 | 1 | Sheave-Half |
| 12 | | 1 | Engine-Tecumseh |
| 13 | 94-2763 | 1 | Guard-Muffler (Only On: 38084) |
| 14 | 93-8038 | 2 | Washer-Flat (Only On: 38084) |
| 15 | 93-8039 | 2 | Washer-Lock (Only On: 38084) |
| 16 | 93-8048 | 2 | Screw-Self Drilling (Only On: 38084) |
| 17 | 94-2572 | 1 | Decal-Primer |
| 18 | 63-3190 | 1 | Decal-Throttle |
| 19 | 63-2410 | 1 | Decal-Choke |
| 20 | 32144-4 | 12 | Screw-TAP |
| 21 | 66-6840 | 1 | Decal-Hot Surface (Only On: 38083) |

| Ref. No. | Part No. | Qty. | Description |
|----------|----------|------|------------------------------------|
| 21 | 93-1265 | 1 | Decal-Hot Surface (Only On: 38084) |
| 22 | 32128-20 | 4 | Nut-Lock |
| 23 | 94-8842 | 1 | Plate-Back |
| 27 | 94-8844 | 1 | Cover-Lower Traction |
| 28 | 32144-14 | 6 | Screw-HWH |
| 29 | 94-8802 | 1 | Cover-Belt |
| 43 | 3256-41 | 1 | Washer-Flat |
| 44 | 94-2782 | 1 | Cap-Wire |
| 49 | 289-34 | 1 | Nipple-Pipe |
| 50 | 288-2 | 1 | Cap-Pipe |

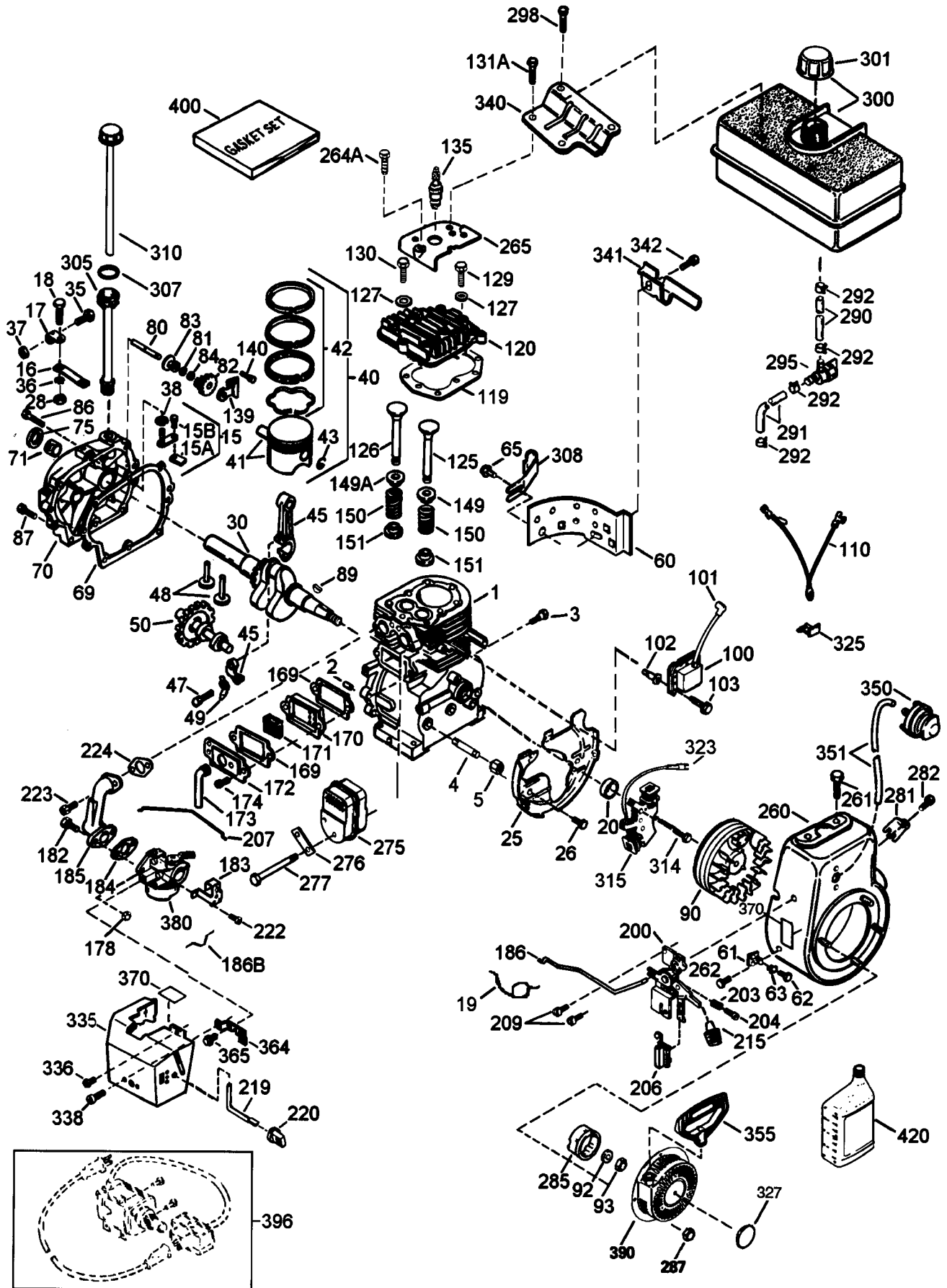


Handle and Controls Assembly

| Ref. No. | Part No. | Qty. | Description |
|----------|------------|------|---|
| 1 | 32121-16 | 4 | Pin-Roll |
| 2 | 3272-4 | 2 | Pin-Cotter |
| 3 | 3256-38 | 1 | Washer-Flat |
| 4 | 94-9875 | 1 | Rod-Shift |
| 5 | 94-8807 | 1 | Mount-Speed Selector |
| 6 | 3256-24 | 6 | Washer-Flat |
| 7 | 3229-11 | 2 | Bolt-CARR |
| 8 | 94-8806 | 1 | Speed Selector |
| 9 | 233-21 | 1 | Knob |
| 10 | 110656 | 1 | Trunnion |
| 11 | 32128-13 | 1 | Nut-Lock Flange |
| 12 | 37-9150-01 | 1 | Spring |
| 13 | 40-8130 | 1 | Spacer-Speed Selector |
| 14 | 94-8808 | 1 | Panel-Control |
| 15 | 93-8032 | 1 | Decal-Control Panel Back (Only On: 38084) |
| 15 | 93-8033 | 1 | Decal-Control Panel Back (Only On: 38083) |
| 16 | 612586 | 4 | Washer-Spring |
| 17 | 94-8810 | 1 | Rod-Upper Crank |
| 18 | 62-1320 | 1 | Knob-Control |
| 19 | 3290-320 | 1 | Nut-Push |
| 20 | 62-1520 | 1 | Cover-Knob |
| 21 | 63-8360 | 1 | Key-Ignition |
| 22 | 40-5940 | 1 | Switch-Key |

| Ref. No. | Part No. | Qty. | Description |
|----------|----------|------|-------------------------------|
| 23 | 3234-13 | 2 | Screw-HHF |
| 24 | 32151-73 | 2 | Ring-Clip |
| 25 | 3256-23 | 2 | Washer-Flat |
| 26 | 63-3640 | 2 | Handle-Control |
| 27 | 74-1360 | 2 | Grip-Handle |
| 28 | 47-4990 | 2 | Post-Linkage Mount |
| 29 | 52-5600 | 2 | Pin-Control Lever |
| 30 | 94-8838 | 1 | Rod-Auger Engage (Upper) |
| 31 | 3296-42 | 6 | Nut-Lock |
| 32 | 43-7390 | 1 | Wire Harness |
| 33 | 94-8837 | 1 | Rod-Traction (Upper) |
| 34 | 32128-33 | 1 | Nut-Hex Flange |
| 35 | 94-8836 | 2 | Rod-Lower Traction |
| 36 | 32128-32 | 2 | Nut-Hex Flange |
| 37 | 38-4520 | 1 | Spring-Compression |
| 38 | 321-9 | 6 | Screw-HH |
| 39 | 94-8839 | 1 | Bracket-Chute Crank Upper |
| 40 | 94-8805 | 1 | Handle-Left (Only On: 38083) |
| 40 | 94-8873 | 1 | Handle-Left (Only On: 38084) |
| 41 | 94-8804 | 1 | Handle-Right (Only On: 38083) |

Engine Tecumseh Model # HMSK80-155386V



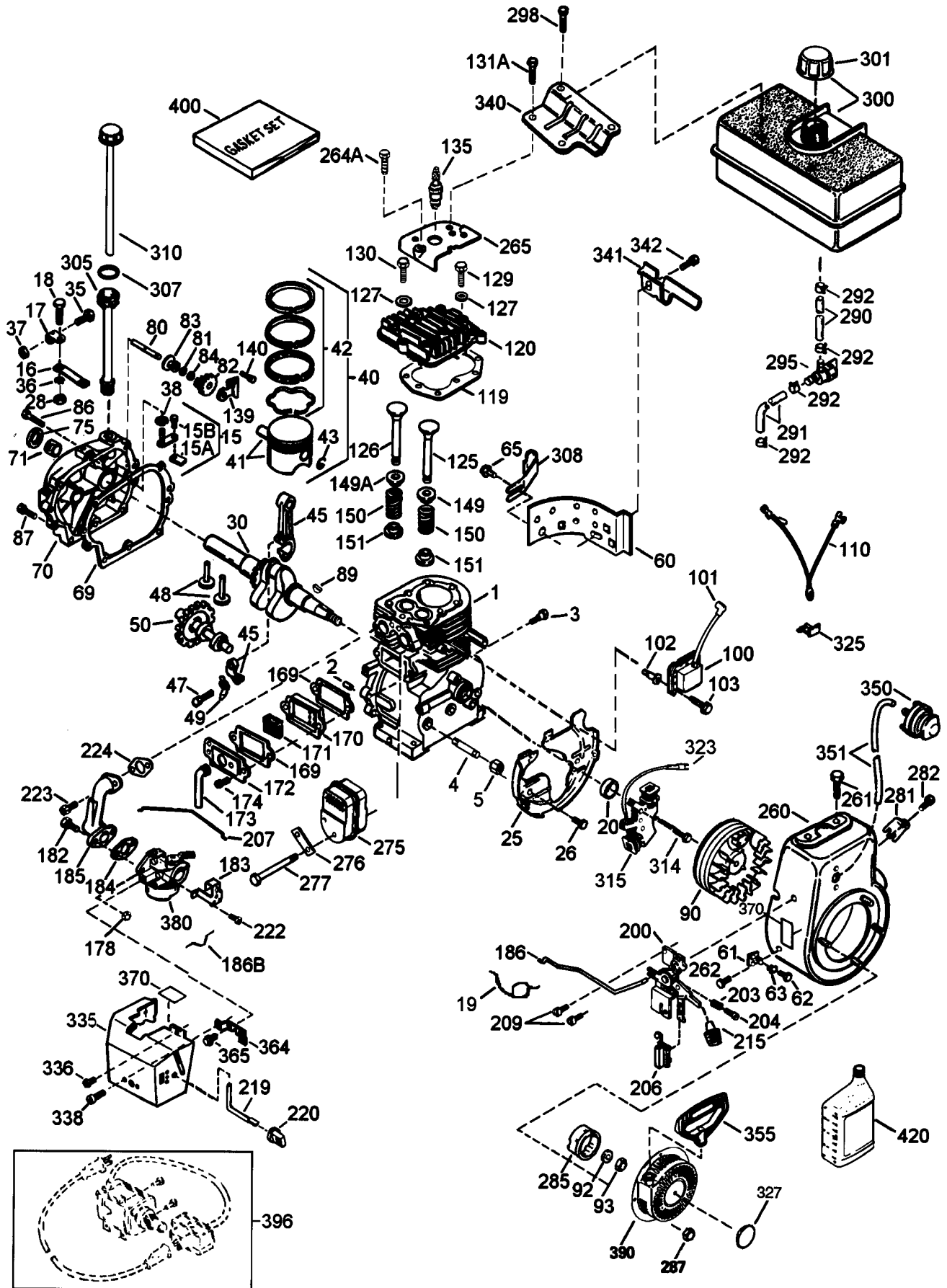
Engine Tecumseh Model # HMSK80-155386V

| Ref. No. | Part No. | Description | No. Used |
|----------|----------|---|----------|
| 1 | 35385 | Cylinder Asm (Incl. Ref. #2, 20, & 72) | 1 |
| 2 | 27652 | Dowel Pin | 2 |
| 3 | 650820 | Screw | 2 |
| 4 | 34171 | Oil Drain Extension | 1 |
| 5 | 30969 | Extension Cap | 1 |
| 15 | 30699C | Governor (Incl. Ref. #15A & 15B) | 1 |
| 15A | 30700 | Governor Yoke | 1 |
| 15B | 650494 | Screw | 1 |
| 16 | 33454 | Governor Lever | 1 |
| 17 | 29916 | Governor Lever Clamp | 1 |
| 18 | 651028 | Screw | 1 |
| 19 | 34663 | Spring - Speed Control | 1 |
| 20 | 35319 | Oil Seal | 1 |
| 25 | 36460 | Blower Housing Baffle | 1 |
| 26 | 650561 | Screw | 2 |
| 28 | 30322 | Lock Nut | 1 |
| 30 | 35571A | Crankshaft | 1 |
| 35 | 29826 | Screw | 1 |
| 36 | 29918 | Lock Washer | 1 |
| 37 | 29216 | Lock Nut | 1 |
| 38 | 29642 | Retaining Ring | 1 |
| 40 | 40011 | Piston, Pin & Ring Set (Std.) | 1 |
| 40 | 40012 | Piston, Pin & Ring Set (.010" OS) | 1 |
| 41 | 40009 | Piston & Pin Asm (Std.) (Incl. Ref. #43) | 1 |
| 41 | 40010 | Piston & Pin Asm (.010" OS) (Incl. Ref. #43) | 1 |
| 42 | 40013 | Ring Set (Std.) | 1 |
| 42 | 40014 | Ring Set (.010" OS) | 1 |
| 43 | 27888 | Piston Pin Retaining Ring | 2 |
| 45 | 36897 | Connecting Rod Asm (Incl. Ref. #47, & 49) | 1 |
| 47 | 651033 | Connecting Rod Bolt | 2 |
| 48 | 34034 | Valve Lifter | 2 |
| 49 | 36896 | Oil Dipper | 1 |
| 50 | 35375 | Camshaft (MCR) | 1 |
| 60 | 33273A | Blower Housing Extension | 1 |
| 61 | 34126 | Grommet Mounting Bracket | 1 |
| 62 | 650760 | Screw | 1 |
| 63 | 28545 | Grommet | 1 |
| 65 | 650128 | Screw | 1 |
| *69 | 35262A | Cylinder Cover Gasket | 1 |
| 70 | 35376 | Cylinder Cover (Incl. Ref. #71, 75, & 80) | 1 |
| 72 | 27642 | Oil Drain Plug | 1 |
| 71 | 35377 | Crankshaft Bushing | 1 |
| 75 | 35319 | Oil Seal | 1 |
| 80 | 31845 | Governor shaft | 1 |
| 81 | 30590A | Washer | 1 |

| Ref. No. | Part No. | Description | No. Used |
|----------|----------|---|----------|
| 82 | 35378 | Governor Gear Asm (Incl. Ref. #81) | 1 |
| 83 | 30588A | Governor Spool | 1 |
| 84 | 29193 | Retaining Ring | 1 |
| 86 | 650833 | Screw | 7 |
| 87 | 650832 | Screw | 1 |
| 89 | 32589 | Flywheel Key | 1 |
| 90 | 611093 | Flywheel (W/Ring Gear) | 1 |
| 92 | 650880 | Lock Washer | 1 |
| 93 | 650881 | Flywheel Nut | 1 |
| 100 | 35135 | Solid State Ignition | 1 |
| 101 | 610118 | Spark Plug Cover | 1 |
| 102 | 651024 | Solid State Mounting Stud | 2 |
| 103 | 651007 | Screw, Torx T-15 | 2 |
| 110 | 35253 | Ground Wire | 1 |
| *119 | 36448 | Cylinder Head Gasket | 1 |
| 120 | 36449 | Cylinder Head | 1 |
| 125 | 27878A | Exhaust Valve (Std.) (Incl. Ref. #151) | 1 |
| 125 | 27880A | Exhaust valve (1/32" OS) (Incl. Ref. #151) | 1 |
| 126 | 34035 | Intake Valve (Std.) (Incl. Ref. #151) | 1 |
| 126 | 34036 | Intake Valve (1/32" OS) (Incl. Ref. #151) | 1 |
| 127 | 650691 | Washer | 2 |
| 129 | 650727 | Screw | 2 |
| 130 | 6021A | Screw | 7 |
| 131A | 650713 | Screw | 2 |
| 135 | 35395 | Resistor Spark Plug (RJ19LM) | 1 |
| 139 | 33369 | Governor Gear Bracket | 1 |
| 140 | 650836 | Screw | 2 |
| 149 | 27882 | Valve Spring Cap | 1 |
| 149A | 35862 | Valve Spring Cap | 1 |
| 150 | 27881 | Valve Spring | 2 |
| 151 | 32581 | Valve Spring Keeper | 2 |
| *169 | 27896A | Valve Cover Gasket | 2 |
| 170 | 28423 | Breather Body | 1 |
| 171 | 28424 | Breather Element | 1 |
| 172 | 28425 | Valve Cover | 1 |
| 173 | 35350 | Breather Tube | 1 |
| 174 | 650128 | Screw | 2 |
| 178 | 29752 | Nut & Lock Washer | 2 |
| 182 | 30088A | Screw | 2 |
| 183 | 34587A | Choke Bracket | 1 |
| *184 | 33263 | Carburetor To Intake Pipe Gasket | 1 |
| 185 | 33877 | Intake Pipe | 1 |
| 186 | 34667 | Governor Link | 1 |
| 186B | 36652 | Spring - Choke | 1 |

*Included in Gasket Set 36450

Engine Tecumseh Model # HMSK80-155386V (Cont.)

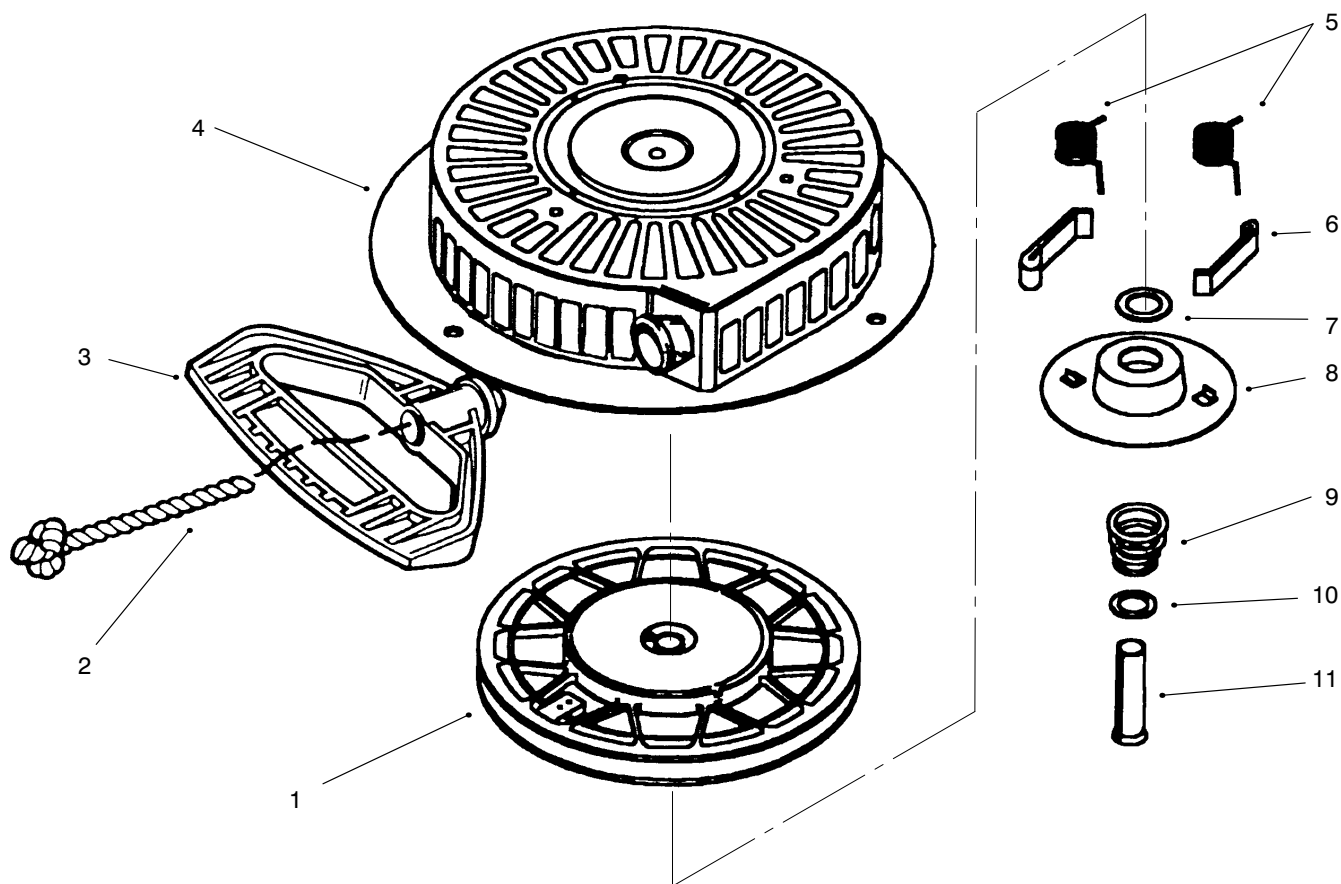


Engine Tecumseh Model # HMSK80-155386V (Cont.)

| Ref. No. | Part No. | Description | No. Used |
|----------|----------|--|----------|
| 200 | 34677 | Control Bracket (Incl. Ref. #19, 203, 204 & 206) | 1 |
| 203 | 31342 | Compression Spring | 1 |
| 204 | 651029 | Screw | 1 |
| 206 | 610973 | Terminal | 1 |
| 207 | 33878 | Throttle Link | 1 |
| 209 | 650821 | Screw | 2 |
| 215 | 35440 | Control Knob | 1 |
| 219 | 34586 | Choke rod | 1 |
| 220 | 35438 | Choke Knob | 1 |
| 222 | 28820 | Screw | 2 |
| 223 | 650378 | Screw, Torx T-30 | 2 |
| *224 | 27915A | Intake Pipe Gasket | 1 |
| 260 | 35447A | Blower Housing | 1 |
| 261 | 650788 | Screw | 2 |
| 262 | 29747B | Screw, Torx T-40 | 2 |
| 264A | 650802 | Screw | 1 |
| 265 | 33272B | Cylinder Head Cover | 1 |
| 275 | 35056 | Muffler | 1 |
| 276 | 31588 | Locking Plate | 1 |
| 277 | 651002 | Screw | 2 |
| 281 | 33013 | Starter bubble Cover | 1 |
| 282 | 650760 | Screw | 1 |
| 285 | 35985B | Starter Cup | 1 |
| 287 | 29752 | Nut & Lock Washer | 4 |
| 290 | 29774 | Fuel Line | 1 |
| 291 | 30705 | Fuel Line | 1 |
| 292 | 26460 | Fuel Line Clamp | 4 |
| 295 | 35857 | Fuel shut-Off Valve | 1 |
| 298 | 650665 | Screw | 2 |

| Ref. No. | Part No. | Description | No. Used |
|----------|----------|--|----------|
| 300 | 34156A | Fuel Tank (Incl. Ref. #292 & 301) | 1 |
| 301 | 36246 | Fuel Cap | 1 |
| 305 | 35554 | Oil fill Tube | 1 |
| 307 | 35499 | "O" Ring | 1 |
| 308 | 35540 | Fill Tube Clip | 1 |
| 310 | 36205 | Dipstick | 1 |
| 314 | 650873 | Screw | 1 |
| 315 | 611111 | Alternator Coil (18 Watt) (Incl. Ref. #323) | 1 |
| 323 | 611118 | Terminal | 1 |
| 325 | 29443 | Wire Clip | 1 |
| 327 | 35392 | Starter Plug | 1 |
| 335 | 35057A | Carburetor Cover | 1 |
| 336 | 650765 | Screw | 1 |
| 338 | 28942 | Screw | 2 |
| 340 | 34155 | Fuel Tank Bracket | 1 |
| 341 | 34154 | Fuel Tank Bracket | 1 |
| 342 | 650561 | Screw | 1 |
| 350 | 570682 | Primer Bulb | 1 |
| 351 | 32180C | Primer Line | 1 |
| 355 | 590574 | Starter Handle | 1 |
| 364 | 33377 | Carburetor Cover Bracket | 1 |
| 365 | 650767 | Screw | 2 |
| 370 | 36261 | Identification Decal | 1 |
| 380 | 640052 | Carburetor (Incl. Ref. #184) | 1 |
| 390 | 590733 | Rewind Starter | 1 |
| 396 | 33329D | Electric Starter Motor, 120 Volt (Optional) | 1 |
| 400 | 36450A | Gasket Set | 1 |
| 420 | 730226 | SAE 5W30 4-Cyc. Eng. Oil | 1 |

*Included in Gasket Set 36450

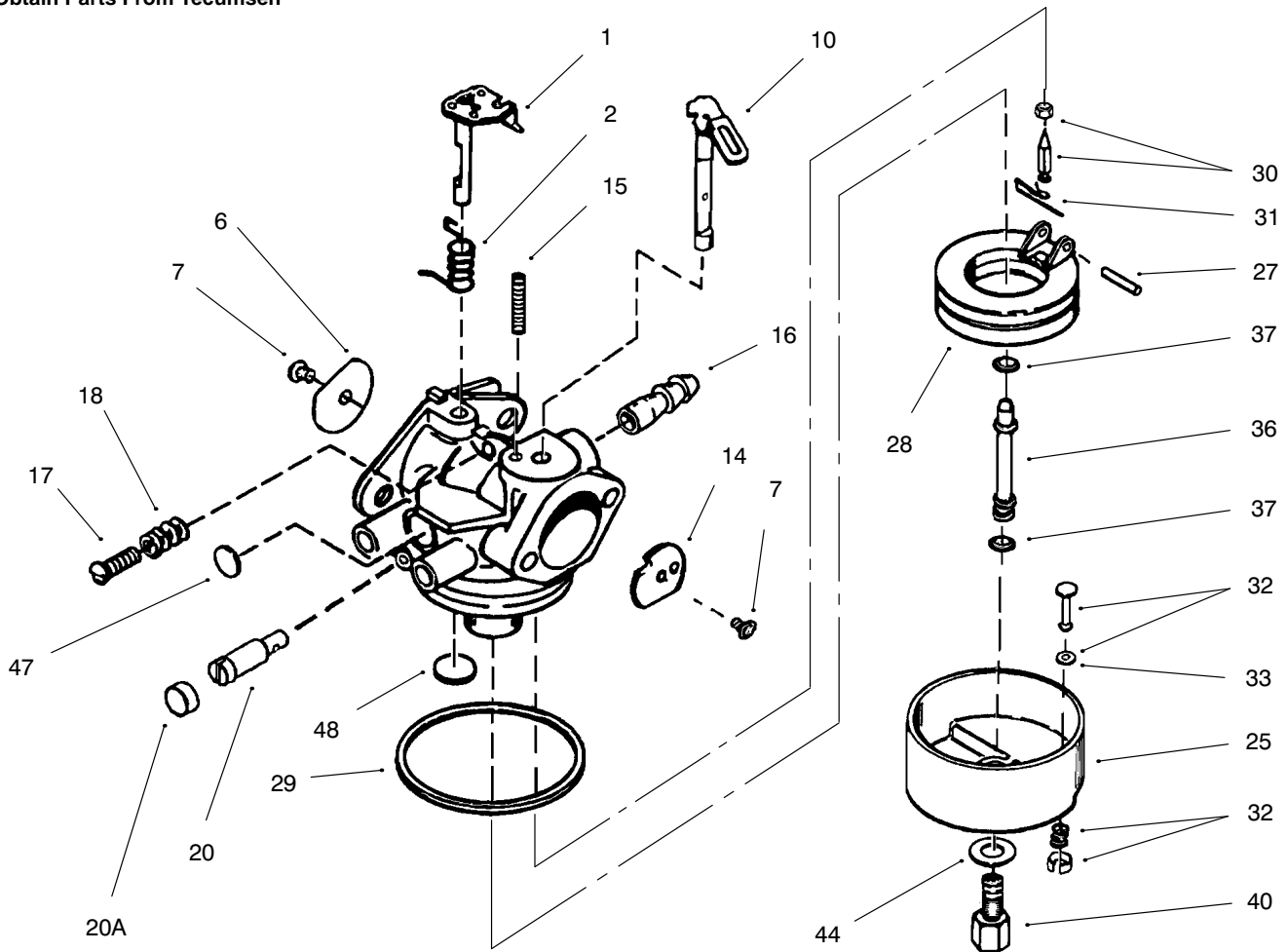


Recoil Starter Tecumseh # 590733

| Ref. No. | Part No. | Description | No. Used |
|----------|----------|---------------------------------|----------|
| 1 | 590709 | Pulley & Rewind Spring Assembly | 1 |
| 2 | 590535 | Rope - Starter | 1 |
| ‡3 | 590574 | Handle - Mitten Grip | 1 |
| 4 | 590734 | Starter Housing Asm | 1 |
| 5 | 590699 | Spring - Dog | 2 |
| 6 | 590698 | Dog - Starter | 2 |

| Ref. No. | Part No. | Description | No. Used |
|----------|----------|---------------------------------|----------|
| 7 | 590601 | Washer | 1 |
| 8 | 590696 | Retainer | 1 |
| 9 | 590697 | Spring - Brake | 1 |
| 10 | 590600 | Washer | 1 |
| 11 | 590599A | Pin - Spring (Incl. Ref. #7) | 1 |

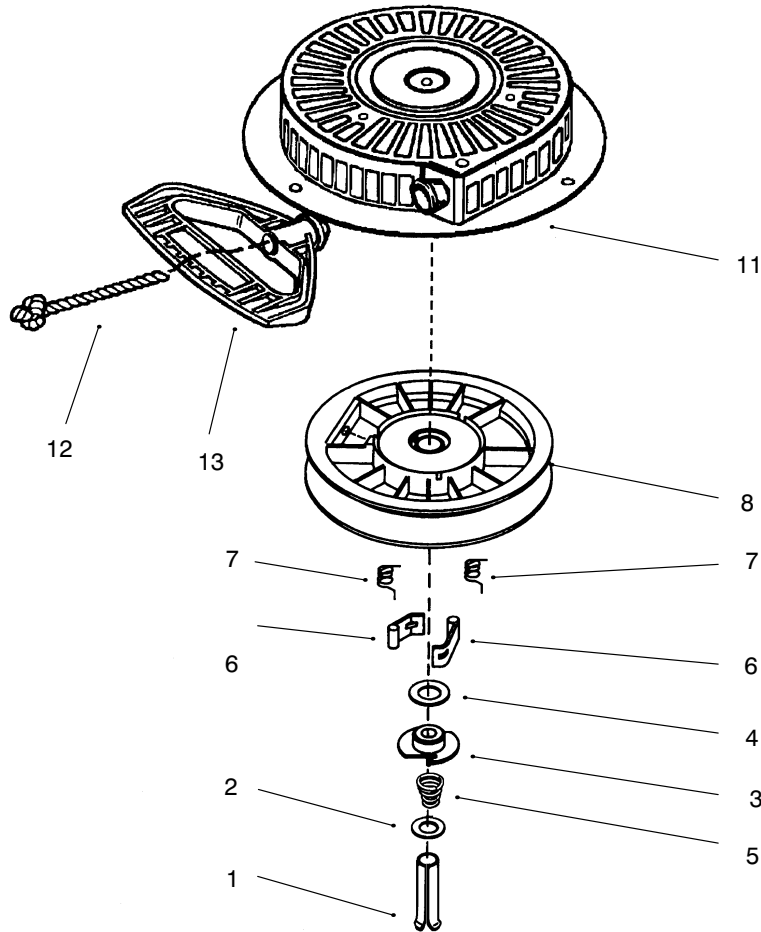
‡Not Included in Starter Assembly.



Carburetor Tecumseh # 640052

| Ref. No. | Part No. | Description | No. Used |
|----------|----------|--|----------|
| 1 | 631776A | Shaft/Lever – Throttle | 1 |
| 2 | 631970 | Spring – Throttle Return | 1 |
| 6 | 631778 | Shutter – Throttle | 1 |
| 7 | 650506 | Screw – Shutter | 2 |
| 10 | 632112 | Shaft/Lever – Choke | 1 |
| 14 | 632174 | Shutter – Choke | 1 |
| 15 | 630735 | Spring – Choke Positioning | 1 |
| 16 | 632164 | Fitting – Fuel Inlet | 1 |
| 17 | 650417 | Screw – Idle Regulating | 1 |
| 18 | 630766 | Spring – Tension | 1 |
| 20 | 640016 | Screw – Idle Adjustment | 1 |
| 21 | 640053 | Cap – Screw Idler Adj. | 1 |
| 25 | 631951 | Float Bowl Assembly (Incl. Ref. #32 & 33) | 1 |
| 27 | 631024 | Shaft – Float | 1 |

| Ref. No. | Part No. | Description | No. Used |
|----------|----------|---|----------|
| 28 | 632019 | Float – Carburetor | 1 |
| 29 | 631028 | Gasket – Bowl to Body | 1 |
| 30 | 631021 | Inlet Needle, Seat & Clip Asm (Incl. Ref. #31) | 1 |
| 31 | 631022 | Clip – Inlet Needle | 1 |
| 32 | 27136A | Drain Assembly (Incl. Ref. #33) | 1 |
| 33 | 27554 | Gasket – Bowl Drain | 1 |
| 36 | 640005 | Main Nozzle Tube | 1 |
| 37 | 632547 | O-Ring–Main Nozzle Tube | 2 |
| 40 | 640055 | High Speed Bowl Nut | 1 |
| 44 | 27110 | Gasket – Bowl to Body | 1 |
| 47 | 630748 | Plug – Welch | 1 |
| 48 | 631027 | Plug – Welch | 1 |

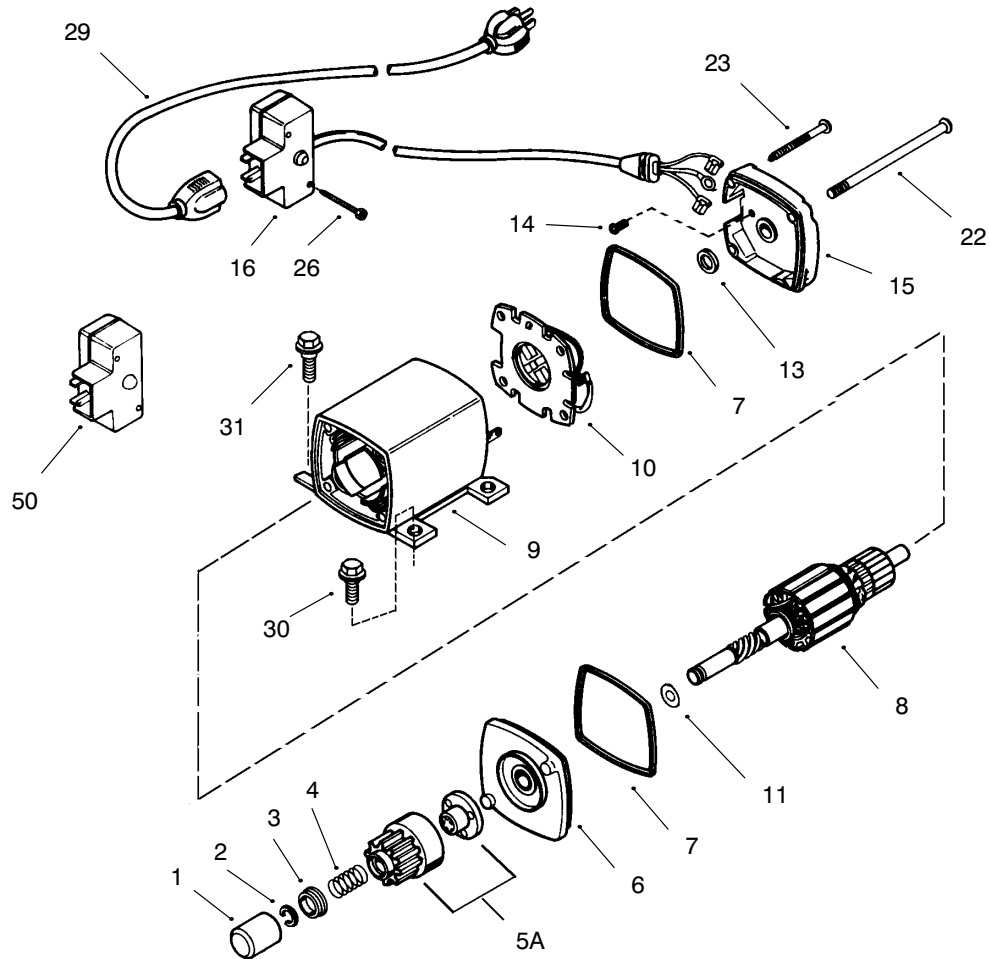


Recoil Starter # 590749 (Optional)

| Ref. No. | Part No. | Description | No. Used |
|----------|----------|---------------------------------|----------|
| 1 | 590599A | Pin – Spring (Incl. Ref. #4) | 1 |
| 2 | 590600 | Washer | 1 |
| 3 | 590679 | Retainer | 1 |
| 4 | 590601 | Washer | 1 |
| 5 | 590678 | Spring – Brake | 1 |
| 6 | 590680 | Dog – Starter | 2 |

| Ref. No. | Part No. | Description | No. Used |
|----------|----------|------------------------------------|----------|
| 7 | 590412 | Spring – Dog | 2 |
| 8 | 590682 | Pulley & Rewind Spring Assembly | 1 |
| 11 | 590750 | Starter Housing Asm | 1 |
| 12 | 590535 | Rope – Starter | 1 |
| ‡3 | 590574 | Handle – Mitten Grip | 1 |

‡ Not Included with Starter



ELECTRIC STARTER NO. 33329D (OPTIONAL)

| Ref. No. | Part No. | Description | No. Used |
|----------|----------|---------------------------------------|----------|
| 1 | 33451 | Dust Cover | 1 |
| 2 | 33842 | Retainer Ring | 1 |
| 3 | 33430 | Spring Retainer | 1 |
| 4 | 33431 | Anti-drift Spring | 1 |
| 5A | 37050 | Gear and Nut (Incl. Ref.# 2) | 1 |
| 6 | 35449 | Drive End Cap Asm. (Incl. Ref.# 7) | 1 |
| 7 | 35450 | O-Ring | 2 |
| 8 | 35915 | Armature | 1 |
| 9 | 35451A | Housing Assembly | 1 |
| 10 | 35452A | Brush Card Assembly | 1 |
| 11 | 35911 | Thrust Washer | 1 |

| Ref. No. | Part No. | Description | No. Used |
|----------|----------|--|----------|
| 13 | 590500 | Thrust Washer | 1 |
| 14 | 33441 | Ground Screw | 1 |
| 15 | 35453 | Commutator End Cap Asm. (Incl. Ref.# 7) | 1 |
| 16 | 35454 | Switch Box Assembly (Incl. Ref# 26) | 1 |
| 22 | 35455 | Case Bolt | 2 |
| 23 | 35456 | Ground Screw | 1 |
| 26 | 650819 | Screw | 2 |
| 29 | 32450A | Extension Cord | 1 |
| 30 | 30063 | Screw - Torx | 2 |
| 31 | 650820 | Screw | 2 |
| 50 | 730623 | Switch Repair Kit | 1 |

Toro Part Number Index

| Part No. | Page No. | Ref. No. | Qty. | Description |
|-----------|----------|----------|------|------------------------------------|
| 110656 | 7 | 10 | 1 | Trunnion |
| 612586 | 7 | 16 | 4 | Washer-Spring |
| 9202594 | 4 | 36 | 1 | Washer |
| 3-0750 | 1 | 3 | 2 | Washer-Retaining |
| 3-4244 | 4 | 11 | 2 | Pulley-Idler |
| 3-6498 | 5 | 28 | 2 | Washer-Thrust |
| 3-8664 | 5 | 20 | 2 | Washer-Thrust |
| 5-9820 | 4 | 23 | 1 | Sprocket 8t |
| 7-0045 | 3 | 1:3 | 1 | Seal-Oil |
| 7-0045 | 3 | 5:3 | 1 | Seal-Oil |
| 7-3590 | 5 | 5 | 1 | Washer |
| 20-0980 | 2 | 49 | 2 | Bearing-Auger |
| 20-0990 | 2 | 48 | 2 | Bearing-Flange |
| 20-1000 | 2 | 50 | 2 | Bearing-Flange |
| 20-1810 | 4 | 22 | 1 | Chain w/Link |
| 25-5090 | 2 | 47 | 2 | Spacer-Auger Hub |
| 26-6110 | 1 | 30 | 1 | Bearing-Flange |
| 26-6120 | 1 | 32 | 1 | Bearing-Flange |
| 37-6560 | 3 | 12 | 1 | Bushing-Input |
| 37-6850 | 5 | 27 | 2 | Bearing-Axle |
| 37-915001 | 7 | 12 | 1 | Spring |
| 38-4520 | 7 | 37 | 1 | Spring-Compression |
| 40-5940 | 7 | 22 | 1 | Switch-Key |
| 40-8130 | 7 | 13 | 1 | Spacer-Speed Selector |
| 40-8170 | 4 | 16 | 1 | Friction Wheel |
| 43-7390 | 7 | 32 | 1 | Wire Harness |
| 47-4990 | 7 | 28 | 2 | Post-Linkage Mount |
| 52-2861 | 1 | 35 | 4 | Washer |
| 52-5600 | 7 | 29 | 2 | Pin-Control Lever |
| 53-7570 | 4 | 9 | 1 | Spring-Auger Disengage |
| 53-7670 | 1 | 7 | 1 | Decal-Warning (Only On: 38083) |
| 62-0120 | 3 | 4 | 1 | Gear-Helical |
| 62-0820 | 1 | 24 | 1 | Gear-Worm |
| 62-0920 | 6 | 11 | 1 | Sheave-Half |
| 62-0940 | 6 | 7 | 1 | Sheave-Half |
| 62-1150 | 3 | 13 | 1 | Bushing-Worm |
| 62-1300 | 1 | 28 | 1 | Pulley-Impeller |
| 62-1320 | 7 | 18 | 1 | Knob-Control |
| 62-1430 | 1 | 18 | 3 | Retainer-Chute |
| 62-1520 | 7 | 20 | 1 | Cover-Knob |
| 62-1530 | 3 | 6 | 1 | Shaft-Auger |
| 63-2180 | 1 | 21 | 1 | Bracket-Worm |
| 63-2410 | 6 | 19 | 1 | Decal-Choke |
| 63-2670 | 1 | 19 | 3 | Plate-Retainer |
| 63-2750 | 2 | 45 | 1 | Auger-RH (Only On: 38083) |
| 63-2760 | 2 | 46 | 1 | Auger-LH (Only On: 38083) |
| 63-2900 | 1 | 14 | 2 | Washer-Plastic |
| 63-3020 | 1 | 10 | 1 | Guard-Chute |
| 63-3130 | 1 | 8 | 1 | Clip-Guard |
| 63-3190 | 6 | 18 | 1 | Decal-Throttle |
| 63-3450 | 1 | 31 | 1 | Bearing-Ball |
| 63-3640 | 7 | 26 | 2 | Handle-Control |
| 63-8360 | 7 | 21 | 1 | Key-Ignition |
| 66-6840 | 6 | 21 | 1 | Decal-Hot Surface (Only On: 38083) |
| 66-7762 | 1 | 38 | 1 | Blade-Scraper |
| 66-7811 | 3 | 10 | 1 | Shaft-Impeller |
| 66-7821 | 1 | 5 | 1 | Plate-Side |
| 66-7831 | 1 | 34 | 1 | Plate-Side |
| 66-7910 | 1 | 40 | 1 | Impeller |
| 66-8010 | 2 | 42 | 2 | Spacer |
| 66-8060 | 4 | 14 | 1 | ASM-Brake |
| 68-2970 | 5 | 22 | 2 | Bearing-Triangle 3/4" |

*Not Illustrated

Toro Part Number Index (cont.)

| Part No. | Page No. | Ref. No. | Qty. | Description |
|----------|----------|----------|------|---|
| 68-7450 | 2 | 45 | 1 | Auger-RH (Only On: 38084) |
| 68-7460 | 2 | 46 | 1 | Auger-LH (Only On: 38084) |
| 74-1360 | 7 | 27 | 2 | Grip-Handle |
| 74-1440 | 1 | 36 | 2 | Skid |
| 74-1560 | 2 | 44 | 1 | ASM-Gearcase |
| 74-1570 | 3 | 1 | 1 | Gearcase ASM LH |
| 74-1580 | 3 | 5 | 1 | Gearcase ASM RH |
| 87-7270 | 4 | 24 | 1 | Washer-Hardened |
| 93-1265 | 6 | 21 | 1 | Decal-Hot Surface (Only On: 38084) |
| 93-8032 | 7 | 15 | 1 | Decal-Control Panel Back (Only On: 38084) |
| 93-8033 | 7 | 15 | 1 | Decal-Control Panel Back (Only On: 38083) |
| 93-8034 | 8 | 43 | 1 | Decal-Control Panel |
| 93-8038 | 6 | 14 | 2 | Washer-Flat (Only On: 38084) |
| 93-8039 | 6 | 15 | 2 | Washer-Lock (Only On: 38084) |
| 93-8048 | 6 | 16 | 2 | Screw-Self Drilling (Only On: 38084) |
| 94-2558 | 1 | 23 | 1 | Decal-Danger (Only On: 38084) |
| 94-2568 | 1 | 7 | 1 | Decal-Warning (Only On: 38084) |
| 94-2572 | 6 | 17 | 1 | Decal-Primer |
| 94-2763 | 6 | 13 | 1 | Guard-Muffler (Only On: 38084) |
| 94-2782 | 6 | 44 | 1 | Cap-Wire |
| 94-8079 | 1 | 23 | 1 | Decal-Danger (Only On: 38083) |
| 94-8802 | 6 | 29 | 1 | Cover-Belt |
| 94-8803 | 6 | 8 | 1 | Belt-Impeller |
| 94-8804 | 7 | 41 | 1 | Handle-Right (Only On: 38083) |
| 94-8805 | 7 | 40 | 1 | Handle-Left (Only On: 38083) |
| 94-8806 | 7 | 8 | 1 | Speed Selector |
| 94-8807 | 7 | 5 | 1 | Mount-Speed Selector |
| 94-8808 | 7 | 14 | 1 | Panel-Control |
| 94-8809 | 8 | 52 | 1 | Rod-Lower Crank |
| 94-8810 | 7 | 17 | 1 | Rod-Upper Crank |
| 94-8812 | 6 | 10 | 1 | Belt-Traction |
| 94-8813 | 5 | 18 | 1 | Spring-Engage |
| 94-8814 | 5 | 4 | 1 | Shaft-Intermediate |
| 94-8816 | 4 | 15 | 1 | Shaft-Hex |
| 94-8818 | 5 | 16 | 1 | Rod-Traction (Inner) |
| 94-8821 | 4 | 31 | 1 | ASM-Shift Arm |
| 94-8822 | 5 | 9 | 1 | Bellcrank-Hub |
| 94-8823 | 5 | 26 | 1 | ASM-Pulley & Shaft |
| 94-8824 | 4 | 4 | 2 | Bearing-Triangle 1/2" |
| 94-8828 | 4 | 10 | 1 | Auger Clutch Rod |
| 94-8829 | 4 | 7 | 1 | Mounting-Bracket |
| 94-8833 | 5 | 17 | 1 | Frame-Friction Plate |
| 94-8834 | 8 | 49 | 1 | Rod-Clevis |
| 94-8836 | 7 | 35 | 2 | Rod-Lower Traction |
| 94-8837 | 7 | 33 | 1 | Rod-Traction (Upper) |
| 94-8838 | 7 | 30 | 1 | Rod-Auger Engage (Upper) |
| 94-8839 | 7 | 39 | 1 | Bracket-Chute Crank Upper |
| 94-8840 | 8 | 54 | 1 | Bracket-Crank Rod Lower |
| 94-8841 | 4 | 13 | 1 | Mtg-Clutch |
| 94-8842 | 6 | 23 | 1 | Plate-Back |
| 94-8844 | 6 | 27 | 1 | Cover-Lower Traction |
| 94-8845 | 5 | 15 | 1 | ASM-Bearing/Hub |
| 94-8849 | 6 | 9 | 1 | Pulley-Engine |
| 94-8850 | 4 | 25 | 1 | Key-Square |
| 94-8851 | 4 | 30 | 1 | ASM-Brace/Stud |
| 94-8852 | 4 | 2 | 1 | Frame |
| 94-8855 | 5 | 19 | 1 | Axle |
| 94-8856 | 5 | 6 | 1 | ASM-Gear & Bushing |
| 94-8857 | 5 | 14 | 1 | Plate-Friction |
| 94-8859 | 4 | 32 | 2 | Shoulder Bolt |
| 94-8859 | 5 | 8 | 1 | Shoulder Bolt |
| 94-8862 | 4 | 21 | 1 | Spacer Stop |

*Not Illustrated

Toro Part Number Index (cont.)

| Part No. | Page No. | Ref. No. | Qty. | Description |
|----------|----------|----------|------|--------------------------------|
| 94-8864 | 4 | 34 | 1 | Idler-Bracket/Hub |
| 94-8867 | 8 | 50 | 2 | Block-Pivot |
| 94-8868 | 8 | 51 | 2 | Mount-Clevis |
| 94-8870 | 4 | 33 | 1 | Spring-Extension Idler |
| 94-8871 | 5 | 6:2 | 2 | Bushing (Only On: 38083) |
| 94-8872 | 8 | 41 | 1 | Handle-,Right (Only On: 38084) |
| 94-8873 | 7 | 40 | 1 | Handle-Left (Only On: 38084) |
| 94-8883 | 4 | 19 | 1 | ASM-Slider Ring |
| 94-9875 | 7 | 4 | 1 | Rod-Shift |
| 95-2661 | 1 | 15 | 1 | ASM-Chute (Only On: 38083) |
| 95-2662 | 1 | 15 | 1 | ASM-Chute (Only On: 38084) |
| 95-2663 | 1 | 22 | 1 | ASM-Housing (Only On: 38083) |
| 95-2664 | 1 | 22 | 1 | ASM-Housing (Only On: 38084) |
| 95-7907 | 6 | 12 | 1 | Engine-Tecumseh |
| 95-7917 | 6 | 4 | 1 | Guide-Belt |
| 95-7931 | 4 | 17 | 1 | Hub-Traction Disc |
| 98-2252 | 4 | 37 | 1 | Washer - Thrust |
| 231-120 | 5 | 2:1 | 2 | Tire |
| 232-46 | 5 | 2:3 | 2 | Tube |
| 233-21 | 7 | 9 | 1 | Knob |
| 241-131 | 5 | 2:2 | 2 | Rim |
| 252-71 | 3 | 2 | 2 | Washer-Thrust |
| 252-76 | 3 | 15 | 1 | Bearing-Thrust |
| 252-78 | 3 | 14 | 2 | Washer-Thrust |
| 252-80 | 1 | 25 | 1 | Washer-Thrust |
| 252-80 | 5 | 24 | 1 | Washer-Thrust |
| 253-149 | 3 | 11 | 1 | Seal-Oil |
| 256-237 | 3 | 1:2 | 1 | Bushing |
| 256-237 | 3 | 5:2 | 1 | Bushing |
| 256-249 | 8 | 42 | 1 | Grommet-Nyliner |
| 256-260 | 4 | 18 | 1 | Washer |
| 281-1 | 3 | 18 | 1 | Plug-Square Head Pipe |
| 288-2 | 6 | 50 | 1 | Cap-Pipe |
| 289-34 | 6 | 49 | 1 | Nipple-Pipe |
| 321-3 | 1 | 1 | 8 | Screw-HH |
| 321-9 | 7 | 38 | 6 | Screw-HH |
| 321-44 | 2 | 43 | 2 | Screw |
| 322-3 | 4 | 27 | 4 | Screw-HH |
| 322-7 | 8 | 44 | 1 | Screw-HH |
| 322-12 | 2 | 51 | 2 | Screw HH |
| 323-4 | 1 | 2 | 2 | Screw-HH |
| 323-4 | 4 | 1 | 4 | Screw-HH |
| 323-4 | 5 | 23 | 4 | Screw-HH |
| 323-29 | 4 | 12 | 1 | Screw-HH |
| 3210-3 | 6 | 1 | 2 | Screw-HH |
| 3212-8 | 6 | 5 | 1 | Screw-HH Cap |
| 3229-11 | 7 | 7 | 2 | Bolt-CARR |
| 3230-1 | 1 | 20 | 1 | Bolt-CARR |
| 3230-23 | 1 | 39 | 9 | Bolt-CARR |
| 3231-26 | 4 | 35 | 1 | Screw-CARR |
| 3234-5 | 1 | 37 | 4 | Screw-HHF |
| 3234-13 | 7 | 23 | 2 | Screw-HHF |
| 3234-28 | 1 | 6 | 12 | Screw-HHF |
| 3242-4 | 1 | 27 | 2 | Screw-Set |
| 3245-32 | 4 | 26 | 2 | Screw-Set |
| 3253-4 | 6 | 2 | 2 | Washer-Lock |
| 3253-6 | 6 | 6 | 1 | Washer-Lock |
| 3256-14 | 1 | 12 | 2 | Washer-Flat |
| 3256-22 | 8 | 55 | 2 | Washer-Flat |
| 3256-23 | 1 | 33 | 1 | Washer-Flat |
| 3256-23 | 6 | 3 | 2 | Washer-Flat |
| 3256-23 | 7 | 25 | 2 | Washer-Flat |

*Not Illustrated

Toro Part Number Index (cont.)

| Part No. | Page No. | Ref. No. | Qty. | Description |
|-----------|----------|----------|------|--------------------|
| 3256-24 | 4 | 6 | 1 | Washer-Flat |
| 3256-24 | 7 | 6 | 6 | Washer-Flat |
| 3256-38 | 7 | 3 | 1 | Washer-Flat |
| 3256-41 | 6 | 43 | 1 | Washer-Flat |
| 3256-61 | 1 | 16 | 1 | Washer-Flat |
| 3256-67 | 5 | 10 | 2 | Washer-Flat |
| 3257-10 | 3 | 9 | 1 | Key-Woodruff |
| 3257-23 | 1 | 26 | 1 | Key-Woodruff |
| 3272-4 | 5 | 11 | 2 | Pin-Cotter |
| 3272-4 | 7 | 2 | 2 | Pin-Cotter |
| 3272-9 | 8 | 45 | 1 | Cotter Pin |
| 3274-13 | 1 | 9 | 3 | Screw-HSH |
| 3290-243 | 5 | 1 | 2 | Pin-Lynch |
| 3290-320 | 4 | 5 | 1 | Nut-Push |
| 3290-320 | 7 | 19 | 1 | Nut-Push |
| 3290-326 | 1 | 11 | 2 | Nut-Push |
| 3290-456 | 8 | 48 | 4 | Washer-Lock |
| 3296-2 | 1 | 17 | 4 | Nut Lock |
| 3296-29 | 1 | 29 | 14 | Nut-Lock |
| 3296-39 | 4 | 29 | 4 | Nut-Lock |
| 3296-39 | 5 | 21 | 4 | Nut-Lock |
| 3296-42 | 2 | 41 | 10 | Nut-Lock |
| 3296-42 | 7 | 31 | 6 | Nut-Lock |
| 3296-47 | 1 | 4 | 12 | Nut-Lock |
| 3296-47 | 4 | 28 | 4 | Nut-Lock |
| 3296-59 | 4 | 8 | 4 | Nut-Lock |
| 3296-59 | 5 | 12 | 1 | Nut-Lock |
| 32121-9 | 5 | 3 | 4 | Pin-Roll |
| 32121-16 | 7 | 1 | 4 | Pin-Roll |
| 32121-50 | 8 | 46 | 2 | Pin-Roll |
| 32122-32 | 1 | 13 | 1 | Screw-TH |
| 32128-13 | 7 | 11 | 1 | Nut-Lock Flange |
| 32128-20 | 6 | 22 | 4 | Nut-Lock |
| 32128-32 | 7 | 36 | 2 | Nut-Hex Flange |
| 32128-33 | 7 | 34 | 1 | Nut-Hex Flange |
| 32144-4 | 4 | 3 | 6 | Screw-TAP |
| 32144-4 | 5 | 7 | 8 | Screw-TAP |
| 32144-4 | 6 | 20 | 12 | Screw-TAP |
| 32144-4 | 8 | 53 | 1 | Screw-TAP |
| 32144-14 | 5 | 13 | 2 | Screw-HWH |
| 32144-14 | 6 | 28 | 6 | Screw-HWH |
| 32144-14 | 8 | 47 | 4 | Screw-HWH |
| 32144-110 | 3 | 17 | 9 | Screw-HWHTF |
| 32151-33 | 3 | 16 | 1 | Ring-Snap |
| 32151-36 | 4 | 20 | 1 | Ring-Retaining Ext |
| 32151-73 | 7 | 24 | 2 | Ring-Clip |
| 32151-103 | 5 | 25 | 1 | Snap Ring |

