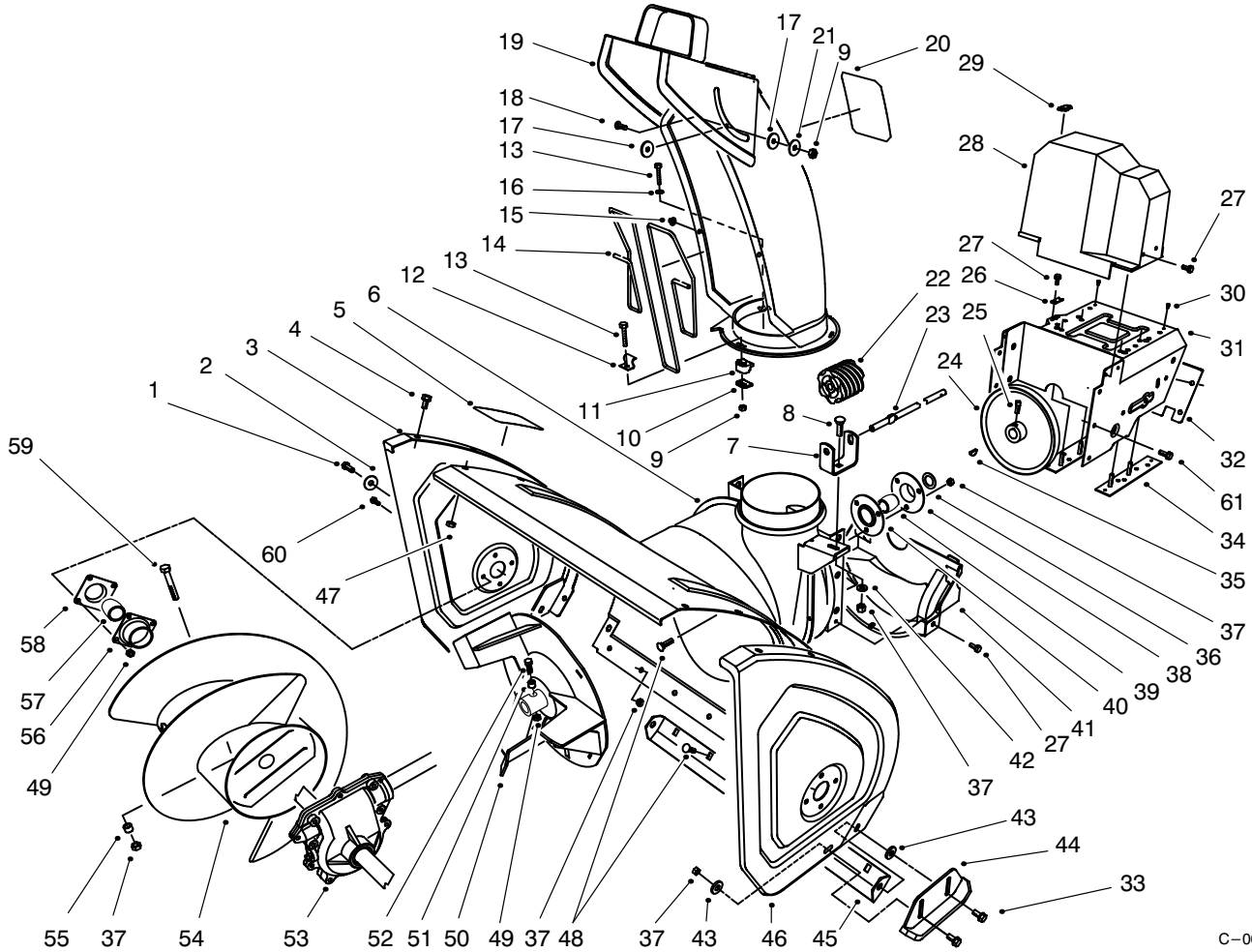




MODEL NO. 38555-890001 & UP
 MODEL NO. 38556-890001 & UP

**PARTS
 CATALOG**

**1028 POWER SHIFT®
 SNOWTHROWER**



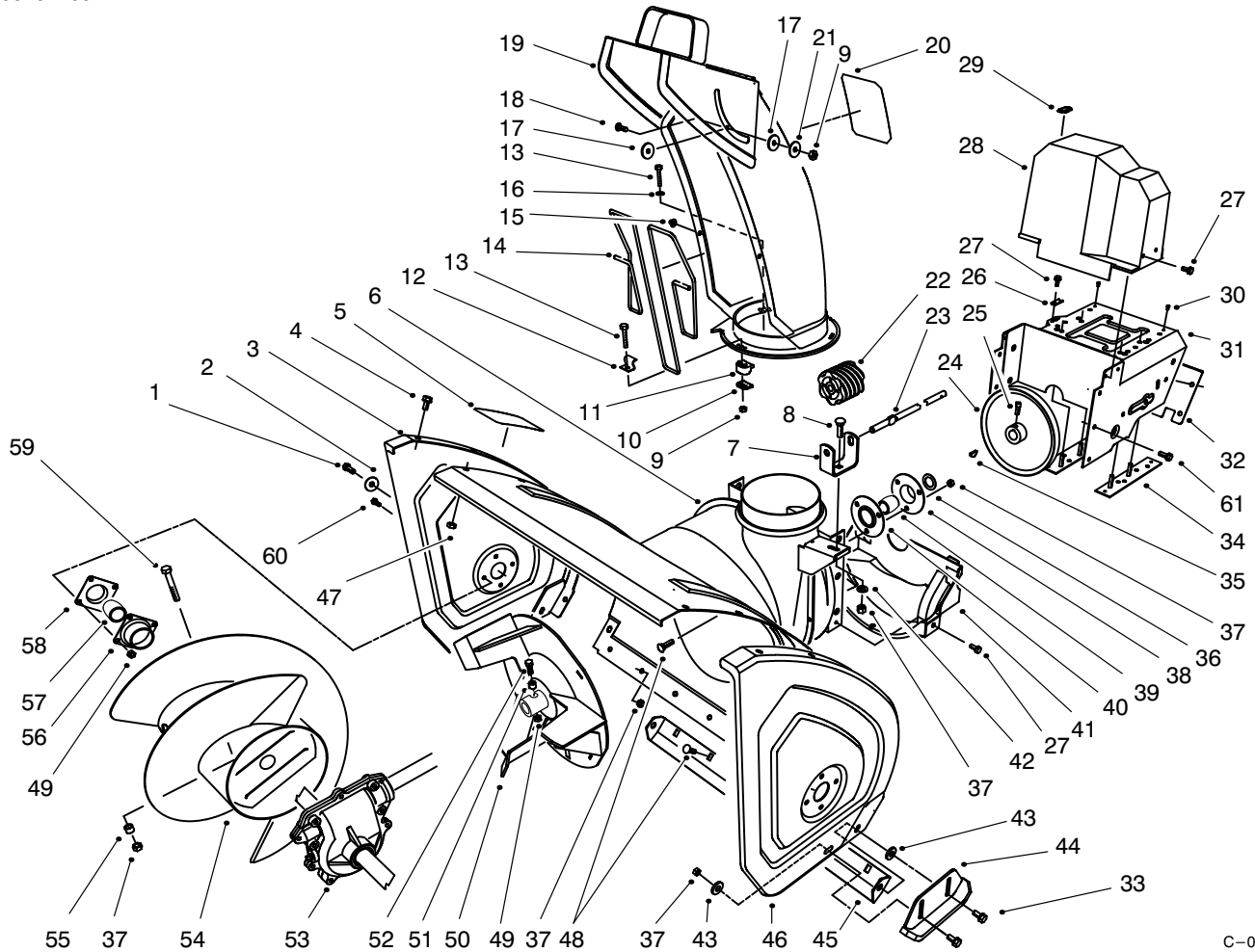
C-0045

HOUSING & CHUTE ASSEMBLY

Ref. No.	Part No.	Description	No. Used
1	323-4	Screw - Hex. Hd.	2
2	3-0750	Washer - Retaining	2
3	66-7821	Plate - Side R.H.	1
4	3234-28	Screw - Hex. Flange Hd.	12
5	53-7670	Decal - Danger Auger (Model 38556 Only)	1
*	94-2568	Decal - Danger Auger (Model 38555 Only)	1
6	62-0721	Housing - 28"	1
7	63-2180	Bracket - Gear	1
8	3230-2	Bolt - Carriage	1
9	3296-2	Nut - Lock	4
10	63-2670	Plate - Chute Retainer	3
11	62-1430	Retainer - Chute	3
12	63-3130	Clip - Chute Guard	1
13	3274-13	Screw - Machine	3
14	63-3020	Guard - Chute	1

Ref. No.	Part No.	Description	No. Used
15	3290-326	Nut - Push	2
16	3256-14	Washer - Flat	3
17	63-2900	Washer - Plastic	2
18	32122-32	Screw	1
19	62-0840	Chute Assembly	1
20	94-8079	Decal - Danger Chute (Model 38556 Only)	1
*	94-2559	Decal - Danger Chute (Model 38555 Only)	1
21	3256-61	Washer - Flat	1
22	62-0820	Gear - Worm	1
23	62-1720	Rod - Chute Gear	1
24	62-1300	Pulley - Impeller	1
25	3242-4	Screw - Set Sq. Hd.	2
26	63-2300	Retainer - Cable	1
27	32144-4	Screw - Hex. Flange Hd.	6
28	63-2080	Cover - Belt (Upper)	1

*Not Illustrated

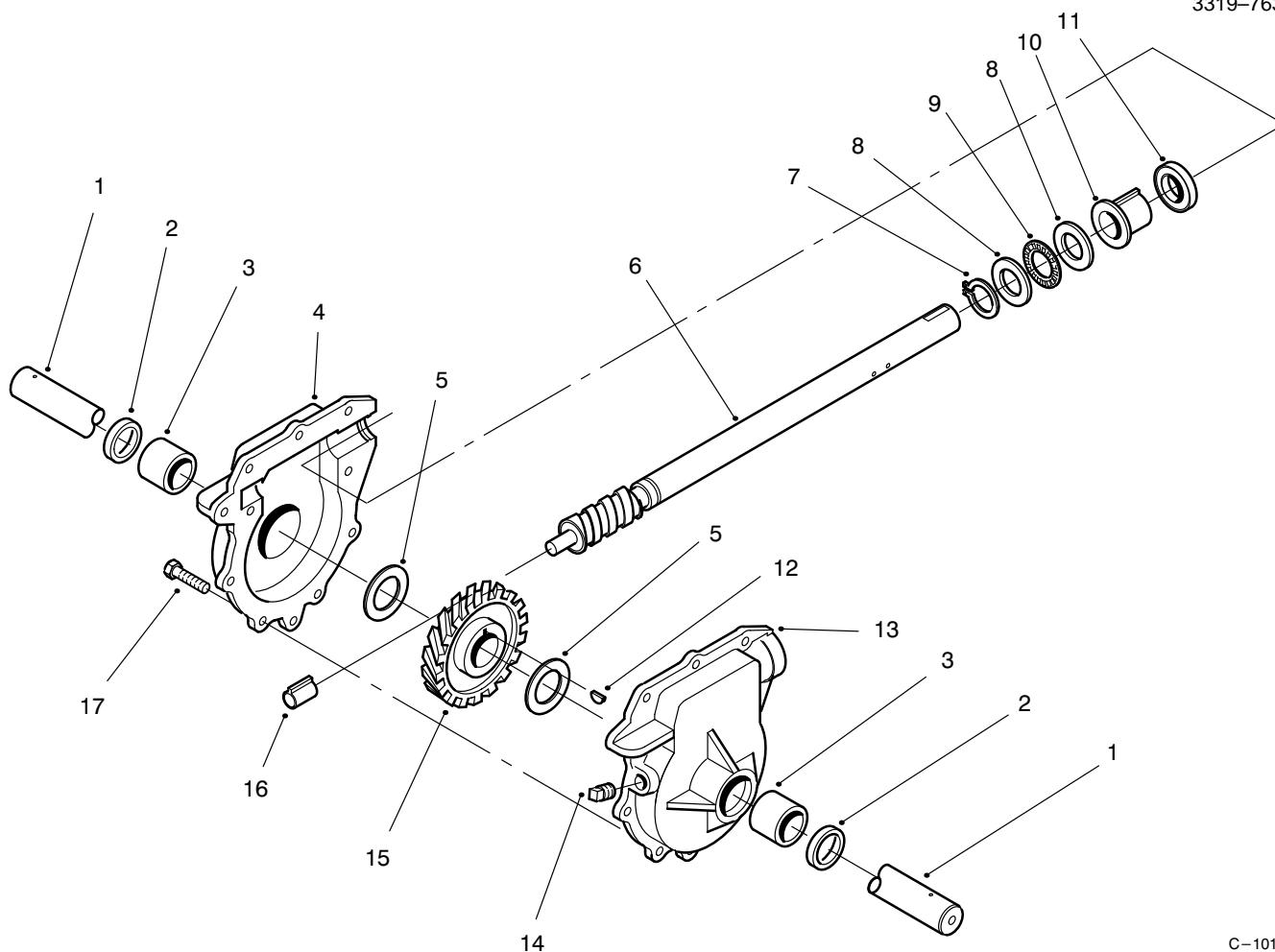


C-0045

HOUSING ASSEMBLY (Continued)

Ref. No.	Part No.	Description	No. Used	Ref. No.	Part No.	Description	No. Used
29	63-3290	Cover - Cable	1	47	3296-47	Nut - Lock	12
30	3269-23	Rivet	4	48	3230-23	Screw - Carriage	10
31	66-6980	Frame - Engine	1	49	3296-42	Nut - Lock	10
32	62-1440	Cover - Engine Frame	1	50	66-7920	Impeller	1
33	3234-5	Screw - Hex. Washer Hd.	4	51	66-8010	Spacer	2
34	68-4110	Plate - Engine Stud L.H.	1	52	321-44	Screw - Hex. Hd.	2
*	68-4100	Plate - Engine Stud R.H.	1	53	74-1561	Auger Gearbox Assembly	1
35	3257-23	Key - Woodruff	1	54	68-7451	Auger - R.H.	1
36	252-80	Washer - Thrust	1	*	68-7461	Auger - L.H.	1
37	3296-29	Nut - Lock	15	55	25-5090	Spacer - Auger Hub	1
38	26-6110	Flange - Bearing (Rear)	1	56	20-0990	Flange - Bearing (Inner)	2
39	63-3450	Bearing - Impeller	1	57	20-0980	Bearing - Auger	2
40	26-6120	Flange - Bearing (Front)	1	58	20-1000	Flange - Bearing (Outer)	2
41	68-8410	Cover - Belt (Lower)	1	59	322-12	Bolt - Auger	2
42	3256-23	Washer - Flat	1	60	321-3	Screw - Hex. Hd.	8
43	52-2861	Washer	4	61	32144-14	Screw	6
44	74-1440	Skid Assembly	2	*	12-8789	Impeller Bearing Assembly (Incl. Ref. #38-40)	1
45	66-7761	Blade - Scraper	1				
46	66-7831	Plate - Side L.H.	1				

*Not Illustrated



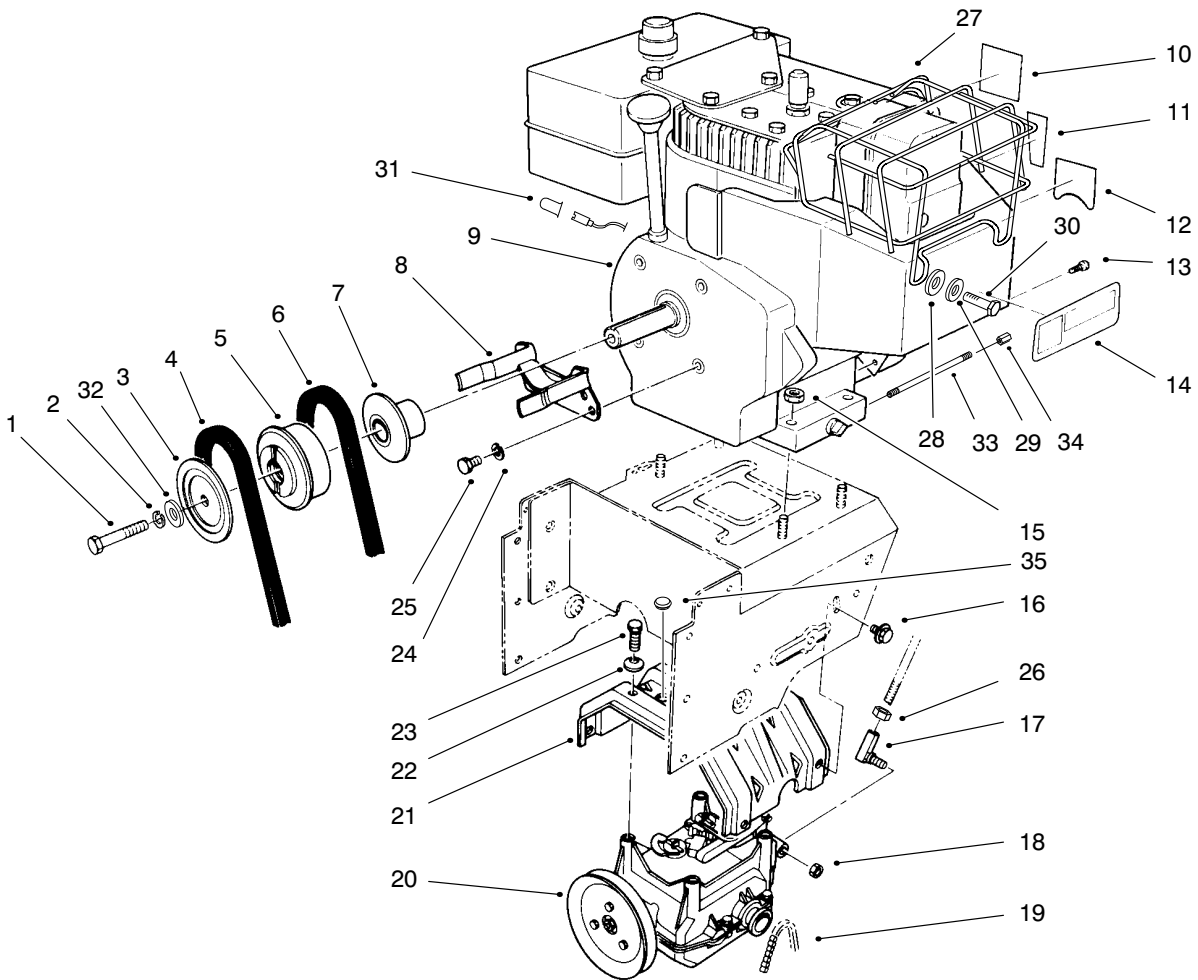
C-1015

28" AUGER GEARCASE ASSEMBLY NO. 74-1561

Ref. No.	Part No.	Description	No. Used
1	62-1531	Shaft - Auger (28")	1
2	7-0045	Seal - Oil	2
3	256-237	Bushing - Sleeve	2
4	74-1550	Gearcase Assembly - R.H. (Incl. Ref. # 2-3)	1
5	252-71	Bearing - Thrust	2
6	66-7811	Shaft - Impeller	1
7	32151-33	Ring - Snap	1
8	252-78	Washer - Thrust	2
9	252-76	Bearing - Thrust	1

Ref. No.	Part No.	Description	No. Used
10	37-6560	Bushing - Input	1
11	253-149	Seal - Input	1
12	3257-10	Key - Woodruff	1
13	74-1540	Gearcase Assembly - L.H. (Incl. Ref. # 2-3)	1
14	281-1	Plug - Pipe Sq. Hd.	1
15	62-0120	Gear - Helical	1
16	62-1150	Bushing - Worm	1
17	32144-110	Screw - Hex. Washer Hd.	9
*	505-129	Sealant - 100g Tube	1

*Not Illustrated



C-1727

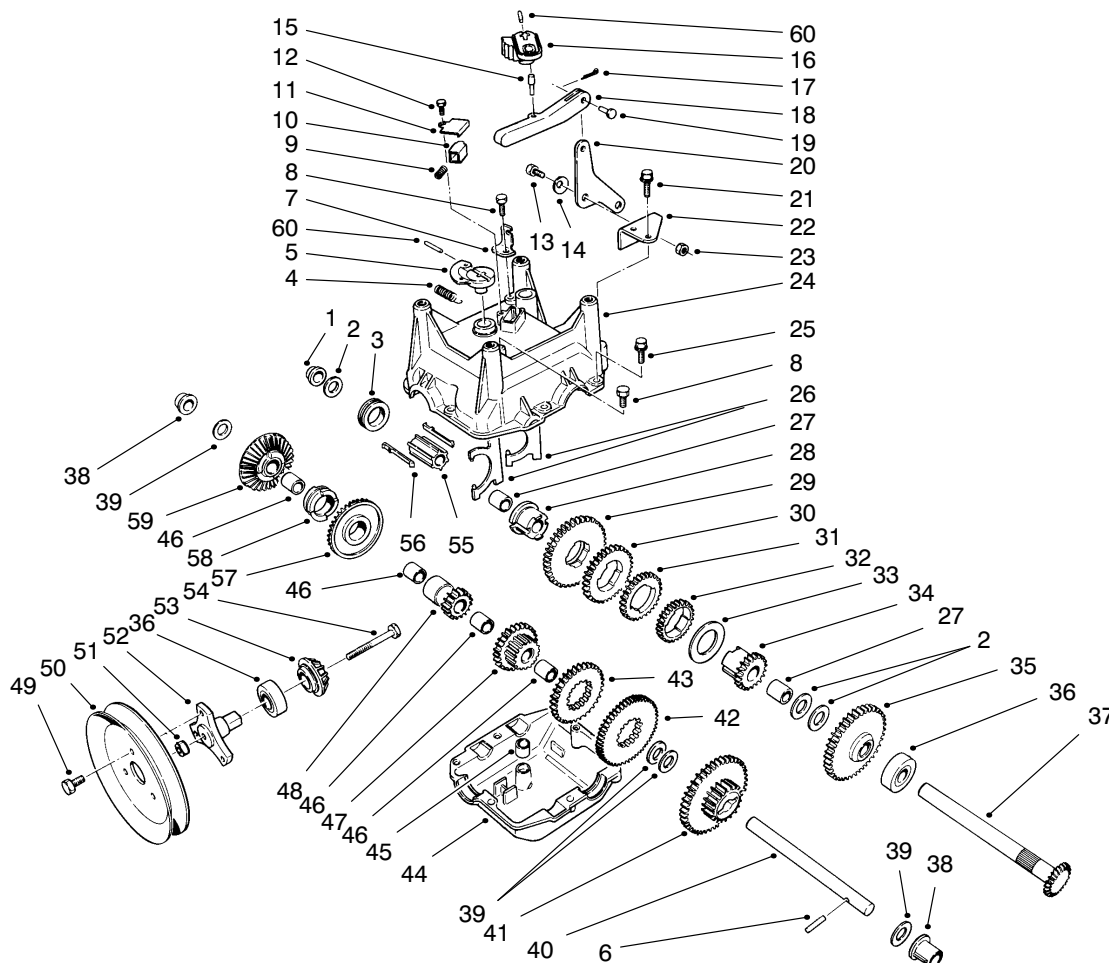
ENGINE ASSEMBLY

Ref. No.	Part No.	Description	No. Used
1	3212-8	Screw – Hex. Hd.	1
2	3253-6	Washer – Lock	1
3	62-0940	Sheave Half – Impeller	1
4	63-2962	Belt – Impeller	1
5	62-0930	Hub – Sheave	1
6	63-2951	Belt – Traction	1
7	62-0920	Sheave Half – Traction	1
8	68-7510	Guide – Belt	1
†9		Engine – Tecumseh Model HMSK100-159227W	1
10	94-2572	Decal – Primer	1
11	63-2450	Decal – Throttle	1
12	63-2410	Decal – Choke	1
13	32144-4	Screw	1
14	66-6840	Decal – Hot Surface (Model 38556 Only)	1
*	93-1265	Decal – Hot Surface (Model 38555 Only)	1
15	32128-20	Nut – Lock	4
16	3234-7	Screw – Hex. Flange Hd.	4
17	78-2920	Joint – Ball	1
18	3296-6	Nut – Lock	1
19	63-2930	Chain – Drive	1

Ref. No.	Part No.	Description	No. Used
20	66-8030	Transmission Assembly	1
21	63-2990	Frame – Transmission	1
22	3290-461	Washer – Belleville	4
23	11-0590	Screw – Hex. Hd.	4
24	3253-4	Washer – Lock	2
25	3210-1	Screw – Hex. Hd.	2
26	3220-3	Nut – Jam	1
†27	127-20	Guard – Muffler (Model 38555 Only)	1
†28	32-251-1	Washer – Flat (Model 38555 Only)	2
†29	36-180	Washer – Lock (Model 38555 Only)	2
†30	42-671	Screw – Self Tapping (Model 38555 Only)	2
31	94-2782	Cap – Wire (Model 38556 Only)	1
32	3256-41	Washer	1
33	289-34	Nipple – Pipe	1
34	288-2	Cap – Pipe	1
35	95-7947	Cap – Plug	2
*	3290-378	Tie – Cable	1

†Obtain from your local Tecumseh Dealer.

*Not Illustrated

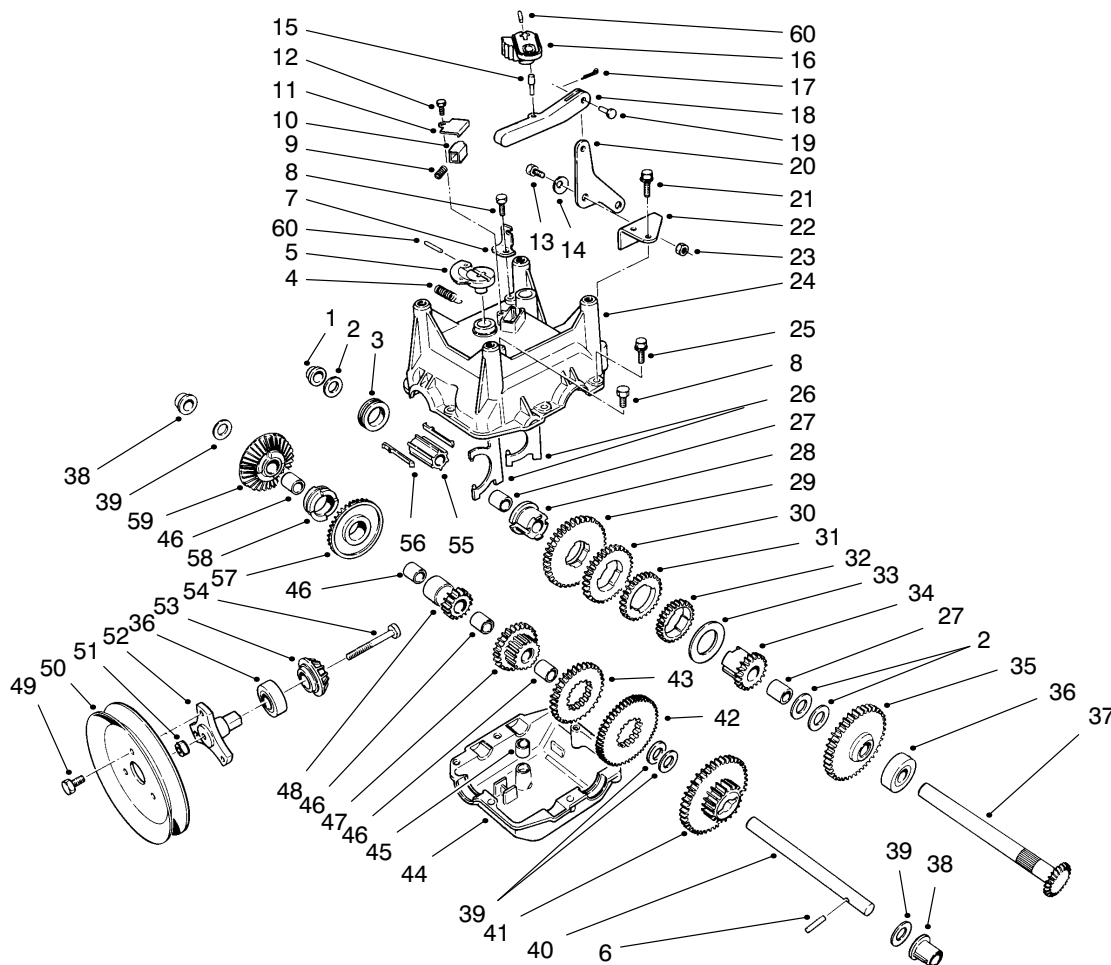


C-0052

TRANSMISSION ASSEMBLY NO. 66-8030

Ref. No.	Part No.	Description	No. Used
1	62-1180	Bushing - Output (Flange)	1
2	252-59	Washer - Thrust	3
3	62-0430	Collar - Shift (Speed)	1
4	63-2920	Spring - Extension (F/R Return)	1
5	62-0880	Lever - Direction Shift	1
6	32121-106	Pin - Coil	1
7	62-1740	Bracket - Cable	1
8	32144-4	Screw - Self Tapping	2
9	63-2890	Spring - Compression (Detent)	1
10	62-1020	Button - Detent	1
11	62-1690	Cover - Detent	1
12	32104-71	Screw - Pan Hd.	1
13	63-3410	Bolt - Shoulder	1
14	3290-477	Washer - Curved	1
15	63-2190	Pin - Gearshift Link	1
16	62-0870	Lever - Gear Shift	1
17	3272-1	Pin - Cotter	1
18	62-0860	Link - Gearshift	1
19	283-3	Pin - Clevis	1
20	63-2600	Bellcrank	1
21	32104-95	Screw - Hex. Washer Hd.	2

Ref. No.	Part No.	Description	No. Used
22	62-1190	Bracket - Bellcrank	1
23	3296-42	Nut - Lock	1
24	62-0490	Gear Case - Upper	1
25	32144-86	Screw - Hex Washer Hd.	6
26	62-1040	Yoke - Shift	2
27	62-1350	Bushing - Output	2
28	62-0320	Sleeve	1
29	62-0240	Gear - 45T	1
30	62-0220	Gear - 34T	1
31	62-0200	Gear - 27T	1
32	62-0250	Gear - 29T	1
33	63-2280	Washer - Thrust	1
34	62-0340	Sleeve - Gear 19T	1
35	62-0370	Gear - 41T	1
36	38-7820	Bearing - Ball	2
37	62-1080	Shaft - Output	1
38	62-1170	Bushing - Flange	2
39	257-10	Washer - Thrust	4
40	62-0330	Shaft - Intermediate	1
41	62-0360	Gear - Compound 19T/41T	1
42	62-0260	Gear - 51T	1
43	62-0210	Gear - 33T	1
44	62-0480	Gear Case - Lower	1



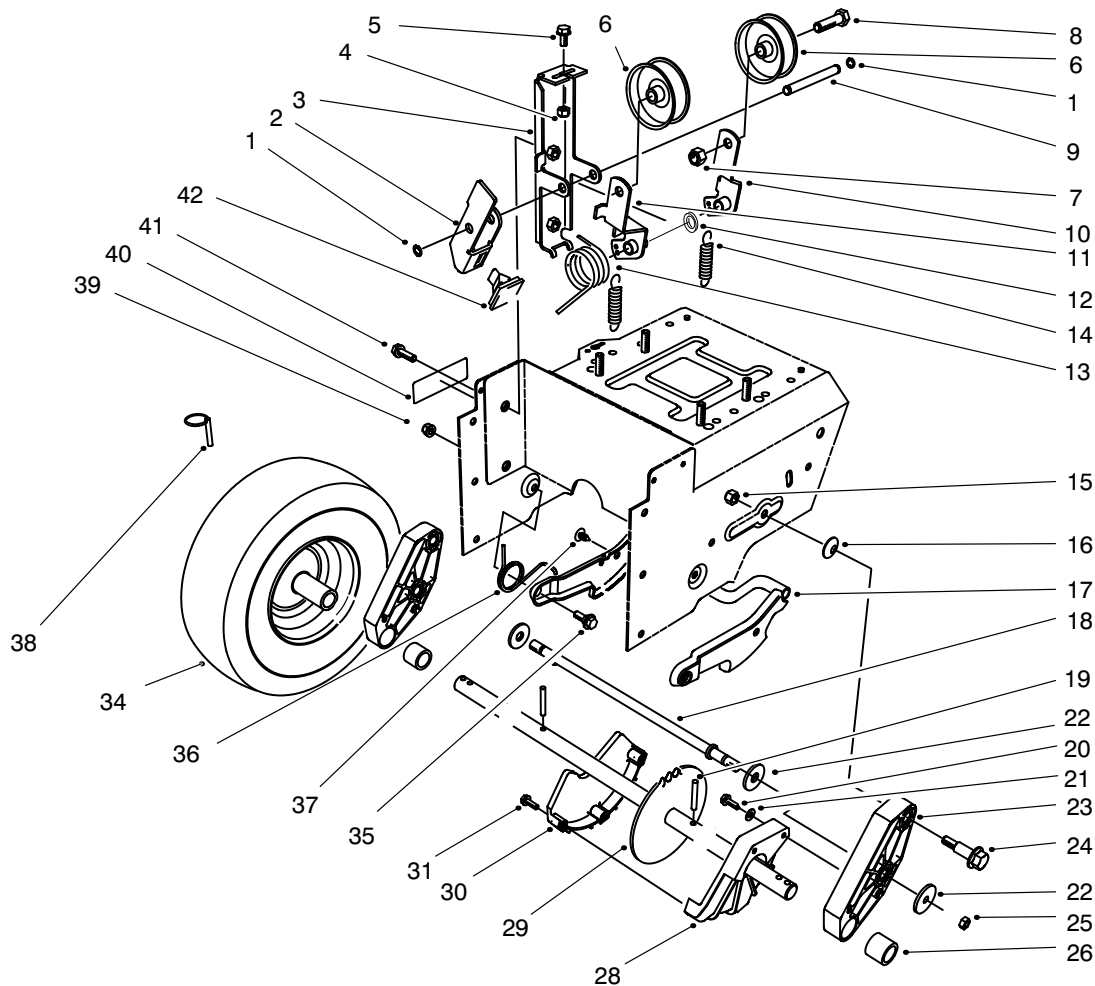
C-0052

TRANSMISSION ASSEMBLY NO. 66-8030 (Continued)

Ref. No.	Part No.	Description	No. Used
45	29-9570	Bushing - Yoke	1
46	62-1160	Bushing - Intermediate	4
47	68-4310	Gear - 26T	1
48	62-0500	Gear - 15T	1
49	12-3270	Screw	3
50	62-1310	Pulley - Traction	1
51	32128-32	Nut - Flange Lock	1
52	62-0380	Hub - Pulley	1
53	62-0350	Pinion - Bevel 19T	1

Ref. No.	Part No.	Description	No. Used
54	321-15	Screw - Hex. Hd.	1
55	68-4320	Sleeve - Shift	1
56	62-0310	Key - Shift	2
57	67-5870	Gear - Bevel 36T	1
58	67-5880	Collar - Shift	1
59	13-3559	Gear - Bevel Reverse 36T (Incl. Ref. #46)	1
60	32121-120	Pin - Coil	2
*	505-101	Grease - 14.5 oz. Cartridge	1

*Not Illustrated

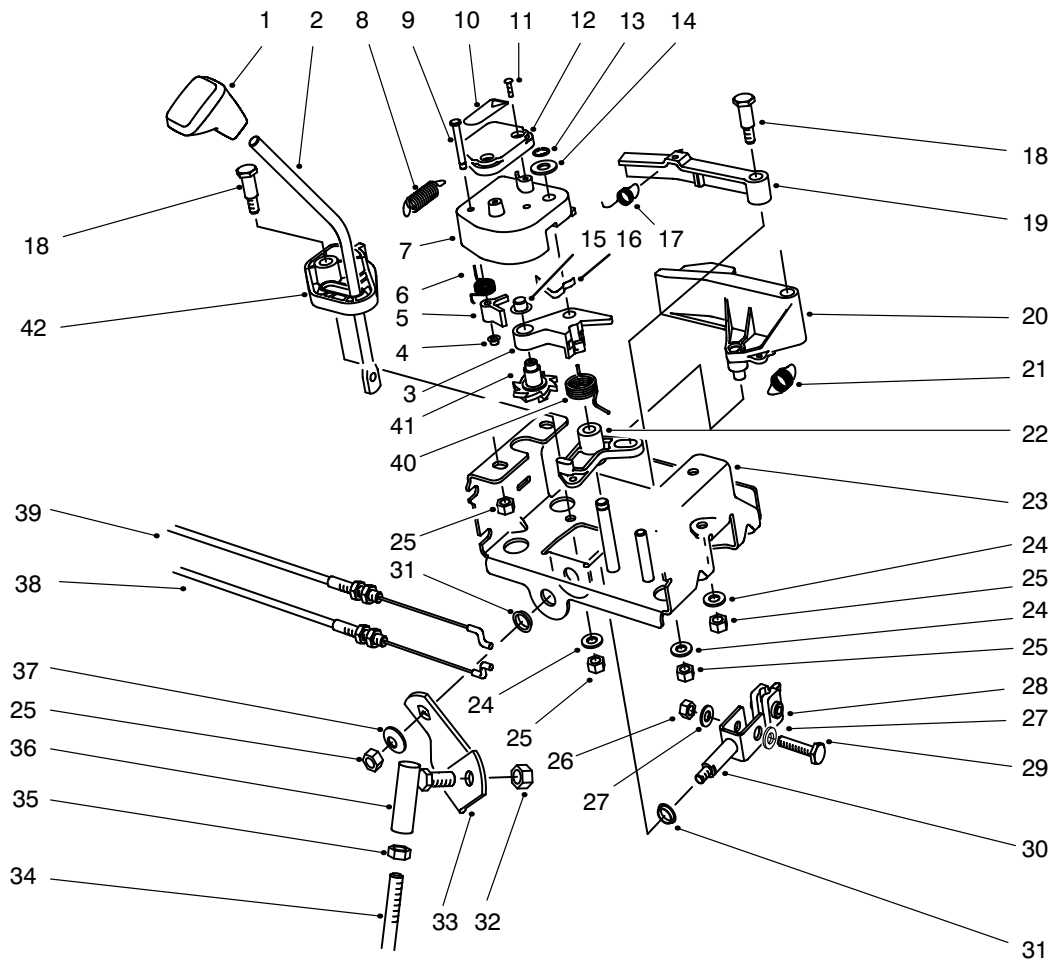


C-0053

TRACTION DRIVE ASSEMBLY

Ref. No.	Part No.	Description	No. Used
1	32120-46	Ring - Retaining	2
2	63-2820	Arm - Brake	1
3	63-2850	Bracket - Idler Arm	1
4	3296-42	Nut - Lock	1
5	3234-13	Screw - Hex. Hd.	1
6	3-4244	Pulley - Idler	2
7	3296-59	Nut - Lock	2
8	323-7	Screw - Hex. Hd.	2
9	62-0970	Pin - Idler	1
10	93-8045	Arm - Traction Idler	1
11	93-8046	Arm - Impeller Idler	1
12	3256-38	Washer - Flat	1
13	63-2881	Spring - Torsion	1
14	63-2870	Spring - Extension	2
15	3296-39	Nut - Lock	2
16	3290-461	Washer - Belleville	2
17	62-0470	Latch - Arm	1
18	66-7720	Rod - Latch	1
19	32121-9	Pin - Roll	2
20	32144-4	Screw - Hex. Flange Hd.	2
21	3256-1	Washer - Flat	2
22	63-3340	Washer	4

Ref. No.	Part No.	Description	No. Used
23	66-7740	Pivot Arm Assembly (Incl. Ref. # 26)	2
24	62-1330	Bolt - Shoulder	2
25	3296-23	Nut - Lock	2
26	63-2250	Bushing - Axle	2
28	62-1010	Guard - Chain L.H.	1
29	63-2112	Axle Assembly	1
30	62-1000	Guard - Chain R.H.	1
31	94-4496	Screw - Hex. Flange Hd.	3
34	67-9230	Tire & Wheel Assembly	2
35	5-2490	Bolt - Shoulder	2
36	63-2740	Spring - Torsion	1
37	3290-476	Fastener - Panel	1
38	3290-243	Pin - Klik	2
39	3296-47	Nut - Lock	2
40	66-6860	Decal - Warning (Model 38556 Only)	1
*	94-2575	Decal - Warning (Model 38555 Only)	1
41	3234-7	Screw - Hex. Flange Hd.	2
42	66-8060	Pad - Brake	1

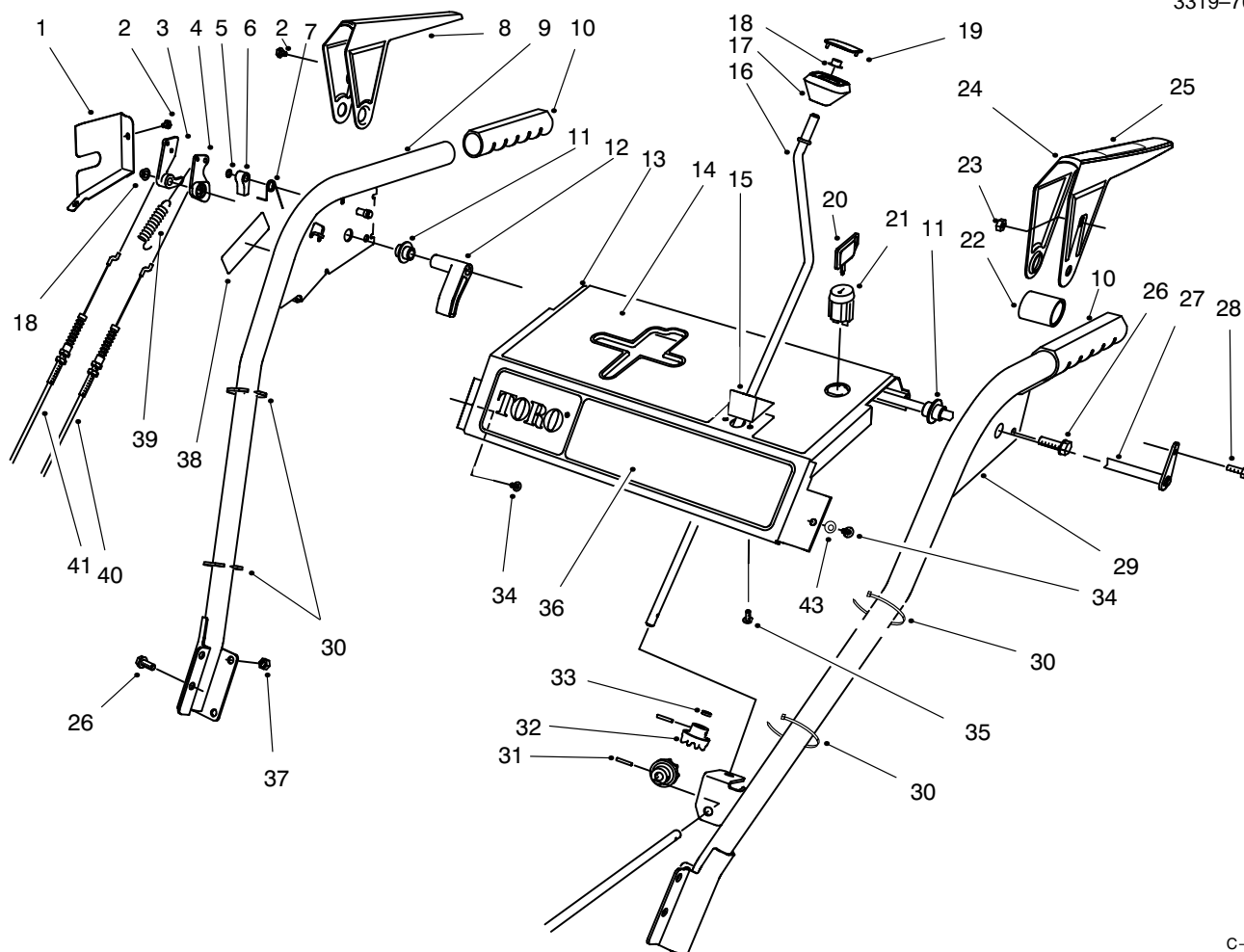


C-0054

TRACTION LINKAGE ASSEMBLY

Ref. No.	Part No.	Description	No. Used
1	62-1290	Knob - Shift	1
2	67-9240	Rod - Shift (Upper)	1
3	62-1110	Lever - Index Wheel	1
4	3290-422	Nut - Push	1
5	62-0180	Tang - Index	1
6	62-1650	Spring - Torsion	1
7	62-1100	Lever - Latch	1
8	63-2220	Spring - Extension	1
9	63-2610	Pin - Tang	1
10	63-2480	Decal - #2	1
11	94-6961	Screw - Pan Hd.	2
12	62-1140	Cover - Latch	1
13	32120-46	Ring - Retaining	1
14	257-9	Washer - Thrust	1
15	3290-320	Nut - Push	1
16	62-1710	Spring - Flat	1
17	63-2240	Spring - Extension	1
18	63-2650	Screw - Shoulder	2
19	62-1700	Lever - Lockout	1
20	62-1130	Lever - Reverse	1
21	63-2230	Spring - Extension	1

Ref. No.	Part No.	Description	No. Used
22	62-1120	Lever - Reverse	1
23	63-2150	Frame - Control	1
24	3256-23	Washer - Flat	3
25	3296-29	Nut - Lock	7
26	3296-42	Nut - Lock	1
27	3256-1	Washer - Flat	2
28	67-9250	Retainer - Shift Rod	1
29	321-9	Screw - Hex. Hd.	1
30	66-7730	Clevis	1
31	256-296	Bushing - Nylon	2
32	3296-6	Nut - Lock	1
33	63-2630	Bracket - Shift	1
34	63-2830	Rod - Shift (Lower)	1
35	3220-3	Nut - Jam	1
36	78-2920	Joint - Ball	1
37	3290-456	Washer - Belleville	1
38	63-2210	Cable - Gearbox	1
39	63-2200	Cable - Latch	1
40	63-2270	Spring - Torsion	1
41	62-0170	Wheel - Index	1
42	62-1470	Base - Lockout	1



C-2582

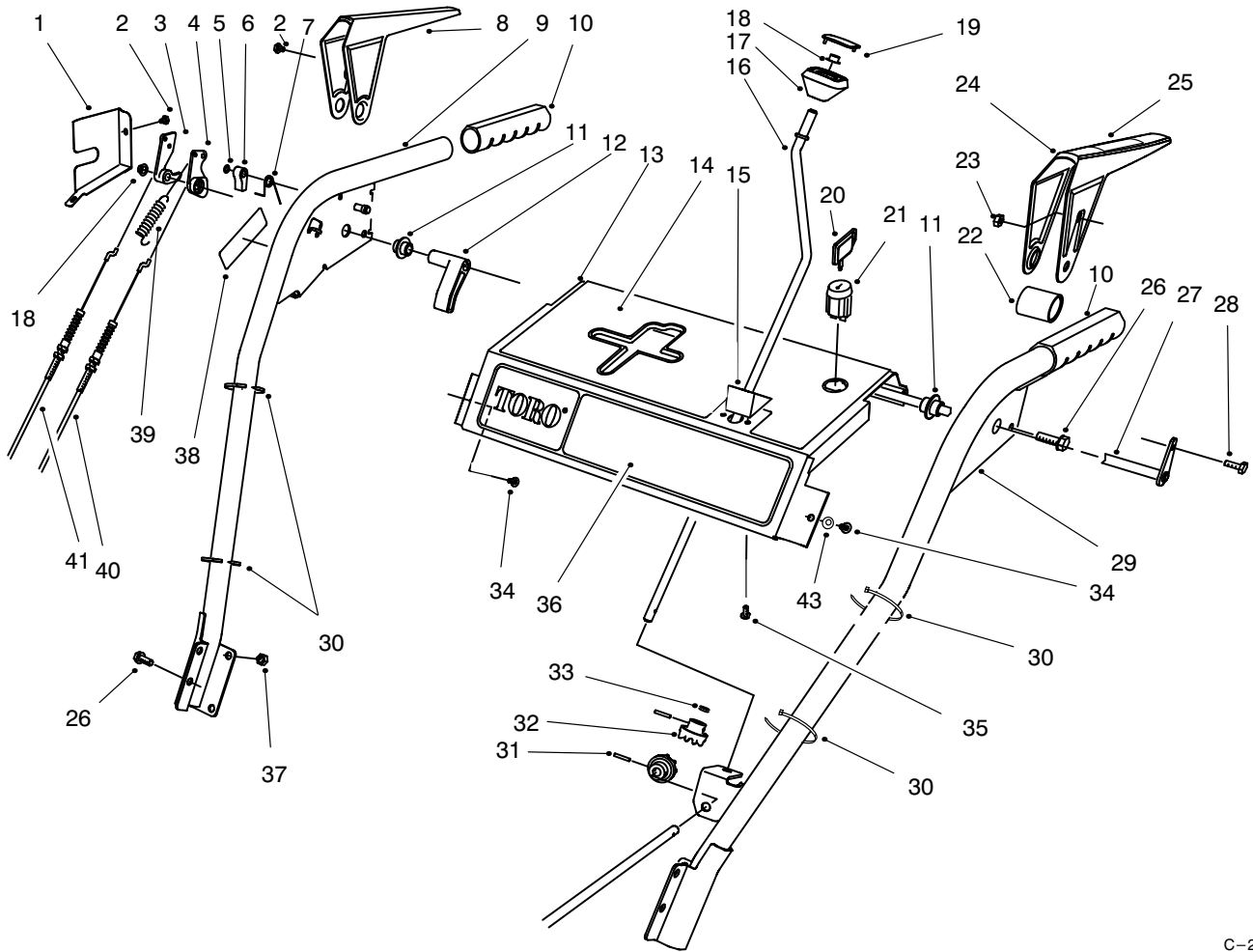
HANDLE ASSEMBLY

Ref. No.	Part No.	Description	No. Used
1	63-2170	Cover - Lever Lock	1
2	2210-250	Screw	3
3	62-0300	Tang - Locking	1
4	62-0290	Cam - Release	1
5	32151-66	Ring - Retaining	1
6	62-0280	Latch - Lock	1
7	63-2910	Spring - Torsion	1
8	62-1050	Lever - Impeller	1
9	62-1381	Handle - R.H.	1
10	66-7850	Handlegrip	2
11	62-1070	Bushing - Lever	2
12	62-1640	Lever - Trip	1
13	66-8100	Panel - Control	1
14	66-6850	Decal - Panel Top (Model 38556 Only)	1
*	94-2578	Decal - Panel Top (Model 38555 Only)	1
15	62-1490	Plate - Guide	1
16	63-2160	Rod - Chute Crank	1
17	62-1320	Knob - Chute Control	1
18	3290-320	Nut - Push	2
19	62-1520	Cover - Knob	1
20	63-8360	Key - Switch	1

Ref. No.	Part No.	Description	No. Used
21	40-5940	Switch - On/Off	1
22	63-3380	Spacer - Traction Lever	1
23	3296-2	Nut - Lock	1
24	62-1060	Lever - Traction	1
25	63-3050	Decal - Lever (Model 38556 Only)	1
26	32144-14	Screw - Hex. Flange Hd.	6
27	63-2030	Rod - Cross	1
28	3290-359	Screw	1
29	66-8091	Handle - L.H.	1
30	3290-378	Tie - Cable	4
31	32121-50	Pin - Roll	2
32	62-1460	Gear - Universal	2
33	62-1230	Washer - Rubber	1
34	32104-76	Screw - Self Tapping	2
35	94-6961	Screw - Pan Hd.	2
36	88-0590	Decal - Panel Front	1
37	3296-47	Nut - Lock	4
38	66-6860	Decal - Warning (Model 38556 Only)	1
*	94-2575	Decal - Warning (Model 38555 Only)	1
39	88-0810	Spring - Extension	1

*Not Illustrated

3319-763



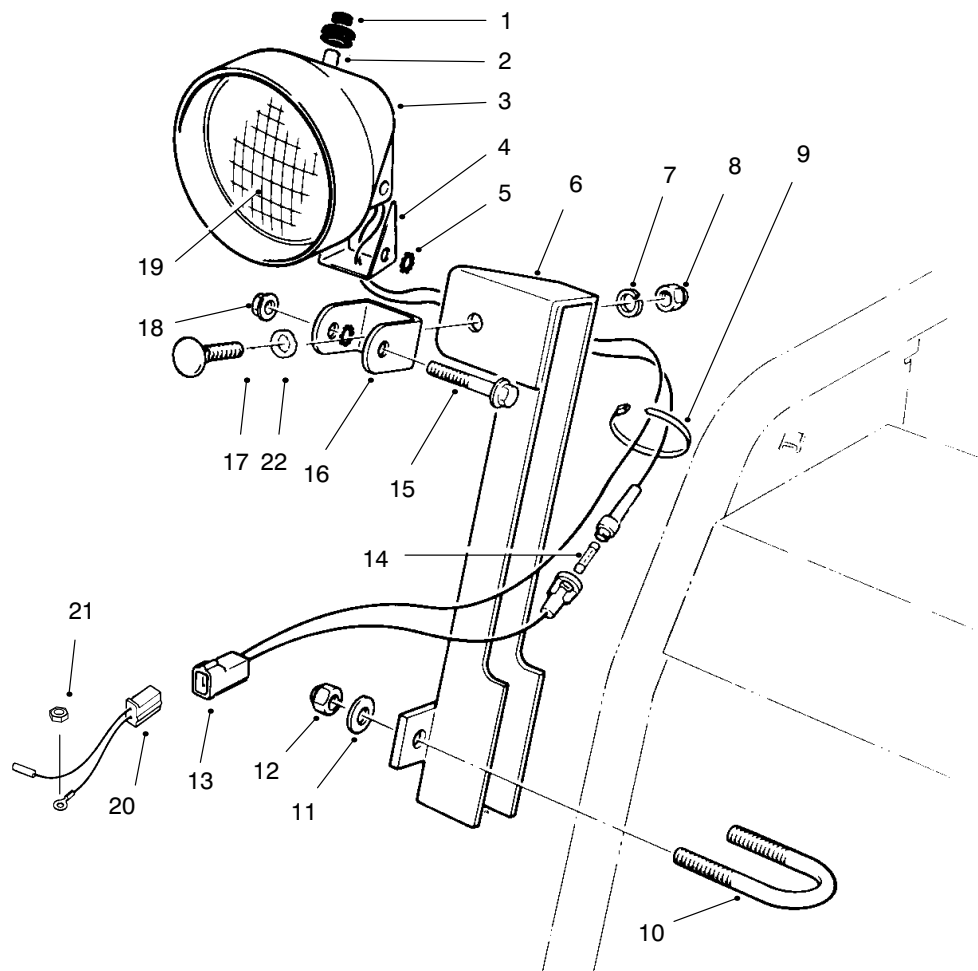
C-2582

HANDLE ASSEMBLY (Continued)

Ref. No.	Part No.	Description	No. Used
40	63-2710	Cable - Traction	1
41	63-2700	Cable - Impeller	1
43	3256-14	Washer - Flat	2
*	63-3420	Harness - Wire	1

Ref. No.	Part No.	Description	No. Used
*	17-4269	Loose Parts Kit (Model 38556 Only)	1
*	17-4259	Loose Parts Kit (Model 38555 Only)	1

*Not Illustrated



C-2586

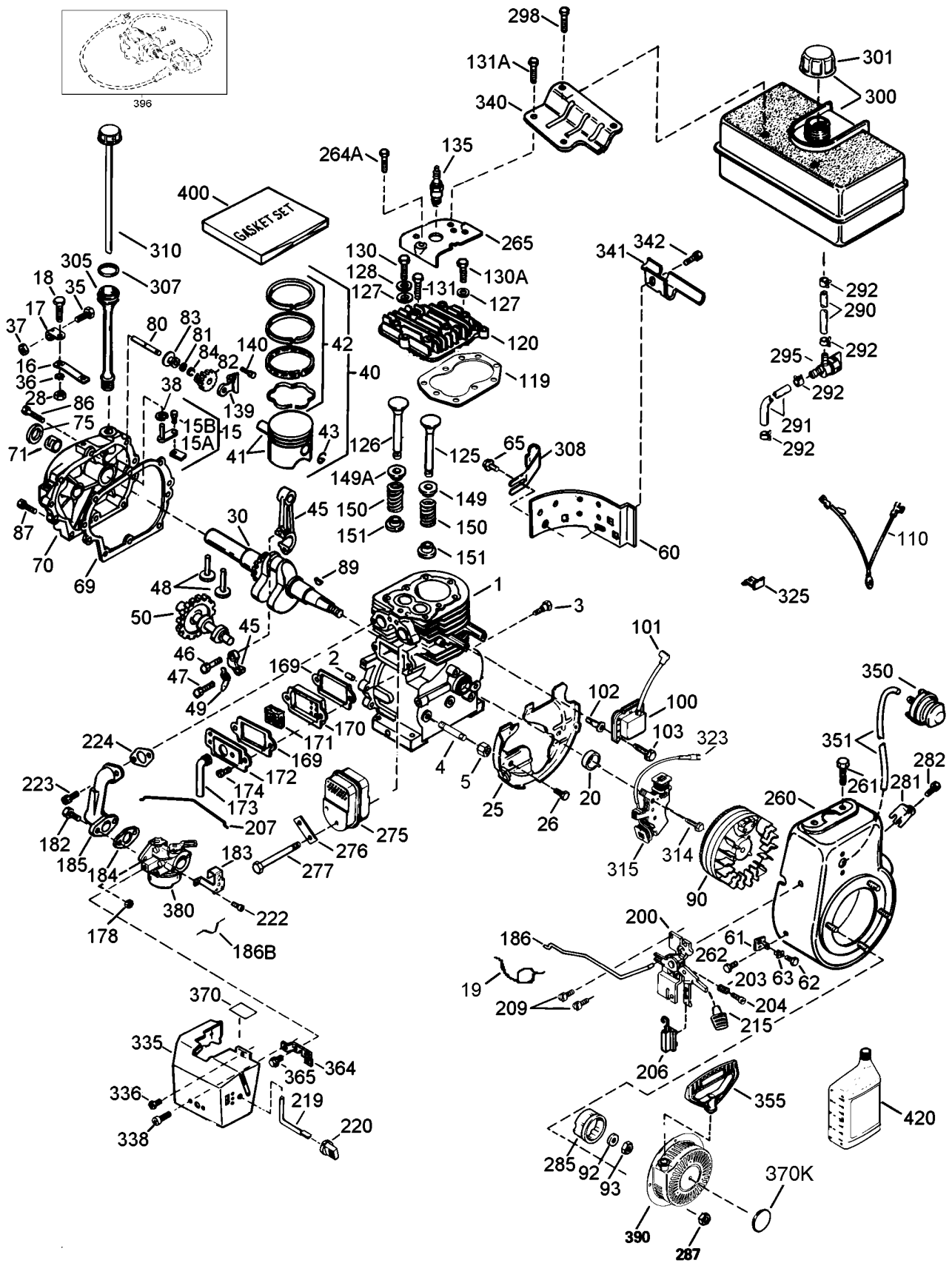
LIGHT ASSEMBLY (Model 38555 Only)

Ref. No.	Part No.	Description	No. Used
1	92-6033	Boot - Switch	1
2	218-553	Switch Assembly	1
3	218-552	Bucket - Headlamp	1
4	218-554	Bracket	1
5	3255-8	Washer - Lock	2
6	68-7110	Mount - Lamp	1
7	3253-21	Washer - Lock	1
8	3217-7	Nut - Hex.	1
9	3290-378	Tie - Cable	2
10	68-7140	Bolt - U	1
11	3256-23	Washer - Flat	2
12	3296-29	Nut - Lock	2

Ref. No.	Part No.	Description	No. Used
13		Wire Assembly	1
†14		Fuse - 7-1/2 Amp.	1
15	322-13	Screw - Hex. Flange Hd.	1
16	218-556	Bracket - U	1
17	3231-2	Bolt - Carriage	1
18	32128-35	Nut - Flange Lock	1
19	218-16	Bulb - Sealed Beam	1
20	54-9810	Wire Asm	1
21	3217-6	Nut - Hex	1
*	54-9871	Headlamp Assembly (Incl. Ref. #1-5, 7-8 & 13-19)	1
22	3256-26	Washer - Flat	1

*Not Illustrated
 †Obtain Locally

TECUMSEH ENGINE MODEL HMSK100-159227W



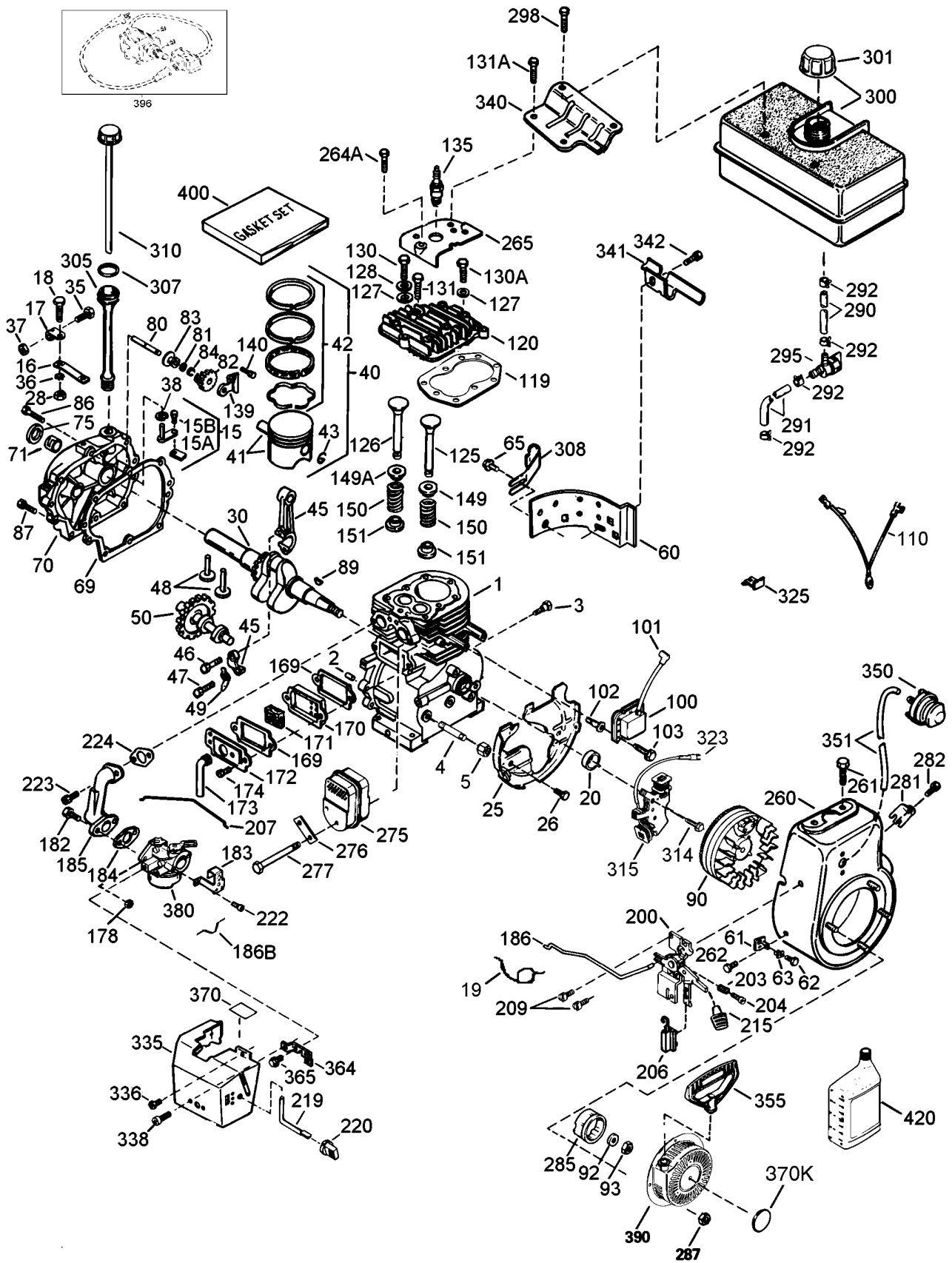
TECUMSEH ENGINE MODEL HMSK100-159227W

Ref. No.	Part No.	Description	No. Used	Ref. No.	Part No.	Description	No. Used
1	35371	Cylinder (Incl. ref.#2 & 20)	1	65	650128	Screw – Hex Head Sems	1
2	27652	Pin – Dowel	2	*69	35262A	Gasket – Cylinder Cover	1
3	650820	Screw – Hex Hd. Shoulder	2	70	35376	Cover Assembly, Cylinder (Incl. ref.#71, 75 & 80)	1
5	30969	Cap – Oil Drain	1	71	35377	Bushing – Cylinder Cover	1
15	30699C	Rod Assembly – Governor (Incl. ref.#15A & 15B)	1	72	27642	Oil Drain Plug	1
15A	30700	Yoke – Governor	1	75	35319	Seal – Oil	1
15B	650494	Screw – Fil. Hd. Sems	1	80	31845	Shaft – Governor	1
16	33454	Lever – Governor	1	81	30590A	Washer – Flat	1
17	29916	Clamp – Governor Lever	1	82	35378	Gear – Governor (Incl. ref.#81)	1
18	651028	Screw – Hex Washer Hd.	1	83	30588A	Spool – Governor	1
19	34663	Spring – Speed Control	1	84	29193	Ring – Retaining	1
20	35319	Seal – Oil	1	86	650833	Screw, Hex Washer Powerlok	7
25	36460	Baffle – Blower Housing	1	87	650832	Screw, Hex Washer Powerlok	1
26	650561	Screw – Hex Washer Hd.	2	89	32589	Key – Flywheel	1
28	30322	Locknut	1	90	611093	Flywheel (w/Ring Gear)	1
30	35571A	Crankshaft	1	92	650880	Washer – Lock	1
35	29826	Screw – Hex Washer Hd.	1	93	650881	Nut – Flywheel	1
36	29918	Washer – Ext. Tooth Lock	1	100	35135	Solid State Assembly	1
37	29216	Nut & Lockwasher – Keps	1	101	610118	Cover – Spark Plug	1
38	29642	Ring – Retaining	1	102	651024	Stud – Solid State Mounting	2
40	35776	Piston, Pin & Ring Assy. Std. (Includes ref.#41, 42 & 43)	1	103	651007	Screw, Torx Hex Washer Sems	1
	35777	Piston, Pin & Ring Assy. .010 oversize (Includes ref.#41, 42 & 43)	1	110	35253	Wire – Ground	1
	35778	Piston, Pin & Ring Assy. .020 oversize (Includes ref.#41, 42 & 43)	1	*119	36451	Gasket – Cylinder Head	1
41	35773	Piston & Pin Assembly Standard (Includes ref.#43)	1	120	36449	Head – Cylinder	1
	35774	Piston & Pin Assembly .010 oversize (Incl. ref.#43)	1	125	27878A	Valve – Exhaust, Standard (Incl. ref.# 151)	1
	35775	Piston & Pin Assembly .020 oversize (Incl. ref.#43)	1		27880A	Valve – Exhaust 1/32" oversize (Incl. ref.# 151)	1
42	35779	Ring Set, Piston (Standard)	1	126	34035	Valve – Intake, Standard (Incl. ref.# 151)	1
	35780	Ring Set, Piston (.010 oversize)	1		34036	Valve – Intake 1/32" oversize (Incl. ref.# 151)	1
	35781	Ring Set, Piston (.020 oversize)	1	127	650691	Washer – Flat	5
43	35772	Retaining Ring, Piston Pin	2	128	650690	Washer – Belleville	3
45	36898	Rod Assembly – Connecting (Incl. ref.#46, 47 & 49)	1	130	6021A	Screw – Hex Flange Hd.	4
47	651033	Bolt, Connecting Rod	1	130A	650727	Screw – Special	2
48	34034	Lifter – Valve	2	131	650694A	Screw – Hex Flange Hd.	3
49	36896	Dipper – Oil	1	131A	650713	Screw – Hex Hd.	2
50	35375	Camshaft (Mechanical Compression Release)	1	135	35395	Spark Plug (RJ-19LM Resistor)	1
60	33273A	Extension – Blower Housing	1	139	33369	Bracket – Governor Gear	1
61	34126	Bracket – Grommet Mounting	1	140	650836	Screw – Hex Washer Hd.	2
62	650760	Screw – Pan Hd. Taptite	1	149	27882	Cap – Upper Valve Spring	1
63	28545	Grommet – Plastic	1	149A	35862	Seal Assy. – Intake Valve	1
				150	27881	Spring – Valve	2
				151	32581	Cap – Lower Valve Spring	2
				*169	27896A	Gasket – Breather	2
				170	28423	Body – Breather	1
				171	28424	Element – Breather	1
				172	28425	Cover – Breather	1

Obtain Parts From Your Local Tecumseh Dealer

* Included in Gasket Set 36452 (Ref.# 400).

TECUMSEH ENGINE MODEL HMSK100-159227W



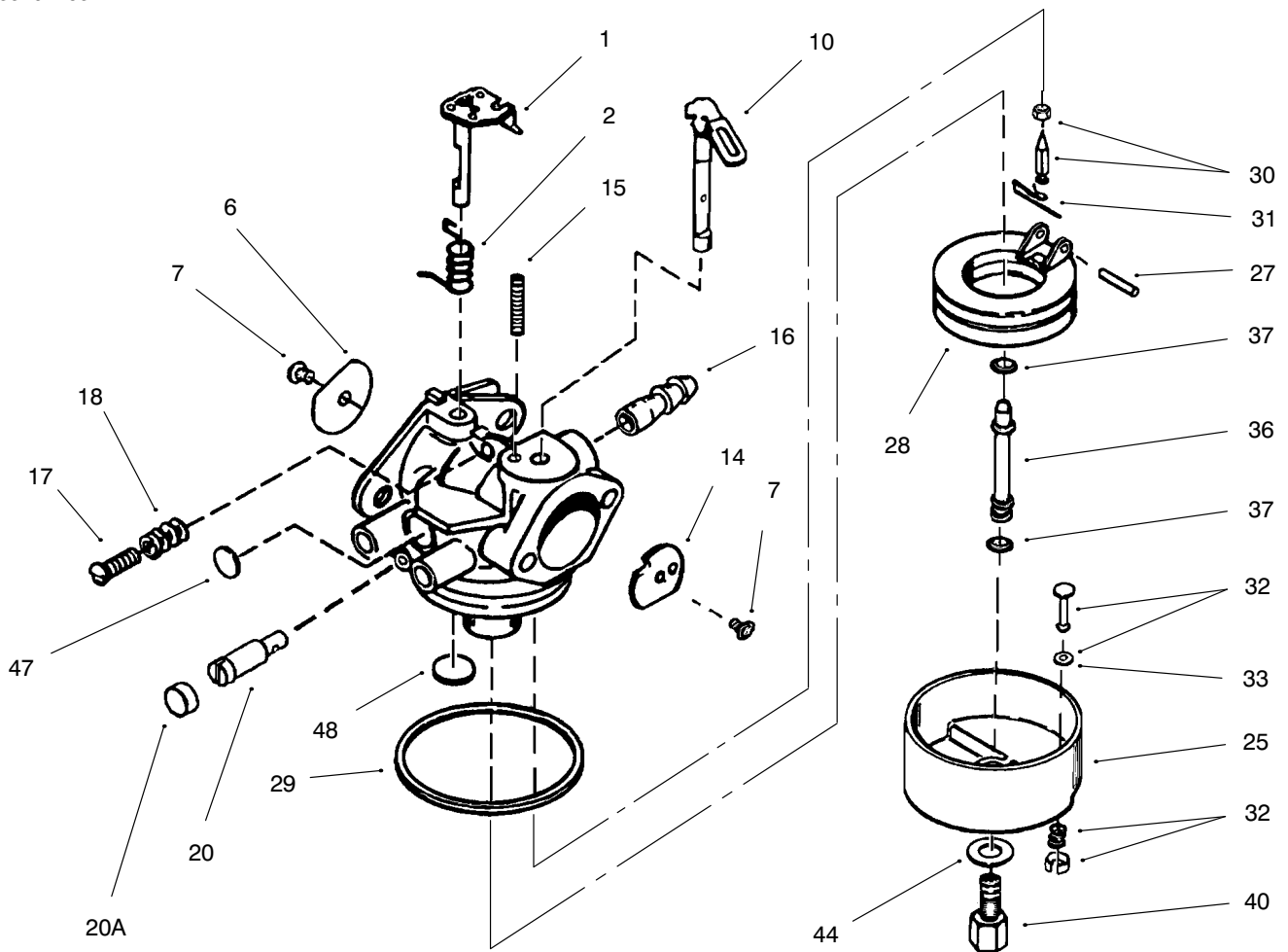
TECUMSEH ENGINE MODEL HMSK100-159227W

Ref. No.	Part No.	Description	No. Used
173	35350	Tube – Breather	1
174	650128	Screw – Hex Hd. Sems	2
178	29752	Nut & Lockwasher	2
182	30088A	Screw – Fil. Hd. Sems	2
183	34587A	Bracket – Choke	1
*184	33263	Gasket – Intake Pipe	1
185	33877	Pipe – Intake	1
186	34667	Link – Governor	1
186B	36652	Spring – Choke	1
200	34677	Bracket Assy. – Control (Incl. Ref.# 203, 204 & 206)	1
203	31342	Spring – Compression	1
204	651029	Screw – Fil Hd.	1
206	610973	Terminal Assembly	1
207	33878	Link – Governor to Throttle	1
209	650821	Screw – Hex Washer Hd.	2
215	35440	Knob – Control	1
219	34586	Rod – Choke	1
220	35438	Knob – Choke	1
222	28820	Screw – Fil. Hd. Sems	2
223	650378	Screw – Torx Fil Hd. Sems	2
*224	27915A	Gasket – Carburetor	1
260	35447A	Housing – Blower	1
261	650788	Screw – Hex Hd.	2
262	29747B	Screw – Hex Hd. Sems	2
264A	650802	Cover – Cylinder Head	1
265	33272B	Cover – Cylinder Head	1
275	35056	Muffler	1
276	31588	Plate – Lock	1
277	651002	Screw – Flange Hex Hd.	2
281	33013	Cover – Starter Hole	1
282	650760	Screw – Pan Hd. Taptite	1
285	35985B	Hub – Starter	1
287	29752	Nut & Lockwasher	4
290	29774	Line – Fuel (8-1/4")	1
291	30705	Line – Fuel (16")	1

Ref. No.	Part No.	Description	No. Used
292	26460	Clamp – Fuel Line	4
295	35857	Valve – Fuel Shut-Off	1
298	650665	Screw – Hex Washer Hd.	2
300	34156A	Tank Assembly, Fuel (Incl. Ref.# 292 & 301)	1
301	36246	Cap – Fuel Tank	1
305	35554	Tube – Oil Fill	1
306	35499	O-Ring	1
308	35540	Clip – Fill Tube	1
310	36205	Dipstick – Oil	1
314	650873	Screw – Hex Hd. Sems	1
316	611111	Coil Assy., Alternator (18 Watt)	1
323	611118	Terminal	1
325	29443	Clip – Spring	1
327	35392	Starter Plug	1
335	35057A	Cover – Carburetor	1
336	650765	Screw – Hex Washer Hd.	1
338	28942	Screw – Hex Washer Sems	2
340	34155	Bracket – Fuel Tank	1
341	34154	Plate – Fuel Tank Mounting	1
342	650561	Screw – Hex Washer Hd.	1
350	570682	Primer Assembly	1
351	32180C	Line – Primer	1
355	590574	Starter Handle – Mitten Grip	1
364	33377	Bracket – Carburetor Cover Mounting	1
365	650767	Screw – Hex Washer Hd.	2
370	36261	Lubrication Decal	1
380	640054	Carburetor (Incl. Ref.# 184)	1
390	590733	Starter – Rewind	1
396	33329D	Electric Starter Motor (Option)	1
400	36452A	Gasket Set (Incl. items marked *)	1
420	730226	SAE 5W30 4-Cycle Oil (Qt.)	1

Obtain Parts From Your Local Tecumseh Dealer

* Included in Gasket Set 36452 (Ref.# 400).

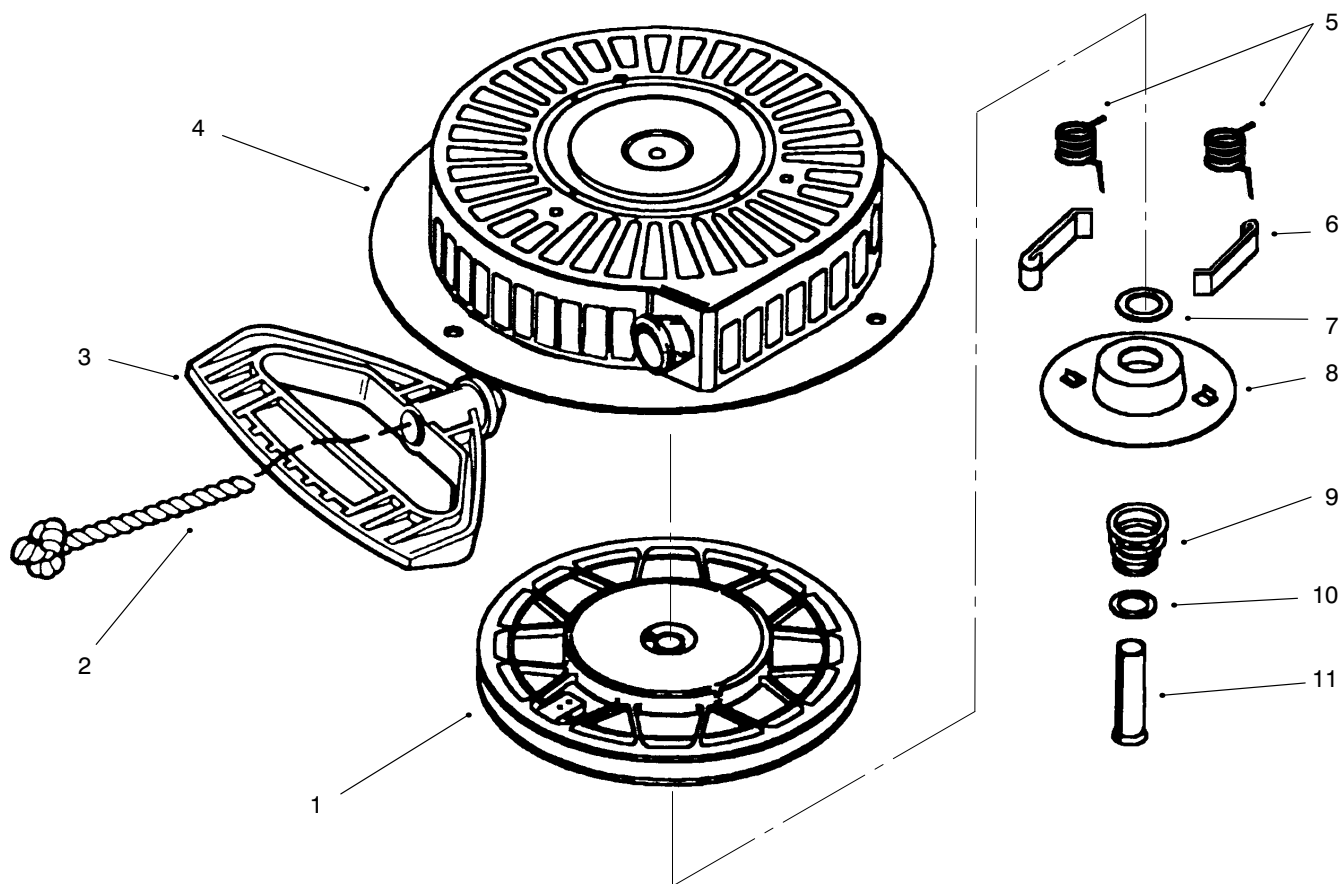


TECUMSEH CARBURETOR NO. 640054

Ref. No.	Part No.	Description	No. Used
1	631776A	Throttle Shaft & Lever Assy.	1
2	631970	Throttle Return Spring	1
6	631778	Throttle Shutter	1
7	650506	Screw – Throttle & Choke Shutter	2
10	632112	Choke Shaft & Lever Assy	1
14	632174	Choke Shutter	1
15	630735	Choke Positioning Spring	1
16	632164	Fitting – Fuel	1
17	650417	Screw – Idle Speed	1
18	630766	Spring – Tension	1
20	640016	Screw – Idle Restrictor	1
20A	640053	Cap – Idle Restrictor Screw	1
25	631951	Float Bowl (Incl. Ref.# 32 & 33)	1

Ref. No.	Part No.	Description	No. Used
27	631024	Shaft – Float	1
28	632019	Float	1
29	631028	O–Ring, Float Bowl to Body	1
30	631021	Inlet Needle, Seat & Spring Clip (Incl Ref.# 31)	1
31	631022	Spring Clip	1
32	27136A	Bowl Drain Assy. (Incl Ref.# 33)	1
33	27554	Drain Plunger – Gasket	1
36	640005	Main Nozzle Tube	1
37	632547	ORing – Main Nozzle Tube	2
40	640012	High Speed Bowl Nut	1
44	27110	Bowl Nut Washer	1
47	630748	Welch Plug – Idle Mixing	1
48	631027	Welch Plug – Vent	1

Obtain Parts From Your Local Tecumseh Dealer



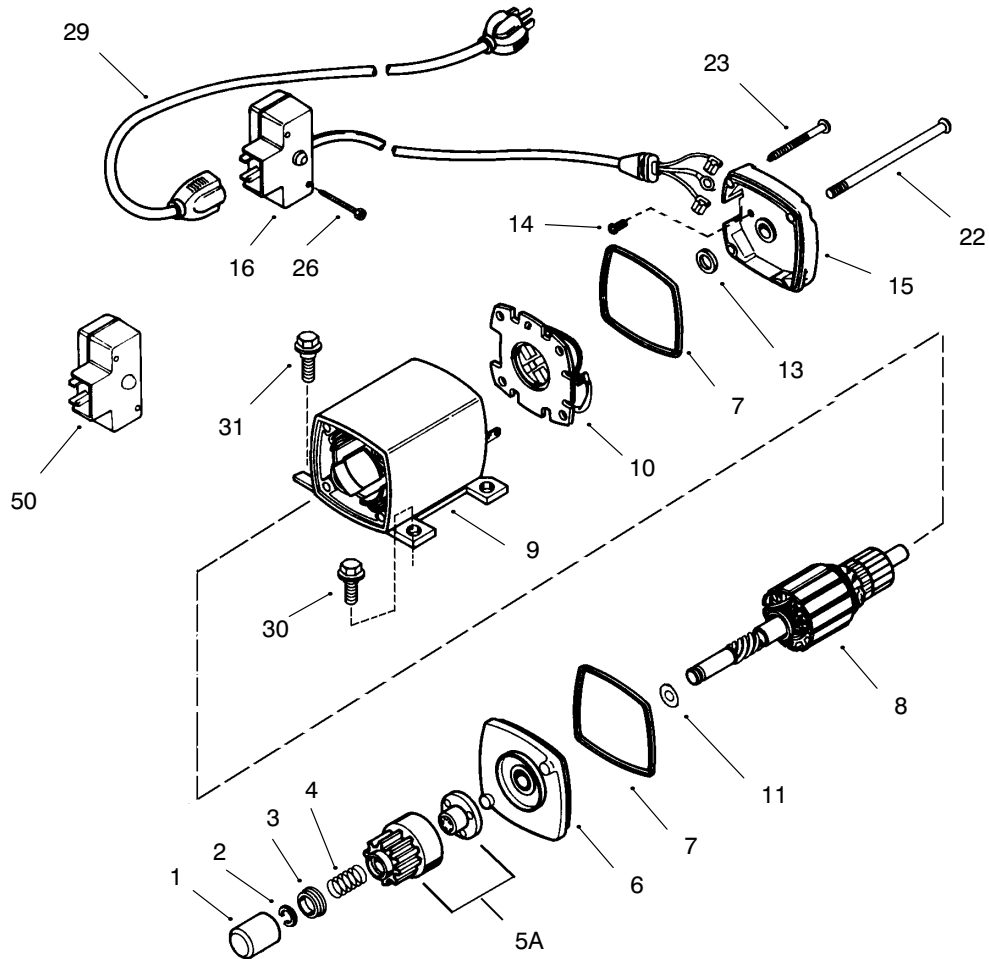
REWIND STARTER TECUMSEH NO. 590733

Ref. No.	Part No.	Description	No. Used
1	590709	Pulley & Rewind Spring Assembly	1
2	590535	Rope – Starter	1
‡3	590574	Handle – Mitten Grip	1
4	590734	Starter Housing Asm	1
5	590699	Spring – Dog	2
6	590698	Dog – Starter	2

Ref. No.	Part No.	Description	No. Used
7	590601	Washer	1
8	590696	Retainer	1
9	590697	Spring – Brake	1
10	590600	Washer	1
11	590599A	Pin – Spring (Incl. Ref. #7)	1
*	590749	Rewind Starter (Optional)	1

Obtain Parts From Your Local Tecumseh Dealer

‡Not Included in Starter Assembly.



ELECTRIC STARTER NO. 33329D (OPTIONAL)

Ref. No.	Part No.	Description	No. Used
1	33451	Dust Cover	1
2	33842	Retainer Ring	1
3	33430	Spring Retainer	1
4	33431	Anti-drift Spring	1
5A	37050	Gear and Nut (Incl. Ref.# 2)	1
6	35449	Drive End Cap Asm. (Incl. Ref.# 7)	1
7	35450	O-Ring	2
8	35915	Armature	1
9	35451A	Housing Assembly	1
10	35452A	Brush Card Assembly	1
11	35911	Thrust Washer	1

Ref. No.	Part No.	Description	No. Used
13	590500	Thrust Washer	1
14	33441	Ground Screw	1
15	35453	Commutator End Cap Asm. (Incl. Ref.# 7)	1
16	35454	Switch Box Assembly (Incl. Ref# 26)	1
22	35455	Case Bolt	2
23	35456	Ground Screw	1
26	650819	Screw	2
29	32450A	Extension Cord	1
30	30063	Screw - Torx	2
31	650820	Screw	2
50	730623	Switch Repair Kit	1

Obtain Parts From Tecumseh

TORO PART NUMBER INDEX

Part No.	Description	Pg. No.	Ref. No.	Qty.	Part No.	Description	Pg. No.	Ref. No.	Qty.
3-0750	Washer - Retaining	1	2	2	62-1130	Lever - Reverse	8	20	1
3-4244	Pulley - Idler	7	6	2	62-1140	Cover - Latch	8	12	1
5-2490	Bolt - Shoulder	7	35	2	62-1150	Bushing - Worm	3	16	1
7-0045	Seal - Oil	3	2	2	62-1160	Bushing - Intermediate	6	46	4
11-0590	Screw - Hex. Hd.	4	23	4	62-1170	Bushing - Flange	5	38	2
12-3270	Screw	6	49	3	62-1180	Bushing - Output (Flange)	5	1	1
12-8789	Impeller Bearing Assembly	2	*	1	62-1190	Bracket - Bellcrank	5	22	1
13-3559	Gear - Bevel Reverse 36T	6	59	1	62-1230	Washer - Rubber	9	33	1
17-4269	Loose Parts Kit	10	*	1	62-1290	Knob - Shift	8	1	1
20-0980	Bearing - Auger	2	57	2	62-1300	Pulley - Impeller	1	24	1
20-0990	Flange - Bearing (Inner)	2	56	2	62-1310	Pulley - Traction	6	50	1
20-1000	Flange - Bearing (Outer)	2	58	2	62-1320	Knob - Chute Control	9	17	1
25-5090	Spacer - Auger Hub	2	55	1	62-1330	Bolt - Shoulder	7	24	2
26-6110	Flange - Bearing (Rear)	2	38	1	62-1350	Bushing - Output	5	27	2
26-6120	Flange - Bearing (Front)	2	40	1	62-1381	Handle - R.H.	9	9	1
29-9570	Bushing - Yoke	6	45	1	62-1430	Retainer - Chute	1	11	3
32-251-1	Washer - Flat	4	28	2	62-1440	Cover - Engine Frame	2	32	1
36-180	Washer - Lock	4	29	2	62-1460	Gear - Universal	9	32	2
37-6560	Bushing - Input	3	10	1	62-1470	Base - Lockout	8	42	1
38-7820	Bearing - Ball	5	36	2	62-1490	Plate - Guide	9	15	1
40-5940	Switch - On/Off	9	21	1	62-1520	Cover - Knob	9	19	1
42-671	Screw - Self Tapping	4	30	2	62-1531	Shaft - Auger (28)	3	1	1
52-2861	Washer	2	43	4	62-1640	Lever - Trip	9	12	1
53-7670	Decal - Danger Auger	1	5	1	62-1650	Spring - Torsion	8	6	1
54-9810	Wire Asm	11	20	1	62-1690	Cover - Detent	5	11	1
54-9871	Headlamp Assembly	11	*	1	62-1700	Lever - Lockout	8	19	1
62-0120	Gear - Helical	3	15	1	62-1710	Spring - Flat	8	16	1
62-0170	Wheel - Index	8	41	1	62-1720	Rod - Chute Gear	1	23	1
62-0180	Tang - Index	8	5	1	62-1740	Bracket - Cable	5	7	1
62-0200	Gear - 27T	5	31	1	63-2030	Rod - Cross	9	27	1
62-0210	Gear - 33T	5	43	1	63-2080	Cover - Belt (Upper)	1	28	1
62-0220	Gear - 34T	5	30	1	63-2112	Axle Assembly	7	29	1
62-0240	Gear - 45T	5	29	1	63-2150	Frame - Control	8	23	1
62-0250	Gear - 29T	5	32	1	63-2160	Rod - Chute Crank	9	16	1
62-0260	Gear - 51T	5	42	1	63-2170	Cover - Lever Lock	9	1	1
62-0280	Latch - Lock	9	6	1	63-2180	Bracket - Gear	1	7	1
62-0290	Cam - Release	9	4	1	63-2190	Pin - Gearshift Link	5	15	1
62-0300	Tang - Locking	9	3	1	63-2200	Cable - Latch	8	39	1
62-0310	Key - Shift	6	56	2	63-2210	Cable - Gearbox	8	38	1
62-0320	Sleeve	5	28	1	63-2220	Spring - Extension	8	8	1
62-0330	Shaft - Intermediate	5	40	1	63-2230	Spring - Extension	8	21	1
62-0340	Sleeve - Gear 19T	5	34	1	63-2240	Spring - Extension	8	17	1
62-0350	Pinion - Bevel 19T	6	53	1	63-2250	Bushing - Axle	7	26	2
62-0360	Gear - Compound 19T/41T	5	41	1	63-2270	Spring - Torsion	8	40	1
62-0370	Gear - 41T	5	35	1	63-2280	Washer - Thrust	5	33	1
62-0380	Hub - Pulley	6	52	1	63-2300	Retainer - Cable	1	26	1
62-0430	Collar - Shift (Speed)	5	3	1	63-2410	Decal - Choke	4	*	1
62-0470	Latch - Arm	7	17	1	63-2450	Decal - Throttle	4	11	1
62-0480	Gear Case - Lower	5	44	1	63-2480	Decal - #2	8	10	1
62-0490	Gear Case - Upper	5	24	1	63-2600	Bellcrank	5	20	1
62-0500	Gear - 15T	6	48	1	63-2610	Pin - Tang	8	9	1
62-0721	Housing - 28	1	6	1	63-2630	Bracket - Shift	8	33	1
62-0820	Gear - Worm	1	22	1	63-2650	Screw - Shoulder	8	18	2
62-0840	Chute Assembly	1	19	1	63-2670	Plate - Chute Retainer	1	10	3
62-0860	Link - Gearshift	5	18	1	63-2700	Cable - Impeller	10	41	1
62-0870	Lever - Gear Shift	5	16	1	63-2710	Cable - Traction	10	40	1
62-0880	Lever - Direction Shift	5	5	1	63-2740	Spring - Torsion	7	36	1
62-0920	Sheave Half - Traction	4	7	1	63-2820	Arm - Brake	7	2	1
62-0930	Hub - Sheave	4	5	1	63-2830	Rod - Shift (Lower)	8	34	1
62-0940	Sheave Half - Impeller	4	3	1	63-2850	Bracket - Idler Arm	7	3	1
62-0970	Pin - Idler	7	9	1	63-2870	Spring - Extension	7	14	2
62-1000	Guard - Chain R.H.	7	30	1	63-2881	Spring - Torsion	7	13	1
62-1010	Guard - Chain L.H.	7	28	1	63-2890	Spring - Compression	5	9	1
62-1020	Button - Detent	5	10	1	63-2900	Washer - Plastic	1	17	2
62-1040	Yoke-Shift	5	26	2	63-2910	Spring - Torsion	9	7	1
62-1050	Lever - Impeller	9	8	1	63-2920	Spring - Extension	5	4	1
62-1060	Lever - Traction	9	24	1	63-2930	Chain - Drive	4	19	1
62-1070	Bushing - Lever	9	11	2	63-2951	Belt - Traction	4	6	1
62-1080	Shaft - Output	5	37	1	63-2962	Belt - Impeller	4	4	1
62-1100	Lever - Latch	8	7	1	63-2990	Frame - Transmission	4	21	1
62-1110	Lever - Index Wheel	8	3	1	63-3020	Guard - Chute	1	14	1
62-1120	Lever - Reverse	8	22	1	63-3050	Decal - Lever	9	25	1

*Not Illustrated

TORO PART NUMBER INDEX (Cont.)

Part No.	Description	Pg. No.	Ref. No.	Qty.	Part No.	Description	Pg. No.	Ref. No.	Qty.
63-3130	Clip - Chute Guard	1	12	1	252-59	Washer - Thrust	5	2	3
63-3290	Cover - Cable	2	29	1	252-71	Bearing - Thrust	3	5	2
63-3340	Washer	7	22	4	252-76	Bearing - Thrust	3	9	1
63-3380	Spacer - Traction Lever	9	22	1	252-78	Washer - Thrust	3	8	2
63-3410	Bolt - Shoulder	5	13	1	252-80	Washer - Thrust	2	36	1
63-3420	Harness - Wire	10	*	1	253-149	Seal - Input	3	11	1
63-3450	Bearing - Impeller	2	39	1	256-237	Bushing - Sleeve	3	3	2
63-8360	Key - Switch	9	20	1	256-296	Bushing - Nyloner	8	31	2
66-6840	Decal - Hot Surface	4	14	1	257-9	Washer - Thrust	8	14	1
66-6850	Decal - Panel Top	9	14	1	257-10	Washer - Thrust	5	39	4
66-6860	Decal - Warning	9	38	1	281-1	Plug - Pipe Sq. Hd.	3	14	1
66-6860	Decal - Warning	7	40	1	283-3	Pin - Clevis	5	19	1
66-6980	Frame - Engine	2	31	1	288-2	Cap - Pipe	4	34	1
66-7720	Rod - Latch	7	18	1	289-34	Nipple - Pipe	4	33	1
66-7730	Clevis	8	30	1	321-3	Screw - Hex. Hd.	2	60	8
66-7740	Pivot Arm Assembly	7	23	2	321-9	Screw - Hex. Hd.	8	29	1
66-7761	Blade - Scraper	2	45	1	321-15	Screw - Hex. Hd.	6	54	1
66-7811	Shaft - Impeller	3	6	1	321-44	Screw - Hex. Hd.	2	52	2
66-7821	Plate - Side R.H.	1	3	1	322-12	Bolt - Auger	2	59	2
66-7831	Plate - Side L.H.	2	46	1	322-13	Screw - Hex. Flange Hd.	11	15	1
66-7850	Handlegrip	9	10	2	323-4	Screw - Hex. Hd.	1	1	2
66-7920	Impeller	2	50	1	323-7	Screw - Hex. Hd.	7	8	2
66-8010	Spacer	2	51	2	3210-1	Screw - Hex. Hd.	4	25	2
66-8030	Transmission Assembly	4	20	1	3212-8	Screw - Hex. Hd.	4	1	1
66-8060	Pad - Brake	7	42	1	3217-6	Nut - Hex	11	21	1
66-8091	Handle - L.H.	9	29	1	3217-7	Nut - Hex.	11	8	1
66-8100	Panel - Control	9	13	1	3220-3	Nut - Jam	4	26	1
67-5870	Gear - Bevel 36T	6	57	1	3220-3	Nut - Jam	8	35	1
67-5880	Collar - Shift	6	58	1	3230-2	Bolt - Carriage	1	8	1
67-9230	Tire & Wheel Assembly	7	34	2	3230-23	Screw - Carriage	2	48	10
67-9240	Rod - Shift (Upper)	8	2	1	3231-2	Bolt - Carriage	11	17	1
67-9250	Retainer - Shift Rod	8	28	1	3234-5	Screw - Hex. Washer Hd.	2	33	4
68-4100	Plate - Engine Stud R.H.	2	*	1	3234-7	Screw - Hex. Flange Hd.	4	16	4
68-4110	Plate - Engine Stud L.H.	2	34	1	3234-7	Screw - Hex. Flange Hd.	7	41	2
68-4310	Gear - 26T	6	47	1	3234-13	Screw - Hex. Hd.	7	5	1
68-4320	Sleeve - Shift	6	55	1	3234-28	Screw - Hex. Flange Hd.	1	4	12
68-7110	Mount - Lamp	11	6	1	3242-4	Screw - Set Sq. Hd.	1	25	2
68-7140	Bolt - U	11	10	1	3253-4	Washer - Lock	4	24	2
68-7451	Auger - R.H.	2	54	1	3253-6	Washer - Lock	4	2	1
68-7461	Auger - L.H.	2	*	1	3253-21	Washer - Lock	11	7	1
68-7510	Guide - Belt	4	8	1	3255-8	Washer - Lock	11	5	2
68-8410	Cover - Belt (Lower)	2	41	1	3256-1	Washer - Flat	7	21	2
74-1440	Skid Assembly	2	44	2	3256-1	Washer - Flat	8	27	2
74-1540	Gearcase Assembly - L.H.	3	13	1	3256-14	Washer - Flat	1	16	3
74-1550	Gearcase Assembly - R.H.	3	4	1	3256-14	Washer - Flat	10	43	2
74-1561	Auger Gearbox Assembly	2	53	1	3256-23	Washer - Flat	11	11	2
78-2920	Joint - Ball	8	36	1	3256-23	Washer - Flat	8	24	3
78-2920	Joint - Ball	4	17	1	3256-23	Washer - Flat	2	42	1
88-0590	Decal - Panel Front	9	36	1	3256-26	Washer - Flat	11	22	1
88-0810	Spring - Extension	9	39	1	3256-38	Washer - Flat	7	12	1
92-6033	Boot - Switch	11	1	1	3256-41	Washer	4	32	1
93-1265	Decal - Hot Surface	4	*	1	3256-61	Washer - Flat	1	21	1
93-8045	Arm - Traction Idler	7	10	1	3257-10	Key - Woodruff	3	12	1
93-8046	Arm - Impeller Idler	7	11	1	3257-23	Key - Woodruff	2	35	1
94-2559	Decal - Danger Chute	1	*	1	3269-23	Rivet	2	30	4
94-2568	Decal - Danger Auger	1	*	1	3272-1	Pin - Cotter	5	17	1
94-2572	Decal - Primer	4	10	1	3274-13	Screw - Machine	1	13	3
94-2575	Decal - Warning	7	*	1	3290-243	Pin - Klik	7	38	2
94-2575	Decal - Warning	9	*	1	3290-320	Nut - Push	8	15	1
94-2578	Decal - Panel Top	9	*	1	3290-320	Nut - Push	9	18	2
94-2782	Cap - Wire	4	31	1	3290-326	Nut - Push	1	15	2
94-4496	Screw - Hex. Flange Hd.	7	31	3	3290-359	Screw	9	28	1
94-6961	Screw - Pan Hd.	8	11	2	3290-378	Tie - Cable	11	9	2
94-6961	Screw - Pan Hd.	9	35	2	3290-378	Tie - Cable	9	30	4
94-8079	Decal - Danger Chute	1	20	1	3290-378	Tie - Cable	4	*	4
95-7947	Cap - Plug	4	35	2	3290-422	Nut - Push	8	4	1
218-16	Bulb - Sealed Beam	11	19	1	3290-456	Washer - Belleville	8	37	1
218-552	Bucket - Headlamp	11	3	1	3290-461	Washer - Belleville	7	16	2
218-553	Switch Assembly	11	2	1	3290-461	Washer - Belleville	4	22	4
218-554	Bracket	11	4	1	3290-476	Fastener - Panel	7	37	1
218-556	Bracket - U	11	16	1	3290-477	Washer - Curved	5	14	1
2210-250	Screw	9	2	3	3296-2	Nut - Lock	1	9	4

*Not Illustrated

TORO PART NUMBER INDEX (Cont.)

3319-763

Part No.	Description	Pg. Ref. No. No. Qty.	Part No.	Description	Pg. Ref. No. No. Qty.
3296-2	Nut - Lock	9 23 1	32128-20	Nut - Lock	4 15 4
3296-6	Nut - Lock	4 18 1	32128-32	Nut - Flange Lock	6 51 1
3296-6	Nut - Lock	8 32 1	32128-35	Nut - Flange Lock	11 18 1
3296-23	Nut - Lock	7 25 2	32144-14	Screw	2 61 6
3296-29	Nut - Lock	11 12 2	32144-14	Screw - Hex. Flange Hd.	9 26 6
3296-29	Nut - Lock	8 25 7	32144-4	Screw	4 13 1
3296-29	Nut - Lock	2 37 15	32144-4	Screw - Hex. Flange Hd.	1 27 6
3296-39	Nut - Lock	7 15 2	32144-4	Screw - Hex. Flange Hd.	7 20 2
3296-42	Nut - Lock	7 4 1	32144-4	Screw - Self Tapping	5 8 2
3296-42	Nut - Lock	5 23 1	32144-86	Screw - Hex Washer Hd.	5 25 6
3296-42	Nut - Lock	8 26 1	32144-110	Screw - Hex. Washer Hd.	3 17 9
3296-42	Nut - Lock	2 49 10	32151-33	Ring - Snap	3 7 1
3296-47	Nut - Lock	9 37 4	32151-66	Ring - Retaining	9 5 1
3296-47	Nut - Lock	7 39 2	505-101	Grease - 14.5 oz. Cartridge	6 * 1
3296-47	Nut - Lock	2 47 12	505-129	Sealant - 100g Tube	3 * 1
3296-59	Nut - Lock	7 7 2			
32104-71	Screw - Pan Hd.	5 12 1	OPTIONAL EQUIPMENT		
32104-76	Screw - Self Tapping	9 34 2	110 Vac Electric Starter Kit	Part No. 37-4810	
32104-95	Screw - Hex. Washer Hd.	5 21 2	Drift Breaker	Part No. 66-7970	
32120-46	Ring - Retaining	7 1 2	Light Kit (Standard On Model 38555) . .	Part No. 66-7941	
32120-46	Ring - Retaining	8 13 1	Tire Chain Kit (Do Not Use W/68-9300)	Part No. 63-3040	
32121-9	Pin - Roll	7 19 2	Snow Cab Kit	Part No. 68-9500	
32121-50	Pin - Roll	9 31 2	Weight Kit (Required W/Snow Cab) . . .	Part No. 74-1190	
32121-106	Pin - Coil	5 6 1	Differential Kit	Part No. 68-9300	
32121-120	Pin - Coil	6 60 2			
32122-32	Screw	1 18 1			

*Not Illustrated