



100in CE Mower Cover Kit

Groundsmaster® 7210 Traction Unit or Groundsmaster® 360
Multi-Purpose Machine

Model No. 30687

Installation Instructions

⚠ WARNING

CALIFORNIA Proposition 65 Warning

This product contains a chemical or chemicals known to the State of California to cause cancer, birth defects, or reproductive harm.

Loose Parts

Use the chart below to verify that all parts have been shipped.

Procedure	Description	Qty.	Use
1	No parts required	–	Prepare the mower.
2	Pulley shield Retainer nut	1 1	Mount the pulley shield.
3	Front shield	2	Mount the front shields.
4	Right shield Left shield	1 1	Mount the side shields.
5	Retainer nut	2	Install the retainer nuts.
6	Pivot bracket Bolt (3/8 inch) Lock washer Retainer nut	1 2 2 1	Mount the pivot bracket.
7	Shield guide Flange nut	2 4	Mount the shield guide.
8	Right cover Flange nut Bolt Push nut	1 3 3 1	Mount the right cover.
9	Left cover Retainer nut Flange nut Bolt Push nut	1 2 3 3 1	Mount the left cover.
10	Center cover Push nut Bolt	1 3 3	Mount the center cover (Groundsmaster 7210 only).



Procedure	Description	Qty.	Use
11	Shield support (Groundsmaster 7210)	1	Mount the shield support.
	Shield support (Groundsmaster 360)	1	
	Hex-head screw (5/16 x 4 inches)	1	
	Washer	1	
	Flange nut	1	
12	Driveshaft shield	1	Mount the driveshaft shield.
	Shoulder bolt	1	
	Washer (0.469 x 0.922 inch)	1	
	Push nut	1	

Media and Additional Parts

Description	Qty.	Use
Installation instructions	1	Reference the instructions for installing the kit.
Parts catalog	1	Use the catalog to reference part numbers.

1

Preparing the Mower

No Parts Required

Procedure

1. Lower the cutting unit to the 1 inch height-of-cut setting, move the throttle lever to the Slow position, stop the engine, set the parking brake, and remove the ignition key.
2. Remove the 4 belt covers from the top of the cutting unit.
3. Remove any debris from the top of the cutting unit.

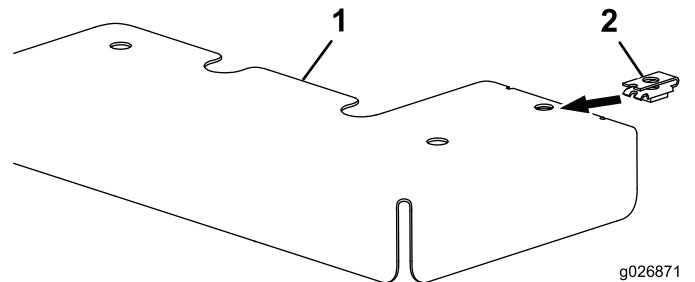


Figure 1

1. Pulley shield
2. Retainer nut

2. Remove the 2 nuts and 2 washers on the gearbox mount and install the pulley shield onto the cutting unit (Figure 2).

Note: Use the removed nuts, washers, and carriage bolts to secure the pulley shield onto the cutting unit.

2

Mounting the Pulley Shield

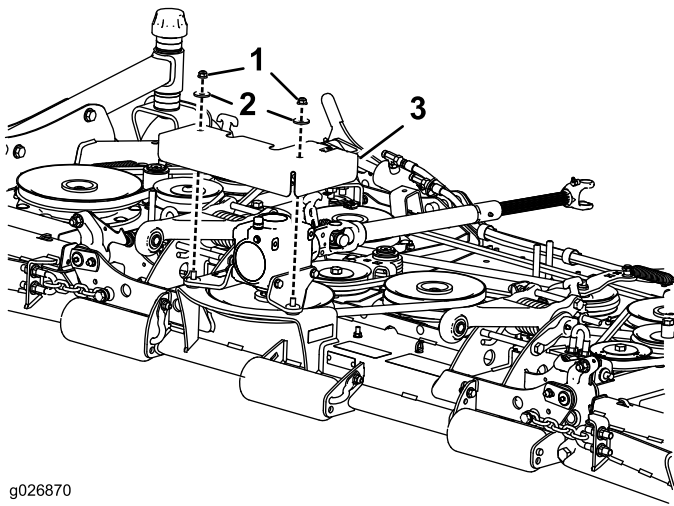
Parts needed for this procedure:

1	Pulley shield
1	Retainer nut

Procedure

1. Install the retainer nut to the pulley shield (Figure 1).

Note: The retainer nut will be used later in the installation of the center cover (Groundsmaster 7210 only).



g026870

Figure 2

1. Nut (2)
2. Washer (2)
3. Pulley shield

3

Mounting the Front Shields

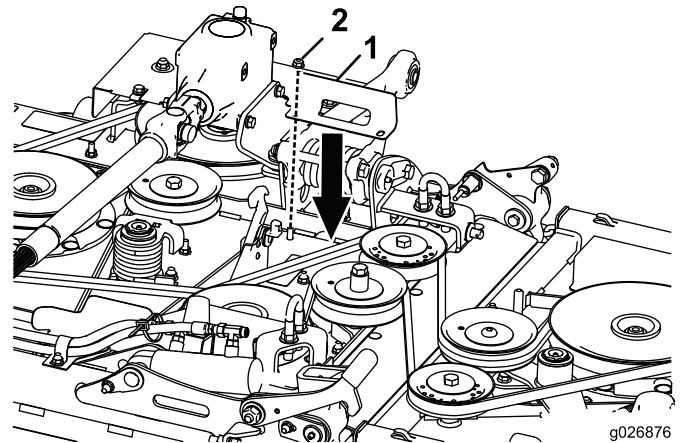
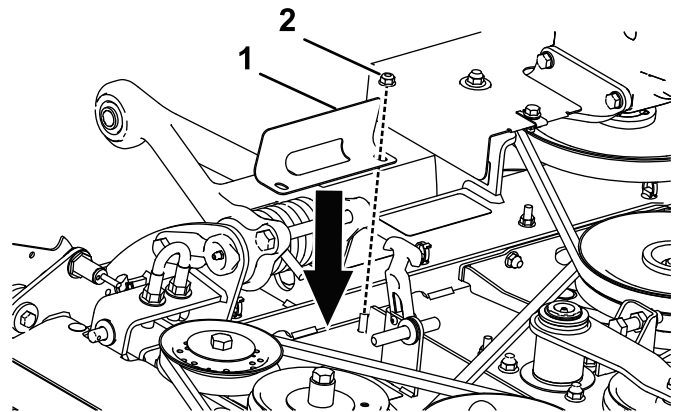
Parts needed for this procedure:

2	Front shield
---	--------------

Procedure

Install the left and right front shields onto the machine (Figure 3).

Note: Remove the nuts at the front of the left and right spindles and use them to install the front shields.



g026876

Figure 3

1. Front shield
2. Nut

4

Mounting the Side Shields

Parts needed for this procedure:

1	Right shield
1	Left shield

Procedure

1. Remove the left and right bumpers (Figure 4).

Note: Retain the bumpers to use them for securing the shields in place.

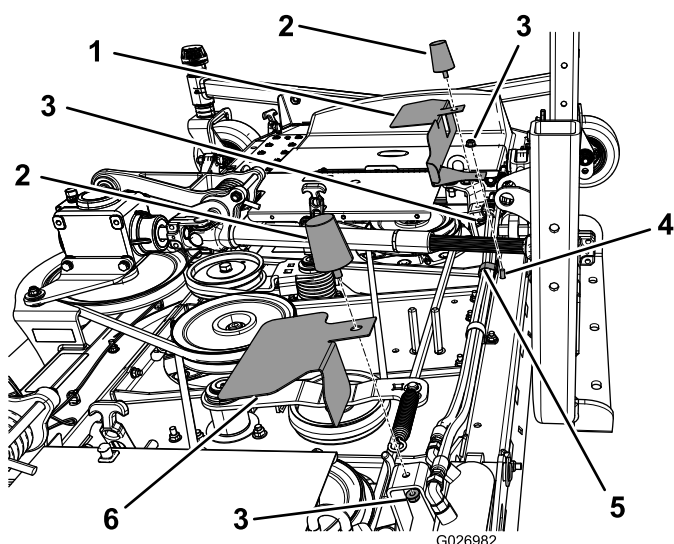


Figure 4

- | | |
|----------------|-----------------|
| 1. Left shield | 4. Bolt |
| 2. Bumper | 5. Hose clamp |
| 3. Nut | 6. Right shield |

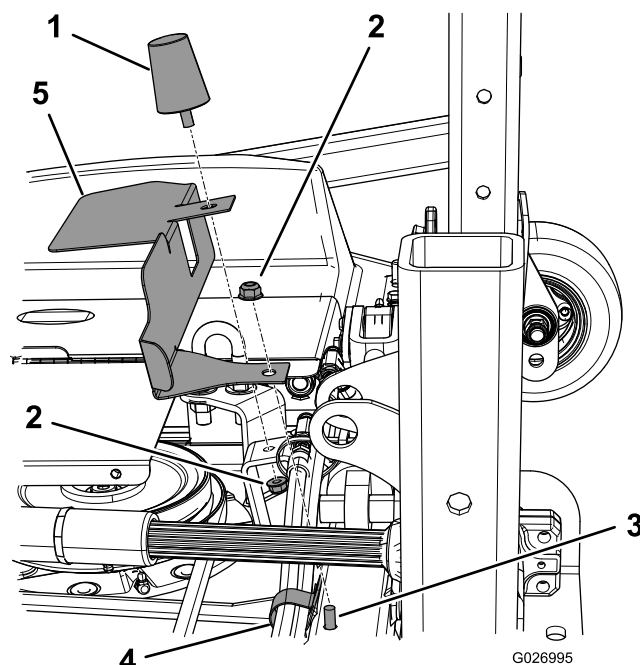


Figure 5

- | | |
|-----------|----------------|
| 1. Bumper | 4. Hose clamp |
| 2. Nut | 5. Left shield |
| 3. Bolt | |

2. Remove the nut from the hose clamp on the right side of the deck.
3. Install the shields as shown in Figure 4 and Figure 5.

Note: Position the left shield under the hose clamp and use the existing nut and bolt to secure both the shield and the hose clamp. Use an existing bumper and nut to secure each shield.

5

Installing the retainer nuts

Parts needed for this procedure:

2	Retainer nut
---	--------------

Procedure

Install the retainer nuts to the rear of the deck (Figure 6).

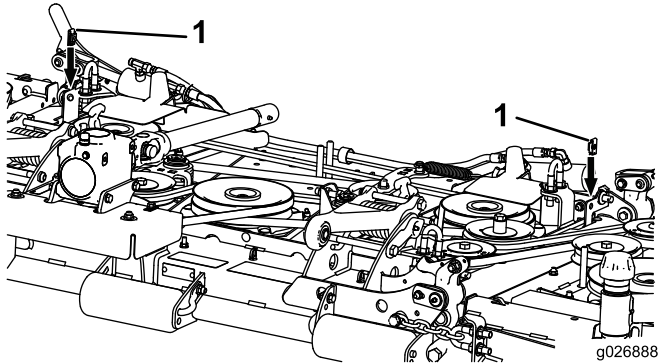


Figure 6

1. Retainer nut (2)

6

Mounting the Pivot Bracket

Parts needed for this procedure:

1	Pivot bracket
2	Bolt (3/8 inch)
2	Lock washer
1	Retainer nut

Procedure

1. Install the retainer nut to the pivot bracket (Figure 7).

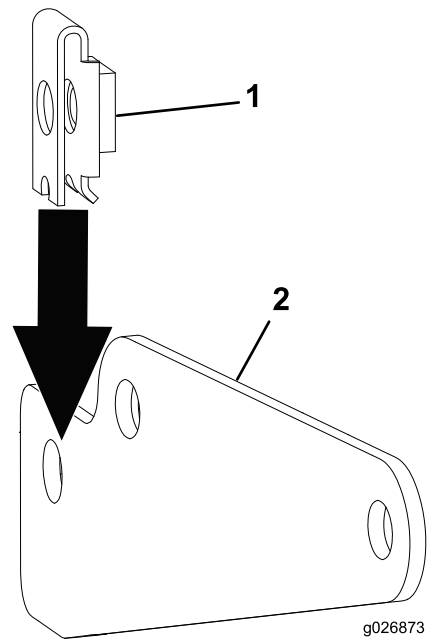


Figure 7

1. Retainer nut
2. Pivot bracket

2. Install the pivot bracket onto the gear box (Figure 8).

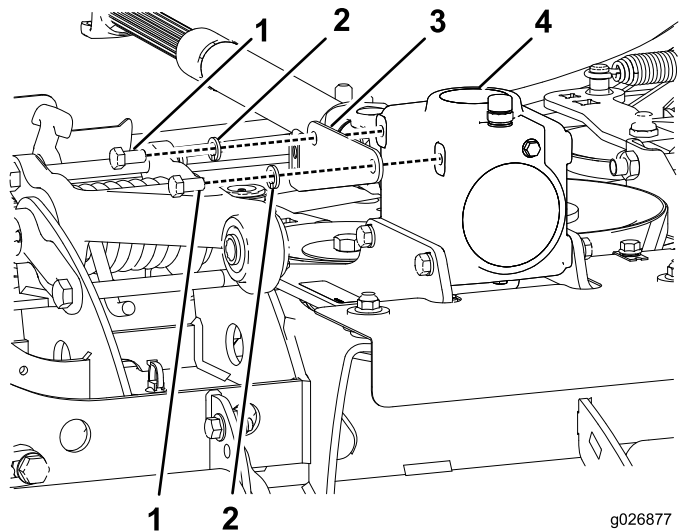


Figure 8

1. Bolt (3/8 inch)
2. Lock washer
3. Pivot bracket
4. Gear box

7

Mounting the Shield Guide

Parts needed for this procedure:

2	Shield guide
4	Flange nut

Procedure

1. Remove the left and right plastic covers.
2. Drill 2 holes—8.7 mm (0.344 inch)—in each plastic cover (Figure 9 and Figure 10).

Note: Use Figure 9 and Figure 10 to measure the 8.7 mm (0.344 inch) hole locations on the covers. Align the front hole in each cover with the edge of the step plate.

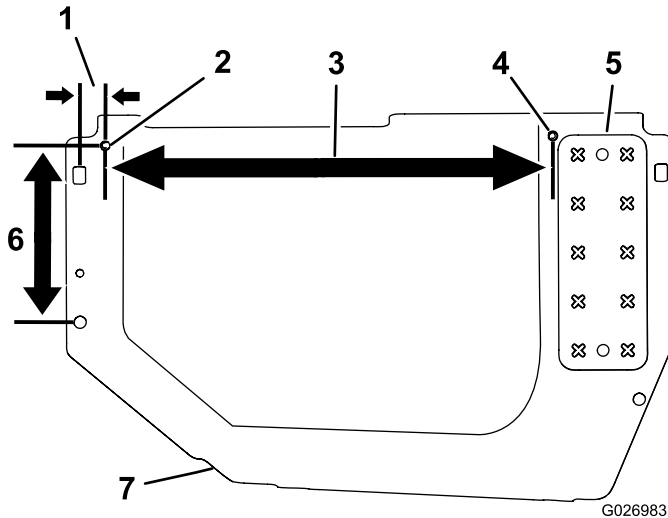


Figure 9

Right Plastic Cover

1. 3.3 cm (1.31 inch)
2. 8.7 mm (0.344 inch) holes
3. 57.8 cm (22.75 inches)
4. 8.7 mm (0.344 inch) holes
5. Step plate
6. 22.8 cm (9 inches)
7. Plastic cover

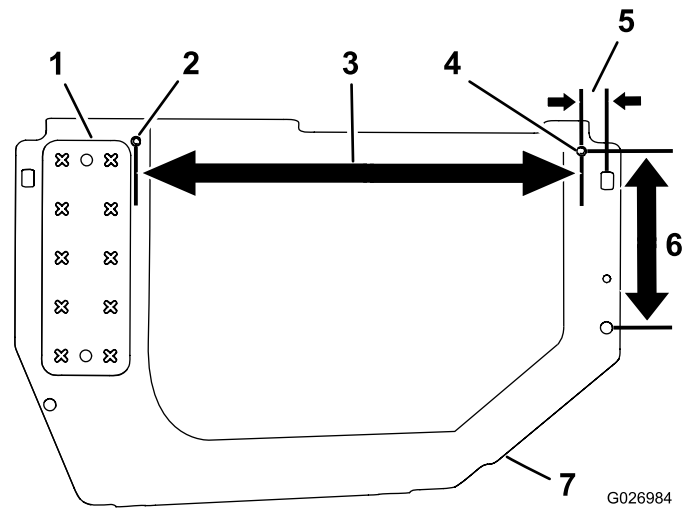


Figure 10

Left plastic cover

1. Step plate
2. 8.7 mm (0.344 inch) holes
3. 57.8 cm (22.75 inches)
4. 8.7 mm (0.344 inch) holes
5. 3.3 cm (1.31 inch)
6. 22.8 cm (9 inches)
7. Plastic cover

3. Install a shield guide to each cover (Figure 11).

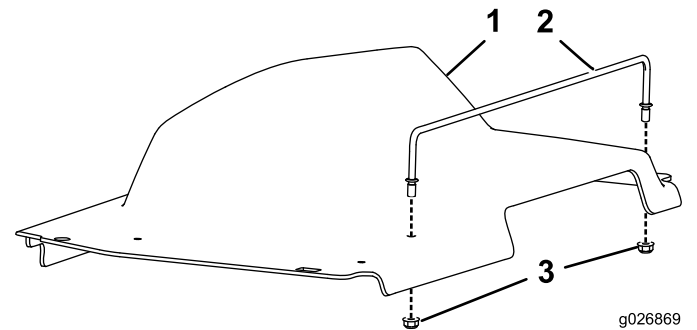


Figure 11

1. Plastic cover
2. Shield guide
3. Flange nut

4. Install a bolt and a push nut to the right plastic cover (Figure 12).

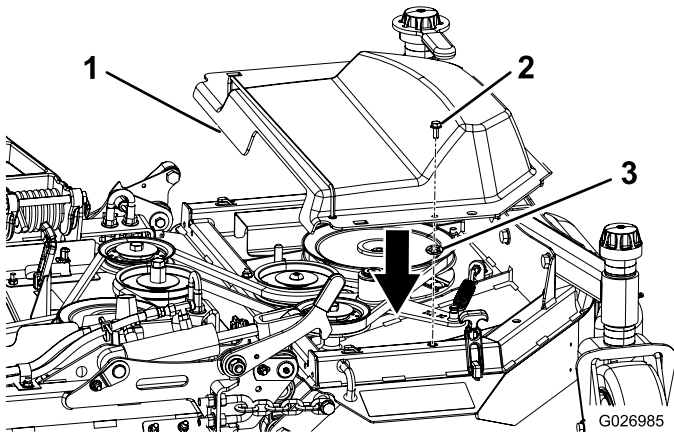


Figure 12

1. Plastic cover
2. Bolt
3. Push nut

5. Install a bolt and a push nut to the left plastic cover (Figure 13).

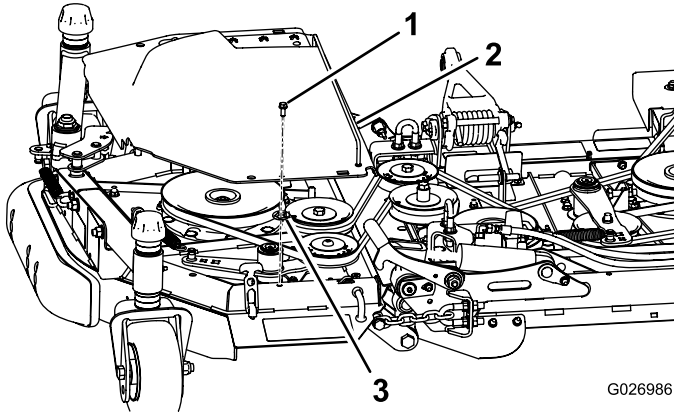


Figure 13

1. Bolt
2. Plastic cover
3. Push nut

8

Mounting the Right Cover

Parts needed for this procedure:

1	Right cover
3	Flange nut
3	Bolt
1	Push nut

Procedure

1. Remove the right cover shield from the machine.
2. Drill 2 holes—8.6 mm (0.340 inch)—into the right cover shield (Figure 14).

Note: Refer to Figure 14 and measure the 8.6 mm (0.340 inch) hole locations

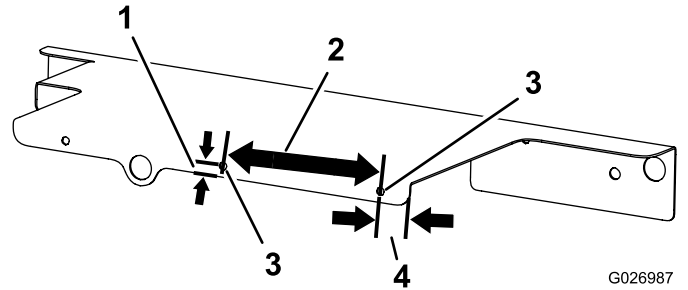


Figure 14

1. 9.65 mm (0.380 inches)
2. 15.2 cm (6 inches)
3. 8.6 mm (0.340 inch) drill hole
4. 2.84 cm (1.12 inch)

3. Install the right cover shield to the right cover (Figure 15).

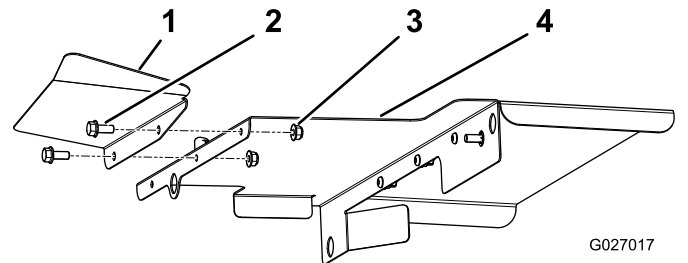


Figure 15

1. Right cover
2. Bolt (2)
3. Flange nut (2)
4. Right cover shield

4. Install a bolt and a push nut to the shield (Figure 16).

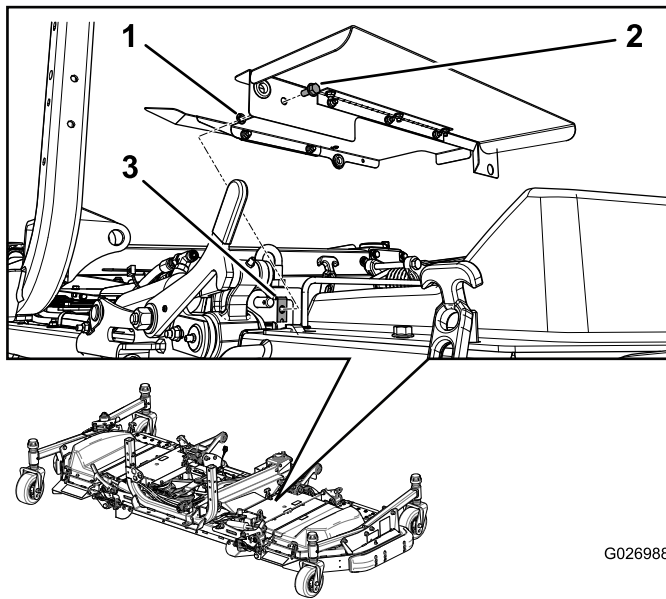


Figure 16

1. push nut
2. Bolt
3. Retainer nut

5. Install the combined covers onto the deck (Figure 16).

9

Mounting the Left Cover

Parts needed for this procedure:

1	Left cover
2	Retainer nut
3	Flange nut
3	Bolt
1	Push nut

Procedure

1. Remove the left cover shield from the machine.
2. Drill 3 holes—8.6 mm (0.34 inch)—into the left cover shield (Figure 17).

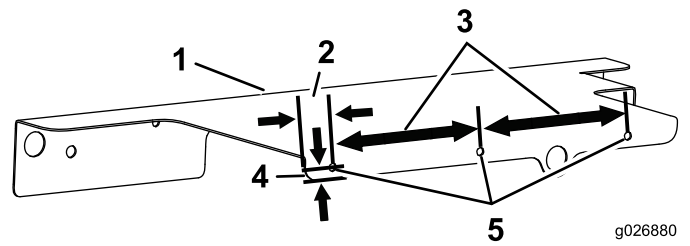


Figure 17

1. Left cover shield
2. 2.84 cm (1.12 inch)
3. 15.2 cm (6 inches)
4. 9.65 mm (0.380 inches)
5. 8.6 mm (0.340 inch) drill hole

3. Install 2 retainer nuts onto the left cover (Figure 18).

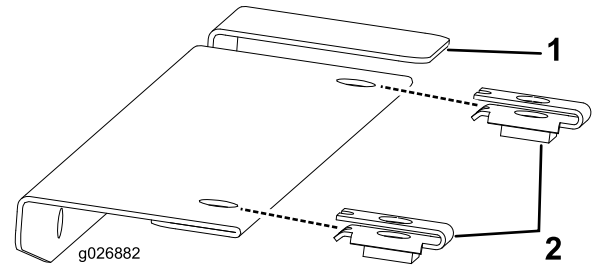


Figure 18

1. Left cover
2. Retainer nuts

4. Install the left cover shield to the left cover (Figure 19).

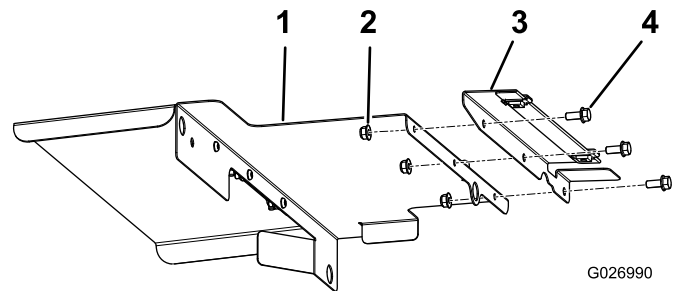


Figure 19

1. Left cover shield
2. Flange nut (3)
3. Left cover
4. Bolt (3)

5. Install a bolt and a push nut to the shield (Figure 20).

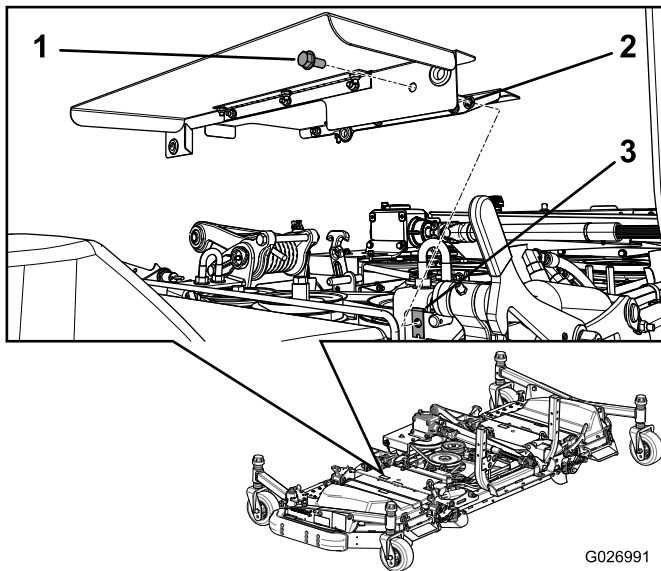


Figure 20

- 1. Bolt
- 2. Push nut
- 3. Retainer nut (previously installed)

6. Install the combined covers onto the deck (Figure 20).

10

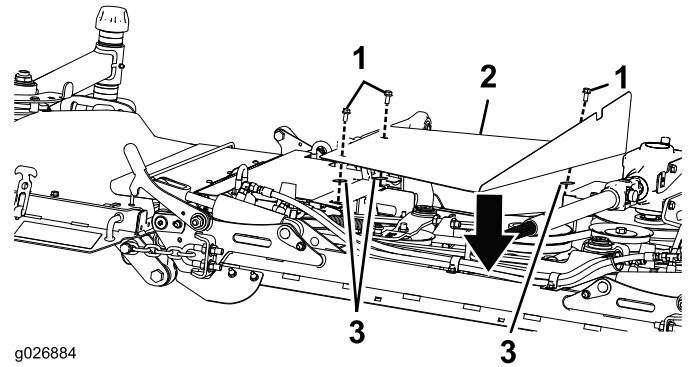
Mounting the Center Cover (Groundsmaster 7210 Only)

Parts needed for this procedure:

1	Center cover
3	Push nut
3	Bolt

Procedure

Install the center cover onto the deck (Figure 21).



g026884

Figure 21

- 1. Bolts
- 2. Center cover
- 3. Push nuts

11

Mounting the Shield Support

Parts needed for this procedure:

1	Shield support (Groundsmaster 7210)
1	Shield support (Groundsmaster 360)
1	Hex-head screw (5/16 x 4 inches)
1	Washer
1	Flange nut

Mounting the Shield Support on a Groundsmaster 7210

Install the shield support to the right side of the frame with a hex-head screw, a washer, and a flange nut. Use the large hole in the front of the frame for the installation. The tab on the shield goes into the small hole in the frame (Figure 22).

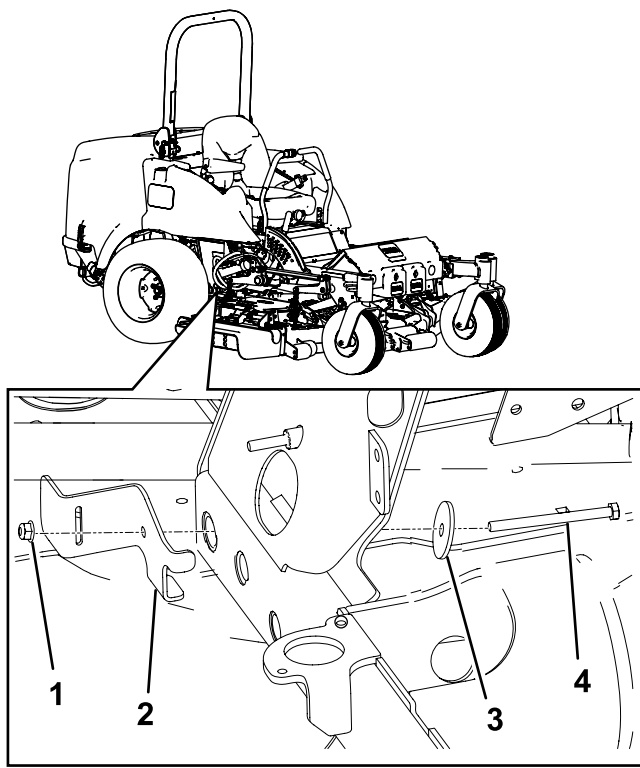


Figure 22

- | | |
|-------------------|-------------------------------------|
| 1. Flange nut | 3. Washer |
| 2. Shield support | 4. Hex-head screw (5/16 x 4 inches) |

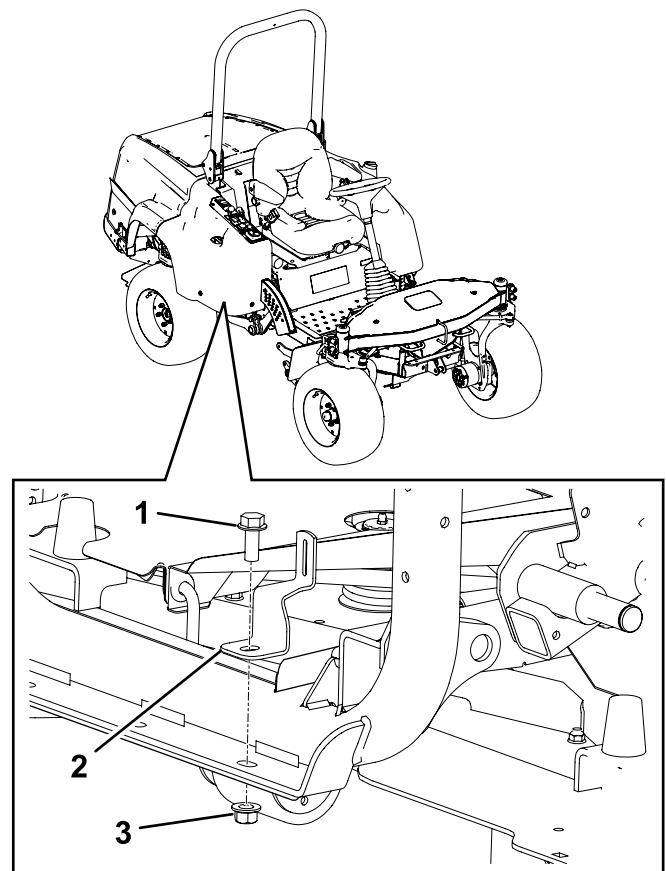


Figure 24

- | | |
|-------------------|--------|
| 1. Bolt | 3. Nut |
| 2. Shield support | |

Mounting the Shield Support on a Groundmaster 360

1. On the right side of the machine, remove the nut and the bolt securing the rear frame to the front frame (Figure 23).

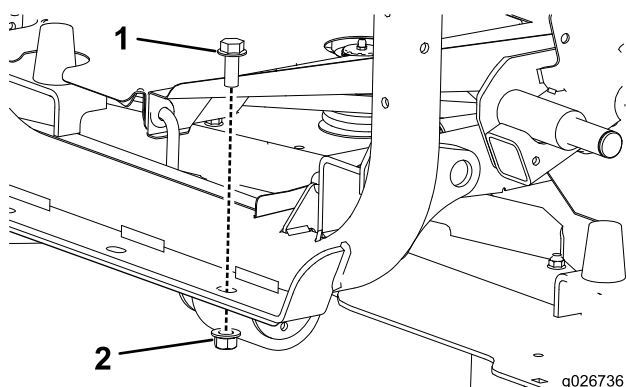


Figure 23

- | | |
|---------|--------|
| 1. Bolt | 2. Nut |
|---------|--------|

2. Install the shield support to the right side of the frame with the nut and bolt, removed in the previous step (Figure 24).

12

Mounting the Driveshaft Shield

Parts needed for this procedure:

1	Driveshaft shield
1	Shoulder bolt
1	Washer (0.469 x 0.922 inch)
1	Push nut

Procedure

1. Install a bolt, the washer, and a push nut to the shield.

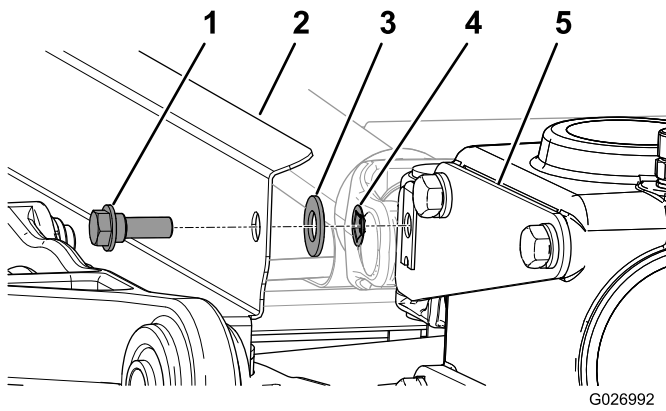


Figure 25

- | | |
|--------------------------------|------------------|
| 1. Shoulder bolt | 4. Push nut |
| 2. Driveshaft shield | 5. Pivot bracket |
| 3. Washer (0.469 x 0.922 inch) | |

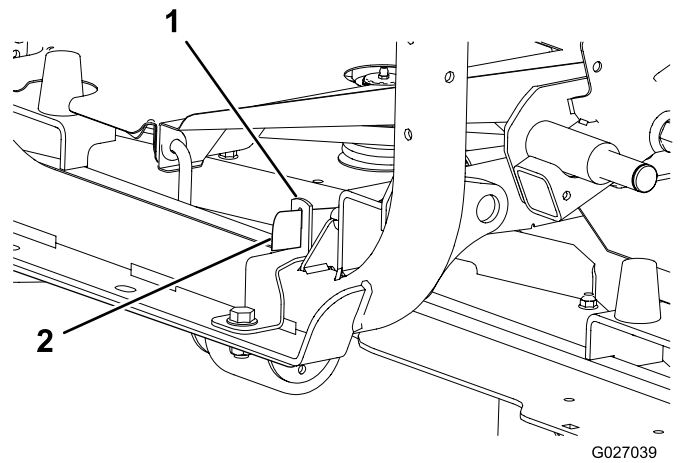


Figure 27
Groundsmaster 360

- | | |
|-------------------|----------------------|
| 1. Shield support | 2. Driveshaft shield |
|-------------------|----------------------|

2. Install the driveshaft shield through the slot in the shield support installed in procedure 11 Mounting the Shield Support (page 9); refer to Figure 26 or Figure 27.

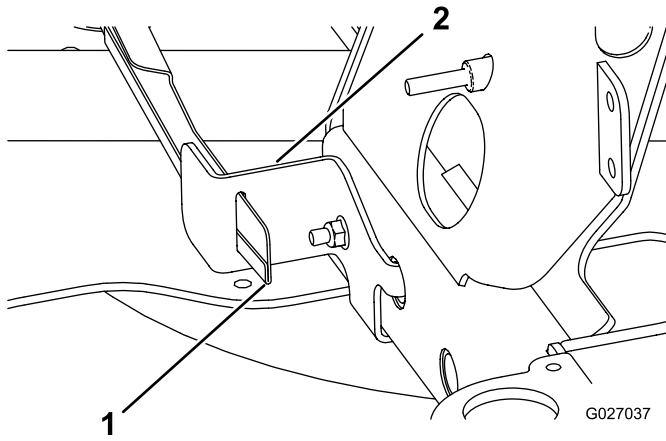


Figure 26
Groundsmaster 7210

- | | |
|-------------------|----------------------|
| 1. Shield support | 2. Driveshaft shield |
|-------------------|----------------------|



Count on it.