



Wheel Tooth Kit

SGR-13 Stump Grinder

Model No. 130-2221

Form No. 3386-762 Rev A

Installation Instructions

Installing the Kit

Due to the high amount of wear placed on the teeth, rotate and replace them periodically.

To install a tooth, align 1 of the 3 flat sides with the flat side on the cutting wheel. Secure the tooth with a washer and nut and torque the nut to 37 to 45 N-m (27 to 33 ft-lb).

Each tooth is indexed with 3 positions so that you can rotate it twice, exposing a new sharp edge before replacing the tooth. To rotate a tooth, loosen the nut securing the tooth (Figure 1). Push the tooth forward and rotate it 1/3 of a turn, bringing an unused edge to the outside. Torque the nut securing the tooth to 37 to 45 N-m (27 to 33 ft-lb).

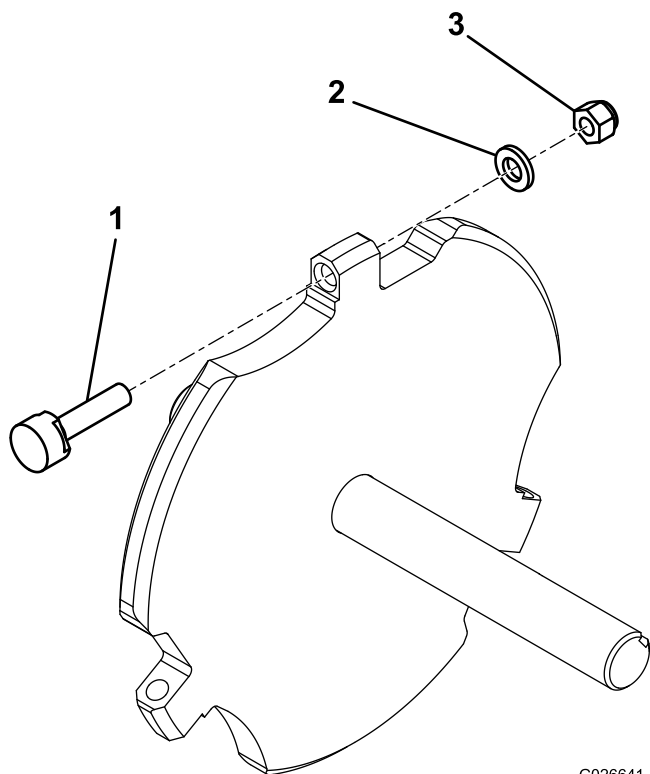


Figure 1

- 1. Tooth
- 2. Washer
- 3. Nut

