



Hitch Kit

Selected Groundsmaster® Machines

Model No. 130-8716

Model No. 130-8717

Model No. 130-8718

Installation Instructions

⚠ WARNING

CALIFORNIA

Proposition 65 Warning

This product contains a chemical or chemicals known to the State of California to cause cancer, birth defects, or reproductive harm.

This kit is designed for the following machines:

- Groundsmaster® 360 Multi-Purpose Machine
- Groundsmaster® 7200/7210 Series Traction Unit with Kubota engine
- Groundsmaster® 7200/7210 Series Traction Unit with Yanmar engine

Safety

- Attach towed equipment only at the hitch point.
- Never allow children or others in or on the towed equipment.
- Do not exceed the maximum weight for the conditions as given in these instructions.
- The weight of the towed equipment may cause loss of traction and loss of control on slopes.
- Travel slowly while towing and allow extra distance to stop.

Installation

Loose Parts

Use the chart below to verify that all parts have been shipped.

Description	Qty.	Use
Latch-locator bracket	1	Install the hitch.
Bolt (5/16 x 3/4 inch)	1	
Locknut (5/16 inch)	1	
Locking latch	1	
Hood support	1	
Bolt (5/16 x 2 inches)	2	
Washer (5/16 inch)	4	
Locknut (5/16 inch)	2	

Note: Determine the left and right sides of the machine from the normal operating position.



Installing the Hitch

Install the hitch to your machine as shown in [Figure 1](#), [Figure 2](#), or [Figure 3](#):

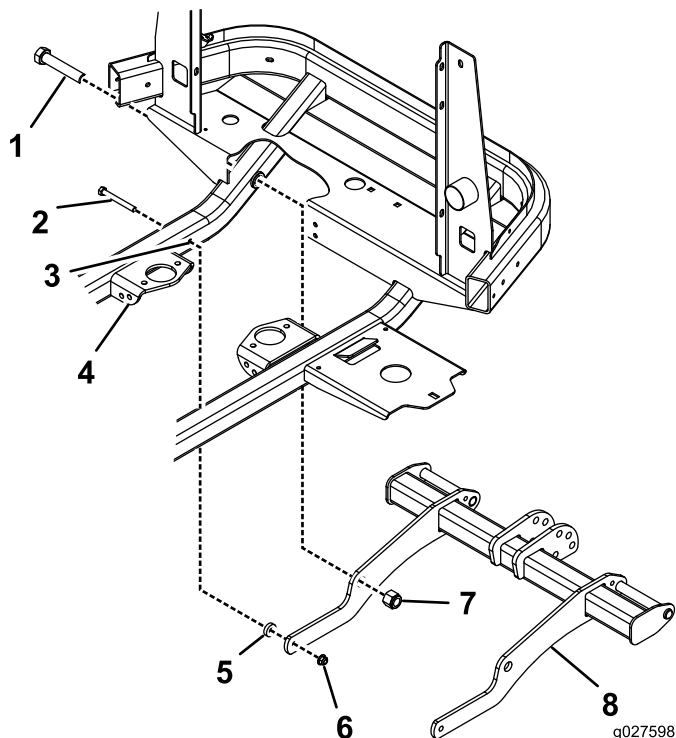
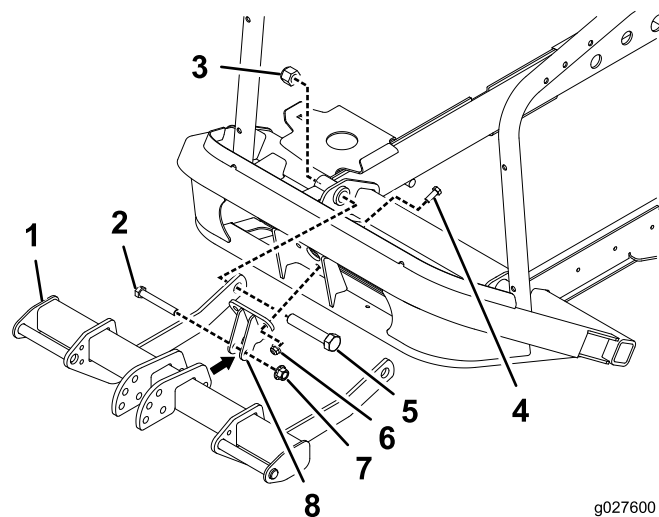


Figure 1

Hitch for the Groundsmaster 360 Multi-Purpose Machine (Model 130-8716)

- | | |
|------------------------------|---------------|
| 1. Bolt (3/4 x 4 inches) | 5. Spacer |
| 2. Bolt (3/8 x 3-1/4 inches) | 6. Flange nut |
| 3. Drill a hole here. | 7. Locknut |
| 4. Engine-mount bracket | 8. Hitch |

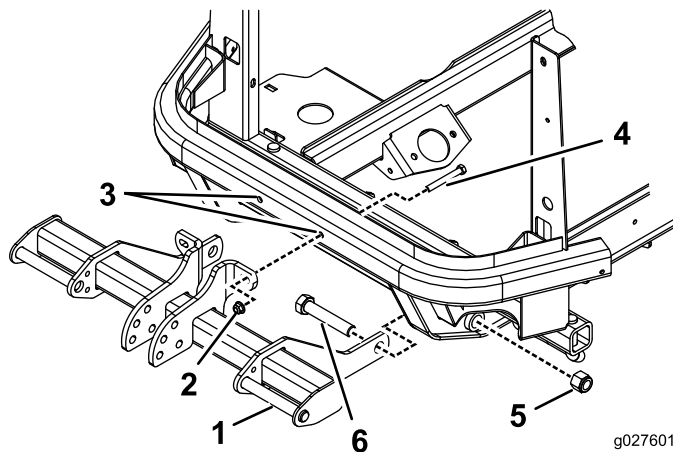


g027600

Figure 2

Hitch for the Groundsmaster 7200/7210 Series Traction Unit with the Kubota engine (Model 130-8717)

- | | |
|------------------------------|--------------------------|
| 1. Hitch | 5. Bolt (3/4 x 4 inches) |
| 2. Bolt (1/2 x 3-1/2 inches) | 6. Flange nut |
| 3. Locknut | 7. Locknut |
| 4. Bolt (3/8 x 1 inch) | 8. Link mount |



g027601

Figure 3

Hitch for the Groundsmaster 7200/7210 Series Traction Unit with the Yanmar engine (Model 130-8718)

- | | |
|-------------------------------------------------------------------------|--------------------------|
| 1. Hitch | 4. Bolt (3/8 x 3 inches) |
| 2. Flange nut | 5. Locknut |
| 3. Drill 2 holes (that allow a 3/8-inch bolt to fit through each) here. | 6. Bolt (3/4 x 4 inches) |

Operation

To properly configure your machine and attachments, refer to [Figure 4](#) and use 1 of the following charts below:

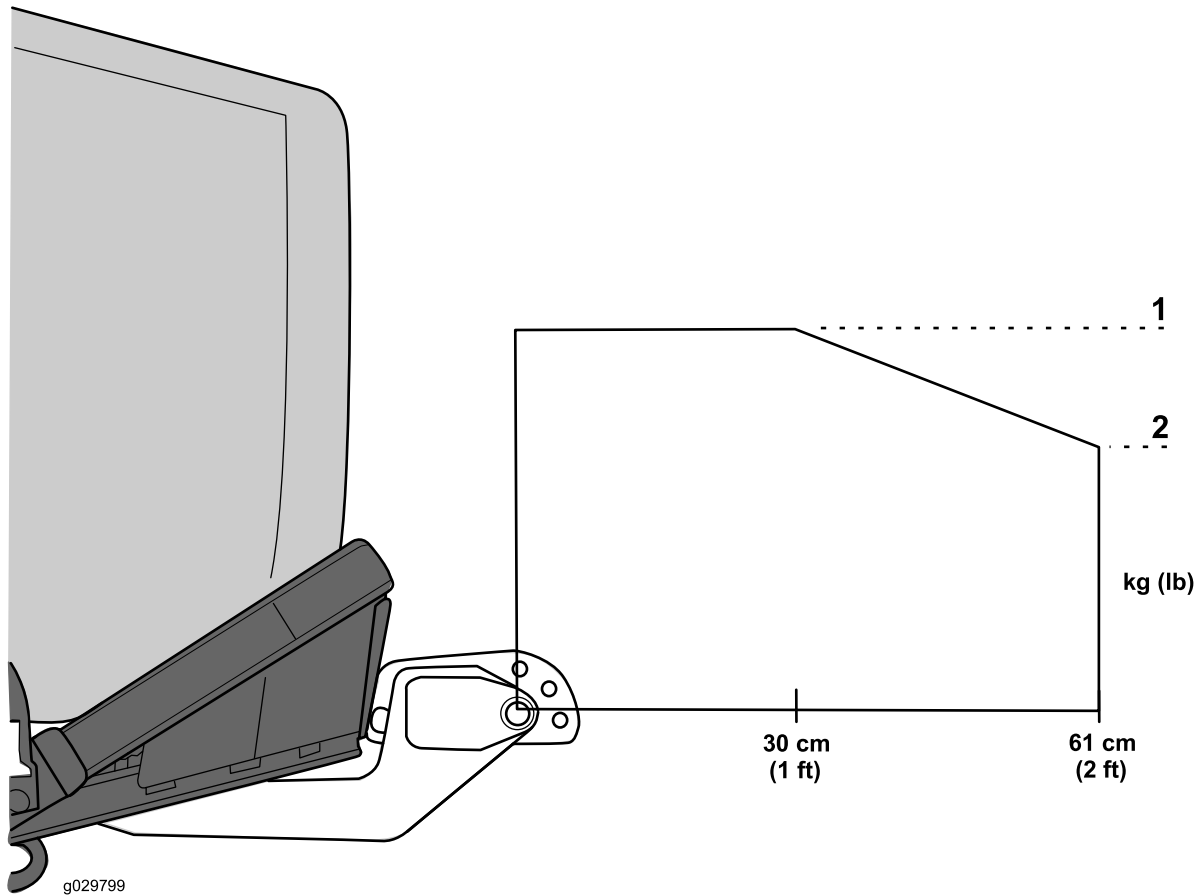


Figure 4

Maximum weight of attachment within 61 cm (2 ft) from the hitch

1. Maximum 1: The maximum weight of the attachment within 30 cm (1 ft) from the hitch
2. Maximum 2: The maximum weight of the attachment within 61 cm (2 ft) from the hitch

Groundsmaster 7200 Summer Machines

Series and Models		Required Front-Weight Bracket	Front Weight Requirements	Maximum Weight of the Attachment within 30 cm (1 ft) from the Hitch (Maximum 1)	Maximum Weight of the Attachment within 61 cm (2 ft) from the Hitch (Maximum 2)	For Machines with the Universal Sunshade	
						Maximum Weight of the Attachment within 30 cm (1 ft) from the Hitch (Maximum 1)	Maximum Weight of the Attachment within 61 cm (2 ft) from the Hitch (Maximum 2)
Series 7200/7210 with Kubota Engine and 72-inch deck	Models 30487 or 30495 with Models 30354, 30481, or 30353	125-2670	4 Front-frame weights (125–2655–03) and 3 suitcase weights (114–4096) or 5 suitcase weights (114–4096)	150 kg (330 lb)	125 kg (275 lb)	141 kg (310 lb)	118 kg (260 lb)
Series 7200/7210 with Kubota Engine and 62-inch deck	Models 30487 or 30495 with Models 30456 or 30457	125-2670	4 Front-frame weights (125–2655–03) and 3 suitcase weights (114–4096) or 5 suitcase weights (114–4096)	136 kg (300 lb)	113 kg (250 lb)	125 kg (275 lb)	104 kg (230 lb)
Series 7200/7210 with Yanmar Engine and 72-inch deck	Model 30695 with Models 30354, 30481, or 30353	125-2670	4 Front-frame weights (125–2655–03) and 5 suitcase weights (114–4096)	136 kg (300 lb)	113 kg (250 lb)	125 kg (275 lb)	104 kg (230 lb)
Series 7200/7210 with Yanmar Engine and 62-inch deck	Model 30695 with Models 30456 or 30457	125-2670	4 Front-frame weights (125–2655–03) and 5 suitcase weights (114–4096)	120 kg (265 lb)	100 kg (220 lb)	116 kg (255 lb)	98 kg (215 lb)

Groundsmaster 360 Machines

Series and Models		Front Attachment	Maximum Weight of the Attachment within 30 cm (1 ft) from the Hitch (Maximum 1)	Maximum Weight of the Attachment within 61 cm (2 ft) from the Hitch (Maximum 2)
Series 360, 4WD, without a deck, with front QAS	Models 31223 and 31200 with Model 30509	None	55 kg (122 lb)	46 kg (101 lb)
		Erskine snowthrower, MB Dozer straight blade, MB-Powered V-plow, MB Broom, Mini Max Flail Mower, First Products Aera-Vator, Toro Pro Force Blower (Model 44547)	181 kg (400 lb)	159 kg (350 lb)
		Toro V-plow (Model 30750)	136 kg (300 lb)	113 kg (250 lb)
Series 360, 4WD, without a deck, with front QAS, with a cab	Models 31236 and 31202 with Model 30509	None	No weight is allowed.	No weight is allowed.
		Erskine snowthrower, MB Dozer straight blade, MB-Powered V-plow, MB Broom, Mini Max Flail Mower, First Products Aera-Vator, Toro Pro Force Blower (Model 44547)	159 kg (350 lb)	136 kg (300 lb)
		Toro V-plow (Model 30750)	91 kg (200 lb)	68 kg (150 lb)
Series 360, 4WD, without a deck, with front QAS and a winter enclosure	Models 31223 and 31200 with Models 30509 and 31220	None	No weight is allowed.	No weight is allowed.
Series 360, 4WD, without a deck, with front QAS and a winter enclosure	Models 31223 and 31200 with Models 30509 and 31220	Erskine snowthrower, MB Dozer straight blade, MB-Powered V-plow, MB Broom, Mini Max Flail Mower, First Products Aera-Vator	159 kg (350 lb)	136 kg (300 lb)
Series 360, 4WD, with 72-inch deck	Models 31223 and 31200 with Model 30354, 30481, or 30252	None	77 kg (170 lb)	59 kg (130 lb)
Series 360, 4WD, with 100-inch deck	Models 31223 and 31200 with Model 31101	None	136 kg (300 lb)	113 kg (250 lb)
Series 360, 4WD, with 72-inch deck	Models 31230 and 31201 with Model 30354, 30481, or 30353	None	55 kg (122 lb)	46 kg (101 lb)
Series 360, 4WD, with 100-inch deck	Model 31230 with Model 31101	None	91 kg (200 lb)	68 kg (150 lb)

Notes:

Notes:



Count on it.