



Valve Repair Kit

2015 and after Multi Pro® Series Turf Sprayer

Model No. 130-7304

Installation Instructions

⚠ WARNING

CALIFORNIA Proposition 65 Warning

This product contains a chemical or chemicals known to the State of California to cause cancer, birth defects, or reproductive harm.

Installation

Loose Parts

Use the chart below to verify that all parts have been shipped.

Procedure	Description	Qty.	Use
1	No parts required	–	Prepare to install the valve repair kit.
2	Outlet fitting O-ring (0.737 inch / 0.103 inch) Endcap seal O-ring (0.796 inch / 0.139 inch) Back seating O-ring (0.676 inch / 0.07 inch) Valve seat Valve stem O-ring (0.299 inch / 0.103 inch) Thrust washer Stem retainer Stem capture retainer	2 2 2 2 2 1 1 1	Install the valve repair kit.



1

Preparing to Install the Valve Repair Kit

No Parts Required

Procedure

1. Move the machine to a level surface and set the parking brake.
2. Rinse the plumbing system in the machine, refer to the *Operator's Manual* for the machine; be sure to cycle the valve during the rinse by turning the valve on and off several times.

Note: There may be fluid trapped between the ball and valve body.

3. Turn off the engine and remove the key.
4. Disconnect the valve actuator or handle and rinse it off.
5. Remove the plastic hairpin from the valve actuator or handle by squeezing the 2 pin legs together while pushing the pin forward.
6. Remove the valve actuator or handle.
7. Loosen the V-clamp to free the manifold section with the valve that needs to be replaced.
8. Remove the endcap O-ring

Note: 2 V-clamps and 2 O-rings may need to be removed.

9. Position the valve stem so that it is closed (Box B; [Figure 1](#)).

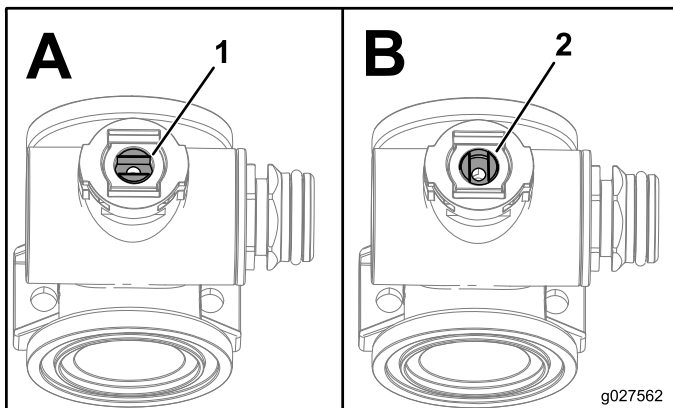


Figure 1

1. Valve open
2. Valve closed

10. Remove the quick connect endcap.
11. Remove the valve seat O-ring, back seating O-ring, endcap seal O-ring, and the outlet fitting O-ring ([Figure 2](#)).

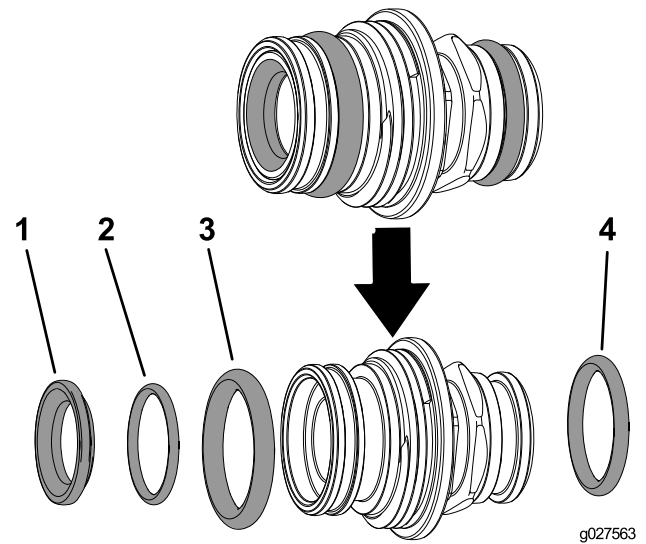


Figure 2

1. Valve seat O-ring
2. Back seating O-ring
3. Endcap seal O-ring
4. Outlet fitting O-ring

12. Turn the valve stem so that the ball is in the open position (Box A; [Figure 1](#)).

Note: The valve stem will be parallel with the valve flow and the ball will slide out.

13. Remove the stem capture retainer (Box A; [Figure 3](#)).
14. Reach into the valve body and remove the valve stem assembly (Box A; [Figure 3](#)).

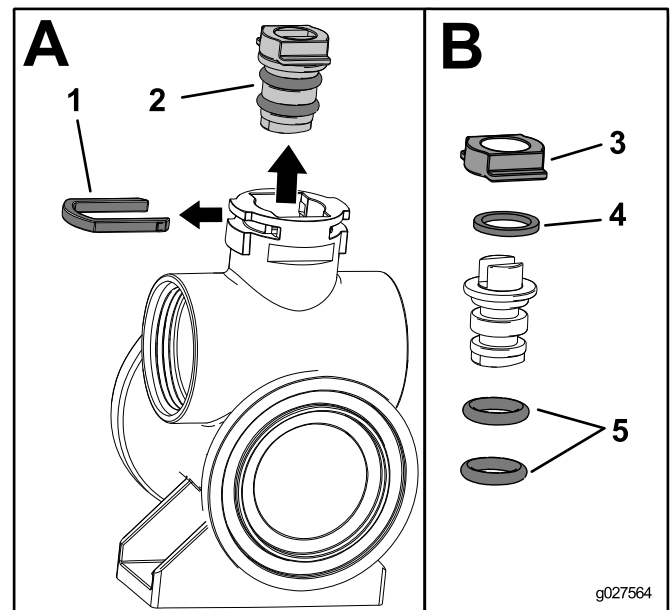


Figure 3

1. Stem capture retainer
2. Valve stem
3. Stem retainer
4. Thrust washer
5. Valve stem O-rings

15. Remove the stem retainer, thrust washer, and the 2 valve stem O-rings from the valve stem (Box B; [Figure 3](#)).

2

Installing the Valve Repair Kit

Parts needed for this procedure:

2	Outlet fitting O-ring (0.737 inch / 0.103 inch)
2	Endcap seal O-ring (0.796 inch / 0.139 inch)
2	Back seating O-ring (0.676 inch / 0.07 inch)
2	Valve seat
2	Valve stem O-ring (0.299 inch / 0.103 inch)
1	Thrust washer
1	Stem retainer
1	Stem capture retainer

Procedure

1. Apply grease to the valve stem and install the new valve stem O-rings onto the valve stem (Box A; Figure 4).

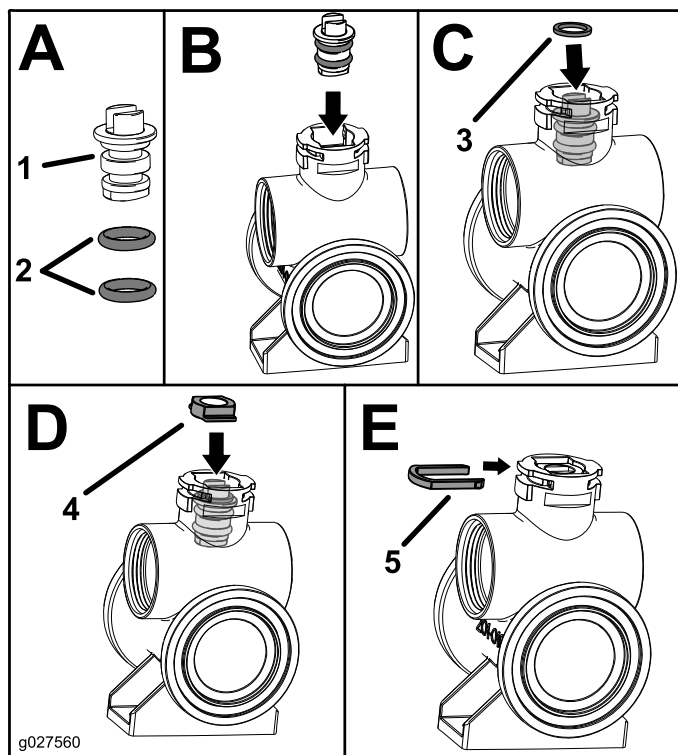


Figure 4

1. Valve stem
2. Valve stem O-ring (0.299 inch / 0.103 inch)
3. Thrust washer
4. Stem retainer
5. Stem capture retainer

2. Install the valve stem assembly into the valve body (Box B; Figure 4).

Note: Ensure that the valve stem assembly is in the open position (Box A; Figure 5).

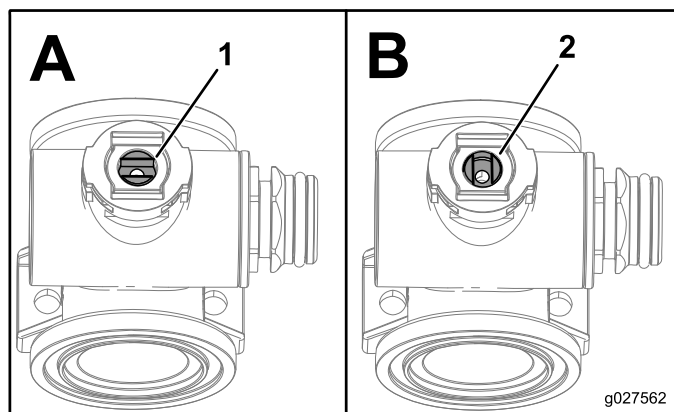


Figure 5

1. Valve open
2. Valve closed

3. Install the thrust washer onto the valve stem assembly (Box C; Figure 4).
4. Install the stem retainer on to the valve stem assembly (Box D; Figure 4).
5. Install the stem retainer hair pin (Box E; Figure 4).
6. Install the back seating O-ring and the valve seat into the endcap fitting (Box A; Figure 6).

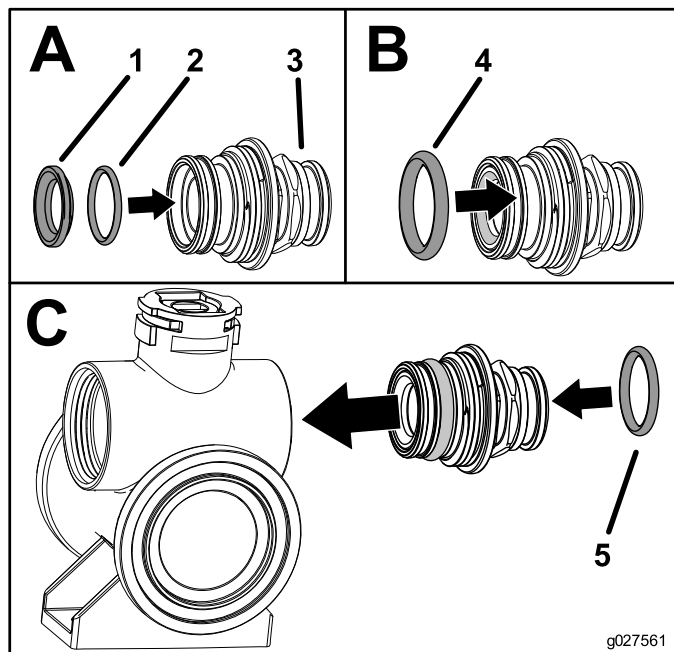


Figure 6

1. Valve seat
2. Back seating O-ring (0.676 inch / 0.07 inch)
3. Endcap fitting
4. Endcap seal O-ring (0.796 inch / 0.139 inch)
5. Outlet fitting O-ring (0.737 inch / 0.103 inch)

7. Install the endcap seal O-ring onto the endcap fitting (Box B; Figure 6).

8. Install the assembled fitting onto the valve body until the endcap fitting flange touches the valve body, then turn the valve an additional 1/8 to 1/4 turn (Box C; [Figure 6](#)).

Note: Use caution so as not to damage the end of the fitting.

9. Install the outlet fitting O-ring onto the hose fitting (Box C; [Figure 6](#)).
10. Insert the ball into the valve body ([Figure 7](#)).

Note: The valve stem should fit inside the ball drive slot. If the valve stem does not fit, adjust the ball.

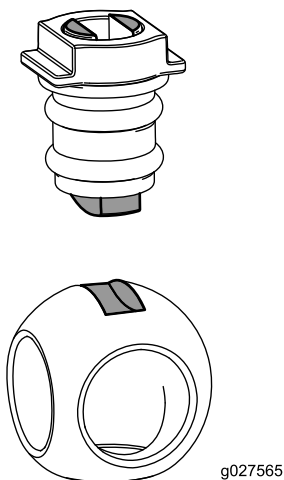


Figure 7

-
11. Turn the valve stem assembly so that the valve is closed (Box B; [Figure 5](#)).
 12. Repeat steps 6 to 9 to install the other side of the valve assembly.
 13. Insert the flange endcap O-ring, that was removed in step 8 of Section 1 [Preparing to Install the Valve Repair Kit](#) (page 2), into the manifold piece.
 14. Secure the manifold piece to the manifold assembly with the V-clamp(s).

Note: Ensure that the V-clamp is around the flanged edges of the independent manifold pieces.

15. Place the actuator on top of the valve.

Note: The valve stem may need to be moved slightly so that the actuator can slide back into place.

16. Secure the actuator to the valve assembly using the plastic hairpin removed in step 5 of section 1 [Preparing to Install the Valve Repair Kit](#) (page 2).
17. Rotate the valve 2 complete turns to ensure that all parts are connected properly.
18. Connect the actuator.