



Form No. 3377-603 Rev B

**Count on it.**

# Parts Catalog

## Trailer Light Kit Side-Dump Mixers

Model No. 68062



# Ordering Replacement Parts

To order replacement parts, please supply the part number, the quantity, and the description of each part desired.

## Understanding Reference Numbers

Each identified part in an illustration has a reference number. The reference number for a part also appears in the parts list, along with other information about the part.

This catalog uses two special reference number formats, one to indicate parts in a service assembly and another to indicate the quantity of a given part in an illustration.

## Service Assembly Reference Numbers

Parts in service assemblies have reference numbers in the form a:b. The a represents the reference number of the entire service assembly and the b represents a sequential number unique to each part within the service assembly.

For example, a wheel assembly might be identified by reference number 6, the tire by 6:1, the valve by 6:2, and the wheel by 6:3. When you order the assembly identified by reference number 6, you receive all parts identified by reference numbers 6:1, 6:2, and 6:3. However, you may also order any part individually. Reference numbers of this type appear in illustration and in parts lists.

## Reference Numbers Indicating Quantity

In an illustration, if a reference number indicates more than one part, the reference number has the form nX y. The n represents the quantity of the part, the X is the multiplication symbol, and the y represents the reference number.

For example, in an illustration, the reference number 2X 37 means that two of the parts identified by reference number 37 are indicated.

# List of Abbreviations

**AR:** as required

**ASM:** assembly

**BBC:** blade brake control

**BHTF:** button head thread forming

**CARR:** carriage

**CCW:** counter clockwise

**CW:** clockwise

**DEG:** degrees

**DPA:** Dual Point Adjustment

**ECM:** electronic control module

**EXT:** external

**FH:** flat head

**GA:** gauge

**HD:** heavy-duty

**HF:** hex flange

**HH:** hex head

**HHF:** hex head flange

**HHFTF:** hex head flange thread forming

**HJ:** hex jam

**HLH:** hex lag head

**HOC:** height-of-cut

**HP:** high pressure

**HSBH:** hex socket button head

**HSFH:** hex socket flat head

**HSH:** hex socket head

**HWH:** hex washer head

**HWHTF:** hex washer head thread forming

**HYD:** hydraulic

**LH:** left hand

**LP:** low pressure

**LPG:** Liquefied Petroleum Gas

**NI:** nylon insert

**NPTF:** national pipe thread fine

**PFH:** phillips flat head

**PPH:** phillips pan head

**PPHTF:** phillips pan head thread forming

**PRH:** phillips round head

**PTH:** phillips truss head

**PTO:** power-take-off

**RH:** right hand

**ROPS:** roll-over protection system

**RRB:** rear roller brush

**SFH:** slotted fillister head

**SHH:** slotted hex head

**SHWH:** slotted hex washer head

**SPH:** slotted pan head

**SQH:** square head

**SRH:** slotted round head

**STD:** standard

**TAP:** self tapping

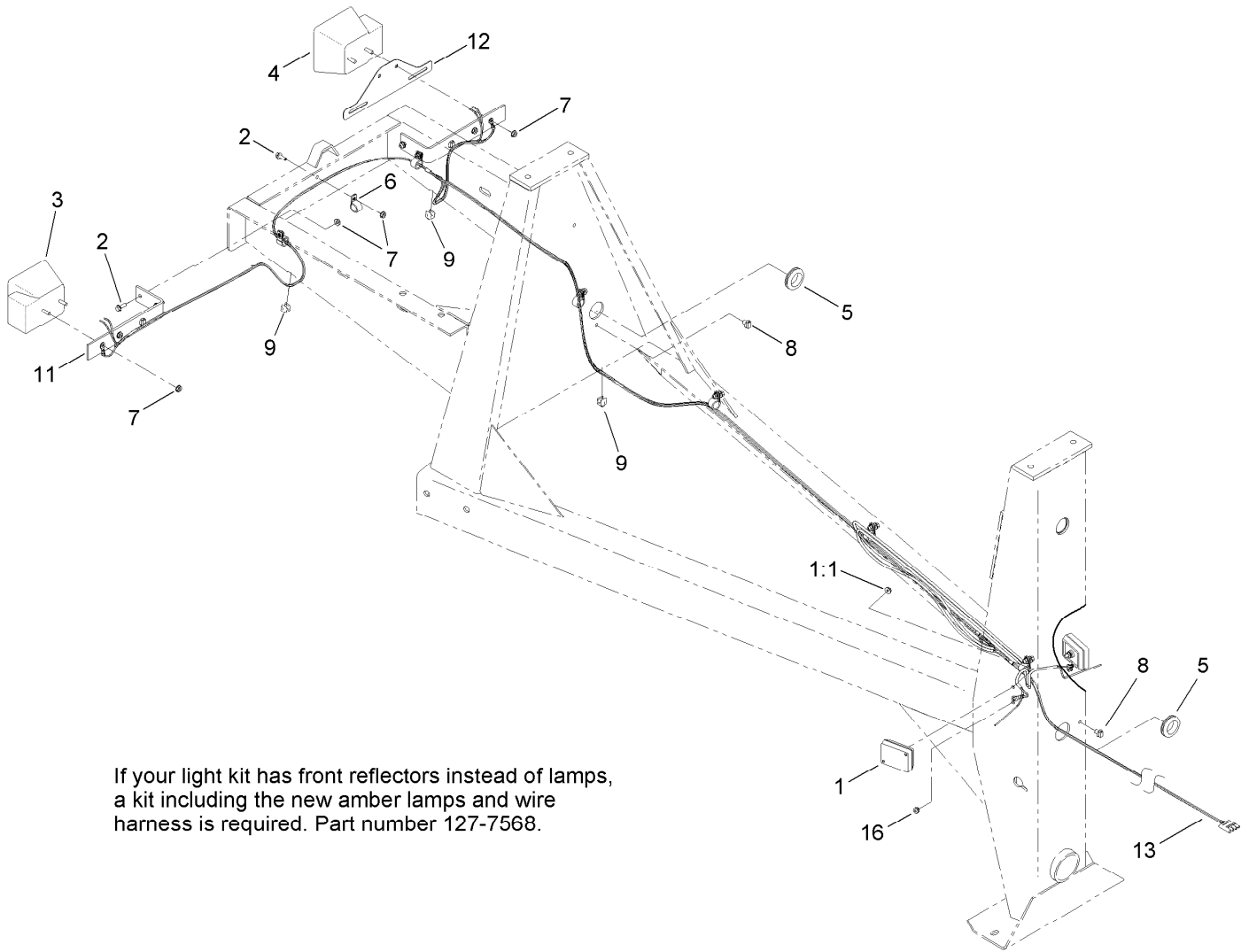
**TTH:** torx truss head

# Contents

Concrete Mixer Tail Light and Harness Assembly . . . . . 4

Mortar Mixer Tail Light and Harness Assembly . . . . . 5

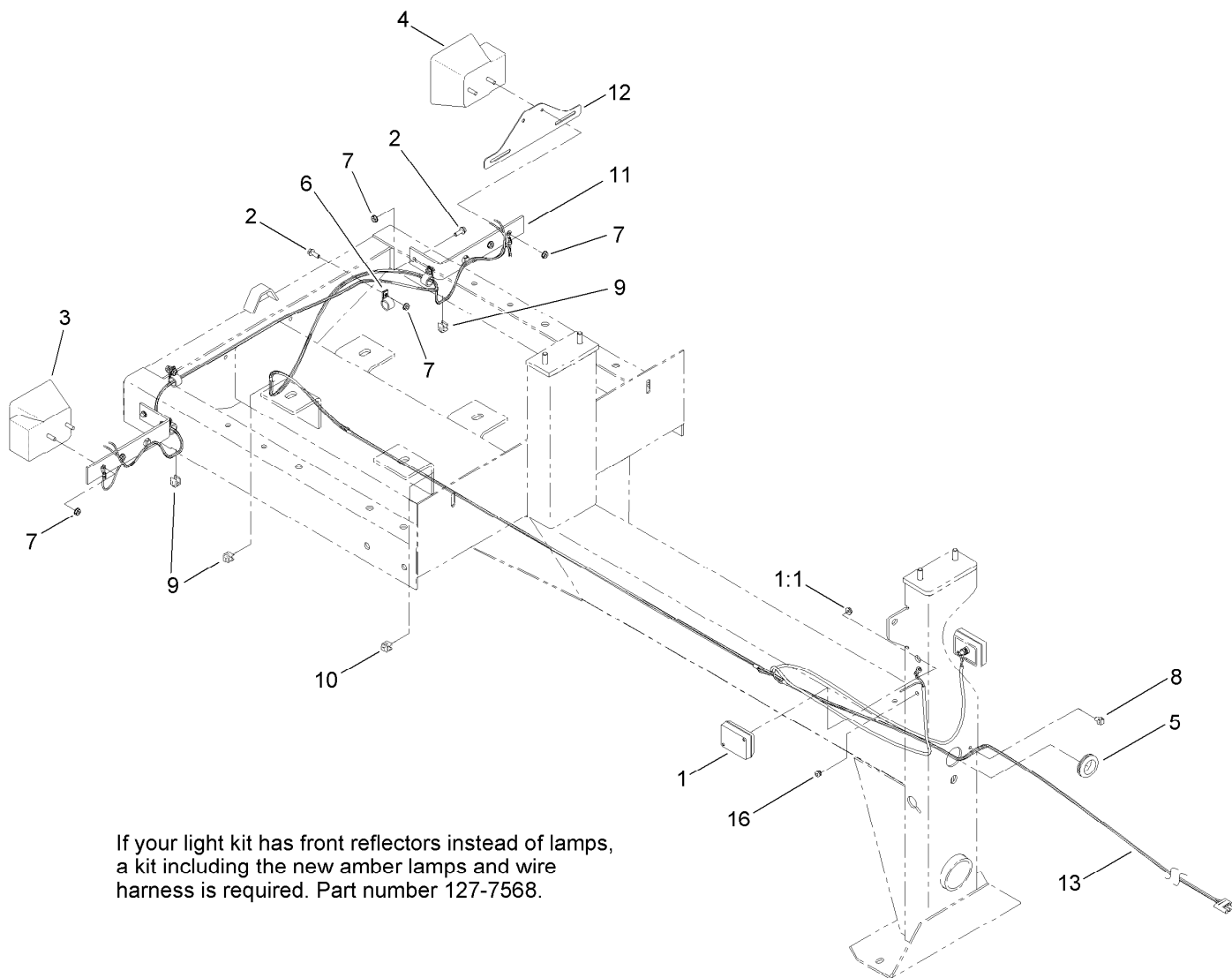
Gear Driven Mortar Mixer Tail Light and Harness Assembly . . . . . 6



## Concrete Mixer Tail Light and Harness Assembly

Ref.	Part Number	Qty.	Description
1	127-7562	2	Lamp-Marker, Front Side
1:1	32149-2	1	Nut-Keps
2	115-5103	9	Screw-HHF
3	120-3734	1	Light-Tail, RH
4	120-3735	1	Light-Tail, LH
5	120-4831	2	Grommet
6	2412-87	7	Clamp-Cable
7	32149-2	13	Nut-Keps
8	32180-030	2	Clip-Tie
9	32180-078	4	Clip-Edge
10	32180-082	1	Clip-Edge W/Tie, Perpendicular ●
11	ST36003-03	2	Bracket-Universal
12	125-8659-03	1	Plate-License Holder
13	127-7567	1	Harness-Wire
16	127-7566	2	Grommet

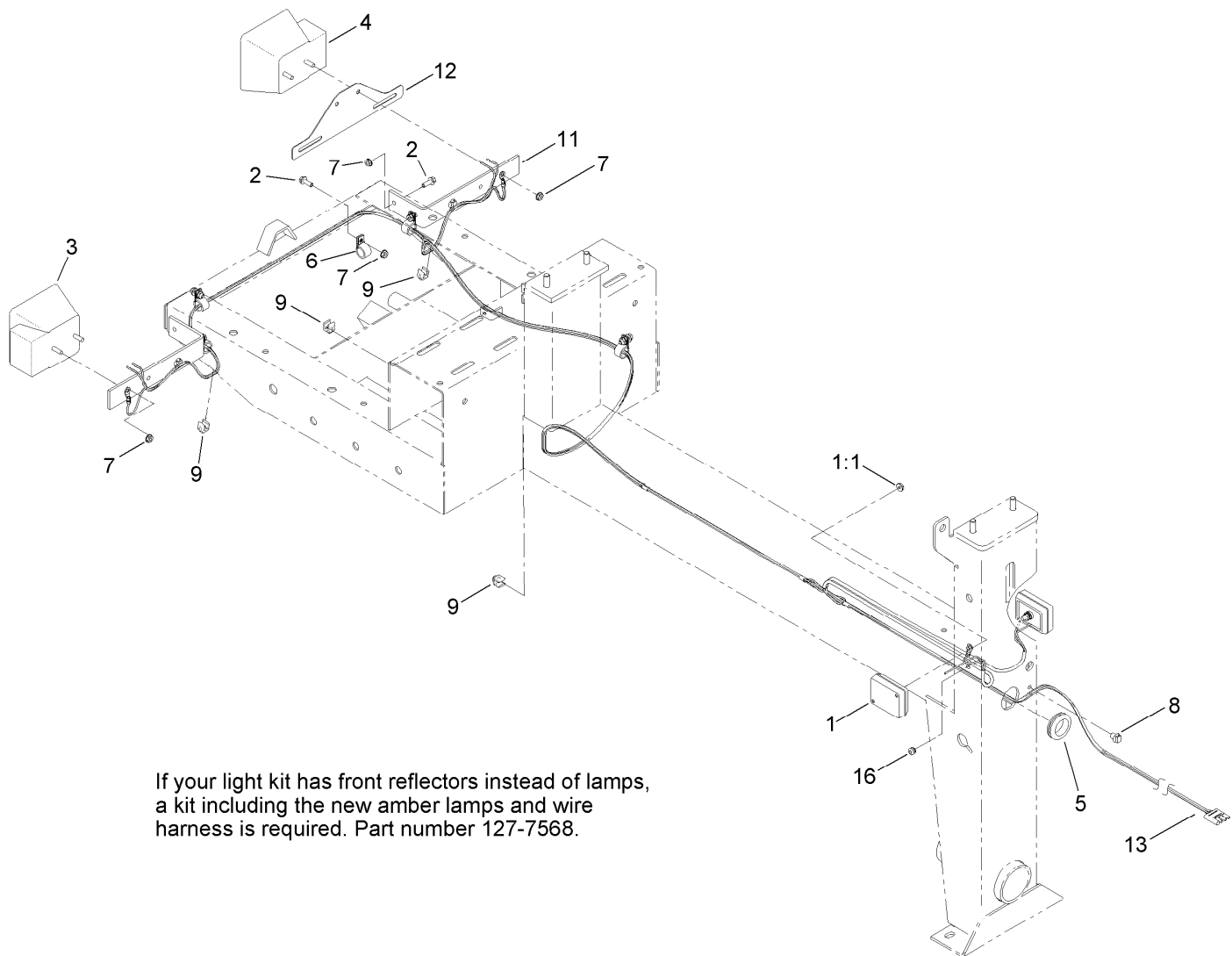
● Not used for this configuration



If your light kit has front reflectors instead of lamps, a kit including the new amber lamps and wire harness is required. Part number 127-7568.

## Mortar Mixer Tail Light and Harness Assembly

Ref.	Part Number	Qty.	Description
1	127-7562	2	Lamp-Marker, Front Side
1:1	32149-2	1	Nut-Keps
2	115-5103	9	Screw-HHF
3	120-3734	1	Light-Tail, RH
4	120-3735	1	Light-Tail, LH
5	120-4831	2	Grommet
6	2412-87	7	Clamp-Cable
7	32149-2	13	Nut-Keps
8	32180-030	2	Clip-Tie
9	32180-078	4	Clip-Edge
10	32180-082	1	Clip-Edge W/Tie, Perpendicular
11	ST36003-03	2	Bracket-Universal
12	125-8659-03	1	Plate-License Holder
13	127-7567	1	Harness-Wire
16	127-7566	2	Grommet



## Gear Driven Mortar Mixer Tail Light and Harness Assembly

Ref.	Part Number	Qty.	Description
1	127-7562	2	Lamp-Marker, Front Side
1:1	32149-2	1	Nut-Keps
2	115-5103	9	Screw-HHF
3	120-3734	1	Light-Tail, RH
4	120-3735	1	Light-Tail, LH
5	120-4831	2	Grommet
6	2412-87	7	Clamp-Cable
7	32149-2	13	Nut-Keps
8	32180-030	2	Clip-Tie
9	32180-078	4	Clip-Edge
10	32180-082	1	Clip-Edge W/Tie, Perpendicular ●
11	ST36003-03	2	Bracket-Universal
12	125-8659-03	1	Plate-License Holder
13	127-7567	1	Harness-Wire
16	127-7566	2	Grommet

● Not used for this configuration

**Notes:**



**Count on it.**