



## SNOW CAB KIT

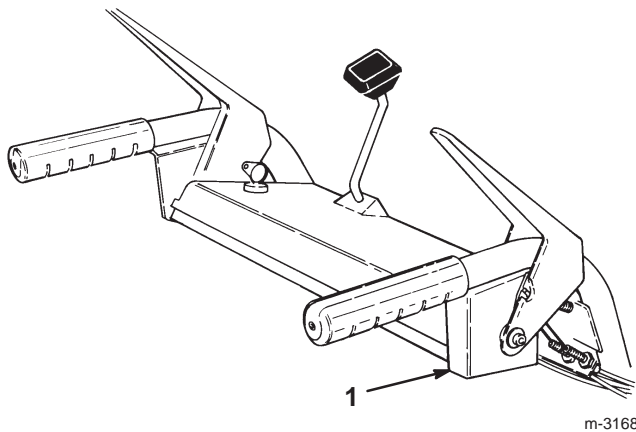
PART NO. 68-9500

### INSTALLATION INSTRUCTIONS

**IMPORTANT:** Always install Snow Cab Weight Kit (P/N 74-1190) when the Snow Cab Kit is installed. The Weight Kit is required for the 624, 824, 828 and 1028 Power Shift snowthrowers when the optional cab is installed (also recommended for 1132 and 1232 Power Shift snowthrowers). The kit helps prevent the front end of the snowthrower from riding up when wheels are in the forward position.

**Note:** Do not tighten mounting bolts until all parts of the cab have been installed.

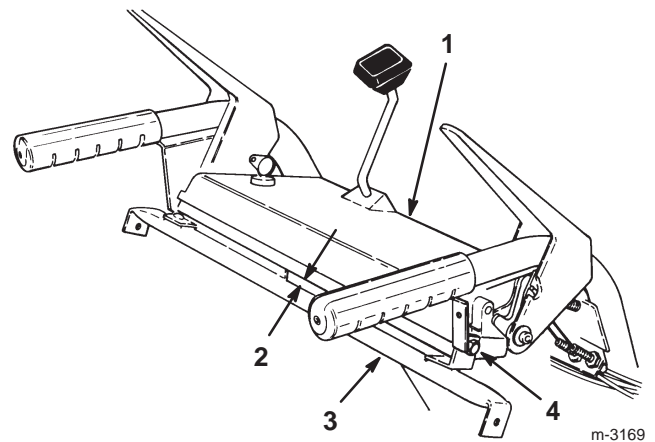
1. Remove (2) screws securing lever cover to right handle (Fig. 1).



**Figure 1**

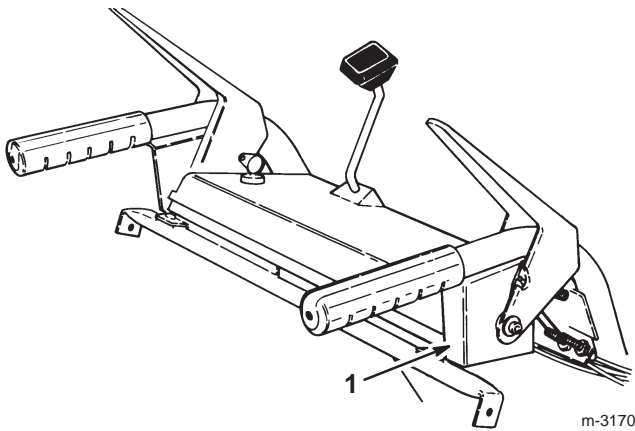
1. Lever cover

2. Remove (2) flange head capscrews securing control panel to handles (one on each side) and loosely secure attaching bracket base to handles with flange head capscrews removed (Fig. 2).



**Figure 2**

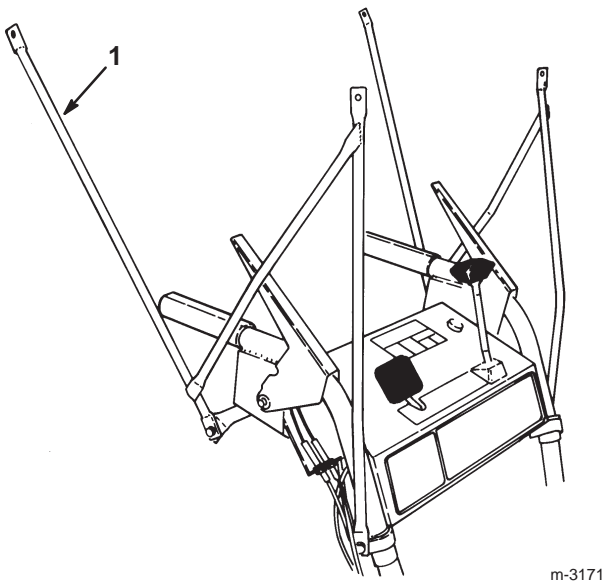
1. Control panel
  2. Approximately 1/4"
  3. Attaching bracket base
  4. Flange head capscrew
3. Pivot attaching bracket base rearward until there is approximately 1/4" space between bracket and control panel, then tighten flange head capscrews securing bracket to handles (Fig. 2).
  4. Reinstall new lever cover to right handle with (2) screws previously removed (Fig. 3).



**Figure 3**

1. Lever cover

5. Position and secure right hand attaching bracket to attaching bracket base as shown in Figure 4, using a 1/4-20 x 3/4" lg. capscrew and locknut.



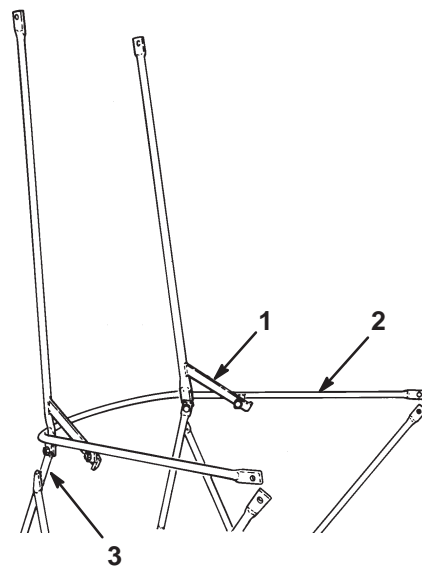
**Figure 4**

1. Attaching bracket

6. Place the 1/4" loop clamp around right handle just below control panel. Secure front leg of right hand attaching bracket to loop clamp with a

1/4-20 x 2" lg. capscrew and locknut. Control cables to be routed outside of clamp. Repeat procedure on left side of machine.

7. Mount horizontal curved bow and corner posts to front legs of attaching brackets with (2) 1/4-20 x 3/4" lg. capscrews (capscrew heads inside the cab) and locknuts (Fig. 5). Welded clips on curved bow to be positioned between the corner posts and attaching bracket with the posts on the inside.
8. Fasten the (2) braces of the corner to the clips on the curved bow with (2) 1/4-20 x 3/4" lg. capscrews (capscrew heads inside the cab) and locknuts (Fig. 5).

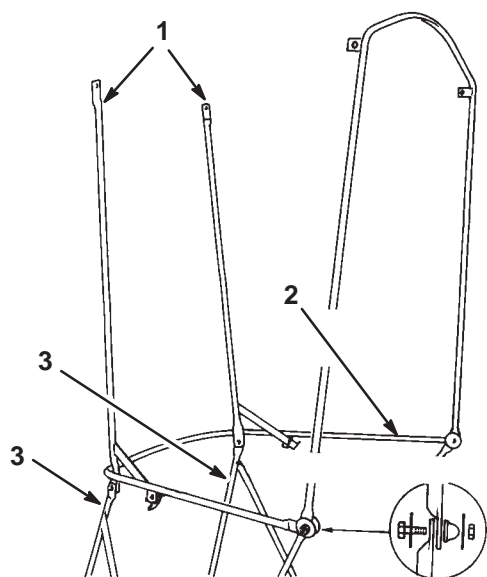


**Figure 5**

1. Welded clip  
2. Horizontal curved bow  
3. Corner post

9. Mount each side of vertical bow (Fig. 6) to attaching brackets and rear horizontal curved bow with vertical bow positioned between brackets and curved bow (Fig. 6). Secure each side with a 1/4-20 x 1" lg. capscrew (capscrew heads inside the cab), (2) 1/4" flatwashers on

each side of framework and locknut. Tighten fasteners and install red caplugs over exposed threads.

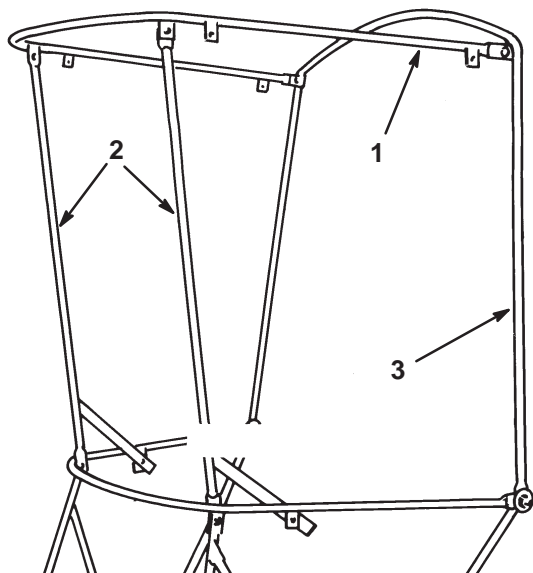


m-3173

**Figure 6**

- 1. Vertical bow
- 2. Horizontal curved bow
- 3. Corner post

10. Mount the top frame to the rear vertical bow and to the upper ends of the front posts with (4) 1/4-20 x 3/4" lg. capscrews (capscrew heads inside the cab) and locknuts (Fig. 7).



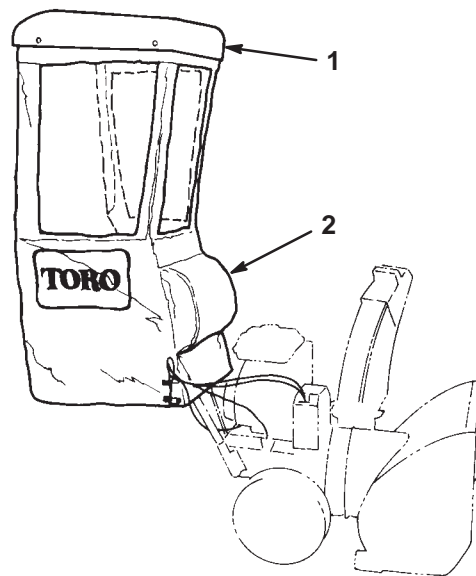
m-3174

**Figure 7**

- 1. Top frame
- 2. Front post
- 3. Rear vertical bow

11. Tighten all fasteners to secure assembly.

12. Carefully unfold and snap vinyl enclosure over the top frame (Fig. 8).



m-3175

**Figure 8**

- 1. Plastic top
- 2. Vinyl shell

13. Tie bottom of shell around control cables (Fig. 8).

14. Mount plastic top to top frame and secure with (4) 1/4-20 x 3/4" lg. capscrews, 1/4" flatwashers (capscrew heads and flatwashers outside the plastic top) and locknuts (Fig. 8).

**Note:** If headlight is to be mounted to snowthrower, cut two slots in cab directly above mounting holes in handle. Disconnect wire and run through hole in cab. Secure headlight to handle.

15. Install Snow Cab Weight Kit (P/N 74-1190).

