



Multi Pro® WM Turf Sprayer Finishing Kit

Manual Workman® Utility Vehicle

Model No. 131-3302

Installation Instructions

⚠ WARNING

CALIFORNIA Proposition 65 Warning

This product contains a chemical or chemicals known to the State of California to cause cancer, birth defects, or reproductive harm.

Use of this product may cause exposure to chemicals known to the State of California to cause cancer, birth defects, or other reproductive harm.

Installation

Loose Parts

Use the chart below to verify that all parts have been shipped.

Procedure	Description	Qty.	Use
1	Drive-shaft-shield bracket	1	Install the drive-shaft shield on the sprayer pump.
2	PTO drive shaft Woodruff key Set screw Drive-shaft shield Clip Flange-head bolt (1/4 x 3/4 inch)	1 1 2 1 2 2	Install the PTO shaft and the drive-shaft shield to the sprayer pump.
3	Hydraulic hose (5/8 x 55.6 inches) Hydraulic hose (5/8 x 85.2 inches) Male quick coupler Female quick coupler Tube clamp Clamp bolt (5/16 x 1-1/2 inches) Cable tie	1 1 1 1 2 1 3	Install the hydraulic hoses for the boom lift cylinders.
4	No parts required	—	Couple the PTO shaft to the transaxle.

Note: Remove the cargo box or flatbed from the vehicle before installing this kit; refer to the *Operator's Manual* for the vehicle.

Note: For Non-TC models, install the Rear PTO Kit before installing this kit; contact your Authorized Toro Distributor about purchasing this kit.



1

Installing the Drive-Shaft-Shield Bracket on the Sprayer Pump

Parts needed for this procedure:

1	Drive-shaft-shield bracket
---	----------------------------

Procedure

1. Remove the 2 bolts at the left and right of the input shaft of the sprayer pump (Figure 1).

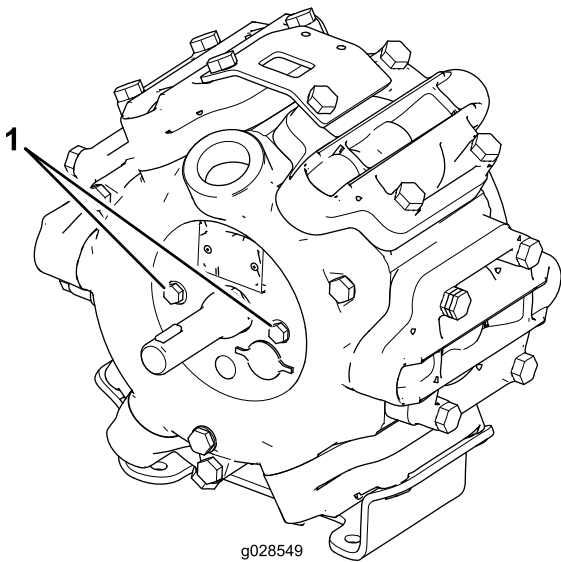


Figure 1

1. Bolts

2. Apply medium-duty thread-locking compound to the bolts.
3. Install the drive-shaft-shield bracket onto the sprayer pump with the 2 bolts removed in step 1 as shown in Figure 2.

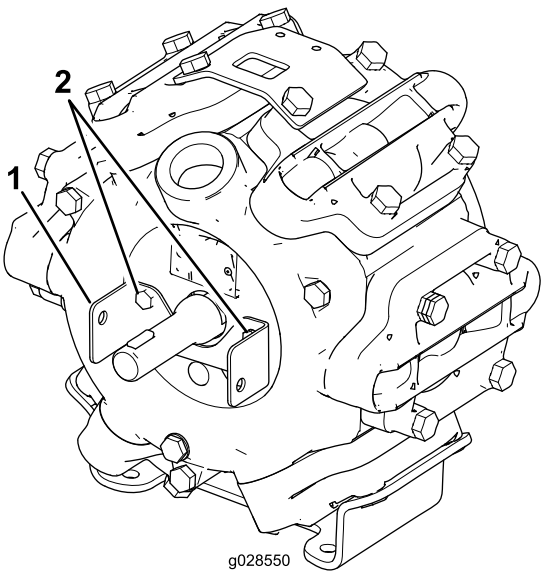


Figure 2

1. Drive-shaft-shield bracket
 2. Bolts from the sprayer pump
-
4. Torque the bolts to 23 to 26 N-m (17 to 21 ft-lb).

2

Install the PTO Shaft and the Drive-Shaft Shield to the Sprayer Pump

Parts needed for this procedure:

1	PTO drive shaft
1	Woodruff key
2	Set screw
1	Drive-shaft shield
2	Clip
2	Flange-head bolt (1/4 x 3/4 inch)

Procedure

1. Insert the Woodruff key into the key slot in the shaft of the sprayer pump.

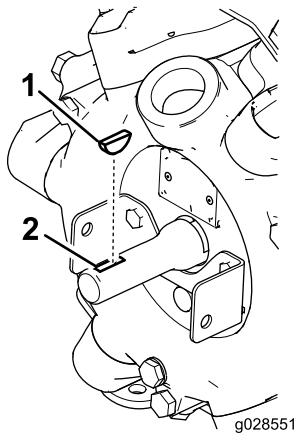


Figure 3

1. Woodruff key
2. Slot

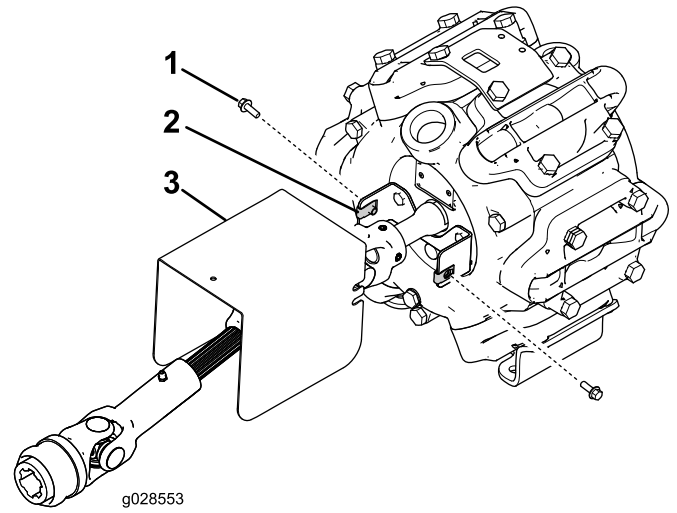


Figure 5

1. Flange-head bolt (2)
2. Clip (2)
3. Drive-shaft shield

2. Apply anti-seizing compound to the pump shaft and the Woodruff key.
3. Remove the 2 set screws on the PTO shaft end (Figure 4).

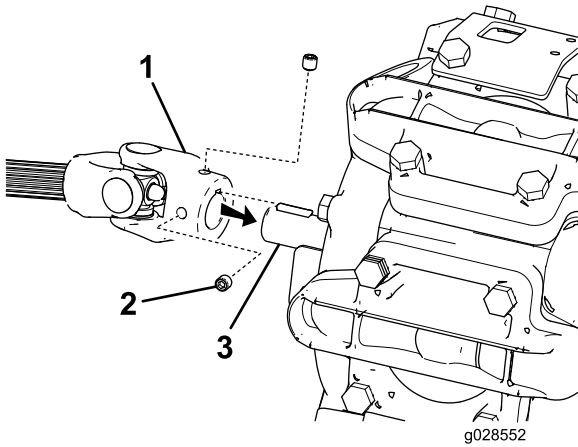


Figure 4

1. PTO shaft end
2. Set screw (2)
3. Shaft of the sprayer pump

3

Installing the Hydraulic Hoses for the Boom Lift Cylinders

Parts needed for this procedure:

1	Hydraulic hose (5/8 x 55.6 inches)
1	Hydraulic hose (5/8 x 85.2 inches)
1	Male quick coupler
1	Female quick coupler
2	Tube clamp
1	Clamp bolt (5/16 x 1-1/2 inches)
3	Cable tie

Procedure

Note: Ensure that the tank skid is raised and that the cylinder lock is in place.

Note: Ensure that the center boom section is installed; refer to the *Installation Instructions* for the sprayer.

1. Assemble the male quick-connect coupler onto the hose (3/8 x 79-1/2 inches) as shown in Figure 6 and torque the coupler to 37 to 45 N-m (27 to 33 ft-lb).

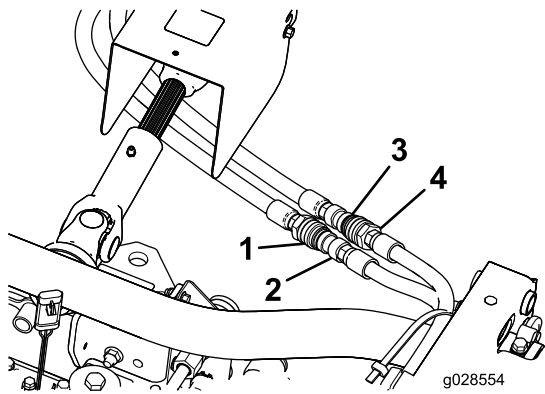


Figure 6

- | | |
|-------------------------------|---------------------------------|
| 1. Female end of hose | 3. Male end of hose |
| 2. Male quick-connect coupler | 4. Female quick-connect coupler |

- Assemble the female quick-connect coupler onto the hose (3/8 x 56-1/2 inches) as shown in [Figure 6](#) and torque the coupler to 37 to 45 N-m (27 to 33 ft-lb).
- Route the hoses and secure them with cable ties, a tube clamp, and a clamp bolt as shown in [Figure 7](#).

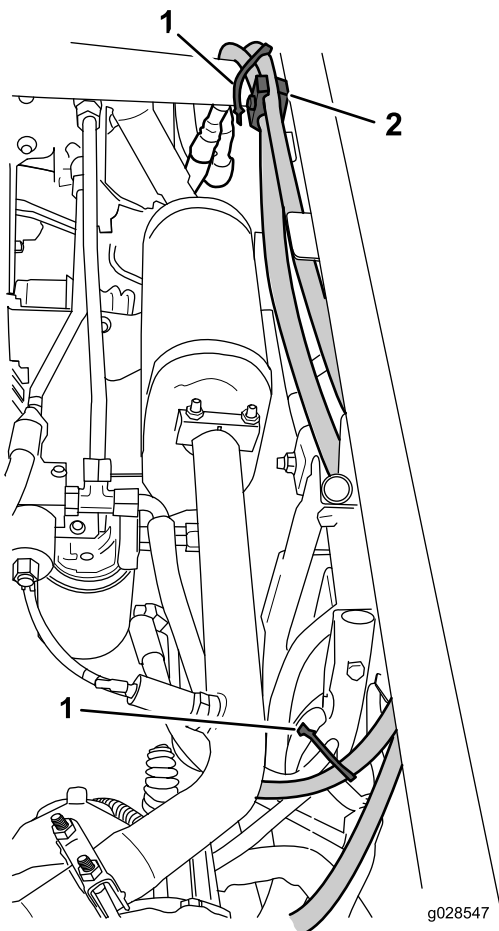


Figure 7

- | | |
|--------------|------------------------------|
| 1. Cable tie | 2. Tube clamp and clamp bolt |
|--------------|------------------------------|

- Remove the cap from the T-fitting in the hydraulic tube next to the transmission-oil filter ([Figure 8](#)).

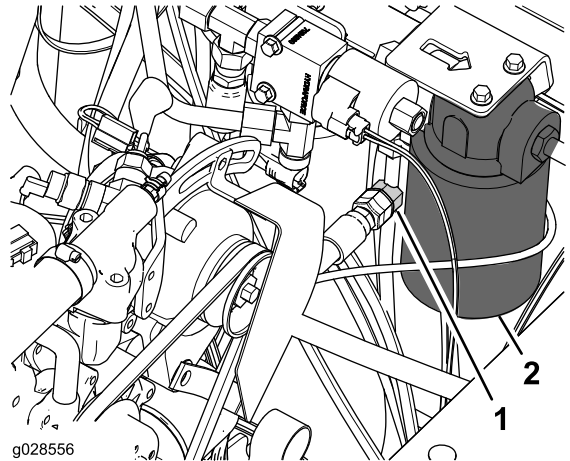


Figure 8

- | | |
|--------------|----------------------------|
| 1. T-fitting | 2. Transmission-oil filter |
|--------------|----------------------------|

- Connect the free end of the hose (3/8 x 55.6 inches) to the T-fitting ([Figure 8](#)) and torque the swivel nut of the hose to 37 to 45 N-m (27 to 33 ft-lb).
- Remove the cap from the T-fitting in the hydraulic tube next to the hydraulic fluid tank ([Figure 9](#)).

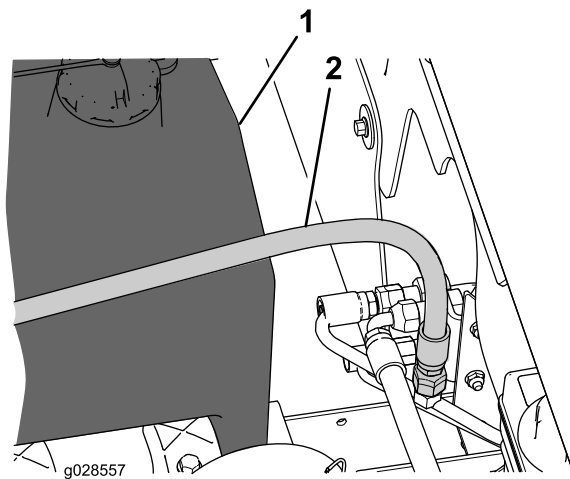


Figure 9

The crosstube is removed for the purpose of clarity.

- | | |
|--------------------------------------|-------------------------|
| 1. Hose end (connected to T-fitting) | 2. Hydraulic fluid tank |
|--------------------------------------|-------------------------|

- Connect the free end of the hose (3/8 x 85.2 inches) to the T-fitting ([Figure 8](#)) and torque the swivel nut of the hose to 37 to 45 N-m (27 to 33 ft-lb).

4

Coupling the PTO Shaft to the Transaxle

No Parts Required

Procedure

1. At the front yolk of the PTO drive shaft, align the socket of the front yolk with the splines of the PTO output shaft on the transaxle ([Figure 10](#)).

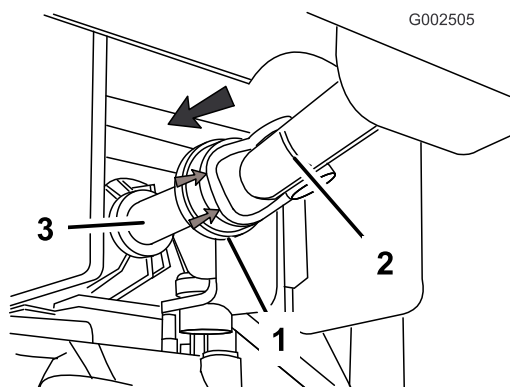


Figure 10

- | | |
|--------------------|---------------------|
| 1. Spring lock | 3. PTO output shaft |
| 2. PTO drive shaft | |
-
2. Pull the spring lock (rubber cowling) at the front yolk of PTO drive shaft rearward ([Figure 10](#)).
 3. Slide the socket of the front yolk over the output shaft splines ([Figure 10](#)).
 4. Push the spring lock of the front yolk of PTO drive shaft forward ([Figure 10](#)).
 5. Pull back the front half of the drive shaft to ensure that the locking balls of the spring lock are seated in the groove of the PTO output shaft ([Figure 10](#)).

Important: Ensure that the PTO drive shaft is secured to the PTO output shaft.

Notes:

Notes:



Count on it.