



Count on it.

Parts Catalog

72in Rotary Mower

**Groundsmaster® 360 Series and 7200 Series
Traction Unit**

Model No. 30353—Serial No. 315000001 and Up



Ordering Replacement Parts

To order replacement parts, please supply the part number, the quantity, and the description of each part desired.

Understanding Reference Numbers

Each identified part in an illustration has a reference number. The reference number for a part also appears in the parts list, along with other information about the part.

This catalog uses two special reference number formats, one to indicate parts in a service assembly and another to indicate the quantity of a given part in an illustration.

Service Assembly Reference Numbers

Parts in service assemblies have reference numbers in the form a:b. The a represents the reference number of the entire service assembly and the b represents a sequential number unique to each part within the service assembly.

For example, a wheel assembly might be identified by reference number 6, the tire by 6:1, the valve by 6:2, and the wheel by 6:3. When you order the assembly identified by reference number 6, you receive all parts identified by reference numbers 6:1, 6:2, and 6:3. However, you may also order any part individually. Reference numbers of this type appear in illustration and in parts lists.

Reference Numbers Indicating Quantity

In an illustration, if a reference number indicates more than one part, the reference number has the form nX y. The n represents the quantity of the part, the X is the multiplication symbol, and the y represents the reference number.

For example, in an illustration, the reference number 2X 37 means that two of the parts identified by reference number 37 are indicated.

List of Abbreviations

AR: as required

ASM: assembly

BBC: blade brake control

BHTF: button head thread forming

CARR: carriage

CCW: counter clockwise

CW: clockwise

DEG: degrees

DPA: Dual Point Adjustment

ECM: electronic control module

EXT: external

FH: flat head

GA: gauge

HD: heavy-duty

HF: hex flange

HH: hex head

HHF: hex head flange

HHFTF: hex head flange thread forming

HJ: hex jam

HLH: hex lag head

HOC: height-of-cut

HP: high pressure

HSBH: hex socket button head

HSFH: hex socket flat head

HSH: hex socket head

HWH: hex washer head

HWHTF: hex washer head thread forming

HYD: hydraulic

LH: left hand

LP: low pressure

LPG: Liquefied Petroleum Gas

NI: nylon insert

NPTF: national pipe thread fine

PFH: phillips flat head

PPH: phillips pan head

PPHTF: phillips pan head thread forming

PRH: phillips round head

PTH: phillips truss head

PTO: power-take-off

RH: right hand

ROPS: roll-over protection system

RRB: rear roller brush

SFH: slotted fillister head

SHH: slotted hex head

SHWH: slotted hex washer head

SPH: slotted pan head

SQH: square head

SRH: slotted round head

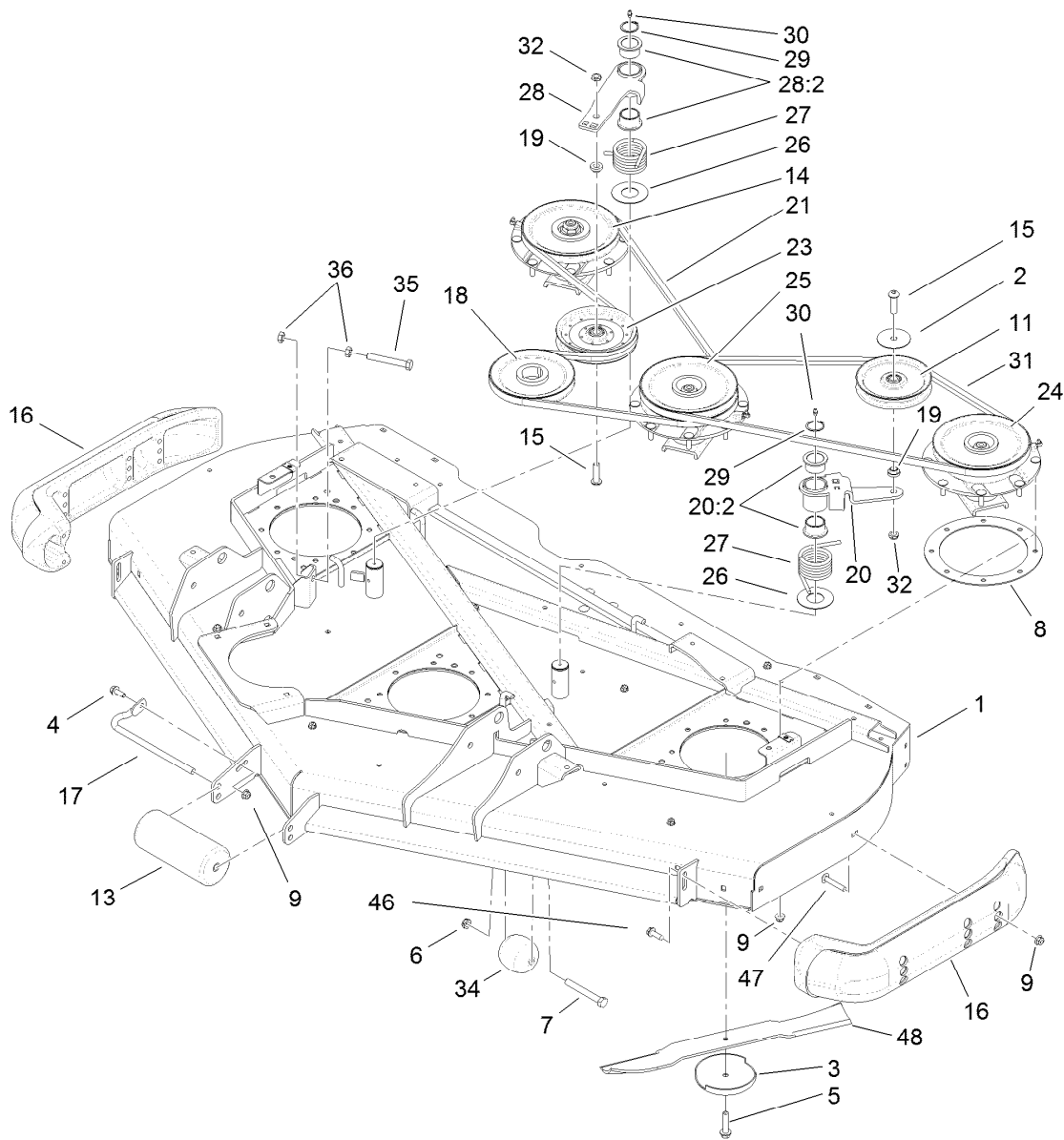
STD: standard

TAP: self tapping

TTH: torx truss head

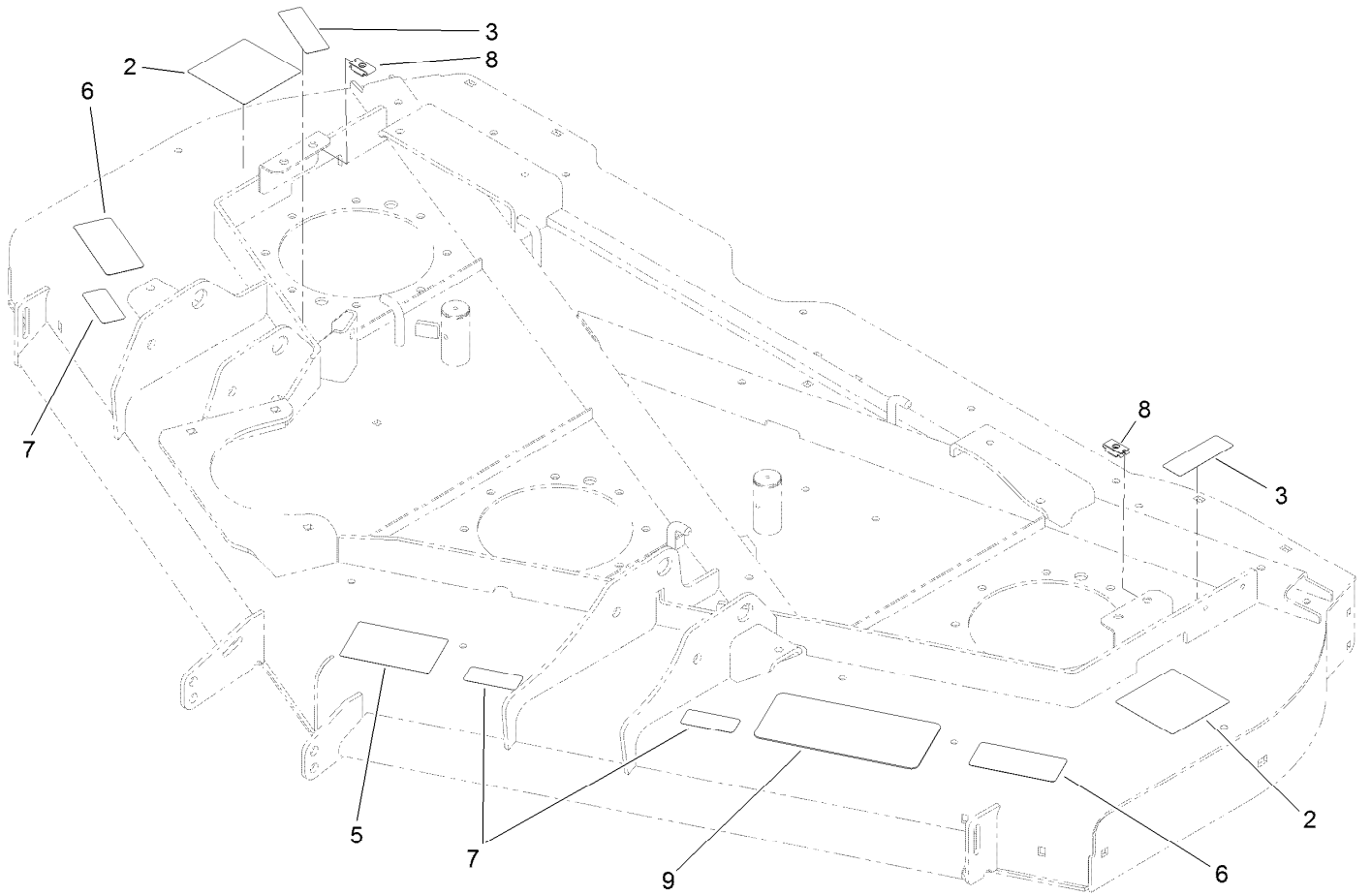
Contents

Roller, Belt and Pulley Assembly	4
Deck Decal Assembly No. 127-6487	5
Low Driven Spindle Assembly No. 119-4776	6
High Driven Spindle Assembly No. 119-4549	7
Double Driven Spindle Assembly No. 119-4548	8
Cover and Gearbox Assembly	9
Gearbox Assembly No. 130-8659	10
Adjustment Link and Bumper Assembly	11



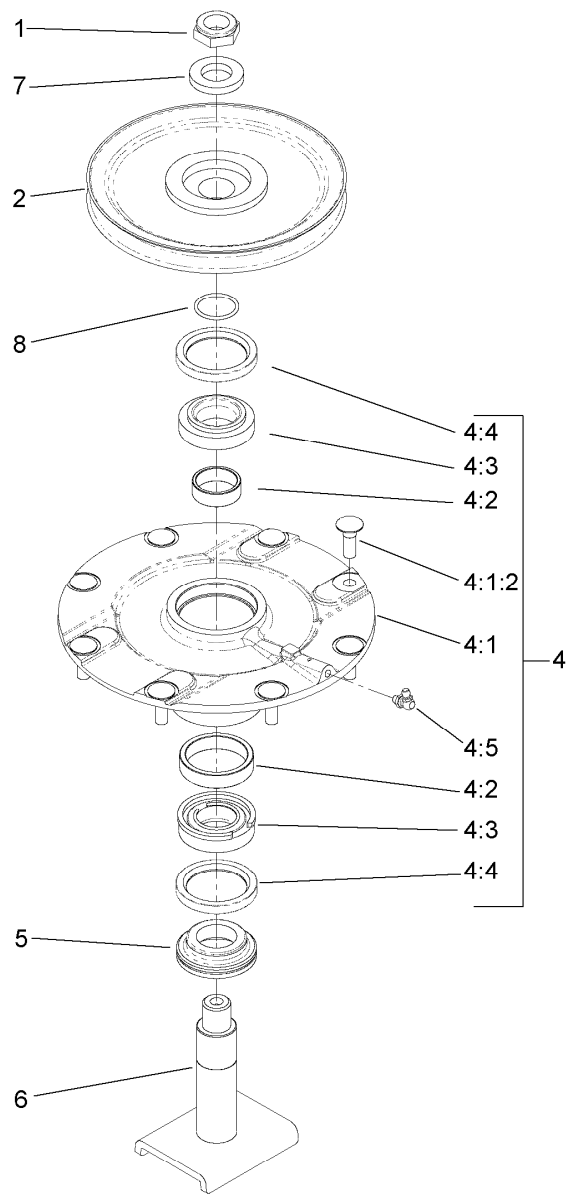
Roller, Belt and Pulley Assembly

Ref.	Part Number	Qty.	Description	Ref.	Part Number	Qty.	Description
1	127-6487	1	Deck ASM	21	110-9592	1	Belt-V
2	100-3102	1	Washer-Flat	23	110-9596	1	Pulley-Idler
3	72-9361	3	Cup-Scalp, Anti	24	119-4549	1	High-Driven Spindle ASM
4	3234-42	1	Screw-HHF	25	119-4548	1	Double Driven Spindle ASM
5	92-5816	3	Bolt-Blade	26	108-1926	2	Washer
6	3296-45	2	Nut-Lock, NI	27	108-1921	2	Spring-Torsion
7	325-17	2	Screw-HH	28	108-1930	1	Idler Arm ASM
8	120-6603-03	3	Ring-Doubler	28:2	93-4510	2	Bushing-Caster
9	104-8301	29	Nut-Flange, NI	29	32120-84	2	Ring-Snap, External
11	01-268-0160	1	Pulley-Idler	30	302-5	2	Fitting-Grease
13	68-6710	1	Roller	31	110-9593	1	Belt - V
14	119-4776	1	Low-Driven Spindle ASM	32	3296-45	2	Nut-Lock, NI
15	108-1993	2	Screw-HSBH	34	29-4820	2	Roller
16	112-1479	2	Skid-Bumper, Deck	35	325-14	1	Screw-HH
17	68-6840	1	Shaft-Roller	36	3218-5	2	Nut-Jam
18	107-4725	1	Pulley	46	9136144	2	Screw-HWHTF
19	108-1924	2	Spacer-Idler	47	3231-33	4	Screw-CARR
20	117-9176	1	Idler Arm ASM	48	108-1958-03	3	Blade-Rotary
20:2	93-4510	2	Bushing-Caster	48	112-9586-03	3	Blade-Flat



Deck Decal Assembly No. 127-6487

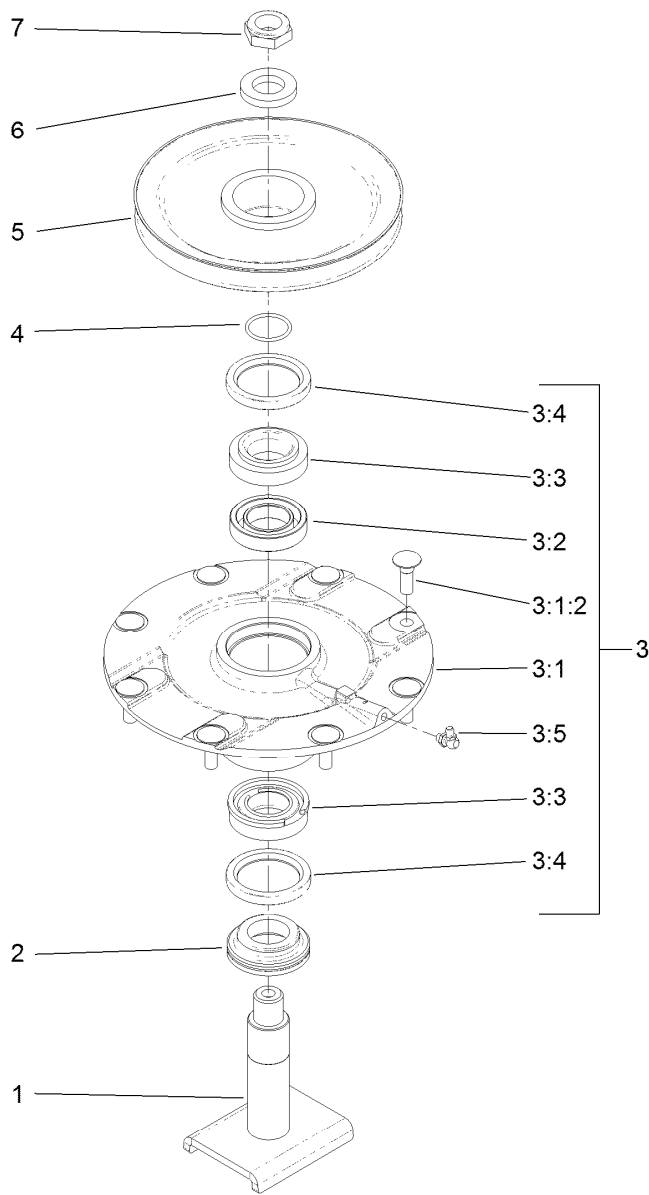
<i>Ref.</i>	<i>Part Number</i>	<i>Qty.</i>	<i>Description</i>
2	120-6604	2	Decal-Danger
3	117-4979	2	Decal-Warning, Shields
5	57-0280	1	Decal
6	93-7818	2	Decal-Torque, Blade Bolt
7	93-6696	3	Decal-Warning
8	110-3510	2	Nut-Retainer
9	110-0988	1	Tread-Floor, Side



Low Driven Spindle Assembly No. 119-4776

Ref.	Part Number	Qty.	Description
1	3296-60	1	Nut-Lock, NI
2	104-3546	1	Pulley-Driven, Low
4	119-4775	1	Spindle Housing ASM
4:1		1	Spindle ASM ●
4:1:2	114-8195	8	Bolt-Ribbed Neck
4:2	120-5577	1	Bearing Spacer Set
4:3	110-8297	1	Bearing ASM
4:4	253-154	2	Seal-Oil
4:5	302-60	1	Fitting-Grease
5	69-6950	1	Spacer-Shaft, Spindle
6	104-3554	1	Shaft-Spindle
7	120-5576	1	Washer-Hardened
8	106-7159	1	O-Ring

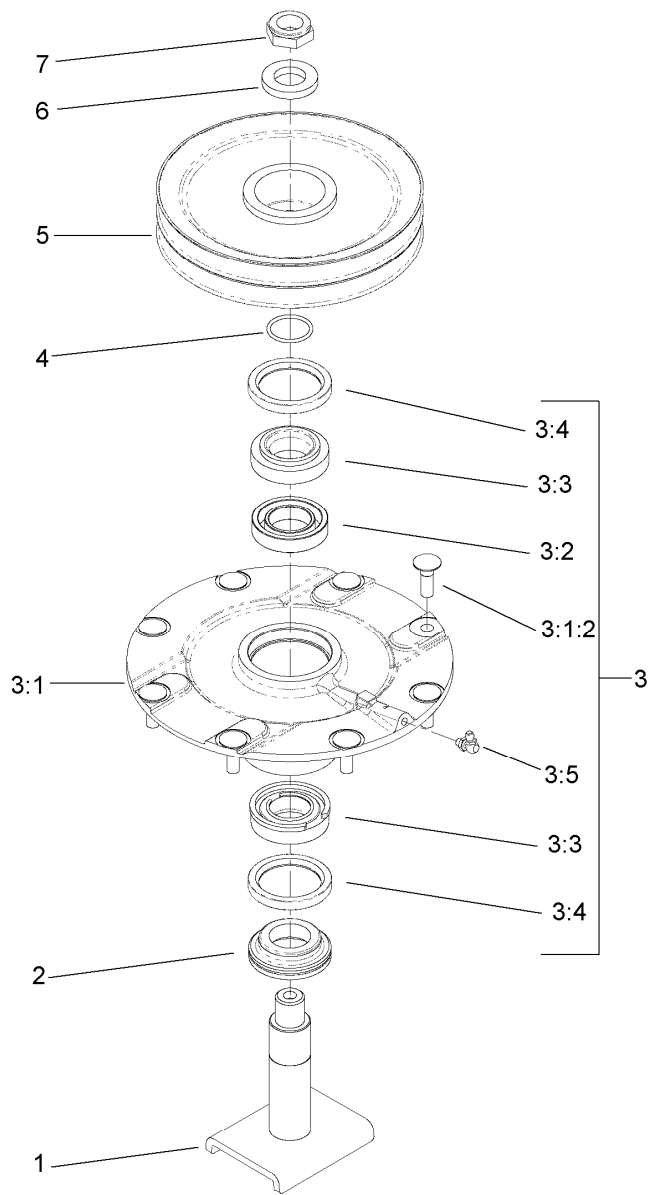
● Not serviced separately



High Driven Spindle Assembly No. 119-4549

Ref.	Part Number	Qty.	Description
1	104-3554	1	Shaft-Spindle
2	69-6950	1	Spacer-Shaft, Spindle
3	119-4775	1	Spindle Housing ASM
3:1		1	Spindle ASM ●
3:1:2	114-8195	8	Bolt-Ribbed Neck
3:2	120-5577	1	Bearing Spacer Set
3:3	110-8297	1	Bearing ASM
3:4	253-154	2	Seal-Oil
3:5	302-60	1	Fitting-Grease
4	106-7159	1	O-Ring
5	104-3548	1	Pulley-Driven, High
6	120-5576	1	Washer-Hardened
7	3296-60	1	Nut-Lock, NI

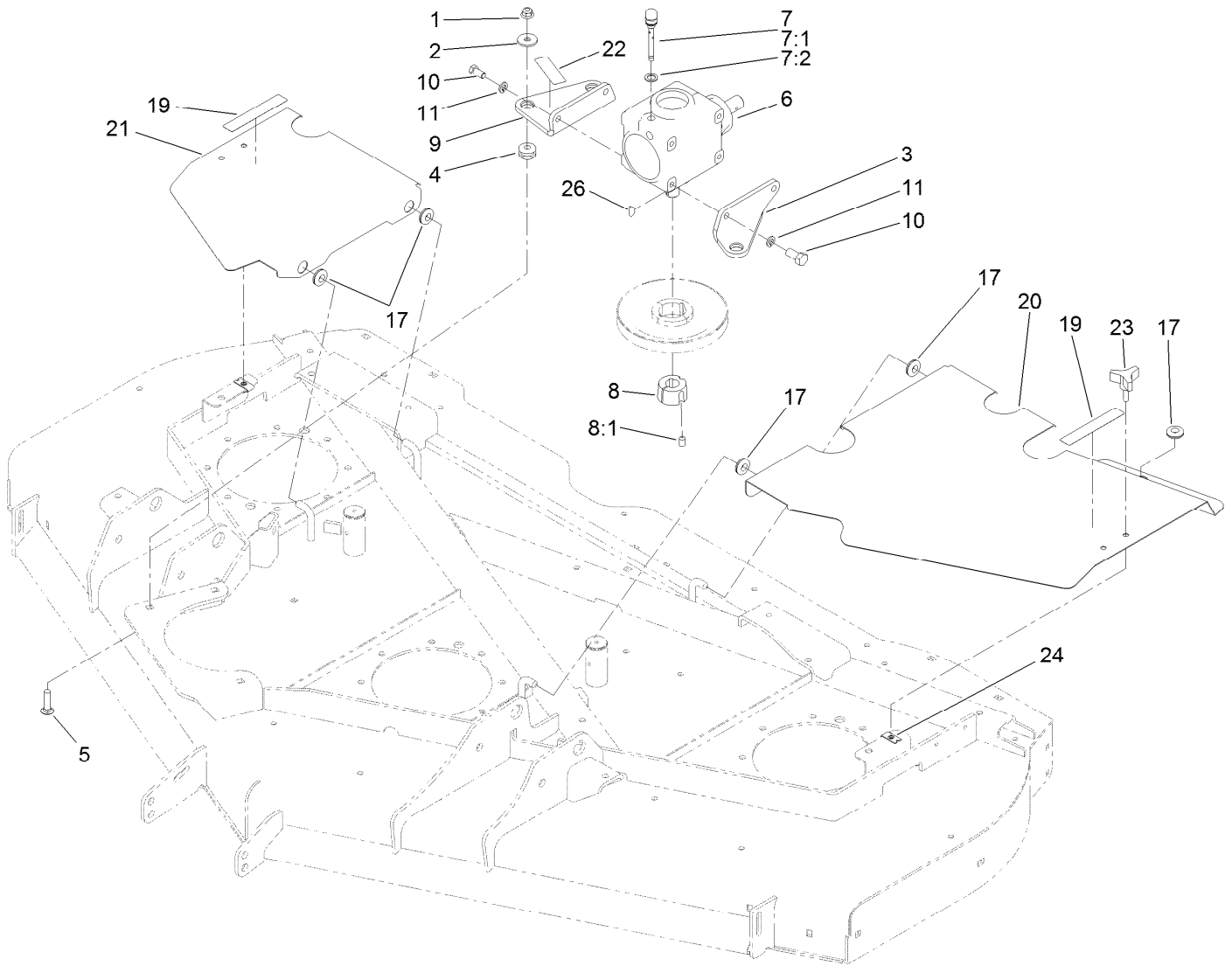
● Not serviced separately



Double Driven Spindle Assembly No. 119-4548

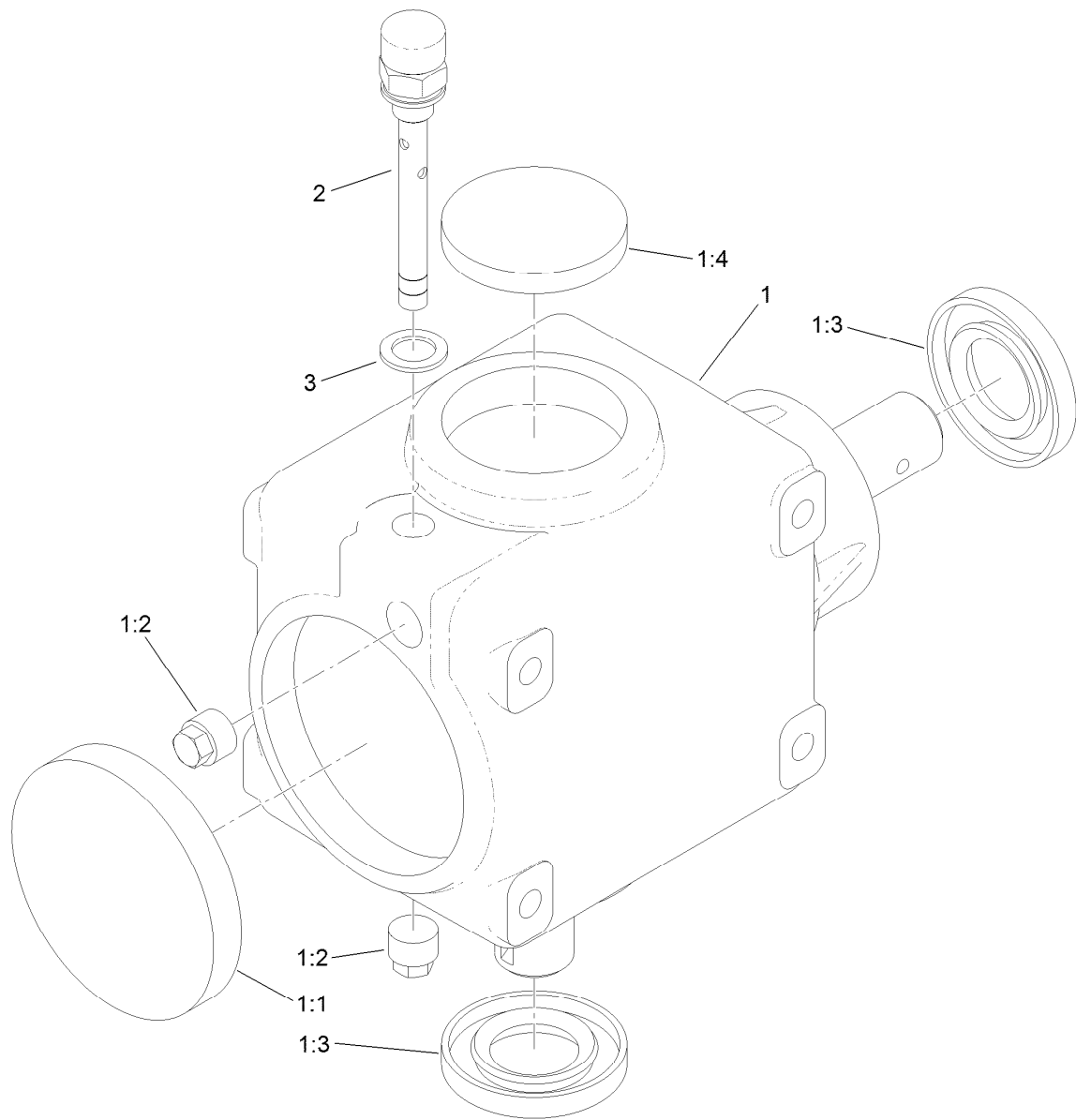
Ref.	Part Number	Qty.	Description
1	104-3554	1	Shaft-Spindle
2	69-6950	1	Spacer-Shaft, Spindle
3	119-4775	1	Spindle Housing ASM
3:1		1	Spindle ASM ●
3:1:2	114-8195	8	Bolt-Ribbed Neck
3:2	120-5577	1	Bearing Spacer Set
3:3	110-8297	1	Bearing ASM
3:4	253-154	2	Seal-Oil
3:5	302-60	1	Fitting-Grease
4	106-7159	1	O-Ring
5	104-3547	1	Pulley-Driven, Double
6	120-5576	1	Washer-Hardened
7	3296-60	1	Nut-Lock, NI

● Not serviced separately



Cover and Gearbox Assembly

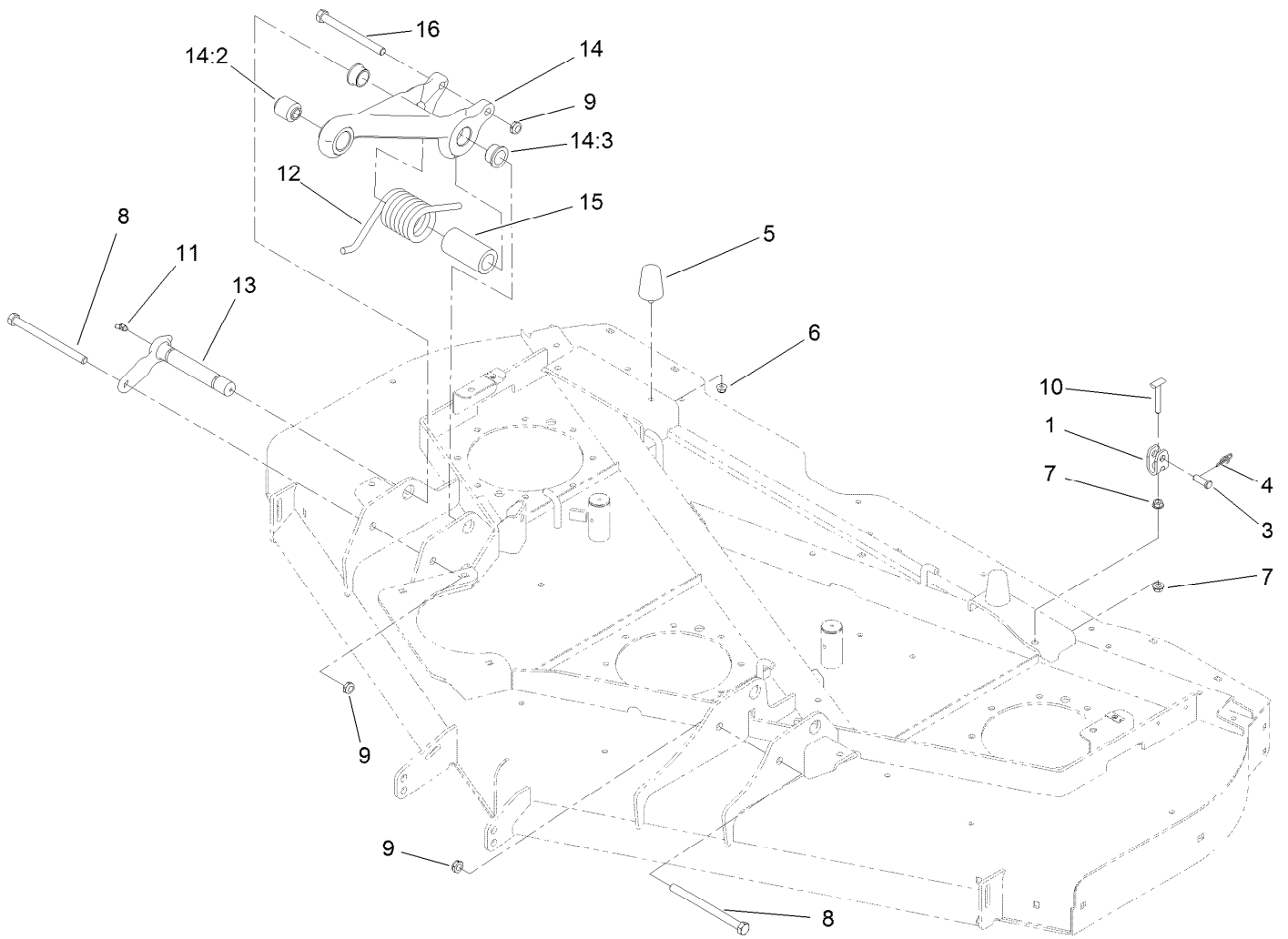
<i>Ref.</i>	<i>Part Number</i>	<i>Qty.</i>	<i>Description</i>	<i>Ref.</i>	<i>Part Number</i>	<i>Qty.</i>	<i>Description</i>
1	104-8301	3	Nut-Flange, NI	9	110-6385-03	1	Bracket-Gearbox, RH
2	63-8410	3	Washer	10	323-4	4	Screw-HH
3	110-6384-03	1	Bracket-Gearbox, LH	11	3253-21	4	Washer-Lock
4	63-9750	3	Mount	17	112-9559	5	Grommet
5	3231-26	3	Screw-CARR	19	93-6687	2	Decal-No Step
6	130-8659	1	Gearbox ASM	20	112-1450-03	1	Cover-Deck, LH
7	131-6076	1	Breather Plug ASM	21	112-1451-03	1	Cover-Deck, RH
7:1	130-8661	1	Plug-Breather	22	93-6697	1	Decal-Lube
7:2	130-4899	1	Washer	23	106-2240	2	Knob
8	23-1640	1	Bushing-Taperlock	24	110-3510	2	Nut-Retainer
8:1	3247-4	2	Screw-Set	26	3257-5	1	Key-Woodruff



Gearbox Assembly No. 130-8659

<i>Ref.</i>	<i>Part Number</i>	<i>Qty.</i>	<i>Description</i>
1		1	Gearbox ASM ●
1:1	107-2932	1	Cap-Oil
1:2	107-2933	2	Plug
1:3	117-9247	2	Seal
1:4	107-2935	1	Cap-Oil
2	130-8661	1	Plug-Breather
3	130-4899	1	Washer

● Not serviced separately



Adjustment Link and Bumper Assembly

<i>Ref.</i>	<i>Part Number</i>	<i>Qty.</i>	<i>Description</i>	<i>Ref.</i>	<i>Part Number</i>	<i>Qty.</i>	<i>Description</i>
1	115-1429	4	Yoke-Clevis	11	302-11	4	Fitting-Lube, 45 DEG
3	700601	4	Pin-Clevis	12	110-9828	2	Spring-Torsion
4	112-1491	4	Pin-Cotter	13	120-5570	2	Pin-Retainer
5	110-5070	2	Bumper	14	112-1625	2	Pull Link ASM
6	104-8300	2	Nut-Flange, NI	14:2	107-2328	1	Bushing
7	3290-357	8	Nut-HHF, Whiz	14:3	114-5680	2	Bushing-Flange
8	325-33	2	Screw-HH	15	110-9845	2	Spacer-Plain
9	3296-45	4	Nut-Lock, NI	16	325-22	2	Screw-HH
10	125-9450	4	T-Bar				



Count on it.