



**Count on it.**

**Parts Catalog**

**21in Heavy-Duty Recycler®/Rear  
Bagger Lawn Mower**

Model No. 22290—Serial No. 315000001 and Up



# Ordering Replacement Parts

To order replacement parts, please supply the part number, the quantity, and the description of each part desired.

## Understanding Reference Numbers

Each identified part in an illustration has a reference number. The reference number for a part also appears in the parts list, along with other information about the part.

This catalog uses two special reference number formats, one to indicate parts in a service assembly and another to indicate the quantity of a given part in an illustration.

## Service Assembly Reference Numbers

Parts in service assemblies have reference numbers in the form a:b. The a represents the reference number of the entire service assembly and the b represents a sequential number unique to each part within the service assembly.

For example, a wheel assembly might be identified by reference number 6, the tire by 6:1, the valve by 6:2, and the wheel by 6:3. When you order the assembly identified by reference number 6, you receive all parts identified by reference numbers 6:1, 6:2, and 6:3. However, you may also order any part individually. Reference numbers of this type appear in illustration and in parts lists.

## Reference Numbers Indicating Quantity

In an illustration, if a reference number indicates more than one part, the reference number has the form nX y. The n represents the quantity of the part, the X is the multiplication symbol, and the y represents the reference number.

For example, in an illustration, the reference number 2X 37 means that two of the parts identified by reference number 37 are indicated.

# List of Abbreviations

**AR:** as required

**ASM:** assembly

**BBC:** blade brake control

**BHTF:** button head thread forming

**CARR:** carriage

**CCW:** counter clockwise

**CW:** clockwise

**DEG:** degrees

**DPA:** Dual Point Adjustment

**ECM:** electronic control module

**EXT:** external

**FH:** flat head

**GA:** gauge

**HD:** heavy-duty

**HF:** hex flange

**HH:** hex head

**HHF:** hex head flange

**HHFTF:** hex head flange thread forming

**HJ:** hex jam

**HLH:** hex lag head

**HOC:** height-of-cut

**HP:** high pressure

**HSBH:** hex socket button head

**HSFH:** hex socket flat head

**HSH:** hex socket head

**HWH:** hex washer head

**HWHTF:** hex washer head thread forming

**HYD:** hydraulic

**LH:** left hand

**LP:** low pressure

**LPG:** Liquefied Petroleum Gas

**NI:** nylon insert

**NPTF:** national pipe thread fine

**PFH:** phillips flat head

**PPH:** phillips pan head

**PPHTF:** phillips pan head thread forming

**PRH:** phillips round head

**PTH:** phillips truss head

**PTO:** power-take-off

**RH:** right hand

**ROPS:** roll-over protection system

**RRB:** rear roller brush

**SFH:** slotted fillister head

**SHH:** slotted hex head

**SHWH:** slotted hex washer head

**SPH:** slotted pan head

**SQH:** square head

**SRH:** slotted round head

**STD:** standard

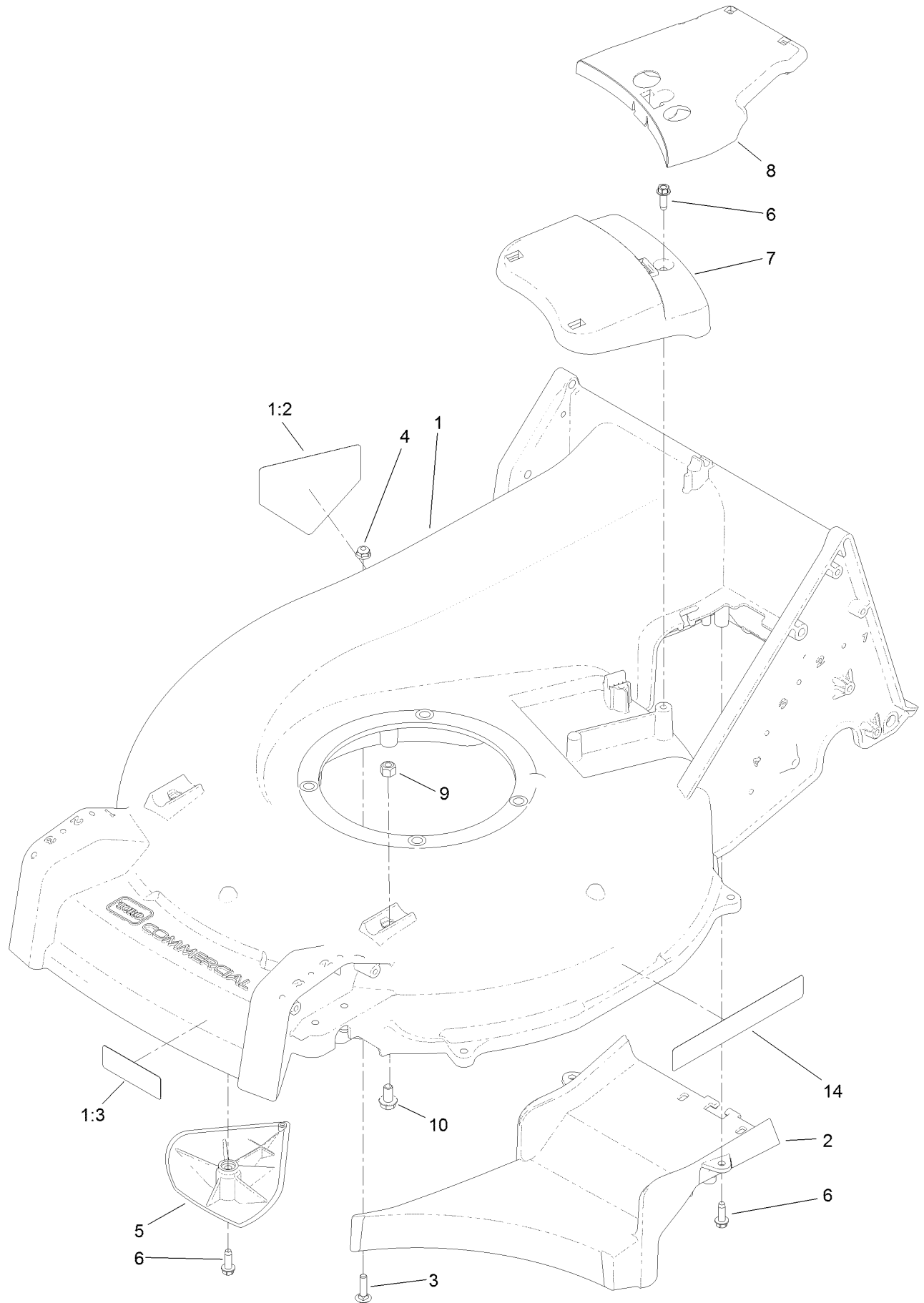
**TAP:** self tapping

**TTH:** torx truss head

# Contents

|  |    |
|--|----|
| Housing Assembly .....                 | 4  |
| Grass Bag Assembly .....               | 6  |
| Engine and Blade Assembly .....        | 8  |
| Height-of-Cut and Wheel Assembly ..... | 10 |
| Transmission Assembly .....            | 12 |
| Handle and Control Assembly .....      | 14 |
| Attachments and Accessories .....      | 16 |

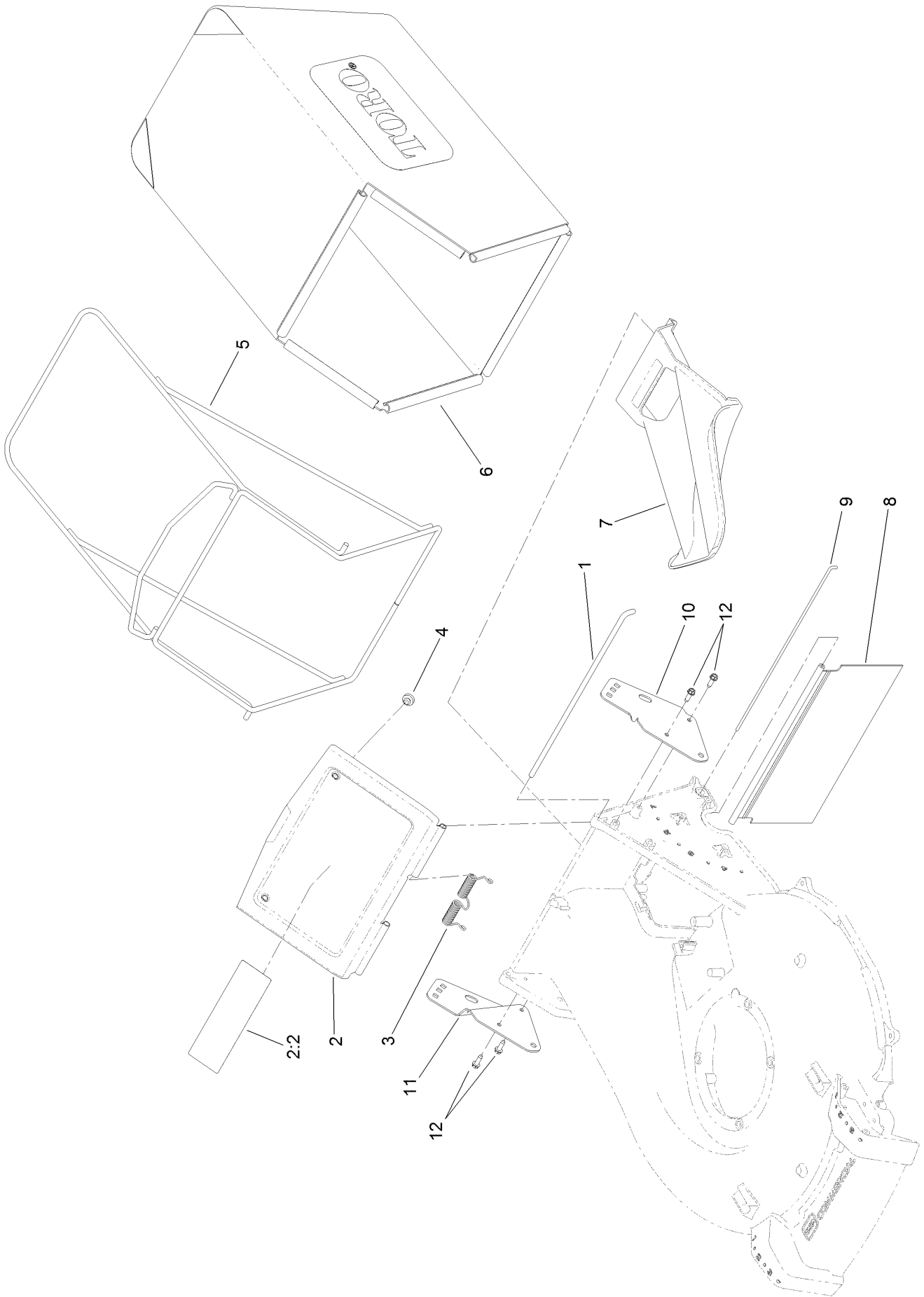
# Housing Assembly



## Housing Assembly (continued)

| <i>Ref.</i> | <i>Part Number</i> | <i>Qty.</i> | <i>Description</i>   | <i>Ref.</i> | <i>Part Number</i> | <i>Qty.</i> | <i>Description</i> |
|-------------|--------------------|-------------|----------------------|-------------|--------------------|-------------|--------------------|
| 1           | 125-8400           | 1           | Housing ASM          | 6           | 49-2040            | 5           | Screw-HWHTF        |
| 1:2         | 94-8072            | 1           | Decal-Danger         | 7           | 125-5038           | 1           | Cover-Belt, Front  |
| 1:3         | 130-9670           | 1           | Decal-Warning, Blade | 8           | 125-8380           | 1           | Cover-Belt, Rear   |
| 2           | 125-1002-01        | 1           | Floor-Chute          | 9           | 3296-29            | 2           | Nut-Lock, NI       |
| 3           | 3229-2             | 1           | Screw-CARR           | 10          | 3234-7             | 2           | Screw-HHF          |
| 4           | 104-7201           | 1           | Nut-HF               | 14          | 119-2368           | 2           | Decal-Recycler     |
| 5           | 125-5041           | 2           | Kicker               |             |                    |             |                    |

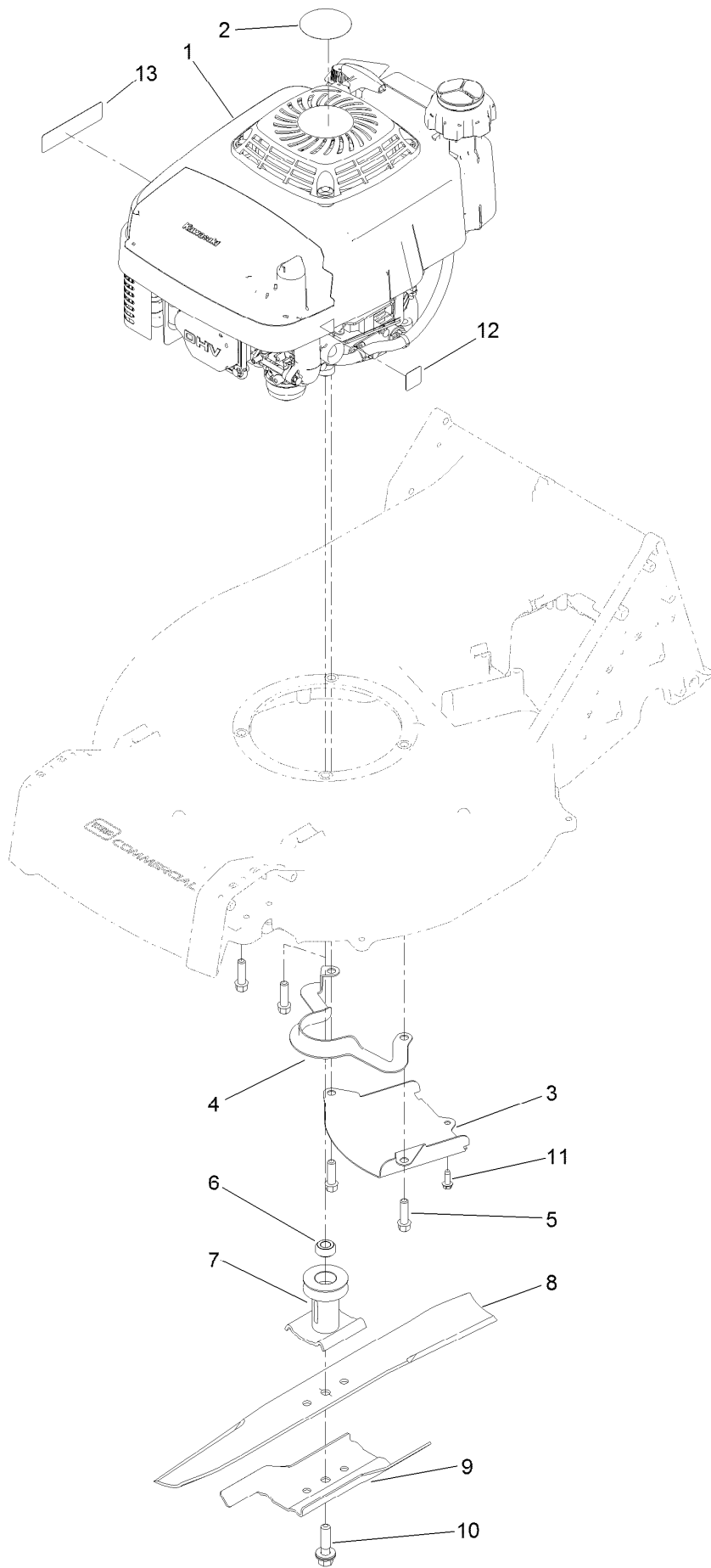
# Grass Bag Assembly



## Grass Bag Assembly (continued)

| <i>Ref.</i> | <i>Part Number</i> | <i>Qty.</i> | <i>Description</i> | <i>Ref.</i> | <i>Part Number</i> | <i>Qty.</i> | <i>Description</i>       |
|-------------|--------------------|-------------|--------------------|-------------|--------------------|-------------|--------------------------|
| 1           | 125-1017           | 1           | Rod-Door, Bag      | 7           | 125-1008           | 1           | Plug-Mulch               |
| 2           | 125-8402           | 1           | Bag Door ASM       | 8           | 125-1007           | 1           | Shield-Trailing          |
| 2:2         | 116-7583           | 1           | Decal-Warning      | 9           | 125-8413           | 1           | Rod-Shield, Trailing     |
| 3           | 125-1019           | 1           | Spring-Torsion     | 10          | 125-1013-03        | 1           | Bracket-Mount, LH Handle |
| 4           | 1-513658           | 2           | Bumper             | 11          | 125-1014-03        | 1           | Bracket-Mount, RH Handle |
| 5           | 121-1399-03        | 1           | Frame-Bag          | 12          | 49-2040            | 4           | Screw-HWHTF              |
| 6           | 125-1030           | 1           | Bag-Grass          |             |                    |             |                          |

# Engine and Blade Assembly



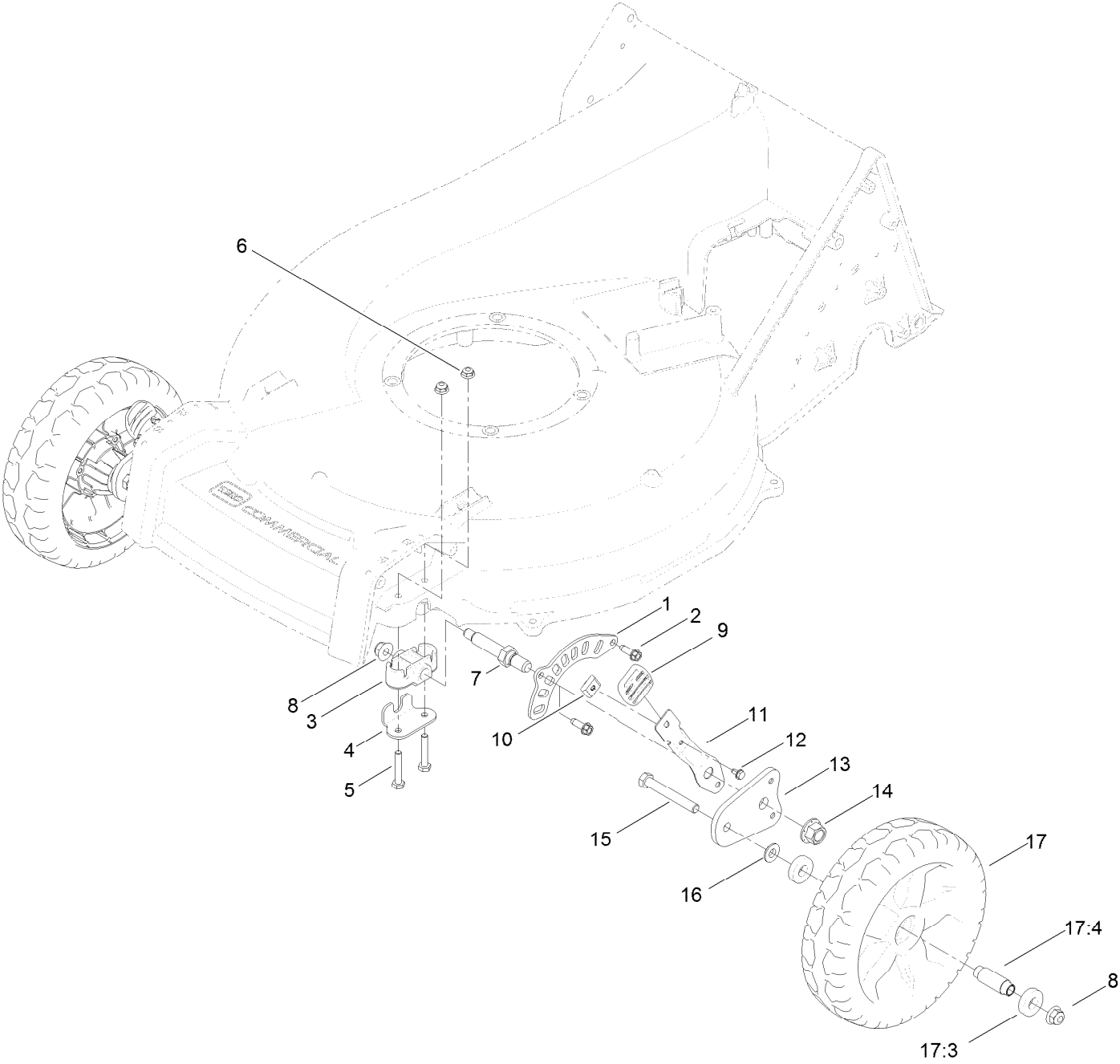


## Engine and Blade Assembly (continued)

| <i>Ref.</i> | <i>Part Number</i> | <i>Qty.</i> | <i>Description</i>        | <i>Ref.</i> | <i>Part Number</i> | <i>Qty.</i> | <i>Description</i>    |
|-------------|--------------------|-------------|---------------------------|-------------|--------------------|-------------|-----------------------|
| 1           | 121-1407           | 1           | Engine-Kawasaki, Fj180V ● | 8           | 108-3762-03        | 1           | Blade-Recycling       |
| 2           | 110-0520           | 1           | Decal                     | 9           | 125-1069-03        | 1           | Accelerator-Blade     |
| 3           | 125-1005-03        | 1           | Shield-Grass              | 10          | 125-2466           | 1           | Bolt-Blade            |
| 4           | 108-8110-03        | 1           | Guide-Belt                | 11          | 49-2040            | 1           | Screw-HWHTF           |
| 5           | 95-1727            | 4           | Screw-Taptite             | 12          | 125-8403           | 1           | Decal-Primer          |
| 6           | 125-8432           | 1           | Spacer-Driver, Blade      | 13          | 117-2718           | 1           | Decal-Arrester, Spark |
| 7           | 106-3987           | 1           | Driver-Blade              |             |                    |             |                       |

● Obtain parts from [www.kawpowerepc.com](http://www.kawpowerepc.com)

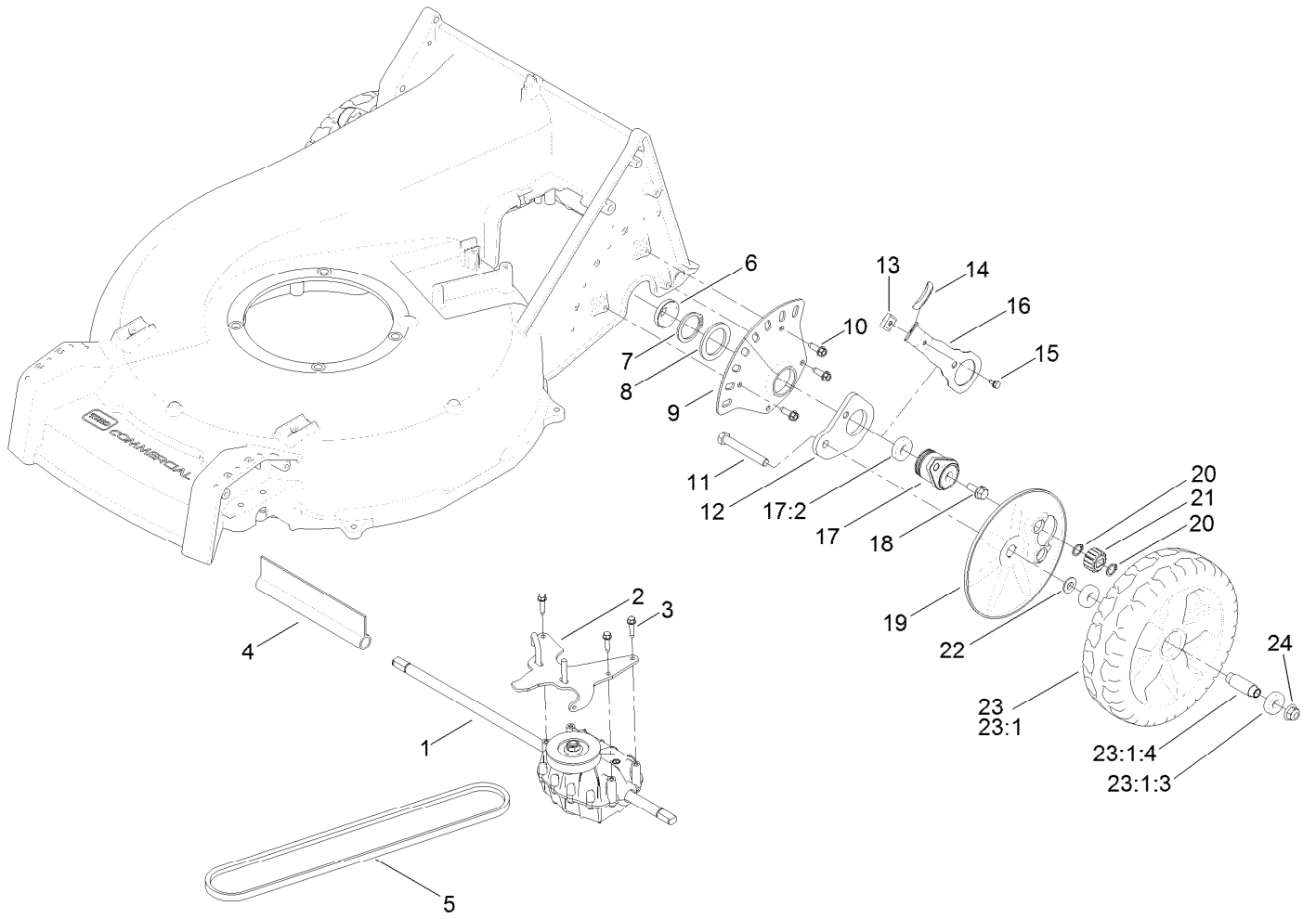
# Height-of-Cut and Wheel Assembly



## Height-of-Cut and Wheel Assembly (continued)

| <i>Ref.</i> | <i>Part Number</i> | <i>Qty.</i> | <i>Description</i>           | <i>Ref.</i> | <i>Part Number</i> | <i>Qty.</i> | <i>Description</i>  |
|-------------|--------------------|-------------|------------------------------|-------------|--------------------|-------------|---------------------|
| 1           | 121-1439           | 2           | Plate-HOC, Front             | 10          | 130-9690           | 2           | Key-Arm, Spring     |
| 2           | 49-2040            | 4           | Screw-HWHTF                  | 11          | 121-1431-03        | 2           | Arm-Spring          |
| 3           | 121-1427           | 2           | Bushing-Axle, Front HOC      | 12          | 104-2065           | 2           | Screw-HWH           |
| 4           | 121-1442           | 2           | Retainer-Bushing, Front Axle | 13          | 130-6420           | 2           | Arm-Pivot, Front    |
| 5           | 321-9              | 4           | Screw-HH                     | 14          | 99-5107            | 2           | Nut-Lock            |
| 6           | 104-7201           | 4           | Nut-HF                       | 15          | 323-13             | 2           | Screw-HH            |
| 7           | 121-1428           | 2           | Axle-Wheel                   | 16          | 74-1671            | 2           | Spacer-Cover, Wheel |
| 8           | 104-8301           | 4           | Nut-Flange, NI               | 17          | 125-1080           | 2           | Wheel               |
| 9           | 125-1093           | 2           | Knob-Lever, HOC              | 17:3        | 52-2450            | 2           | Bearing-Wheel       |
|             |                    |             |                              | 17:4        | 125-1077           | 1           | Spacer              |

# Transmission Assembly

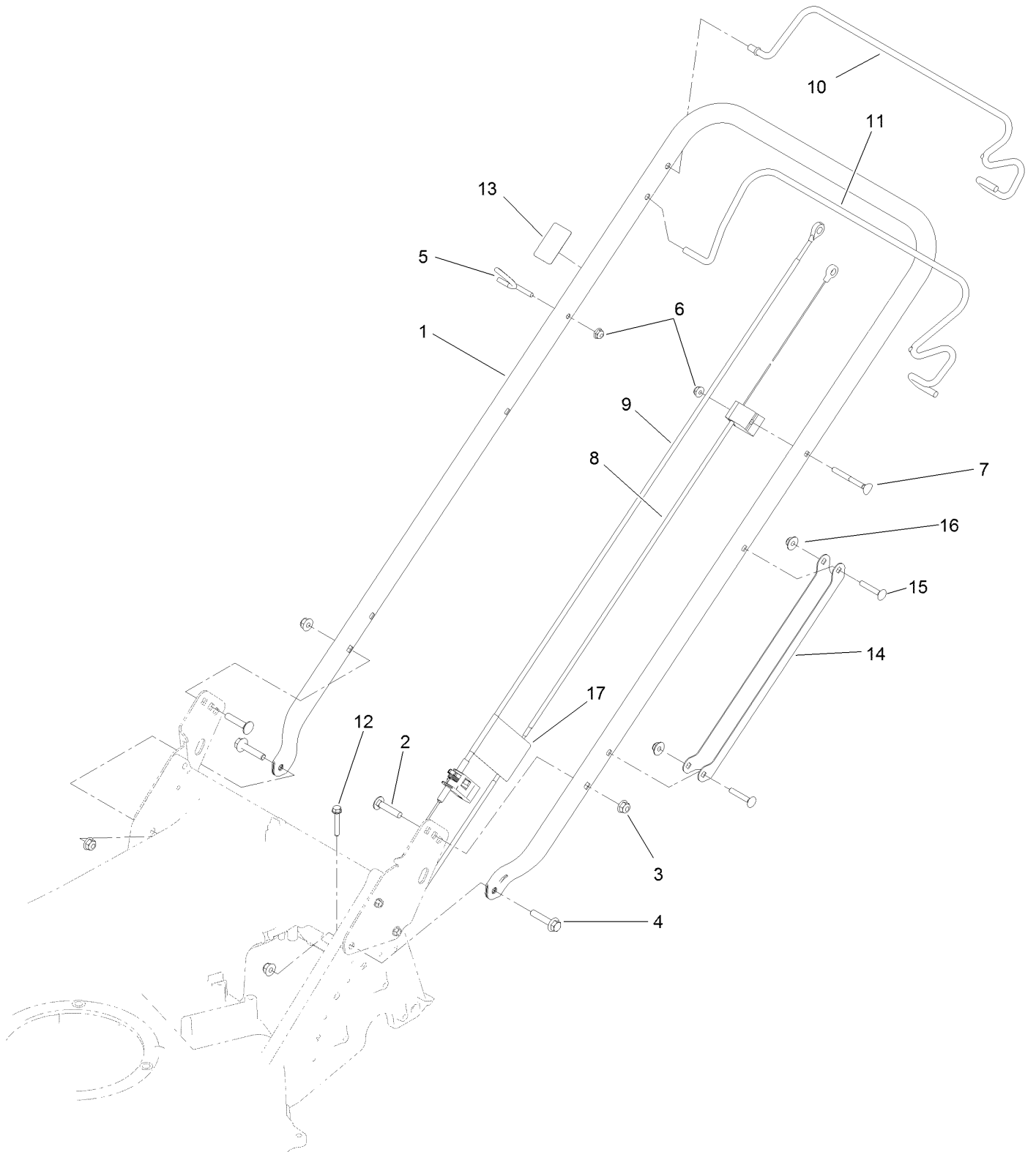


## Transmission Assembly (continued)

| <i>Ref.</i> | <i>Part Number</i> | <i>Qty.</i> | <i>Description</i>        | <i>Ref.</i> | <i>Part Number</i> | <i>Qty.</i> | <i>Description</i>  |
|-------------|--------------------|-------------|---------------------------|-------------|--------------------|-------------|---------------------|
| 1           | 125-1020           | 1           | Transmission              | 15          | 104-2065           | 2           | Screw-HWH           |
| 2           | 125-8430-03        | 1           | Guide-Belt                | 16          | 121-1448-03        | 2           | Arm-Spring, Rear    |
| 3           | 27-0220            | 3           | Screw-Special             | 17          | 121-1424           | 2           | Retainer ASM        |
| 4           | 130-9681           | 1           | Cover-Shaft, Transmission | 17:2        | 52-2450            | 4           | Bearing-Wheel       |
| 5           | 125-8395           | 1           | Belt-V                    | 18          | 130-9692           | 2           | Screw-HWH           |
| 6           | 127-6848           | 2           | Cover-Bearing             | 19          | 125-1082           | 2           | Cover-Wheel         |
| 7           | 32151-10           | 2           | Ring-Retaining            | 20          | 32151-61           | 4           | Ring-Retaining      |
| 8           | 98-1452            | 2           | Washer-Thrust             | 21          | 110-9417           | 2           | Gear-Pinion, 15T    |
| 9           | 130-6422           | 2           | Plate-HOC, Rear           | 22          | 74-1671            | 2           | Spacer-Cover, Wheel |
| 10          | 49-2040            | 6           | Screw-HWHTF               | 23          | 125-1081           | 2           | Wheel ASM           |
| 11          | 323-13             | 2           | Screw-HH                  | 23:1        |                    | 1           | Wheel ●             |
| 12          | 130-6421           | 2           | Arm-Pivot, Rear           | 23:1:3      | 52-2450            | 2           | Bearing-Wheel       |
| 13          | 130-9690           | 2           | Key-Arm, Spring           | 23:1:4      | 125-1077           | 1           | Spacer              |
| 14          | 125-1093           | 2           | Knob-Lever, HOC           | 24          | 104-8301           | 2           | Nut-Flange, NI      |

● Not serviced separately

# Handle and Control Assembly



## Handle and Control Assembly (continued)

| <i>Ref.</i> | <i>Part Number</i> | <i>Qty.</i> | <i>Description</i> | <i>Ref.</i> | <i>Part Number</i> | <i>Qty.</i> | <i>Description</i>                |
|-------------|--------------------|-------------|--------------------|-------------|--------------------|-------------|-----------------------------------|
| 1           | 125-1015-03        | 1           | Handle             | 10          | 125-8437-03        | 1           | Bail-Traction                     |
| 2           | 3230-4             | 2           | Screw-CARR         | 11          | 125-8436-03        | 1           | Bail-Brake                        |
| 3           | 104-8300           | 4           | Nut-Flange, NI     | 12          | 94-2691            | 1           | Screw-HWH                         |
| 4           | 115-1794           | 2           | Screw-HHF          | 13          | 125-8404           | 1           | Decal-Primer                      |
| 5           | 114-2775           | 1           | Guide-Rope         | 14          | 127-6897-03        | 1           | Guard-Cable, Handle               |
| 6           | 104-7201           | 2           | Nut-HF             | 15          | 108-0988           | 2           | Screw-CARR                        |
| 7           | 92-2270            | 1           | Screw-Handle       | 16          | 114-3778           | 2           | Nut-Lock, NI                      |
| 8           | 125-8371           | 1           | Cable-Brake        | 17          | 130-6722           | 1           | Decal-Adjust Self Propel<br>Drive |
| 9           | 125-8372           | 1           | Cable-Traction     |             |                    |             |                                   |

# Attachments and Accessories

## For 22290 21in Heavy-Duty Recycler/Rear Bagger Lawn Mower

| <b>Product Name</b>   | <b>Model/Part</b> |
|---|-------------------|
| Blade-21in .....  | 108-0954-03       |
| Blade-Bagging, 21in .....   | 125-1072-03       |
| Cup-Anti Scalp.....   | 125-8440          |
| Engine Guard Kit, 21in or 53cm Heavy-Duty Recycler/Rear Bagger Lawn Mower.....    | 130-9700          |
| Deck Side Guard Kit, 21in or 53cm Heavy-Duty Recycler/Rear Bagger Lawn Mower..... | 130-9701          |
| Rear Discharge Kit, Heavy-Duty Recycler/Rear Bagger Lawn Mowers.....              | 130-9734          |



**Notes:**

**Notes:**

**Notes:**



**Count on it.**